



Substance Use Disorder 101

Los Angeles County
Department of Public Health
Substance Abuse Prevention and Control



What Will We Learn Today?



Discuss

General signs and symptoms of a loved one's substance use and/or addiction.

Describe

Two (2) ways that you can provide help for someone with addiction.

Identify

Resources for substance use treatment services and other supportive services.

What Is Addiction?



Addiction (aka: Substance Use Disorder) is defined as a chronic, relapsing condition, diagnosable by a qualified health professional.

Common characteristics that can include:

- **Compulsive behavior** (e.g., drug seeking, fixating on drugs/alcohol)
- **Continued use/abuse of drugs** despite negative and harmful consequences
- Involves **changes in the brain's structure and function**
- Ranges in **severity of use** (mild, moderate, and severe)



Photo- Getty Image1130260818

What Does Addiction Look Like?



- **Feeling triggered to use** (for example by an emotion, thoughts, person(s), environment)
- **Cravings to use**
- **Increased tolerance** (need more to get the same feeling)
- **Withdrawal when use stops** (body and mind do not feel good without the substance, feeling sick)

What signs have you seen in people you think might be using/addicted to drugs and/or alcohol?



Prolonged substance use changes the brain in fundamental and lasting ways.

- ❖ Because our brain chemistry changes due to substance use, we may feel that you need alcohol or drugs just to feel “normal.”
- ❖ A substance use disorder occurs when someone continues using substances frequently, even though there are negative consequences.



Factors That May Lead People To Use And Misuse Substances:

- Loneliness
- Family issues
- Unemployment or financial issues
- Issues at school
- Loss of loved one
- Trauma (past or current)
- History of or current abuse
- Lack of meaningful connections
- Poor self-esteem
- Perceived or actual failure
- Easy access to drugs/social network is using
- Peer pressure
- Anxiety and/or depression

Why Do Some People Develop Substance Use Disorders While Others Do Not?

Biological

- Genetics
- Gender
- Mental disorders
- Brain mechanisms

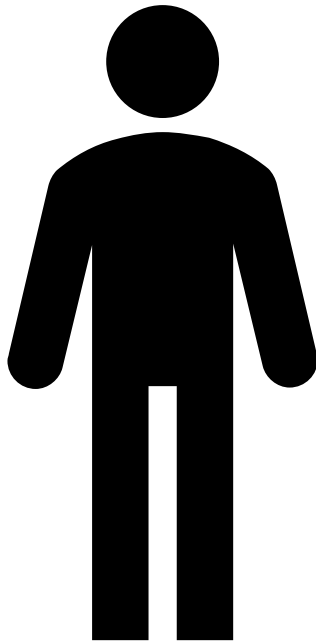
Environmental

- Trauma
- Social influences
- Community attitudes
- Chronic stress

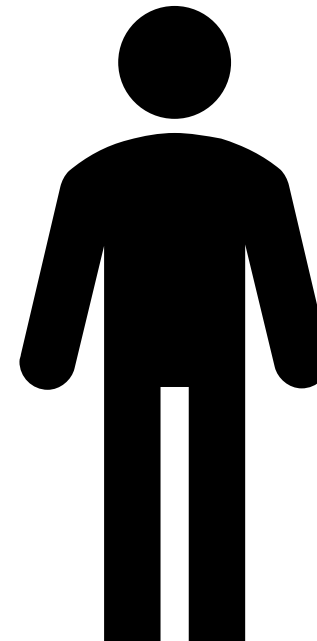
Substance-Related

- Route of administration
- Effects
- Early use
- Availability/cost

“Substance Abuser”
“Addict”



“Person Who Has a
Substance Use Disorder”





- ❖ With treatment (e.g., counseling and/or medication), people can and do recover.
- ❖ People with Substance Use Disorders can live full and happy lives, just like people with other chronic diseases (e.g., asthma, heart disease).



How To Help Someone with a Substance Use Disorder



How Do I Know When I Need to have a Conversation with My Loved One?

- ❖ There may not be any clear way to know **when to have a conversation.**
- ❖ **Opening a conversation** is the place to start.
- ❖ Sometimes all you can do is **“check in” with your loved one and have an open and honest conversation.**



- ❖ Neglecting responsibilities
- ❖ Using drugs under dangerous conditions or taking risks while intoxicated
- ❖ Experiencing legal trouble
- ❖ Problems in relationships

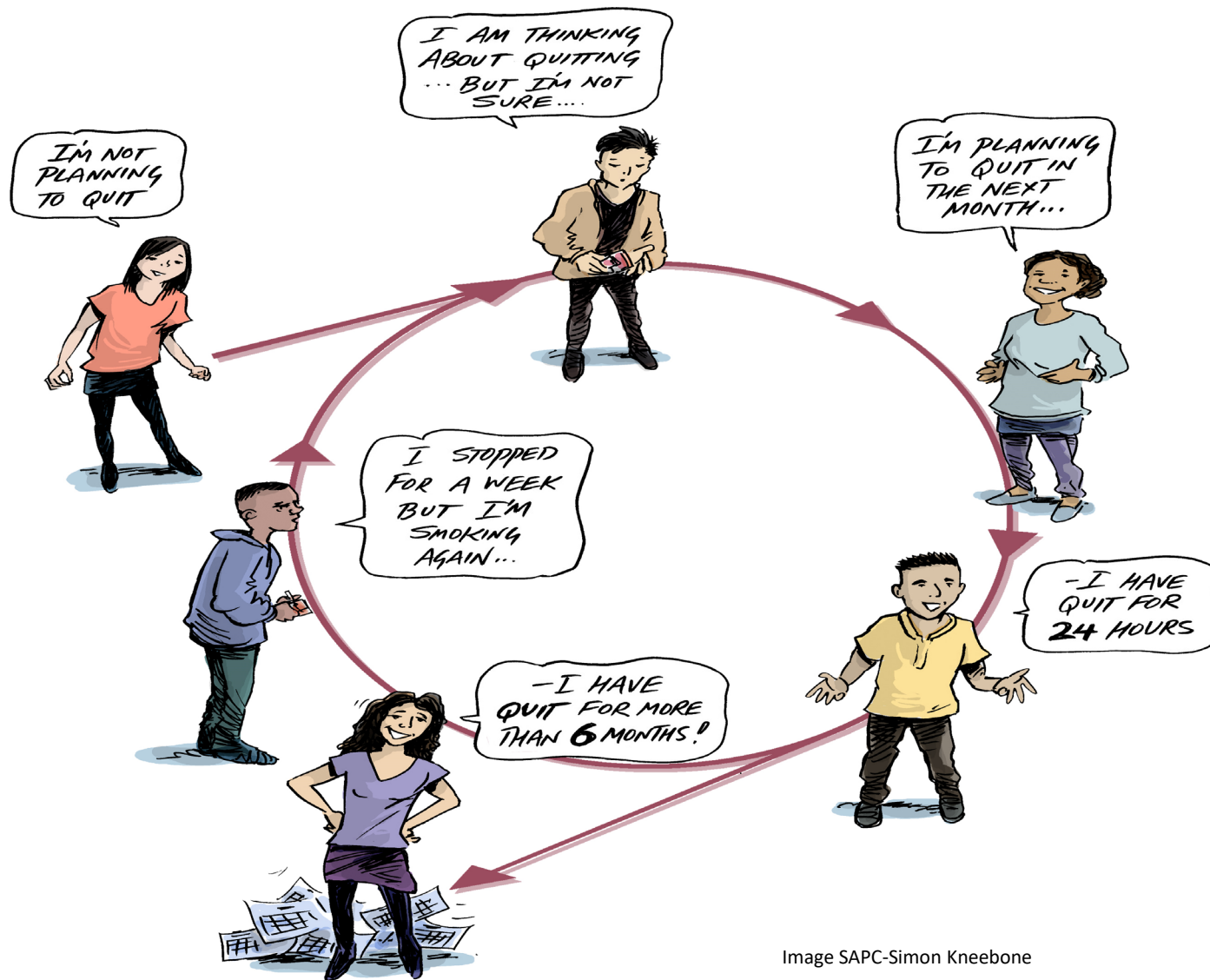
How You May Feel

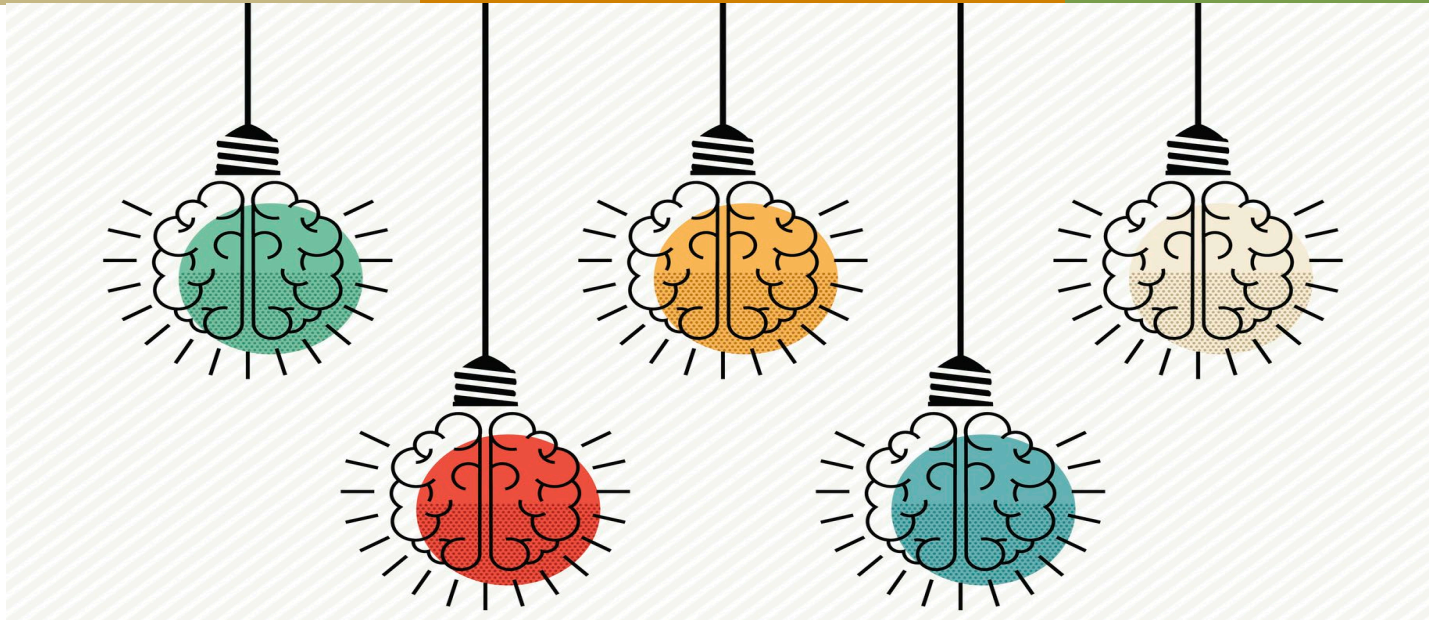


When you discover that someone you care about is using or may be addicted to drugs and/or alcohol, you may experience:

Denial Won't accept that there is a problem	Loss "They won't be the same."
Suppression "It's not a big deal. It's not really a problem."	Confusion "How did this happen?"
Shame Painful feeling of humiliation	Helplessness "There is nothing I can do."
Self-blame "It's my fault... I caused it."	Hesitation "Do I say something?"
Anger "why are they doing this?"	Guilt "I could/should do more."

What Stage of Change is the person in?





- **“There’s something I need to talk to you about...”**
- **“I noticed you’ve been acting differently...”**
- **“I found _____ in your room...”**
- **“I’m here when you're ready to talk.”**
- **“I love you no matter what.”**

Communication Tips



Avoid one-way lectures (ask and listen instead)

Keep the conversations brief

Encourage honest reactions and opinions

Use scenarios to consider: "What would they do if..."

Avoid using put-downs that could prevent someone from opening up

Express clear expectations and values

Voice is clear and consistent

Be prepared for questions

This can be an ongoing conversation

What's Helpful

- Manage expectations (the conversation may not go as planned)
- Stay calm (take a break if needed)
- Keep focused (on the conversation you're having)
- Listen as much as you talk
- Recognize when you don't have the energy to be a good listener
- Try to put yourself in their shoes
- Be consistent with your words and actions of support
- Keep an open mind and an open door (it can be an on-going conversation)
- Set clear boundaries and seek out support for yourself

What doesn't help

- Warning or threatening
- Arguing or lecturing
- Disagreeing, judging, criticizing, or blaming
- Shaming, ridiculing, or labeling
- Disregarding the other person's feelings
- Body language counts - avoid finger pointing, looking at your cell phone, crossing your arms, etc.

R
E
C
A
P

- Discussing your concerns regarding someone's drug use or abuse can be very difficult.
- It is important to make sure to take care of yourself as much as possible.
- Plan the conversation you want to have with your loved one and be prepared to have an ongoing conversation.
- Whatever you may feel regarding someone's drug use or abuse is OK, and you are not alone.
- Resources for you and your loved ones will be provided at the end of this presentation.



Overdose Prevention and Naloxone





Harm Reduction Resources

LA County Department of Public Health Substance Abuse Prevention and Control (SAPC)

Harm Reduction

Harm Reduction | Top 5 Myths | Overdose Epidemic | Accessing Naloxone | Finding Services | Resources | FAQ | Contact Us

Harm Reduction and Overdose Prevention Resources

Community-based organizations and individuals may utilize the following resources and information designed by SAPCs Harm Reduction Unit to support efforts to expand access to harm reduction and overdose prevention services.

- [Fentanyl Resources](#) +
- [Xylazine Resources](#) +
- [Naloxone Resources](#) +
- [Training and Presentations](#) +
- [Local, State and National Resources](#) +

Scan the QR Code to visit the Harm Reduction Webpage



For more information, resources, and training, please contact the Harm Reduction Unit at HarmReduction@ph.lacounty.gov

ph.lacounty.gov/sapc/public/harm-reduction/

15AUG2023



Scan QR Code to Access Fentanyl 101 Presentation
Or [Click This Link on PDF Handout to Access Presentation](#)



Naloxone



Fentanyl Test Strips



Xylaxine Test Strips

These overdose prevention resources can be obtained for **free** at [CORE Centers](#) and [EOP Hub Programs](#).

Engagement and Overdose Preventions (EOP) Hubs in LA County



[Click here or scan QR code to view EOP Hub Program Schedule](#) →



Asian American Drug Abuse Program (Compton, Lawndale, Lynwood)	(424) 331-5799
Bienestar Human Services * (East Los Angeles)	(886) 590-6411
Homeless Health Care, Los Angeles (Los Angeles)	(213) 617-8408
Homeless Outreach Program Integrated Care System (Los Angeles)	(323) 432-4399
L.A. Community Health Project (Los Angeles, Boyle Heights, Skid Row, Hollywood, Watts)	(323) 380-5469
Tarzana Treatment Center (Sylmar)	(818) 342-5897
Venice Family Clinic * (Venice)- Safe Place for Youth: http://www.safeplaceforyouth.org	(310) 314-5480

*May accept youth (age 12-17)



What Kind of Support is Available?

Drug counseling

Your house of worship or
spiritual leader

Individual therapy

Peer support groups

- What support is in your community?



Resources



Youth, young adults and adults can access no-cost (no fees) substance use treatment services at any provider in the network if they meet the following criteria AND meet medical necessity:

**Los
Angeles
County
Resident**



Medi-Cal Eligible or Enrolled

(active benefits are not required at time of screening, referral, or intake)

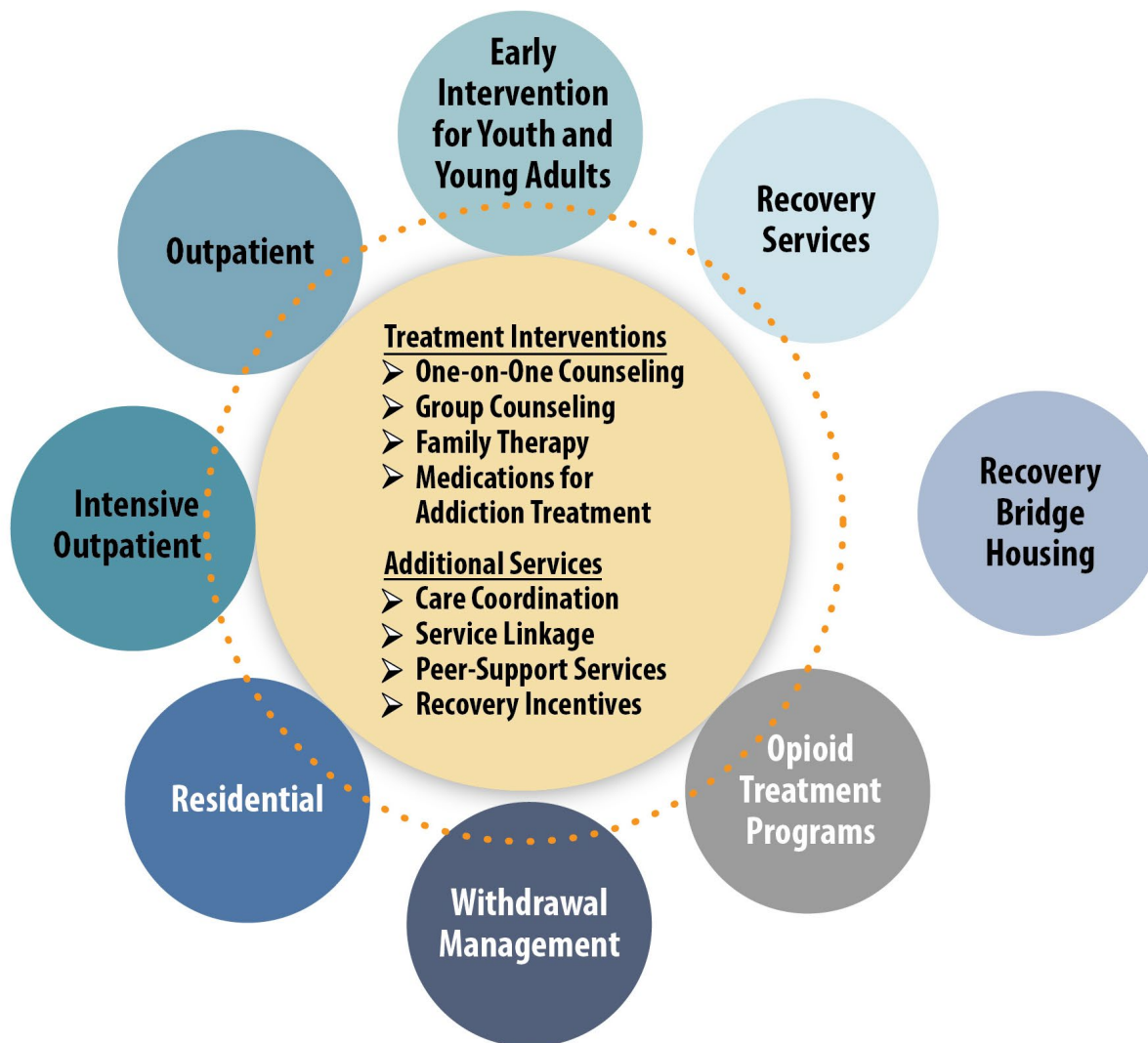
OR

Other County-Funded Program Participant

(such as AB 109, Drug Court)

There are also fee-for-service options for patients that do not meet these eligibility criteria.

Los Angeles County's Available SUD Benefits



A 24/7 toll-free helpline to provide screening, resources, and referral directly to a treatment provider.

SUBSTANCE ABUSE SERVICE HELPLINE
24/7
1.844.804.7500



CORE Centers offer sites throughout L.A. County where staff provide education, resources, and in-person screening and linkage to treatment.

COREcenter
Connecting to Opportunities for Recovery and Engagement



CENS Staff serve as liaisons between state, county, and city agencies and providers conducting in-person navigation, screening, and linkage to treatment.

CENS
Client Engagement
and Navigation Services



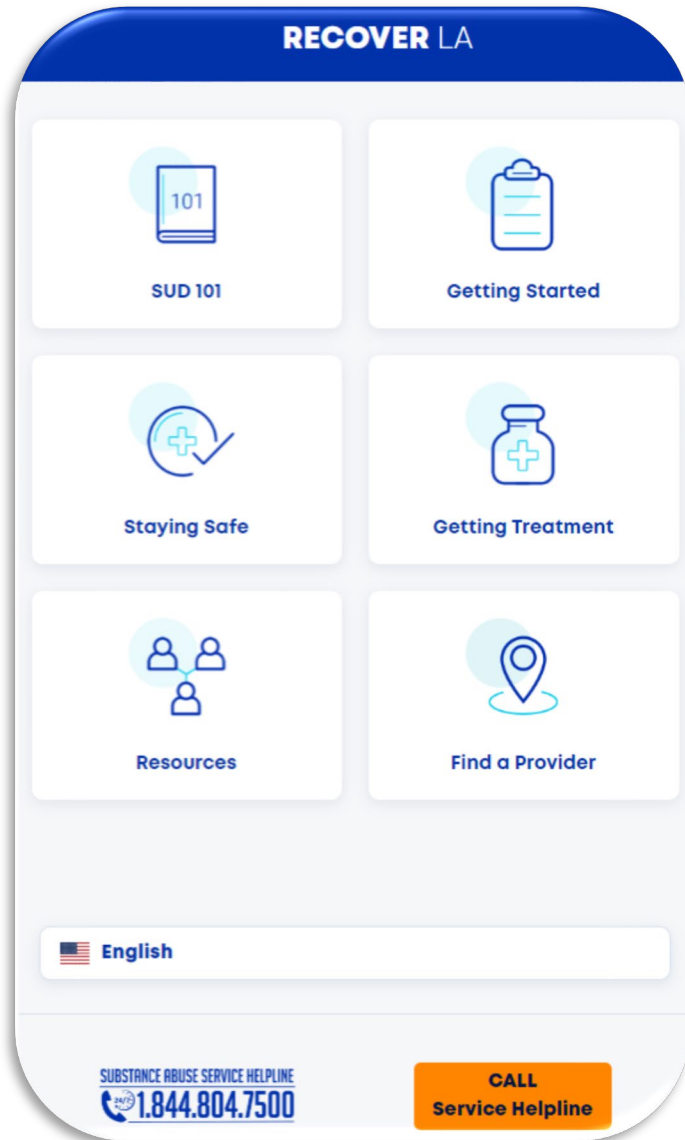
Any person (or their representative) can contact treatment providers directly or by using the Online Provider Directory.

**Service Bed and
Availability Tool
(SBAT)**



[No Wrong Door Pathways to Access Alcohol/Drug Treatment](#)






- Free mobile app
- Provides education and resources for those seeking substance use services for themselves or others
- Available in 13 languages

Visit RecoverLA.org or use the QR code below to access the app



Install this webapp on your phone:
Tap  and then Add to Homescreen



Additional Resources



Name	Description	Call Toll free	Web Address
Los Angeles County Substance Abuse Service Helpline (SASH)	24/7 helpline screening and referral of free substance use disorder treatment services in Los Angeles County.	(844) 804-7500 24 hours per day/ 7 days a week	Web based tool of available Substance Use Disorder Treatment Services in Los Angeles County: http://sapccis.ph.lacounty.gov/sbat/
988 Suicide & Crisis Lifeline (formerly known as the National Suicide Prevention Lifeline)	988 Suicide & Crisis Lifeline provides free and confidential emotional support to people in suicidal crisis or emotional distress.	988 Call & Text 24 hours per day/ 7 days a week Línea de Prevención del Suicidio y Crisis 988 For TTY Users: Use your preferred relay service or dial 711 then 988.	Lifeline (988lifeline.org)
Department of Mental Health (DMH) Access Hotline	24/7 Mental Health Services include screening, assessment, referral & crisis counseling.	(800) 854-7771 24 hours per day/ 7 days a week	List of Mental Health Services: https://dmh.lacounty.gov/our-services/
Department of Social Services (DPSS)	To apply for Medi-Cal, food stamps and income support for low-income families and individuals.	(866) 613-3777 Monday-Friday 7:30am - 5:30pm	http://dpss.lacounty.gov/wps/portal/dpss
Office of Immigration Affairs (OIA)	Connection to free or low-cost attorney if you have questions regarding the “public charge” test and your immigration status.	(800) 593-8222 Monday-Friday 8:00am-4:30pm	oia.lacounty.gov

Additional Resources - Continued



Name	Description	Call Toll free	Web Address
Alcoholics Anonymous (AA)	Peer supported program for people in recovery from alcohol use disorder who meet regularly.	(800) 923-8722	www.AA.org
Narcotics Anonymous (NA)	Peer supported program for people in recovery from other illicit substances who meet regularly.	(800) 974-0062	www.NA.org
National Alliance on Mental Illness (NAMI)	Provides education support & advocacy to improve the lives of those living with mental illness.	(800) 950-6264	www.nami.org
Nicotine Anonymous	Peer supported program for people in recovery or who need support to stop use of tobacco and nicotine products who meet regularly.	(877) 879-6422	https://www.nicotine-anonymous.org/
Al-Anon Los Angeles	Members who are worried about someone important to them with a substance use issue.	(888) 425-2666 (818) 760-7440 - Los Angeles	www.al-anon.org
Medication-Assisted Recovery Anonymous (MARA)	Peer supported program for people in recovery that utilize medication-assisted treatment.	N/A	California MARA International (mara-international.org)
Los Angeles Helpline	Central source for providing information/referrals for all health and human services in LA County.	211 24 hours per day/ 7 days per week	www.211la.org

Resources for Youth



Name and Description	Website	
L.A. County Youth Suicide Prevention Project	https://preventsuicide.lacoe.edu	
National Crisis Text Line	https://www.crisistextline.org Text HOME to 741741	
Trevor Project Lifeline Provide support to LGBTQ+ youth and allies in crisis or in need of a safe and judgment-free place to talk	https://www.thetrevorproject.org/get-help 1-866-488-7386	
LA-HOP L.A. County Homeless Outreach Portal	https://www.lahsa.org/portal/apps/la-hop	
Addressing Teen Mental Health Challenges A mental health toolkit for teens	http://publichealth.lacounty.gov/pie/Education/MentalHealthToolKit/toolkit-teen.htm	

How to Locate These Resources:



Step 1

- Visit the link provided below:
- [LA County Department of Public Health - Substance Abuse Prevention and Control - Reaching the 95% \(R95\) Initiative](#)



Step 2

- Scroll to the bottom of the page where it says Learn More (see screenshot below) and click on the links below the title “SUD 101 and Accessing Substance Use Treatment in L.A. County Resources.”

Learn More

SAPC is a state leader in launching innovative SUD tools and programs to enhance access to services by individuals who may need treatment, community stakeholders and the SUD workforce.

Click the [RecoverLA](#) link to learn more about our award-winning mobile-friendly platform that provides SUD service and overdose prevention resources, as well as a filterable service locator.

Click the link to the [Service and Bed Availability Tool \(SBAT\)](#) to locate a treatment provider near you with filters that make searching for specialty SUD services easy: <https://sapccis.ph.lacounty.gov/sbat/>.

Prevention First, Treatment Works, and Recovery is Possible!



Accessing Substance Use Treatment Services in L.A. County and Additional Support Resources

There are four main ways to enter Los Angeles County's specialty substance use disorder (SUD) system. Visit [No Wrong Door Pathways To Access Alcohol/Drug Treatment](#) to learn more or click on the links below.

The infographic consists of four vertical panels, each representing a different pathway to substance use treatment services. Each panel is topped with a door icon and a colored arrow pointing down to the panel's header. The panels are: 1. SASH (red), 2. CORE Centers (orange), 3. CENS (olive green), and 4. Self-Referral (light green).

Pathway	Description
SASH Substance Abuse Service Helpline 1-844-804-7500	A 24/7 toll-free helpline where a team of professionals is available to provide screening, resources, and referral directly to an alcohol/drug treatment provider.
CORE Centers Connecting to Opportunities for Recovery and Engagement Click here for more info	Community spaces throughout L.A. County where staff provide alcohol/drug education, resources, and in-person screening and linkage to treatment.
CENS Client Engagement and Navigation Services Click here for more info	Sites throughout L.A. County where staff serve as liaisons between state, county, and city agencies and alcohol/drug treatment providers conducting in-person navigation, screening, and linkage to treatment.
Self-Referral Substance Use Treatment Providers Directory Click here for directory	Any person (or their representative) can contact alcohol/drug treatment providers directly or by using the Online Provider Directory to link into or find out more about treatment options.

Accessing Substance Use Treatment Services in L.A. County and Additional Support Resources



Substance Abuse Service Helpline (SASH)

SUBSTANCE ABUSE SERVICE HELPLINE
 **1.844.804.7500**

Toll-free, **available 24/7, year-round** • Interpretation available, including TTY



1. Anyone can call the SASH (adults, youth 12+)



2. Clinicians/Counselors conduct a screening and connect the caller to a treatment provider

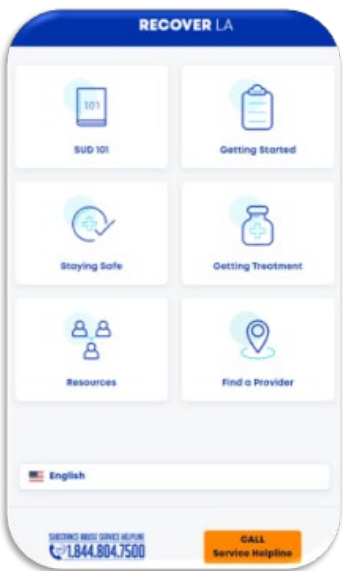


3. The SASH operator will connect you with a treatment provider or provides you with a referral options

02JAN2022 39



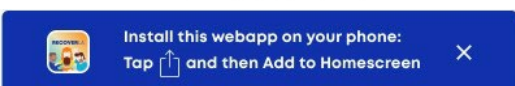
Recover LA Mobile App



- Free mobile app
- Provides education and resources for those seeking substance use services for themselves or others
- Available in 13 languages

Visit [RecoverLA.org](https://www.recoverla.org) or use the QR code below to access the app





37

*Image above is hyperlinked to <https://www.recoverla.org/>

Accessing Substance Use Treatment Services in L.A. County and Additional Support Resources

Harm Reduction Resources

LA County Department of Public Health
Substance Abuse Prevention and Control (SAPC)

Harm Reduction

Harm Reduction | Top 5 Myths | Overdose Epidemic | Accessing Naloxone | Finding Services | Resources | FAQ | Contact Us

Harm Reduction and Overdose Prevention Resources

Community-based organizations and individuals may utilize the following resources and information designed by SAPCs Harm Reduction Unit to support efforts to expand access to harm reduction and overdose prevention services.

- Fentanyl Resources +
- Xylazine Resources +
- Naloxone Resources +
- Training and Presentations +
- Local, State and National Resources +


Scan the QR Code to visit the Harm Reduction Webpage

For more information, resources, and training, please contact the Harm Reduction Unit at HarmReduction@ph.lacounty.gov

ph.lacounty.gov/sapc/public/harm-reduction/ 15AR0223

Scan QR Code to Access Fentanyl 101 Presentation

*Image above is hyperlinked to <http://publichealth.lacounty.gov/sapc/public/harm-reduction/>

SYRINGE EXCHANGE PROGRAMS IN LOS ANGELES COUNTY	
Click here or scan QR code to view EOP Hub Program Schedule → 	
Asian American Drug Abuse Program (Compton, Lawndale, Lynwood)	(424) 331-5799
Bienestar Human Services* (Los Angeles)	(866) 590-6411
Homeless Health Care, Los Angeles (Los Angeles)	(213) 617-8408
Homeless Health Care, Los Angeles (Los Angeles)	(323) 432-4399
L.A. Community Health Project (Los Angeles, Watts)	(323) 380-5469
Tarzana Treatment Center (Sylmar)	(818) 342-5897
Venice Family Clinic* (Venice)	(310) 314-5480
Safe Place for Youth (SPY)	
*May accept youth (ages 12-17)	

Accessing Substance Use Treatment Services in L.A. County and Additional Support Resources

Additional Resources			
Name of Resource	Description	Call Toll Free	Web Address
Los Angeles Department of Health Services	An integrated health system providing health care to the community and those incarcerated as well as a variety of community programs.	For a list of contact numbers visit https://dhs.lacounty.gov/contact-us/?facprogram=Health%20Services	https://dhs.lacounty.gov/
Los Angeles County Department of Mental Health (DMH) Access Hotline	24/7 Mental Health Services include screening, assessment, referral & crisis counseling	(800) 854-7771 24 hours per day/ 7 days a week	List of Mental Health Services: https://dmh.lacounty.gov/our-services/
Los Angeles County Department of Social Services (DPSS)	To apply for Medi-Cal, food stamps and income support for low-income families and individuals	(866) 613-3777 Monday-Friday 7:30am - 5:30pm	https://dpss.lacounty.gov/en.html
Los Angeles County Homeless Outreach Portal (LA-HOP)	Countywide web-based portal for constituents to easily submit requests for homeless outreach and provides educate about outreach teams	For families with minor children dial 211 and ask to be connected to the Coordinated Entry System for Families	https://www.lahsa.org/portal/apps/la-hop/
Los Angeles Homeless Services Authority (LAHSA)	Resources for individuals and households experiencing homelessness or at-risk of becoming homeless	Information Line (213) 225-6581 Mon – Fri 7:30 am – 4:30 pm	https://www.lahsa.org/get-help

Accessing Substance Use Treatment Services in L.A. County and Additional Support Resources

Los Angeles County Shelter Resources	LA Public Library and LAHSA have web-based portals for locating shelters within Los Angeles County	211 Adults & Youth (800) 548-6047	https://www.lapl.org/homeless-resources https://www.lahsa.org/winter-shelter https://www.lahsa.org/portal/apps/find-a-shelter/
988 Suicide and Crisis Lifeline	The 988 Suicide and Crisis Lifeline provides free and confidential emotional support to people in suicidal crisis or emotional distress 24 hours a day, 7 days a week.	988 24 hours per day/7 days a week Línea de Prevención del Suicidio y Crisis 988 For TTY Users: Use your preferred relay service or dial 711 then 988.	Lifeline (988lifeline.org) Note: Tele-Interpreter services for 150+ languages available to the crisis centers
L.A. County Crisis Text Line	Crisis Text Line is available 24/7 from anywhere in the U.S. A live, trained Crisis Counselor receives the text and responds, all from our secure online platform.	Text HOME to 741741	https://www.crisistextline.org/
Trevor Project Lifeline	Provide support to LGBTQ youths and allies in crisis or in need of a safe and judgment-free place to talk.	1-800-788-7386	https://www.thetrevorproject.org/get-help
Office of Immigration Affairs (OIA)	Connection to free or low-cost attorney if you have questions regarding the “public charge” test and your immigration status	(800) 593-8222 Monday-Friday 8:00am-4:30pm	oia.lacounty.gov

Accessing Substance Use Treatment Services in L.A. County and Additional Support Resources

Alcoholics Anonymous (AA)	Peer supported program for people in recovery from alcohol use disorder who meet regularly	(800) 923-8722	www.AA.org
Narcotics Anonymous (NA)	Peer supported program for people in recovery from other illicit substances who meet regularly	(800) 974-0062	www.NA.org
National Alliance on Mental Illness (NAMI)	Provides education support & advocacy to improve the lives of those living with mental illness	(800) 950 6264	www.nami.org
Nicotine Anonymous	Peer supported program for people in recovery or who need support to stop use of tobacco and nicotine products who meet regularly	(877) 879-6422	https://www.nicotine-anonymous.org/
Al-Anon Al-Anon Los Angeles	Members who are worried about someone important to them with a substance use issue	(888) 425-2666 (818) 760-7440- Los Angeles	www.al-anon.org
Medication-Assisted Recovery Anonymous (MARA)	Peer supported program for people in recovery that utilize medication-assisted treatment		California MARA International (mara-international.org)