

Past Week Status

	Th 5/19	W 5/18	Tu 5/17	M 5/16	Su 5/15	Sa 5/14	F 5/13
Daily new cases	4,725	4,384	2,233	1,941*	2,707*	3,489	4,025
Daily deaths	9	10	8	5*	4*	6	6
Daily hospitalizations of confirmed cases	379	363	327	312	318	319	298
Daily positivity rate^ (7-day avg)	3.5%	3.2%	2.9%	2.8%	2.7%	2.6%	2.6%
Daily case rate (7-day avg)	33	31	29	29	28	28	27



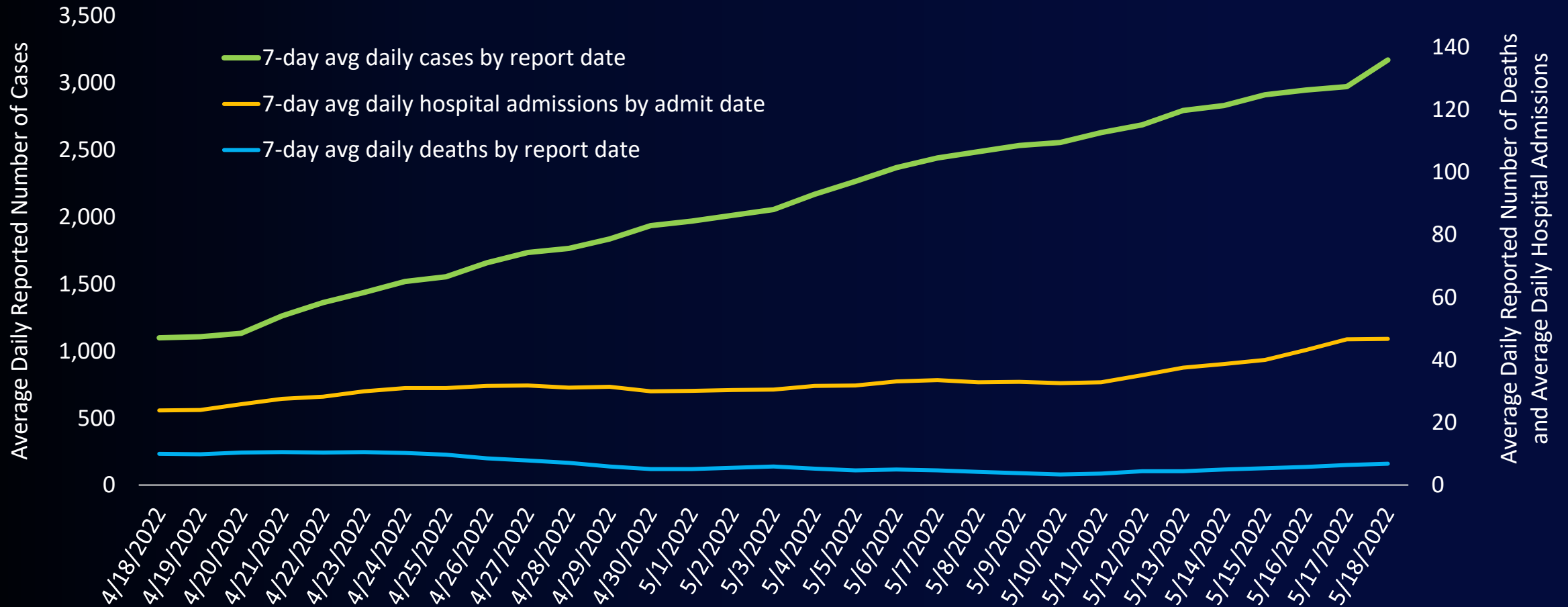
covid19.lacounty.gov

5/19/2022

*Number reflects an undercount due to a lag from weekend reporting.

^ Daily positivity rates do not include data from Long Beach and Pasadena

7-Day Average Daily COVID-19 Cases and Deaths by Report Date* and Daily Hospital Admissions by Admit Date April 18, 2022 – May 18, 2022



covid19.lacounty.gov

5/19/2022

*Case and death values include data from Long Beach and Pasadena.

CDC COVID-19 Community Levels

New Cases (per 100,000 people in last 7 days)	Indicators	Low	Medium	High	LA County Current Values <u>New Cases:</u> 202/100,000 (as of 5/18/22)
Fewer than 200	New COVID-19 admissions per 100,000 population (7-day total)	<10.0	10.0-19.9	≥20.0	NA
	Proportion of staffed inpatient beds occupied by COVID-19 patients (7-day average)	<10.0%	10.0-14.9%	≥15.0%	NA
200 or more	New COVID-19 admissions per 100,000 population (7-day total)	NA	<10.0	≥10.0	3.4
	Proportion of staffed inpatient beds occupied by COVID-19 patients (7-day average)	NA	<10.0%	≥10.0%	1.7%

The COVID-19 community level is determined by the higher of the inpatient beds and new admissions indicators, based on the current level of new cases per 100,000 population in the past 7 days.



covid19.lacounty.gov

5/19/2022

Medium Community Level

Safety Measures that Align with CDC's Recommended Actions for the Medium Community Level

- ✓ Ensure access to testing, including through point-of-care and at-home tests
- ✓ Consider implementing screening testing or other testing strategies for people who are exposed to COVID-19 in workplaces, schools, or other community settings as appropriate
- ✓ Distribute and administer vaccines to achieve high community vaccination coverage and ensure health equity
- ✓ Implement enhanced prevention measures in high-risk congregate settings (e.g., correctional facilities and homeless shelters)
- ✓ Ensure access and equity in vaccination, testing, treatment, community outreach, and support services for disproportionately affected populations
- ✓ Protect people at high risk for severe illness or death by ensuring equitable access to vaccination, testing, treatment, support services, and information
- ✓ Improve ventilation in public indoor spaces



LA County Early Alert Signals

Indicator	Thresholds			LA County Current Values
	Low Concern	Medium Concern	High Concern	
Percent of specimens sequenced that are identified as a new variant of concern (including subvariants) <i>(based on WHO designation)</i> ¹	< 10%	10%-20%	> 20%	99%
7-day average percent of Emergency Department encounters classified as coronavirus-related ²	< 5%	5%-10%	> 10%	5%
7-day cumulative crude case rate for the lowest income areas (30-100% area poverty) ²	< 100 per 100,000	100-200 per 100,000	> 200 per 100,000	130 per 100,000
Number of sewer systems with a two-fold or greater increase in wastewater SARS-CoV-2 concentration ³	0	1-2	≥ 3	0
Number of new outbreaks in skilled nursing facilities in past 7 days ⁴	≤ 10	11-20	> 20	14
Number of new outbreaks in TK-12 school classrooms in past 7 days ⁴	≤ 7	8-14	≥ 15	11
Number of new outbreaks in PEH settings in past 7 days ⁴	≤ 10	11-20	> 20	9
Number of worksite cluster reports in past 7 days ⁴	< 100	100-300	> 300	227



covid19.lacounty.gov

5/19/2022

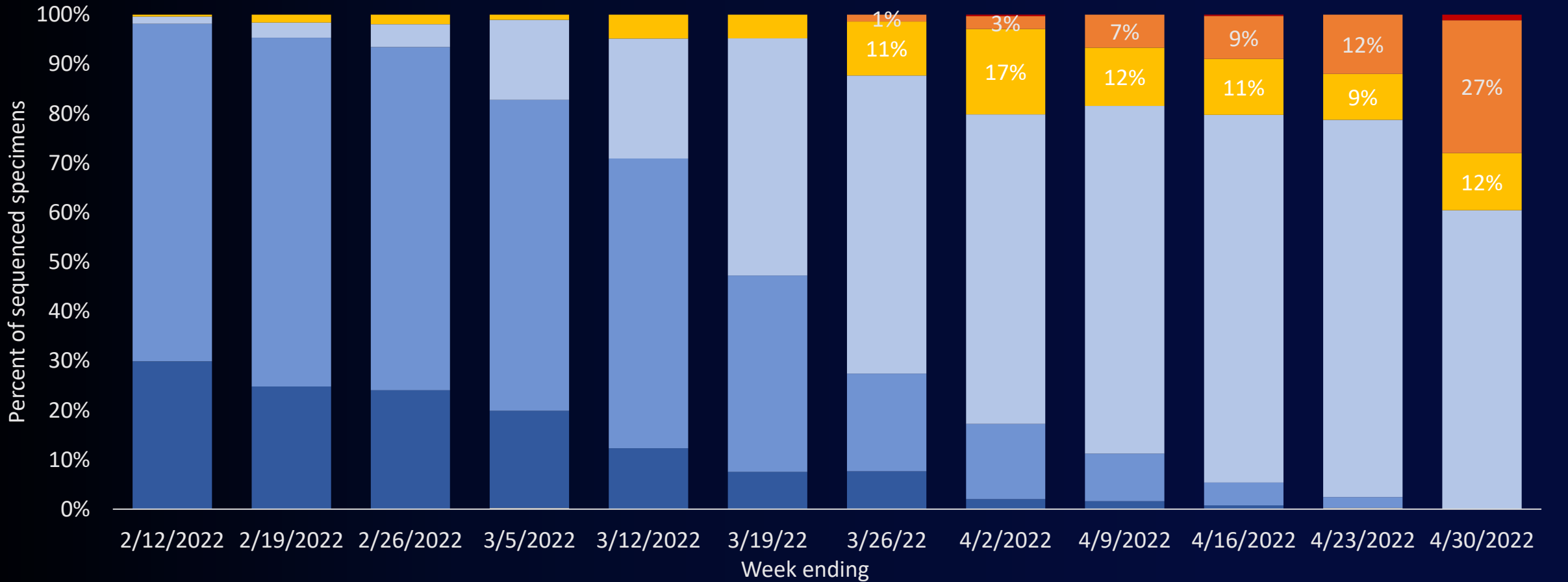
1 Current 7-day period is 4/24/22 - 4/30/22

2 Current 7-day period is 5/9/22 - 5/15/22

3 Current 10-day period is 5/7/22 - 5/16/22

4 Current 7-day period is 5/11/22 - 5/17/22

SARS-CoV-2 Variants as a Percentage of All Specimens Sequenced for Baseline Variant Surveillance



■ Other (Includes Delta)
 ■ All other Omicron
 ■ Omicron BA.1.1*
 ■ Omicron BA.2 (Excludes BA.2.3* and BA.2.12.1)
 ■ Omicron BA.2.3*
 ■ Omicron BA.2.12.1
 ■ Omicron BA.4

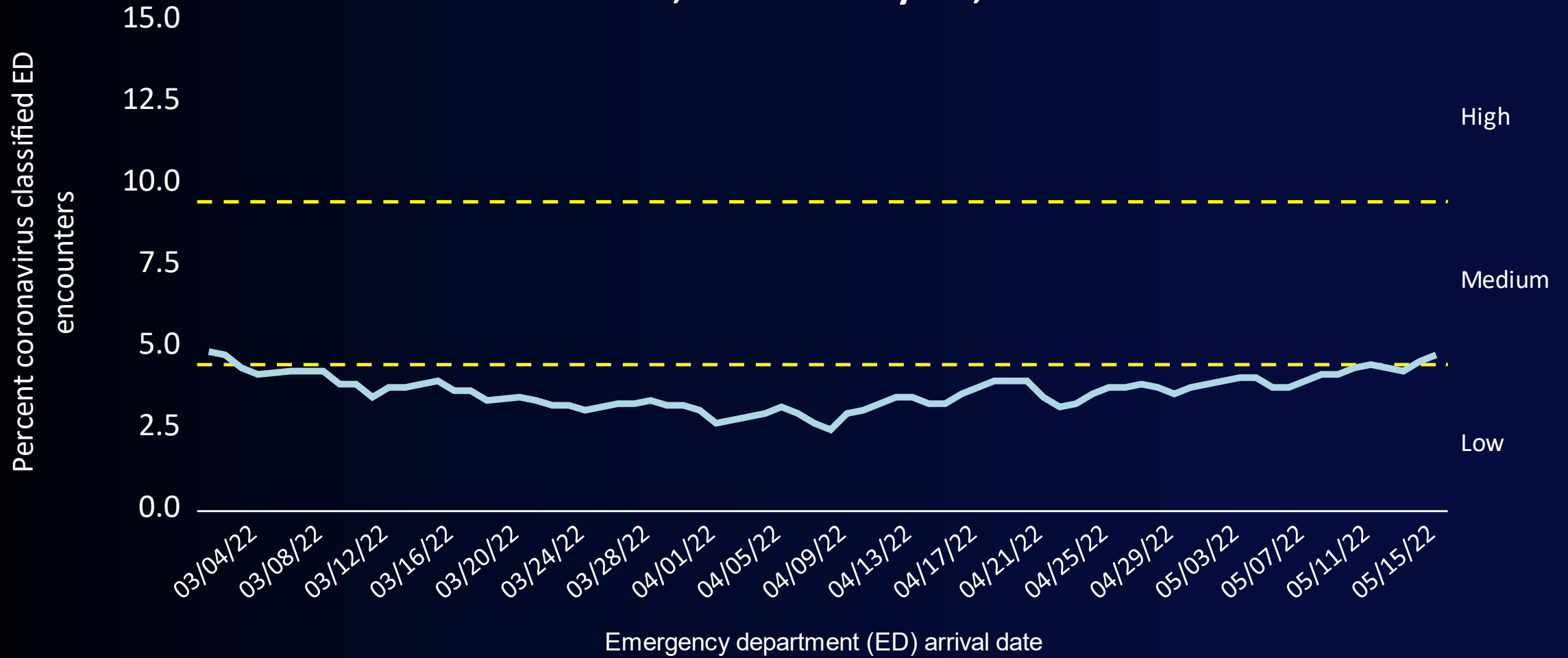


covid19.lacounty.gov

5/19/2022

*Includes descendant lineages (sub-lineages)

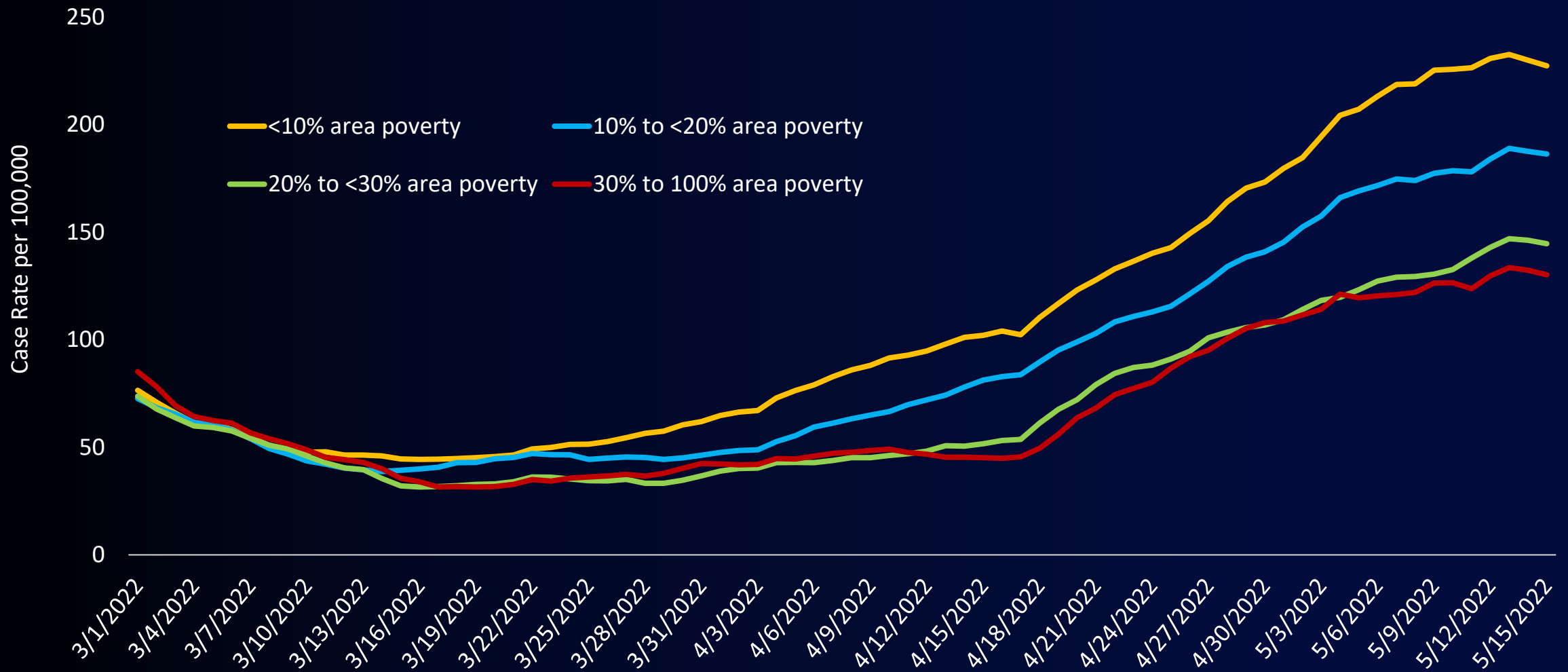
7-Day Average Percent of Emergency Department (ED) Encounters Classified as Coronavirus-Related March 1, 2022 – May 15, 2022



[covid19.lacounty.gov](https://www.covid19.lacounty.gov)

5/19/2022

7-Day Cumulative Crude Case Rate by Area Poverty Level March 1, 2022 – May 15, 2022

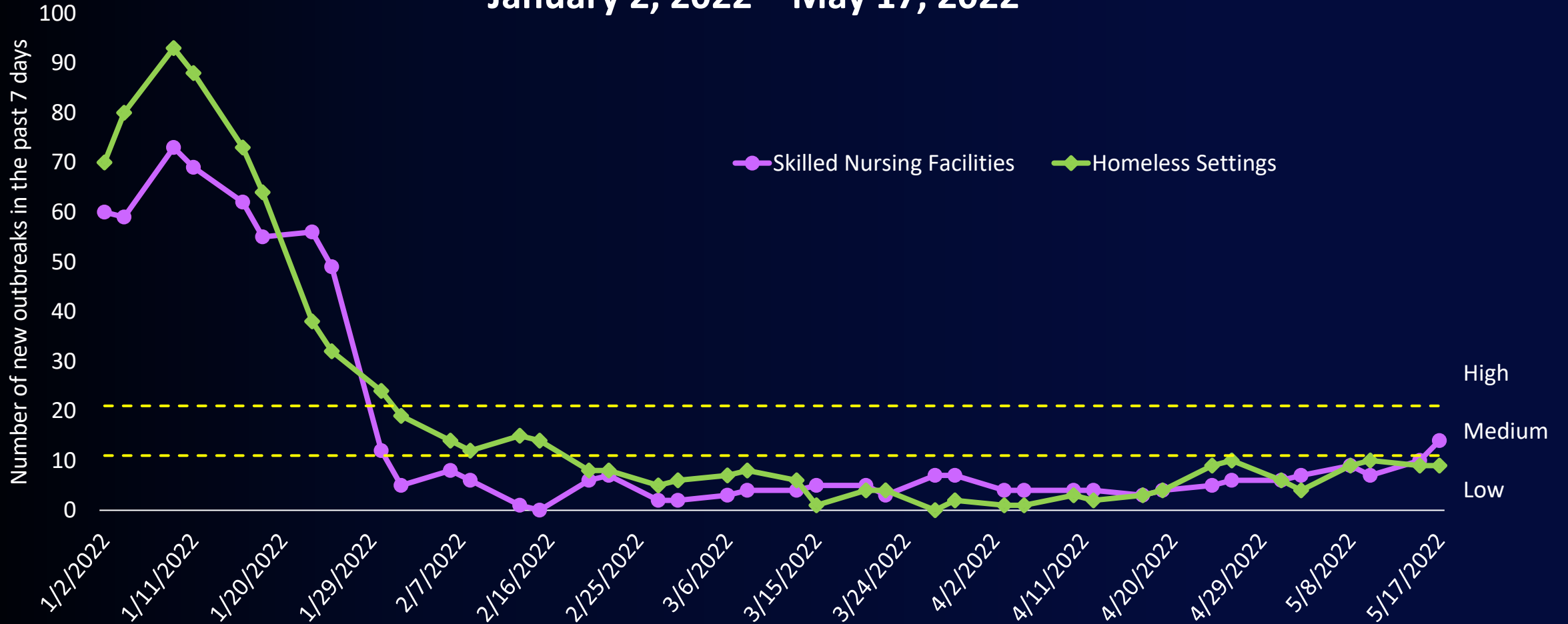


covid19.lacounty.gov

5/19/2022

New Outbreaks in Skilled Nursing Facilities and Homeless Settings in the Past 7 Days

January 2, 2022 – May 17, 2022



covid19.lacounty.gov

5/19/2022

Reducing Risk in Skilled Nursing Facilities: Medium Concern

Masking



- Continue to require all residents and staff to wear masks while indoors.

Testing



- Conduct regular screening testing of staff who are not up to date with COVID vaccines, as required by LAC DPH and State guidance.
- Test all symptomatic staff and residents.
- Test contacts within the facility, as required following exposures.

Isolation and Quarantine



- Conduct contact tracing and assure proper isolation of cases and quarantining of contacts, based on the Los Angeles County Health Officer Order.

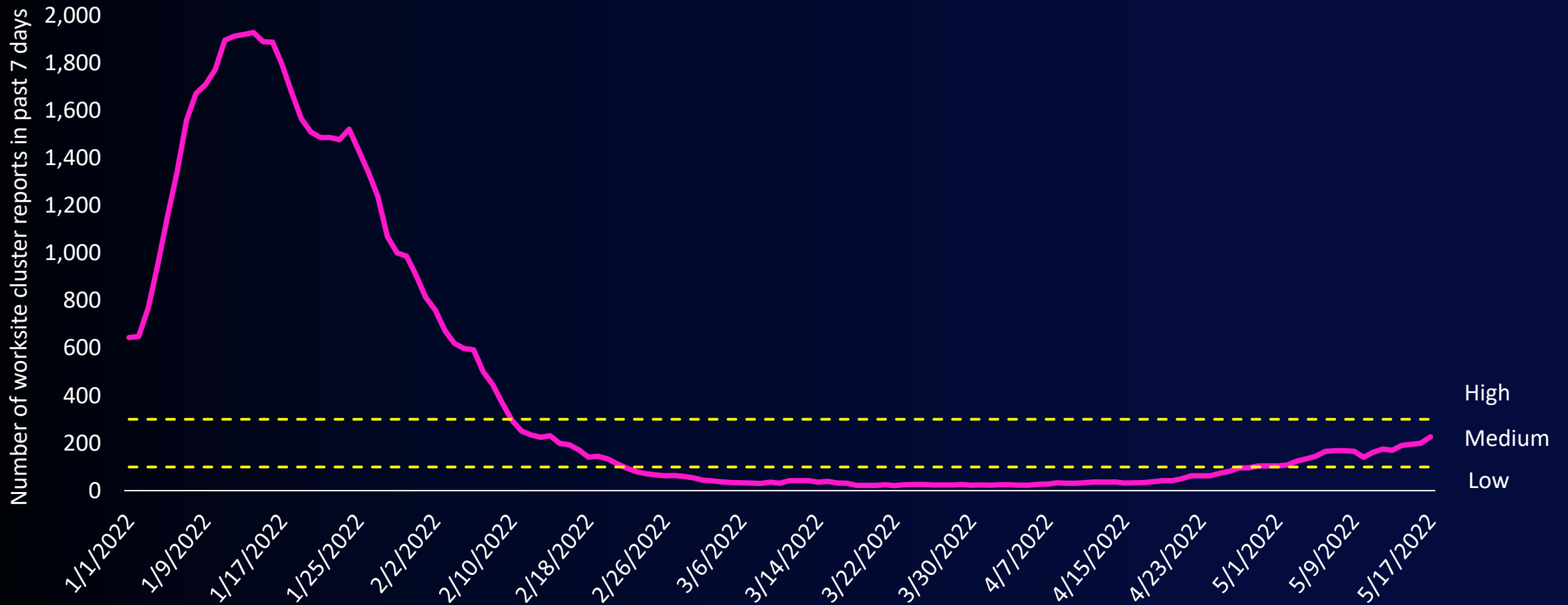
Other Actions



- Require all visitors to be tested prior to indoor visitation.
- Limit communal dining and activities as required by LAC DPH and State guidance.
- Report all cases and outbreaks among staff and residents to LAC DPH.



New Worksite Cluster Reports* in Past 7 Days January 1, 2022 – May 17, 2022



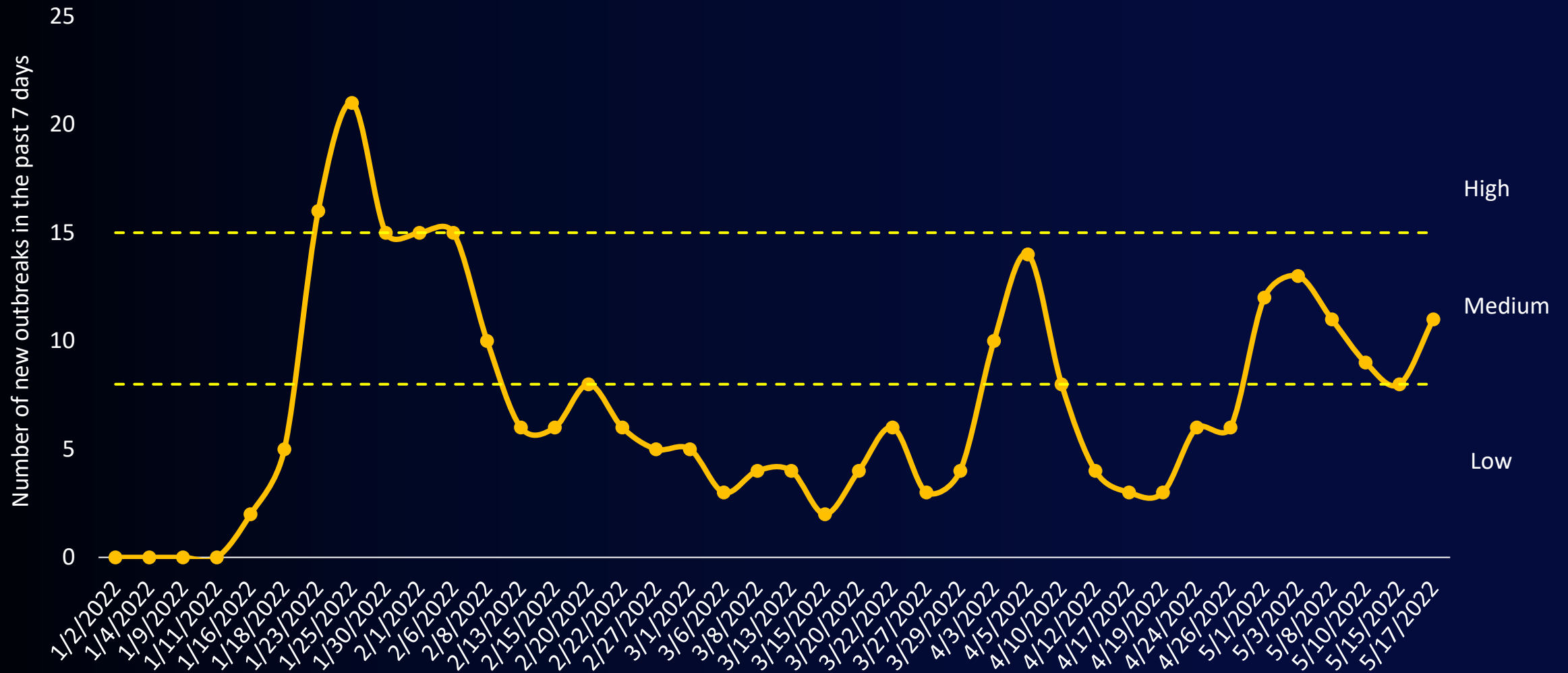
covid19.lacounty.gov

5/19/2022

*Worksite clusters are 3 or more cases within 14 days as reported by an employer. Worksite clusters can represent outbreaks or non-outbreaks and, if there are additional cases, can be multiple reports of the same site.

New Outbreaks in TK-12 School Classrooms* in the Past 7 Days

January 2, 2022 – May 17, 2022



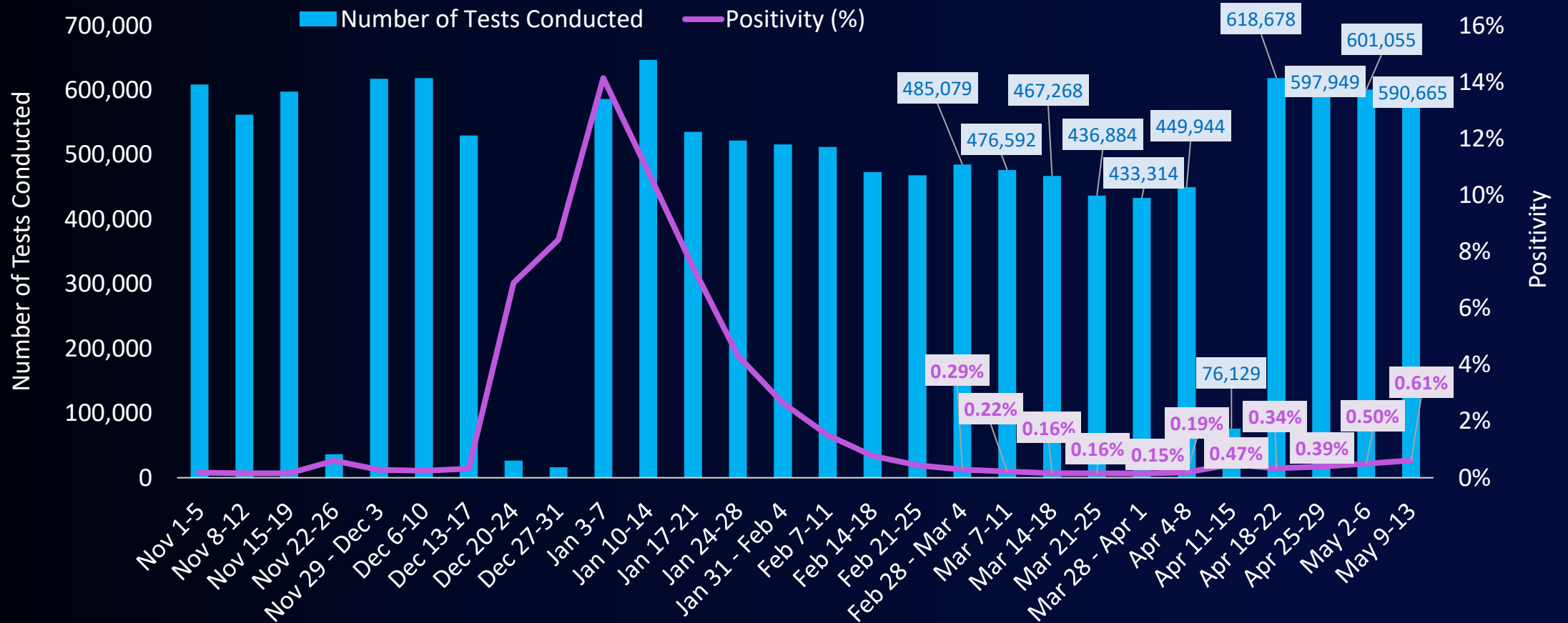
covid19.lacounty.gov

5/19/2022

*Other school-associated outbreaks that are outside of the classroom setting (e.g., youth sports, extracurricular activities, staff only) are excluded

School Testing Volume and Test Positivity

November 1, 2021 – May 13, 2022*

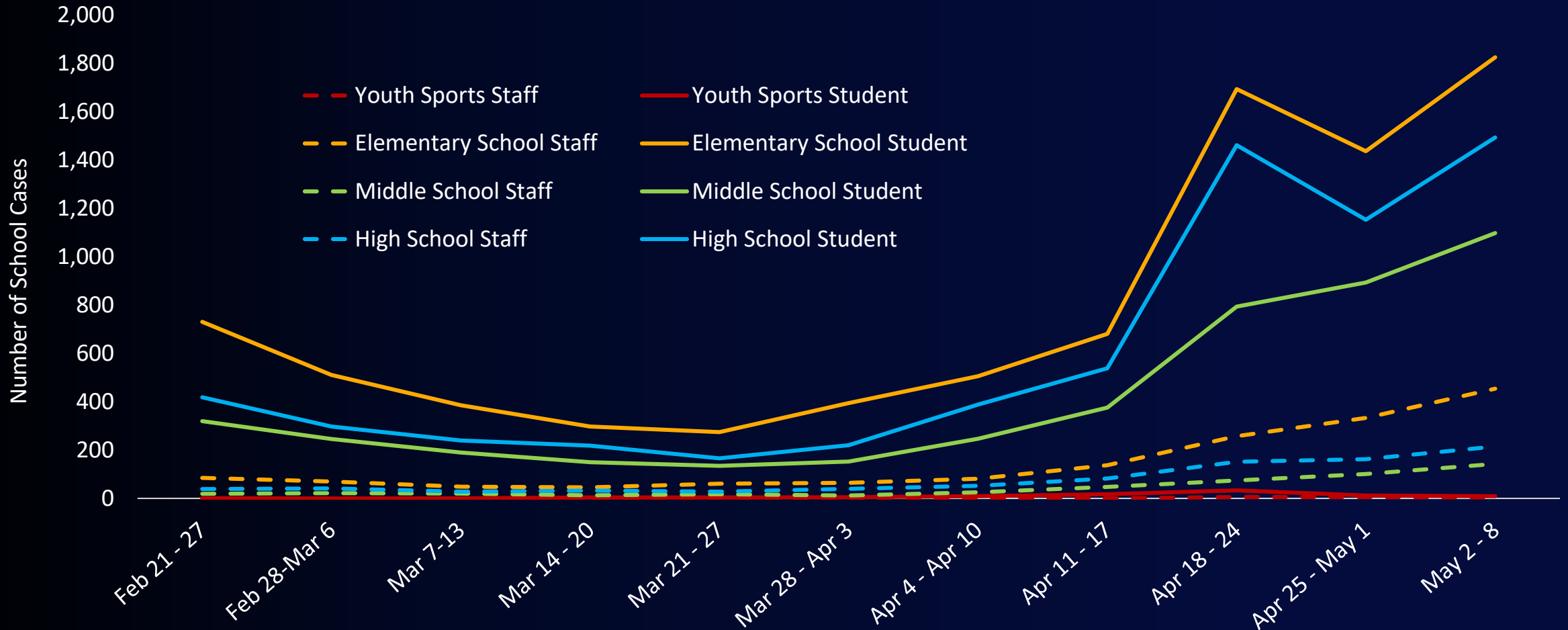


*Most school tests are among asymptomatic, exposed persons as part of weekly screening testing, but could include ad-hoc response testing among symptomatic or exposed persons. School testing data may include repeat tests for a unique individual. Test types reported by schools include PCR, rapid antigen, and over-the-counter tests. For the weeks of Nov 22, 2021, December 20, 2021 – January 2, 2022 and April 11, 2022, testing volume decrease was due to districts/schools being closed for breaks.



TK-12 Cases in Students and Staff* by Grade Level

February 21, 2022 – May 8, 2022



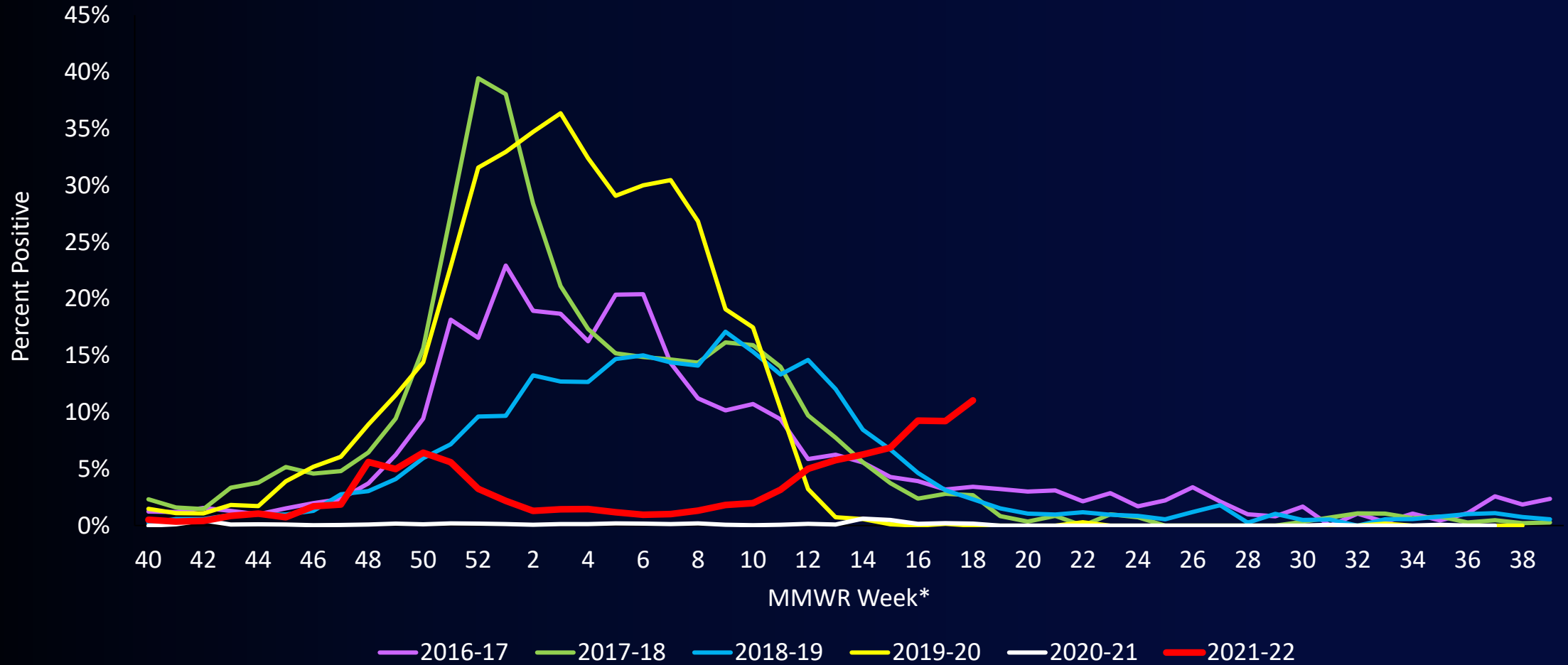
*Staff includes visitors and other adults. Data from the most recent week should be interpreted with caution due to reporting delays. Excludes other/unclassified students and staff who could not be classified in a grade level due to missing data (7% of cases).



covid19.lacounty.gov

5/19/2022

Percentage of Respiratory Specimens Testing Positive for Influenza at LAC Sentinel Surveillance Laboratories by Season



covid19.lacounty.gov

5/19/2022

*MMWR week corresponds to the week numbers associated with CDC's Morbidity and Mortality Weekly Report. Week 1 is the start of each calendar year.

Keeping Each Other Safe While Transmission is High

While cases are increasing, layer on a mask to protect yourself and others!

EVERYONE should consider wearing a mask at indoor gatherings and in indoor public settings, such as businesses, restaurants, theaters, and indoors at TK-12 schools and day cares, especially if they are at **HIGHER RISK** for severe illness or live with someone who is.

REMINDERS

- ✓ Masks are strongly recommended for everyone aged 2 or over, including people who are fully vaccinated and boosted.
- ✓ Masks are required in high-risk settings (e.g., shelters, healthcare settings, long-term care settings, correctional facilities, and on public transit).
- ✓ If you work indoors or in vehicles with others, your employer must provide you with a free well-fitting mask and respirator upon request.
- ✓ Masks must have good fit and good filtration. Respirators like N95s, KN95s, and KF94s are best.



[covid19.lacounty.gov](https://www.covid19.lacounty.gov)

5/19/2022

www.ph.lacounty.gov/masks

Keeping Each Other Safe While Transmission is High



Get Vaccinated and Boosted to be Protected from Severe Illness

- Find a convenient vaccination site or get vaccinated in your home.
- Visit [VaccinateLACounty.com](https://www.vaccinatelacounty.com) and [VacunateLosAngeles.com](https://www.vacunatelosangeles.com) or call (833) 540-0473.



Get Tested If Sick, Exposed, and Before Indoor Gatherings

- Order up to 3 sets of free at-home test kits (total of 16) from www.covidtests.gov or (800) 232-0233.
- Obtain up to 8 free at-home test kits/month for each insured member from health plan.
- If you have symptoms or may have been exposed, get test kits through the County's Home Test Collection Program. Call 211, text (844) 833-1334, or visit www.covid19.lacounty.gov/testing.



Know How to Get Therapeutics if Infected

- Learn about resources or get a free tele-health assessment and, when appropriate, free therapeutics. Call (833) 540-0473, 7 days a week, 8:00 am – 8:30 pm.
- Visit www.ph.lacounty.gov/covidmedicines or www.ph.lacounty.gov/covidmedicamentos.



[covid19.lacounty.gov](https://www.covid19.lacounty.gov)

5/19/2022

Booster Doses Authorized for Children 5 – 11 Years of Age

Vaccine and Booster Doses are Safe and Protect Children

FDA amended the EUA for the Pfizer BioNTech COVID-19 vaccine to allow 5 - 11 year-olds to receive a single booster dose 5 months after the primary series. CDC may issue final approval this week.



90% of children hospitalized (6,700) are unvaccinated
93% of MIS-C cases (739) are unvaccinated



Protection from the primary vaccination series fades over time. FDA's analysis showed that a 3rd shot is safe and can significantly boost antibody levels for 5-11 year olds.



If the ACIP and CDC recommend boosters today, they'll be available late today or tomorrow at our PODS and at many other sites by the weekend.



[covid19.lacounty.gov](https://www.covid19.lacounty.gov)

5/19/2022

Keeping Each Other Safe While Traveling

Follow CDC and Public Health's Updated Testing Guidance

BEFORE TRAVEL: Get a COVID-19 test as close to the time of departure as possible (≤ 3 days before scheduled travel), regardless of vaccination status.

Only proceed with travel if your test is negative.

AFTER TRAVEL: Get a COVID-19 test 3-5 days after you return.



Additional Reminders for COVID-Safe Travel

- Get vaccinated before you travel.
- Stay home if you're sick or test positive.
- Wear a mask or respirator on public transit. In LAC, it's required in airport terminals, train/subway stations, and on all public transit.
- Check the CDC COVID-19 Travel Website if you're taking a cruise or traveling internationally:
www.cdc.gov/coronavirus/2019-ncov/travelers



covid19.lacounty.gov

5/19/2022

www.ph.lacounty.gov/media/Coronavirus/traveladvisory.htm