



HIV/AIDS SEMI-ANNUAL SURVEILLANCE SUMMARY

January 2009

Cases Reported as of December 31, 2008

HIV EPIDEMIOLOGY PROGRAM

600 S. Commonwealth Avenue

Suite 1920

Los Angeles, CA 90005

Phone: (213) 351 -8196

Fax: (213) 487 -9386

[http:// publichealth.lacounty.gov/hiv /](http://publichealth.lacounty.gov/hiv/)

Enriching Lives

NOTICE TO HEALTH CARE PROVIDERS AND OTHERS RESPONSIBLE FOR DISEASE REPORTING:

California Code of Regulations, Title 17, Section 2500 requires that all diagnosed or suspected cases of AIDS as defined by CDC must be reported within seven (7) days to the Health Officer. California Code of Regulations, Title 17, Section 2600/2641.5-2643.20 require both health care providers and laboratories to report HIV cases by name to the Health Officer within seven (7) days. In addition, Senate Bill (SB) 1184 requires each clinical laboratory to report all CD4+ T-cell tests to the local health officer within seven (7) days of the completion of a CD4+ T-cell test. To obtain more information on the HIV/AIDS reporting requirement, or to obtain case report forms or to report a case, please visit our web site: <http://publichealth.lacounty.gov/hiv/hivreporting.htm>, or contact the HIV Epidemiology Program, 600 South Commonwealth Avenue, Suite 1260, Los Angeles, CA 90005. Phone (213) 351-8516; Fax (213) 487-4683.

The *HIV/AIDS Surveillance Summary* is published semiannually by the HIV Epidemiology Program, Los Angeles County Department of Public Health. Copies of this report are available free of charge. Individuals or organizations may be added to the mailing list by contacting the HIV Epidemiology Program at the phone number or address listed above. This report is also available at our web site at <http://publichealth.lacounty.gov/hiv/>.

Suggested Citation: HIV Epidemiology Program, Los Angeles County Department of Public Health. HIV/AIDS Surveillance Summary, January 2009: 1-33.

Los Angeles County Department of Public Health.....Jonathan E. Fielding, M.D, M.P.H.
Director and Health Officer

Communicable Disease Control and PreventionRobert Kim-Farley, M.D., M.P.H.
Director

HIV Epidemiology Program.....Douglas Frye, M.D., M.P.H.
Director

Data Analysis UnitVirginia Hu, M.P.H.
Epidemiologist
Zhijuan Sheng, M.S.
Epidemiologist

Data Acquisition Unit.....Latonya Taylor, R.N., M.S.N./M.P.H.,C.N.S.
Assistant Program Specialist

CONTENTS

Surveillance Summary.....	1
Figure 1: AIDS Cases Reported and Diagnosed by Year, Los Angeles County, 1985- 2008.....	2
Figure 2: Cases of AIDS by Year of Diagnosis and Deaths among AIDS Cases by Year of Death, Los Angeles County.....	3
Table 1: AIDS Cases, Deaths, and Persons Living with AIDS by Year, Los Angeles County	3
Table 2: Cumulative Cases of AIDS by Gender, Age, and Race/Ethnicity, Los Angeles County	4
Table 3: Cumulative Adult/Adolescent Cases of AIDS by Gender, Exposure Category, and Race/Ethnicity, Los Angeles County	5
Table 4: Annual Cases of AIDS and Rates per 100,000 by Gender, Year of Diagnosis, and Race/Ethnicity, Los Angeles County	6
Table 5: Annual Cases of AIDS by Gender, Exposure Category, and Year of Diagnosis, Los Angeles County.....	7
Table 6: Annual White Cases of AIDS by Gender, Exposure Category, and Year of Diagnosis, Los Angeles County.....	8
Table 7: Annual Black Cases of AIDS by Gender, Exposure Category, and Year of Diagnosis, Los Angeles County.....	9
Table 8: Annual Hispanic Cases of AIDS by Gender, Exposure Category, and Year of Diagnosis, Los Angeles County.....	10
Table 9: Cumulative Pediatric Cases of AIDS by Exposure Category and Race/Ethnicity, Los Angeles County.....	11
Table 10: Pediatric Cases of AIDS by Race/Ethnicity, Exposure Category, and Year of Diagnosis, Los Angeles County.....	11
Table 11: Cumulative Adult/Adolescent and Pediatric Cases of Injection Drug-Associated AIDS by Gender, Exposure Category, and Race/Ethnicity, Los Angeles County	12
Table 12: Cumulative Adult/Adolescent AIDS Indicator Conditions at Time of Diagnosis by Gender, Los Angeles County	13
Table 13: Annual Cases of AIDS and Rates per 100,000 by Service Planning Area/Health District of Residence and Year of Diagnosis, Los Angeles County	14
Table 14: Annual Cases of AIDS and Rates per 100,000 by City/Area of Residence and Year of Diagnosis, Top 35 Cities Ranked by 2007 Rate, Los Angeles County	15
Table 15: Reported Numbers and Rates per 100,000 for Persons Diagnosed with AIDS and Persons Living with AIDS as of December 31, 2008 by Gender, Age, Race/Ethnicity, and Exposure Category, Los Angeles County	16
Table 16: Cumulative Number of Persons Diagnosed with AIDS by Gender, Age, Race/Ethnicity, and Exposure Category for each Service Planning Area in Los Angeles County, 1982-2008	17
Table 17: Number of Persons Diagnosed with AIDS and Rate per 100,000 in Year 2007 by Gender, Age, Race/Ethnicity, and Exposure Category for each Service Planning Area in Los Angeles County	18
Table 18: Persons Living with AIDS and Rate per 100,000 at the End of Calendar Year, by Gender, Age, Race/Ethnicity, and Exposure Category, Los Angeles County	19

Table 19:	Persons Living with AIDS and Rate per 100,000 as of December 31, 2008 by Service Planning Area, Gender, Age, Race/Ethnicity, and Exposure Category, Los Angeles County	20
Table 20:	Racial/ethnic- and Gender-Specific Numbers and Percentage for Persons Living with AIDS as of December 31, 2008 by Age, Exposure Category, and Service Planning Area, Los Angeles County ..	21
Table 21:	Annual Adult/Adolescent Cases of AIDS and Rates per 100,000 by Gender, Year of Diagnosis, and Race/Ethnicity, Los Angeles County	22
Table 22:	Annual Deaths among AIDS Cases by Age, Race/Ethnicity, Gender, Exposure Category, and Service Planning Area, Los Angeles County	23
Table 23:	Preliminary Number of Persons Living with Non-AIDS HIV and Rate per 100,000 as of December 31, 2008 by Service Planning Area, Gender, Age, Race/Ethnicity, and Exposure Category, Los Angeles County	24
Table 24:	Preliminary Number of Persons Living with HIV/AIDS and Rate per 100,000 as of December 31, 2008 by Service Planning Area, Gender, Age, Race/Ethnicity, and Exposure Category, Los Angeles County.....	25
Figure 3:	Male Adult/Adolescent AIDS Rates by Race/Ethnicity and Year of Diagnosis, Los Angeles County, 1992-2007	26
Figure 4:	Female Adult/Adolescent AIDS Rates by Race/Ethnicity and Year of Diagnosis, Los Angeles County, 1992-2007	26
Figure 5:	Percent of Adult/Adolescent AIDS Cases by Race/Ethnicity and Year of Diagnosis, Los Angeles County, 1992-2008	27
Figure 6:	Number of Adult/Adolescent AIDS Cases by Race/Ethnicity and Year of Diagnosis, Los Angeles County, 1992-2008	27
Figure 7:	Percent of Adult/Adolescent AIDS Cases by Mode of Exposure and Year of Diagnosis, Los Angeles County, 1992-2008	28
Figure 8:	Adjusted Mode of Exposure for Persons Living with AIDS as of December 31, 2008 by Gender in Los Angeles County	28
Figure 9	Persons Reported Living with HIV/AIDS as of December 31, 2008 and Living HIV/AIDS Rate per 100,000 Population by Service Planning Area in Los Angeles County.....	29
Appendix 1:	2008 Revised Surveillance Case Definitions for Human Immunodeficiency Virus (HIV) Infection Among Adults and Adolescents (aged =13 years)	30
Appendix 2:	AIDS-Defining Conditions	31
Appendix 3:	Technical Notes	32
Figure 10:	Persons Living with HIV/AIDS as of December 31, 2008 by Zip Code and Service Planning Area in Los Angeles County	Back Cover

**Los Angeles County Department of Public Health
HIV Epidemiology Program
AIDS Semi-annual Surveillance Summary, July-December 2008**

Los Angeles County¹

New cases reported this period	869
Deaths reported this period	207
Cumulative cases	54,796
Cumulative deaths	31,117
Living cases	23,679

California²

Cumulative cases	152,318
Cumulative deaths	85,958
Living cases	66,360

United States³

Cumulative cases	1,014,797
Cumulative deaths	565,927
Living cases	448,870

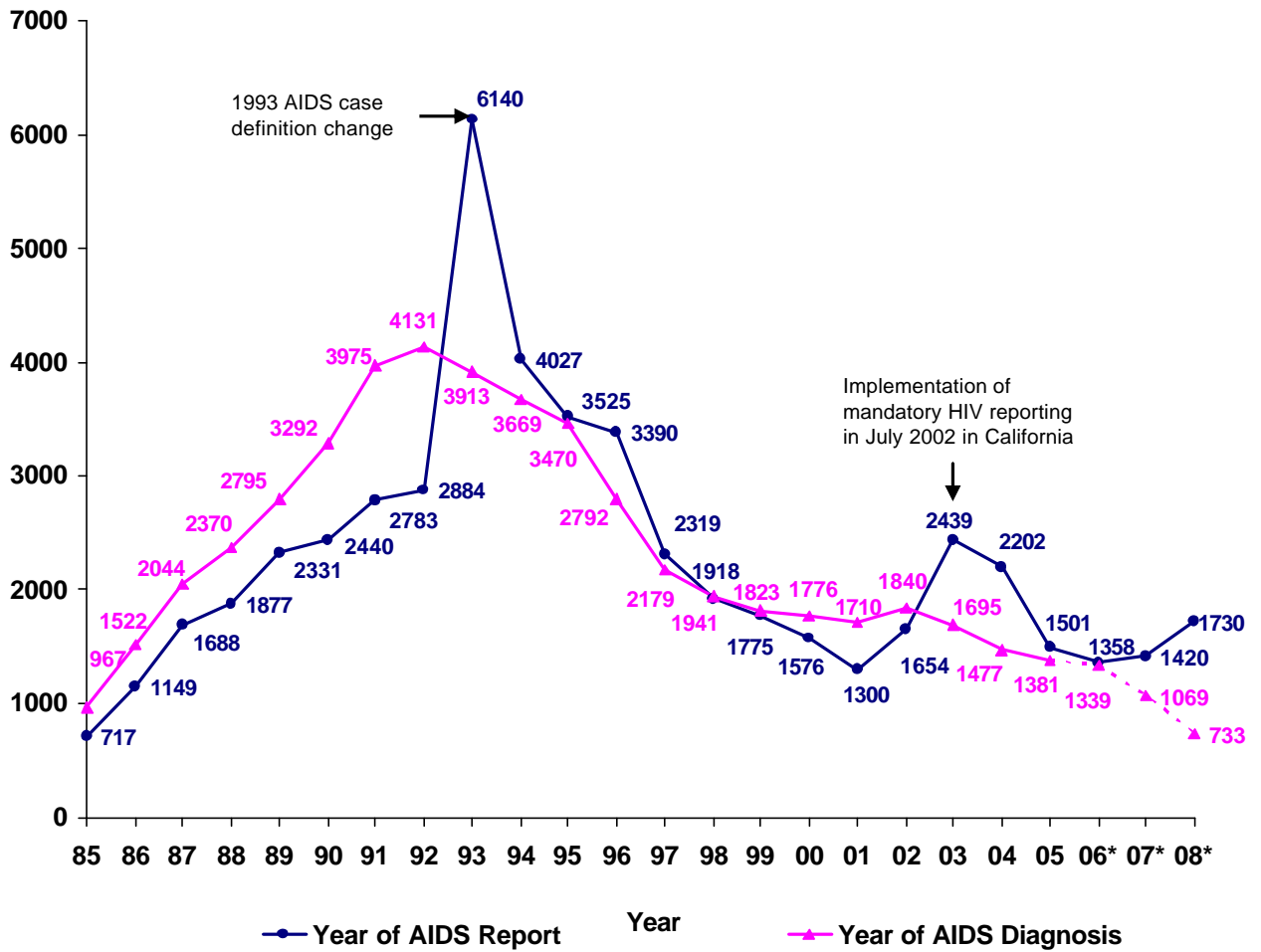
¹ Includes all cases reported to the HIV Epidemiology Program as of December 31, 2008.

² California Office of AIDS, HIV/AIDS Case Registry. Monthly HIV/AIDS Statistics in California, December 31, 2008.

³ Centers for Disease Control and Prevention. HIV/AIDS Surveillance Report, 2006. Vol. 18.

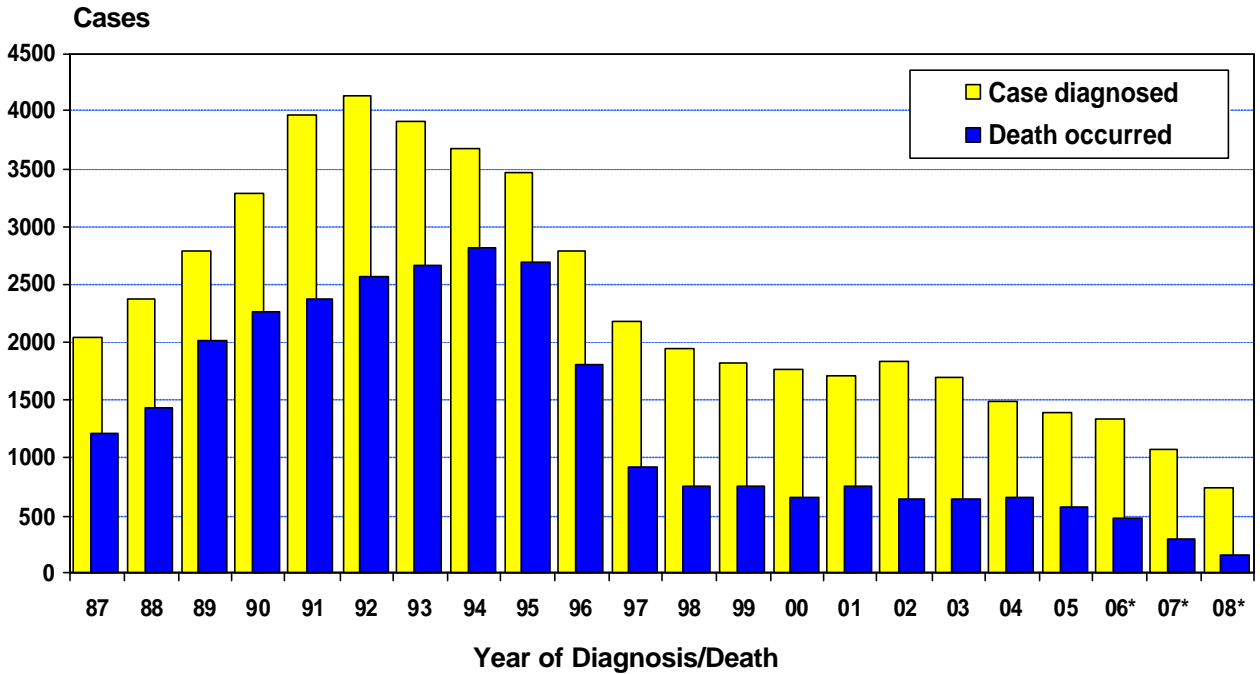
The figures do not represent an enumeration of actual cases for this category. Rather, it is a point estimate of cases for this category that has been adjusted for reporting delay, but not adjusted for incomplete reporting.

FIGURE 1. AIDS CASES REPORTED AND DIAGNOSED BY YEAR, LOS ANGELES COUNTY, 1985-2008



* Cases diagnosed in 2006-2008 are provisional due to reporting delay.

FIGURE 2. CASES OF AIDS BY YEAR OF DIAGNOSIS AND DEATHS AMONG AIDS CASES BY YEAR OF DEATH, LOS ANGELES COUNTY



* Data are provisional for 2006-2008.

TABLE 1. AIDS CASES, DEATHS, AND PERSONS LIVING WITH AIDS BY YEAR REPORTED BY DECEMBER 31, 2008, LOS ANGELES COUNTY

Year	No. of Cases diagnosed	No. of Deaths occurred ¹	No. of Living cases ²
1982- 1989	10591	6665	3926
1990	3292	2260	4958
1991	3975	2382	6551
1992	4131	2569	8113
1993	3913	2657	9369
1994	3669	2826	10212
1995	3470	2700	10982
1996	2792	1797	11977
1997	2179	929	13227
1998	1941	751	14417
1999	1823	757	15483
2000	1776	648	16611
2001	1710	745	17576
2002	1840	633	18783
2003	1695	635	19843
2004	1477	656	20664
2005	1381	570	21475
2006 (3)	1339	474	22340
2007 (3)	1069	307	23102
2008 (3)	733	156	23679
Cumulative	54796	31117	

1. The number of deaths among persons of AIDS is based on the date of death report when the actual year of death is unknown.
 2. Includes persons living with AIDS at the end of each year.
 3. Data are provisional due to reporting delay.

TABLE 2. CUMULATIVE CASES OF AIDS BY GENDER, AGE, AND RACE/ETHNICITY
 REPORTED BY DECEMBER 31, 2008
 LOS ANGELES COUNTY

Age at Diagnosis (years)	Race/Ethnicity					
	White No. (%)	Black No. (%)	Hispanic No. (%)	Asian (1) No. (%)	AI/AN (2) No. (%)	Total (3) No. (%)
MALE						
<13	25 (<1)	51 (1)	58 (<1)	<5 (-)	<5 (-)	138 (<1)
13- 19	37 (<1)	58 (1)	117 (1)	6 (1)	<5 (-)	223 (<1)
20- 29	2772 (12)	1518 (16)	3482 (23)	165 (14)	49 (25)	7997 (16)
30- 39	10358 (44)	4002 (42)	6979 (45)	504 (42)	84 (43)	21975 (44)
40- 49	7051 (30)	2689 (28)	3356 (22)	361 (30)	43 (22)	13531 (27)
50- 59	2601 (11)	885 (9)	1085 (7)	124 (10)	10 (5)	4715 (9)
60+	855 (4)	237 (3)	381 (2)	31 (3)	<5 (-)	1510 (3)
Male subtotal	23699	9440	15458	1194	195	50089
[% of subtotal]	[47]	[19]	[31]	[2]	[<1]	[100]
FEMALE						
<13	19 (2)	36 (2)	55 (3)	<5 (-)	<5 (-)	113 (2)
13- 19	12 (1)	20 (1)	34 (2)	<5 (-)	<5 (-)	71 (2)
20- 29	165 (17)	357 (20)	420 (24)	15 (13)	7 (23)	965 (21)
30- 39	361 (36)	662 (37)	619 (35)	34 (30)	10 (33)	1690 (36)
40- 49	245 (25)	461 (26)	377 (21)	35 (31)	6 (20)	1130 (24)
50- 59	111 (11)	184 (10)	189 (11)	15 (13)	<5 (-)	502 (11)
60+	81 (8)	55 (3)	90 (5)	7 (6)	<5 (-)	236 (5)
Female subtotal	994	1775	1784	113	30	4707
[% of subtotal]	[21]	[38]	[38]	[2]	[1]	[100]
BOTH						
<13	44 (<1)	87 (1)	113 (1)	6 (<1)	<5 (-)	251 (<1)
13- 19	49 (<1)	78 (1)	151 (1)	10 (1)	5 (2)	294 (1)
20- 29	2937 (12)	1875 (17)	3902 (23)	180 (14)	56 (25)	8962 (16)
30- 39	10719 (43)	4664 (42)	7598 (44)	538 (41)	94 (42)	23665 (43)
40- 49	7296 (30)	3150 (28)	3733 (22)	396 (30)	49 (22)	14661 (27)
50- 59	2712 (11)	1069 (10)	1274 (7)	139 (11)	13 (6)	5217 (10)
60+	936 (4)	292 (3)	471 (3)	38 (3)	7 (3)	1746 (3)
Total	24693	11215	17242	1307	225	54796
[% of total]	[45]	[20]	[31]	[2]	[<1]	[100]

1. Includes 12 Burmese, 55 Cambodian, 112 Chinese, 370 Filipino, 19 Guamanian, 40 Hawaiian, 21 Indian, 21 Indonesian, 137 Japanese, 47 Korean, <5 Loatian, 10 Malayan, <5 N Mariannean, 12 Pacific Islander, <5 Pakistani, 32 Samoan, <5 Singaporean, <5 Sri Lankan, <5 Tahitian, 31 Taiwanese, 102 Thai, <5 Tongan, and 105 Vietnamese; 165 are of unknown Asian ethnicity.

2. AI/AN=American Indian/Alaska Native.

3. Includes 103 males and 11 females who have multiple races/ethnicities or have missing information on race/ethnicity.

TABLE 3. CUMULATIVE ADULT/ADOLESCENT CASES OF AIDS BY GENDER, EXPOSURE CATEGORY, AND RACE/ETHNICITY
 REPORTED BY DECEMBER 31, 2008
 LOS ANGELES COUNTY

Adult/Adolescent Exposure Category (1)	Race/Ethnicity					Total (3) No. (%)
	White No. (%)	Black No. (%)	Hispanic No. (%)	Asian No. (%)	AI/AN (2) No. (%)	
MALE						
Male-male sexual contact	19771 (84)	6012 (64)	10694 (69)	921 (77)	138 (71)	37614 (75)
Injection drug user (IDU)	780 (3)	934 (10)	831 (5)	18 (2)	11 (6)	2578 (5)
Male-male sexual contact/IDU	1892 (8)	904 (10)	898 (6)	40 (3)	34 (18)	3777 (8)
Hemophilia or coagulation disorder	99 (<1)	22 (<1)	41 (<1)	10 (1)	<5 (-)	173 (<1)
Heterosexual contact (4)	153 (1)	270 (3)	445 (3)	23 (2)	<5 (-)	893 (2)
Transfusion recipient	140 (1)	43 (<1)	103 (1)	20 (2)	<5 (-)	307 (1)
Mother with/at risk for HIV	<5 (-)	6 (<1)	7 (<1)	<5 (-)	<5 (-)	17 (<1)
Other/Undetermined	837 (4)	1198 (13)	2381 (15)	158 (13)	9 (5)	4592 (9)
Male subtotal	23674	9389	15400	1191	194	49951
[% of subtotal]	[47]	[19]	[31]	[2]	[<1]	[100]
FEMALE						
Injection drug user (IDU)	332 (34)	467 (27)	234 (14)	11 (10)	13 (43)	1064 (23)
Hemophilia or coagulation disorder	8 (1)	6 (<1)	<5 (-)	<5 (-)	<5 (-)	17 (<1)
Heterosexual contact (4)	388 (40)	721 (41)	894 (52)	53 (48)	9 (30)	2068 (45)
Transfusion recipient	79 (8)	59 (3)	109 (6)	18 (16)	<5 (-)	265 (6)
Mother with/at risk for HIV	<5 (-)	<5 (-)	6 (<1)	<5 (-)	<5 (-)	11 (<1)
Other/Undetermined	167 (17)	483 (28)	484 (28)	27 (25)	8 (27)	1169 (25)
Female subtotal	975	1739	1729	110	30	4594
[% of subtotal]	[21]	[38]	[38]	[2]	[1]	[100]
BOTH						
Male-male sexual contact	19771 (80)	6012 (54)	10694 (62)	921 (71)	138 (62)	37614 (69)
Injection drug user (IDU)	1112 (5)	1401 (13)	1065 (6)	29 (2)	24 (11)	3642 (7)
Male-male sexual contact/IDU	1892 (8)	904 (8)	898 (5)	40 (3)	34 (15)	3777 (7)
Hemophilia or coagulation disorder	107 (<1)	28 (<1)	43 (<1)	10 (1)	<5 (-)	190 (<1)
Heterosexual contact (4)	541 (2)	991 (9)	1339 (8)	76 (6)	9 (4)	2961 (5)
Transfusion recipient	219 (1)	102 (1)	212 (1)	38 (3)	<5 (-)	572 (1)
Mother with/at risk for HIV	<5 (-)	9 (<1)	13 (<1)	<5 (-)	<5 (-)	28 (<1)
Other/Undetermined	1004 (4)	1681 (15)	2865 (17)	185 (14)	17 (8)	5761 (11)
Total	24649	11128	17129	1301	224	54545
[% of total]	[45]	[20]	[31]	[2]	[<1]	[100]

1. Exposure categories are ordered hierarchically. Except for the combination listed, cases with multiple exposure categories are included in the category listed first.
2. AI/AN=American Indian/Alaska Native.
3. Includes 103 males and 11 females who have multiple races/ethnicities or have missing information on race/ethnicity.
4. Heterosexual contact with a person who is HIV-infected or at increased risk for HIV.

TABLE 4. ANNUAL CASES OF AIDS AND RATES PER 100,000 (1) BY GENDER, YEAR OF DIAGNOSIS, AND RACE/ETHNICITY REPORTED BY DECEMBER 31, 2008
LOS ANGELES COUNTY

Year of Diagnosis	Race/Ethnicity					Total (2) No. (Rate)
	White No. (Rate)	Black No. (Rate)	Hispanic No. (Rate)	Asian No. (Rate)	AI/AN No. (Rate)	
MALE						
1999	507 (33)	358 (82)	672 (32)	56 (10)	6 (47)	1606 (34)
2000	506 (33)	336 (76)	659 (31)	31 (5)	8 (58)	1541 (33)
2001	465 (30)	327 (74)	627 (28)	43 (7)	9 (65)	1477 (31)
2002	541 (35)	323 (73)	676 (30)	55 (9)	8 (57)	1607 (33)
2003	544 (35)	256 (58)	626 (27)	54 (9)	7 (48)	1490 (30)
2004	405 (26)	238 (54)	586 (25)	52 (8)	6 (41)	1292 (26)
2005	364 (24)	262 (60)	522 (22)	47 (7)	<5 (-)	1201 (24)
2006 (3)	379 (25)	234 (54)	492 (20)	48 (7)	<5 (-)	1161 (23)
2007 (3)	277 (18)	195 (44)	410 (17)	36 (6)	5 (34)	925 (18)
2008 (3)	196 (13)	136 (31)	264 (11)	33 (5)	<5 (-)	635 (12)
Cumulative Male subtotal (4)	23699	9440	15458	1194	195	50089
FEMALE						
1999	35 (2)	96 (19)	80 (4)	6 (1)	<5 (-)	217 (5)
2000	45 (3)	83 (16)	102 (5)	<5 (-)	<5 (-)	235 (5)
2001	35 (2)	80 (16)	107 (5)	9 (1)	<5 (-)	233 (5)
2002	39 (2)	78 (15)	106 (5)	8 (1)	<5 (-)	233 (5)
2003	29 (2)	74 (15)	96 (4)	5 (1)	<5 (-)	205 (4)
2004	35 (2)	76 (15)	66 (3)	5 (1)	<5 (-)	185 (4)
2005	28 (2)	77 (15)	68 (3)	6 (1)	<5 (-)	180 (3)
2006 (3)	21 (1)	68 (14)	81 (3)	<5 (-)	<5 (-)	178 (3)
2007 (3)	24 (2)	58 (12)	56 (2)	<5 (-)	<5 (-)	144 (3)
2008 (3)	11 (1)	45 (9)	39 (2)	<5 (-)	<5 (-)	98 (2)
Cumulative Female subtotal (4)	994	1775	1784	113	30	4707
BOTH						
1999	542 (17)	454 (48)	752 (18)	62 (5)	6 (23)	1823 (19)
2000	551 (18)	419 (44)	761 (18)	35 (3)	9 (32)	1776 (19)
2001	500 (16)	407 (43)	734 (17)	52 (4)	11 (39)	1710 (18)
2002	580 (18)	401 (42)	782 (17)	63 (5)	9 (31)	1840 (19)
2003	573 (18)	330 (35)	722 (16)	59 (5)	8 (27)	1695 (17)
2004	440 (14)	314 (33)	652 (14)	57 (4)	8 (26)	1477 (15)
2005	392 (13)	339 (36)	590 (12)	53 (4)	<5 (-)	1381 (14)
2006 (3)	400 (13)	302 (32)	573 (12)	52 (4)	6 (19)	1339 (13)
2007 (3)	301 (10)	253 (27)	466 (10)	40 (3)	6 (20)	1069 (10)
2008 (3)	207 (7)	181 (19)	303 (6)	36 (3)	<5 (-)	733 (7)
Cumulative Total (4)	24693	11215	17242	1307	225	54796

1. Rates are based on population estimates for 1999-2007. Rates for 2008 are calculated using population estimates for 2007. Rates based on observations fewer than 20 may not be reliable (see Technical Notes, page 32).
2. Total includes persons who have multiple races/ethnicities or have missing information on race/ethnicity.
3. Data are provisional due to reporting delay.
4. Includes persons diagnosed since 1982.

TABLE 5. ANNUAL CASES OF AIDS BY GENDER, EXPOSURE CATEGORY, AND YEAR OF DIAGNOSIS, REPORTED BY DECEMBER 31, 2008, LOS ANGELES COUNTY

Exposure Category (1)	Year of Diagnosis									Cumulative 1982- 2008 No. (%)
	2000 No. (%)	2001 No. (%)	2002 No. (%)	2003 No. (%)	2004 No. (%)	2005 No. (%)	2006(2) No. (%)	2007(2) No. (%)	2008(2) No. (%)	
MALE										
Male-male sexual contact	1007 (65)	964 (65)	1066 (66)	1037 (70)	860 (67)	788 (66)	788 (68)	614 (66)	392 (62)	37614 (75)
Injection drug user (IDU)	91 (6)	91 (6)	83 (5)	67 (4)	64 (5)	53 (4)	37 (3)	24 (3)	14 (2)	2578 (5)
Male-male sexual contact/IDU	123 (8)	113 (8)	116 (7)	106 (7)	78 (6)	73 (6)	80 (7)	72 (8)	37 (6)	3777 (8)
Hemophilia or coagulation disorder	<5 (-)	5 (<1)	<5 (-)	<5 (-)	<5 (-)	<5 (-)	<5 (-)	<5 (-)	<5 (-)	179 (<1)
Heterosexual contact (3)	52 (3)	67 (5)	59 (4)	58 (4)	30 (2)	28 (2)	24 (2)	17 (2)	7 (1)	893 (2)
Transfusion recipient	<5 (-)	<5 (-)	8 (<1)	<5 (-)	<5 (-)	<5 (-)	<5 (-)	<5 (-)	<5 (-)	352 (1)
Mother with/at risk for HIV	<5 (-)	<5 (-)	<5 (-)	<5 (-)	<5 (-)	<5 (-)	5 (<1)	<5 (-)	<5 (-)	102 (<1)
Other/Undetermined	258 (17)	229 (16)	271 (17)	216 (14)	257 (20)	256 (21)	223 (19)	193 (21)	185 (29)	4594 (9)
Male subtotal	1541	1477	1607	1490	1292	1201	1161	925	635	50089
[% of annual cases]	[87]	[86]	[87]	[88]	[87]	[87]	[87]	[87]	[87]	[91]
FEMALE										
Injection drug user (IDU)	44 (19)	45 (19)	47 (20)	26 (13)	33 (18)	32 (18)	24 (13)	11 (8)	10 (10)	1064 (23)
Hemophilia or coagulation disorder	<5 (-)	<5 (-)	<5 (-)	<5 (-)	<5 (-)	<5 (-)	<5 (-)	<5 (-)	<5 (-)	18 (<1)
Heterosexual contact (3)	111 (47)	98 (42)	90 (39)	94 (46)	69 (37)	76 (42)	61 (34)	62 (43)	32 (33)	2068 (44)
Transfusion recipient	<5 (-)	6 (3)	6 (3)	<5 (-)	<5 (-)	<5 (-)	<5 (-)	<5 (-)	<5 (-)	283 (6)
Mother with/at risk for HIV	<5 (-)	<5 (-)	<5 (-)	<5 (-)	<5 (-)	<5 (-)	<5 (-)	<5 (-)	<5 (-)	103 (2)
Other/Undetermined	77 (33)	81 (35)	88 (38)	82 (40)	78 (42)	68 (38)	86 (48)	66 (46)	53 (54)	1171 (25)
Female subtotal	235	233	233	205	185	180	178	144	98	4707
[% of annual cases]	[13]	[14]	[13]	[12]	[13]	[13]	[13]	[13]	[13]	[9]
Total	1776	1710	1840	1695	1477	1381	1339	1069	733	54796

1. Exposure categories are ordered hierarchically, such that persons with multiple exposure categories are included in the category listed first.
2. Data are provisional due to reporting delay.
3. Heterosexual contact indicates contact with a person who is HIV-infected or at increased risk for HIV.

TABLE 6. ANNUAL WHITE CASES OF AIDS BY GENDER, EXPOSURE CATEGORY, AND YEAR OF DIAGNOSIS, REPORTED BY DECEMBER 31, 2008, LOS ANGELES COUNTY

Exposure Category (1)	Year of Diagnosis									Cumulative 1982- 2008 No. (%)
	2000 No. (%)	2001 No. (%)	2002 No. (%)	2003 No. (%)	2004 No. (%)	2005 No. (%)	2006(2) No. (%)	2007(2) No. (%)	2008(2) No. (%)	
MALE										
Male-male sexual contact	387 (76)	351 (75)	411 (76)	432 (79)	320 (79)	279 (77)	297 (78)	201 (73)	146 (74)	19771 (83)
Injection drug user (IDU)	19 (4)	28 (6)	20 (4)	19 (3)	18 (4)	20 (5)	11 (3)	9 (3)	5 (3)	780 (3)
Male-male sexual contact/IDU	54 (11)	47 (10)	57 (11)	53 (10)	35 (9)	32 (9)	31 (8)	32 (12)	17 (9)	1892 (8)
Hemophilia or coagulation disorder	<5 (-)	<5 (-)	<5 (-)	<5 (-)	<5 (-)	<5 (-)	<5 (-)	<5 (-)	<5 (-)	102 (<1)
Heterosexual contact (3)	<5 (-)	7 (2)	<5 (-)	<5 (-)	<5 (-)	<5 (-)	<5 (-)	<5 (-)	<5 (-)	153 (1)
Transfusion recipient	<5 (-)	<5 (-)	<5 (-)	<5 (-)	<5 (-)	<5 (-)	<5 (-)	<5 (-)	<5 (-)	153 (1)
Mother with/at risk for HIV	<5 (-)	<5 (-)	<5 (-)	<5 (-)	<5 (-)	<5 (-)	<5 (-)	<5 (-)	<5 (-)	11 (<1)
Other/Undetermined	42 (8)	29 (6)	47 (9)	36 (7)	28 (7)	30 (8)	35 (9)	30 (11)	28 (14)	837 (4)
Male subtotal	506	465	541	544	405	364	379	277	196	23699
[% of annual cases]	[92]	[93]	[93]	[95]	[92]	[93]	[95]	[92]	[95]	[96]
FEMALE										
Injection drug user (IDU)	14 (31)	14 (40)	16 (41)	5 (17)	15 (43)	10 (36)	7 (33)	<5 (-)	<5 (-)	332 (33)
Hemophilia or coagulation disorder	<5 (-)	<5 (-)	<5 (-)	<5 (-)	<5 (-)	<5 (-)	<5 (-)	<5 (-)	<5 (-)	8 (1)
Heterosexual contact (3)	20 (44)	12 (34)	10 (26)	9 (31)	10 (29)	7 (25)	10 (48)	7 (29)	<5 (-)	388 (39)
Transfusion recipient	<5 (-)	<5 (-)	<5 (-)	<5 (-)	<5 (-)	<5 (-)	<5 (-)	<5 (-)	<5 (-)	86 (9)
Mother with/at risk for HIV	<5 (-)	<5 (-)	<5 (-)	<5 (-)	<5 (-)	<5 (-)	<5 (-)	<5 (-)	<5 (-)	13 (1)
Other/Undetermined	11 (24)	8 (23)	13 (33)	13 (45)	9 (26)	9 (32)	<5 (-)	14 (58)	5 (45)	167 (17)
Female subtotal	45	35	39	29	35	28	21	24	11	994
[% of annual cases]	[8]	[7]	[7]	[5]	[8]	[7]	[5]	[8]	[5]	[4]
Total	551	500	580	573	440	392	400	301	207	24693

1. Exposure categories are ordered hierarchically, such that persons with multiple exposure categories are included in the category listed first.
2. Data are provisional due to reporting delay.
3. Heterosexual contact indicates contact with a person who is HIV-infected or at increased risk for HIV.

TABLE 7. ANNUAL BLACK CASES OF AIDS BY GENDER, EXPOSURE CATEGORY, AND YEAR OF DIAGNOSIS, REPORTED BY DECEMBER 31, 2008, LOS ANGELES COUNTY

Exposure Category (1)	Year of Diagnosis									Cumulative 1982- 2008 No. (%)
	2000 No. (%)	2001 No. (%)	2002 No. (%)	2003 No. (%)	2004 No. (%)	2005 No. (%)	2006(2) No. (%)	2007(2) No. (%)	2008(2) No. (%)	
MALE										
Male-male sexual contact	182 (54)	188 (57)	189 (59)	156 (61)	136 (57)	148 (56)	143 (61)	123 (63)	73 (54)	6012 (64)
Injection drug user (IDU)	34 (10)	29 (9)	27 (8)	21 (8)	15 (6)	18 (7)	8 (3)	5 (3)	<5 (-)	934 (10)
Male-male sexual contact/IDU	30 (9)	28 (9)	23 (7)	16 (6)	18 (8)	13 (5)	24 (10)	16 (8)	9 (7)	904 (10)
Hemophilia or coagulation disorder	<5 (-)	<5 (-)	<5 (-)	<5 (-)	<5 (-)	<5 (-)	<5 (-)	<5 (-)	<5 (-)	22 (<1)
Heterosexual contact (3)	16 (5)	19 (6)	9 (3)	16 (6)	6 (3)	9 (3)	8 (3)	6 (3)	<5 (-)	270 (3)
Transfusion recipient	<5 (-)	<5 (-)	<5 (-)	<5 (-)	<5 (-)	<5 (-)	<5 (-)	<5 (-)	<5 (-)	54 (1)
Mother with/at risk for HIV	<5 (-)	<5 (-)	<5 (-)	<5 (-)	<5 (-)	<5 (-)	<5 (-)	<5 (-)	<5 (-)	44 (<1)
Other/Undetermined	72 (21)	59 (18)	72 (22)	46 (18)	62 (26)	74 (28)	50 (21)	44 (23)	46 (34)	1200 (13)
Male subtotal	336	327	323	256	238	262	234	195	136	9440
[% of annual cases]	[80]	[80]	[81]	[78]	[76]	[77]	[77]	[77]	[75]	[84]
FEMALE										
Injection drug user (IDU)	21 (25)	17 (21)	21 (27)	16 (22)	11 (14)	13 (17)	8 (12)	<5 (-)	5 (11)	467 (26)
Hemophilia or coagulation disorder	<5 (-)	<5 (-)	<5 (-)	<5 (-)	<5 (-)	<5 (-)	<5 (-)	<5 (-)	<5 (-)	6 (<1)
Heterosexual contact (3)	34 (41)	30 (38)	21 (27)	34 (46)	24 (32)	34 (44)	20 (29)	24 (41)	12 (27)	721 (41)
Transfusion recipient	<5 (-)	<5 (-)	<5 (-)	<5 (-)	<5 (-)	<5 (-)	<5 (-)	<5 (-)	<5 (-)	62 (3)
Mother with/at risk for HIV	<5 (-)	<5 (-)	<5 (-)	<5 (-)	<5 (-)	<5 (-)	<5 (-)	<5 (-)	<5 (-)	36 (2)
Other/Undetermined	27 (33)	30 (38)	34 (44)	23 (31)	38 (50)	29 (38)	36 (53)	30 (52)	26 (58)	483 (27)
Female subtotal	83	80	78	74	76	77	68	58	45	1775
[% of annual cases]	[20]	[20]	[19]	[22]	[24]	[23]	[23]	[23]	[25]	[16]
Total	419	407	401	330	314	339	302	253	181	11215

1. Exposure categories are ordered hierarchically, such that persons with multiple exposure categories are included in the category listed first.
2. Data are provisional due to reporting delay.
3. Heterosexual contact indicates contact with a person who is HIV-infected or at increased risk for HIV.

TABLE 8. ANNUAL HISPANIC CASES OF AIDS BY GENDER, EXPOSURE CATEGORY, AND YEAR OF DIAGNOSIS, REPORTED BY DECEMBER 31, 2008, LOS ANGELES COUNTY

Exposure Category (1)	Year of Diagnosis									Cumulative 1982- 2008 No. (%)
	2000 No. (%)	2001 No. (%)	2002 No. (%)	2003 No. (%)	2004 No. (%)	2005 No. (%)	2006(2) No. (%)	2007(2) No. (%)	2008(2) No. (%)	
MALE										
Male-male sexual contact	406 (62)	382 (61)	430 (64)	399 (64)	365 (62)	326 (62)	313 (64)	264 (64)	147 (56)	10694 (69)
Injection drug user (IDU)	38 (6)	33 (5)	33 (5)	25 (4)	28 (5)	14 (3)	17 (3)	8 (2)	5 (2)	831 (5)
Male-male sexual contact/IDU	37 (6)	34 (5)	28 (4)	36 (6)	22 (4)	24 (5)	25 (5)	23 (6)	10 (4)	898 (6)
Hemophilia or coagulation disorder	<5 (-)	<5 (-)	<5 (-)	<5 (-)	<5 (-)	<5 (-)	<5 (-)	<5 (-)	<5 (-)	44 (<1)
Heterosexual contact (3)	35 (5)	39 (6)	42 (6)	36 (6)	16 (3)	18 (3)	9 (2)	8 (2)	<5 (-)	445 (3)
Transfusion recipient	<5 (-)	<5 (-)	6 (1)	<5 (-)	<5 (-)	<5 (-)	<5 (-)	<5 (-)	<5 (-)	122 (1)
Mother with/at risk for HIV	<5 (-)	<5 (-)	<5 (-)	<5 (-)	<5 (-)	<5 (-)	<5 (-)	<5 (-)	<5 (-)	43 (<1)
Other/Undetermined	139 (21)	134 (21)	136 (20)	126 (20)	154 (26)	139 (27)	123 (25)	106 (26)	100 (38)	2381 (15)
Male subtotal	659	627	676	626	586	522	492	410	264	15458
[% of annual cases]	[87]	[85]	[86]	[87]	[90]	[88]	[86]	[88]	[87]	[90]
FEMALE										
Injection drug user (IDU)	8 (8)	12 (11)	8 (8)	5 (5)	7 (11)	7 (10)	6 (7)	5 (9)	<5 (-)	234 (13)
Hemophilia or coagulation disorder	<5 (-)	<5 (-)	<5 (-)	<5 (-)	<5 (-)	<5 (-)	<5 (-)	<5 (-)	<5 (-)	<5 (-)
Heterosexual contact (3)	54 (53)	51 (48)	57 (54)	45 (47)	32 (48)	31 (46)	30 (37)	29 (52)	17 (44)	894 (50)
Transfusion recipient	<5 (-)	<5 (-)	<5 (-)	<5 (-)	<5 (-)	<5 (-)	<5 (-)	<5 (-)	<5 (-)	115 (6)
Mother with/at risk for HIV	<5 (-)	<5 (-)	<5 (-)	<5 (-)	<5 (-)	<5 (-)	<5 (-)	<5 (-)	<5 (-)	53 (3)
Other/Undetermined	38 (37)	40 (37)	37 (35)	46 (48)	26 (39)	29 (43)	43 (53)	19 (34)	21 (54)	486 (27)
Female subtotal	102	107	106	96	66	68	81	56	39	1784
[% of annual cases]	[13]	[15]	[14]	[13]	[10]	[12]	[14]	[12]	[13]	[10]
Total	761	734	782	722	652	590	573	466	303	17242

1. Exposure categories are ordered hierarchically, such that persons with multiple exposure categories are included in the category listed first.
2. Data are provisional due to reporting delay.
3. Heterosexual contact indicates contact with a person who is HIV-infected or at increased risk for HIV.

**TABLE 9. CUMULATIVE PEDIATRIC CASES OF AIDS BY EXPOSURE CATEGORY AND RACE/ETHNICITY
REPORTED BY DECEMBER 31, 2008
LOS ANGELES COUNTY**

Pediatric (<13 years) Exposure Category (1)	Race/Ethnicity				
	White No. (%)	Black No. (%)	Hispanic No. (%)	Other No. (%)	Total No. (%)
Hemophilia/coagulation disorder	3 (7)	0 (0)	3 (3)	1 (14)	7 (3)
Mother with/at risk for HIV	21 (48)	71 (82)	83 (73)	2 (29)	177 (71)
Transfusion recipient	20 (45)	14 (16)	25 (22)	4 (57)	63 (25)
Other/Undetermined	0 (0)	2 (2)	2 (2)	0 (0)	4 (2)
Total	44	87	113	7	251
[% of total]	[18]	[35]	[45]	[3]	[100]

**TABLE 10. PEDIATRIC CASES OF AIDS BY RACE/ETHNICITY, EXPOSURE CATEGORY, AND YEAR OF DIAGNOSIS
REPORTED BY DECEMBER 31, 2008
LOS ANGELES COUNTY**

Pediatric (<13 years)	Year of Diagnosis					
	Before 2004 No. (%)	2004 No. (%)	2005 No. (%)	2006 (2) No. (%)	2007 (2) No. (%)	2008 (2) No. (%)
RACE/ETHNICITY						
White	43 (17)	0 (0)	1 (50)	0 (-)	0 (-)	0 (0)
Black	85 (35)	1 (50)	0 (0)	0 (-)	0 (-)	1 (100)
Hispanic	112 (46)	0 (0)	1 (50)	0 (-)	0 (-)	0 (0)
Other	6 (2)	1 (50)	0 (0)	0 (-)	0 (-)	0 (0)
EXPOSURE CATEGORY (1)						
Hemophilia/coagulation disorder	7 (3)	0 (0)	0 (0)	0 (-)	0 (-)	0 (0)
Mother with/at risk for HIV	172 (70)	2 (100)	2 (100)	0 (-)	0 (-)	1 (100)
Transfusion recipient	63 (26)	0 (0)	0 (0)	0 (-)	0 (-)	0 (0)
Other/Undetermined	4 (2)	0 (0)	0 (0)	0 (-)	0 (-)	0 (0)
Total	246	2	2	0	0	1
[% of total]	[98]	[1]	[1]	[-]	[-]	[0]

1. Exposure categories are ordered hierarchically. Except for the combination listed, persons with multiple exposure categories are included in the category listed first.
2. Data are provisional due to reporting delay.

TABLE 11. CUMULATIVE ADULT/ADOLESCENT AND PEDIATRIC CASES OF INJECTION DRUG-ASSOCIATED AIDS
 BY GENDER, EXPOSURE CATEGORY, AND RACE/ETHNICITY
 REPORTED BY DECEMBER 31, 2008
 LOS ANGELES COUNTY

Exposure Category (1)	Race/Ethnicity				
	White No. (%)	Black No. (%)	Hispanic No. (%)	Other No. (%)	Total (2) No. (%)
ADULT/ADOLESCENT					
Male					
Injection drug user (IDU)	780 (29)	934 (49)	831 (45)	29 (27)	2578 (39)
Male-male sexual contact/IDU	1892 (69)	904 (47)	898 (48)	74 (69)	3777 (57)
Sex with IDU	57 (2)	84 (4)	122 (7)	<5 (-)	267 (4)
Mother was IDU	<5 (-)	<5 (-)	<5 (-)	<5 (-)	5 (<1)
Mother had sex with IDU	<5 (-)	<5 (-)	<5 (-)	<5 (-)	<5 (-)
Adult male subtotal	2731	1924	1853	107	6629
[% of subtotal]	[41]	[29]	[28]	[2]	[100]
Female					
Injection drug user (IDU)	332 (76)	467 (75)	234 (63)	24 (69)	1064 (72)
Sex with IDU	102 (23)	151 (24)	139 (37)	11 (31)	403 (27)
Mother was IDU	<5 (-)	<5 (-)	<5 (-)	<5 (-)	<5 (-)
Mother had sex with IDU	<5 (-)	<5 (-)	<5 (-)	<5 (-)	<5 (-)
Adult female subtotal	435	619	374	35	1470
[% of subtotal]	[30]	[42]	[25]	[2]	[100]
Adult subtotal	3166	2543	2227	142	8099
[% of subtotal]	[39]	[31]	[27]	[2]	[100]
PEDIATRIC (<13 YEARS)					
Mother was IDU	8 (62)	17 (68)	7 (33)	<5 (-)	32 (53)
Mother had sex with IDU	5 (38)	8 (32)	14 (67)	<5 (-)	28 (47)
Pediatric subtotal	13	25	21	<5	60
[% of subtotal]	[22]	[42]	[35]	[-]	[100]
Total	3179	2568	2248	143	8159
[% of total]	[39]	[31]	[28]	[2]	[100]

1. Exposure categories are ordered hierarchically. Except for the combination listed, persons with multiple exposure categories are included in the category listed first.
2. Total includes persons who have multiple races/ethnicities or have missing information on race/ethnicity.

TABLE 12. CUMULATIVE ADULT/ADOLESCENT AIDS INDICATOR CONDITIONS AT TIME OF DIAGNOSIS (1) BY GENDER
 REPORTED BY DECEMBER 31, 2008
 LOS ANGELES COUNTY

Indicator Condition (2)	Gender		Total No. (%)
	Male No. (%)	Female No. (%)	
Candidiasis of bronchi, trachea, or lungs	490 (1)	52 (1)	542 (1)
Candidiasis of esophagus	2474 (5)	285 (6)	2759 (5)
Carcinoma, invasive cervical	- (-)	25 (1)	25 (<1)
Coccidioidomycosis, disseminated or extrapulmonary	119 (<1)	9 (<1)	128 (<1)
Cryptococcosis, extrapulmonary	1743 (3)	98 (2)	1841 (3)
Cryptosporidiosis, chronic intestinal	877 (2)	34 (1)	911 (2)
Cytomegalovirus disease other than retinitis	1420 (3)	80 (2)	1500 (3)
Cytomegalovirus retinitis	944 (2)	52 (1)	996 (2)
HIV encephalopathy	1048 (2)	66 (1)	1114 (2)
Herpes simplex: chronic ulcers, pneumonitis or esophagitis	1459 (3)	147 (3)	1606 (3)
Histoplasmosis, disseminated or extrapulmonary	170 (<1)	12 (<1)	182 (<1)
Isosporiasis, chronic intestinal	160 (<1)	9 (<1)	169 (<1)
Kaposi's sarcoma	4812 (10)	33 (1)	4845 (9)
Lymphoma, Burkitt's	250 (1)	14 (<1)	264 (<1)
Lymphoma, immunoblastic	715 (1)	27 (1)	742 (1)
Lymphoma, primary in brain	164 (<1)	<5 (-)	167 (<1)
Mycobacterium avium or M. kansasii, disseminated	1332 (3)	65 (1)	1397 (3)
M. tuberculosis, pulmonary	1167 (2)	144 (3)	1311 (2)
M. tuberculosis, disseminated or extrapulmonary	818 (2)	102 (2)	920 (2)
Mycobacterium, other or unidentified species	290 (1)	20 (<1)	310 (1)
Pneumocystis carinii pneumonia	12192 (24)	741 (16)	12933 (24)
Pneumonia, recurrent	239 (<1)	51 (1)	290 (1)
Progressive multifocal leukoencephalopathy	208 (<1)	7 (<1)	215 (<1)
Salmonella septicemia, recurrent	72 (<1)	5 (<1)	77 (<1)
Toxoplasmosis of the brain	1093 (2)	89 (2)	1182 (2)
Wasting syndrome	3136 (6)	236 (5)	3372 (6)
CD4 < 200ul	27091 (54)	3188 (69)	30279 (56)
Total	49951	4594	54545

1. The table provides only a minimum estimate of indicator conditions because date of diagnosis may be missing for some indicator conditions.
2. Persons may have more than one condition at time of AIDS diagnosis.

TABLE 13. ANNUAL CASES OF AIDS AND RATES PER 100,000 (1)
 BY SERVICE PLANNING AREA/HEALTH DISTRICT OF RESIDENCE AND YEAR OF DIAGNOSIS
 REPORTED BY DECEMBER 31, 2008
 LOS ANGELES COUNTY

Service Planning Area/ Health District	Year of Diagnosis										Cumulative Total (3) No. (%)	
	2004		2005		2006 (2)		2007 (2)		2008 (2)			
	No.	(%) Rate	No.	(%) Rate	No.	(%) Rate	No.	(%) Rate	No.	(%) Rate		
Antelope Valley[1]	22	(1) 7	20	(1) 6	16	(1) 5	17	(2) 5	14	(2) 4	556	(1)
Antelope Valley	22	(1) 7	20	(1) 6	16	(1) 5	17	(2) 5	14	(2) 4	556	(1)
San Fernando[2]	167	(11) 8	179	(13) 8	173	(13) 8	127	(12) 6	83	(11) 4	7785	(14)
East Valley	52	(4) 12	56	(4) 12	64	(5) 14	44	(4) 10	23	(3) 5	2990	(5)
Glendale	28	(2) 8	17	(1) 5	32	(2) 9	20	(2) 6	7	(1) 2	1212	(2)
San Fernando	24	(2) 5	28	(2) 6	20	(1) 4	11	(1) 2	9	(1) 2	730	(1)
West Valley	63	(4) 7	78	(6) 9	57	(4) 7	52	(5) 6	44	(6) 5	2853	(5)
San Gabriel [3]	131	(9) 7	90	(7) 5	93	(7) 5	67	(6) 4	62	(8) 3	4040	(7)
Alhambra	21	(1) 6	13	(1) 4	14	(1) 4	10	(1) 3	8	(1) 2	693	(1)
El Monte	38	(3) 8	29	(2) 6	25	(2) 5	15	(1) 3	11	(2) 2	914	(2)
Foothill	16	(1) 5	11	(1) 4	13	(1) 4	9	(1) 3	12	(2) 4	662	(1)
Pasadena	13	(1) 9	6	(<1) 4	16	(1) 11	11	(1) 7	12	(2) 8	730	(1)
Pomona	43	(3) 8	31	(2) 6	25	(2) 4	22	(2) 4	19	(3) 3	1041	(2)
Metro[4]	436	(30) 36	422	(31) 34	426	(32) 34	325	(30) 26	230	(31) 18	21282	(39)
Central	156	(11) 44	166	(12) 46	171	(13) 47	138	(13) 37	104	(14) 28	6398	(12)
Hollywood-Wilshire	235	(16) 44	207	(15) 39	210	(16) 39	150	(14) 28	86	(12) 16	12498	(23)
Northeast	45	(3) 14	49	(4) 14	45	(3) 13	37	(3) 11	40	(5) 11	2386	(4)
West[5]	67	(5) 11	60	(4) 9	61	(5) 10	57	(5) 9	22	(3) 3	3190	(6)
West	67	(5) 11	60	(4) 9	61	(5) 10	57	(5) 9	22	(3) 3	3190	(6)
South[6]	184	(12) 18	187	(14) 18	169	(13) 16	128	(12) 12	86	(12) 8	5543	(10)
Compton	34	(2) 12	31	(2) 11	25	(2) 9	29	(3) 10	19	(3) 6	957	(2)
South	33	(2) 19	41	(3) 23	27	(2) 15	21	(2) 11	16	(2) 9	919	(2)
Southeast	31	(2) 18	33	(2) 19	29	(2) 16	15	(1) 8	11	(2) 6	842	(2)
Southwest	86	(6) 23	82	(6) 22	88	(7) 23	63	(6) 16	40	(5) 10	2825	(5)
East[7]	108	(7) 8	86	(6) 6	78	(6) 6	57	(5) 4	51	(7) 4	3245	(6)
Bellflower	21	(1) 6	15	(1) 4	12	(1) 3	9	(1) 2	12	(2) 3	673	(1)
East Los Angeles	24	(2) 11	22	(2) 10	16	(1) 7	12	(1) 5	9	(1) 4	734	(1)
San Antonio	36	(2) 8	30	(2) 7	30	(2) 7	24	(2) 5	16	(2) 4	1155	(2)
Whittier	27	(2) 8	19	(1) 6	20	(1) 6	12	(1) 4	14	(2) 4	683	(1)
South Bay[8]	362	(25) 23	335	(24) 21	322	(24) 20	291	(27) 18	183	(25) 11	8992	(16)
Harbor	31	(2) 15	22	(2) 11	24	(2) 11	17	(2) 8	<5	(-) -	532	(1)
Inglewood	56	(4) 13	50	(4) 12	51	(4) 12	46	(4) 11	27	(4) 6	1654	(3)
Long Beach	245	(17) 51	235	(17) 48	227	(17) 46	203	(19) 41	141	(19) 29	5803	(11)
Torrance	30	(2) 7	28	(2) 6	20	(1) 4	25	(2) 5	11	(2) 2	1003	(2)
Total (4)	1477	(100) 15	1381	(100) 14	1339	(100) 13	1069	(100) 10	733	(100) 7	54796	(100)

1. Rates are based on population estimates from 2004-2007. Rates for 2008 are calculated using population estimates for 2007. Rates based on observations fewer than 20 may not be reliable (see Technical Notes, page 32).
2. Data are provisional due to reporting delay. 3. Cumulative total includes persons diagnosed since 1982.
4. Total includes persons with no information on Service Planning Area/Health District.

TABLE 14. ANNUAL CASES OF AIDS AND RATES PER 100,000 (1) BY CITY/AREA (2) OF RESIDENCE, AND YEAR OF DIAGNOSIS
TOP 35 CITIES (3) RANKED BY 2007 RATE, REPORTED BY DECEMBER 31, 2008
LOS ANGELES COUNTY

City/Area	Year of Diagnosis					Cumulative 1982-2008 No.
	2003 No. (Rate)	2004 No. (Rate)	2005 No. (Rate)	2006 (4) No. (Rate)	2007 (4) No. (Rate)	
Wholesale	54 (94.9)	32 (55.1)	52 (88.6)	55 (92.8)	48 (80.6)	1349
West Hollywood	84 (224.0)	45 (119.2)	38 (100.7)	38 (101.6)	24 (64.1)	3075
Downtown	18 (81.2)	18 (79.9)	8 (35.3)	10 (43.9)	10 (43.7)	403
Los Feliz	19 (43.7)	13 (29.8)	19 (43.3)	14 (31.8)	16 (36.2)	1247
Siylke-chinatn	49 (58.9)	36 (42.7)	30 (35.3)	26 (30.3)	29 (34.1)	1853
Hollywood	144 (59.5)	107 (43.8)	103 (41.8)	113 (45.6)	80 (32.4)	6412
Long Beach	202 (41.7)	227 (46.3)	213 (43.3)	181 (36.7)	158 (31.9)	5541
Crenshaw	23 (32.2)	18 (24.8)	14 (19.3)	17 (23.4)	15 (20.5)	671
Pac Palisades	<5 (-)	<5 (-)	<5 (-)	<5 (-)	5 (18.5)	70
Venice	10 (26.2)	10 (26.2)	7 (18.3)	<5 (-)	7 (18.1)	424
Vermont Square	12 (16.1)	12 (15.9)	19 (25.0)	17 (22.2)	14 (18.1)	481
Studio City	13 (25.0)	8 (15.4)	<5 (-)	7 (13.5)	9 (17.1)	777
Miracle Mile S	17 (34.6)	11 (22.3)	11 (22.3)	14 (28.4)	8 (16.1)	643
Inglewood	10 (8.5)	20 (17.0)	11 (9.3)	16 (13.5)	19 (16.0)	594
Westmont-w Aths	5 (13.2)	8 (20.6)	10 (25.5)	5 (12.6)	6 (15.2)	193
Lawndale	<5 (-)	<5 (-)	5 (15.0)	6 (18.0)	5 (14.9)	121
San Pedro	13 (17.0)	21 (27.4)	16 (20.8)	16 (20.8)	11 (14.1)	275
Boyle Heights	13 (13.8)	17 (17.5)	19 (19.2)	18 (17.9)	14 (13.9)	505
Adams-la Brea	15 (26.4)	17 (29.6)	8 (13.8)	11 (18.9)	8 (13.6)	451
Green Meadows	7 (11.8)	10 (16.6)	12 (19.7)	9 (14.6)	8 (13.1)	321
Wilshir Ctr S	29 (30.1)	18 (18.4)	14 (14.1)	11 (10.9)	13 (13.0)	660
Eagle Rk-glasl	19 (25.4)	9 (11.9)	7 (9.2)	11 (14.3)	10 (12.8)	639
Santa Monica	17 (18.9)	6 (6.6)	10 (11.0)	8 (8.8)	11 (12.1)	571
S Vermont	22 (20.4)	19 (17.4)	26 (23.6)	21 (19.0)	13 (11.6)	656
Wilshir Ctr N	18 (21.8)	17 (20.2)	16 (18.7)	12 (13.9)	10 (11.6)	774
Compton	10 (10.8)	11 (11.8)	10 (10.6)	9 (9.5)	11 (11.6)	338
N Hollywood	29 (22.2)	26 (19.7)	30 (22.5)	24 (17.9)	15 (11.3)	1351
Westlake	34 (26.6)	28 (21.4)	18 (13.5)	30 (22.2)	15 (11.1)	1051
Mar Vista	6 (9.0)	7 (10.5)	7 (10.4)	8 (11.9)	7 (10.3)	249
Palms	14 (23.3)	7 (11.6)	7 (11.5)	<5 (-)	6 (9.7)	287
Sun Valley	12 (15.0)	7 (8.6)	<5 (-)	10 (12.0)	8 (9.7)	274
W Adms-expo Pk	29 (22.1)	22 (16.6)	24 (17.9)	28 (20.8)	13 (9.5)	866
Reseda	11 (10.8)	<5 (-)	5 (4.8)	6 (5.8)	10 (9.4)	320
Lynwood	12 (16.3)	<5 (-)	<5 (-)	<5 (-)	6 (8.1)	185
Gardena	<5 (-)	7 (11.4)	6 (9.8)	7 (11.3)	5 (8.0)	176

1. Rates are based on population estimates for 2003-2007. Rates for 2008 are calculated using population estimates for 2007. Rates based on observations fewer than 20 may not be reliable (see Technical Notes, page 32).
2. The city of Los Angeles is broken down into "areas" or geographic units with more than 15,000 residents. Cities and areas are approximately defined by aggregating the associated census tracts based on the location of their centroid.
3. Includes cities and areas that had more than 15,000 residents and at least 5 persons diagnosed with AIDS in 2007.
4. Data are provisional due to reporting delay.

TABLE 15. REPORTED NUMBERS AND RATES PER 100,000 (1) FOR PERSONS DIAGNOSED WITH AIDS AND PERSONS LIVING WITH AIDS AS OF DECEMBER 31, 2008
BY GENDER, AGE, RACE/ETHNICITY AND EXPOSURE CATEGORY, REPORTED BY DECEMBER 31, 2008, LOS ANGELES COUNTY

	Male						Female						Total					
	Year 2007(2)		Living(2)		Cumulative(3)		Year 2007(2)		Living(2)		Cumulative(3)		Year 2007(2)		Living(2)		Cumulative(3)	
	No. (%)	Rate	No. (%)	Rate	No. (%)	No. (%)	Rate	No. (%)	Rate	No. (%)	No. (%)	Rate	No. (%)	Rate	No. (%)	Rate	No. (%)	
AGE GROUP (4)																		
<13	<5 (-)	-	11 (<1)	1	138 (<1)	<5 (-)	-	7 (<1)	1	113 (2)	<5 (-)	-	18 (<1)	1	251 (<1)			
13-19	7 (1)	1	30 (<1)	5	223 (<1)	<5 (-)	-	20 (1)	4	71 (2)	7 (1)	1	50 (<1)	5	294 (1)			
20-29	156 (17)	21	655 (3)	87	7997 (16)	31 (22)	4	130 (5)	18	965 (21)	187 (17)	13	785 (3)	54	8962 (16)			
30-39	314 (34)	39	3461 (16)	434	21975 (44)	37 (26)	5	578 (22)	75	1690 (36)	351 (33)	22	4039 (17)	257	23665 (43)			
40-49	319 (34)	41	9281 (44)	1195	13531 (27)	45 (31)	6	1028 (39)	133	1130 (24)	364 (34)	24	10309 (44)	666	14661 (27)			
50-59	99 (11)	17	5669 (27)	979	4715 (9)	25 (17)	4	596 (23)	96	502 (11)	124 (12)	10	6265 (26)	522	5217 (10)			
60+	30 (3)	5	1942 (9)	305	1510 (3)	6 (4)	1	271 (10)	32	236 (5)	36 (3)	2	2213 (9)	150	1746 (3)			
RACE/ETHNICITY (5)																		
White	277 (30)	18	7932 (38)	513	23699 (47)	24 (17)	2	454 (17)	29	994 (21)	301 (28)	10	8386 (35)	270	24693 (45)			
Black	195 (21)	44	3966 (19)	904	9440 (19)	58 (40)	12	947 (36)	188	1775 (38)	253 (24)	27	4913 (21)	521	11215 (20)			
Hispanic	410 (44)	17	8341 (40)	339	15458 (31)	56 (39)	2	1137 (43)	47	1784 (38)	466 (44)	10	9478 (40)	194	17242 (31)			
Asian	36 (4)	6	660 (3)	101	1194 (2)	<5 (-)	-	63 (2)	9	113 (2)	40 (4)	3	723 (3)	53	1307 (2)			
AI/AN	5 (1)	34	87 (<1)	583	195 (<1)	<5 (-)	-	22 (1)	139	30 (1)	6 (1)	20	109 (<1)	355	225 (<1)			
EXPOSURE CATEGORY (6)																		
MSM	614 (66)		15304 (73)		37614 (75)	- (-)		- (-)		- (-)	614 (57)		15304 (65)		37614 (69)			
IDU	24 (3)		873 (4)		2578 (5)	11 (8)		484 (18)		1064 (23)	35 (3)		1357 (6)		3642 (7)			
MSM/IDU	72 (8)		1553 (7)		3777 (8)	- (-)		- (-)		- (-)	72 (7)		1553 (7)		3777 (7)			
Hemophi/Transfusion	<5 (-)		110 (1)		531 (1)	<5 (-)		85 (3)		301 (6)	7 (1)		195 (1)		832 (2)			
Heterosexual contact	17 (2)		520 (2)		893 (2)	62 (43)		1271 (48)		2068 (44)	79 (7)		1791 (8)		2961 (5)			
Mother w/at HIV risk	<5 (-)		52 (<1)		102 (<1)	<5 (-)		40 (2)		103 (2)	<5 (-)		92 (<1)		205 (<1)			
Other/Undetermined	193 (21)		2637 (13)		4594 (9)	66 (46)		750 (29)		1171 (25)	259 (24)		3387 (14)		5765 (11)			
Total (7)	925 [87]	18	21049 [89]	411	50089 [91]	144 [13]	3	2630 [11]	50	4707 [9]	1069 [100]	10	23679 [100]	229	54796 [100]			

1. Rates for 2008 are calculated using population estimates for 2007. Rates based on observations fewer than 20 may not be reliable (see Technical Notes, page 32).
2. Data are provisional due to reporting delay. 3. Include persons reported as of December 31, 2008.
4. Age distributions for year 2008 and cumulative cases are based on age at the time of AIDS diagnosis while the age distribution for persons living with AIDS is based on age as of December 31, 2008.
5. Does not include persons who have multiple races/ethnicities or have missing information on race/ethnicity.
6. Rate for exposure category is not available, because denominator can only be estimated. 7. Percent of total cases that are male and female is shown in this row.

TABLE 16. CUMULATIVE NUMBER OF PERSONS DIAGNOSED WITH AIDS BY GENDER, AGE, RACE/ETHNICITY, AND EXPOSURE CATEGORY FOR EACH SERVICE PLANNING AREA (SPA)
 REPORTED BY DECEMBER 31, 2008, LOS ANGELES COUNTY, 1982-2008

Service Planning Area	Antelope Valley No. (%)	San Fernando No. (%)	San Gabriel No. (%)	Metro No. (%)	West No. (%)	South No. (%)	East No. (%)	South Bay/LB No. (%)	Total (1) No. (%)
GENDER									
Male	469 (84)	7200 (92)	3542 (88)	20237 (95)	2994 (94)	4564 (82)	2850 (88)	8078 (90)	50089 (91)
Female	87 (16)	585 (8)	498 (12)	1045 (5)	196 (6)	979 (18)	395 (12)	914 (10)	4707 (9)
AGE GROUP (2)									
<13	7 (1)	34 (<1)	32 (1)	54 (<1)	10 (<1)	45 (1)	28 (1)	40 (<1)	251 (<1)
13-19	6 (1)	30 (<1)	31 (1)	76 (<1)	7 (<1)	58 (1)	29 (1)	56 (1)	294 (1)
20-29	94 (17)	1134 (15)	719 (18)	3296 (15)	438 (14)	1103 (20)	654 (20)	1486 (17)	8962 (16)
30-39	215 (39)	3299 (42)	1682 (42)	9491 (45)	1432 (45)	2181 (39)	1356 (42)	3935 (44)	23665 (43)
40-49	153 (28)	2168 (28)	1011 (25)	5856 (28)	862 (27)	1419 (26)	754 (23)	2404 (27)	14661 (27)
50-59	57 (10)	842 (11)	387 (10)	1952 (9)	308 (10)	533 (10)	294 (9)	834 (9)	5217 (10)
60+	24 (4)	278 (4)	178 (4)	557 (3)	133 (4)	204 (4)	130 (4)	237 (3)	1746 (3)
RACE/ETHNICITY (3)									
White	277 (50)	4669 (60)	1400 (35)	10853 (51)	2115 (66)	285 (5)	691 (21)	4310 (48)	24693 (45)
Black	145 (26)	721 (9)	672 (17)	3325 (16)	450 (14)	3500 (63)	194 (6)	2176 (24)	11215 (20)
Hispanic	123 (22)	2157 (28)	1738 (43)	6471 (30)	533 (17)	1716 (31)	2274 (70)	2197 (24)	17242 (31)
Asian	8 (1)	189 (2)	204 (5)	485 (2)	70 (2)	24 (<1)	67 (2)	258 (3)	1307 (2)
AI/AN	<5 (-)	29 (<1)	15 (<1)	97 (<1)	15 (<1)	13 (<1)	17 (1)	36 (<1)	225 (<1)
EXPOSURE CATEGORY									
MSM	258 (46)	5475 (70)	2434 (60)	16137 (76)	2412 (76)	2770 (50)	1912 (59)	6117 (68)	37614 (69)
IDU	81 (15)	474 (6)	361 (9)	926 (4)	157 (5)	600 (11)	264 (8)	763 (8)	3642 (7)
MSM/IDU	49 (9)	449 (6)	237 (6)	1599 (8)	177 (6)	349 (6)	182 (6)	710 (8)	3777 (7)
Hemophi/Transfusion	20 (4)	152 (2)	105 (3)	151 (1)	62 (2)	109 (2)	96 (3)	133 (1)	832 (2)
Heterosexual contact	57 (10)	381 (5)	308 (8)	594 (3)	123 (4)	588 (11)	252 (8)	653 (7)	2961 (5)
Mother w/at HIV risk	<5 (-)	22 (<1)	26 (1)	47 (<1)	9 (<1)	42 (1)	21 (1)	35 (<1)	205 (<1)
Other/Undetermined	88 (16)	832 (11)	569 (14)	1828 (9)	250 (8)	1085 (20)	518 (16)	581 (6)	5765 (11)
Total [% of total]	556 [1]	7785 [14]	4040 [7]	21282 [39]	3190 [6]	5543 [10]	3245 [6]	8992 [16]	54796 [100]

1. Total includes persons with no information on SPA.
2. Age at time of diagnosis.
3. Does not include cases who have multiple races/ethnicities or have missing information on race/ethnicity.

TABLE 17. NUMBER OF PERSONS DIAGNOSED WITH AIDS (1) AND RATE PER 100,000 (1, 2) IN YEAR 2007
 BY GENDER, AGE, RACE/ETHNICITY, AND EXPOSURE CATEGORY FOR EACH SERVICE PLANNING AREA (SPA)
 REPORTED BY DECEMBER 31, 2008, LOS ANGELES COUNTY

Service Planning Area	Antelope Valley No. (%) Rate	San Fernando No. (%) Rate	San Gabriel No. (%) Rate	Metro No. (%) Rate	West No. (%) Rate	South No. (%) Rate	East No. (%) Rate	South Bay/LB No. (%) Rate	Total (3) No. (%) Rate
GENDER									
Male	14 (82) 8	110 (87) 10	60 (90) 7	297 (91) 46	50 (88) 16	100 (78) 20	48 (84) 7	246 (85) 31	925 (87) 18
Female	<5 (-) -	17 (13) 2	7 (10) 1	28 (9) 5	7 (12) 2	28 (22) 5	9 (16) 1	45 (15) 5	144 (13) 3
AGE GROUP									
<30	<5 (-) -	20 (16) 2	11 (16) 1	50 (15) 10	5 (9) 2	28 (22) 5	12 (21) 2	64 (22) 9	194 (18) 4
30-39	5 (29) 13	46 (36) 15	13 (19) 5	115 (35) 48	26 (46) 22	45 (35) 30	16 (28) 8	85 (29) 36	351 (33) 22
40-49	6 (35) 11	38 (30) 11	30 (45) 11	112 (34) 56	21 (37) 19	38 (30) 29	20 (35) 11	99 (34) 40	364 (34) 24
50+	<5 (-) -	23 (18) 4	13 (19) 2	48 (15) 15	5 (9) 2	17 (13) 9	9 (16) 3	43 (15) 10	160 (15) 6
RACE/ETHNICITY (4)									
White	<5 (-) -	42 (33) 4	19 (28) 4	97 (30) 37	34 (60) 8	<5 (-) -	6 (11) 2	98 (34) 19	301 (28) 10
Black	8 (47) 16	21 (17) 28	11 (16) 13	58 (18) 82	12 (21) 29	67 (52) 20	<5 (-) -	73 (25) 30	253 (24) 27
Hispanic	6 (35) 5	52 (41) 6	32 (48) 4	158 (49) 22	7 (12) 6	59 (46) 9	48 (84) 5	104 (36) 17	466 (44) 10
Other (5)	<5 (-) -	11 (9) 5	5 (7) 1	11 (3) 5	<5 (-) -	<5 (-) -	<5 (-) -	15 (5) 6	46 (4) 3
EXPOSURE CATEGORY (6)									
MSM	5 (29)	61 (48)	27 (40)	199 (61)	34 (60)	56 (44)	29 (51)	203 (70)	614 (57)
IDU	<5 (-)	6 (5)	<5 (-)	6 (2)	<5 (-)	<5 (-)	<5 (-)	10 (3)	35 (3)
MSM/IDU	<5 (-)	15 (12)	<5 (-)	30 (9)	<5 (-)	<5 (-)	<5 (-)	14 (5)	72 (7)
Hemophi/Transfusion	<5 (-)	<5 (-)	<5 (-)	<5 (-)	<5 (-)	<5 (-)	<5 (-)	<5 (-)	7 (1)
Heterosexual contact	7 (41)	11 (9)	<5 (-)	9 (3)	<5 (-)	16 (13)	<5 (-)	30 (10)	79 (7)
Mother w/at HIV risk	<5 (-)	<5 (-)	<5 (-)	<5 (-)	<5 (-)	<5 (-)	<5 (-)	<5 (-)	<5 (-)
Other/Undetermined	<5 (-)	33 (26)	30 (45)	78 (24)	17 (30)	47 (37)	19 (33)	32 (11)	259 (24)
Total [% of total]	17 [2] 5	127 [12] 6	67 [6] 4	325 [30] 26	57 [5] 9	128 [12] 12	57 [5] 4	291 [27] 18	1069 [100] 10

1. Data are provisional due to reporting delay.
2. Rates based on observations fewer than 20 may not be reliable. Rates are based on population estimates for 2007 (see Technical Notes, page 32).
3. Total includes persons with no information on SPA.
4. Does not include persons who have multiple races/ethnicities or have missing information on race/ethnicity.
5. Other includes Asian, Pacific Islander, American Indian and Alaskan Native.
6. Rate for exposure category is not available, because denominator can only be estimated.

TABLE 18. PERSONS LIVING WITH AIDS AND RATE PER 100,000 (1) AT THE END OF CALENDAR YEAR, BY GENDER, AGE, RACE/ETHNICITY, AND EXPOSURE CATEGORY REPORTED BY DECEMBER 31, 2008, LOS ANGELES COUNTY

Calendar Year	2001			2002			2003			2004			2005			2006 (2)			2007 (2)			2008 (2)		
	No.	(%)	Rate	No.	(%)	Rate	No.	(%)	Rate	No.	(%)	Rate	No.	(%)	Rate	No.	(%)	Rate	No.	(%)	Rate	No.	(%)	Rate
GENDER																								
Male	15716	(89)	326	16779	(89)	343	17719	(89)	357	18440	(89)	368	19146	(89)	379	19897	(89)	391	20550	(89)	402	21049	(89)	411
Female	1860	(11)	38	2004	(11)	40	2124	(11)	42	2224	(11)	43	2329	(11)	45	2443	(11)	47	2552	(11)	49	2630	(11)	50
AGE GROUP (3)																								
<13	43	(<1)	2	45	(<1)	2	42	(<1)	2	40	(<1)	2	36	(<1)	2	28	(<1)	1	20	(<1)	1	18	(<1)	1
13-19	72	(<1)	7	64	(<1)	6	66	(<1)	6	64	(<1)	6	54	(<1)	5	63	(<1)	6	58	(<1)	5	50	(<1)	5
20-29	878	(5)	60	870	(5)	59	880	(4)	60	829	(4)	57	861	(4)	60	870	(4)	61	867	(4)	59	785	(3)	54
30-39	6191	(35)	381	6096	(32)	372	5913	(30)	361	5573	(27)	342	5167	(24)	320	4815	(22)	302	4465	(19)	285	4039	(17)	257
40-49	6925	(39)	493	7670	(41)	531	8379	(42)	566	8963	(43)	592	9493	(44)	619	9904	(44)	641	10170	(44)	657	10309	(44)	666
50-59	2701	(15)	280	3118	(17)	309	3500	(18)	334	3960	(19)	363	4473	(21)	394	5056	(23)	431	5616	(24)	468	6265	(26)	522
60+	766	(4)	61	920	(5)	71	1063	(5)	80	1235	(6)	90	1391	(6)	99	1604	(7)	112	1906	(8)	130	2213	(9)	150
RACE/ETHNICITY (4)																								
White	6665	(38)	213	7042	(37)	225	7394	(37)	236	7607	(37)	243	7791	(36)	250	8009	(36)	259	8218	(36)	264	8386	(35)	270
Black	3724	(21)	393	3950	(21)	415	4101	(21)	432	4240	(21)	447	4435	(21)	471	4621	(21)	495	4784	(21)	507	4913	(21)	521
Hispanic	6596	(38)	150	7143	(38)	158	7652	(39)	166	8074	(39)	172	8458	(39)	177	8874	(40)	182	9228	(40)	189	9478	(40)	194
Asian	447	(3)	36	495	(3)	39	540	(3)	41	581	(3)	44	627	(3)	47	666	(3)	49	696	(3)	51	723	(3)	53
AI/AN	87	(<1)	307	93	(<1)	320	97	(<1)	327	100	(<1)	331	99	(<1)	323	103	(<1)	332	108	(<1)	352	109	(<1)	355
EXPOSURE CATEGORY (5)																								
MSM	11571	(66)		12307	(66)		13003	(66)		13511	(65)		14010	(65)		14535	(65)		14985	(65)		15304	(65)	
IDU	1220	(7)		1272	(7)		1288	(6)		1304	(6)		1325	(6)		1335	(6)		1344	(6)		1357	(6)	
MSM/IDU	1280	(7)		1358	(7)		1403	(7)		1427	(7)		1445	(7)		1486	(7)		1534	(7)		1553	(7)	
Hemophi/Transfusion	192	(1)		195	(1)		195	(1)		196	(1)		194	(1)		192	(1)		196	(1)		195	(1)	
Heterosexual contact	1326	(8)		1426	(8)		1544	(8)		1590	(8)		1654	(8)		1714	(8)		1770	(8)		1791	(8)	
Mother w/at HIV risk	72	(<1)		76	(<1)		79	(<1)		81	(<1)		83	(<1)		88	(<1)		91	(<1)		92	(<1)	
Other/Undetermined	1915	(11)		2149	(11)		2331	(12)		2555	(12)		2764	(13)		2990	(13)		3182	(14)		3387	(14)	
Total																								
	17576	(100)	180	18783	(100)	190	19843	(100)	198	20664	(100)	204	21475	(100)	210	22340	(100)	217	23102	(100)	224	23679	(100)	229

1. Rates that are based on observations fewer than 20 may not be reliable (see Technical Notes, page 32).
2. Data are provisional due to reporting delay. Rates for 2008 are calculated using population estimates for 2007.
3. Age as of the end of year.
4. Does not include persons of multiple races/ethnicities or unknown race/ethnicity.
5. Rate for exposure category is not available, because denominator can only be estimated.

TABLE 19. PERSONS LIVING WITH AIDS AND RATE PER 100,000 (1) AS OF DECEMBER 31, 2008
 BY SERVICE PLANNING AREA, GENDER, AGE, RACE/ETHNICITY, AND EXPOSURE CATEGORY
 REPORTED BY DECEMBER 31, 2008, LOS ANGELES COUNTY

Service Planning Area	Antelope Valley No. (%) Rate	San Fernando No. (%) Rate	San Gabriel No. (%) Rate	Metro No. (%) Rate	West No. (%) Rate	South No. (%) Rate	East No. (%) Rate	South Bay/LB No. (%) Rate	Total (2) No. (%) Rate
GENDER									
Male	230 (83) 128	2806 (89) 261	1385 (84) 151	8261 (93) 1275	1192 (92) 384	1904 (79) 373	1314 (85) 192	3913 (87) 494	21049 (89) 411
Female	48 (17) 27	330 (11) 30	259 (16) 27	583 (7) 95	103 (8) 31	509 (21) 95	225 (15) 32	570 (13) 69	2630 (11) 50
AGE GROUP									
<13	<5 (-) -	<5 (-) -	<5 (-) -	<5 (-) -	<5 (-) -	<5 (-) -	<5 (-) -	5 (<1) 2	18 (<1) 1
13-19	<5 (-) -	<5 (-) -	<5 (-) -	11 (<1) 10	<5 (-) -	12 (<1) 9	6 (<1) 4	12 (<1) 7	50 (<1) 5
20-29	9 (3) 15	97 (3) 33	63 (4) 23	204 (2) 124	33 (3) 45	129 (5) 75	66 (4) 31	182 (4) 86	785 (3) 54
30-39	39 (14) 101	495 (16) 156	306 (19) 117	1395 (16) 577	171 (13) 142	483 (20) 324	313 (20) 155	834 (19) 349	4039 (17) 257
40-49	122 (44) 220	1344 (43) 390	703 (43) 258	3937 (45) 1963	544 (42) 495	1001 (41) 775	660 (43) 356	1983 (44) 794	10309 (44) 666
50-59	73 (26) 169	869 (28) 317	401 (24) 172	2477 (28) 1799	398 (31) 454	575 (24) 637	341 (22) 238	1111 (25) 579	6265 (26) 522
60+	34 (12) 81	325 (10) 102	166 (10) 57	816 (9) 472	147 (11) 126	210 (9) 197	152 (10) 82	356 (8) 151	2213 (9) 150
RACE/ETHNICITY (3)									
White	107 (38) 62	1422 (45) 140	378 (23) 80	3563 (40) 1352	759 (59) 188	97 (4) 399	227 (15) 92	1809 (40) 356	8386 (35) 270
Black	89 (32) 183	352 (11) 470	262 (16) 309	1504 (17) 2125	199 (15) 478	1256 (52) 371	107 (7) 292	1135 (25) 460	4913 (21) 521
Hispanic	76 (27) 63	1221 (39) 147	868 (53) 102	3458 (39) 484	285 (22) 253	1043 (43) 157	1156 (75) 119	1359 (30) 224	9478 (40) 194
Asian	5 (2) 38	113 (4) 50	121 (7) 26	242 (3) 115	40 (3) 49	7 (<1) 40	40 (3) 33	154 (3) 63	723 (3) 53
AI/AN	<5 (-) -	16 (1) 241	9 (1) 179	45 (1) 1149	8 (1) 538	7 (<1) 400	7 (<1) 170	16 (<1) 300	109 (<1) 355
EXPOSURE CATEGORY (4)									
MSM	128 (46)	2005 (64)	916 (56)	6293 (71)	921 (71)	1128 (47)	895 (58)	2990 (67)	15304 (65)
IDU	30 (11)	177 (6)	129 (8)	328 (4)	62 (5)	194 (8)	97 (6)	333 (7)	1357 (6)
MSM/IDU	29 (10)	189 (6)	85 (5)	626 (7)	73 (6)	122 (5)	82 (5)	341 (8)	1553 (7)
Hemophi/Transfusion	<5 (-)	34 (1)	26 (2)	42 (<1)	15 (1)	28 (1)	19 (1)	29 (1)	195 (1)
Heterosexual contact	34 (12)	231 (7)	174 (11)	359 (4)	70 (5)	328 (14)	152 (10)	441 (10)	1791 (8)
Mother w/at HIV risk	<5 (-)	7 (<1)	8 (<1)	23 (<1)	<5 (-)	22 (1)	10 (1)	17 (<1)	92 (<1)
Other/Undetermined	54 (19)	493 (16)	306 (19)	1173 (13)	150 (12)	591 (24)	284 (18)	332 (7)	3387 (14)
Total [% of total]	278 [1] 78	3136 [13] 145	1644 [7] 88	8844 [37] 701	1295 [5] 202	2413 [10] 231	1539 [6] 112	4483 [19] 278	23679 [100] 229

1. Rates that are based on observations fewer than 20 may not be reliable. Rates are based on year 2007 population estimates (see Technical Notes, page 32).
2. Total includes persons with no information on SPA.
3. Does not include cases who have multiple races/ethnicities or have missing information on race/ethnicity.
4. Rate for exposure category is not available, because denominator can only be estimated.

TABLE 20. RACIAL/ETHNIC- AND GENDER- SPECIFIC NUMBERS AND PERCENTAGE FOR PERSONS LIVING WITH AIDS AS OF DECEMBER 31, 2008(1)
 BY AGE, EXPOSURE CATEGORY, AND SERVICE PLANNING AREA
 REPORTED BY DECEMBER 31, 2008, LOS ANGELES COUNTY

	White			Black			Hispanic			Other (2)			Total (3)		
	Male	Female	All	Male	Female	All	Male	Female	All	Male	Female	All	Male	Female	All
	No. (%)	No. (%)	No. (%)	No. (%)	No. (%)	No. (%)	No. (%)	No. (%)	No. (%)	No. (%)	No. (%)	No. (%)	No. (%)	No. (%)	No. (%)
AGE GROUP (4)															
<13	<5 (-)	<5 (-)	<5 (-)	6 (<1)	<5 (-)	8(<1)	<5 (-)	<5 (-)	7(<1)	<5 (-)	<5 (-)	<5 (-)	11(<1)	7(<1)	18(<1)
13- 19	<5 (-)	<5 (-)	<5 (-)	8 (<1)	6 (1)	14(<1)	17 (<1)	13(1)	30(<1)	<5 (-)	<5 (-)	<5 (-)	30(<1)	20(1)	50(<1)
20- 29	86 (1)	14(3)	100(1)	136 (3)	46(5)	182(4)	407 (5)	64(6)	471(5)	24 (3)	6(7)	30(4)	655(3)	130(5)	785(3)
30- 39	779 (10)	70(15)	849(10)	558 (14)	202(21)	760(15)	1953 (23)	287(25)	2240(24)	163 (22)	18(21)	181(22)	3461(16)	578(22)	4039(17)
40- 49	3445 (43)	184(41)	3629(43)	1737 (44)	385(41)	2122(43)	3780 (45)	429(38)	4209(44)	294 (39)	27(32)	321(39)	9281(44)	1028(39)	10309(44)
50- 59	2628 (33)	122(27)	2750(33)	1181 (30)	236(25)	1417(29)	1636 (20)	215(19)	1851(20)	203 (27)	20(24)	223(27)	5669(27)	596(23)	6265(26)
60+	991 (12)	62(14)	1053(13)	340 (9)	70(7)	410(8)	545 (7)	125(11)	670(7)	59 (8)	14(16)	73(9)	1942(9)	271(10)	2213(9)
EXPOSURE CATEGORY															
MSM	6473 (82)	- (-)	6473(77)	2472 (62)	- (-)	2472(50)	5752 (69)	- (-)	5752(61)	558 (75)	- (-)	558(67)	15304(73)	- (-)	15304(65)
IDU	257 (3)	156(34)	413(5)	276 (7)	199(21)	475(10)	321 (4)	114(10)	435(5)	17 (2)	12(14)	29(3)	873(4)	484(18)	1357(6)
MSM/IDU	702 (9)	- (-)	702(8)	366 (9)	- (-)	366(7)	443 (5)	- (-)	443(5)	36 (5)	- (-)	36(4)	1553(7)	- (-)	1553(7)
Hemophi /Transfusi on	37 (<1)	12(3)	49(1)	14 (<1)	28(3)	42(1)	50 (1)	40(4)	90(1)	9 (1)	<5(-)	13(2)	110(1)	85(3)	195(1)
Heterosexual contact	57 (1)	193(43)	250(3)	137 (3)	416(44)	553(11)	311 (4)	618(54)	929(10)	15 (2)	41(48)	56(7)	520(2)	1271(48)	1791(8)
Mother w/at HIV risk	<5 (-)	<5(-)	6(<1)	20 (1)	13(1)	33(1)	24 (<1)	24(2)	48(1)	<5 (-)	<5(-)	5(1)	52(<1)	40(2)	92(<1)
Other/Undetermi ned	402 (5)	91(20)	493(6)	681 (17)	291(31)	972(20)	1440 (17)	341(30)	1781(19)	108 (14)	27(32)	135(16)	2637(13)	750(29)	3387(14)
SERVICE PLANNING AREA															
Antelope Valley[1]	94 (1)	13(3)	107(1)	67 (2)	22(2)	89(2)	65 (1)	11(1)	76(1)	<5 (-)	<5(-)	6(1)	230(1)	48(2)	278(1)
San Fernando[2]	1308 (17)	114(25)	1422(17)	282 (7)	70(7)	352(7)	1085 (13)	136(12)	1221(13)	119 (16)	10(12)	129(16)	2806(13)	330(13)	3136(13)
San Gabriel [3]	328 (4)	50(11)	378(5)	196 (5)	66(7)	262(5)	741 (9)	127(11)	868(9)	115 (15)	15(18)	130(16)	1385(7)	259(10)	1644(7)
Metro[4]	3469 (44)	94(21)	3563(43)	1331 (34)	173(18)	1504(31)	3164 (38)	294(26)	3458(37)	266 (36)	21(25)	287(35)	8261(39)	583(22)	8844(37)
West[5]	718 (9)	41(9)	759(9)	167 (4)	32(3)	199(4)	260 (3)	25(2)	285(3)	43 (6)	5(6)	48(6)	1192(6)	103(4)	1295(5)
South[6]	78 (1)	19(4)	97(1)	960 (24)	296(31)	1256(26)	856 (10)	187(16)	1043(11)	9 (1)	5(6)	14(2)	1904(9)	509(19)	2413(10)
East[7]	207 (3)	20(4)	227(3)	84 (2)	23(2)	107(2)	982 (12)	174(15)	1156(12)	40 (5)	7(8)	47(6)	1314(6)	225(9)	1539(7)
South Bay/LB[8]	1708 (22)	101(22)	1809(22)	870 (22)	265(28)	1135(23)	1177 (14)	182(16)	1359(14)	150 (20)	20(24)	170(20)	3913(19)	570(22)	4483(19)
Total (5)	7932 [95]	454[5]	8386[100]	3966 [81]	947[19]	4913[100]	8341 [88]	1137[12]	9478[100]	747 [90]	85[10]	832[100]	21049[89]	2630[11]	23679[100]

1. Data are provisional due to reporting delay.
2. Other includes Asian, Pacific Islander, American Indian and Alaskan Native.
3. Total includes persons who have multiple races/ethnicities or have missing information on race/ethnicity or SPA.
4. Age as of December 31, 2008.
5. Percent of total cases that are male and female is shown in this row.

TABLE 21. ANNUAL ADULT/ADOLESCENT CASES OF AIDS AND RATES PER 100,000 (1)
 BY GENDER, YEAR OF DIAGNOSIS, AND RACE/ETHNICITY
 REPORTED BY DECEMBER 31, 2008
 LOS ANGELES COUNTY

Year of Diagnosis	Race/Ethnicity					Total (2) No. (Rate)
	White No. (Rate)	Black No. (Rate)	Hispanic No. (Rate)	Asian No. (Rate)	AI/AN No. (Rate)	
MALE						
1999	507 (38)	357 (107)	672 (44)	56 (12)	6 (58)	1605 (44)
2000	506 (38)	335 (100)	659 (42)	31 (6)	8 (73)	1540 (41)
2001	465 (35)	326 (96)	625 (39)	43 (9)	9 (80)	1474 (39)
2002	541 (40)	321 (94)	676 (41)	55 (11)	8 (69)	1605 (42)
2003	544 (40)	256 (74)	626 (37)	54 (10)	7 (58)	1490 (38)
2004	405 (30)	237 (69)	586 (34)	51 (10)	6 (49)	1290 (32)
2005	364 (27)	262 (76)	522 (29)	47 (9)	<5 (-)	1201 (30)
2006 (3)	379 (28)	234 (68)	492 (27)	48 (9)	<5 (-)	1161 (29)
2007 (3)	277 (21)	195 (56)	410 (22)	36 (6)	5 (39)	925 (23)
2008 (3)	196 (15)	136 (39)	264 (14)	33 (6)	<5 (-)	635 (15)
Cumulative Male subtotal (4)	23674	9389	15400	1191	194	49951
FEMALE						
1999	35 (3)	96 (24)	79 (5)	6 (1)	<5 (-)	216 (6)
2000	45 (3)	83 (21)	100 (6)	<5 (-)	<5 (-)	233 (6)
2001	35 (3)	80 (20)	106 (7)	9 (2)	<5 (-)	232 (6)
2002	39 (3)	78 (19)	105 (6)	8 (1)	<5 (-)	232 (6)
2003	28 (2)	74 (18)	96 (6)	5 (1)	<5 (-)	204 (5)
2004	35 (3)	76 (18)	66 (4)	5 (1)	<5 (-)	185 (4)
2005	27 (2)	77 (19)	67 (4)	6 (1)	<5 (-)	178 (4)
2006 (3)	21 (2)	68 (16)	81 (5)	<5 (-)	<5 (-)	178 (4)
2007 (3)	24 (2)	58 (14)	56 (3)	<5 (-)	<5 (-)	144 (3)
2008 (3)	11 (1)	44 (11)	39 (2)	<5 (-)	<5 (-)	97 (2)
Cumulative Female subtotal (4)	975	1739	1729	110	30	4594
BOTH						
1999	542 (20)	453 (62)	751 (25)	62 (6)	6 (28)	1821 (24)
2000	551 (21)	418 (56)	759 (24)	35 (3)	9 (40)	1773 (23)
2001	500 (18)	406 (54)	731 (23)	52 (5)	11 (48)	1706 (22)
2002	580 (21)	399 (53)	781 (24)	63 (6)	9 (37)	1837 (23)
2003	572 (21)	330 (44)	722 (21)	59 (5)	8 (32)	1694 (21)
2004	440 (16)	313 (41)	652 (19)	56 (5)	8 (31)	1475 (18)
2005	391 (14)	339 (45)	589 (17)	53 (5)	<5 (-)	1379 (17)
2006 (3)	400 (15)	302 (40)	573 (16)	52 (4)	6 (22)	1339 (16)
2007 (3)	301 (11)	253 (33)	466 (13)	40 (3)	6 (23)	1069 (13)
2008 (3)	207 (8)	180 (23)	303 (8)	36 (3)	<5 (-)	732 (9)
Cumulative Total (4)	24649	11128	17129	1301	224	54545

1. Rates are based on population estimates for 1999-2007. Rates for 2008 are calculated using population estimates for 2007. Rates based on observations fewer than 20 may not be reliable (see Technical Notes, page 32).
2. Total includes persons who have multiple races/ethnicities or have missing information on race/ethnicity.
3. Data are provisional due to reporting delay.
4. Includes persons diagnosed since 1982.

TABLE 22. ANNUAL DEATHS AMONG AIDS CASES BY AGE, RACE/ETHNICITY, GENDER, EXPOSURE CATEGORY, AND SERVICE PLANNING AREA
 REPORTED BY DECEMBER 31, 2008
 LOS ANGELES COUNTY

	Year of Death										Cumulative 1982-2008	
	2002		2003		2004		2005 (1)		2006(1)			
	No.	%	No.	%	No.	%	No.	%	No.	%	No.	%
AGE AT DEATH												
<13	<5	(-)	<5	(-)	<5	(-)	<5	(-)	<5	(-)	155	(<1)
13- 19	<5	(-)	<5	(-)	<5	(-)	<5	(-)	<5	(-)	48	(<1)
20- 29	25	(4)	22	(3)	20	(3)	13	(2)	15	(3)	2967	(10)
30- 39	180	(28)	145	(23)	155	(24)	97	(17)	89	(19)	12213	(39)
40- 49	240	(38)	255	(40)	252	(38)	270	(47)	170	(36)	9745	(31)
50- 59	139	(22)	143	(23)	147	(22)	126	(22)	135	(28)	4242	(14)
60+	48	(8)	67	(11)	81	(12)	63	(11)	63	(13)	1747	(6)
RACE/ETHNICITY												
White	203	(32)	221	(35)	227	(35)	208	(36)	182	(38)	16307	(52)
Black	175	(28)	179	(28)	175	(27)	144	(25)	116	(24)	6302	(20)
Hispanic	235	(37)	213	(34)	230	(35)	206	(36)	157	(33)	7764	(25)
Other (2)	18	(3)	18	(3)	21	(3)	11	(2)	15	(3)	700	(2)
MALE EXPOSURE CATEGORY												
MSM	330	(52)	341	(54)	352	(54)	289	(51)	263	(55)	22310	(72)
IDU	56	(9)	46	(7)	54	(8)	42	(7)	30	(6)	1705	(5)
MSM-IDU	38	(6)	61	(10)	54	(8)	55	(10)	39	(8)	2224	(7)
Heterosexual contact	19	(3)	10	(2)	16	(2)	18	(3)	10	(2)	373	(1)
Other/undetermined (3)	101	(16)	92	(14)	95	(14)	91	(16)	68	(14)	2428	(8)
FEMALE EXPOSURE CATEGORY												
IDU	22	(3)	31	(5)	27	(4)	22	(4)	21	(4)	580	(2)
Heterosexual contact	30	(5)	24	(4)	37	(6)	22	(4)	15	(3)	797	(3)
Other/undetermined (3)	37	(6)	30	(5)	21	(3)	31	(5)	28	(6)	700	(2)
SERVICE PLANNING AREA												
Antelope Valley[1]	6	(1)	10	(2)	8	(1)	6	(1)	11	(2)	278	(1)
San Fernando[2]	84	(13)	71	(11)	80	(12)	81	(14)	60	(13)	4649	(15)
San Gabriel [3]	50	(8)	46	(7)	58	(9)	42	(7)	39	(8)	2396	(8)
Metro[4]	221	(35)	228	(36)	223	(34)	200	(35)	173	(36)	12438	(40)
West[5]	29	(5)	28	(4)	29	(4)	30	(5)	22	(5)	1895	(6)
South[6]	90	(14)	108	(17)	100	(15)	64	(11)	59	(12)	3130	(10)
East[7]	44	(7)	48	(8)	47	(7)	32	(6)	26	(5)	1706	(5)
South Bay/LB[8]	109	(17)	96	(15)	111	(17)	115	(20)	84	(18)	4509	(14)
Total (4)	633	(100)	635	(100)	656	(100)	570	(100)	474	(100)	31117	(100)

1. Data are provisional due to reporting delay.
2. Includes Asian, Pacific Islander, American Indian and Alaskan Native.
3. Includes hemophilia or coagulation disorder, transfusion recipient, mother with or at risk for HIV, confirmed other risk and risk not specified.
4. Includes persons of multiple races/ethnicities or unknown race/ethnicity or service planning area.

TABLE 23. PRELIMINARY NUMBER OF PERSONS LIVING WITH NON-AIDS HIV (1) AND RATE PER 100,000 (2) AS OF DECEMBER 31, 2008
BY SERVICE PLANNING AREA (SPA), GENDER, AGE, RACE/ETHNICITY AND EXPOSURE CATEGORY, LOS ANGELES COUNTY

Service Planning Area	Antelope Valley No. (%) Rate	San Fernando No. (%) Rate	San Gabriel No. (%) Rate	Metro No. (%) Rate	West No. (%) Rate	South No. (%) Rate	East No. (%) Rate	South Bay/LB No. (%) Rate	Total (3) No. (%) Rate
GENDER									
Male	149 (71) 83	2112 (87) 197	982 (82) 107	6906 (91) 1066	884 (88) 285	1486 (72) 291	839 (82) 123	2189 (85) 276	15585 (86) 305
Female	60 (29) 34	327 (13) 30	209 (18) 22	655 (9) 107	121 (12) 37	590 (28) 111	185 (18) 27	389 (15) 47	2539 (14) 49
AGE GROUP (4)									
<13	<5 (-) -	<5 (-) -	5 (<1) 1	7 (<1) 3	<5 (-) -	15 (1) 6	<5 (-) -	5 (<1) 2	46 (<1) 2
13-19	<5 (-) -	25 (1) 11	13 (1) 7	51 (1) 44	9 (1) 19	45 (2) 33	14 (1) 9	29 (1) 17	189 (1) 17
20-29	27 (13) 46	311 (13) 107	202 (17) 73	820 (11) 498	89 (9) 122	422 (20) 246	205 (20) 97	347 (13) 164	2428 (13) 167
30-39	53 (25) 137	642 (26) 203	317 (27) 121	2050 (27) 847	228 (23) 190	591 (28) 397	307 (30) 152	724 (28) 303	4922 (27) 314
40-49	66 (32) 119	859 (35) 249	419 (35) 154	2984 (39) 1488	402 (40) 366	578 (28) 447	303 (30) 164	911 (35) 365	6539 (36) 423
50-59	47 (22) 109	451 (18) 164	170 (14) 73	1313 (17) 953	200 (20) 228	319 (15) 354	152 (15) 106	416 (16) 217	3075 (17) 256
60+	11 (5) 26	147 (6) 46	65 (5) 22	336 (4) 194	73 (7) 63	106 (5) 99	40 (4) 22	146 (6) 62	925 (5) 63
RACE/ETHNICITY (5)									
White	73 (35) 42	1095 (45) 108	308 (26) 65	2975 (39) 1129	577 (57) 143	107 (5) 440	140 (14) 57	965 (37) 190	6256 (35) 201
Black	70 (33) 144	326 (13) 435	155 (13) 183	1534 (20) 2168	178 (18) 428	1148 (55) 339	81 (8) 221	706 (27) 286	4208 (23) 446
Hispanic	60 (29) 50	889 (36) 107	607 (51) 71	2553 (34) 358	201 (20) 178	790 (38) 119	761 (74) 78	778 (30) 128	6654 (37) 136
Asian	<5 (-) -	80 (3) 35	91 (8) 20	195 (3) 93	30 (3) 37	10 (<1) 57	26 (3) 22	104 (4) 42	538 (3) 39
AI/AN	<5 (-) -	9 (<1) 136	<5 (-) -	27 (<1) 689	6 (1) 403	8 (<1) 457	6 (1) 146	10 (<1) 187	69 (<1) 225
EXPOSURE CATEGORY (6)									
MSM	85 (41)	1595 (65)	688 (58)	5086 (67)	707 (70)	898 (43)	607 (59)	1683 (65)	11373 (63)
IDU	20 (10)	67 (3)	62 (5)	172 (2)	27 (3)	102 (5)	41 (4)	144 (6)	635 (4)
MSM/IDU	14 (7)	109 (4)	38 (3)	393 (5)	51 (5)	49 (2)	29 (3)	114 (4)	799 (4)
Hemophi/Transfusion	<5 (-)	17 (1)	11 (1)	14 (<1)	<5 (-)	11 (1)	11 (1)	8 (<1)	78 (<1)
Heterosexual contact	21 (10)	135 (6)	101 (8)	194 (3)	35 (3)	230 (11)	76 (7)	259 (10)	1051 (6)
Mother w/at HIV risk	<5 (-)	17 (1)	16 (1)	38 (1)	16 (2)	51 (2)	14 (1)	24 (1)	181 (1)
Other/Undetermined	63 (30)	499 (20)	275 (23)	1664 (22)	165 (16)	735 (35)	246 (24)	346 (13)	4007 (22)
Total [% of total]	209 [1] 58	2439 [13] 113	1191 [7] 64	7561 [42] 599	1005 [6] 157	2076 [11] 199	1024 [6] 74	2578 [14] 160	18124 [100] 175

1. Based on preliminary number of persons reported with HIV during code-based system from July 1, 2002 to April 17, 2006 and those reported by name from April 17, 2006 to December 31, 2008
2. Rates are based on year 2007 population estimates. Rates that are based on observations few than 20 may not be reliable (see Technical Notes, page 32).
3. Total includes persons with no information on SPA. 4. Age as of December 31, 2008.
5. Does not include persons who have multiple races/ethnicities or have missing information on race/ethnicity.
6. Rate for exposure category is not available, because denominator can only be estimated.

TABLE 24. PRELIMINARY NUMBER OF PERSONS LIVING WITH HIV(1)/AIDS AND RATE PER 100,000 (2) AS OF DECEMBER 31, 2008
BY SERVICE PLANNING AREA (SPA), GENDER, AGE, RACE/ETHNICITY AND EXPOSURE CATEGORY, LOS ANGELES COUNTY

Service Planning Area	Antelope Valley			San Fernando			San Gabriel			Metro			West			South			East			South Bay/LB			Total (3)		
	No.	(%)	Rate	No.	(%)	Rate	No.	(%)	Rate	No.	(%)	Rate	No.	(%)	Rate	No.	(%)	Rate	No.	(%)	Rate	No.	(%)	Rate	No.	(%)	Rate
GENDER																											
Male	379	(78)	211	4918	(88)	458	2367	(83)	258	15167	(92)	2341	2076	(90)	668	3390	(76)	663	2153	(84)	315	6102	(86)	770	36634	(88)	716
Female	108	(22)	60	657	(12)	61	468	(17)	49	1238	(8)	202	224	(10)	68	1099	(24)	206	410	(16)	59	959	(14)	117	5169	(12)	99
AGE GROUP (4)																											
<13	<5	(-)	-	7	(<1)	2	7	(<1)	2	11	(<1)	5	<5	(-)	-	18	(<1)	7	<5	(-)	-	10	(<1)	3	64	(<1)	3
13-19	<5	(-)	-	28	(1)	13	16	(1)	8	62	(<1)	54	11	(<1)	23	57	(1)	42	20	(1)	12	41	(1)	24	239	(1)	22
20-29	36	(7)	62	408	(7)	140	265	(9)	96	1024	(6)	622	122	(5)	167	551	(12)	321	271	(11)	128	529	(7)	250	3213	(8)	220
30-39	92	(19)	237	1137	(20)	359	623	(22)	238	3445	(21)	1424	399	(17)	332	1074	(24)	721	620	(24)	307	1558	(22)	652	8961	(21)	571
40-49	188	(39)	339	2203	(40)	640	1122	(40)	411	6921	(42)	3451	946	(41)	862	1579	(35)	1222	963	(38)	520	2894	(41)	1159	16848	(40)	1089
50-59	120	(25)	278	1320	(24)	481	571	(20)	245	3790	(23)	2752	598	(26)	683	894	(20)	991	493	(19)	344	1527	(22)	796	9340	(22)	778
60+	45	(9)	107	472	(8)	147	231	(8)	79	1152	(7)	666	220	(10)	189	316	(7)	296	192	(7)	104	502	(7)	212	3138	(8)	213
RACE/ETHNICITY (5)																											
White	180	(37)	104	2517	(45)	247	686	(24)	146	6538	(40)	2481	1336	(58)	331	204	(5)	839	367	(14)	149	2774	(39)	546	14642	(35)	471
Black	159	(33)	327	678	(12)	905	417	(15)	492	3038	(19)	4293	377	(16)	906	2404	(54)	710	188	(7)	513	1841	(26)	746	9121	(22)	967
Hispanic	136	(28)	112	2110	(38)	254	1475	(52)	173	6011	(37)	842	486	(21)	431	1833	(41)	277	1917	(75)	197	2137	(30)	352	16132	(39)	331
Asian	7	(1)	53	193	(3)	85	212	(7)	46	437	(3)	208	70	(3)	86	17	(<1)	96	66	(3)	55	258	(4)	105	1261	(3)	92
AI/AN	<5	(-)	-	25	(<1)	377	11	(<1)	218	72	(<1)	1839	14	(1)	941	15	(<1)	857	13	(1)	315	26	(<1)	487	178	(<1)	579
EXPOSURE CATEGORY (6)																											
MSM	213	(44)		3600	(65)		1604	(57)		11379	(69)		1628	(71)		2026	(45)		1502	(59)		4673	(66)		26677	(64)	
IDU	50	(10)		244	(4)		191	(7)		500	(3)		89	(4)		296	(7)		138	(5)		477	(7)		1992	(5)	
MSM/IDU	43	(9)		298	(5)		123	(4)		1019	(6)		124	(5)		171	(4)		111	(4)		455	(6)		2352	(6)	
Hemophi/Transfusion	<5	(-)		51	(1)		37	(1)		56	(<1)		19	(1)		39	(1)		30	(1)		37	(1)		273	(1)	
Heterosexual contact	55	(11)		366	(7)		275	(10)		553	(3)		105	(5)		558	(12)		228	(9)		700	(10)		2842	(7)	
Mother w/at HIV risk	5	(1)		24	(<1)		24	(1)		61	(<1)		20	(1)		73	(2)		24	(1)		41	(1)		273	(1)	
Other/Undetermined	117	(24)		992	(18)		581	(20)		2837	(17)		315	(14)		1326	(30)		530	(21)		678	(10)		7394	(18)	
Total [% of total]	487	[1]	136	5575	[13]	258	2835	[7]	151	16405	[39]	1300	2300	[6]	359	4489	[11]	430	2563	[6]	186	7061	[17]	438	41803	[100]	405

1. Based on preliminary number of persons reported with HIV during code-based system from July 1, 2002 to April 17, 2006 and those reported by name from April 17, 2006 to December 31, 2008.
2. Rates are based on year 2007 population estimates. Rates that are based on observations few than 20 may not be reliable (see Technical Notes, page 32).
3. Total includes persons with no information on SPA.
4. Age as of December 31, 2008.
5. Does not include persons who have multiple races/ethnicities or have missing information on race/ethnicity.
6. Rate for exposure category is not available, because denominator can only be estimated.

FIGURE 3. MALE ADULT/ADOLESCENT AIDS RATES BY RACE/ETHNICITY¹ AND YEAR OF DIAGNOSIS, LOS ANGELES COUNTY, 1992-2007

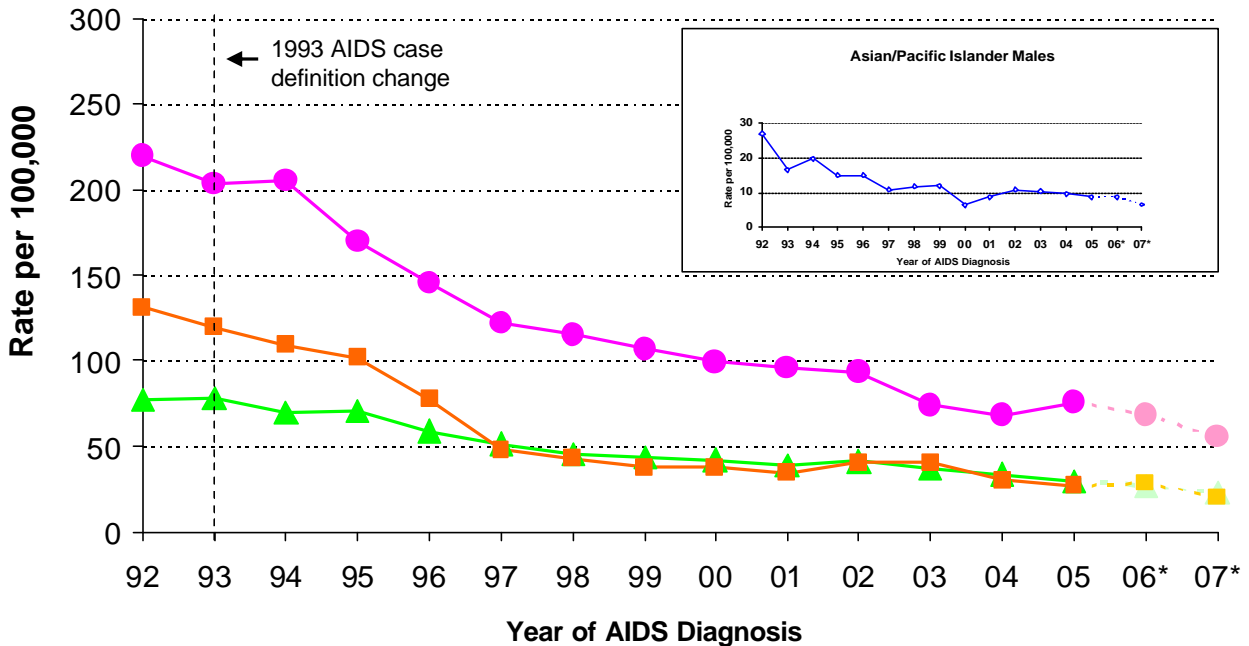
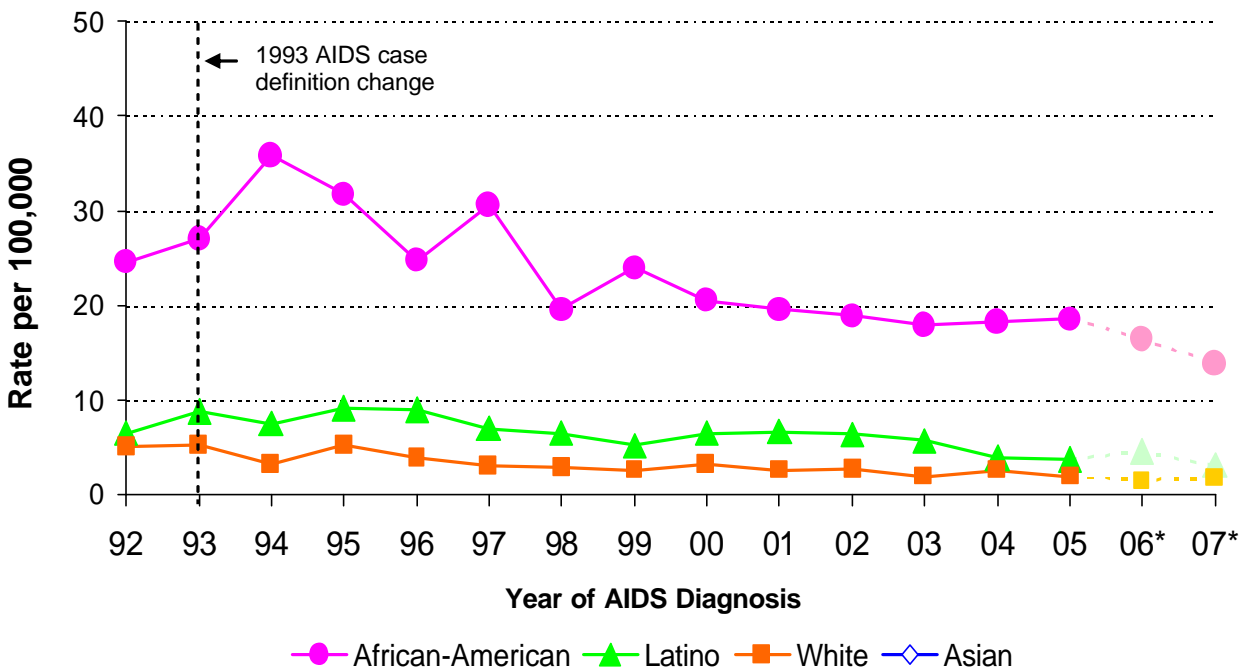


FIGURE 4. FEMALE ADULT/ADOLESCENT AIDS RATES BY RACE/ETHNICITY¹ AND YEAR OF DIAGNOSIS, LOS ANGELES COUNTY, 1992-2007



1. AIDS rates for Asian/Pacific Islander females, Native Americans and Alaskan Natives are not presented here because rates based on small numbers may result in unstable estimates.
 * Data are provisional due to reporting delay.

FIGURE 5. PERCENT OF ADULT/ADOLESCENT AIDS CASES BY RACE/ETHNICITY* AND YEAR OF DIAGNOSIS, LOS ANGELES COUNTY, 1992-2008

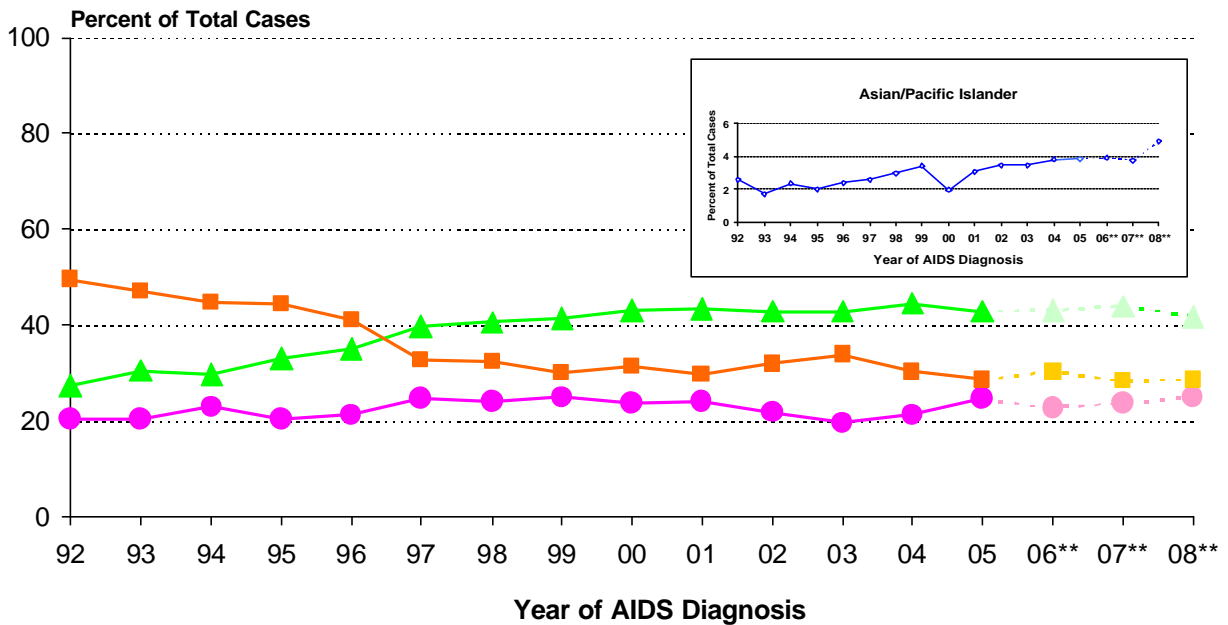
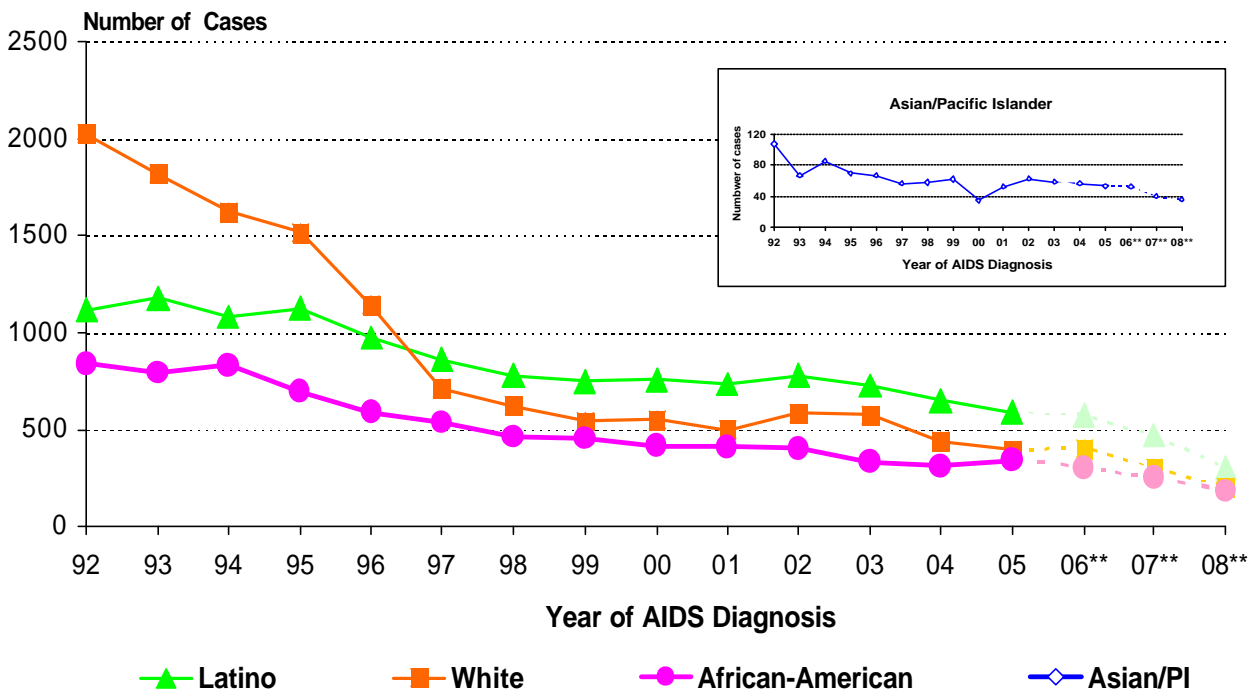


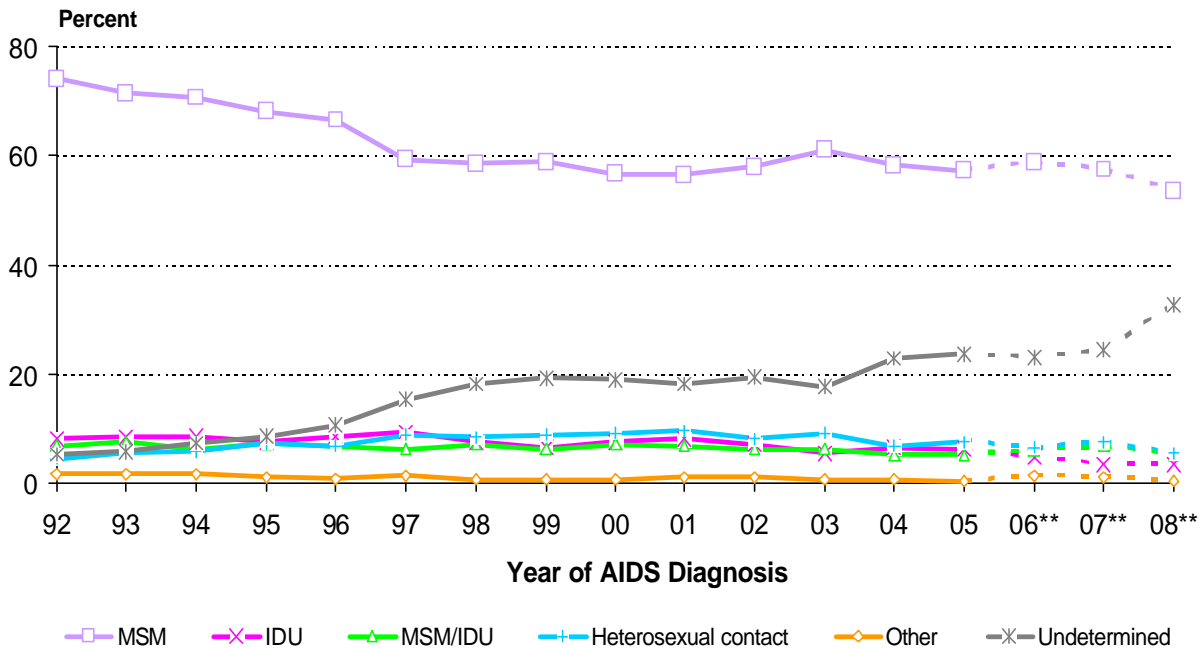
FIGURE 6. NUMBER OF ADULT/ADOLESCENT AIDS CASES BY RACE/ETHNICITY* AND YEAR OF DIAGNOSIS, LOS ANGELES COUNTY, 1992-2008



* American Indian and Alaskan Native are not presented here because small numbers may result in unstable estimates.

** Data are provisional due to reporting delay.

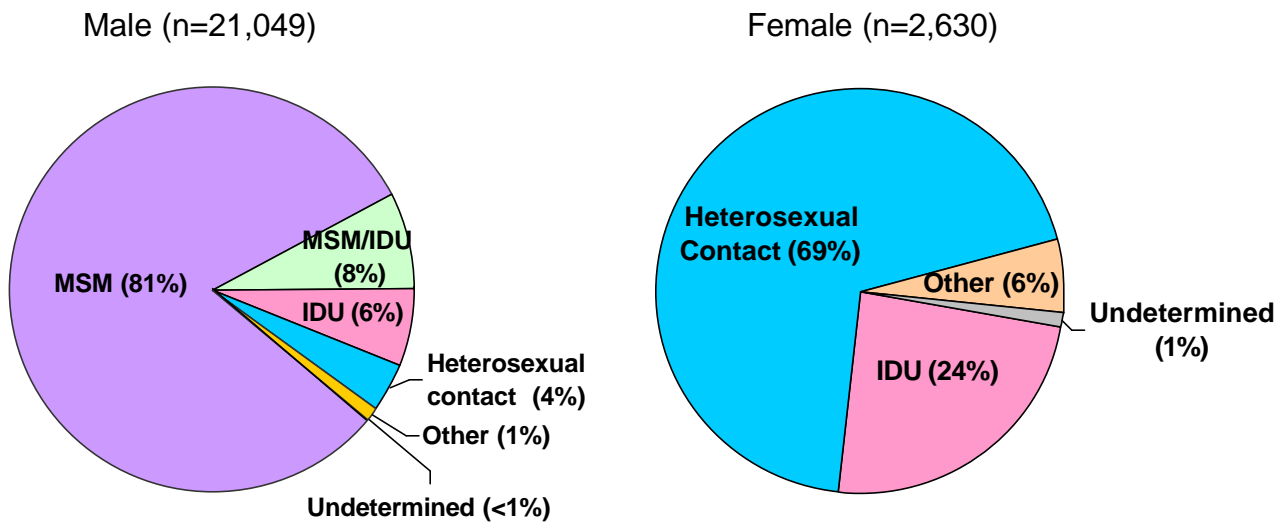
FIGURE 7. PERCENT OF ADULT/ADOLESCENT AIDS CASES BY MODE OF EXPOSURE* AND YEAR OF DIAGNOSIS, LOS ANGELES COUNTY, 1992-2008



* Other risks include hemophilia or coagulation disorder, transfusion recipient, mother with/at risk for HIV, and confirmed other risk.

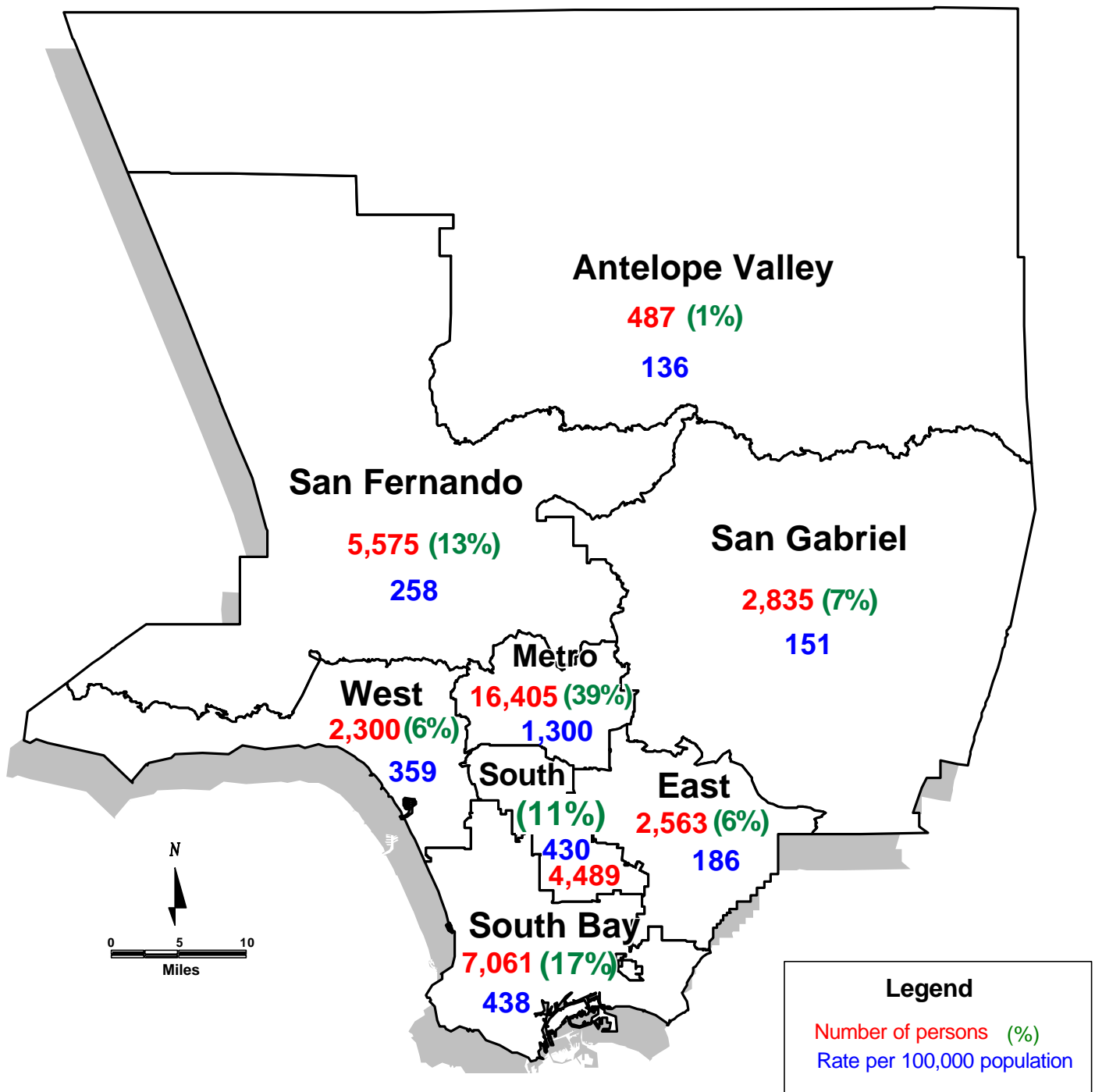
** Data are provisional due to reporting delay.

FIGURE 8. ADJUSTED MODE OF EXPOSURE¹ FOR PERSONS LIVING WITH AIDS AS OF DECEMBER 31, 2008 BY GENDER IN LOS ANGELES COUNTY



1. Persons who had no reported risk for HIV infection had been redistributed to a valid mode of exposure category based on the distribution of reclassified cases reported from 1996-2008 (see technical notes, page 32).

FIGURE 9. PERSONS REPORTED LIVING WITH HIV/AIDS AS OF 12/31/2008 (1) AND LIVING HIV/AIDS RATE (2) PER 100,000 POPULATION BY SERVICE PLANNING AREA (SPA) (3) IN LA COUNTY, (N=41,803)



1. Persons with HIV are based preliminary data collected from July 2002 to December 2008.
 2. Rates are based on population estimates (PEPS) for 2007.
 3. SPA refers to the SPA of residence at time of HIV or AIDS diagnosis.



Appendix 1: 2008 Revised Surveillance Case Definitions for Human Immunodeficiency Virus (HIV) Infection Among Adults and Adolescents (aged ≥13 years)

“These case definitions are intended for public health surveillance only and not as a guide for clinical diagnosis. Public health surveillance data are used primarily for monitoring the HIV epidemic and for planning on a population level, not for making clinical decisions for individual patients. CDC and the Council of State and Territorial Epidemiologists recommend that all states and territories conduct case surveillance of HIV infection and AIDS using the 2008 surveillance case definitions, effective immediately.” ~ MMWR 2008;57 (No. RR-10)

Stage	Laboratory Evidence*	Clinical Evidence
Stage 1	Laboratory confirmation of HIV infection and CD4+ T-lymphocyte count of ≥500 cells/μl or CD4+ T-lymphocyte percentage of ≥29	None required (but no AIDS-defining condition)
Stage 2	Laboratory confirmation of HIV infection and CD4+ T-lymphocyte count of 200-499 cells/μl or CD4+ T-lymphocyte percentage of 14-28	None require (but no AIDS-defining condition)
Stage 3 (AIDS)	Laboratory confirmation of HIV infection and CD4+ T-lymphocyte count of <200 cells/μl or CD4+ T-lymphocyte percentage of <14 [†]	Or documentation of an AIDS-defining condition (with laboratory confirmation of HIV infection) [†]
Stage unknown	Laboratory confirmation of HIV infection and no information on CD4+ T-lymphocyte count or percentage	And no information on presence of AIDS-defining conditions

* The CD4+ T-lymphocyte percentage is the percentage of total lymphocytes. If the CD4+ T-lymphocyte count and percentage do not correspond to the same HIV infection stage, select the more severe stage.

[†] Documentation of an AIDS-defining condition (Appendix 2) supersedes a CD4+ T-lymphocyte count of ≥200 cells/μL and a CD4+ T-lymphocyte percentage of total lymphocytes of ≥14. Definitive diagnostic methods for these conditions are available in Appendix C of the 1993 revised HIV classification system and the expanded AIDS case definition (CDC. 1993 Revised classification system for HIV infection and expanded surveillance case definition for AIDS among adolescents and adults. MMWR 1992;41[No. RR-17]) and from the National Notifiable Diseases Surveillance System (available at http://www.cdc.gov/epo/dphi/casedef/case_definitions.htm).

[§] Although cases with no information on CD4+ T-lymphocyte count or percentage or on the presence of AIDS-defining conditions can be classified as stage unknown, every effort should be made to report CD4+ T-lymphocyte counts or percentages and the presence of AIDS-defining conditions at the time of diagnosis. Additional CD4+ T-lymphocyte counts or percentages and any identified AIDS-defining conditions can be reported as recommended. (Council of State and Territorial Epidemiologists. Laboratory reporting of clinical test results indicative of HIV infection: new standards for a new era of surveillance and prevention [Position Statement 04-ID-07]; 2004. Available at <http://www.cste.org/ps/2004pdf/04-ID-07-final.pdf>.)

Criteria for HIV infection for persons aged ≥13 years:

Laboratory Criteria:

Positive result from an HIV antibody screening test (e.g., reactive enzyme immunoassay [EIA]*) confirmed by a positive result from a supplemental HIV antibody test (e.g., Western blot or indirect immunofluorescence assay test) OR positive result or report of a detectable quantity (i.e., within the established limits of the laboratory test) from any of the following HIV virologic (i.e., non-antibody) tests[†]:

- HIV nucleic acid (DNA or RNA) detection test (e.g., polymerase chain reaction [PCR])
- HIV p24 antigen test, including neutralization assay
- HIV isolation (viral culture)

Other Criterion (for Cases that Do Not Meet Laboratory Criteria)

HIV infection diagnosed by a physician or qualified medical-care provider[§] based on the laboratory criteria and documented in a medical record[¶]. Oral reports of prior laboratory test results are not acceptable.

* Rapid tests are EIAs that do not have to be repeated but require a confirmatory test if reactive. Most conventional EIAs require a repeatedly reactive EIA that is confirmed by a positive result with a supplemental test for HIV antibody. Standard laboratory testing procedures should always be followed.

[†] For HIV screening, HIV virologic (non-antibody) tests should not be used in lieu of approved HIV antibody screening tests. A negative result (i.e., undetectable or nonreactive) from an HIV virologic test (e.g., viral RNA nucleic acid test) does not rule out the diagnosis of HIV infection.

§ Qualified medical-care providers might differ by jurisdiction and might include physicians, nurse practitioners, physician assistants, or nurse midwives.

¶ An original or copy of the laboratory report is preferred; however, in the rare instance the laboratory report is not available, a description of the laboratory report results by a physician or qualified medical-care provider documented in the medical record is acceptable for surveillance purposes. Every effort should be made to obtain a copy of the laboratory report for documentation in the medical record.

For the criteria for HIV infection among children aged <13 years, see “Revised Surveillance Case Definitions for HIV Infection Among Adults, Adolescents, and Children Aged <18 Months and for HIV Infection and AIDS Among Children Aged 18 Months to <13 Years --- United States, 2008”- MMWR 2008;57 (No. RR-10) <http://www.cdc.gov/mmwr/preview/mmwrhtml/rr5710a1.htm>

Appendix 2: AIDS-Defining Conditions

- Bacterial infections, multiple or recurrent*
- Candidiasis of bronchi, trachea, or lungs
- Candidiasis of esophagus †
- Cervical cancer, invasive §
- Coccidioidomycosis, disseminated or extrapulmonary
- Cryptococcosis, extrapulmonary
- Cryptosporidiosis, chronic intestinal (>1 month’s duration)
- Cytomegalovirus disease (other than liver, spleen, or nodes), onset at age >1 month
- Cytomegalovirus retinitis (with loss of vision) †
- Encephalopathy, HIV related
- Herpes simplex: chronic ulcers (>1 month’s duration) or bronchitis, pneumonitis, or esophagitis (onset at age >1 month)
- Histoplasmosis, disseminated or extrapulmonary
- Isosporiasis, chronic intestinal (>1 month’s duration)
- Kaposi sarcoma†
- Lymphoid interstitial pneumonia or pulmonary lymphoid hyperplasia complex*†
- Lymphoma, Burkitt (or equivalent term)
- Lymphoma, immunoblastic (or equivalent term)
- Lymphoma, primary, of brain
- *Mycobacterium avium* complex or *Mycobacterium kansasii*, disseminated or extrapulmonary†
- *Mycobacterium tuberculosis* of any site, pulmonary, †§ disseminated,† or extrapulmonary†
- *Mycobacterium*, other species or unidentified species, disseminated† or extrapulmonary†
- *Pneumocystis jirovecii* pneumonia†
- Pneumonia, recurrent †§
- Progressive multifocal leukoencephalopathy
- *Salmonella* septicemia, recurrent
- Toxoplasmosis of brain, onset at age >1 month †
- Wasting syndrome attributed to HIV

* Only among children aged <13 years. (CDC. 1994 Revised classification system for human immunodeficiency virus infection in children less than 13 years of age. MMWR 1994;43[No. RR-12].)

† Condition that might be diagnosed presumptively.

§ Only among adults and adolescents aged ≥13 years. (CDC. 1993 Revised classification system for HIV infection and expanded surveillance case definition for AIDS among adolescents and adults. MMWR 1992;41[No. RR-17].)

Appendix 3: Technical Notes

Reporting Delay

Reporting delay is defined as the time interval between the date an AIDS diagnosis was made and the date the case was reported. The median reporting delay for all cases reported in 2007 was 7 months (range 0 to 300 months). The impact of report delay must be considered when evaluating trends in case numbers and rates over time (Figure 1-7, Tables 1, 4-8, 10, 13-14, 18, and 20-24).

Rates

For Figure 3-4, Table 4, Table 13- 15, Table 17-19, Table 21 and Table 23-24. AIDS case rates are calculated using Population Estimation and Projection System (PEPS) for 1992-2007 that were prepared by Walter R. McDonald & Associates, Inc. (WRMA) for Urban Research, LA County CAO. Conforming to standard criterion used by the National Center for Health Statistics, rates are considered unreliable when the relative standard error of the rate is greater than or equal to 23%--that is, when rates are based on less than 20 observations.

Race and ethnicity

Mandated collection of race and ethnicity data was implemented in January 1, 2003 as required by the OMB Statistical Policy Directive 15. A minimum of 5 race categories should be collected including American Indian or Alaska Native, Asian, black or African American, Native Hawaiian or Other Pacific Islander, and white. Additionally, systems must be able to retain information when multiple racial categories are reported. Two ethnicity categories should be collected regardless of race: Hispanic and non-Hispanic.

Race and Ethnicity in this report are grouped using the following criteria exclusively: A record is considered to be 'Hispanic' if so indicated in race or ethnicity field, regardless of any other race information found on the record. When not indicated as 'Hispanic', a record is considered to be 'American Indian/Alaskan Native' if the race field contains AI/AN information, regardless of any other race information found on the record. A record is considered to be 'Asian/Pacific Islander' when either indicated as Asian or Native Hawaiian/Pacific Islander, or both in the race fields. Aside from the above criteria, a record is categorized as 'Multi-race' when more than one race are indicated in the above race fields. All other records with a single race indicated are placed in the corresponding race category. Persons with multiple racial categories or unknown race are included in the total numbers in Table 2-4, Table 11, Table 15-20 and Table 21-24.

Exposure Categories

Exposure categories are assigned in a hierarchical fashion (listed from highest to lowest in the column headed "Exposure Category"). Cases for which more than one exposure category have been identified are assigned to the category listed highest in the hierarchy. For example, a man who reports sexual contact with another man and heterosexual contact with an HIV-positive woman would be classified as "male-male sexual contact." The only exception to this rule includes those men who report both sexual contact with another man and injection-drug use. A separate exposure category has been created for these cases.

The "Undetermined" exposure category includes persons with no history of exposure to HIV through one of the defined exposure categories. Cases reported as undetermined include some persons still under investigation. If the investigation identifies a mode of exposure, the case is reclassified into the corresponding exposure category. Because recently reported AIDS cases are more likely to be reported without sufficient risk factor information, recent AIDS incidence in some transmission categories will be underestimated unless an adjustment is made. For figures that show the distribution of AIDS cases by adjusted mode of exposure, persons who had no reported risk for HIV exposure were redistributed to other valid exposure categories based on the sex-, and race-specific distribution of the cases reported from 1993 to 2002 and reclassified to a valid exposure category.

AIDS-Indicator Conditions

At the time of initial case report, all available information about AIDS-defining conditions is collected. However, after a case has been reported, systematic follow-up is not done to identify subsequent AIDS-defining conditions. Therefore, the information presented in Table 12 reflects initial AIDS-defining condition(s) and should be considered a minimum estimate of all AIDS-defining conditions.

All persons meeting the CDC AIDS case or HIV definition are reportable by name as required by the *California Code of Regulations, Title 17, Section 2500/2600/2641.5-2643.20*. If you have questions on how to report a case, would like a case report form and/or information on the case definition, would like assistance establishing an HIV/AIDS surveillance system, or receive the semi-annual surveillance summary and other periodic reports, contact the HIV Epidemiology Program at the address below:

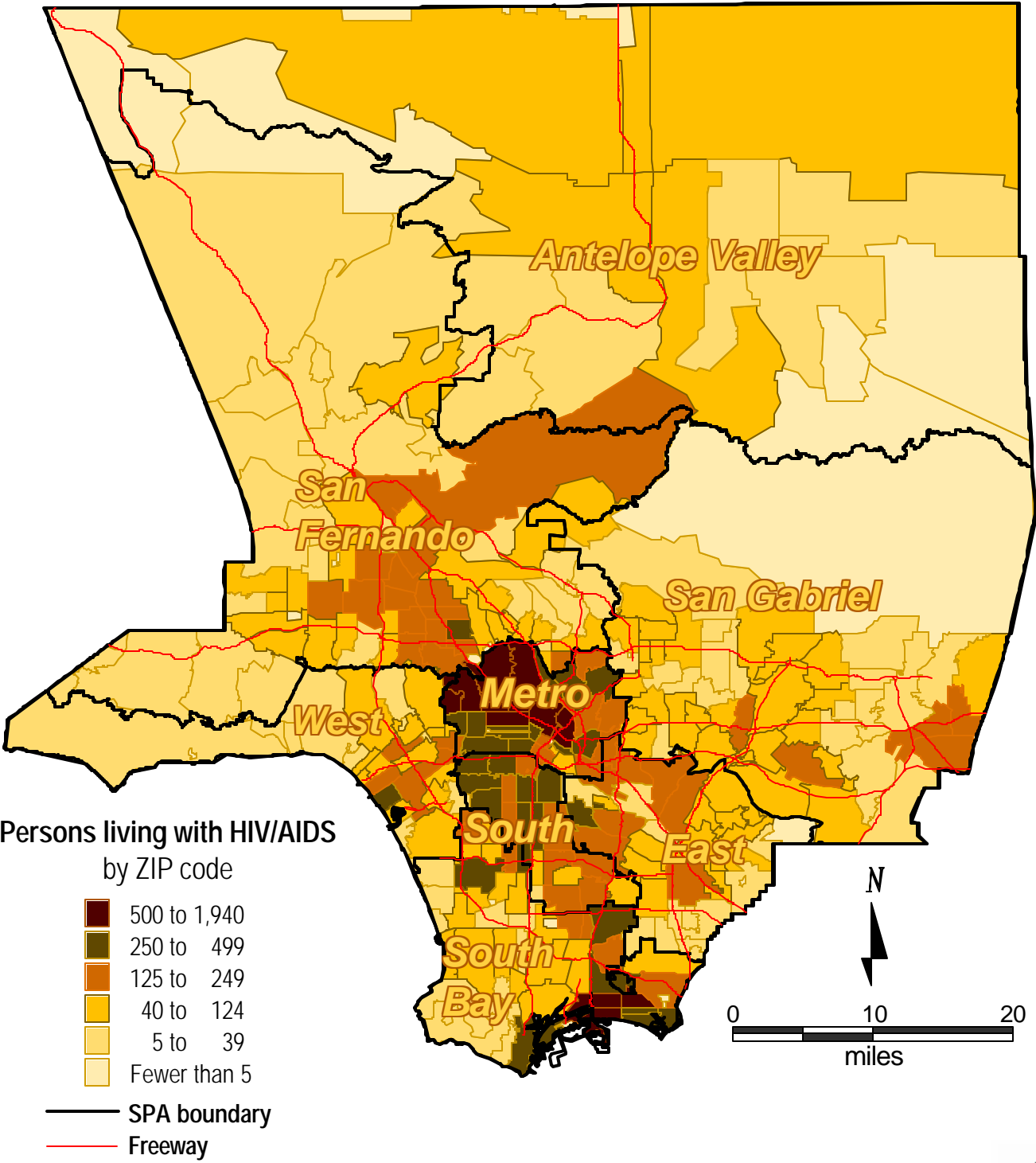
HIV Epidemiology Program
Los Angeles County Department of Public Health
600 South Commonwealth Avenue, Suite 1260
Los Angeles, California 90005
Phone: (213) 351-8516
FAX: (213) 487-4683
Email: hivepiemail@ph.lacounty.gov

DOCUMENTING HIV RISK (MODE OF HIV EXPOSURE)

Timely information on transmission risk for persons diagnosed with HIV and AIDS is important for HIV prevention planning and resource allocation.

- ✓ In over 20% of persons reported with HIV and AIDS, providers did not document and/or report a mode of exposure to HIV.
- ✓ The diagnosing provider should always ask patients and clients about their HIV exposure risks and document them in both the medical record and the case report form.
- ✓ Exposure categories for HIV transmission include:
 1. Men who have sex with men
 2. Recreational injection drug users
 3. Recipients of blood transfusions, organ/other tissue transplants
 4. Sexual partners of HIV-infected persons
 5. Sexual partners of injection drug users
 6. Female sexual partners of men who have sex with men
 7. Sexual partners of persons with clotting disorders, hemophiliacs
 8. Infants born of and/or breast-fed by HIV-infected women

**FIG 10. PERSONS LIVING WITH HIV/AIDS AS OF 12/31/2008 (1)
BY ZIP CODE (2) AND SERVICE PLANNING AREA (SPA)
IN LOS ANGELES COUNTY (N=41,803)**



1. Persons with HIV are based on the preliminary data collected from July 2002 to December 2008.
 2. ZIP code information is based on the residence at time of diagnosis or the care facility location when the residential information is unknown.