

HIV/AIDS SEMI-ANNUAL SURVEILLANCE SUMMARY

January 2010

Cases Reported as of December 31, 2009



Enriching Lives

HIV EPIDEMIOLOGY PROGRAM

600 S. Commonwealth Avenue

Suite 1920

Los Angeles, CA 90005

Phone: (213) 351-8196

Fax: (213) 487-9386

<http://publichealth.lacounty.gov/hiv/>

JONATHAN E. FIELDING, M.D., M.P.H.
Director and Health Officer

JONATHAN E. FREEDMAN
Chief Deputy Director

313 North Figueroa Street, Room 806
Los Angeles, California 90012
TEL (213) 240-8117 • FAX (213) 975-1273

HIV Epidemiology Program

January 29, 2010

Douglas Frye, M.D., M.P.H., Director
600 South Commonwealth Avenue, Suite 1920
Los Angeles, California 90005
TEL (213) 351-8196 • FAX (213) 487-9386

<http://publichealth.lacounty.gov/hiv>

BOARD OF SUPERVISORS

Gloria Molina
First District

Mark Ridley-Thomas
Second District

Zev Yaroslavsky
Third District

Don Knabe
Fourth District

Michael D. Antonovich
Fifth District

Dear Colleague:

Enclosed you will find the January 2010 issue of the *HIV/AIDS Semi-annual Surveillance Summary* for L.A. County. As of December 31, 2009, 56,091 persons have been reported with AIDS, of whom 24,643 are now living with AIDS. Including those reported during code-based system between July 2002 and April 17, 2006, we have also reported 20,292 cases of non-AIDS HIV, of whom 19,807 are now living with HIV. While still an undercount, a total of 44,450 persons have been reported as living with HIV/AIDS in the county. We still have a backlog of some 7,300 cases to investigate and report. Until such time as we can assure that the HIV registry is complete and representative of HIV cases in Los Angeles County, these data will not be made available for detailed analysis.

Since the last issue, one year ago, the HIV surveillance has undergone extensive change. In the last many months, the HIV/AIDS Reporting System, or HARS, has been migrated to a new more powerful database called Evaluation HARS, or eHARS for short. Due to the time and effort needed to complete this transition, we were unable to send out a July issue of the summary report.

Changes in this report to look out for include:

- Due to the conversion to eHARS with its changed algorithm, the number for some of the risk categories may appear to have changed artificially. For example, the number for transfusion recipient categories is significantly smaller, from 572 in the January 2009 report, to 450 in this report (see footnote in Table 3).
- We have replaced Table 11 "Cumulative Adult/Adolescent and Pediatric Cases of Injection Drug-associated AIDS by Gender, Exposure Category, and Race/Ethnicity" with a more useful Table 24 that shows preliminary racial/ethnic-specific and gender-specific statistics for persons living with HIV/AIDS by age group, exposure category, and SPA.

Now you may choose to receive the semi-annual summary either by mail (hard copy) or by e-mail (electronic version). Please visit our program web site at <http://publichealth.lacounty.gov/hiv/>, click the link "Subscribe to the Mailing List" and complete the subscription form. Your personal information will be kept confidential and secure in our system. We will deliver the next semi-annual summary to you based on your choice. Alternatively, you can fill out a subscription form (see insert) and return it to us by fax.

As always, a fillable HIV/AIDS case report form is available in Acrobat format (PDF) for download at <http://publichealth.lacounty.gov/hiv/hivreporting.htm>. Because of severe penalties included in the HIV reporting law for breaches in security and confidentiality, HIV Epidemiology Program strongly suggests you **NOT** email or fax laboratory reports of HIV-indicative results to us. Instead, please mail in your report to us in a double-envelope at: 600 S. Commonwealth Ave., Suite 1260, Los Angeles, CA 90005 or phone us at: (213) 351-8516. Data presented in this summary report, and other HIV-related information, are available at our Web site. You may request HIV and AIDS data by phone or by logging onto our Web site.

Sincerely,



Douglas M. Frye

NOTICE TO HEALTH CARE PROVIDERS AND OTHERS RESPONSIBLE FOR DISEASE REPORTING:

California Code of Regulations, Title 17, Section 2500 requires that all diagnosed or suspected cases of AIDS as defined by CDC must be reported within seven (7) days to the Health Officer. California Code of Regulations, Title 17, Section 2600/2641.5-2643.20 require both health care providers and laboratories to report HIV cases by name to the Health Officer within seven (7) days. In addition, Senate Bill (SB) 1184 requires each clinical laboratory to report all CD4+ T-cell tests to the local health officer within seven (7) days of the completion of a CD4+ T-cell test. To obtain more information on the HIV/AIDS reporting requirement, or to obtain case report forms or to report a case, please visit our web site: <http://publichealth.lacounty.gov/hiv/hivreporting.htm>, or contact the HIV Epidemiology Program, 600 South Commonwealth Avenue, Suite 1260, Los Angeles, CA 90005. Phone (213) 351-8516; Fax (213) 487-4683.

The *HIV/AIDS Surveillance Summary* is published semiannually by the HIV Epidemiology Program, Los Angeles County Department of Public Health. Copies of this report are available free of charge. Individuals or organizations may complete the subscription form by visiting our program web site at <http://publichealth.lacounty.gov/hiv/> to be added to the mailing list. This report is also available at our web site at <http://publichealth.lacounty.gov/hiv/>.

Suggested Citation: HIV Epidemiology Program, Los Angeles County Department of Public Health. HIV/AIDS Surveillance Summary, January 2010: 1-33.

Los Angeles County Department of Public Health Jonathan E. Fielding, M.D, M.P.H.
Director and Health Officer

Communicable Disease Control and Prevention Robert Kim-Farley, M.D., M.P.H.
Director

HIV Epidemiology Program Douglas Frye, M.D., M.P.H.
Director

Data Analysis Unit Virginia Hu, M.P.H.
Chief, Supervising Epidemiologist
Zhijuan Sheng, M.S.
Epidemiologist

Data Acquisition Unit..... Latonya Taylor, R.N., M.S.N./M.P.H.,C.N.S.
Chief, Assistant Program Specialist

CONTENTS

Surveillance Summary	1
Figure 1: AIDS Cases Reported and Diagnosed by Year, Los Angeles County, 1985- 2009	2
Figure 2: Cases of AIDS by Year of Diagnosis and Deaths among AIDS Cases by Year of Death, Los Angeles County.....	3
Table 1: AIDS Cases, Deaths, and Persons Living with AIDS by Year, Los Angeles County	3
Table 2: Cumulative Cases of AIDS by Gender, Age, and Race/Ethnicity, Los Angeles County	4
Table 3: Cumulative Adult/Adolescent Cases of AIDS by Gender, Exposure Category, and Race/Ethnicity, Los Angeles County.....	5
Table 4: Annual Cases of AIDS and Rates per 100,000 by Gender, Year of Diagnosis, and Race/Ethnicity, Los Angeles County.....	6
Table 5: Annual Cases of AIDS by Gender, Exposure Category, and Year of Diagnosis, Los Angeles County.....	7
Table 6: Annual White Cases of AIDS by Gender, Exposure Category, and Year of Diagnosis, Los Angeles County	8
Table 7: Annual Black Cases of AIDS by Gender, Exposure Category, and Year of Diagnosis, Los Angeles County	9
Table 8: Annual Hispanic Cases of AIDS by Gender, Exposure Category, and Year of Diagnosis, Los Angeles County.....	10
Table 9: Cumulative Pediatric Cases of AIDS by Exposure Category and Race/Ethnicity, Los Angeles County.....	11
Table 10: Pediatric Cases of AIDS by Race/Ethnicity, Exposure Category, and Year of Diagnosis, Los Angeles County.....	11
Table 11: Cumulative Adult/Adolescent AIDS Indicator Conditions at Time of Diagnosis by Gender, Los Angeles County.....	12
Table 12: Annual Cases of AIDS and Rates per 100,000 by Service Planning Area/Health District of Residence and Year of Diagnosis, Los Angeles County	13
Table 13: Annual Cases of AIDS and Rates per 100,000 by City/Area of Residence and Year of Diagnosis, Top 35 Cities Ranked by 2008 Rate, Los Angeles County	14
Table 14: Reported Numbers and Rates per 100,000 for Persons Diagnosed with AIDS and Persons Living with AIDS as of December 31, 2009 by Gender, Age, Race/Ethnicity, and Exposure Category, Los Angeles County.....	15
Table 15: Cumulative Number of Persons Diagnosed with AIDS by Gender, Age, Race/Ethnicity, and Exposure Category for each Service Planning Area in Los Angeles County, 1982-2009	16
Table 16: Number of Persons Diagnosed with AIDS and Rate per 100,000 in Year 2008 by Gender, Age, Race/Ethnicity, and Exposure Category for each Service Planning Area in Los Angeles County ..	17
Table 17: Persons Living with AIDS and Rate per 100,000 at the End of Calendar Year, by Gender, Age, Race/Ethnicity, and Exposure Category, Los Angeles County	18
Table 18: Persons Living with AIDS and Rate per 100,000 as of December 31, 2009 by Service Planning	

	Area, Gender, Age, Race/Ethnicity, and Exposure Category, Los Angeles County	19
Table 19:	Racial/Ethnic- and Gender-Specific Numbers and Percentage for Persons Living with AIDS as of December 31, 2009 by Age, Exposure Category, and Service Planning Area, Los Angeles County	20
Table 20:	Annual Adult/Adolescent Cases of AIDS and Rates per 100,000 by Gender, Year of Diagnosis, and Race/Ethnicity, Los Angeles County	21
Table 21:	Annual Deaths among AIDS Cases by Age, Race/Ethnicity, Gender, Exposure Category, and Service Planning Area, Los Angeles County.....	22
Table 22:	Preliminary Number of Persons Living with Non-AIDS HIV and Rate per 100,000 as of December 31, 2009 by Service Planning Area, Gender, Age, Race/Ethnicity, and Exposure Category, Los Angeles County	23
Table 23:	Preliminary Number of Persons Living with HIV/AIDS and Rate per 100,000 as of December 31, 2009 by Service Planning Area, Gender, Age, Race/Ethnicity, and Exposure Category, Los Angeles County	24
Table 24:	Racial/Ethnic- and Gender-Specific Numbers and Percentage for Persons Living with HIV/AIDS as of December 31, 2009 by Age, Exposure Category, and Service Planning Area, Los Angeles County	25
Figure 3:	Male Adult/Adolescent AIDS Rates by Race/Ethnicity and Year of Diagnosis, Los Angeles County, 1992-2008	26
Figure 4:	Female Adult/Adolescent AIDS Rates by Race/Ethnicity and Year of Diagnosis, Los Angeles County, 1992-2008	26
Figure 5:	Percent of Adult/Adolescent AIDS Cases by Race/Ethnicity and Year of Diagnosis, Los Angeles County, 1992-2009.....	27
Figure 6:	Number of Adult/Adolescent AIDS Cases by Race/Ethnicity and Year of Diagnosis, Los Angeles County, 1992-2009.....	27
Figure 7:	Percent of Adult/Adolescent AIDS Cases by Mode of Exposure and Year of Diagnosis, Los Angeles County, 1992-2009	28
Figure 8:	Adjusted Mode of Exposure for Persons Living with AIDS as of December 31, 2009 by Gender in Los Angeles County	28
Figure 9	Persons Reported Living with HIV/AIDS as of December 31, 2009 and Living HIV/AIDS Rate per 100,000 Population by Service Planning Area in Los Angeles County	29
Appendix 1:	2008 Revised Surveillance Case Definitions for Human Immunodeficiency Virus (HIV) Infection Among Adults and Adolescents (aged ≥ 13 years).....	30
Appendix 2:	AIDS-Defining Conditions	31
Appendix 3:	Technical Notes	32
Figure 10:	Persons Living with HIV/AIDS as of December 31, 2009 by Zip Code and Service Planning Area in Los Angeles County	Back Cover

**Los Angeles County Department of Public Health
HIV Epidemiology Program
AIDS Semi-annual Surveillance Summary, July-December 2009**

Los Angeles County¹

New cases reported this period	452
Deaths reported this period	72
Cumulative cases	56,091
Cumulative deaths	31,448
Living cases	24,643

California²

Cumulative cases	153,901
Cumulative deaths	86,396
Living cases	67,505

United States³

Cumulative cases	1,051,875
Cumulative deaths	583,298
Living cases	468,577

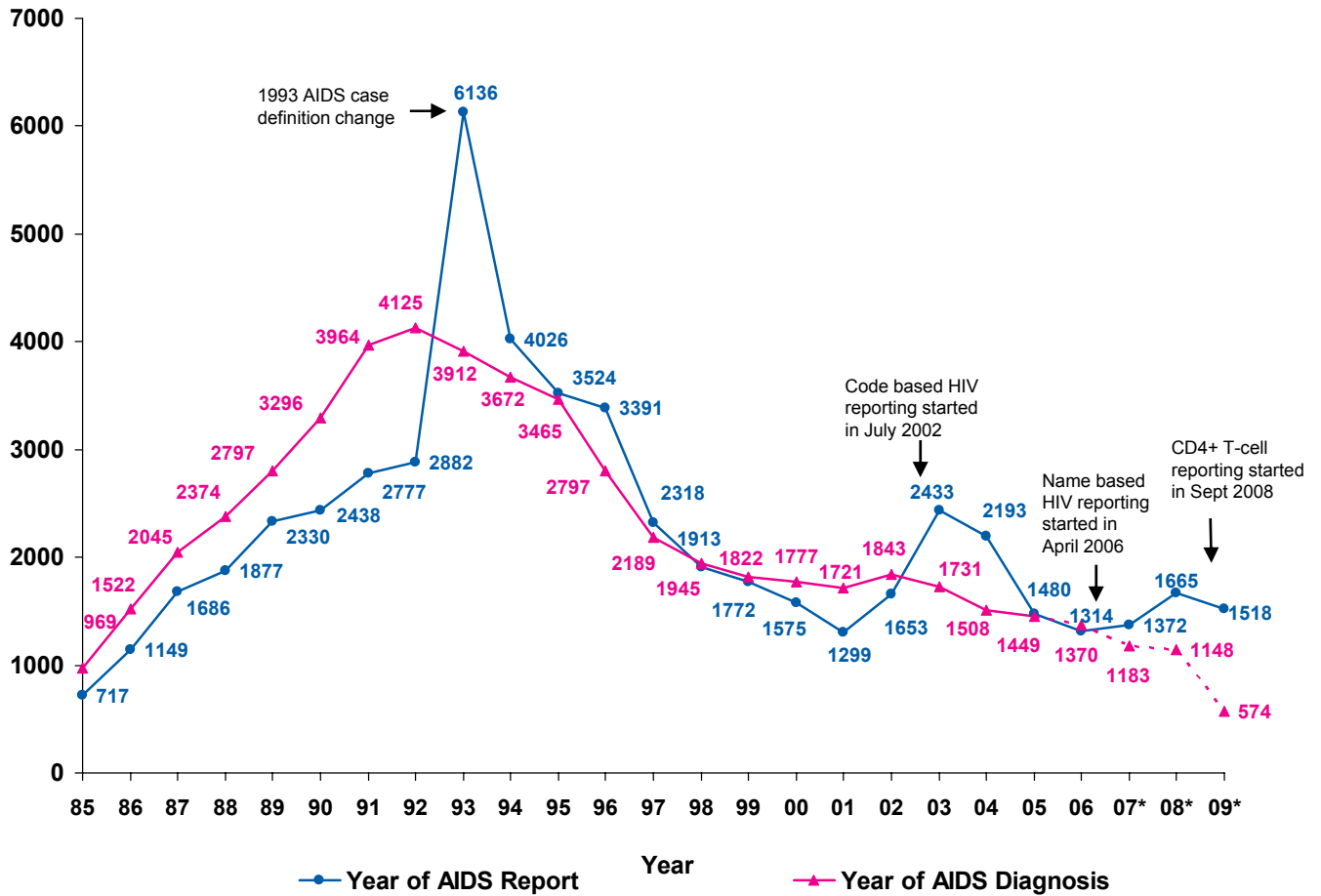
¹ Includes all cases reported to the HIV Epidemiology Program as of December 31, 2009.

² California Office of AIDS, HIV/AIDS Case Registry. Monthly HIV/AIDS Statistics in California, April 30, 2009.

³ Centers for Disease Control and Prevention. HIV/AIDS Surveillance Report, 2007. Vol. 19.

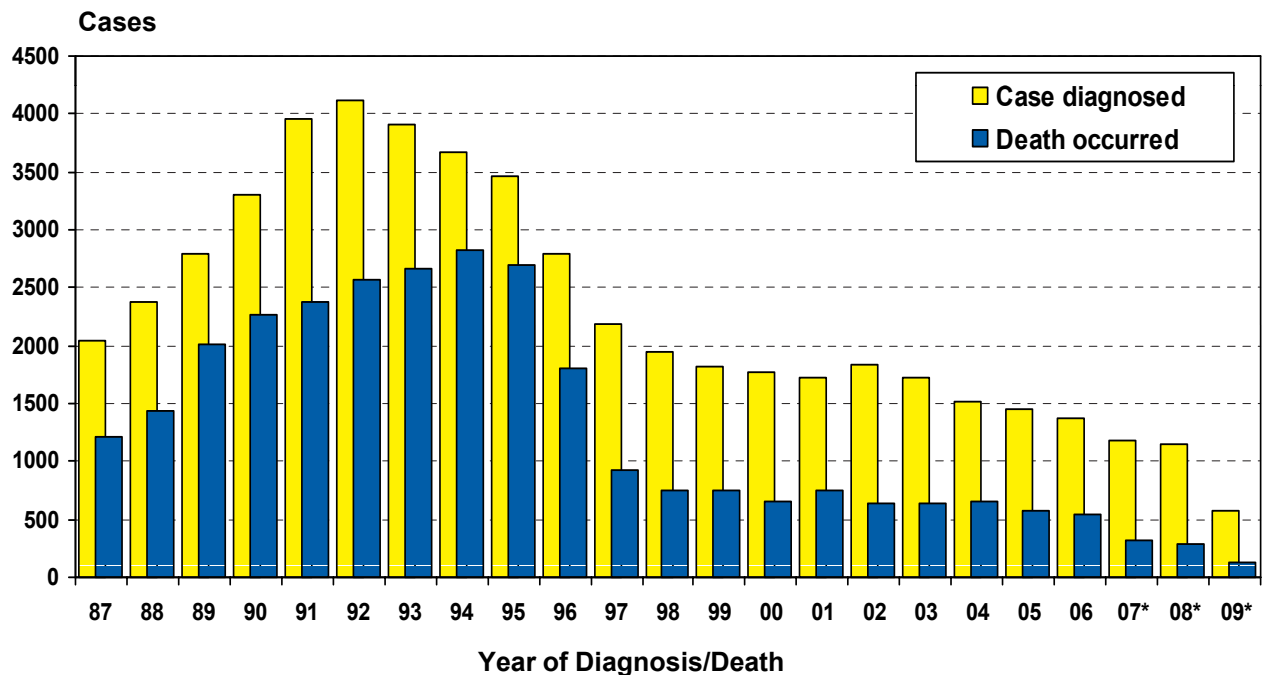
The figures do not represent an enumeration of actual cases for this category. Rather, it is a point estimate of cases for this category that has been adjusted for reporting delay, but not adjusted for incomplete reporting.

FIGURE 1. AIDS CASES REPORTED AND DIAGNOSED BY YEAR, LOS ANGELES COUNTY, 1985-2009



* Cases diagnosed in 2007-2009 are provisional due to reporting delay.

FIGURE 2. CASES OF AIDS BY YEAR OF DIAGNOSIS AND DEATHS AMONG AIDS CASES BY YEAR OF DEATH, LOS ANGELES COUNTY



* Data are provisional for 2007-2009.

TABLE 1. AIDS CASES, DEATHS, AND PERSONS LIVING WITH AIDS BY YEAR REPORTED BY DECEMBER 31, 2009, LOS ANGELES COUNTY

Year	No. of Cases diagnosed	No. of Deaths occurred ¹	No. of Living cases ²
1982 - 1989	10600	6667	3933
1990	3296	2258	4971
1991	3964	2381	6554
1992	4125	2567	8112
1993	3912	2660	9364
1994	3672	2825	10211
1995	3465	2698	10978
1996	2797	1800	11975
1997	2189	929	13235
1998	1945	750	14430
1999	1822	756	15496
2000	1777	648	16625
2001	1721	745	17601
2002	1843	634	18810
2003	1731	636	19905
2004	1508	657	20756
2005	1449	570	21635
2006	1370	542	22463
2007 (3)	1183	316	23330
2008 (3)	1148	282	24196
2009 (3)	574	127	24643
Cumulative	56091	31448	

1. The number of deaths among persons of AIDS is based on the date of death report when the actual year of death is unknown.
 2. Includes persons living with AIDS at the end of each year.
 3. Data are provisional due to reporting delay.

TABLE 2. CUMULATIVE CASES OF AIDS BY GENDER, AGE, AND RACE/ETHNICITY
 REPORTED BY DECEMBER 31, 2009
 LOS ANGELES COUNTY

Age at Diagnosis (years)	Race/Ethnicity					
	White No. (%)	Black No. (%)	Hispanic No. (%)	Asian/PI (1) No. (%)	AI/AN (2) No. (%)	Total (3) No. (%)
MALE						
<13	25 (<1)	51 (1)	59 (<1)	<5 (-)	<5 (-)	139 (<1)
13-19	36 (<1)	55 (1)	119 (1)	7 (1)	<5 (-)	220 (<1)
20-29	2745 (12)	1526 (16)	3638 (22)	166 (14)	42 (22)	8119 (16)
30-39	10352 (43)	3981 (42)	7399 (45)	512 (42)	84 (44)	22337 (44)
40-49	7164 (30)	2723 (29)	3652 (22)	372 (30)	44 (23)	13963 (27)
50-59	2669 (11)	915 (10)	1180 (7)	129 (11)	14 (7)	4908 (10)
60+	868 (4)	239 (3)	419 (3)	34 (3)	<5 (-)	1564 (3)
Male subtotal	23859	9490	16466	1223	191	51250
[% of subtotal]	[47]	[19]	[32]	[2]	[<1]	[100]
FEMALE						
<13	19 (2)	38 (2)	55 (3)	<5 (-)	<5 (-)	115 (2)
13-19	12 (1)	21 (1)	35 (2)	<5 (-)	<5 (-)	72 (1)
20-29	160 (16)	360 (20)	437 (23)	17 (14)	<5 (-)	977 (20)
30-39	362 (36)	658 (36)	647 (35)	40 (33)	13 (43)	1720 (36)
40-49	258 (26)	488 (27)	394 (21)	36 (30)	8 (27)	1185 (24)
50-59	114 (11)	191 (11)	203 (11)	15 (12)	<5 (-)	527 (11)
60+	82 (8)	57 (3)	97 (5)	7 (6)	<5 (-)	245 (5)
Female subtotal	1007	1813	1868	122	30	4841
[% of subtotal]	[21]	[37]	[39]	[3]	[1]	[100]
BOTH						
<13	44 (<1)	89 (1)	114 (1)	6 (<1)	<5 (-)	254 (<1)
13-19	48 (<1)	76 (1)	154 (1)	11 (1)	<5 (-)	292 (1)
20-29	2905 (12)	1886 (17)	4075 (22)	183 (14)	45 (20)	9096 (16)
30-39	10714 (43)	4639 (41)	8046 (44)	552 (41)	97 (44)	24057 (43)
40-49	7422 (30)	3211 (28)	4046 (22)	408 (30)	52 (24)	15148 (27)
50-59	2783 (11)	1106 (10)	1383 (8)	144 (11)	18 (8)	5435 (10)
60+	950 (4)	296 (3)	516 (3)	41 (3)	5 (2)	1809 (3)
Total	24866	11303	18334	1345	221	56091
[% of total]	[44]	[20]	[33]	[2]	[<1]	[100]

1. Includes 13 Burmese, 62 Cambodian, 118 Chinese, 371 Filipino, 18 Guamanian, 40 Hawaiian, 23 Indian, 22 Indonesian, 138 Japanese, 50 Korean, <5 Laotian, 9 Malayan, 11 Pacific Islander, <5 Pakistani, 33 Samoan, <5 Singaporean, <5 Sri Lankan, <5 Tahitian, 33 Taiwanese, 102 Thai, <5 Tongan, and 105 Vietnamese; 181 are of unknown Asian/Pacific Islander ethnicity.

2. AI/AN=American Indian/Alaska Native.

3. Total includes persons who have multiple races/ethnicities or have missing information on race/ethnicity.

TABLE 3. CUMULATIVE ADULT/ADOLESCENT CASES OF AIDS BY GENDER, EXPOSURE CATEGORY, AND RACE/ETHNICITY
 REPORTED BY DECEMBER 31, 2009
 LOS ANGELES COUNTY

Adult/Adolescent Exposure Category (1)	Race/Ethnicity					Total (3) No. (%)
	White No. (%)	Black No. (%)	Hispanic No. (%)	Asian/PI No. (%)	AI/AN (2) No. (%)	
MALE						
Male-male sexual contact	19854 (83)	6041 (64)	11442 (70)	938 (77)	133 (70)	38426 (75)
Injection drug user (IDU)	788 (3)	915 (10)	856 (5)	17 (1)	10 (5)	2586 (5)
Male-male sexual contact/IDU	1932 (8)	904 (10)	960 (6)	41 (3)	33 (17)	3871 (8)
Hemophilia or coagulation disorder	99 (<1)	23 (<1)	45 (<1)	8 (1)	<5 (-)	175 (<1)
Heterosexual contact (4)	152 (1)	274 (3)	461 (3)	23 (2)	<5 (-)	910 (2)
Transfusion recipient (5)	126 (1)	39 (<1)	69 (<1)	17 (1)	<5 (-)	252 (<1)
Mother with/at risk for HIV	<5 (-)	6 (<1)	7 (<1)	<5 (-)	<5 (-)	17 (<1)
Other/Undetermined	881 (4)	1237 (13)	2567 (16)	175 (14)	12 (6)	4874 (10)
Male subtotal	23834	9439	16407	1220	190	51111
[% of subtotal]	[47]	[18]	[32]	[2]	[<1]	[100]
FEMALE						
Injection drug user (IDU)	337 (34)	466 (26)	248 (14)	13 (11)	12 (40)	1077 (23)
Hemophilia or coagulation disorder	10 (1)	6 (<1)	<5 (-)	<5 (-)	<5 (-)	18 (<1)
Heterosexual contact (4)	385 (39)	732 (41)	931 (51)	58 (49)	9 (30)	2115 (45)
Transfusion recipient (5)	70 (7)	46 (3)	69 (4)	12 (10)	<5 (-)	198 (4)
Mother with/at risk for HIV	<5 (-)	<5 (-)	7 (<1)	<5 (-)	<5 (-)	13 (<1)
Other/Undetermined	185 (19)	521 (29)	556 (31)	35 (29)	8 (27)	1305 (28)
Female subtotal	988	1775	1813	119	30	4726
[% of subtotal]	[21]	[38]	[38]	[3]	[1]	[100]
BOTH						
Male-male sexual contact	19854 (80)	6041 (54)	11442 (63)	938 (70)	133 (60)	38426 (69)
Injection drug user (IDU)	1125 (5)	1381 (12)	1104 (6)	30 (2)	22 (10)	3663 (7)
Male-male sexual contact/IDU	1932 (8)	904 (8)	960 (5)	41 (3)	33 (15)	3871 (7)
Hemophilia or coagulation disorder	109 (<1)	29 (<1)	47 (<1)	8 (1)	<5 (-)	193 (<1)
Heterosexual contact (4)	537 (2)	1006 (9)	1392 (8)	81 (6)	9 (4)	3025 (5)
Transfusion recipient (5)	196 (1)	85 (1)	138 (1)	29 (2)	<5 (-)	450 (1)
Mother with/at risk for HIV	<5 (-)	10 (<1)	14 (<1)	<5 (-)	<5 (-)	30 (<1)
Other/Undetermined	1066 (4)	1758 (16)	3123 (17)	210 (16)	20 (9)	6179 (11)
Total	24822	11214	18220	1339	220	55837
[% of total]	[44]	[20]	[33]	[2]	[<1]	[100]

1. Exposure categories are ordered hierarchically. Except for the combination listed, cases with multiple exposure categories are included in the category listed first.
2. AI/AN=American Indian/Alaska Native.
3. Total includes persons who have multiple races/ethnicities or have missing information on race/ethnicity.
4. Heterosexual contact with a person who is HIV-infected or at increased risk for HIV.
5. Limited to persons who received blood transfusion no later than 1985 or persons who had been investigated and confirmed as having received transfusion of contaminated blood after 1985.

TABLE 4. ANNUAL CASES OF AIDS AND RATES PER 100,000 (1) BY GENDER, YEAR OF DIAGNOSIS, AND RACE/ETHNICITY
 REPORTED BY DECEMBER 31, 2009
 LOS ANGELES COUNTY

Year of Diagnosis	Race/Ethnicity					Total (2) No. (Rate)
	White No. (Rate)	Black No. (Rate)	Hispanic No. (Rate)	Asian/PI No. (Rate)	AI/AN No. (Rate)	
MALE						
2000	505 (33)	334 (76)	665 (31)	31 (5)	7 (51)	1542 (33)
2001	471 (30)	331 (75)	631 (28)	44 (7)	8 (58)	1485 (31)
2002	548 (35)	322 (73)	677 (30)	58 (10)	8 (57)	1613 (33)
2003	559 (36)	263 (60)	637 (27)	54 (9)	8 (55)	1521 (31)
2004	431 (28)	240 (55)	597 (25)	53 (8)	5 (34)	1326 (26)
2005	396 (26)	268 (61)	548 (23)	48 (7)	<5 (-)	1263 (25)
2006	400 (26)	231 (53)	511 (21)	50 (8)	<5 (-)	1196 (24)
2007 (3)	309 (20)	204 (46)	466 (19)	45 (7)	6 (40)	1030 (20)
2008 (3)	323 (21)	214 (49)	414 (17)	45 (7)	<5 (-)	998 (19)
2009 (3)	147 (9)	107 (24)	230 (9)	19 (3)	<5 (-)	505 (10)
Cumulative						
Male subtotal(4)	23859	9490	16466	1223	191	51250
FEMALE						
2000	45 (3)	83 (16)	102 (5)	<5 (-)	<5 (-)	235 (5)
2001	37 (2)	81 (16)	107 (5)	9 (1)	<5 (-)	236 (5)
2002	38 (2)	77 (15)	104 (5)	9 (1)	<5 (-)	230 (5)
2003	28 (2)	77 (15)	99 (4)	5 (1)	<5 (-)	210 (4)
2004	36 (2)	73 (14)	66 (3)	5 (1)	<5 (-)	182 (4)
2005	30 (2)	78 (15)	70 (3)	7 (1)	<5 (-)	186 (4)
2006	19 (1)	67 (13)	80 (3)	5 (1)	<5 (-)	174 (3)
2007 (3)	27 (2)	60 (12)	60 (2)	5 (1)	<5 (-)	153 (3)
2008 (3)	19 (1)	70 (14)	56 (2)	5 (1)	<5 (-)	150 (3)
2009 (3)	15 (1)	24 (5)	27 (1)	<5 (-)	<5 (-)	69 (1)
Cumulative						
Female subtotal(4)	1007	1813	1868	122	30	4841
BOTH						
2000	550 (18)	417 (44)	767 (18)	35 (3)	8 (29)	1777 (19)
2001	508 (16)	412 (43)	738 (17)	53 (4)	10 (35)	1721 (18)
2002	586 (19)	399 (42)	781 (17)	67 (5)	10 (34)	1843 (19)
2003	587 (19)	340 (36)	736 (16)	59 (5)	9 (30)	1731 (17)
2004	467 (15)	313 (33)	663 (14)	58 (4)	7 (23)	1508 (15)
2005	426 (14)	346 (37)	618 (13)	55 (4)	<5 (-)	1449 (14)
2006	419 (14)	298 (32)	591 (12)	55 (4)	7 (23)	1370 (13)
2007 (3)	336 (11)	264 (28)	526 (11)	50 (4)	7 (23)	1183 (11)
2008 (3)	342 (11)	284 (30)	470 (10)	50 (4)	<5 (-)	1148 (11)
2009 (3)	162 (5)	131 (14)	257 (5)	22 (2)	<5 (-)	574 (6)
Cumulative Total(4)						
	24866	11303	18334	1345	221	56091

1. Rates are based on population estimates for 2000-2008. Rates for 2009 are calculated using population estimates for 2008. Rates based on observations fewer than 20 may not be reliable (see Technical Notes, page 32).
2. Total includes persons who have multiple races/ethnicities or have missing information on race/ethnicity.
3. Data are provisional due to reporting delay.
4. Includes persons diagnosed since 1982.

TABLE 5. ANNUAL CASES OF AIDS BY GENDER, EXPOSURE CATEGORY, AND YEAR OF DIAGNOSIS, REPORTED BY DECEMBER 31, 2009, LOS ANGELES COUNTY

Exposure Category (1)	Year of Diagnosis									Cumulative 1982-2009 No. (%)
	2001 No. (%)	2002 No. (%)	2003 No. (%)	2004 No. (%)	2005 No. (%)	2006 No. (%)	2007(2) No. (%)	2008(2) No. (%)	2009(2) No. (%)	
MALE										
Male-male sexual contact	968 (65)	1076 (67)	1063 (70)	883 (67)	841 (67)	816 (68)	690 (67)	652 (65)	326 (65)	38426 (75)
Injection drug user (IDU)	90 (6)	81 (5)	65 (4)	61 (5)	54 (4)	37 (3)	24 (2)	17 (2)	13 (3)	2586 (5)
Male-male sexual contact/IDU	116 (8)	117 (7)	108 (7)	87 (7)	80 (6)	83 (7)	85 (8)	53 (5)	26 (5)	3871 (8)
Hemophilia or coagulation disorder	5 (<1)	<5 (-)	<5 (-)	<5 (-)	<5 (-)	<5 (-)	<5 (-)	<5 (-)	<5 (-)	181 (<1)
Heterosexual contact (3)	68 (5)	59 (4)	59 (4)	33 (2)	27 (2)	23 (2)	18 (2)	11 (1)	7 (1)	910 (2)
Transfusion recipient (4)	<5 (-)	<5 (-)	<5 (-)	<5 (-)	<5 (-)	<5 (-)	<5 (-)	<5 (-)	<5 (-)	293 (1)
Mother with/at risk for HIV	<5 (-)	<5 (-)	<5 (-)	<5 (-)	<5 (-)	5 (<1)	<5 (-)	<5 (-)	<5 (-)	102 (<1)
Other/Undetermined	232 (16)	273 (17)	223 (15)	259 (20)	258 (20)	231 (19)	209 (20)	264 (26)	132 (26)	4881 (10)
Male subtotal	1485	1613	1521	1326	1263	1196	1030	998	505	51250
[% of annual cases]	[86]	[88]	[88]	[88]	[87]	[87]	[87]	[87]	[88]	[91]
FEMALE										
Injection drug user (IDU)	46 (19)	47 (20)	26 (12)	30 (16)	32 (17)	25 (14)	12 (8)	15 (10)	9 (13)	1077 (22)
Hemophilia or coagulation disorder	<5 (-)	<5 (-)	<5 (-)	<5 (-)	<5 (-)	<5 (-)	<5 (-)	<5 (-)	<5 (-)	19 (<1)
Heterosexual contact (3)	98 (42)	90 (39)	97 (46)	69 (38)	78 (42)	59 (34)	66 (43)	51 (34)	21 (30)	2115 (44)
Transfusion recipient (4)	<5 (-)	<5 (-)	<5 (-)	<5 (-)	<5 (-)	<5 (-)	<5 (-)	<5 (-)	<5 (-)	215 (4)
Mother with/at risk for HIV	<5 (-)	<5 (-)	<5 (-)	<5 (-)	<5 (-)	<5 (-)	<5 (-)	<5 (-)	<5 (-)	107 (2)
Other/Undetermined	85 (36)	87 (38)	85 (40)	80 (44)	72 (39)	85 (49)	72 (47)	82 (55)	37 (54)	1308 (27)
Female subtotal	236	230	210	182	186	174	153	150	69	4841
[% of annual cases]	[14]	[12]	[12]	[12]	[13]	[13]	[13]	[13]	[12]	[9]
Total	1721	1843	1731	1508	1449	1370	1183	1148	574	56091

1. Exposure categories are ordered hierarchically, such that persons with multiple exposure categories are included in the category listed first.
2. Data are provisional due to reporting delay.
3. Heterosexual contact indicates contact with a person who is HIV-infected or at increased risk for HIV.
4. Limited to persons who received blood transfusion no later than 1985 or persons who had been investigated and confirmed as having received transfusion of contaminated blood after 1985.

TABLE 6. ANNUAL WHITE CASES OF AIDS BY GENDER, EXPOSURE CATEGORY, AND YEAR OF DIAGNOSIS, REPORTED BY DECEMBER 31, 2009, LOS ANGELES COUNTY

Exposure Category (1)	Year of Diagnosis									Cumulative 1982-2009 No. (%)
	2001 No. (%)	2002 No. (%)	2003 No. (%)	2004 No. (%)	2005 No. (%)	2006 No. (%)	2007(2) No. (%)	2008(2) No. (%)	2009(2) No. (%)	
MALE										
Male-male sexual contact	353 (75)	418 (76)	446 (80)	334 (77)	305 (77)	313 (78)	226 (73)	248 (77)	105 (71)	19854 (83)
Injection drug user (IDU)	28 (6)	21 (4)	19 (3)	20 (5)	20 (5)	11 (3)	8 (3)	7 (2)	<5 (-)	788 (3)
Male-male sexual contact/IDU	49 (10)	59 (11)	51 (9)	40 (9)	37 (9)	33 (8)	38 (12)	26 (8)	14 (10)	1932 (8)
Hemophilia or coagulation disorder	<5 (-)	<5 (-)	<5 (-)	<5 (-)	<5 (-)	<5 (-)	<5 (-)	<5 (-)	<5 (-)	102 (<1)
Heterosexual contact (3)	7 (1)	<5 (-)	<5 (-)	6 (1)	<5 (-)	<5 (-)	<5 (-)	<5 (-)	<5 (-)	152 (1)
Transfusion recipient (4)	<5 (-)	<5 (-)	<5 (-)	<5 (-)	<5 (-)	<5 (-)	<5 (-)	<5 (-)	<5 (-)	139 (1)
Mother with/at risk for HIV	<5 (-)	<5 (-)	<5 (-)	<5 (-)	<5 (-)	<5 (-)	<5 (-)	<5 (-)	<5 (-)	11 (<1)
Other/Undetermined	31 (7)	45 (8)	39 (7)	31 (7)	31 (8)	38 (10)	32 (10)	40 (12)	23 (16)	881 (4)
Male subtotal	471	548	559	431	396	400	309	323	147	23859
[% of annual cases]	[93]	[94]	[95]	[92]	[93]	[95]	[92]	[94]	[91]	[96]
FEMALE										
Injection drug user (IDU)	15 (41)	16 (42)	5 (18)	15 (42)	10 (33)	8 (42)	5 (19)	6 (32)	<5 (-)	337 (33)
Hemophilia or coagulation disorder	<5 (-)	<5 (-)	<5 (-)	<5 (-)	<5 (-)	<5 (-)	<5 (-)	<5 (-)	<5 (-)	10 (1)
Heterosexual contact (3)	12 (32)	9 (24)	8 (29)	11 (31)	8 (27)	7 (37)	7 (26)	5 (26)	8 (53)	385 (38)
Transfusion recipient (4)	<5 (-)	<5 (-)	<5 (-)	<5 (-)	<5 (-)	<5 (-)	<5 (-)	<5 (-)	<5 (-)	77 (8)
Mother with/at risk for HIV	<5 (-)	<5 (-)	<5 (-)	<5 (-)	<5 (-)	<5 (-)	<5 (-)	<5 (-)	<5 (-)	13 (1)
Other/Undetermined	8 (22)	13 (34)	14 (50)	10 (28)	10 (33)	<5 (-)	15 (56)	8 (42)	5 (33)	185 (18)
Female subtotal	37	38	28	36	30	19	27	19	15	1007
[% of annual cases]	[7]	[6]	[5]	[8]	[7]	[5]	[8]	[6]	[9]	[4]
Total	508	586	587	467	426	419	336	342	162	24866

1. Exposure categories are ordered hierarchically, such that persons with multiple exposure categories are included in the category listed first.
2. Data are provisional due to reporting delay.
3. Heterosexual contact indicates contact with a person who is HIV-infected or at increased risk for HIV.
4. Limited to persons who received blood transfusion no later than 1985 or persons who had been investigated and confirmed as having received transfusion of contaminated blood after 1985.

TABLE 7. ANNUAL BLACK CASES OF AIDS BY GENDER, EXPOSURE CATEGORY, AND YEAR OF DIAGNOSIS, REPORTED BY DECEMBER 31, 2009, LOS ANGELES COUNTY

Exposure Category (1)	Year of Diagnosis									Cumulative 1982-2009 No. (%)
	2001 No. (%)	2002 No. (%)	2003 No. (%)	2004 No. (%)	2005 No. (%)	2006 No. (%)	2007(2) No. (%)	2008(2) No. (%)	2009(2) No. (%)	
MALE										
Male-male sexual contact	192 (58)	188 (58)	162 (62)	136 (57)	151 (56)	142 (61)	129 (63)	127 (59)	65 (61)	6041 (64)
Injection drug user (IDU)	29 (9)	26 (8)	20 (8)	13 (5)	18 (7)	8 (3)	5 (2)	<5 (-)	5 (5)	915 (10)
Male-male sexual contact/IDU	28 (8)	24 (7)	18 (7)	20 (8)	14 (5)	24 (10)	17 (8)	10 (5)	5 (5)	904 (10)
Hemophilia or coagulation disorder	<5 (-)	<5 (-)	<5 (-)	<5 (-)	<5 (-)	<5 (-)	<5 (-)	<5 (-)	<5 (-)	23 (<1)
Heterosexual contact (3)	19 (6)	9 (3)	16 (6)	7 (3)	8 (3)	9 (4)	7 (3)	5 (2)	<5 (-)	274 (3)
Transfusion recipient (4)	<5 (-)	<5 (-)	<5 (-)	<5 (-)	<5 (-)	<5 (-)	<5 (-)	<5 (-)	<5 (-)	49 (1)
Mother with/at risk for HIV	<5 (-)	<5 (-)	<5 (-)	<5 (-)	<5 (-)	<5 (-)	<5 (-)	<5 (-)	<5 (-)	44 (<1)
Other/Undetermined	59 (18)	72 (22)	46 (17)	63 (26)	76 (28)	47 (20)	46 (23)	69 (32)	29 (27)	1240 (13)
Male subtotal	331	322	263	240	268	231	204	214	107	9490
[% of annual cases]	[80]	[81]	[77]	[77]	[77]	[78]	[77]	[75]	[82]	[84]
FEMALE										
Injection drug user (IDU)	17 (21)	21 (27)	16 (21)	9 (12)	13 (17)	8 (12)	<5 (-)	5 (7)	5 (21)	466 (26)
Hemophilia or coagulation disorder	<5 (-)	<5 (-)	<5 (-)	<5 (-)	<5 (-)	<5 (-)	<5 (-)	<5 (-)	<5 (-)	6 (<1)
Heterosexual contact (3)	30 (37)	21 (27)	36 (47)	22 (30)	33 (42)	19 (28)	26 (43)	21 (30)	6 (25)	732 (40)
Transfusion recipient (4)	<5 (-)	<5 (-)	<5 (-)	<5 (-)	<5 (-)	<5 (-)	<5 (-)	<5 (-)	<5 (-)	49 (3)
Mother with/at risk for HIV	<5 (-)	<5 (-)	<5 (-)	<5 (-)	<5 (-)	<5 (-)	<5 (-)	<5 (-)	<5 (-)	39 (2)
Other/Undetermined	32 (40)	33 (43)	24 (31)	40 (55)	31 (40)	38 (57)	31 (52)	43 (61)	11 (46)	521 (29)
Female subtotal	81	77	77	73	78	67	60	70	24	1813
[% of annual cases]	[20]	[19]	[23]	[23]	[23]	[22]	[23]	[25]	[18]	[16]
Total	412	399	340	313	346	298	264	284	131	11303

1. Exposure categories are ordered hierarchically, such that persons with multiple exposure categories are included in the category listed first.
2. Data are provisional due to reporting delay.
3. Heterosexual contact indicates contact with a person who is HIV-infected or at increased risk for HIV.
4. Limited to persons who received blood transfusion no later than 1985 or persons who had been investigated and confirmed as having received transfusion of contaminated blood after 1985.

TABLE 8. ANNUAL HISPANIC CASES OF AIDS BY GENDER, EXPOSURE CATEGORY AND YEAR OF DIAGNOSIS, REPORTED BY DECEMBER 31, 2009, LOS ANGELES COUNTY

Exposure Category (1)	Year of Diagnosis									Cumulative 1982-2009 No. (%)
	2001 No. (%)	2002 No. (%)	2003 No. (%)	2004 No. (%)	2005 No. (%)	2006 No. (%)	2007(2) No. (%)	2008(2) No. (%)	2009(2) No. (%)	
MALE										
Male-male sexual contact	383 (61)	433 (64)	407 (64)	377 (63)	351 (64)	329 (64)	304 (65)	246 (59)	145 (63)	11442 (69)
Injection drug user (IDU)	33 (5)	33 (5)	24 (4)	26 (4)	15 (3)	17 (3)	9 (2)	8 (2)	<5 (-)	856 (5)
Male-male sexual contact/IDU	37 (6)	27 (4)	38 (6)	23 (4)	25 (5)	26 (5)	29 (6)	16 (4)	7 (3)	960 (6)
Hemophilia or coagulation disorder	<5 (-)	<5 (-)	<5 (-)	<5 (-)	<5 (-)	<5 (-)	<5 (-)	<5 (-)	<5 (-)	48 (<1)
Heterosexual contact (3)	40 (6)	42 (6)	37 (6)	17 (3)	18 (3)	7 (1)	8 (2)	<5 (-)	<5 (-)	461 (3)
Transfusion recipient (4)	<5 (-)	<5 (-)	<5 (-)	<5 (-)	<5 (-)	<5 (-)	<5 (-)	<5 (-)	<5 (-)	85 (1)
Mother with/at risk for HIV	<5 (-)	<5 (-)	<5 (-)	<5 (-)	<5 (-)	<5 (-)	<5 (-)	<5 (-)	<5 (-)	43 (<1)
Other/Undetermined	135 (21)	139 (21)	130 (20)	153 (26)	139 (25)	129 (25)	115 (25)	141 (34)	72 (31)	2571 (16)
Male subtotal	631	677	637	597	548	511	466	414	230	16466
[% of annual cases]	[86]	[87]	[87]	[90]	[89]	[86]	[89]	[88]	[89]	[90]
FEMALE										
Injection drug user (IDU)	12 (11)	8 (8)	5 (5)	6 (9)	7 (10)	7 (9)	5 (8)	<5 (-)	<5 (-)	248 (13)
Hemophilia or coagulation disorder	<5 (-)	<5 (-)	<5 (-)	<5 (-)	<5 (-)	<5 (-)	<5 (-)	<5 (-)	<5 (-)	<5 (-)
Heterosexual contact (3)	51 (48)	57 (55)	47 (47)	34 (52)	32 (46)	30 (38)	31 (52)	22 (39)	6 (22)	931 (50)
Transfusion recipient (4)	<5 (-)	<5 (-)	<5 (-)	<5 (-)	<5 (-)	<5 (-)	<5 (-)	<5 (-)	<5 (-)	74 (4)
Mother with/at risk for HIV	<5 (-)	<5 (-)	<5 (-)	<5 (-)	<5 (-)	<5 (-)	<5 (-)	<5 (-)	<5 (-)	54 (3)
Other/Undetermined	41 (38)	37 (36)	47 (47)	25 (38)	30 (43)	41 (51)	22 (37)	30 (54)	19 (70)	559 (30)
Female subtotal	107	104	99	66	70	80	60	56	27	1868
[% of annual cases]	[14]	[13]	[13]	[10]	[11]	[14]	[11]	[12]	[11]	[10]
Total	738	781	736	663	618	591	526	470	257	18334

1. Exposure categories are ordered hierarchically, such that persons with multiple exposure categories are included in the category listed first.
2. Data are provisional due to reporting delay.
3. Heterosexual contact indicates contact with a person who is HIV-infected or at increased risk for HIV.
4. Limited to persons who received blood transfusion no later than 1985 or persons who had been investigated and confirmed as having received transfusion of contaminated blood after 1985.

TABLE 9. CUMULATIVE PEDIATRIC CASES OF AIDS BY EXPOSURE CATEGORY, AND RACE/ETHNICITY
 REPORTED BY DECEMBER 31, 2009
 LOS ANGELES COUNTY

Pediatric (<13 years) Exposure Category (1)	Race/Ethnicity				
	White No. (%)	Black No. (%)	Hispanic No. (%)	Other (2) No. (%)	Total No. (%)
Hemophilia/coagulation disorder	3 (7)	0 (0)	3 (3)	1 (14)	7 (3)
Mother with/at risk for HIV	21 (48)	73 (82)	83 (73)	2 (29)	179 (70)
Transfusion recipient (3)	20 (45)	13 (15)	21 (18)	4 (57)	58 (23)
Other/Undetermined	0 (0)	3 (3)	7 (6)	0 (0)	10 (4)
Total	44	89	114	7	254
[% of total]	[17]	[35]	[45]	[3]	[100]

TABLE 10. PEDIATRIC CASES OF AIDS BY RACE/ETHNICITY, EXPOSURE CATEGORY, AND YEAR OF DIAGNOSIS
 REPORTED BY DECEMBER 31, 2009
 LOS ANGELES COUNTY

Pediatric (<13 years)	Year of Diagnosis					
	Before 2005 No. (%)	2005 No. (%)	2006 No. (%)	2007 (4) No. (%)	2008 (4) No. (%)	2009 (4) No. (%)
RACE/ETHNICITY						
White	43 (17)	1 (50)	0 (-)	0 (0)	0 (0)	0 (-)
Black	87 (35)	0 (0)	0 (-)	1 (100)	1 (100)	0 (-)
Hispanic	113 (45)	1 (50)	0 (-)	0 (0)	0 (0)	0 (-)
Other (2)	7 (3)	0 (0)	0 (-)	0 (0)	0 (0)	0 (-)
EXPOSURE CATEGORY (1)						
Hemophilia/coagulation disorder	7 (3)	0 (0)	0 (-)	0 (0)	0 (0)	0 (-)
Mother with/at risk for HIV	175 (70)	2 (100)	0 (-)	1 (100)	1 (100)	0 (-)
Transfusion recipient (3)	58 (23)	0 (0)	0 (-)	0 (0)	0 (0)	0 (-)
Other/Undetermined	10 (4)	0 (0)	0 (-)	0 (0)	0 (0)	0 (-)
Total	250	2	0	1	1	0
[% of total]	[98]	[1]	[-]	[0]	[0]	[-]

1. Exposure categories are ordered hierarchically. Except for the combination listed, persons with multiple exposure categories are included in the category listed first.
2. Other includes Asian, Pacific Islander, American Indian and Alaskan Native.
3. Limited to persons who received blood transfusion no later than 1985 or persons who had been investigated and confirmed as having received transfusion of contaminated blood after 1985.
4. Data are provisional due to reporting delay.

TABLE 11. CUMULATIVE ADULT/ADOLESCENT AIDS INDICATOR CONDITIONS AT TIME OF DIAGNOSIS (1) BY GENDER
 REPORTED BY DECEMBER 31, 2009
 LOS ANGELES COUNTY

Indicator Condition (2)	Gender		Total No. (%)
	Male No. (%)	Female No. (%)	
Candidiasis of bronchi, trachea, or lungs	497 (1)	54 (1)	551 (1)
Candidiasis of esophagus	2509 (5)	289 (6)	2798 (5)
Carcinoma, invasive cervical	- (-)	25 (1)	25 (<1)
Coccidioidomycosis, disseminated or extrapulmonary	120 (<1)	9 (<1)	129 (<1)
Cryptococcosis, extrapulmonary	1749 (3)	101 (2)	1850 (3)
Cryptosporidiosis, chronic intestinal	879 (2)	34 (1)	913 (2)
Cytomegalovirus disease other than retinitis	1431 (3)	79 (2)	1510 (3)
Cytomegalovirus retinitis	947 (2)	51 (1)	998 (2)
HIV encephalopathy	1051 (2)	66 (1)	1117 (2)
Herpes simplex: chronic ulcers, pneumonitis or esophagitis	1471 (3)	148 (3)	1619 (3)
Histoplasmosis, disseminated or extrapulmonary	170 (<1)	12 (<1)	182 (<1)
Isosporiasis, chronic intestinal	160 (<1)	9 (<1)	169 (<1)
Kaposi's sarcoma	4838 (9)	33 (1)	4871 (9)
Lymphoma, Burkitt's	253 (<1)	16 (<1)	269 (<1)
Lymphoma, immunoblastic	715 (1)	28 (1)	743 (1)
Lymphoma, primary in brain	164 (<1)	<5 (-)	167 (<1)
Mycobacterium avium or M. kansasii, disseminated	1334 (3)	65 (1)	1399 (3)
M. tuberculosis, pulmonary	1205 (2)	144 (3)	1349 (2)
M. tuberculosis, disseminated or extrapulmonary	818 (2)	102 (2)	920 (2)
Mycobacterium, other or unidentified species	289 (1)	20 (<1)	309 (1)
Pneumocystis carinii pneumonia	12232 (24)	743 (16)	12975 (23)
Pneumonia, recurrent	248 (<1)	48 (1)	296 (1)
Progressive multifocal leukoencephalopathy	208 (<1)	7 (<1)	215 (<1)
Salmonella septicemia, recurrent	73 (<1)	5 (<1)	78 (<1)
Toxoplasmosis of the brain	1104 (2)	92 (2)	1196 (2)
Wasting syndrome	3164 (6)	240 (5)	3404 (6)
CD4 < 200ul	27892 (55)	3280 (69)	31172 (56)
Total	51110	4726	55836

1. The table provides only a minimum estimate of indicator conditions because date of diagnosis may be missing for some indicator conditions.
2. Persons may have more than one condition at time of AIDS diagnosis.

TABLE 12. ANNUAL CASES OF AIDS AND RATES PER 100,000 (1)
 BY SERVICE PLANNING AREA/HEALTH DISTRICT OF RESIDENCE, AND YEAR OF DIAGNOSIS
 REPORTED BY DECEMBER 31, 2009
 LOS ANGELES COUNTY

Service Planning Area/ Health District	Year of Diagnosis										Cumulative Total (3) No. (%)	
	2005		2006		2007 (2)		2008 (2)		2009 (2)			
	No.	(%) Rate	No.	(%) Rate	No.	(%) Rate	No.	(%) Rate	No.	(%) Rate		
Antelope Valley[1]	22	(2) 6	17	(1) 5	18	(2) 5	20	(2) 5	13	(2) 4	583	(1)
Antelope Valley	22	(2) 6	17	(1) 5	18	(2) 5	20	(2) 5	13	(2) 4	583	(1)
San Fernando[2]	189	(13) 9	176	(13) 8	154	(13) 7	152	(13) 7	62	(11) 3	7982	(14)
East Valley	58	(4) 13	62	(5) 14	54	(5) 12	55	(5) 12	17	(3) 4	3066	(5)
Glendale	18	(1) 5	33	(2) 9	19	(2) 5	15	(1) 4	8	(1) 2	1233	(2)
San Fernando	29	(2) 6	20	(1) 4	13	(1) 3	21	(2) 4	8	(1) 2	757	(1)
West Valley	84	(6) 10	61	(4) 7	68	(6) 8	61	(5) 7	29	(5) 3	2926	(5)
San Gabriel[3]	94	(6) 5	98	(7) 5	73	(6) 4	87	(8) 5	53	(9) 3	4141	(7)
Alhambra	12	(1) 3	14	(1) 4	9	(1) 3	9	(1) 2	10	(2) 3	702	(1)
El Monte	30	(2) 6	27	(2) 6	18	(2) 4	20	(2) 4	13	(2) 3	943	(2)
Foothill	12	(1) 4	14	(1) 4	10	(1) 3	18	(2) 6	<5	(-) -	677	(1)
Pasadena	8	(1) 5	17	(1) 12	10	(1) 7	14	(1) 9	8	(1) 5	742	(1)
Pomona	32	(2) 6	26	(2) 5	26	(2) 5	26	(2) 5	18	(3) 3	1077	(2)
Metro[4]	464	(32) 37	445	(32) 35	379	(32) 30	388	(34) 30	178	(31) 14	21787	(39)
Central	176	(12) 48	169	(12) 46	147	(12) 40	165	(14) 44	75	(13) 20	6602	(12)
Hollywood-Wilshire	239	(16) 44	233	(17) 43	189	(16) 35	168	(15) 31	80	(14) 15	12748	(23)
Northeast	49	(3) 14	43	(3) 12	43	(4) 12	55	(5) 15	23	(4) 6	2437	(4)
West[5]	65	(4) 10	67	(5) 11	62	(5) 10	42	(4) 7	25	(4) 4	3259	(6)
West	65	(4) 10	67	(5) 11	62	(5) 10	42	(4) 7	25	(4) 4	3259	(6)
South[6]	191	(13) 19	168	(12) 16	143	(12) 14	149	(13) 14	72	(13) 7	5682	(10)
Compton	31	(2) 11	24	(2) 8	30	(3) 10	30	(3) 10	8	(1) 3	974	(2)
South	41	(3) 22	28	(2) 15	26	(2) 14	30	(3) 16	14	(2) 7	946	(2)
Southeast	33	(2) 19	29	(2) 16	20	(2) 11	21	(2) 12	9	(2) 5	864	(2)
Southwest	86	(6) 23	87	(6) 23	67	(6) 17	68	(6) 17	41	(7) 10	2898	(5)
East[7]	90	(6) 7	82	(6) 6	66	(6) 5	77	(7) 6	45	(8) 3	3339	(6)
Bellflower	15	(1) 4	14	(1) 4	9	(1) 2	16	(1) 4	9	(2) 2	689	(1)
East Los Angeles	22	(2) 10	18	(1) 8	13	(1) 6	15	(1) 7	8	(1) 4	752	(1)
San Antonio	33	(2) 7	32	(2) 7	27	(2) 6	25	(2) 6	15	(3) 3	1190	(2)
Whittier	20	(1) 6	18	(1) 5	17	(1) 5	21	(2) 6	13	(2) 4	708	(1)
South Bay[8]	332	(23) 21	316	(23) 20	288	(24) 18	231	(20) 14	125	(22) 8	9160	(16)
Harbor	21	(1) 10	23	(2) 11	18	(2) 8	<5	(-) -	<5	(-) -	540	(1)
Inglewood	50	(3) 12	52	(4) 12	48	(4) 11	42	(4) 10	12	(2) 3	1694	(3)
Long Beach	233	(16) 47	220	(16) 45	200	(17) 40	170	(15) 34	99	(17) 20	5910	(11)
Torrance	28	(2) 6	21	(2) 4	22	(2) 5	15	(1) 3	10	(2) 2	1016	(2)
Total (4)	1449	(100) 14	1370	(100) 13	1183	(100) 11	1148	(100) 11	574	(100) 6	56091	(100)

1. Rates are based on population estimates from 2005-2008. Rates for 2009 are calculated using population estimates for 2008. Rates based on observations fewer than 20 may not be reliable (see Technical Notes, page 32).
2. Data are provisional due to reporting delay.
3. Cumulative total includes persons diagnosed since 1982.
4. Total includes persons with no information on Service Planning Area/Health District.

TABLE 13. ANNUAL CASES OF AIDS AND RATES PER 100,000 (1) BY CITY/AREA (2) OF RESIDENCE, AND YEAR OF DIAGNOSIS
TOP 35 CITIES (3) RANKED BY 2008 RATE, REPORTED BY DECEMBER 31, 2009
LOS ANGELES COUNTY

City/Area	Year of Diagnosis					Cumulative 1982-2009 No.
	2004 No. (Rate)	2005 No. (Rate)	2006 No. (Rate)	2007 (4) No. (Rate)	2008 (4) No. (Rate)	
West Hollywood	48 (127.1)	48 (127.2)	51 (136.3)	40 (106.8)	38 (101.0)	3173
Wholesale (5)	38 (65.4)	69 (117.5)	52 (87.7)	50 (84.0)	56 (92.7)	1426
Downtown	18 (79.9)	10 (44.1)	9 (39.5)	11 (48.1)	13 (56.1)	424
Hollywood	124 (50.8)	117 (47.5)	125 (50.5)	98 (39.7)	87 (35.1)	6613
Slvlke-chinatn	39 (46.3)	36 (42.3)	28 (32.7)	34 (40.0)	27 (31.5)	1936
Long Beach	232 (47.4)	221 (44.9)	191 (38.7)	163 (33.0)	149 (30.0)	5677
Miracle Mile S	12 (24.3)	11 (22.3)	15 (30.4)	14 (28.1)	14 (28.0)	666
Watts	11 (28.8)	11 (28.3)	9 (22.8)	5 (12.8)	10 (25.1)	215
Boyle Heights	18 (18.5)	20 (20.2)	15 (14.9)	14 (13.9)	24 (23.6)	574
Los Feliz	13 (29.8)	18 (41.0)	15 (34.0)	14 (31.7)	10 (22.3)	1267
Westmont-w Aths	8 (20.6)	9 (23.0)	5 (12.6)	7 (17.7)	8 (20.9)	197
S Vermont	22 (20.1)	27 (24.5)	20 (18.1)	14 (12.5)	23 (20.3)	683
Wilshir Ctr N	17 (20.2)	20 (23.4)	14 (16.2)	10 (11.6)	17 (19.3)	798
N Hollywood	27 (20.4)	31 (23.3)	26 (19.4)	21 (15.8)	23 (17.1)	1390
W Adms-expo Pk	22 (16.6)	26 (19.4)	28 (20.8)	17 (12.4)	23 (16.7)	904
Vermont Square	11 (14.6)	19 (25.0)	17 (22.2)	14 (18.1)	13 (16.5)	500
Palms	7 (11.6)	8 (13.2)	<5 (-)	9 (14.6)	10 (16.0)	298
Willowbrook	<5 (-)	8 (20.3)	<5 (-)	<5 (-)	6 (15.2)	164
Adams-la Brea	19 (33.1)	8 (13.8)	12 (20.6)	10 (17.0)	9 (15.1)	468
Studio City	7 (13.5)	5 (9.6)	8 (15.5)	11 (20.9)	8 (14.9)	796
Green Meadows	10 (16.6)	12 (19.7)	10 (16.2)	8 (13.1)	9 (14.6)	331
Westlake	29 (22.2)	18 (13.5)	30 (22.2)	17 (12.5)	19 (13.9)	1080
Crenshaw	18 (24.8)	16 (22.0)	17 (23.4)	16 (21.9)	10 (13.6)	690
Miracle Mile N	10 (23.2)	17 (39.5)	9 (21.0)	7 (16.0)	6 (13.5)	697
Highland Park	5 (7.8)	6 (9.3)	6 (9.2)	6 (9.1)	9 (13.4)	426
Centrl Av-s Pk	15 (11.9)	26 (20.2)	16 (12.2)	14 (10.8)	17 (12.8)	575
Venice	10 (26.2)	9 (23.6)	<5 (-)	8 (20.7)	5 (12.8)	439
Lincoln Hts	7 (14.2)	7 (14.0)	<5 (-)	<5 (-)	6 (11.6)	258
Inglewood	23 (19.6)	12 (10.2)	17 (14.4)	21 (17.7)	13 (10.9)	616
V Nys-sher Oks	18 (8.8)	32 (15.6)	29 (14.0)	26 (12.5)	22 (10.4)	1099
Pico Rivera	5 (7.3)	6 (8.8)	<5 (-)	<5 (-)	7 (10.2)	174
Pasadena	13 (9.1)	7 (4.9)	16 (11.2)	8 (5.6)	14 (9.6)	709
Pacoima	7 (5.9)	12 (9.9)	8 (6.5)	<5 (-)	12 (9.5)	324
Compton	11 (11.8)	11 (11.7)	9 (9.5)	13 (13.7)	9 (9.5)	354
El Sereno	<5 (-)	5 (9.5)	<5 (-)	<5 (-)	5 (9.2)	221

1. Rates are based on population estimates for 2004-2008. Rates based on observations fewer than 20 may not be reliable (see Technical Notes, page 32).
2. The city of Los Angeles is broken down into "areas" or geographic units with more than 15,000 residents. Cities and areas are approximately defined by aggregating the associated census tracts based on the location of their centroid.
3. Includes cities and areas that had more than 15,000 residents and at least 5 persons diagnosed with AIDS in 2008.
4. Data are provisional due to reporting delay.
5. Includes persons diagnosed with AIDS during incarceration at Los Angeles County Central Jail.

TABLE 14. REPORTED NUMBER AND RATES PER 100,000 (1) FOR PERSONS DIAGNOSED WITH AIDS AND PERSONS LIVING WITH AIDS AS OF DECEMBER 31, 2009
BY GENDER, AGE, RACE/ETHNICITY AND EXPOSURE CATEGORY, REPORTED BY DECEMBER 31, 2009, LOS ANGELES COUNTY

	Male			Female			Total								
	Year 2008(2)		Living(2)	Year 2008(2)		Living(2)	Year 2008(2)		Living(2)	Cumulative(3)					
	No. (%)	Rate	No. (%)	Rate	No. (%)	Rate	No. (%)	Rate	No. (%)	Rate					
AGE GROUP (4)															
<13	<5 (-)	-	9 (<1)	1	139 (<1)	<5 (-)	-	5 (<1)	1	115 (2)	<5 (-)	-	14 (<1)	1	254 (<1)
13-19	5 (1)	1	27 (<1)	5	220 (<1)	<5 (-)	-	25 (1)	5	72 (1)	7 (1)	1	52 (<1)	5	292 (1)
20-29	171 (17)	22	669 (3)	87	8119 (16)	21 (14)	3	123 (5)	17	977 (20)	192 (17)	13	792 (3)	53	9096 (16)
30-39	321 (32)	40	3253 (15)	406	22337 (44)	32 (21)	4	535 (20)	69	1720 (36)	353 (31)	22	3788 (15)	240	24057 (43)
40-49	335 (34)	43	9406 (43)	1197	13963 (27)	49 (33)	6	1047 (39)	135	1185 (24)	384 (33)	25	10453 (42)	669	15148 (27)
50-59	139 (14)	23	6284 (29)	1062	4908 (10)	33 (22)	5	672 (25)	106	527 (11)	172 (15)	14	6956 (28)	569	5435 (10)
60+	27 (3)	4	2281 (10)	350	1564 (3)	12 (8)	1	307 (11)	36	245 (5)	39 (3)	3	2588 (11)	172	1809 (3)
RACE/ETHNICITY															
White	323 (32)	21	8279 (38)	533	23859 (47)	19 (13)	1	474 (17)	30	1007 (21)	342 (30)	11	8753 (36)	280	24866 (44)
Black	214 (21)	49	4103 (19)	930	9490 (19)	70 (47)	14	974 (36)	193	1813 (37)	284 (25)	30	5077 (21)	536	11303 (20)
Hispanic	414 (41)	17	8757 (40)	351	16466 (32)	56 (37)	2	1173 (43)	48	1868 (39)	470 (41)	10	9930 (40)	202	18334 (33)
Asian/PI	45 (5)	7	696 (3)	105	1223 (2)	5 (3)	1	72 (3)	10	122 (3)	50 (4)	4	768 (3)	55	1345 (2)
AI/AN	<5 (-)	-	84 (<1)	651	191 (<1)	<5 (-)	-	21 (1)	151	30 (1)	<5 (-)	-	105 (<1)	391	221 (<1)
EXPOSURE CATEGORY (5)															
MSM	652 (65)		15947 (73)		38426 (75)	- (-)		- (-)		- (-)	652 (57)		15947 (65)		38426 (69)
IDU	17 (2)		859 (4)		2586 (5)	15 (10)		486 (18)		1077 (22)	32 (3)		1345 (5)		3663 (7)
MSM/IDU	53 (5)		1622 (7)		3871 (8)	- (-)		- (-)		- (-)	53 (5)		1622 (7)		3871 (7)
Hemophi/Transfusion(6)	<5 (-)		83 (<1)		474 (1)	<5 (-)		48 (2)		234 (5)	<5 (-)		131 (1)		708 (1)
Heterosexual contact	11 (1)		527 (2)		910 (2)	51 (34)		1289 (47)		2115 (44)	62 (5)		1816 (7)		3025 (5)
Mother w/at HIV risk	<5 (-)		52 (<1)		102 (<1)	<5 (-)		44 (2)		107 (2)	<5 (-)		96 (<1)		209 (<1)
Other/Undetermined	264 (26)		2839 (13)		4881 (10)	82 (55)		847 (31)		1308 (27)	346 (30)		3686 (15)		6189 (11)
Total (7)	998 [87]	19	21929 [89]	425	51250 [91]	150 [13]	3	2714 [11]	52	4841 [9]	1148 [100] 11	24643 [100] 237	56091 [100]		

1. Rates based on observations fewer than 20 may not be reliable(see Technical Notes, page 32).
2. Data are provisional due to reporting delay. 3. Include persons reported as of December 31, 2009.
4. Age distributions for year 2008 and cumulative cases are based on age at the time of AIDS diagnosis while the age distribution for persons living with AIDS is based on age as of December 31, 2009.
5. Rate for exposure category is not available, because denominator can only be estimated.
6. Limited to persons who received blood transfusion no later than 1985 or persons who had been investigated and confirmed as having received transfusion of contaminated blood after 1985.
7. Percent of total cases that are male and female is shown in this row. Total includes persons who have multiple races/ethnicities or have missing information on race/ethnicity.

TABLE 15. CUMULATIVE NUMBER OF PERSONS DIAGNOSED WITH AIDS BY GENDER, AGE, RACE/ETHNICITY, AND EXPOSURE CATEGORY FOR EACH SERVICE PLANNING AREA (SPA)
 REPORTED BY DECEMBER 31, 2009, LOS ANGELES COUNTY, 1982-2009

Service Planning Area	Antelope Valley No. (%)	San Fernando No. (%)	San Gabriel No. (%)	Metro No. (%)	West No. (%)	South No. (%)	East No. (%)	South Bay/LB No. (%)	Total (1) No. (%)
GENDER									
Male	492 (84)	7381 (92)	3638 (88)	20716 (95)	3049 (94)	4672 (82)	2929 (88)	8222 (90)	51250 (91)
Female	91 (16)	601 (8)	503 (12)	1071 (5)	210 (6)	1010 (18)	410 (12)	938 (10)	4841 (9)
AGE GROUP (2)									
<13	7 (1)	34 (<1)	32 (1)	54 (<1)	10 (<1)	45 (1)	29 (1)	42 (<1)	254 (<1)
13-19	6 (1)	32 (<1)	29 (1)	74 (<1)	7 (<1)	58 (1)	29 (1)	56 (1)	292 (1)
20-29	94 (16)	1163 (15)	731 (18)	3328 (15)	444 (14)	1124 (20)	668 (20)	1507 (16)	9096 (16)
30-39	223 (38)	3354 (42)	1718 (41)	9678 (44)	1449 (44)	2216 (39)	1380 (41)	3968 (43)	24057 (43)
40-49	163 (28)	2234 (28)	1053 (25)	6050 (28)	895 (27)	1465 (26)	785 (24)	2470 (27)	15148 (27)
50-59	64 (11)	879 (11)	395 (10)	2026 (9)	317 (10)	563 (10)	310 (9)	871 (10)	5435 (10)
60+	26 (4)	286 (4)	183 (4)	577 (3)	137 (4)	211 (4)	138 (4)	246 (3)	1809 (3)
RACE/ETHNICITY									
White	283 (49)	4694 (59)	1381 (33)	10956 (50)	2140 (66)	302 (5)	669 (20)	4347 (47)	24866 (44)
Black	153 (26)	730 (9)	676 (16)	3334 (15)	450 (14)	3536 (62)	191 (6)	2203 (24)	11303 (20)
Hispanic	136 (23)	2328 (29)	1854 (45)	6895 (32)	579 (18)	1805 (32)	2396 (72)	2309 (25)	18334 (33)
Asian/PI	9 (2)	196 (2)	212 (5)	496 (2)	73 (2)	23 (<1)	67 (2)	267 (3)	1345 (2)
AI/AN	<5 (-)	27 (<1)	15 (<1)	96 (<1)	16 (<1)	15 (<1)	16 (<1)	34 (<1)	221 (<1)
EXPOSURE CATEGORY									
MSM	268 (46)	5593 (70)	2495 (60)	16477 (76)	2451 (75)	2846 (50)	1967 (59)	6230 (68)	38426 (69)
IDU	86 (15)	476 (6)	360 (9)	931 (4)	161 (5)	597 (11)	269 (8)	769 (8)	3663 (7)
MSM/IDU	52 (9)	455 (6)	238 (6)	1658 (8)	184 (6)	350 (6)	186 (6)	724 (8)	3871 (7)
Hemophi/Transfusion (3)	17 (3)	134 (2)	85 (2)	118 (1)	59 (2)	88 (2)	83 (2)	120 (1)	708 (1)
Heterosexual contact	60 (10)	397 (5)	310 (7)	604 (3)	123 (4)	604 (11)	256 (8)	666 (7)	3025 (5)
Mother w/at HIV risk	<5 (-)	22 (<1)	26 (1)	47 (<1)	9 (<1)	43 (1)	22 (1)	37 (<1)	209 (<1)
Other/Undetermined	97 (17)	905 (11)	627 (15)	1952 (9)	272 (8)	1154 (20)	556 (17)	614 (7)	6189 (11)
Total [% of total] (4)	583 [1]	7982 [14]	4141 [7]	21787 [39]	3259 [6]	5682 [10]	3339 [6]	9160 [16]	56091 [100]

1. Total includes persons with no information on SPA.
2. Age at time of diagnosis.
3. Limited to persons who received blood transfusion no later than 1985 or persons who had been investigated and confirmed as having received transfusion of contaminated blood after 1985.
4. Total includes persons who have multiple races/ethnicities or have missing information on race/ethnicity.

TABLE 16. NUMBER OF PERSONS DIAGNOSED WITH AIDS (1) AND RATE PER 100,000 (1,2) IN YEAR 2008
 BY GENDER, AGE, RACE/ETHNICITY, AND EXPOSURE CATEGORY FOR EACH SERVICE PLANNING AREA (SPA)
 REPORTED BY DECEMBER 31, 2009, LOS ANGELES COUNTY

Service Planning Area	Antelope Valley No. (%) Rate	San Fernando No. (%) Rate	San Gabriel No. (%) Rate	Metro No. (%) Rate	West No. (%) Rate	South No. (%) Rate	East No. (%) Rate	South Bay/LB No. (%) Rate	Total (3) No. (%) Rate
GENDER									
Male	16 (80) 9	135 (89) 12	74 (85) 8	358 (92) 55	36 (86) 11	110 (74) 21	65 (84) 9	202 (87) 25	998 (87) 19
Female	<5 (-) -	17 (11) 2	13 (15) 1	30 (8) 5	6 (14) 2	39 (26) 7	12 (16) 2	29 (13) 4	150 (13) 3
AGE GROUP									
<30	<5 (-) -	35 (23) 4	13 (15) 2	64 (16) 13	<5 (-) -	30 (20) 5	16 (21) 2	39 (17) 6	200 (17) 4
30-39	6 (30) 15	44 (29) 14	29 (33) 11	129 (33) 53	11 (26) 9	43 (29) 28	23 (30) 11	68 (29) 29	353 (31) 22
40-49	6 (30) 11	49 (32) 14	34 (39) 12	131 (34) 63	16 (38) 14	46 (31) 35	21 (27) 11	80 (35) 32	384 (33) 25
50+	8 (40) 9	24 (16) 4	11 (13) 2	64 (16) 20	12 (29) 6	30 (20) 15	17 (22) 5	44 (19) 10	211 (18) 8
RACE/ETHNICITY									
White	6 (30) 4	58 (38) 6	19 (22) 4	124 (32) 46	24 (57) 6	7 (5) 28	18 (23) 7	84 (36) 16	342 (30) 11
Black	9 (45) 18	16 (11) 21	15 (17) 18	85 (22) 119	8 (19) 19	78 (52) 23	<5 (-) -	70 (30) 28	284 (25) 30
Hispanic	<5 (-) -	69 (45) 8	45 (52) 5	159 (41) 22	10 (24) 9	64 (43) 10	54 (70) 6	65 (28) 11	470 (41) 10
Other (4)	<5 (-) -	9 (6) 4	8 (9) 2	20 (5) 9	<5 (-) -	<5 (-) -	<5 (-) -	12 (5) 5	52 (5) 4
EXPOSURE CATEGORY (5)									
MSM	<5 (-) -	79 (52)	42 (48)	237 (61)	27 (64)	62 (42)	41 (53)	159 (69)	652 (57)
IDU	<5 (-) -	<5 (-) -	<5 (-) -	9 (2)	<5 (-) -	<5 (-) -	<5 (-) -	9 (4)	32 (3)
MSM/IDU	<5 (-) -	8 (5)	5 (6)	19 (5)	<5 (-) -	<5 (-) -	<5 (-) -	13 (6)	53 (5)
Hemophi/Transfusion(6)	<5 (-) -	<5 (-) -	<5 (-) -	<5 (-) -	<5 (-) -	<5 (-) -	<5 (-) -	<5 (-) -	<5 (-) -
Heterosexual contact	<5 (-) -	11 (7)	<5 (-) -	<5 (-) -	<5 (-) -	15 (10)	<5 (-) -	23 (10)	62 (5)
Mother w/at HIV risk	<5 (-) -	<5 (-) -	<5 (-) -	<5 (-) -	<5 (-) -	<5 (-) -	<5 (-) -	<5 (-) -	<5 (-) -
Other/Undetermined	9 (45)	49 (32)	34 (39)	118 (30)	11 (26)	69 (46)	29 (38)	27 (12)	346 (30)
Total [% of total] (7)	20 [2] 5	152 [13] 7	87 [8] 5	388 [34] 30	42 [4] 7	149 [13] 14	77 [7] 6	231 [20] 14	1148 [100] 11

1. Data are provisional due to reporting delay.
2. Rates based on observations fewer than 20 may not be reliable. Rates are based on population estimates for 2008 (see Technical Notes, page 32).
3. Total includes persons with no information on SPA.
4. Other includes Asian, Pacific Islander, American Indian and Alaskan Native.
5. Rate for exposure category is not available, because denominator can only be estimated.
6. Limited to persons who received blood transfusion no later than 1985 or persons who had been investigated and confirmed as having received transfusion of contaminated blood after 1985.
7. Total includes persons who have multiple races/ethnicities or have missing information on race/ethnicity.

TABLE 17. PERSONS LIVING WITH AIDS AND RATE PER 100,000 (1) AT THE END OF CALENDAR YEAR, BY GENDER, AGE, RACE/ETHNICITY, AND EXPOSURE CATEGORY REPORTED BY DECEMBER 31, 2009, LOS ANGELES COUNTY

Calendar Year	2002			2003			2004			2005			2006			2007 (2)			2008 (2)			2009 (2)		
	No.	(%)	Rate	No.	(%)	Rate	No.	(%)	Rate	No.	(%)	Rate	No.	(%)	Rate	No.	(%)	Rate	No.	(%)	Rate	No.	(%)	Rate
GENDER																								
Male	16805	(89)	343	17775	(89)	359	18529	(89)	370	19297	(89)	382	20025	(89)	394	20775	(89)	406	21528	(89)	417	21929	(89)	425
Female	2005	(11)	40	2130	(11)	42	2227	(11)	43	2338	(11)	45	2438	(11)	47	2555	(11)	49	2668	(11)	51	2714	(11)	52
AGE GROUP (3)																								
<13	45	(<1)	2	42	(<1)	2	40	(<1)	2	36	(<1)	2	28	(<1)	1	21	(<1)	1	19	(<1)	1	14	(<1)	1
13-19	65	(<1)	6	67	(<1)	6	65	(<1)	6	55	(<1)	5	64	(<1)	6	60	(<1)	5	52	(<1)	5	52	(<1)	5
20-29	876	(5)	60	889	(4)	61	837	(4)	58	869	(4)	60	872	(4)	61	896	(4)	61	866	(4)	58	792	(3)	53
30-39	6107	(32)	373	5934	(30)	362	5601	(27)	344	5228	(24)	324	4867	(22)	305	4539	(19)	289	4216	(17)	267	3788	(15)	240
40-49	7673	(41)	531	8398	(42)	567	8997	(43)	595	9552	(44)	623	9955	(44)	644	10253	(44)	663	10503	(43)	672	10453	(42)	669
50-59	3122	(17)	310	3508	(18)	335	3975	(19)	364	4499	(21)	396	5075	(23)	432	5650	(24)	470	6321	(26)	517	6956	(28)	569
60+	922	(5)	71	1067	(5)	80	1241	(6)	91	1396	(6)	100	1602	(7)	112	1911	(8)	130	2219	(9)	148	2588	(11)	172
RACE/ETHNICITY																								
White	7088	(38)	226	7452	(37)	238	7688	(37)	246	7906	(37)	254	8121	(36)	263	8361	(36)	269	8637	(36)	276	8753	(36)	280
Black	3939	(21)	414	4103	(21)	432	4244	(20)	448	4445	(21)	472	4609	(21)	493	4784	(21)	507	4980	(21)	526	5077	(21)	536
Hispanic	7185	(38)	159	7704	(39)	167	8132	(39)	173	8545	(39)	178	8948	(40)	184	9356	(40)	192	9716	(40)	197	9930	(40)	202
Asian/PI	501	(3)	39	545	(3)	42	588	(3)	44	634	(3)	47	676	(3)	50	716	(3)	52	750	(3)	54	768	(3)	55
AI/AN	87	(<1)	300	91	(<1)	307	94	(<1)	311	95	(<1)	310	99	(<1)	319	103	(<1)	335	103	(<1)	384	105	(<1)	391
EXPOSURE CATEGORY (4)																								
MSM	12327	(66)		13049	(66)		13581	(65)		14134	(65)		14647	(65)		15170	(65)		15685	(65)		15947	(65)	
IDU	1268	(7)		1282	(6)		1292	(6)		1314	(6)		1314	(6)		1323	(6)		1333	(6)		1345	(5)	
MSM/IDU	1377	(7)		1424	(7)		1457	(7)		1481	(7)		1521	(7)		1578	(7)		1605	(7)		1622	(7)	
Hemophi/Transfusion (5)	141	(1)		137	(1)		137	(1)		136	(1)		131	(1)		131	(1)		130	(1)		131	(1)	
Heterosexual contact	1429	(8)		1551	(8)		1599	(8)		1664	(8)		1713	(8)		1773	(8)		1805	(7)		1816	(7)	
Mother w/at HIV risk	77	(<1)		80	(<1)		82	(<1)		84	(<1)		89	(<1)		94	(<1)		95	(<1)		96	(<1)	
Other/Undetermined	2191	(12)		2382	(12)		2608	(13)		2822	(13)		3048	(14)		3261	(14)		3543	(15)		3686	(15)	
Total (6)	18810	(100)	190	19905	(100)	198	20756	(100)	205	21635	(100)	212	22463	(100)	218	23330	(100)	226	24196	(100)	232	24643	(100)	237

1. Rates that are based on observations fewer than 20 may not be reliable(see Technical Notes, page 32).
2. Data are provisional due to reporting delay. Rates for 2009 are calculated using population estimates for 2008.
3. Age as of the end of year.
4. Rate for exposure category is not available, because denominator can only be estimated.
5. Limited to persons who received blood transfusion no later than 1985 or persons who had been investigated and confirmed as having received transfusion of contaminated blood after 1985.
6. Total includes persons who have multiple races/ethnicities or have missing information on race/ethnicity.

TABLE 18. PERSONS LIVING WITH AIDS AND RATE PER 100,000 (1) AS OF DECEMBER 31, 2009
 BY SERVICE PLANNING AREA, GENDER, AGE, RACE/ETHNICITY, AND EXPOSURE CATEGORY
 REPORTED BY DECEMBER 31, 2009, LOS ANGELES COUNTY

Service Planning Area	Antelope Valley No. (%) Rate	San Fernando No. (%) Rate	San Gabriel No. (%) Rate	Metro No. (%) Rate	West No. (%) Rate	South No. (%) Rate	East No. (%) Rate	South Bay/LB No. (%) Rate	Total (2) No. (%) Rate
GENDER									
Male	244 (82) 133	2950 (90) 271	1457 (85) 158	8650 (94)1321	1230 (91) 392	1982 (79) 384	1370 (85) 200	4004 (87) 503	21929 (89) 425
Female	52 (18) 28	338 (10) 31	261 (15) 27	601 (6) 97	116 (9) 35	527 (21) 98	240 (15) 34	576 (13) 70	2714 (11) 52
AGE GROUP									
<13	<5 (-) -	<5 (-) -	<5 (-) -	<5 (-) -	<5 (-) -	<5 (-) -	<5 (-) -	6 (<1) 2	14 (<1) 1
13-19	<5 (-) -	<5 (-) -	<5 (-) -	10 (<1) 8	<5 (-) -	15 (1) 11	7 (<1) 4	11 (<1) 6	52 (<1) 5
20-29	9 (3) 14	101 (3) 33	70 (4) 25	209 (2) 129	33 (2) 47	127 (5) 73	73 (5) 34	168 (4) 77	792 (3) 53
30-39	40 (14) 102	464 (14) 146	288 (17) 109	1322 (14) 543	159 (12) 132	460 (18) 300	294 (18) 144	757 (17) 320	3788 (15) 240
40-49	121 (41) 225	1361 (41) 393	709 (41) 259	4008 (43)1924	548 (41) 488	1018 (41) 779	677 (42) 361	2000 (44) 797	10453 (42) 669
50-59	84 (28) 189	977 (30) 349	455 (26) 193	2739 (30)1937	432 (32) 489	642 (26) 695	383 (24) 262	1227 (27) 631	6956 (28) 569
60+	41 (14) 93	379 (12) 114	191 (11) 64	960 (10) 548	173 (13) 143	246 (10) 229	176 (11) 95	411 (9) 170	2588 (11) 172
RACE/ETHNICITY									
White	116 (39) 68	1500 (46) 146	397 (23) 84	3750 (41)1395	792 (59) 195	103 (4) 414	234 (15) 96	1836 (40) 360	8753 (36) 280
Black	94 (32) 186	363 (11) 473	269 (16) 320	1572 (17)2199	205 (15) 485	1299 (52) 384	108 (7) 290	1160 (25) 471	5077 (21) 536
Hispanic	79 (27) 61	1286 (39) 152	912 (53) 107	3624 (39) 505	297 (22) 262	1092 (44) 163	1221 (76) 125	1407 (31) 229	9930 (40) 202
Asian/PI	6 (2) 44	120 (4) 52	130 (8) 28	257 (3) 121	42 (3) 51	8 (<1) 45	41 (3) 34	163 (4) 67	768 (3) 55
AI/AN	<5 (-) -	15 (<1) 254	9 (1) 206	44 (<1)1288	9 (1) 683	7 (<1) 478	6 (<1) 160	14 (<1) 315	105 (<1) 391
EXPOSURE CATEGORY (3)									
MSM	137 (46)	2102 (64)	962 (56)	6579 (71)	947 (70)	1187 (47)	937 (58)	3068 (67)	15947 (65)
IDU	34 (11)	173 (5)	125 (7)	323 (3)	65 (5)	189 (8)	101 (6)	329 (7)	1345 (5)
MSM/IDU	30 (10)	193 (6)	86 (5)	670 (7)	78 (6)	123 (5)	86 (5)	350 (8)	1622 (7)
Hemophi/Transfusion(4)	<5 (-)	25 (1)	14 (1)	24 (<1)	13 (1)	19 (1)	15 (1)	20 (<1)	131 (1)
Heterosexual contact	37 (13)	240 (7)	174 (10)	363 (4)	70 (5)	336 (13)	155 (10)	439 (10)	1816 (7)
Mother w/at HIV risk	<5 (-)	7 (<1)	8 (<1)	23 (<1)	<5 (-)	23 (1)	11 (1)	19 (<1)	96 (<1)
Other/Undetermined	56 (19)	548 (17)	349 (20)	1269 (14)	169 (13)	632 (25)	305 (19)	355 (8)	3686 (15)
Total [% of total] (5)	296 [1] 81	3288 [13]150	1718 [7] 91	9251 [38]726	1346 [5]208	2509 [10]238	1610 [7]116	4580 [19]283	24643 [100]237

1. Rates that are based on observations fewer than 20 may not be reliable. Rates are based on year 2008 population estimates (see Technical Notes, page 32).
2. Total includes persons with no information on SPA.
3. Rate for exposure category is not available, because denominator can only be estimated.
4. Limited to persons who received blood transfusion no later than 1985 or persons who had been investigated and confirmed as having received transfusion of contaminated blood after 1985.
5. Total includes persons who have multiple races/ethnicities or have missing information on race/ethnicity.

TABLE 19. RACIAL/ETHNIC- AND GENDER-SPECIFIC NUMBERS AND PERCENTAGE FOR PERSONS LIVING WITH AIDS AS OF DECEMBER 31, 2009(1)
 BY AGE, EXPOSURE CATEGORY, AND SERVICE PLANNING AREA
 REPORTED BY DECEMBER 31, 2009, LOS ANGELES COUNTY

	White			Black			Hispanic			Other (2)			Total (3)		
	Male	Female	All	Male	Female	All	Male	Female	All	Male	Female	All	Male	Female	All
	No. (%)	No. (%)	No. (%)	No. (%)	No. (%)	No. (%)	No. (%)	No. (%)	No. (%)	No. (%)	No. (%)	No. (%)	No. (%)	No. (%)	No. (%)
AGE GROUP (4)															
<13	<5 (-)	<5(-)	<5(-)	5 (<1)	<5(-)	6(<1)	<5 (-)	<5(-)	6(<1)	<5 (-)	<5(-)	<5(-)	9(<1)	5(<1)	14(<1)
13-19	<5 (-)	<5(-)	5(<1)	7 (<1)	9(1)	16(<1)	15 (<1)	15(1)	30(<1)	<5 (-)	<5(-)	<5(-)	27(<1)	25(1)	52(<1)
20-29	95 (1)	14(3)	109(1)	153 (4)	45(5)	198(4)	397 (5)	58(5)	455(5)	24 (3)	6(6)	30(3)	669(3)	123(5)	792(3)
30-39	698 (8)	60(13)	758(9)	523 (13)	180(18)	703(14)	1871 (21)	276(24)	2147(22)	161 (21)	19(20)	180(21)	3253(15)	535(20)	3788(15)
40-49	3440 (42)	194(41)	3634(42)	1709 (42)	395(41)	2104(41)	3948 (45)	427(36)	4375(44)	309 (40)	31(33)	340(39)	9406(43)	1047(39)	10453(42)
50-59	2893 (35)	131(28)	3024(35)	1286 (31)	263(27)	1549(31)	1891 (22)	256(22)	2147(22)	209 (27)	22(24)	231(26)	6284(29)	672(25)	6956(28)
60+	1149 (14)	73(15)	1222(14)	420 (10)	81(8)	501(10)	632 (7)	138(12)	770(8)	75 (10)	15(16)	90(10)	2281(10)	307(11)	2588(11)
EXPOSURE CATEGORY															
MSM	6743 (81)	- (-)	6743(77)	2563 (62)	- (-)	2563(50)	6051 (69)	- (-)	6051(61)	582 (75)	- (-)	582(67)	15947(73)	- (-)	15947(65)
IDU	259 (3)	162(34)	421(5)	265 (6)	194(20)	459(9)	321 (4)	118(10)	439(4)	14 (2)	12(13)	26(3)	859(4)	486(18)	1345(5)
MSM/IDU	740 (9)	- (-)	740(8)	378 (9)	- (-)	378(7)	466 (5)	- (-)	466(5)	37 (5)	- (-)	37(4)	1622(7)	- (-)	1622(7)
Hemophi/Transfusion (5)	32 (<1)	10(2)	42(<1)	11 (<1)	18(2)	29(1)	33 (<1)	18(2)	51(1)	7 (1)	<5(-)	9(1)	83(<1)	48(2)	131(1)
Heterosexual contact	56 (1)	197(42)	253(3)	143 (3)	418(43)	561(11)	312 (4)	628(54)	940(9)	16 (2)	46(49)	62(7)	527(2)	1289(47)	1816(7)
Mother w/at HIV risk	<5 (-)	<5(-)	6(<1)	20 (<1)	16(2)	36(1)	24 (<1)	25(2)	49(<1)	<5 (-)	<5(-)	5(1)	52(<1)	44(2)	96(<1)
Other/Undetermined	445 (5)	103(22)	548(6)	723 (18)	328(34)	1051(21)	1550 (18)	384(33)	1934(19)	120 (15)	32(34)	152(17)	2839(13)	847(31)	3686(15)
SERVICE PLANNING AREA															
Antelope Valley[1]	102 (1)	14(3)	116(1)	69 (2)	25(3)	94(2)	68 (1)	11(1)	79(1)	5 (1)	<5(-)	7(1)	244(1)	52(2)	296(1)
San Fernando[2]	1383 (17)	117(25)	1500(17)	295 (7)	68(7)	363(7)	1145 (13)	141(12)	1286(13)	123 (16)	12(13)	135(15)	2950(13)	338(12)	3288(13)
San Gabriel[3]	346 (4)	51(11)	397(5)	203 (5)	66(7)	269(5)	784 (9)	128(11)	912(9)	123 (16)	16(17)	139(16)	1457(7)	261(10)	1718(7)
Metro[4]	3654 (44)	96(20)	3750(43)	1392 (34)	180(18)	1572(31)	3318 (38)	306(26)	3624(37)	282 (36)	19(20)	301(35)	8650(40)	601(22)	9251(38)
West[5]	744 (9)	48(10)	792(9)	170 (4)	35(4)	205(4)	270 (3)	27(2)	297(3)	45 (6)	6(6)	51(6)	1230(6)	116(4)	1346(5)
South[6]	83 (1)	20(4)	103(1)	994 (24)	305(31)	1299(26)	896 (10)	196(17)	1092(11)	9 (1)	6(6)	15(2)	1982(9)	527(19)	2509(10)
East[7]	211 (3)	23(5)	234(3)	83 (2)	25(3)	108(2)	1038 (12)	183(16)	1221(12)	38 (5)	9(10)	47(5)	1370(6)	240(9)	1610(7)
South Bay/LB[8]	1733 (21)	103(22)	1836(21)	890 (22)	270(28)	1160(23)	1227 (14)	180(15)	1407(14)	154 (20)	23(25)	177(20)	4004(18)	576(21)	4580(19)
Total (6)	8279 [95]	474[5]	8753[100]	4103 [81]	974[19]	5077[100]	8757 [88]	1173[12]	9930[100]	780 [89]	93[11]	873[100]	21929[89]	2714[11]	24643[100]

1. Data are provisional due to reporting delay.
2. Other includes Asian, Pacific Islander, American Indian and Alaskan Native.
3. Total includes persons who have multiple races/ethnicities or have missing information on race/ethnicity or Service Planning Area.
4. Age as of December 31, 2009.
5. Limited to persons who received blood transfusion no later than 1985 or persons who had been investigated and confirmed as having received transfusion of contaminated blood after 1985.
6. Percent of total cases that are male and female is shown in this row.

TABLE 20. ANNUAL ADULT/ADOLESCENT CASES OF AIDS AND RATES PER 100,000 (1)
 BY GENDER, YEAR OF DIAGNOSIS, AND RACE/ETHNICITY
 REPORTED BY DECEMBER 31, 2009
 LOS ANGELES COUNTY

Year of Diagnosis	Race/Ethnicity					Total (2) No. (Rate)
	White No. (Rate)	Black No. (Rate)	Hispanic No. (Rate)	Asian/PI No. (Rate)	AI/AN No. (Rate)	
MALE						
2000	505 (38)	333 (99)	665 (43)	31 (6)	7 (64)	1541 (42)
2001	471 (35)	330 (97)	629 (39)	44 (9)	8 (72)	1482 (39)
2002	548 (41)	320 (93)	677 (41)	58 (11)	8 (69)	1611 (42)
2003	559 (42)	263 (76)	637 (38)	54 (10)	8 (67)	1521 (39)
2004	431 (32)	239 (69)	597 (34)	52 (10)	5 (40)	1324 (33)
2005	396 (30)	268 (78)	548 (31)	48 (9)	<5 (-)	1263 (31)
2006	400 (30)	231 (67)	511 (28)	50 (9)	<5 (-)	1196 (30)
2007 (3)	309 (23)	204 (58)	466 (25)	45 (8)	6 (47)	1030 (25)
2008 (3)	323 (24)	214 (60)	414 (22)	45 (8)	<5 (-)	998 (24)
2009 (3)	147 (11)	107 (30)	230 (12)	19 (3)	<5 (-)	505 (12)
Cumulative						
Male subtotal(4)	23834	9439	16407	1220	190	51111
FEMALE						
2000	45 (3)	83 (21)	100 (6)	<5 (-)	<5 (-)	233 (6)
2001	37 (3)	81 (20)	106 (7)	9 (2)	<5 (-)	235 (6)
2002	38 (3)	77 (19)	103 (6)	9 (2)	<5 (-)	229 (6)
2003	27 (2)	77 (19)	99 (6)	5 (1)	<5 (-)	209 (5)
2004	36 (3)	73 (18)	66 (4)	5 (1)	<5 (-)	182 (4)
2005	29 (2)	78 (19)	69 (4)	7 (1)	<5 (-)	184 (4)
2006	19 (1)	67 (16)	80 (4)	5 (1)	<5 (-)	174 (4)
2007 (3)	27 (2)	59 (14)	60 (3)	5 (1)	<5 (-)	152 (4)
2008 (3)	19 (1)	69 (16)	56 (3)	5 (1)	<5 (-)	149 (3)
2009 (3)	15 (1)	24 (6)	27 (1)	<5 (-)	<5 (-)	69 (2)
Cumulative						
Female subtotal(4)	988	1775	1813	119	30	4726
BOTH						
2000	550 (20)	416 (56)	765 (25)	35 (3)	8 (35)	1774 (23)
2001	508 (19)	411 (55)	735 (23)	53 (5)	10 (43)	1717 (22)
2002	586 (21)	397 (53)	780 (24)	67 (6)	10 (42)	1840 (23)
2003	586 (21)	340 (45)	736 (22)	59 (5)	9 (36)	1730 (22)
2004	467 (17)	312 (41)	663 (19)	57 (5)	7 (27)	1506 (19)
2005	425 (16)	346 (45)	617 (17)	55 (5)	<5 (-)	1447 (18)
2006	419 (16)	298 (39)	591 (16)	55 (5)	7 (26)	1370 (17)
2007 (3)	336 (12)	263 (34)	526 (14)	50 (4)	7 (26)	1182 (14)
2008 (3)	342 (12)	283 (36)	470 (13)	50 (4)	<5 (-)	1147 (14)
2009 (3)	162 (6)	131 (17)	257 (7)	22 (2)	<5 (-)	574 (7)
Cumulative Total(4)						
	24822	11214	18220	1339	220	55837

1. Rates are based on population estimates for 2000-2008. Rates for 2009 are calculated using population estimates for 2008. Rates based on observations fewer than 20 may not be reliable (see Technical Notes, page 32).
2. Total includes persons who have multiple races/ethnicities or have missing information on race/ethnicity.
3. Data are provisional due to reporting delay.
4. Includes persons diagnosed since 1982.

TABLE 21. ANNUAL DEATHS AMONG AIDS CASES BY AGE, RACE/ETHNICITY, GENDER, EXPOSURE CATEGORY, AND SERVICE PLANNING AREA
 REPORTED BY DECEMBER 31, 2009
 LOS ANGELES COUNTY

	Year of Death										Cumulative 1982-2009	
	2003		2004		2005		2006 (1)		2007(1)			
	No.	%	No.	%	No.	%	No.	%	No.	%	No.	%
AGE AT DEATH												
<13	<5	(-)	<5	(-)	<5	(-)	<5	(-)	<5	(-)	155	(<1)
13-19	<5	(-)	<5	(-)	<5	(-)	<5	(-)	<5	(-)	49	(<1)
20-29	23	(4)	20	(3)	13	(2)	17	(3)	13	(4)	2981	(9)
30-39	144	(23)	156	(24)	97	(17)	98	(18)	54	(17)	12269	(39)
40-49	256	(40)	253	(39)	270	(47)	200	(37)	131	(41)	9862	(31)
50-59	143	(22)	146	(22)	126	(22)	149	(27)	88	(28)	4334	(14)
60+	67	(11)	81	(12)	63	(11)	76	(14)	30	(9)	1798	(6)
RACE/ETHNICITY												
White	223	(35)	231	(35)	208	(36)	204	(38)	96	(30)	16113	(51)
Black	176	(28)	172	(26)	145	(25)	134	(25)	89	(28)	6226	(20)
Hispanic	217	(34)	235	(36)	205	(36)	188	(35)	118	(37)	8404	(27)
Other (2)	20	(3)	19	(3)	12	(2)	16	(3)	13	(4)	693	(2)
MALE EXPOSURE CATEGORY												
MSM	341	(54)	351	(53)	288	(51)	303	(56)	167	(53)	22479	(71)
IDU	46	(7)	54	(8)	42	(7)	36	(7)	18	(6)	1727	(5)
MSM-IDU	61	(10)	54	(8)	56	(10)	43	(8)	28	(9)	2249	(7)
Heterosexual contact	10	(2)	17	(3)	18	(3)	14	(3)	6	(2)	383	(1)
Other/undetermined (3)	93	(15)	96	(15)	91	(16)	72	(13)	61	(19)	2483	(8)
FEMALE EXPOSURE CATEGORY												
IDU	31	(5)	27	(4)	22	(4)	26	(5)	9	(3)	591	(2)
Heterosexual contact	24	(4)	37	(6)	22	(4)	19	(4)	18	(6)	826	(3)
Other/undetermined (3)	30	(5)	21	(3)	31	(5)	29	(5)	9	(3)	710	(2)
SERVICE PLANNING AREA												
Antelope Valley[1]	11	(2)	8	(1)	6	(1)	11	(2)	6	(2)	287	(1)
San Fernando[2]	72	(11)	80	(12)	81	(14)	69	(13)	35	(11)	4694	(15)
San Gabriel[3]	46	(7)	59	(9)	42	(7)	45	(8)	21	(7)	2423	(8)
Metro[4]	227	(36)	223	(34)	201	(35)	195	(36)	111	(35)	12536	(40)
West[5]	29	(5)	29	(4)	31	(5)	24	(4)	10	(3)	1913	(6)
South[6]	108	(17)	100	(15)	63	(11)	69	(13)	47	(15)	3173	(10)
East[7]	47	(7)	47	(7)	32	(6)	28	(5)	24	(8)	1729	(5)
South Bay/LB[8]	96	(15)	111	(17)	114	(20)	101	(19)	62	(20)	4580	(15)
Total (4)	636	(100)	657	(100)	570	(100)	542	(100)	316	(100)	31448	(100)

1. Data are provisional due to reporting delay.
2. Includes Asian, Pacific Islander, American Indian and Alaskan Native.
3. Includes hemophilia or coagulation disorder, transfusion recipient, mother with or at risk for HIV, confirmed other risk and risk not specified.
4. Total includes persons who have multiple races/ethnicities or have missing information on race/ethnicity or service planning area.

TABLE 22. PRELIMINARY NUMBER OF PERSONS LIVING WITH NON-AIDS HIV (1) AND RATE PER 100,000 (2) AS OF DECEMBER 31, 2009
BY SERVICE PLANNING AREA (SPA), GENDER, AGE, RACE/ETHNICITY AND EXPOSURE CATEGORY, LOS ANGELES COUNTY

Service Planning Area	Antelope Valley No. (%) Rate	San Fernando No. (%) Rate	San Gabriel No. (%) Rate	Metro No. (%) Rate	West No. (%) Rate	South No. (%) Rate	East No. (%) Rate	South Bay/LB No. (%) Rate	Total (3) No. (%) Rate
GENDER									
Male	168 (69) 91	2363 (87) 217	1040 (82) 113	7700 (92)1176	985 (89) 314	1582 (72) 306	910 (82) 133	2320 (85) 291	17098 (86) 331
Female	77 (31) 42	361 (13) 33	223 (18) 23	694 (8) 112	124 (11) 37	627 (28) 116	200 (18) 29	401 (15) 49	2709 (14) 52
AGE GROUP (4)									
<13	<5 (-) -	<5 (-) -	5 (<1) 2	5 (<1) 2	<5 (-) -	14 (1) 5	<5 (-) -	<5 (-) -	38 (<1) 2
13-19	<5 (-) -	22 (1) 10	12 (1) 6	51 (1) 43	12 (1) 24	47 (2) 34	13 (1) 8	32 (1) 18	194 (1) 17
20-29	34 (14) 54	345 (13) 114	201 (16) 71	934 (11) 578	110 (10) 156	449 (20) 258	213 (19) 99	384 (14) 177	2676 (14) 180
30-39	52 (21) 132	697 (26) 220	347 (27) 132	2196 (26) 902	242 (22) 201	612 (28) 399	322 (29) 158	727 (27) 308	5200 (26) 329
40-49	85 (35) 158	948 (35) 274	416 (33) 152	3233 (39)1552	422 (38) 376	633 (29) 485	338 (30) 180	931 (34) 371	7019 (35) 449
50-59	54 (22) 121	532 (20) 190	197 (16) 83	1570 (19)1111	233 (21) 264	333 (15) 360	175 (16) 120	468 (17) 241	3568 (18) 292
60+	15 (6) 34	176 (6) 53	85 (7) 29	405 (5) 231	88 (8) 73	121 (5) 113	46 (4) 25	175 (6) 72	1112 (6) 74
RACE/ETHNICITY									
White	84 (34) 49	1242 (46) 121	345 (27) 73	3367 (40)1252	635 (57) 156	114 (5) 458	163 (15) 67	993 (36) 195	6952 (35) 223
Black	80 (33) 158	368 (14) 480	160 (13) 190	1717 (20)2402	204 (18) 483	1215 (55) 359	89 (8) 239	785 (29) 319	4626 (23) 488
Hispanic	76 (31) 59	993 (36) 117	644 (51) 75	2841 (34) 396	221 (20) 195	854 (39) 127	821 (74) 84	819 (30) 133	7283 (37) 148
Asian/PI	<5 (-) -	101 (4) 44	103 (8) 22	233 (3) 110	42 (4) 51	11 (<1) 61	27 (2) 22	113 (4) 46	634 (3) 45
AI/AN	<5 (-) -	9 (<1) 152	<5 (-) -	34 (<1) 996	5 (<1) 380	9 (<1) 614	5 (<1) 133	10 (<1) 225	77 (<1) 287
EXPOSURE CATEGORY (5)									
MSM	92 (38)	1774 (65)	733 (58)	5712 (68)	783 (71)	949 (43)	666 (60)	1776 (65)	12502 (63)
IDU	22 (9)	68 (2)	58 (5)	184 (2)	26 (2)	109 (5)	41 (4)	141 (5)	650 (3)
MSM/IDU	15 (6)	111 (4)	41 (3)	413 (5)	50 (5)	45 (2)	29 (3)	108 (4)	814 (4)
Hemophi/Transfusion(6)	<5 (-)	10 (<1)	8 (1)	12 (<1)	<5 (-)	<5 (-)	8 (1)	7 (<1)	51 (<1)
Heterosexual contact	23 (9)	139 (5)	104 (8)	207 (2)	36 (3)	236 (11)	81 (7)	258 (9)	1084 (5)
Mother w/at HIV risk	<5 (-)	18 (1)	16 (1)	39 (<1)	16 (1)	46 (2)	14 (1)	27 (1)	181 (1)
Other/Undetermined	87 (36)	604 (22)	303 (24)	1827 (22)	197 (18)	821 (37)	271 (24)	404 (15)	4525 (23)
Total [% of total] (7)	245 [1] 67	2724 [14]124	1263 [6] 67	8394 [42]659	1109 [6]172	2209 [11]209	1110 [6] 80	2721 [14]168	19807 [100]190

1. Based on preliminary number of persons reported with HIV during code-based system from July 1, 2002 to April 17, 2006 and those reported by name from April 17, 2006 to December 31, 2009.
2. Rates are based on year 2008 population estimates. Rates that are based on observations fewer than 20 may not be reliable (see Technical Notes, page 32).
3. Total includes persons with no information on SPA.
4. Age as of December 31, 2009.
5. Rate for exposure category is not available, because denominator can only be estimated.
6. Limited to persons who received blood transfusion no later than 1985 or persons who had been investigated and confirmed as having received transfusion of contaminated blood after 1985.
7. Total includes persons who have multiple races/ethnicities or have missing information on race/ethnicity.

TABLE 23. PRELIMINARY NUMBER OF PERSONS LIVING WITH HIV(1)/AIDS AND RATE PER 100,000 (2) AS OF DECEMBER 31, 2009
BY SERVICE PLANNING AREA (SPA), GENDER, AGE, RACE/ETHNICITY AND EXPOSURE CATEGORY, LOS ANGELES COUNTY

Service Planning Area	Antelope Valley No. (%) Rate	San Fernando No. (%) Rate	San Gabriel No. (%) Rate	Metro No. (%) Rate	West No. (%) Rate	South No. (%) Rate	East No. (%) Rate	South Bay/LB No. (%) Rate	Total (3) No. (%) Rate
GENDER									
Male	412 (76) 224	5313 (88) 488	2497 (84) 270	16350 (93) 2498	2215 (90) 707	3564 (76) 690	2280 (84) 332	6324 (87) 794	39027 (88) 756
Female	129 (24) 71	699 (12) 64	484 (16) 50	1295 (7) 209	240 (10) 72	1154 (24) 214	440 (16) 63	977 (13) 119	5423 (12) 103
AGE GROUP (4)									
<13	<5 (-) -	6 (<1) 2	7 (<1) 2	8 (<1) 4	<5 (-) -	15 (<1) 6	<5 (-) -	10 (<1) 3	52 (<1) 3
13-19	5 (1) 10	26 (<1) 12	15 (1) 7	61 (<1) 51	13 (1) 27	62 (1) 45	20 (1) 12	43 (1) 24	246 (1) 22
20-29	43 (8) 68	446 (7) 148	271 (9) 96	1143 (6) 707	143 (6) 202	576 (12) 331	286 (11) 132	552 (8) 255	3468 (8) 233
30-39	92 (17) 234	1161 (19) 366	635 (21) 241	3518 (20) 1446	401 (16) 333	1072 (23) 699	616 (23) 302	1484 (20) 628	8988 (20) 569
40-49	206 (38) 383	2309 (38) 667	1125 (38) 411	7241 (41) 3477	970 (40) 865	1651 (35)1264	1015 (37) 542	2931 (40)1168	17472 (39)1118
50-59	138 (26) 310	1509 (25) 539	652 (22) 276	4309 (24) 3048	665 (27) 753	975 (21)1055	558 (21) 382	1695 (23) 871	10524 (24) 860
60+	56 (10) 128	555 (9) 167	276 (9) 93	1365 (8) 779	261 (11) 216	367 (8) 342	222 (8) 120	586 (8) 242	3700 (8) 246
RACE/ETHNICITY									
White	200 (37) 117	2742 (46) 267	742 (25) 158	7117 (40) 2647	1427 (58) 351	217 (5) 872	397 (15) 162	2829 (39) 555	15705 (35) 503
Black	174 (32) 345	731 (12) 953	429 (14) 510	3289 (19) 4601	409 (17) 968	2514 (53) 743	197 (7) 529	1945 (27) 790	9703 (22)1025
Hispanic	155 (29) 119	2279 (38) 269	1556 (52) 182	6465 (37) 901	518 (21) 458	1946 (41) 290	2042 (75) 209	2226 (30) 362	17213 (39) 349
Asian/PI	10 (2) 73	221 (4) 95	233 (8) 50	490 (3) 231	84 (3) 101	19 (<1) 106	68 (3) 56	276 (4) 113	1402 (3) 100
AI/AN	<5 (-) -	24 (<1) 406	12 (<1) 275	78 (<1) 2284	14 (1)1063	16 (<1)1092	11 (<1) 293	24 (<1) 540	182 (<1) 678
EXPOSURE CATEGORY (5)									
MSM	229 (42)	3876 (64)	1695 (57)	12291 (70)	1730 (70)	2136 (45)	1603 (59)	4844 (66)	28449 (64)
IDU	56 (10)	241 (4)	183 (6)	507 (3)	91 (4)	298 (6)	142 (5)	470 (6)	1995 (4)
MSM/IDU	45 (8)	304 (5)	127 (4)	1083 (6)	128 (5)	168 (4)	115 (4)	458 (6)	2436 (5)
Hemophi/Transfusion(6)	<5 (-)	35 (1)	22 (1)	36 (<1)	14 (1)	22 (<1)	23 (1)	27 (<1)	182 (<1)
Heterosexual contact	60 (11)	379 (6)	278 (9)	570 (3)	106 (4)	572 (12)	236 (9)	697 (10)	2900 (7)
Mother w/at HIV risk	5 (1)	25 (<1)	24 (1)	62 (<1)	20 (1)	69 (1)	25 (1)	46 (1)	277 (1)
Other/Undetermined	143 (26)	1152 (19)	652 (22)	3096 (18)	366 (15)	1453 (31)	576 (21)	759 (10)	8211 (18)
Total [% of total] (7)	541 [1]148	6012 [14]275	2981 [7]158	17645 [40]1386	2455 [6]380	4718 [11]447	2720 [6]196	7301 [16]451	44450 [100]427

1. Based on preliminary number of persons reported with HIV during code-based system from July 1, 2002 to April 17, 2006 and those reported by name from April 17, 2006 to December 31, 2009.
2. Rates are based on year 2008 population estimates. Rates that are based on observations fewer than 20 may not be reliable(see Technical Notes, page 32).
3. Total includes persons with no information on SPA. 4. Age as of December 31, 2009.
5. Rate for exposure category is not available, because denominator can only be estimated.
6. Limited to persons who received blood transfusion no later than 1985 or persons who had been investigated and confirmed as having received transfusion of contaminated blood after 1985.
7. Total includes cases who have multiple races/ethnicities or have missing information on race/ethnicity.

TABLE 24. RACIAL/ETHNIC- AND GENDER-SPECIFIC PRELIMINARY NUMBERS AND PERCENTAGE FOR PERSONS LIVING WITH HIV(1)/AIDS AS OF DECEMBER 31, 2009
 BY AGE, EXPOSURE CATEGORY, AND SERVICE PLANNING AREA
 REPORTED BY DECEMBER 31, 2009, LOS ANGELES COUNTY

	White			Black			Hispanic			Other (2)			Total (3)		
	Male	Female	All	Male	Female	All	Male	Female	All	Male	Female	All	Male	Female	All
	No. (%)	No. (%)	No. (%)	No. (%)	No. (%)	No. (%)	No. (%)	No. (%)	No. (%)	No. (%)	No. (%)	No. (%)	No. (%)	No. (%)	No. (%)
AGE GROUP (4)															
<13	<5 (-)	<5 (-)	<5 (-)	14 (<1)	<5 (-)	18(<1)	14 (<1)	14(1)	28(<1)	<5 (-)	<5 (-)	<5 (-)	31(<1)	21(<1)	52(<1)
13-19	23 (<1)	12(1)	35(<1)	49 (1)	43(2)	92(1)	56 (<1)	59(3)	115(1)	<5 (-)	<5 (-)	<5 (-)	129(<1)	117(2)	246(1)
20-29	522 (4)	49(5)	571(4)	765 (10)	177(9)	942(10)	1514 (10)	285(12)	1799(10)	118 (8)	13(7)	131(8)	2940(8)	528(10)	3468(8)
30-39	1927 (13)	162(18)	2089(13)	1273 (17)	452(23)	1725(18)	4068 (27)	621(27)	4689(27)	378 (27)	53(28)	431(27)	7689(20)	1299(24)	8988(20)
40-49	6176 (42)	357(40)	6533(42)	2966 (39)	700(35)	3666(38)	5885 (39)	728(32)	6613(38)	510 (37)	58(31)	568(36)	15614(40)	1858(34)	17472(39)
50-59	4457 (30)	216(24)	4673(30)	2012 (26)	478(24)	2490(26)	2575 (17)	401(17)	2976(17)	288 (21)	36(19)	324(20)	9386(24)	1138(21)	10524(24)
60+	1697 (11)	104(12)	1801(11)	622 (8)	148(7)	770(8)	808 (5)	185(8)	993(6)	99 (7)	24(13)	123(8)	3238(8)	462(9)	3700(8)
EXPOSURE CATEGORY															
MSM	12117 (82)	- (-)	12117(77)	4731 (61)	- (-)	4731(49)	10482 (70)	- (-)	10482(61)	1075 (77)	- (-)	1075(68)	28449(73)	- (-)	28449(64)
IDU	395 (3)	253(28)	648(4)	382 (5)	306(15)	688(7)	432 (3)	186(8)	618(4)	24 (2)	15(8)	39(2)	1233(3)	762(14)	1995(4)
MSM/IDU	1117 (8)	- (-)	1117(7)	571 (7)	- (-)	571(6)	685 (5)	- (-)	685(4)	61 (4)	- (-)	61(4)	2436(6)	- (-)	2436(5)
Hemophi/Transfusion (5)	42 (<1)	14(2)	56(<1)	15 (<1)	28(1)	43(<1)	42 (<1)	29(1)	71(<1)	9 (1)	<5 (-)	12(1)	108(<1)	74(1)	182(<1)
Heterosexual contact	96 (1)	331(37)	427(3)	240 (3)	691(35)	931(10)	421 (3)	1015(44)	1436(8)	25 (2)	81(43)	106(7)	782(2)	2118(39)	2900(7)
Mother w/at HIV risk	18 (<1)	10(1)	28(<1)	56 (1)	48(2)	104(1)	60 (<1)	75(3)	135(1)	6 (<1)	<5 (-)	10(1)	140(<1)	137(3)	277(1)
Other/Undetermined	1017 (7)	295(33)	1312(8)	1706 (22)	929(46)	2635(27)	2798 (19)	988(43)	3786(22)	197 (14)	84(45)	281(18)	5879(15)	2332(43)	8211(18)
SERVICE PLANNING AREA															
Antelope Valley[1]	161 (1)	39(4)	200(1)	119 (2)	55(3)	174(2)	124 (1)	31(1)	155(1)	8 (1)	<5 (-)	12(1)	412(1)	129(2)	541(1)
San Fernando[2]	2531 (17)	211(23)	2742(17)	581 (8)	150(7)	731(8)	1969 (13)	310(14)	2279(13)	219 (16)	26(14)	245(15)	5313(14)	699(13)	6012(14)
San Gabriel[3]	652 (4)	90(10)	742(5)	307 (4)	122(6)	429(4)	1318 (9)	238(10)	1556(9)	212 (15)	33(18)	245(15)	2497(6)	484(9)	2981(7)
Metro[4]	6919 (47)	198(22)	7117(45)	2868 (37)	421(21)	3289(34)	5863 (39)	602(26)	6465(38)	527 (38)	41(22)	568(36)	16350(42)	1295(24)	17645(40)
West[5]	1343 (9)	84(9)	1427(9)	324 (4)	85(4)	409(4)	462 (3)	56(2)	518(3)	83 (6)	15(8)	98(6)	2215(6)	240(4)	2455(6)
South[6]	177 (1)	40(4)	217(1)	1859 (24)	655(33)	2514(26)	1503 (10)	443(19)	1946(11)	20 (1)	15(8)	35(2)	3564(9)	1154(21)	4718(11)
East[7]	349 (2)	48(5)	397(3)	146 (2)	51(3)	197(2)	1716 (12)	326(14)	2042(12)	65 (5)	14(7)	79(5)	2280(6)	440(8)	2720(6)
South Bay/LB[8]	2639 (18)	190(21)	2829(18)	1483 (19)	462(23)	1945(20)	1940 (13)	286(12)	2226(13)	261 (19)	39(21)	300(19)	6324(16)	977(18)	7301(16)
Total (6)	14802[94]	903[6]	15705[100]	7701[79]	2002[21]	9703[100]	14920[87]	2293[13]	17213[100]	1397 [88]	187[12]	1584[100]	39027[88]	5423[12]	44450[100]

1. Based on preliminary number of persons reported with HIV during code-based system from July 1, 2002 to April 17, 2006 and those reported by name from April 17, 2006 to December 31, 2009.
2. Other includes Asian, Pacific Islander, American Indian and Alaskan Native.
3. Total includes persons who have multiple races/ethnicities or have missing information on race/ethnicity or Service Planning Area.
4. Age as of December 31, 2009.
5. Limited to persons who received blood transfusion no later than 1985 or persons who had been investigated and confirmed as having received transfusion of contaminated blood after 1985.
6. Percent of total cases that are male and female is shown in this row.

FIGURE 3. MALE ADULT/ADOLESCENT AIDS RATES BY RACE/ETHNICITY¹ AND YEAR OF DIAGNOSIS, LOS ANGELES COUNTY, 1992-2008

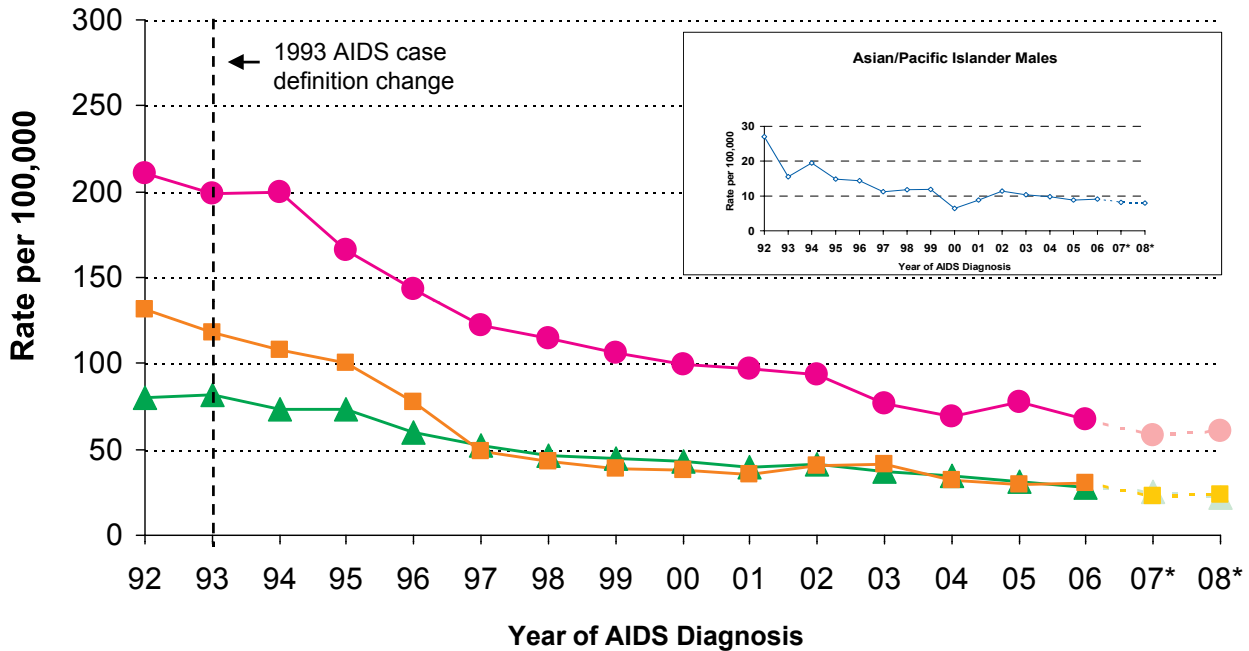
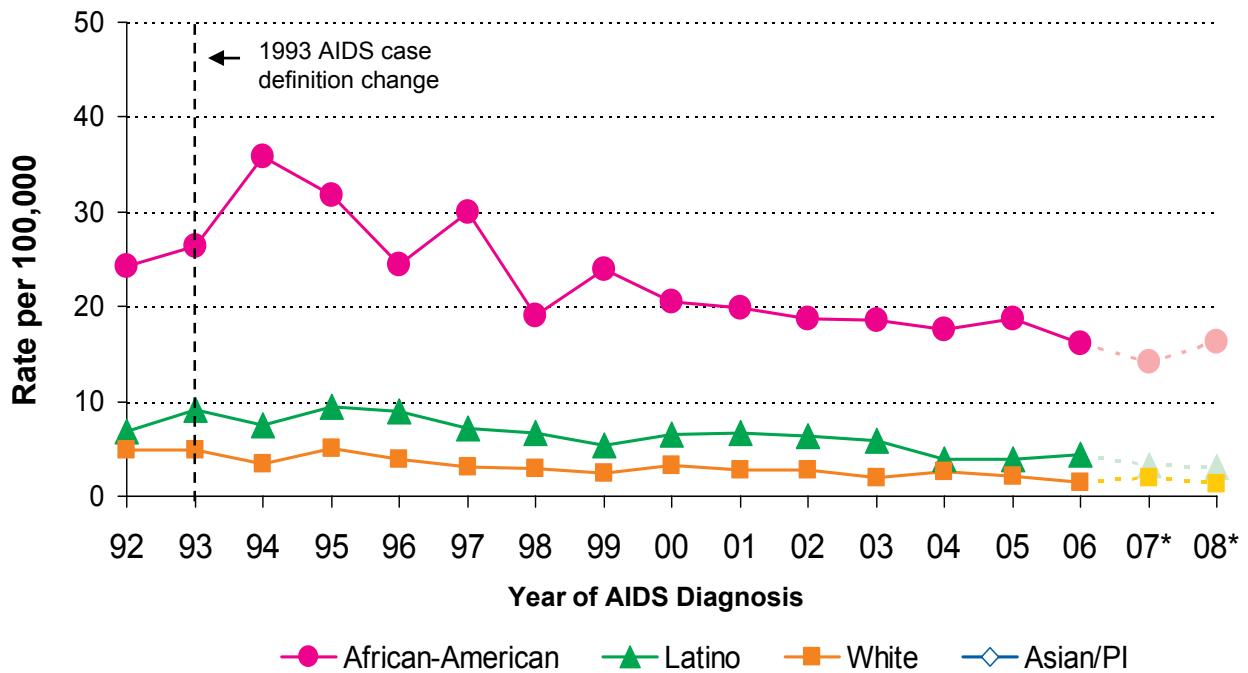


FIGURE 4. FEMALE ADULT/ADOLESCENT AIDS RATES BY RACE/ETHNICITY¹ AND YEAR OF DIAGNOSIS, LOS ANGELES COUNTY, 1992-2008



1. AIDS rates for Asian/Pacific Islander females, Native Americans and Alaskan Natives are not presented here because rates based on small numbers may result in unstable estimates.

* Data are provisional due to reporting delay.

FIGURE 5. PERCENT OF ADULT/ADOLESCENT AIDS CASES BY RACE/ETHNICITY* AND YEAR OF DIAGNOSIS, LOS ANGELES COUNTY, 1992-2009

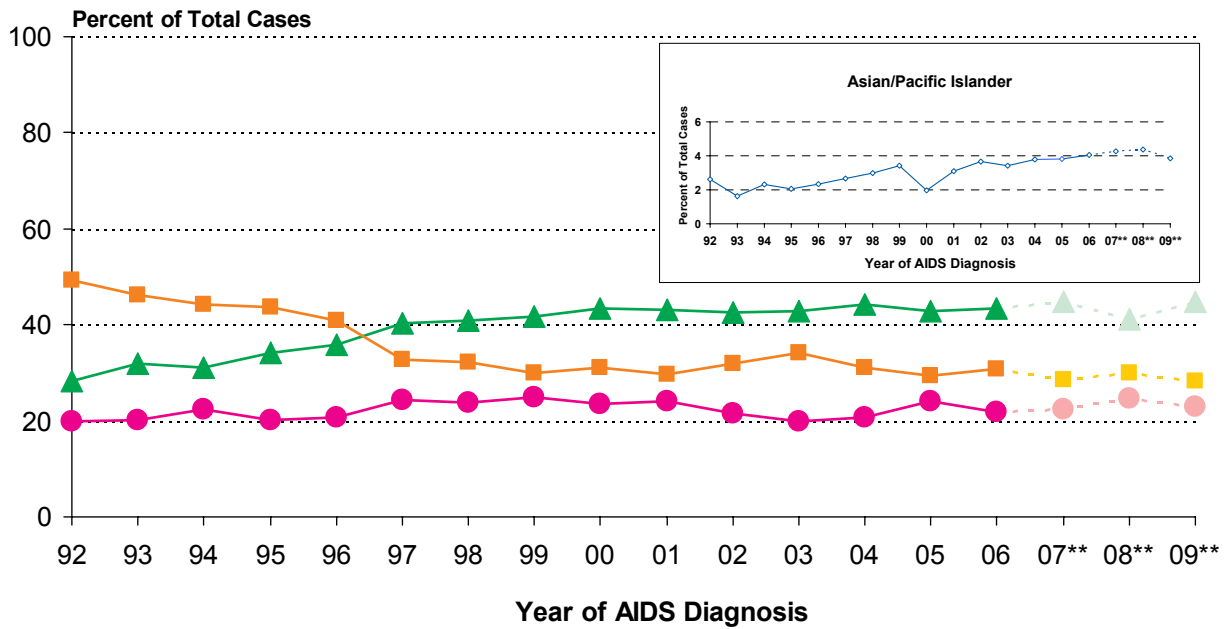
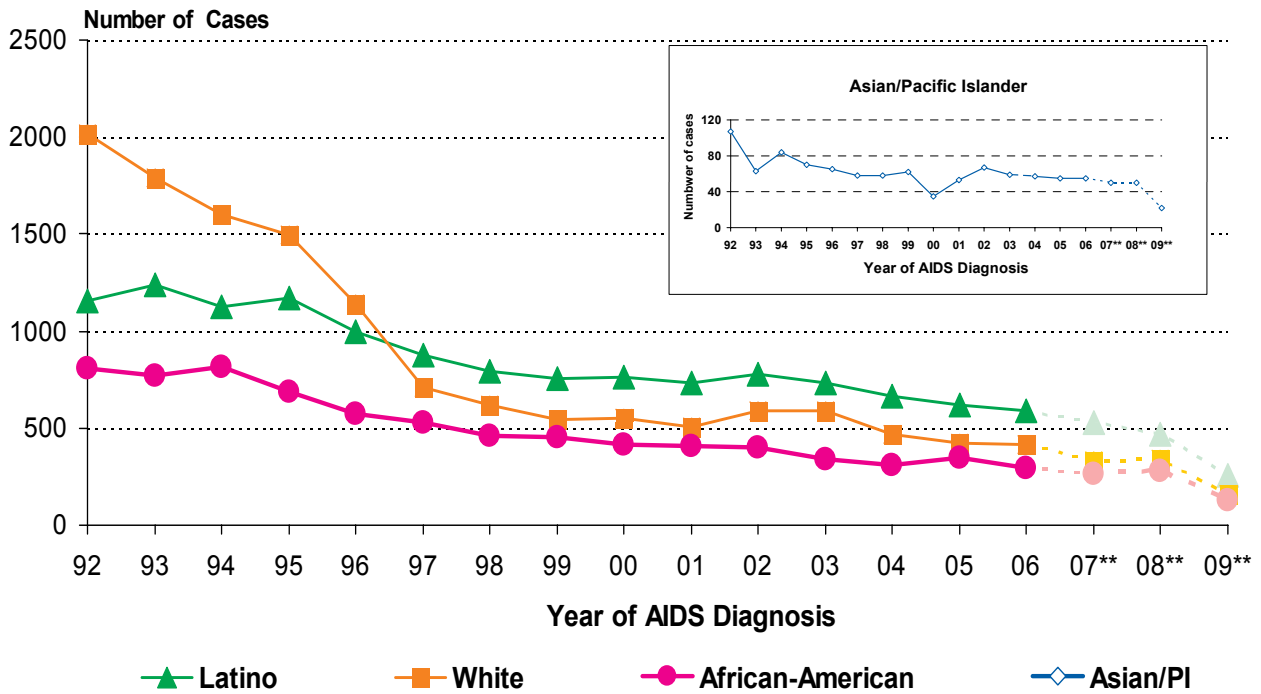


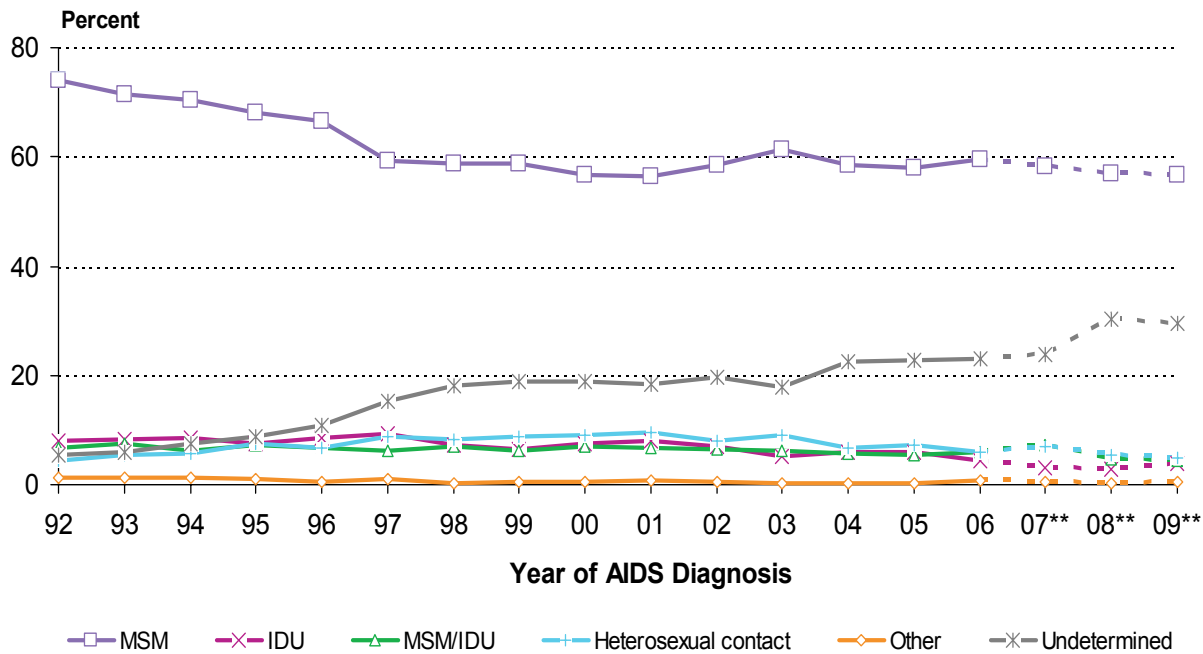
FIGURE 6. NUMBER OF ADULT/ADOLESCENT AIDS CASES BY RACE/ETHNICITY* AND YEAR OF DIAGNOSIS, LOS ANGELES COUNTY, 1992-2009



* American Indian and Alaskan Native are not presented here because small numbers may result in unstable estimates.

** Data are provisional due to reporting delay.

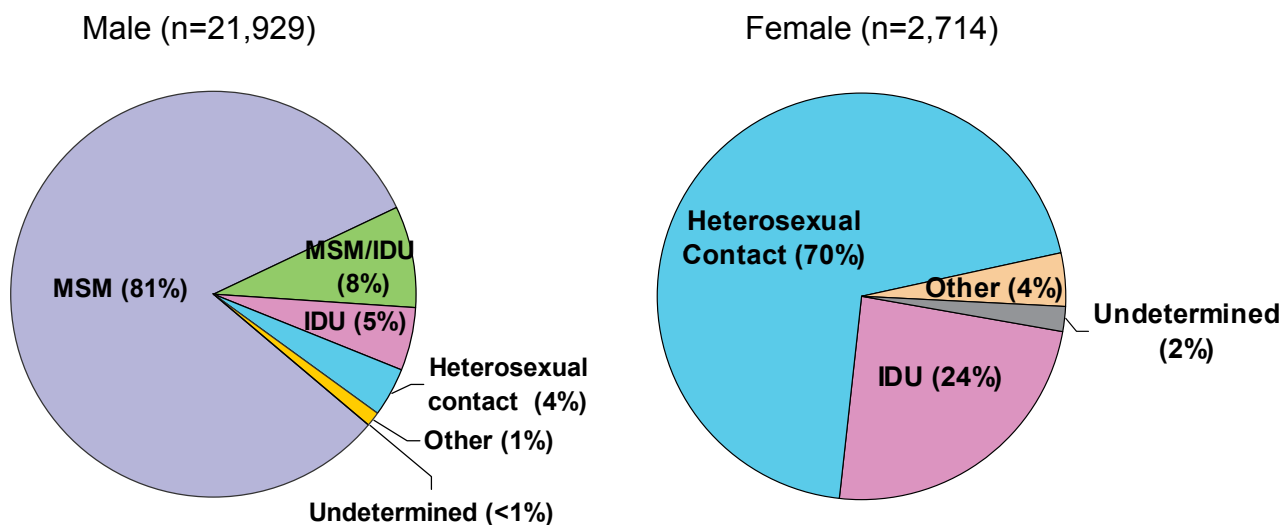
FIGURE 7. PERCENT OF ADULT/ADOLESCENT AIDS CASES BY MODE OF EXPOSURE* AND YEAR OF DIAGNOSIS, LOS ANGELES COUNTY, 1992-2009



* Other risks include hemophilia or coagulation disorder, transfusion recipient, mother with/at risk for HIV, and confirmed other risk.

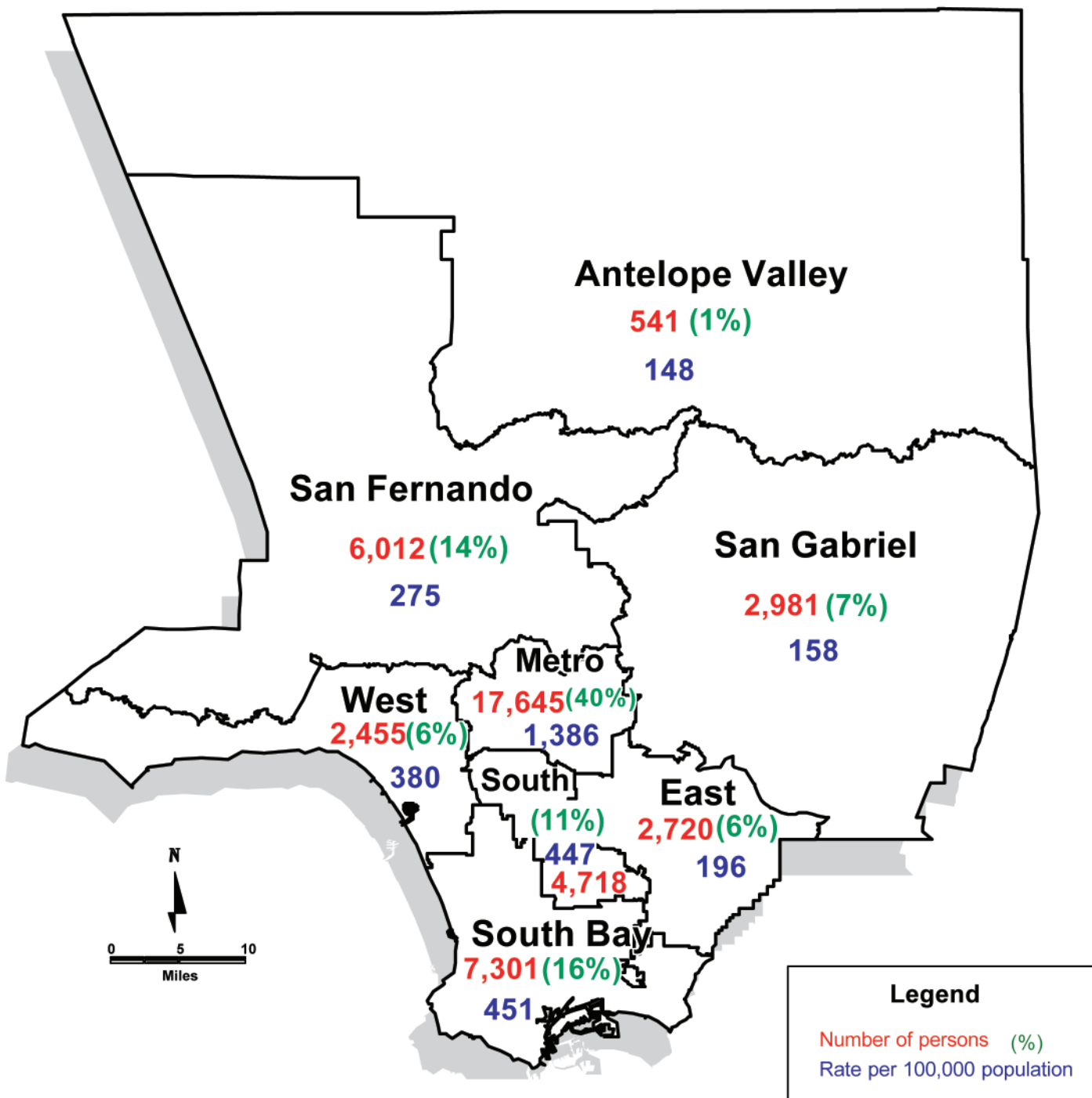
** Data are provisional due to reporting delay.

FIGURE 8. ADJUSTED MODE OF EXPOSURE¹ FOR PERSONS LIVING WITH AIDS AS OF DECEMBER 31, 2009 BY GENDER IN LOS ANGELES COUNTY



1. Persons who had no reported risk for HIV infection had been redistributed to a valid mode of exposure category based on the distribution of reclassified cases reported from 1996-2009 (see technical notes, page 32).

FIGURE 9. PERSONS REPORTED LIVING WITH HIV/AIDS AS OF 12/31/2009 (1) AND LIVING HIV/AIDS RATE (2) PER 100,000 POPULATION BY SERVICE PLANNING AREA (SPA) (3) IN LA COUNTY, (N=44,450)



1. Persons with HIV are based preliminary data collected from July 2002 to December 2009.
 2. Rates are based on population estimates (PEPS) for 2008.
 3. SPA refers to the SPA of residence at time of HIV or AIDS diagnosis.

Appendix 1: 2008 Revised Surveillance Case Definitions for Human Immunodeficiency Virus (HIV) Infection Among Adults and Adolescents (aged ≥13 years)

“These case definitions are intended for public health surveillance only and not as a guide for clinical diagnosis. Public health surveillance data are used primarily for monitoring the HIV epidemic and for planning on a population level, not for making clinical decisions for individual patients. CDC and the Council of State and Territorial Epidemiologists recommend that all states and territories conduct case surveillance of HIV infection and AIDS using the 2008 surveillance case definitions, effective immediately.” ~ MMWR 2008;57 (No. RR-10)

Stage	Laboratory Evidence*	Clinical Evidence
Stage 1	Laboratory confirmation of HIV infection and CD4+ T-lymphocyte count of ≥500 cells/μl or CD4+ T-lymphocyte percentage of ≥29	None required (but no AIDS-defining condition)
Stage 2	Laboratory confirmation of HIV infection and CD4+ T-lymphocyte count of 200-499 cells/μl or CD4+ T-lymphocyte percentage of 14-28	None require (but no AIDS-defining condition)
Stage 3 (AIDS)	Laboratory confirmation of HIV infection and CD4+ T-lymphocyte count of <200 cells/μl or CD4+ T-lymphocyte percentage of <14 [†]	Or documentation of an AIDS-defining condition (with laboratory confirmation of HIV infection) [†]
Stage unknown [§]	Laboratory confirmation of HIV infection and no information on CD4+ T-lymphocyte count or percentage	And no information on presence of AIDS-defining conditions

* The CD4+ T-lymphocyte percentage is the percentage of total lymphocytes. If the CD4+ T-lymphocyte count and percentage do not correspond to the same HIV infection stage, select the more severe stage.

[†] Documentation of an AIDS-defining condition (Appendix 2) supersedes a CD4+ T-lymphocyte count of ≥200 cells/μL and a CD4+ T-lymphocyte percentage of total lymphocytes of ≥14. Definitive diagnostic methods for these conditions are available in Appendix C of the 1993 revised HIV classification system and the expanded AIDS case definition (CDC. 1993 Revised classification system for HIV infection and expanded surveillance case definition for AIDS among adolescents and adults. MMWR 1992;41[No. RR-17]) and from the National Notifiable Diseases Surveillance System (available at http://www.cdc.gov/epo/dphsi/casedef/case_definitions.htm).

[§] Although cases with no information on CD4+ T-lymphocyte count or percentage or on the presence of AIDS-defining conditions can be classified as stage unknown, every effort should be made to report CD4+ T-lymphocyte counts or percentages and the presence of AIDS-defining conditions at the time of diagnosis. Additional CD4+ T-lymphocyte counts or percentages and any identified AIDS-defining conditions can be reported as recommended. (Council of State and Territorial Epidemiologists. Laboratory reporting of clinical test results indicative of HIV infection: new standards for a new era of surveillance and prevention [Position Statement 04-ID-07]; 2004. Available at <http://www.cste.org/ps/2004pdf/04-ID-07-final.pdf>.)

Criteria for HIV infection for persons aged ≥13 years:

Laboratory Criteria:

Positive result from an HIV antibody screening test (e.g., reactive enzyme immunoassay [EIA]*) confirmed by a positive result from a supplemental HIV antibody test (e.g., Western blot or indirect immunofluorescence assay test) OR positive result or report of a detectable quantity (i.e., within the established limits of the laboratory test) from any of the following HIV virologic (i.e., non-antibody) tests[†]:

- HIV nucleic acid (DNA or RNA) detection test (e.g., polymerase chain reaction [PCR])
- HIV p24 antigen test, including neutralization assay
- HIV isolation (viral culture)

Other Criterion (for Cases that Do Not Meet Laboratory Criteria)

HIV infection diagnosed by a physician or qualified medical-care provider[§] based on the laboratory criteria and documented in a medical record.[¶] Oral reports of prior laboratory test results are not acceptable.

* Rapid tests are EIAs that do not have to be repeated but require a confirmatory test if reactive. Most conventional EIAs require a repeatedly reactive EIA that is confirmed by a positive result with a supplemental test for HIV antibody. Standard laboratory testing procedures should always be followed.

† For HIV screening, HIV virologic (non-antibody) tests should not be used in lieu of approved HIV antibody screening tests. A negative result (i.e., undetectable or nonreactive) from an HIV virologic test (e.g., viral RNA nucleic acid test) does not rule out the diagnosis of HIV infection.

§ Qualified medical-care providers might differ by jurisdiction and might include physicians, nurse practitioners, physician assistants, or nurse midwives.

¶ An original or copy of the laboratory report is preferred; however, in the rare instance the laboratory report is not available, a description of the laboratory report results by a physician or qualified medical-care provider documented in the medical record is acceptable for surveillance purposes. Every effort should be made to obtain a copy of the laboratory report for documentation in the medical record.

For the criteria for HIV infection among children aged <13 years, see “Revised Surveillance Case Definitions for HIV Infection Among Adults, Adolescents, and Children Aged <18 Months and for HIV Infection and AIDS Among Children Aged 18 Months to <13 Years --- United States, 2008”- MMWR 2008;57 (No. RR-10) <http://www.cdc.gov/mmwr/preview/mmwrhtml/rr5710a1.htm>

Appendix 2: AIDS-Defining Conditions

- Bacterial infections, multiple or recurrent*
- Candidiasis of bronchi, trachea, or lungs
- Candidiasis of esophagus †
- Cervical cancer, invasive §
- Coccidioidomycosis, disseminated or extrapulmonary
- Cryptococcosis, extrapulmonary
- Cryptosporidiosis, chronic intestinal (>1 month’s duration)
- Cytomegalovirus disease (other than liver, spleen, or nodes), onset at age >1 month
- Cytomegalovirus retinitis (with loss of vision) †
- Encephalopathy, HIV related
- Herpes simplex: chronic ulcers (>1 month’s duration) or bronchitis, pneumonitis, or esophagitis (onset at age >1 month)
- Histoplasmosis, disseminated or extrapulmonary
- Isosporiasis, chronic intestinal (>1 month’s duration)
- Kaposi’s sarcoma†
- Lymphoid interstitial pneumonia or pulmonary lymphoid hyperplasia complex*†
- Lymphoma, Burkitt’s (or equivalent term)
- Lymphoma, immunoblastic (or equivalent term)
- Lymphoma, primary, of brain
- *Mycobacterium avium* complex or *Mycobacterium kansasii*, disseminated or extrapulmonary†
- *Mycobacterium tuberculosis* of any site, pulmonary, †§ disseminated,† or extrapulmonary†
- *Mycobacterium*, other species or unidentified species, disseminated† or extrapulmonary†
- *Pneumocystis jirovecii* pneumonia†
- Pneumonia, recurrent †§
- Progressive multifocal leukoencephalopathy
- *Salmonella* septicemia, recurrent
- Toxoplasmosis of brain, onset at age >1 month †
- Wasting syndrome attributed to HIV

* Only among children aged <13 years. (CDC. 1994 Revised classification system for human immunodeficiency virus infection in children less than 13 years of age. MMWR 1994;43[No. RR-12].)

† Condition that might be diagnosed presumptively.

§ Only among adults and adolescents aged ≥13 years. (CDC. 1993 Revised classification system for HIV infection and expanded surveillance case definition for AIDS among adolescents and adults. MMWR 1992;41[No. RR-17].)

Appendix 3: Technical Notes

Reporting Delay

Reporting delay is defined as the time interval between the date an AIDS diagnosis was made and the date the case was reported. The median reporting delay for all cases reported in 2008 was 7 months (range 0 to 253 months). The impact of report delay must be considered when evaluating trends in case numbers and rates over time (Figure 1-7, Tables 1, 4-8, 10, 12-13, 17, and 20-21).

Rates

For Figure 3-4, Table 4, Table 12-14, Table 16-18, Table 20 and Table 22-23. AIDS case rates are calculated using Population Estimation and Projection System (PEPS) for 1992-2008 that were prepared by Walter R. McDonald & Associates, Inc. (WRMA) for Urban Research, LA County ISD. Conforming to standard criterion used by the National Center for Health Statistics, rates are considered unreliable when the relative standard error of the rate is greater than or equal to 23%--that is, when rates are based on less than 20 observations.

Race and ethnicity

Mandated collection of race and ethnicity data was implemented in January 1, 2003 as required by the OMB Statistical Policy Directive 15. A minimum of 5 race categories should be collected including American Indian or Alaska Native, Asian, black or African American, Native Hawaiian or Other Pacific Islander, and white. Additionally, systems must be able to retain information when multiple racial categories are reported. Two ethnicity categories should be collected regardless of race: Hispanic and non-Hispanic.

Race and Ethnicity in this report are grouped using the following criteria exclusively: A record is considered to be 'Hispanic' if so indicated in race or ethnicity field, regardless of any other race information found on the record. When not indicated as 'Hispanic', a record is considered to be 'American Indian/Alaskan Native' if the race field contains AI/AN information, regardless of any other race information found on the record. A record is considered to be 'Asian/Pacific Islander' when either indicated as Asian or Native Hawaiian/Pacific Islander, or both in the race fields. Aside from the above criteria, a record is categorized as 'Multi-race' when more than one race are indicated in the above race fields. All other records with a single race indicated are placed in the corresponding race category. Persons with multiple racial categories or unknown race are included in the total numbers in Table 2-4, and Table 14-23.

Exposure Categories

Exposure categories are assigned in a hierarchical fashion (listed from highest to lowest in the column headed "Exposure Category"). Cases for which more than one exposure category have been identified are assigned to the category listed highest in the hierarchy. For example, a man who reports sexual contact with another man and heterosexual contact with an HIV-positive woman would be classified as "male-male sexual contact." The only exception to this rule includes those men who report both sexual contact with another man and injection-drug use. A separate exposure category has been created for these cases.

The "Undetermined" exposure category includes persons with no history of exposure to HIV through one of the defined exposure categories. Cases reported as undetermined include some persons still under investigation. If the investigation identifies a mode of exposure, the case is reclassified into the corresponding exposure category. Because recently reported AIDS cases are more likely to be reported without sufficient risk factor information, recent AIDS incidence in some transmission categories will be underestimated unless an adjustment is made. For figures that show the distribution of AIDS cases by adjusted mode of exposure, persons who had no reported risk for HIV exposure were redistributed to other valid exposure categories based on the sex-, and race-specific distribution of the cases reported from 1993 to 2002 and reclassified to a valid exposure category.

AIDS-Indicator Conditions

At the time of initial case report, all available information about AIDS-defining conditions is collected. However, after a case has been reported, systematic follow-up is not done to identify subsequent AIDS-defining conditions. Therefore, the information presented in Table 11 reflects initial AIDS-defining condition(s) and should be considered a minimum estimate of all AIDS-defining conditions.

All persons meeting the CDC AIDS case or HIV definition are reportable by name as required by the *California Code of Regulations, Title 17, Section 2500/2600/2641.5-2643.20*. If you have questions on how to report a case, would like a case report form and/or information on the case definition, would like assistance establishing an HIV/AIDS surveillance system, or receive the semi-annual surveillance summary and other periodic reports, contact the HIV Epidemiology Program at the address below:

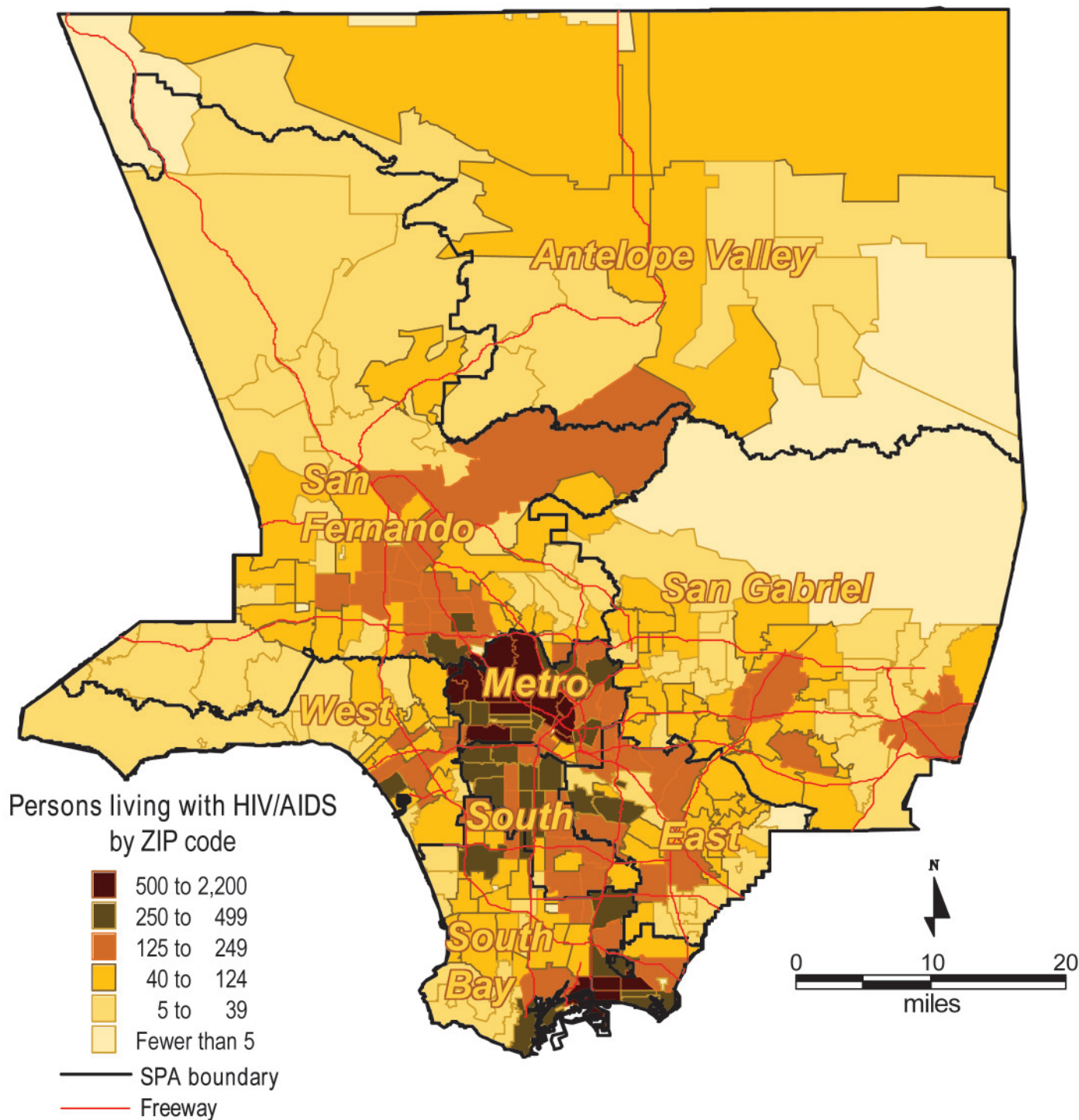
HIV Epidemiology Program
Los Angeles County Department of Public Health
600 South Commonwealth Avenue, Suite 1260
Los Angeles, California 90005
Phone: (213) 351-8516
FAX: (213) 487-4683
Email: hivepiemail@ph.lacounty.gov

DOCUMENTING HIV RISK (MODE OF HIV EXPOSURE)

Timely information on transmission risk for persons diagnosed with HIV and AIDS is important for HIV prevention planning and resource allocation.

- ✓ In over 20% of persons reported with HIV and AIDS, providers did not document and/or report a mode of exposure to HIV.
- ✓ The diagnosing provider should always ask patients and clients about their HIV exposure risks and document them in both the medical record and the case report form.
- ✓ Exposure categories for HIV transmission include:
 1. Men who have sex with men
 2. Recreational injection drug users
 3. Recipients of blood transfusions, organ/other tissue transplants
 4. Sexual partners of HIV-infected persons
 5. Sexual partners of injection drug users
 6. Female sexual partners of men who have sex with men
 7. Sexual partners of persons with clotting disorders, hemophiliacs
 8. Infants born of and/or breast-fed by HIV-infected women

FIG 10. PERSONS REPORTED LIVING WITH HIV/AIDS AS OF 12/31/2009 (1)
 BY ZIP CODE(2) AND SERVICE PLANNING AREA (SPA)
 IN LOS ANGELES COUNTY (N=44,450)



1. Persons with HIV are based on the preliminary data collected from July 2002 to December 2009.
 2. ZIP code information is based on the residence at time of diagnosis or the care facility location when the residential information is unknown.