

HIV/AIDS SEMI-ANNUAL SURVEILLANCE SUMMARY

July 2008

Cases Reported as of June 30, 2008



Enriching Lives

HIV EPIDEMIOLOGY PROGRAM

600 S. Commonwealth Avenue

Suite 1920

Los Angeles, CA 90005

Phone: (213) 351-8196

Fax: (213) 487-9386

<http://publichealth.lacounty.gov/hiv/>



JONATHAN E. FIELDING, M.D., M.P.H.
Director and Health Officer

JONATHAN E. FREEDMAN
Chief Deputy

313 North Figueroa Street, Room 806
Los Angeles, California 90012
TEL (213) 240-8117 • FAX (213) 975-1273

HIV Epidemiology Program

July 24, 2008

Douglas Frye, M.D., M.P.H., Director
600 South Commonwealth Avenue, Suite 1920
Los Angeles, California 90005
TEL (213) 351-8196 • FAX (213) 487-9386

<http://publichealth.lacounty.gov/hiv>

BOARD OF SUPERVISORS

Gloria Molina
First District

Yvonne B. Burke
Second District

Zev Yaroslavsky
Third District

Don Knabe
Fourth District

Michael D. Antonovich
Fifth District

Dear Colleague:

Enclosed you will find the July 2008 issue of the *HIV/AIDS Semi-annual Surveillance Summary* for Los Angeles County. As of December 31, 2007, there have been 54,003 persons reported with AIDS, 23,095 of whom are living with AIDS.

We have also reported over 17,000 cases of non-AIDS HIV thus far by name or code, we still have a backlog of some 10,000 cases to investigate and report. Until such time as we can assure that the HIV registry is complete and representative of HIV cases in Los Angeles County, these data will not be made available for analysis or presented in detail in this report. For a crude estimate of demographic distribution of non-AIDS HIV cases, please use the distribution of HIV cases found in Table 23 of cases reported between 2002 and 2006 using a non-name code. We estimate that there are 23,000 to 28,000 persons living with non-AIDS HIV cases in the county.

A few changes in the report include: We have added a new table, Table 20, showing the racial/ethnic- and gender-specific numbers and percentage for persons living with AIDS by age, mode of HIV Exposure, and Service Planning Area (SPA); Tables 4 through 8 have been changed from just annual *adult/adolescent* AIDS cases to *all* annual AIDS cases; annual adult/adolescent case counts can be found in a new Table 21. A new map has also been added on the back cover of the report to show the density (number of cases per 10 square miles) and the mean center for persons reported with AIDS from 2000 to 2007.

A fillable HIV/AIDS case report form in Acrobat format is now available for download at <http://publichealth.lacounty.gov/hiv/hivreporting.htm>. ***To ensure protection of patient confidentiality, the new reporting regulations prohibit providers and laboratories from sending us reports by email or facsimile.*** Instead, please mail in your report to us in a double-envelope at: 600 S. Commonwealth Ave., Suite 1260, Los Angeles, CA 90005 or phone us at: (213) 351-8516. Data presented in this summary report, and other HIV-related information, are available at our Web site. You may request HIV and AIDS data by phone or by logging onto our Web site.

Sincerely,

Douglas M. Frye.

NOTICE TO HEALTH CARE PROVIDERS AND OTHERS RESPONSIBLE FOR DISEASE REPORTING:

California Code of Regulations, Title 17, Section 2500 requires that all diagnosed or suspected cases of AIDS as defined by CDC must be reported within seven (7) days to the Health Officer. In addition, California Code of Regulations, Title 17, Section 2600/2641.5-2643.20 require both health care providers and laboratories report HIV cases by name to the Health Officer within seven (7) days. To obtain more information on the HIV/AIDS reporting requirement, or to obtain case report forms or to report a case, please visit our web site: <http://publichealth.lacounty.gov/hiv/hivreporting.htm>, or contact the HIV Epidemiology Program, 600 South Commonwealth Avenue, Suite 1260, Los Angeles, CA 90005. Phone (213) 351-8516; Fax (213) 487-4683.

The *HIV/AIDS Surveillance Summary* is published semiannually by the HIV Epidemiology Program, Los Angeles County Department of Public Health. Copies of this report are available free of charge. Individuals or organizations may be added to the mailing list by contacting the HIV Epidemiology Program at the phone number or address listed above. This report is also available at our web site at <http://publichealth.lacounty.gov/hiv/>.

Suggested Citation: HIV Epidemiology Program, Los Angeles County Department of Public Health. HIV/AIDS Surveillance Summary, July 2008: 1-30.

Los Angeles County Department of Public Health.....Jonathan E. Fielding, M.D, M.P.H.
Director and Health Officer

Communicable Disease Control and PreventionRobert Kim-Farley, M.D., M.P.H.
Director

HIV Epidemiology Program.....Douglas Frye, M.D., M.P.H.
Director

Data Analysis UnitVirginia Hu, M.P.H.
Epidemiologist
Zhijuan Sheng, M.S.
Epidemiologist

Data Acquisition Unit.....Latonya Taylor, R.N., M.S.N./M.P.H.,C.N.S.
Assistant Program Specialist

CONTENTS

Surveillance Summary.....	1
Figure 1: AIDS Cases Reported and Diagnosed by Year, Los Angeles County, 1985- 2007	2
Figure 2: Cases of AIDS by Year of Diagnosis and Deaths among AIDS Cases by Year of Death, Los Angeles County.....	3
Table 1: AIDS Cases, Deaths and Persons Living with AIDS by Year, Los Angeles County	3
Table 2: Cumulative Cases of AIDS by Gender, Age Group and Race/Ethnicity, Los Angeles County	4
Table 3: Cumulative Adult/Adolescent Cases of AIDS by Gender, Exposure Category and Race/Ethnicity, Los Angeles County	5
Table 4: Annual Cases of AIDS and Rates per 100,000 by Gender, Year of Diagnosis and Race/Ethnicity, Los Angeles County.....	6
Table 5: Annual Cases of AIDS by Gender, Exposure Category and Year of Diagnosis, Los Angeles County...	7
Table 6: Annual White Cases of AIDS by Gender, Exposure Category and Year of Diagnosis, Los Angeles County.....	8
Table 7: Annual Black Cases of AIDS by Gender, Exposure Category and Year of Diagnosis, Los Angeles County.....	9
Table 8: Annual Hispanic Cases of AIDS by Gender, Exposure Category and Year of Diagnosis, Los Angeles County.....	10
Table 9: Cumulative Pediatric Cases of AIDS by Exposure Category and Race/Ethnicity, Los Angeles County.....	11
Table 10: Pediatric Cases of AIDS by Race/Ethnicity, Exposure Category and Year of Diagnosis, Los Angeles County.....	11
Table 11: Cumulative Adult/Adolescent and Pediatric Cases of Injection Drug-Associated AIDS by Gender, Exposure Category and Race/Ethnicity, Los Angeles County	12
Table 12: Cumulative Adult/Adolescent AIDS Indicator Conditions at Time of Diagnosis by Gender, Los Angeles County	13
Table 13: Annual Cases of AIDS and Rates per 100,000 by Service Planning Area/Health District of Residence and Year of Diagnosis, Los Angeles County	14
Table 14: Annual Cases of AIDS and Rates per 100,000 by City/Area of Residence and Year of Diagnosis, Top 35 Cities Ranked by 2007 Rate, Los Angeles County	15
Table 15: Reported Numbers and Rates per 100,000 for Persons Diagnosed with AIDS and Persons Living with AIDS as of December 31, 2007 by Gender, Age, Race/Ethnicity and Exposure Category, Los Angeles County	16
Table 16: Cumulative Number of Persons Diagnosed with AIDS by Gender, Age, Race/Ethnicity and Exposure Category for each Service Planning Area in Los Angeles County, 1982-2008	17
Table 17: Number of Persons Diagnosed with AIDS and Rate per 100,000 in Year 2007 by Gender, Age, Race/Ethnicity and Exposure Category for each Service Planning Area in Los Angeles County	18
Table 18: Persons Living with AIDS and Rate per 100,000 at the End of Calendar Year, by Gender, Age, Race/Ethnicity and Exposure Category, Los Angeles County	19

Table 19: Persons Living with AIDS and Rate per 100,000 as of December 31, 2007 by Service Planning Area, Gender, Age, Race/Ethnicity and Exposure Category, Los Angeles County20

Table 20: Racial/ethnic- and Gender-Specific Numbers and Percentage for Persons Living with AIDS as of December 31, 2007 by Age, Exposure Category and Service Planning Area, Los Angeles County ...21

Table 21: Annual Adult/Adolescent Cases of AIDS and Rates per 100,000 by Gender, Year of Diagnosis and Race/Ethnicity, Los Angeles County22

Table 22: Annual Deaths among AIDS Cases by Age, Race/Ethnicity, Gender, Exposure Category, and Service Planning Area, Los Angeles County23

Table 23: Characteristics of Persons Reported with Non-AIDS HIV by Non-Name Code - Final, July 1, 2002 - April 17, 2006, Los Angeles County24

Figure 3: Male Adult/Adolescent AIDS Rates by Race/Ethnicity and Year of Diagnosis, Los Angeles County, 1992-200625

Figure 4: Female Adult/Adolescent AIDS Rates by Race/Ethnicity and Year of Diagnosis, Los Angeles County, 1992-200625

Figure 5: Percent of Adult/Adolescent AIDS Cases by Race/Ethnicity and Year of Diagnosis, Los Angeles County, 1992-200726

Figure 6: Number of Adult/Adolescent AIDS Cases by Race/Ethnicity and Year of Diagnosis, Los Angeles County, 1992-200726

Figure 7: Percent of Adult/Adolescent AIDS Cases by Mode of Exposure and Year of Diagnosis, Los Angeles County, 1992-200727

Figure 8: Adjusted Mode of Exposure for Persons Living with AIDS as of December 31, 2007 by Gender in Los Angeles County27

Appendix 1:1993 Revised Classification System for HIV Infection and Expanded Surveillance Case Definition for Adolescents and Adults.....28

Appendix 2:Technical Notes29

Figure 9: Distribution of Persons Reported with AIDS in Los Angeles County in 2000-2007.....Back Cover

**Los Angeles County Department of Public Health
HIV Epidemiology Program
AIDS Semi-annual Surveillance Summary, January-June 2008**

Los Angeles County¹

New cases reported this period	864
Deaths reported this period	163
Cumulative cases	54,003
Cumulative deaths	30,908
Living cases	23,095

California²

Cumulative cases	150,142
Cumulative deaths	85,261
Living cases	64,881

United States³

Cumulative cases	1,014,797
Cumulative deaths	565,927
Living cases	448,870

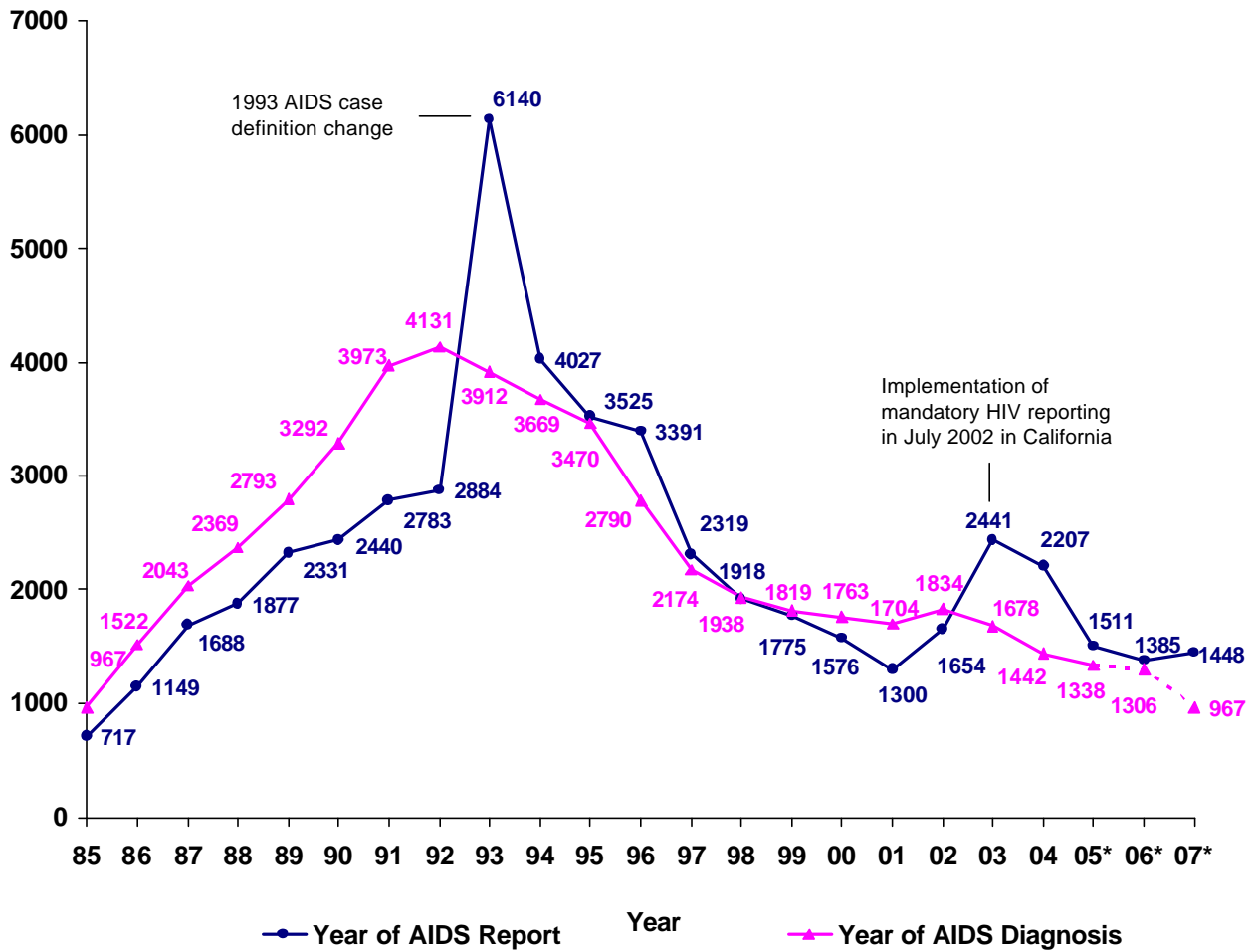
¹ Includes all cases reported to the HIV Epidemiology Program as of June 30, 2008.

² California Office of AIDS, HIV/AIDS Case Registry. Monthly HIV/AIDS Statistics in California, June 30, 2008.

³ Centers for Disease Control and Prevention. HIV/AIDS Surveillance Report, 2006. Vol. 18.

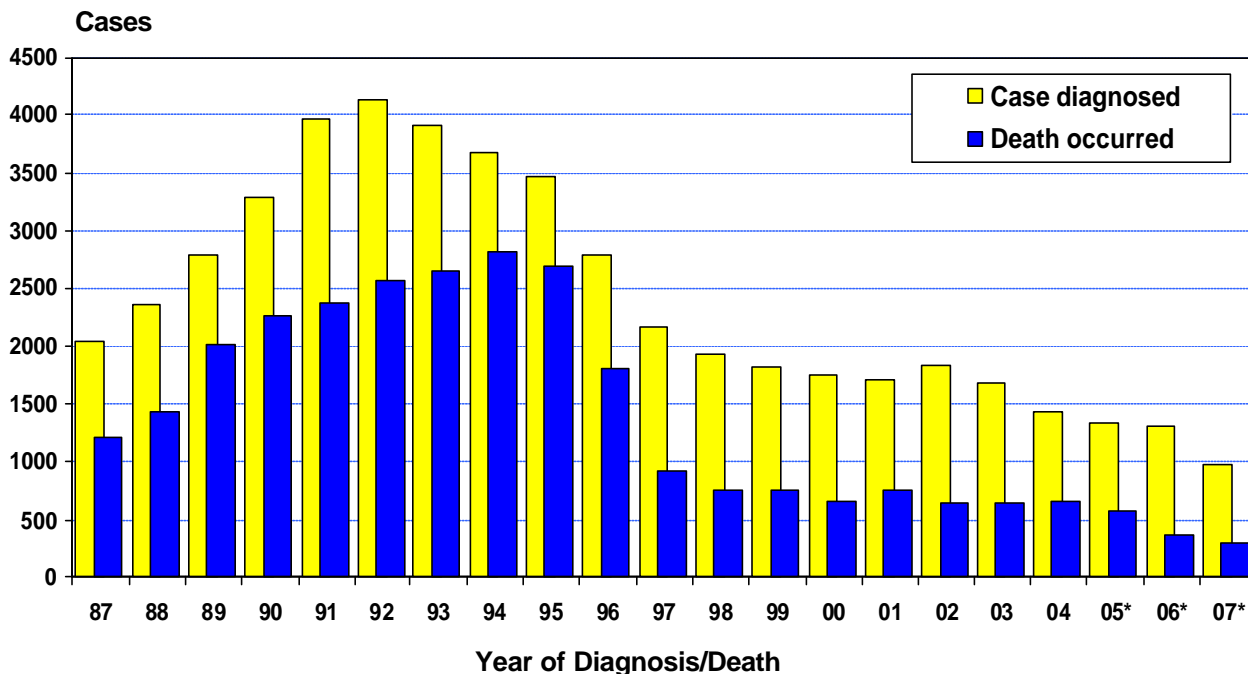
The figures do not represent an enumeration of actual cases for this category. Rather, it is a point estimate of cases for this category that has been adjusted for reporting delay, but not adjusted for incomplete reporting.

FIGURE 1. AIDS CASES REPORTED AND DIAGNOSED BY YEAR, LOS ANGELES COUNTY, 1985-2007



* Cases diagnosed in 2005-2007 are provisional due to reporting delay.

FIGURE 2. CASES OF AIDS BY YEAR OF DIAGNOSIS AND DEATHS AMONG AIDS CASES BY YEAR OF DEATH, LOS ANGELES COUNTY



* Data are provisional for 2005-2007.

TABLE 1. AIDS CASES, DEATHS AND PERSONS LIVING WITH AIDS BY YEAR REPORTED BY JUNE 30, 2008, LOS ANGELES COUNTY

Year	No. of Cases diagnosed	No. of Deaths occurred ¹	No. of Living cases ²
1982- 1989	10587	6665	3922
1990	3292	2260	4954
1991	3973	2382	6545
1992	4131	2569	8107
1993	3912	2656	9363
1994	3669	2826	10206
1995	3470	2700	10976
1996	2790	1797	11969
1997	2174	929	13214
1998	1938	751	14401
1999	1819	757	15463
2000	1763	648	16578
2001	1704	745	17537
2002	1834	633	18738
2003	1678	636	19780
2004	1442	655	20567
2005 (4)	1338	569	21336
2006 (4)	1306	367	22275
2007 (4)	967	298	22944
Cumulative	54003	30908	

1. Total death includes cases whose date of death is unknown.

2. Includes persons living with AIDS at the end of each year.

3. Data are provisional due to reporting delay.

TABLE 2. CUMULATIVE CASES OF AIDS BY GENDER, AGE GROUP AND RACE/ETHNICITY
 REPORTED BY JUNE 30, 2008
 LOS ANGELES COUNTY

Age at Diagnosis (years)	Race/Ethnicity					
	White No. (%)	Black No. (%)	Hispanic No. (%)	Asian (1) No. (%)	AI/AN (2) No. (%)	Total (3) No. (%)
MALE						
<13	25 (<1)	51 (1)	58 (<1)	<5 (-)	<5 (-)	138 (<1)
13- 19	38 (<1)	56 (1)	115 (1)	5 (<1)	<5 (-)	219 (<1)
20- 29	2753 (12)	1500 (16)	3402 (22)	161 (14)	49 (26)	7875 (16)
30- 39	10274 (44)	3962 (43)	6873 (45)	492 (42)	83 (43)	21735 (44)
40- 49	6955 (30)	2645 (28)	3289 (22)	346 (30)	41 (21)	13307 (27)
50- 59	2570 (11)	862 (9)	1068 (7)	121 (10)	10 (5)	4639 (9)
60+	852 (4)	233 (3)	369 (2)	31 (3)	<5 (-)	1491 (3)
Male subtotal	23467	9309	15174	1159	192	49404
[% of subtotal]	[48]	[19]	[31]	[2]	[<1]	[100]
FEMALE						
<13	19 (2)	36 (2)	55 (3)	<5 (-)	<5 (-)	113 (2)
13- 19	12 (1)	20 (1)	31 (2)	<5 (-)	<5 (-)	68 (1)
20- 29	165 (17)	350 (20)	408 (23)	14 (13)	7 (23)	945 (21)
30- 39	359 (37)	653 (38)	609 (35)	31 (28)	11 (37)	1667 (36)
40- 49	240 (25)	445 (26)	366 (21)	35 (32)	5 (17)	1097 (24)
50- 59	104 (11)	173 (10)	184 (11)	15 (14)	<5 (-)	479 (10)
60+	80 (8)	55 (3)	85 (5)	7 (6)	<5 (-)	230 (5)
Female subtotal	979	1732	1738	109	30	4599
[% of subtotal]	[21]	[38]	[38]	[2]	[1]	[100]
BOTH						
<13	44 (<1)	87 (1)	113 (1)	6 (<1)	<5 (-)	251 (<1)
13- 19	50 (<1)	76 (1)	146 (1)	9 (1)	5 (2)	287 (1)
20- 29	2918 (12)	1850 (17)	3810 (23)	175 (14)	56 (25)	8820 (16)
30- 39	10633 (43)	4615 (42)	7482 (44)	523 (41)	94 (42)	23402 (43)
40- 49	7195 (29)	3090 (28)	3655 (22)	381 (30)	46 (21)	14404 (27)
50- 59	2674 (11)	1035 (9)	1252 (7)	136 (11)	13 (6)	5118 (9)
60+	932 (4)	288 (3)	454 (3)	38 (3)	7 (3)	1721 (3)
Total	24446	11041	16912	1268	222	54003
[% of total]	[45]	[20]	[31]	[2]	[<1]	[100]

1. Includes 11 Burmese, 54 Cambodian, 109 Chinese, 359 Filipino, 19 Guamanian, 40 Hawaiian, 21 Indian, 19 Indonesian, 135 Japanese, 47 Korean, <5 Loatian, 10 Malayan, <5 N Marianan, 11 Pacific Islander, <5 Pakistani, 32 Samoan, <5 Singaporean, <5 Sri Lankan, <5 Tahitian, 30 Taiwanese, 98 Thai, <5 Tongan, and 105 Vietnamese; 152 are of unknown Asian ethnicity.

2. AI/AN=American Indian/Alaska Native.

3. Includes 103 males and 11 females who have multiple races/ethnicities or have missing information on race/ethnicity.

TABLE 3. CUMULATIVE ADULT/ADOLESCENT CASES OF AIDS BY GENDER, EXPOSURE CATEGORY AND RACE/ETHNICITY
 REPORTED BY JUNE 30, 2008
 LOS ANGELES COUNTY

Adult/Adolescent Exposure Category (1)	Race/Ethnicity					
	White No. (%)	Black No. (%)	Hispanic No. (%)	Asian No. (%)	AI/AN (2) No. (%)	Total (3) No. (%)
MALE						
Male-male sexual contact	19592 (84)	5935 (64)	10526 (70)	897 (78)	135 (71)	37162 (75)
Injection drug user (IDU)	770 (3)	930 (10)	832 (6)	17 (1)	11 (6)	2564 (5)
Male-male sexual contact/IDU	1873 (8)	890 (10)	876 (6)	40 (3)	34 (18)	3722 (8)
Hemophilia or coagulation disorder	98 (<1)	22 (<1)	41 (<1)	11 (1)	<5 (-)	173 (<1)
Heterosexual contact (4)	155 (1)	273 (3)	443 (3)	22 (2)	<5 (-)	894 (2)
Transfusion recipient	140 (1)	43 (<1)	105 (1)	20 (2)	<5 (-)	309 (1)
Mother with/at risk for HIV	<5 (-)	6 (<1)	6 (<1)	<5 (-)	<5 (-)	16 (<1)
Other/Undetermined	811 (3)	1159 (13)	2287 (15)	149 (13)	9 (5)	4426 (9)
Male subtotal	23442	9258	15116	1156	191	49266
[% of subtotal]	[48]	[19]	[31]	[2]	[<1]	[100]
FEMALE						
Injection drug user (IDU)	329 (34)	462 (27)	232 (14)	10 (9)	13 (43)	1053 (23)
Hemophilia or coagulation disorder	8 (1)	<5 (-)	<5 (-)	<5 (-)	<5 (-)	15 (<1)
Heterosexual contact (4)	384 (40)	703 (41)	867 (52)	51 (48)	9 (30)	2017 (45)
Transfusion recipient	79 (8)	57 (3)	106 (6)	18 (17)	<5 (-)	260 (6)
Mother with/at risk for HIV	<5 (-)	<5 (-)	5 (<1)	<5 (-)	<5 (-)	10 (<1)
Other/Undetermined	159 (17)	467 (28)	471 (28)	26 (25)	8 (27)	1131 (25)
Female subtotal	960	1696	1683	106	30	4486
[% of subtotal]	[21]	[38]	[38]	[2]	[1]	[100]
BOTH						
Male-male sexual contact	19592 (80)	5935 (54)	10526 (63)	897 (71)	135 (61)	37162 (69)
Injection drug user (IDU)	1099 (5)	1392 (13)	1064 (6)	27 (2)	24 (11)	3617 (7)
Male-male sexual contact/IDU	1873 (8)	890 (8)	876 (5)	40 (3)	34 (15)	3722 (7)
Hemophilia or coagulation disorder	106 (<1)	26 (<1)	43 (<1)	11 (1)	<5 (-)	188 (<1)
Heterosexual contact (4)	539 (2)	976 (9)	1310 (8)	73 (6)	9 (4)	2911 (5)
Transfusion recipient	219 (1)	100 (1)	211 (1)	38 (3)	<5 (-)	569 (1)
Mother with/at risk for HIV	<5 (-)	9 (<1)	11 (<1)	<5 (-)	<5 (-)	26 (<1)
Other/Undetermined	970 (4)	1626 (15)	2758 (16)	175 (14)	17 (8)	5557 (10)
Total	24402	10954	16799	1262	221	53752
[% of total]	[45]	[20]	[31]	[2]	[<1]	[100]

1. Exposure categories are ordered hierarchically. Except for the combination listed, cases with multiple exposure categories are included in the category listed first.
2. AI/AN=American Indian/Alaska Native.
3. Includes 103 males and 11 females who have multiple races/ethnicities or have missing information on race/ethnicity.
4. Heterosexual contact with a person who is HIV-infected or at increased risk for HIV.

TABLE 4. ANNUAL CASES OF AIDS AND RATES PER 100,000 (1) BY GENDER, YEAR OF DIAGNOSIS AND RACE/ETHNICITY
 REPORTED BY JUNE 30, 2008
 LOS ANGELES COUNTY

Year of Diagnosis	Race/Ethnicity					Total (2) No. (Rate)
	White No. (Rate)	Black No. (Rate)	Hispanic No. (Rate)	Asian No. (Rate)	AI/AN No. (Rate)	
MALE						
1998	577 (37)	388 (89)	684 (33)	53 (10)	9 (70)	1716 (37)
1999	506 (33)	357 (82)	671 (32)	55 (10)	6 (47)	1602 (34)
2000	501 (33)	335 (76)	655 (30)	30 (5)	8 (58)	1530 (32)
2001	459 (30)	327 (74)	629 (28)	42 (7)	9 (65)	1473 (31)
2002	540 (35)	323 (73)	673 (30)	55 (9)	9 (64)	1604 (33)
2003	539 (35)	251 (57)	623 (27)	52 (8)	7 (48)	1476 (30)
2004	386 (25)	236 (54)	578 (24)	50 (8)	5 (34)	1261 (25)
2005 (3)	349 (23)	258 (59)	503 (21)	46 (7)	<5 (-)	1162 (23)
2006 (3)	363 (24)	237 (55)	476 (19)	47 (7)	<5 (-)	1130 (22)
2007 (3)	257 (17)	177 (40)	368 (15)	34 (5)	<5 (-)	843 (16)
Cumulative Male subtotal (4)	23467	9309	15174	1159	192	49404
FEMALE						
1998	41 (3)	78 (16)	96 (5)	<5 (-)	<5 (-)	222 (5)
1999	35 (2)	96 (19)	80 (4)	6 (1)	<5 (-)	217 (5)
2000	44 (3)	83 (16)	101 (5)	<5 (-)	<5 (-)	233 (5)
2001	34 (2)	79 (16)	107 (5)	9 (1)	<5 (-)	231 (5)
2002	38 (2)	78 (15)	104 (5)	8 (1)	<5 (-)	230 (5)
2003	30 (2)	73 (14)	93 (4)	5 (1)	<5 (-)	202 (4)
2004	34 (2)	73 (14)	66 (3)	5 (1)	<5 (-)	181 (4)
2005 (3)	25 (2)	75 (15)	69 (3)	6 (1)	<5 (-)	176 (3)
2006 (3)	22 (1)	68 (14)	78 (3)	<5 (-)	<5 (-)	176 (3)
2007 (3)	19 (1)	52 (10)	48 (2)	<5 (-)	<5 (-)	124 (2)
Cumulative Female subtotal (4)	979	1732	1738	109	30	4599
BOTH						
1998	618 (19)	466 (50)	780 (19)	57 (5)	12 (46)	1938 (21)
1999	541 (17)	453 (48)	751 (18)	61 (5)	6 (23)	1819 (19)
2000	545 (18)	418 (44)	756 (18)	34 (3)	9 (32)	1763 (18)
2001	493 (16)	406 (43)	736 (17)	51 (4)	11 (39)	1704 (17)
2002	578 (18)	401 (42)	777 (17)	63 (5)	10 (34)	1834 (19)
2003	569 (18)	324 (34)	716 (16)	57 (4)	8 (27)	1678 (17)
2004	420 (13)	309 (33)	644 (14)	55 (4)	7 (23)	1442 (14)
2005 (3)	374 (12)	333 (35)	572 (12)	52 (4)	<5 (-)	1338 (13)
2006 (3)	385 (12)	305 (33)	554 (11)	51 (4)	5 (16)	1306 (13)
2007 (3)	276 (9)	229 (24)	416 (9)	38 (3)	<5 (-)	967 (9)
Cumulative Total (4)	24446	11041	16912	1268	222	54003

1. Rates are based on population estimates for 1998-2007. Rates based on observations fewer than 20 may not be reliable (see Technical Notes, page 29).
2. Total includes persons who have multiple races/ethnicities or have missing information on race/ethnicity.
3. Data are provisional due to reporting delay.
4. Includes persons diagnosed since 1982.

TABLE 5. ANNUAL CASES OF AIDS BY GENDER, EXPOSURE CATEGORY AND YEAR OF DIAGNOSIS, REPORTED BY JUNE 30, 2008, LOS ANGELES COUNTY

Exposure Category (1)	Year of Diagnosis									Cumulative 1982- 2008 No. (%)
	1999 No. (%)	2000 No. (%)	2001 No. (%)	2002 No. (%)	2003 No. (%)	2004 No. (%)	2005(2) No. (%)	2006(2) No. (%)	2007(2) No. (%)	
MALE										
Male-male sexual contact	1068 (67)	999 (65)	959 (65)	1064 (66)	1025 (69)	839 (67)	754 (65)	767 (68)	560 (66)	37162 (75)
Injection drug user (IDU)	75 (5)	91 (6)	90 (6)	83 (5)	64 (4)	61 (5)	56 (5)	36 (3)	24 (3)	2564 (5)
Male-male sexual contact/IDU	111 (7)	121 (8)	113 (8)	115 (7)	105 (7)	76 (6)	67 (6)	79 (7)	63 (7)	3722 (8)
Hemophilia or coagulation disorder	<5 (-)	<5 (-)	5 (<1)	<5 (-)	<5 (-)	<5 (-)	<5 (-)	<5 (-)	<5 (-)	179 (<1)
Heterosexual contact (3)	53 (3)	51 (3)	67 (5)	59 (4)	59 (4)	29 (2)	28 (2)	26 (2)	17 (2)	894 (2)
Transfusion recipient	<5 (-)	<5 (-)	<5 (-)	8 (<1)	<5 (-)	<5 (-)	<5 (-)	<5 (-)	<5 (-)	354 (1)
Mother with/at risk for HIV	<5 (-)	<5 (-)	<5 (-)	<5 (-)	<5 (-)	<5 (-)	<5 (-)	5 (<1)	<5 (-)	101 (<1)
Other/Undetermined	289 (18)	258 (17)	231 (16)	271 (17)	217 (15)	253 (20)	252 (22)	213 (19)	176 (21)	4428 (9)
Male subtotal	1602	1530	1473	1604	1476	1261	1162	1130	843	49404
[% of annual cases]	[88]	[87]	[86]	[87]	[88]	[87]	[87]	[87]	[87]	[91]
FEMALE										
Injection drug user (IDU)	43 (20)	44 (19)	45 (19)	47 (20)	27 (13)	32 (18)	31 (18)	24 (14)	8 (6)	1053 (23)
Hemophilia or coagulation disorder	<5 (-)	<5 (-)	<5 (-)	<5 (-)	<5 (-)	<5 (-)	<5 (-)	<5 (-)	<5 (-)	16 (<1)
Heterosexual contact (3)	108 (50)	108 (46)	94 (41)	88 (38)	89 (44)	66 (36)	74 (42)	56 (32)	58 (47)	2017 (44)
Transfusion recipient	<5 (-)	<5 (-)	6 (3)	6 (3)	<5 (-)	<5 (-)	<5 (-)	<5 (-)	<5 (-)	278 (6)
Mother with/at risk for HIV	<5 (-)	<5 (-)	<5 (-)	<5 (-)	<5 (-)	<5 (-)	<5 (-)	<5 (-)	<5 (-)	102 (2)
Other/Undetermined	61 (28)	78 (33)	83 (36)	87 (38)	83 (41)	78 (43)	68 (39)	89 (51)	56 (45)	1133 (25)
Female subtotal	217	233	231	230	202	181	176	176	124	4599
[% of annual cases]	[12]	[13]	[14]	[13]	[12]	[13]	[13]	[13]	[13]	[9]
Total	1819	1763	1704	1834	1678	1442	1338	1306	967	54003

1. Exposure categories are ordered hierarchically, such that persons with multiple exposure categories are included in the category listed first.
2. Data are provisional due to reporting delay.
3. Heterosexual contact indicates contact with a person who is HIV-infected or at increased risk for HIV.

TABLE 6. ANNUAL WHITE CASES OF AIDS BY GENDER, EXPOSURE CATEGORY AND YEAR OF DIAGNOSIS, REPORTED BY JUNE 30, 2008, LOS ANGELES COUNTY

Exposure Category (1)	Year of Diagnosis									Cumulative 1982- 2008 No. (%)
	1999 No. (%)	2000 No. (%)	2001 No. (%)	2002 No. (%)	2003 No. (%)	2004 No. (%)	2005(2) No. (%)	2006(2) No. (%)	2007(2) No. (%)	
MALE										
Male-male sexual contact	391 (77)	383 (76)	346 (75)	411 (76)	427 (79)	306 (79)	267 (77)	284 (78)	186 (72)	19592 (83)
Injection drug user (IDU)	19 (4)	19 (4)	28 (6)	20 (4)	17 (3)	16 (4)	20 (6)	10 (3)	8 (3)	770 (3)
Male-male sexual contact/IDU	42 (8)	53 (11)	47 (10)	57 (11)	53 (10)	33 (9)	31 (9)	31 (9)	29 (11)	1873 (8)
Hemophilia or coagulation disorder	<5 (-)	<5 (-)	<5 (-)	<5 (-)	<5 (-)	<5 (-)	<5 (-)	<5 (-)	<5 (-)	101 (<1)
Heterosexual contact (3)	12 (2)	<5 (-)	7 (2)	<5 (-)	5 (1)	<5 (-)	<5 (-)	<5 (-)	<5 (-)	155 (1)
Transfusion recipient	<5 (-)	<5 (-)	<5 (-)	<5 (-)	<5 (-)	<5 (-)	<5 (-)	<5 (-)	<5 (-)	153 (1)
Mother with/at risk for HIV	<5 (-)	<5 (-)	<5 (-)	<5 (-)	<5 (-)	<5 (-)	<5 (-)	<5 (-)	<5 (-)	12 (<1)
Other/Undetermined	39 (8)	42 (8)	28 (6)	46 (9)	37 (7)	27 (7)	27 (8)	33 (9)	30 (12)	811 (3)
Male subtotal	506	501	459	540	539	386	349	363	257	23467
[% of annual cases]	[94]	[92]	[93]	[93]	[95]	[92]	[93]	[94]	[93]	[96]
FEMALE										
Injection drug user (IDU)	15 (43)	14 (32)	14 (41)	16 (42)	6 (20)	15 (44)	9 (36)	7 (32)	<5 (-)	329 (34)
Hemophilia or coagulation disorder	<5 (-)	<5 (-)	<5 (-)	<5 (-)	<5 (-)	<5 (-)	<5 (-)	<5 (-)	<5 (-)	8 (1)
Heterosexual contact (3)	17 (49)	20 (45)	12 (35)	10 (26)	9 (30)	9 (26)	5 (20)	10 (45)	6 (32)	384 (39)
Transfusion recipient	<5 (-)	<5 (-)	<5 (-)	<5 (-)	<5 (-)	<5 (-)	<5 (-)	<5 (-)	<5 (-)	86 (9)
Mother with/at risk for HIV	<5 (-)	<5 (-)	<5 (-)	<5 (-)	<5 (-)	<5 (-)	<5 (-)	<5 (-)	<5 (-)	13 (1)
Other/Undetermined	<5 (-)	10 (23)	7 (21)	12 (32)	13 (43)	9 (26)	9 (36)	5 (23)	12 (63)	159 (16)
Female subtotal	35	44	34	38	30	34	25	22	19	979
[% of annual cases]	[6]	[8]	[7]	[7]	[5]	[8]	[7]	[6]	[7]	[4]
Total	541	545	493	578	569	420	374	385	276	24446

1. Exposure categories are ordered hierarchically, such that persons with multiple exposure categories are included in the category listed first.
2. Data are provisional due to reporting delay.
3. Heterosexual contact indicates contact with a person who is HIV-infected or at increased risk for HIV.

TABLE 7. ANNUAL BLACK CASES OF AIDS BY GENDER, EXPOSURE CATEGORY AND YEAR OF DIAGNOSIS, REPORTED BY JUNE 30, 2008, LOS ANGELES COUNTY

Exposure Category (1)	Year of Diagnosis									Cumulative 1982- 2008 No. (%)
	1999 No. (%)	2000 No. (%)	2001 No. (%)	2002 No. (%)	2003 No. (%)	2004 No. (%)	2005(2) No. (%)	2006(2) No. (%)	2007(2) No. (%)	
MALE										
Male-male sexual contact	215 (60)	182 (54)	185 (57)	188 (58)	152 (61)	135 (57)	144 (56)	147 (62)	110 (62)	5935 (64)
Injection drug user (IDU)	22 (6)	34 (10)	29 (9)	27 (8)	19 (8)	15 (6)	19 (7)	8 (3)	5 (3)	930 (10)
Male-male sexual contact/IDU	30 (8)	29 (9)	29 (9)	23 (7)	16 (6)	18 (8)	13 (5)	23 (10)	12 (7)	890 (10)
Hemophilia or coagulation disorder	<5 (-)	<5 (-)	<5 (-)	<5 (-)	<5 (-)	<5 (-)	<5 (-)	<5 (-)	<5 (-)	22 (<1)
Heterosexual contact (3)	12 (3)	15 (4)	19 (6)	9 (3)	16 (6)	6 (3)	9 (3)	11 (5)	7 (4)	273 (3)
Transfusion recipient	<5 (-)	<5 (-)	<5 (-)	<5 (-)	<5 (-)	<5 (-)	<5 (-)	<5 (-)	<5 (-)	54 (1)
Mother with/at risk for HIV	<5 (-)	<5 (-)	<5 (-)	<5 (-)	<5 (-)	<5 (-)	<5 (-)	<5 (-)	<5 (-)	44 (<1)
Other/Undetermined	75 (21)	73 (22)	61 (19)	73 (23)	47 (19)	61 (26)	73 (28)	47 (20)	42 (24)	1161 (12)
Male subtotal	357	335	327	323	251	236	258	237	177	9309
[% of annual cases]	[79]	[80]	[81]	[81]	[77]	[76]	[77]	[78]	[77]	[84]
FEMALE										
Injection drug user (IDU)	18 (19)	21 (25)	17 (22)	21 (27)	16 (22)	10 (14)	13 (17)	8 (12)	<5 (-)	462 (27)
Hemophilia or coagulation disorder	<5 (-)	<5 (-)	<5 (-)	<5 (-)	<5 (-)	<5 (-)	<5 (-)	<5 (-)	<5 (-)	<5 (-)
Heterosexual contact (3)	44 (46)	33 (40)	28 (35)	20 (26)	32 (44)	22 (30)	32 (43)	19 (28)	24 (46)	703 (41)
Transfusion recipient	<5 (-)	<5 (-)	<5 (-)	<5 (-)	<5 (-)	<5 (-)	<5 (-)	<5 (-)	<5 (-)	60 (3)
Mother with/at risk for HIV	<5 (-)	<5 (-)	<5 (-)	<5 (-)	<5 (-)	<5 (-)	<5 (-)	<5 (-)	<5 (-)	36 (2)
Other/Undetermined	31 (32)	28 (34)	31 (39)	35 (45)	24 (33)	38 (52)	30 (40)	37 (54)	25 (48)	467 (27)
Female subtotal	96	83	79	78	73	73	75	68	52	1732
[% of annual cases]	[21]	[20]	[19]	[19]	[23]	[24]	[23]	[22]	[23]	[16]
Total	453	418	406	401	324	309	333	305	229	11041

1. Exposure categories are ordered hierarchically, such that persons with multiple exposure categories are included in the category listed first.
2. Data are provisional due to reporting delay.
3. Heterosexual contact indicates contact with a person who is HIV-infected or at increased risk for HIV.

TABLE 8. ANNUAL HISPANIC CASES OF AIDS BY GENDER, EXPOSURE CATEGORY AND YEAR OF DIAGNOSIS, REPORTED BY JUNE 30, 2008, LOS ANGELES COUNTY

Exposure Category (1)	Year of Diagnosis									Cumulative 1982-2008 No. (%)
	1999 No. (%)	2000 No. (%)	2001 No. (%)	2002 No. (%)	2003 No. (%)	2004 No. (%)	2005(2) No. (%)	2006(2) No. (%)	2007(2) No. (%)	
MALE										
Male-male sexual contact	412 (61)	403 (62)	384 (61)	428 (64)	397 (64)	361 (62)	309 (61)	303 (64)	240 (65)	10526 (69)
Injection drug user (IDU)	34 (5)	38 (6)	32 (5)	33 (5)	26 (4)	27 (5)	16 (3)	17 (4)	10 (3)	832 (5)
Male-male sexual contact/IDU	36 (5)	37 (6)	34 (5)	27 (4)	35 (6)	21 (4)	19 (4)	25 (5)	21 (6)	876 (6)
Hemophilia or coagulation disorder	<5 (-)	<5 (-)	<5 (-)	<5 (-)	<5 (-)	<5 (-)	<5 (-)	<5 (-)	<5 (-)	44 (<1)
Heterosexual contact (3)	27 (4)	35 (5)	39 (6)	42 (6)	36 (6)	15 (3)	18 (4)	8 (2)	7 (2)	443 (3)
Transfusion recipient	<5 (-)	<5 (-)	<5 (-)	6 (1)	<5 (-)	<5 (-)	<5 (-)	<5 (-)	<5 (-)	124 (1)
Mother with/at risk for HIV	<5 (-)	<5 (-)	<5 (-)	<5 (-)	<5 (-)	<5 (-)	<5 (-)	<5 (-)	<5 (-)	42 (<1)
Other/Undetermined	162 (24)	138 (21)	135 (21)	136 (20)	125 (20)	153 (26)	139 (28)	118 (25)	90 (24)	2287 (15)
Male subtotal	671	655	629	673	623	578	503	476	368	15174
[% of annual cases]	[89]	[87]	[85]	[87]	[87]	[90]	[88]	[86]	[88]	[90]
FEMALE										
Injection drug user (IDU)	10 (13)	8 (8)	12 (11)	8 (8)	5 (5)	7 (11)	7 (10)	6 (8)	<5 (-)	232 (13)
Hemophilia or coagulation disorder	<5 (-)	<5 (-)	<5 (-)	<5 (-)	<5 (-)	<5 (-)	<5 (-)	<5 (-)	<5 (-)	<5 (-)
Heterosexual contact (3)	42 (53)	52 (51)	49 (46)	56 (54)	42 (45)	32 (48)	33 (48)	26 (33)	26 (54)	867 (50)
Transfusion recipient	<5 (-)	<5 (-)	<5 (-)	<5 (-)	<5 (-)	<5 (-)	<5 (-)	<5 (-)	<5 (-)	112 (6)
Mother with/at risk for HIV	<5 (-)	<5 (-)	<5 (-)	<5 (-)	<5 (-)	<5 (-)	<5 (-)	<5 (-)	<5 (-)	52 (3)
Other/Undetermined	26 (33)	39 (39)	42 (39)	36 (35)	46 (49)	26 (39)	28 (41)	44 (56)	17 (35)	473 (27)
Female subtotal	80	101	107	104	93	66	69	78	48	1738
[% of annual cases]	[11]	[13]	[15]	[13]	[13]	[10]	[12]	[14]	[12]	[10]
Total	751	756	736	777	716	644	572	554	416	16912

1. Exposure categories are ordered hierarchically, such that persons with multiple exposure categories are included in the category listed first.
2. Data are provisional due to reporting delay.
3. Heterosexual contact indicates contact with a person who is HIV-infected or at increased risk for HIV.

TABLE 9. CUMULATIVE PEDIATRIC CASES OF AIDS BY EXPOSURE CATEGORY AND RACE/ETHNICITY
 REPORTED BY JUNE 30, 2008
 LOS ANGELES COUNTY

Pediatric (<13 years) Exposure Category (1)	Race/Ethnicity				
	White No. (%)	Black No. (%)	Hispanic No. (%)	Other No. (%)	Total No. (%)
Hemophilia/coagulation disorder	3 (7)	0 (0)	3 (3)	1 (14)	7 (3)
Mother with/at risk for HIV	21 (48)	71 (82)	83 (73)	2 (29)	177 (71)
Transfusion recipient	20 (45)	14 (16)	25 (22)	4 (57)	63 (25)
Other/Undetermined	0 (0)	2 (2)	2 (2)	0 (0)	4 (2)
Total [% of total]	44 [18]	87 [35]	113 [45]	7 [3]	251 [100]

TABLE 10. PEDIATRIC CASES OF AIDS BY RACE/ETHNICITY, EXPOSURE CATEGORY AND YEAR OF DIAGNOSIS
 REPORTED BY JUNE 30, 2008
 LOS ANGELES COUNTY

Pediatric (<13 years)	Year of Diagnosis					
	Before 2003 No. (%)	2003 No. (%)	2004 No. (%)	2005 (2) No. (%)	2006 (2) No. (%)	2007 (2) No. (%)
RACE/ETHNICITY						
White	42 (17)	1 (100)	0 (0)	1 (50)	0 (-)	0 (-)
Black	85 (35)	0 (0)	1 (50)	0 (0)	0 (-)	0 (-)
Hispanic	112 (46)	0 (0)	0 (0)	1 (50)	0 (-)	0 (-)
Other	6 (2)	0 (0)	1 (50)	0 (0)	0 (-)	0 (-)
EXPOSURE CATEGORY (1)						
Hemophilia/coagulation disorder	7 (3)	0 (0)	0 (0)	0 (0)	0 (-)	0 (-)
Mother with/at risk for HIV	171 (70)	1 (100)	2 (100)	2 (100)	0 (-)	0 (-)
Transfusion recipient	63 (26)	0 (0)	0 (0)	0 (0)	0 (-)	0 (-)
Other/Undetermined	4 (2)	0 (0)	0 (0)	0 (0)	0 (-)	0 (-)
Total [% of total]	245 [98]	1 [<1]	2 [1]	2 [1]	0 [-]	0 [-]

1. Exposure categories are ordered hierarchically. Except for the combination listed, persons with multiple exposure categories are included in the category listed first.
2. Data are provisional due to reporting delay.

TABLE 11. CUMULATIVE ADULT/ADOLESCENT AND PEDIATRIC CASES OF INJECTION DRUG-ASSOCIATED AIDS
 BY GENDER, EXPOSURE CATEGORY AND RACE/ETHNICITY
 REPORTED BY JUNE 30, 2008
 LOS ANGELES COUNTY

Exposure Category (1)	Race/Ethnicity				
	White No. (%)	Black No. (%)	Hispanic No. (%)	Other No. (%)	Total (2) No. (%)
ADULT/ADOLESCENT					
Male					
Injection drug user (IDU)	770 (28)	930 (49)	832 (45)	28 (26)	2564 (39)
Male-male sexual contact/IDU	1873 (69)	890 (47)	876 (48)	74 (70)	3722 (57)
Sex with IDU	57 (2)	82 (4)	121 (7)	<5 (-)	264 (4)
Mother was IDU	<5 (-)	<5 (-)	<5 (-)	<5 (-)	5 (<1)
Mother had sex with IDU	<5 (-)	<5 (-)	<5 (-)	<5 (-)	<5 (-)
Adult male subtotal	2702	1904	1831	106	6557
[% of subtotal]	[41]	[29]	[28]	[2]	[100]
Female					
Injection drug user (IDU)	329 (76)	462 (76)	232 (63)	23 (70)	1053 (73)
Sex with IDU	103 (24)	146 (24)	135 (37)	10 (30)	394 (27)
Mother was IDU	<5 (-)	<5 (-)	<5 (-)	<5 (-)	<5 (-)
Mother had sex with IDU	<5 (-)	<5 (-)	<5 (-)	<5 (-)	<5 (-)
Adult female subtotal	433	609	368	33	1450
[% of subtotal]	[30]	[42]	[25]	[2]	[100]
Adult subtotal	3135	2513	2199	139	8007
[% of subtotal]	[39]	[31]	[27]	[2]	[100]
PEDIATRIC (<13 YEARS)					
Mother was IDU	8 (62)	17 (68)	7 (33)	<5 (-)	32 (53)
Mother had sex with IDU	5 (38)	8 (32)	14 (67)	<5 (-)	28 (47)
Pediatric subtotal	13	25	21	<5	60
[% of subtotal]	[22]	[42]	[35]	[-]	[100]
Total	3148	2538	2220	140	8067
[% of total]	[39]	[31]	[28]	[2]	[100]

1. Exposure categories are ordered hierarchically. Except for the combination listed, persons with multiple exposure categories are included in the category listed first.
2. Total includes persons who have multiple races/ethnicities or have missing information on race/ethnicity.

TABLE 12. CUMULATIVE ADULT/ADOLESCENT AIDS INDICATOR CONDITIONS AT TIME OF DIAGNOSIS (1) BY GENDER
 REPORTED BY JUNE 30, 2008
 LOS ANGELES COUNTY

Indicator Condition (2)	Gender		Total No. (%)
	Male No. (%)	Female No. (%)	
Candidiasis of bronchi, trachea, or lungs	488 (1)	52 (1)	540 (1)
Candidiasis of esophagus	2458 (5)	279 (6)	2737 (5)
Carcinoma, invasive cervical	- (-)	24 (1)	24 (<1)
Coccidioidomycosis, disseminated or extrapulmonary	119 (<1)	9 (<1)	128 (<1)
Cryptococcosis, extrapulmonary	1739 (4)	97 (2)	1836 (3)
Cryptosporidiosis, chronic intestinal	873 (2)	34 (1)	907 (2)
Cytomegalovirus disease other than retinitis	1418 (3)	80 (2)	1498 (3)
Cytomegalovirus retinitis	941 (2)	52 (1)	993 (2)
HIV encephalopathy	1048 (2)	65 (1)	1113 (2)
Herpes simplex: chronic ulcers, pneumonitis or esophagitis	1438 (3)	143 (3)	1581 (3)
Histoplasmosis, disseminated or extrapulmonary	169 (<1)	12 (<1)	181 (<1)
Isosporiasis, chronic intestinal	160 (<1)	9 (<1)	169 (<1)
Kaposi's sarcoma	4789 (10)	33 (1)	4822 (9)
Lymphoma, Burkitt's	248 (1)	14 (<1)	262 (<1)
Lymphoma, immunoblastic	716 (1)	27 (1)	743 (1)
Lymphoma, primary in brain	163 (<1)	<5 (-)	166 (<1)
Mycobacterium avium or M. kansasii, disseminated	1330 (3)	65 (1)	1395 (3)
M. tuberculosis, pulmonary	1157 (2)	145 (3)	1302 (2)
M. tuberculosis, disseminated or extrapulmonary	816 (2)	100 (2)	916 (2)
Mycobacterium, other or unidentified species	290 (1)	20 (<1)	310 (1)
Pneumocystis carinii pneumonia	12153 (25)	738 (16)	12891 (24)
Pneumonia, recurrent	236 (<1)	49 (1)	285 (1)
Progressive multifocal leukoencephalopathy	206 (<1)	7 (<1)	213 (<1)
Salmonella septicemia, recurrent	72 (<1)	5 (<1)	77 (<1)
Toxoplasmosis of the brain	1088 (2)	88 (2)	1176 (2)
Wasting syndrome	3116 (6)	231 (5)	3347 (6)
CD4 < 200ul	26521 (54)	3091 (69)	29612 (55)
Total	49266	4486	53752

1. The table provides only a minimum estimate of indicator conditions because date of diagnosis may be missing for some indicator conditions.
2. Persons may have more than one condition at time of AIDS diagnosis.

TABLE 13. ANNUAL CASES OF AIDS AND RATES PER 100,000 (1)
 BY SERVICE PLANNING AREA/HEALTH DISTRICT OF RESIDENCE AND YEAR OF DIAGNOSIS
 REPORTED BY JUNE 30, 2008
 LOS ANGELES COUNTY

Service Planning Area/ Health District	Year of Diagnosis										Cumulative Total (3) No. (%)	
	2003		2004		2005 (2)		2006 (2)		2007 (2)			
	No.	(%) Rate	No.	(%) Rate	No.	(%) Rate	No.	(%) Rate	No.	(%) Rate		
Antelope Valley[1]	14	(1) 4	18	(1) 5	20	(1) 6	16	(1) 5	16	(2) 4	540	(1)
Antelope Valley	14	(1) 4	18	(1) 5	20	(1) 6	16	(1) 5	16	(2) 4	540	(1)
San Fernando[2]	237	(14) 11	158	(11) 7	158	(12) 7	164	(13) 8	105	(11) 5	7654	(14)
East Valley	82	(5) 18	50	(3) 11	48	(4) 11	63	(5) 14	39	(4) 9	2953	(5)
Glendale	18	(1) 5	27	(2) 8	16	(1) 5	33	(3) 9	17	(2) 5	1204	(2)
San Fernando	29	(2) 7	22	(2) 5	25	(2) 5	18	(1) 4	10	(1) 2	714	(1)
West Valley	108	(6) 13	59	(4) 7	69	(5) 8	50	(4) 6	39	(4) 4	2783	(5)
San Gabriel [3]	131	(8) 7	128	(9) 7	90	(7) 5	91	(7) 5	60	(6) 3	3979	(7)
Alhambra	22	(1) 6	20	(1) 6	13	(1) 4	13	(1) 4	9	(1) 3	683	(1)
El Monte	38	(2) 8	38	(3) 8	29	(2) 6	24	(2) 5	11	(1) 2	904	(2)
Foothill	15	(1) 5	15	(1) 5	11	(1) 4	13	(1) 4	9	(1) 3	654	(1)
Pasadena	18	(1) 12	12	(1) 8	7	(1) 5	16	(1) 11	12	(1) 8	720	(1)
Pomona	38	(2) 7	43	(3) 8	30	(2) 5	25	(2) 4	19	(2) 3	1018	(2)
Metro[4]	579	(35) 48	422	(29) 34	404	(30) 32	409	(31) 32	288	(30) 23	20991	(39)
Central	194	(12) 55	154	(11) 43	161	(12) 44	171	(13) 46	121	(13) 33	6290	(12)
Hollywood-Wilshire	335	(20) 63	223	(15) 42	197	(15) 37	194	(15) 36	131	(14) 24	12355	(23)
Northeast	50	(3) 15	45	(3) 13	46	(3) 13	44	(3) 13	36	(4) 10	2346	(4)
West[5]	99	(6) 16	66	(5) 10	56	(4) 9	60	(5) 9	51	(5) 8	3161	(6)
West	99	(6) 16	66	(5) 10	56	(4) 9	60	(5) 9	51	(5) 8	3161	(6)
South[6]	199	(12) 20	184	(13) 18	186	(14) 18	169	(13) 16	119	(12) 11	5466	(10)
Compton	36	(2) 13	34	(2) 12	31	(2) 11	25	(2) 9	26	(3) 9	940	(2)
South	21	(1) 12	34	(2) 19	42	(3) 23	28	(2) 15	18	(2) 10	909	(2)
Southeast	37	(2) 22	30	(2) 17	35	(3) 20	30	(2) 17	13	(1) 7	834	(2)
Southwest	105	(6) 28	86	(6) 23	78	(6) 20	86	(7) 23	62	(6) 16	2783	(5)
East[7]	110	(7) 8	107	(7) 8	83	(6) 6	74	(6) 5	49	(5) 4	3184	(6)
Bellflower	19	(1) 5	20	(1) 5	15	(1) 4	11	(1) 3	7	(1) 2	662	(1)
East Los Angeles	26	(2) 12	24	(2) 11	22	(2) 10	15	(1) 7	10	(1) 4	723	(1)
San Antonio	45	(3) 10	36	(2) 8	27	(2) 6	29	(2) 6	23	(2) 5	1134	(2)
Whittier	20	(1) 6	27	(2) 8	19	(1) 6	19	(1) 6	9	(1) 3	665	(1)
South Bay[8]	309	(18) 20	359	(25) 23	339	(25) 21	322	(25) 20	279	(29) 17	8866	(16)
Harbor	19	(1) 9	31	(2) 15	23	(2) 11	22	(2) 10	18	(2) 8	529	(1)
Inglewood	46	(3) 11	56	(4) 13	49	(4) 11	50	(4) 11	42	(4) 10	1627	(3)
Long Beach	216	(13) 45	243	(17) 50	238	(18) 48	229	(18) 46	196	(20) 40	5716	(11)
Torrance	28	(2) 6	29	(2) 6	29	(2) 6	21	(2) 4	23	(2) 5	994	(2)
Total (4)	1678	(100) 17	1442	(100) 14	1338	(100) 13	1306	(100) 13	967	(100) 9	54003	(100)

1. Rates are based on population estimates from 2003-2007. Rates based on observations fewer than 20 may not be reliable (see Technical Notes, page 29).
2. Data are provisional due to reporting delay.
3. Cumulative total includes persons diagnosed since 1982.
4. Total includes persons with no information on Service Planning Area/Health District.

TABLE 14. ANNUAL CASES OF AIDS AND RATES PER 100,000 (1) BY CITY/AREA (2) OF RESIDENCE AND YEAR OF DIAGNOSIS
 TOP 35 CITIES (3) RANKED BY 2007 RATE, REPORTED BY JUNE 30, 2008
 LOS ANGELES COUNTY

City/Area	Year of Diagnosis					Cumulative 1982-2008 No.
	2003 No. (Rate)	2004 No. (Rate)	2005 (4) No. (Rate)	2006 (4) No. (Rate)	2007 (4) No. (Rate)	
Wholesale	56 (98.4)	31 (53.3)	52 (88.6)	59 (99.5)	46 (77.2)	1325
West Hollywood	84 (224.0)	40 (105.9)	35 (92.8)	39 (104.2)	20 (53.4)	3048
Downtown	17 (76.7)	17 (75.5)	8 (35.3)	11 (48.3)	10 (43.7)	394
Si vlke- chinatn	49 (58.9)	36 (42.7)	28 (32.9)	22 (25.7)	26 (30.6)	1833
Long Beach	203 (41.9)	226 (46.1)	217 (44.1)	184 (37.3)	151 (30.5)	5466
Hollywood	142 (58.7)	103 (42.2)	100 (40.6)	104 (42.0)	71 (28.7)	6338
Los Feliz	20 (46.0)	13 (29.8)	17 (38.7)	14 (31.8)	11 (24.9)	1233
Venice	10 (26.2)	9 (23.6)	6 (15.7)	<5 (-)	8 (20.7)	423
Crenshaw	22 (30.8)	18 (24.8)	14 (19.3)	17 (23.4)	15 (20.5)	663
Vermont Square	12 (16.1)	11 (14.6)	21 (27.6)	17 (22.2)	15 (19.4)	479
Pac Palisades	<5 (-)	<5 (-)	<5 (-)	<5 (-)	5 (18.5)	69
Studio City	13 (25.0)	7 (13.5)	<5 (-)	6 (11.6)	9 (17.1)	773
Lawndale	<5 (-)	<5 (-)	<5 (-)	6 (18.0)	5 (14.9)	119
Inglewood	10 (8.5)	20 (17.0)	11 (9.3)	16 (13.5)	17 (14.3)	587
San Pedro	14 (18.3)	21 (27.4)	17 (22.1)	14 (18.2)	11 (14.1)	272
Boyle Heights	13 (13.8)	17 (17.5)	19 (19.2)	17 (16.9)	13 (12.9)	491
Eagle Rk- glasl	19 (25.4)	9 (11.9)	<5 (-)	11 (14.3)	10 (12.8)	631
Westmont- w Aths	5 (13.2)	8 (20.6)	10 (25.5)	5 (12.6)	5 (12.6)	187
Miracle Mile S	17 (34.6)	11 (22.3)	11 (22.3)	14 (28.4)	6 (12.1)	635
Adams-1a Brea	14 (24.7)	17 (29.6)	7 (12.1)	10 (17.2)	7 (11.9)	442
S Vermont	22 (20.4)	19 (17.4)	26 (23.6)	21 (19.0)	13 (11.6)	645
Compton	10 (10.8)	11 (11.8)	10 (10.6)	9 (9.5)	10 (10.5)	335
N Hollywood	29 (22.2)	25 (18.9)	25 (18.8)	24 (17.9)	14 (10.5)	1337
Wilshir Ctr S	29 (30.1)	16 (16.3)	15 (15.1)	11 (10.9)	10 (10.0)	649
Santa Monica	17 (18.9)	6 (6.6)	9 (9.9)	8 (8.8)	9 (9.9)	565
Green Meadows	7 (11.8)	10 (16.6)	12 (19.7)	9 (14.6)	6 (9.9)	317
Palms	14 (23.3)	8 (13.2)	7 (11.5)	<5 (-)	6 (9.7)	285
Westlake	33 (25.9)	28 (21.4)	18 (13.5)	31 (22.9)	13 (9.6)	1039
Wilshir Ctr N	18 (21.8)	15 (17.8)	17 (19.9)	10 (11.6)	8 (9.3)	761
W Adms- expo Pk	30 (22.9)	22 (16.6)	21 (15.7)	28 (20.8)	12 (8.8)	852
Sun Valley	12 (15.0)	7 (8.6)	<5 (-)	11 (13.2)	7 (8.5)	273
Lynwood	12 (16.3)	<5 (-)	<5 (-)	<5 (-)	6 (8.1)	182
Hawthorne	10 (10.9)	12 (13.1)	<5 (-)	8 (8.6)	7 (7.5)	281
Reseda	11 (10.8)	<5 (-)	5 (4.8)	6 (5.8)	8 (7.5)	315
Pasadena	16 (11.4)	12 (8.4)	<5 (-)	15 (10.5)	10 (7.0)	684

1. Rates are based on population estimates for 2003-2007. Rates based on observations fewer than 20 may not be reliable (see Technical Notes, page 29).
2. The city of Los Angeles is broken down into "areas" or geographic units with more than 15,000 residents. Cities and areas are approximately defined by aggregating the associated census tracts based on the location of their centroid.
3. Includes cities and areas that had more than 15,000 residents and at least 5 persons diagnosed with AIDS in 2007.
4. Data are provisional due to reporting delay.

TABLE 15. REPORTED NUMBER AND RATES PER 100,000 (1) FOR PERSONS DIAGNOSED WITH AIDS AND PERSONS LIVING WITH AIDS AS OF DECEMBER 31, 2007
BY GENDER, AGE, RACE/ETHNICITY AND EXPOSURE CATEGORY, REPORTED BY JUNE 30, 2008, LOS ANGELES COUNTY

	Male						Female						Total					
	Year 2007(2)		Living(2)		Cumulative(3)		Year 2007(2)		Living(2)		Cumulative(3)		Year 2007(2)		Living(2)		Cumulative(3)	
	No.	(%) Rate	No.	(%) Rate	No.	(%)	No.	(%) Rate	No.	(%) Rate	No.	(%)	No.	(%) Rate	No.	(%) Rate	No.	(%)
AGE GROUP (4)																		
<13	<5	(-) -	13	(<1) 1	138	(<1)	<5	(-) -	7	(<1) 1	113	(2)	<5	(-) -	20	(<1) 1	251	(<1)
13-19	6	(1) 1	34	(<1) 6	219	(<1)	<5	(-) -	23	(1) 4	68	(1)	6	(1) 1	57	(<1) 5	287	(1)
20-29	140	(17) 19	695	(3) 92	7875	(16)	26	(21) 4	140	(6) 20	945	(21)	166	(17) 11	835	(4) 57	8820	(16)
30-39	283	(34) 35	3772	(18) 473	21735	(44)	30	(24) 4	596	(24) 77	1667	(36)	313	(32) 20	4368	(19) 278	23402	(43)
40-49	289	(34) 37	9103	(45) 1172	13307	(27)	39	(31) 5	1014	(40) 132	1097	(24)	328	(34) 21	10117	(44) 654	14404	(27)
50-59	95	(11) 16	5115	(25) 883	4639	(9)	23	(19) 4	511	(20) 82	479	(10)	118	(12) 10	5626	(25) 468	5118	(9)
60+	30	(4) 5	1686	(8) 265	1491	(3)	6	(5) 1	235	(9) 28	230	(5)	36	(4) 2	1921	(8) 131	1721	(3)
RACE/ETHNICITY (5)																		
White	257	(30) 17	7720	(38) 499	23467	(48)	19	(15) 1	440	(17) 28	979	(21)	276	(29) 9	8160	(36) 262	24446	(45)
Black	177	(21) 40	3870	(19) 882	9309	(19)	52	(42) 10	906	(36) 180	1732	(38)	229	(24) 24	4776	(21) 506	11041	(20)
Hispanic	368	(44) 15	8050	(39) 327	15174	(31)	48	(39) 2	1091	(43) 45	1738	(38)	416	(43) 9	9141	(40) 187	16912	(31)
Asian	34	(4) 5	628	(3) 96	1159	(2)	<5	(-) -	60	(2) 8	109	(2)	38	(4) 3	688	(3) 50	1268	(2)
AI/AN	<5	(-) -	84	(<1) 563	192	(<1)	<5	(-) -	22	(1) 139	30	(1)	<5	(-) -	106	(<1) 345	222	(<1)
EXPOSURE CATEGORY (6)																		
MSM	560	(66)	14870	(73)	37162	(75)	-	(-)	-	(-)	-	(-)	560	(58)	14870	(65)	37162	(69)
IDU	24	(3)	871	(4)	2564	(5)	8	(6)	478	(19)	1053	(23)	32	(3)	1349	(6)	3617	(7)
MSM/IDU	63	(7)	1520	(7)	3722	(8)	-	(-)	-	(-)	-	(-)	63	(7)	1520	(7)	3722	(7)
Hemophi/Transfusion	<5	(-)	114	(1)	533	(1)	<5	(-)	79	(3)	294	(6)	<5	(-)	193	(1)	827	(2)
Heterosexual contact	17	(2)	526	(3)	894	(2)	58	(47)	1224	(48)	2017	(44)	75	(8)	1750	(8)	2911	(5)
Mother w/at HIV risk	<5	(-)	51	(<1)	101	(<1)	<5	(-)	39	(2)	102	(2)	<5	(-)	90	(<1)	203	(<1)
Other/Undetermined	176	(21)	2466	(12)	4428	(9)	56	(45)	706	(28)	1133	(25)	232	(24)	3172	(14)	5561	(10)
Total (7)	843	[87] 16	20418	[89] 399	49404	[91]	124	[13] 2	2526	[11] 48	4599	[9]	967	[100] 9	22944	[100] 222	54003	[100]

1. Rates based on observations fewer than 20 may not be reliable (see Technical Notes, page 29).
2. Data are provisional due to reporting delay. 3. Include persons reported as of June 30, 2008.
4. Age distributions for year 2007 and cumulative cases are based on age at the time of AIDS diagnosis while the age distribution for persons living with AIDS is based on age as of December 31, 2007.
5. Does not include persons who have multiple races/ethnicities or have missing information on race/ethnicity.
6. Rate for exposure category is not available, because denominator can only be estimated. 7. Percent of total cases that are male and female is shown in this row.

TABLE 16. CUMULATIVE NUMBER OF PERSONS DIAGNOSED WITH AIDS BY GENDER, AGE, RACE/ETHNICITY AND EXPOSURE CATEGORY FOR EACH SERVICE PLANNING AREA (SPA)
 REPORTED BY JUNE 30, 2008, LOS ANGELES COUNTY, 1982-2008

Service Planning Area	Antelope Valley No. (%)	San Fernando No. (%)	San Gabriel No. (%)	Metro No. (%)	West No. (%)	South No. (%)	East No. (%)	South Bay/LB No. (%)	Total (1) No. (%)
GENDER									
Male	458 (85)	7086 (93)	3494 (88)	19971 (95)	2969 (94)	4503 (82)	2800 (88)	7969 (90)	49404 (91)
Female	82 (15)	568 (7)	485 (12)	1020 (5)	192 (6)	963 (18)	384 (12)	897 (10)	4599 (9)
AGE GROUP (2)									
<13	7 (1)	34 (<1)	32 (1)	54 (<1)	10 (<1)	45 (1)	28 (1)	40 (<1)	251 (<1)
13-19	6 (1)	29 (<1)	31 (1)	75 (<1)	7 (<1)	57 (1)	27 (1)	54 (1)	287 (1)
20-29	93 (17)	1110 (15)	712 (18)	3243 (15)	434 (14)	1087 (20)	639 (20)	1464 (17)	8820 (16)
30-39	211 (39)	3252 (42)	1661 (42)	9391 (45)	1423 (45)	2158 (39)	1332 (42)	3900 (44)	23402 (43)
40-49	147 (27)	2123 (28)	988 (25)	5760 (27)	853 (27)	1395 (26)	744 (23)	2361 (27)	14404 (27)
50-59	53 (10)	832 (11)	378 (9)	1917 (9)	303 (10)	524 (10)	288 (9)	813 (9)	5118 (9)
60+	23 (4)	274 (4)	177 (4)	551 (3)	131 (4)	200 (4)	126 (4)	234 (3)	1721 (3)
RACE/ETHNICITY (3)									
White	273 (51)	4627 (60)	1385 (35)	10757 (51)	2098 (66)	282 (5)	673 (21)	4259 (48)	24446 (45)
Black	137 (25)	704 (9)	657 (17)	3270 (16)	446 (14)	3467 (63)	193 (6)	2135 (24)	11041 (20)
Hispanic	119 (22)	2097 (27)	1711 (43)	6353 (30)	525 (17)	1676 (31)	2231 (70)	2167 (24)	16912 (31)
Asian	7 (1)	178 (2)	198 (5)	467 (2)	70 (2)	24 (<1)	66 (2)	256 (3)	1268 (2)
AI/AN	<5 (-)	30 (<1)	15 (<1)	93 (<1)	15 (<1)	13 (<1)	17 (1)	35 (<1)	222 (<1)
EXPOSURE CATEGORY									
MSM	255 (47)	5401 (71)	2409 (61)	15953 (76)	2393 (76)	2743 (50)	1882 (59)	6028 (68)	37162 (69)
IDU	81 (15)	469 (6)	359 (9)	924 (4)	157 (5)	597 (11)	261 (8)	753 (8)	3617 (7)
MSM/IDU	47 (9)	434 (6)	233 (6)	1576 (8)	177 (6)	350 (6)	179 (6)	701 (8)	3722 (7)
Hemophi/Transfusion	20 (4)	151 (2)	103 (3)	151 (1)	63 (2)	106 (2)	96 (3)	133 (2)	827 (2)
Heterosexual contact	56 (10)	373 (5)	303 (8)	585 (3)	121 (4)	573 (10)	249 (8)	646 (7)	2911 (5)
Mother w/at HIV risk	<5 (-)	22 (<1)	26 (1)	47 (<1)	9 (<1)	42 (1)	20 (1)	34 (<1)	203 (<1)
Other/Undetermined	78 (14)	804 (11)	546 (14)	1755 (8)	241 (8)	1055 (19)	497 (16)	571 (6)	5561 (10)
Total [% of total]	540 [1]	7654 [14]	3979 [7]	20991 [39]	3161 [6]	5466 [10]	3184 [6]	8866 [16]	54003 [100]

1. Total includes persons with no information on SPA.
2. Age at time of diagnosis.
3. Does not include cases who have multiple races/ethnicities or have missing information on race/ethnicity.

TABLE 17. NUMBER OF PERSONS DIAGNOSED WITH AIDS (1) AND RATE PER 100,000 (1, 2) IN YEAR 2007
 BY GENDER, AGE, RACE/ETHNICITY AND EXPOSURE CATEGORY FOR EACH SERVICE PLANNING AREA (SPA)
 REPORTED BY JUNE 30, 2008, LOS ANGELES COUNTY

Service Planning Area	Antelope Valley No. (%) Rate	San Fernando No. (%) Rate	San Gabriel No. (%) Rate	Metro No. (%) Rate	West No. (%) Rate	South No. (%) Rate	East No. (%) Rate	South Bay/LB No. (%) Rate	Total (3) No. (%) Rate
GENDER									
Male	13 (81) 7	93 (89) 9	55 (92) 6	264 (92) 41	46 (90) 15	93 (78) 18	42 (86) 6	237 (85) 30	843 (87) 16
Female	<5 (-) -	12 (11) 1	5 (8) 1	24 (8) 4	5 (10) 2	26 (22) 5	7 (14) 1	42 (15) 5	124 (13) 2
AGE GROUP									
<30	<5 (-) -	18 (17) 2	11 (18) 1	43 (15) 8	<5 (-) -	24 (20) 4	9 (18) 1	60 (22) 9	172 (18) 4
30-39	<5 (-) -	36 (34) 11	10 (17) 4	104 (36) 43	25 (49) 21	40 (34) 27	13 (27) 6	81 (29) 34	313 (32) 20
40-49	6 (38) 11	29 (28) 8	28 (47) 10	95 (33) 47	18 (35) 16	38 (32) 29	19 (39) 10	95 (34) 38	328 (34) 21
50+	<5 (-) -	22 (21) 4	11 (18) 2	46 (16) 15	5 (10) 2	17 (14) 9	8 (16) 2	43 (15) 10	154 (16) 6
RACE/ETHNICITY (4)									
White	<5 (-) -	39 (37) 4	18 (30) 4	86 (30) 33	31 (61) 8	<5 (-) -	<5 (-) -	93 (33) 18	276 (29) 9
Black	8 (50) 16	15 (14) 20	8 (13) 9	50 (17) 71	11 (22) 26	65 (55) 19	<5 (-) -	70 (25) 28	229 (24) 24
Hispanic	5 (31) 4	41 (39) 5	28 (47) 3	141 (49) 20	5 (10) 4	52 (44) 8	43 (88) 4	101 (36) 17	416 (43) 9
Other (5)	<5 (-) -	9 (9) 4	6 (10) 1	9 (3) 4	<5 (-) -	<5 (-) -	<5 (-) -	14 (5) 6	42 (4) 3
EXPOSURE CATEGORY (6)									
MSM	<5 (-)	53 (50)	26 (43)	174 (60)	30 (59)	54 (45)	26 (53)	193 (69)	560 (58)
IDU	<5 (-)	6 (6)	<5 (-)	5 (2)	<5 (-)	<5 (-)	<5 (-)	9 (3)	32 (3)
MSM/IDU	<5 (-)	12 (11)	<5 (-)	26 (9)	<5 (-)	<5 (-)	<5 (-)	14 (5)	63 (7)
Hemophi/Transfusion	<5 (-)	<5 (-)	<5 (-)	<5 (-)	<5 (-)	<5 (-)	<5 (-)	<5 (-)	<5 (-)
Heterosexual contact	7 (44)	10 (10)	<5 (-)	8 (3)	<5 (-)	16 (13)	<5 (-)	29 (10)	75 (8)
Mother w/at HIV risk	<5 (-)	<5 (-)	<5 (-)	<5 (-)	<5 (-)	<5 (-)	<5 (-)	<5 (-)	<5 (-)
Other/Undetermined	<5 (-)	23 (22)	27 (45)	72 (25)	14 (27)	43 (36)	16 (33)	33 (12)	232 (24)
Total [% of total]	16 [2] 4	105 [11] 5	60 [6] 3	288 [30] 23	51 [5] 8	119 [12] 11	49 [5] 4	279 [29] 17	967 [100] 9

1. Data are provisional due to reporting delay.
2. Rates based on observations fewer than 20 may not be reliable (see Technical Notes, page 29).
3. Total includes persons with no information on SPA.
4. Does not include persons who have multiple races/ethnicities or have missing information on race/ethnicity.
5. Other includes Asian, Pacific Islander, American Indian and Alaskan Native.
6. Rate for exposure category is not available, because denominator can only be estimated.

TABLE 18. PERSONS LIVING WITH AIDS AND RATE PER 100,000 (1) AT THE END OF CALENDAR YEAR, BY GENDER, AGE, RACE/ETHNICITY AND EXPOSURE CATEGORY REPORTED BY JUNE 30, 2008, LOS ANGELES COUNTY

Calendar Year	2000			2001			2002			2003			2004			2005 (2)			2006 (2)			2007 (2)		
	No.	(%)	Rate	No.	(%)	Rate	No.	(%)	Rate	No.	(%)	Rate	No.	(%)	Rate	No.	(%)	Rate	No.	(%)	Rate	No.	(%)	Rate
GENDER																								
Male	14872	(90)	315	15679	(89)	326	16739	(89)	342	17665	(89)	356	18356	(89)	366	19024	(89)	376	19839	(89)	390	20418	(89)	399
Female	1706	(10)	35	1858	(11)	38	1999	(11)	40	2115	(11)	42	2211	(11)	43	2312	(11)	45	2436	(11)	47	2526	(11)	48
AGE GROUP (3)																								
<13	48	(<1)	2	43	(<1)	2	45	(<1)	2	42	(<1)	2	40	(<1)	2	36	(<1)	2	28	(<1)	1	20	(<1)	1
13-19	63	(<1)	6	72	(<1)	7	64	(<1)	6	66	(<1)	6	64	(<1)	6	54	(<1)	5	63	(<1)	6	57	(<1)	5
20-29	898	(5)	61	873	(5)	59	864	(5)	59	871	(4)	60	822	(4)	57	850	(4)	59	849	(4)	59	835	(4)	57
30-39	6310	(38)	397	6173	(35)	380	6079	(32)	371	5892	(30)	360	5534	(27)	340	5115	(24)	317	4766	(21)	299	4368	(19)	278
40-49	6264	(38)	462	6913	(39)	492	7654	(41)	530	8356	(42)	564	8930	(43)	590	9443	(44)	616	9881	(44)	639	10117	(44)	654
50-59	2333	(14)	253	2698	(15)	280	3114	(17)	309	3492	(18)	333	3946	(19)	361	4456	(21)	392	5076	(23)	433	5626	(25)	468
60+	662	(4)	53	765	(4)	61	918	(5)	71	1061	(5)	80	1231	(6)	90	1382	(6)	99	1612	(7)	113	1921	(8)	131
RACE/ETHNICITY (4)																								
White	6448	(39)	208	6645	(38)	212	7020	(37)	224	7368	(37)	235	7561	(37)	242	7727	(36)	248	7972	(36)	258	8160	(36)	262
Black	3531	(21)	374	3720	(21)	392	3946	(21)	415	4091	(21)	431	4225	(21)	446	4415	(21)	469	4635	(21)	496	4776	(21)	506
Hispanic	6062	(37)	142	6587	(38)	150	7129	(38)	158	7631	(39)	165	8045	(39)	171	8411	(39)	176	8835	(40)	181	9141	(40)	187
Asian	405	(2)	33	440	(3)	35	488	(3)	38	531	(3)	41	571	(3)	43	616	(3)	46	659	(3)	48	688	(3)	50
AI/AN	81	(<1)	290	88	(1)	311	95	(1)	327	99	(1)	334	101	(<1)	334	100	(<1)	326	103	(<1)	332	106	(<1)	345
EXPOSURE CATEGORY (5)																								
MSM	10997	(66)		11535	(66)		12269	(65)		12953	(65)		13441	(65)		13907	(65)		14469	(65)		14870	(65)	
IDU	1184	(7)		1218	(7)		1269	(7)		1282	(6)		1294	(6)		1317	(6)		1341	(6)		1349	(6)	
MSM/IDU	1214	(7)		1272	(7)		1350	(7)		1394	(7)		1416	(7)		1428	(7)		1480	(7)		1520	(7)	
Hemophi/Transfusion	182	(1)		191	(1)		194	(1)		194	(1)		195	(1)		194	(1)		194	(1)		193	(1)	
Heterosexual contact	1204	(7)		1318	(8)		1416	(8)		1530	(8)		1572	(8)		1634	(8)		1697	(8)		1750	(8)	
Mother w/at HIV risk	67	(<1)		72	(<1)		76	(<1)		79	(<1)		81	(<1)		83	(<1)		88	(<1)		90	(<1)	
Other/Undetermined	1730	(10)		1931	(11)		2164	(12)		2348	(12)		2568	(12)		2773	(13)		3006	(13)		3172	(14)	
Total	16578	(100)	173	17537	(100)	180	18738	(100)	189	19780	(100)	197	20567	(100)	203	21336	(100)	209	22275	(100)	217	22944	(100)	222

1. Rates that are based on observations fewer than 20 may not be reliable (see Technical Notes, page 29).
2. Data are provisional due to reporting delay.
3. Age as of the end of year.
4. Does not include persons of multiple races/ethnicities or unknown race/ethnicity.
5. Rate for exposure category is not available, because denominator can only be estimated.

TABLE 19. PERSONS LIVING WITH AIDS AND RATE PER 100,000 (1) AS OF DECEMBER 31, 2007
 BY SERVICE PLANNING AREA, GENDER, AGE, RACE/ETHNICITY AND EXPOSURE CATEGORY, REPORTED BY JUNE 30, 2008, LOS ANGELES COUNTY

Service Planning Area	Antelope Valley			San Fernando			San Gabriel			Metro			West			South			East			South Bay/LB			Total (2)		
	No.	(%)	Rate	No.	(%)	Rate	No.	(%)	Rate	No.	(%)	Rate	No.	(%)	Rate	No.	(%)	Rate	No.	(%)	Rate	No.	(%)	Rate	No.	(%)	Rate
GENDER																											
Male	218	(83)	121	2702	(90)	252	1337	(84)	145	8029	(93)	1239	1163	(92)	374	1862	(79)	364	1266	(86)	185	3799	(87)	479	20418	(89)	399
Female	44	(17)	25	310	(10)	29	249	(16)	26	562	(7)	91	100	(8)	30	495	(21)	93	214	(14)	31	549	(13)	67	2526	(11)	48
AGE GROUP																											
<13	<5	(-)	-	<5	(-)	-	<5	(-)	-	<5	(-)	-	<5	(-)	-	<5	(-)	-	<5	(-)	-	6	(<1)	2	20	(<1)	1
13-19	<5	(-)	-	<5	(-)	-	<5	(-)	-	15	(<1)	13	<5	(-)	-	15	(1)	11	7	(<1)	4	9	(<1)	5	57	(<1)	5
20-29	11	(4)	19	98	(3)	34	68	(4)	25	209	(2)	127	34	(3)	47	135	(6)	79	72	(5)	34	206	(5)	97	835	(4)	57
30-39	41	(16)	106	530	(18)	167	337	(21)	129	1548	(18)	640	187	(15)	155	506	(21)	340	314	(21)	155	902	(21)	378	4368	(19)	278
40-49	115	(44)	208	1317	(44)	382	666	(42)	244	3883	(45)	1936	565	(45)	515	982	(42)	760	657	(44)	355	1917	(44)	768	10117	(44)	654
50-59	65	(25)	150	778	(26)	284	362	(23)	155	2218	(26)	1611	352	(28)	402	528	(22)	585	295	(20)	206	1010	(23)	527	5626	(25)	468
60+	29	(11)	69	283	(9)	88	146	(9)	50	715	(8)	414	122	(10)	105	187	(8)	175	134	(9)	73	298	(7)	126	1921	(8)	131
RACE/ETHNICITY (3)																											
White	102	(39)	59	1387	(46)	136	365	(23)	77	3488	(41)	1323	741	(59)	183	97	(4)	399	207	(14)	84	1751	(40)	345	8160	(36)	262
Black	81	(31)	167	339	(11)	452	247	(16)	291	1459	(17)	2062	193	(15)	464	1243	(53)	367	106	(7)	289	1099	(25)	445	4776	(21)	506
Hispanic	73	(28)	60	1153	(38)	139	841	(53)	98	3340	(39)	468	276	(22)	245	1000	(42)	151	1118	(76)	115	1328	(31)	219	9141	(40)	187
Asian	<5	(-)	-	105	(3)	46	116	(7)	25	228	(3)	109	41	(3)	51	7	(<1)	40	38	(3)	31	148	(3)	60	688	(3)	50
AI/AN	<5	(-)	-	17	(1)	256	9	(1)	179	41	(<1)	1047	8	(1)	538	8	(<1)	457	7	(<1)	170	14	(<1)	262	106	(<1)	345
EXPOSURE CATEGORY (4)																											
MSM	124	(47)		1935	(64)		885	(56)		6134	(71)		901	(71)		1112	(47)		865	(58)		2887	(66)		14870	(65)	
IDU	31	(12)		173	(6)		130	(8)		331	(4)		64	(5)		194	(8)		95	(6)		325	(7)		1349	(6)	
MSM/IDU	26	(10)		179	(6)		81	(5)		615	(7)		72	(6)		123	(5)		82	(6)		336	(8)		1520	(7)	
Hemophi/Transfusion	<5	(-)		33	(1)		24	(2)		42	(<1)		15	(1)		26	(1)		19	(1)		32	(1)		193	(1)	
Heterosexual contact	33	(13)		224	(7)		171	(11)		352	(4)		69	(5)		320	(14)		149	(10)		430	(10)		1750	(8)	
Mother w/at HIV risk	<5	(-)		7	(<1)		8	(1)		22	(<1)		<5	(-)		22	(1)		10	(1)		16	(<1)		90	(<1)	
Other/Undetermined	45	(17)		461	(15)		287	(18)		1095	(13)		138	(11)		560	(24)		260	(18)		322	(7)		3172	(14)	
Total [% of total]	262	[1]	73	3012	[13]	140	1586	[7]	85	8591	[37]	681	1263	[6]	197	2357	[10]	226	1480	[6]	107	4348	[19]	270	22944	[100]	222

1. Rates that are based on observations few than 20 may not be reliable (see Technical Notes, page 29).
2. Total includes persons with no information on SPA.
3. Does not include cases who have multiple races/ethnicities or have missing information on race/ethnicity.
4. Rate for exposure category is not available, because denominator can only be estimated.

TABLE 20. RACIAL/ETHNIC- AND GENDER-SPECIFIC NUMBERS AND PERCENTAGE FOR PERSONS LIVING WITH AIDS AS OF DECEMBER 31, 2007 (1)
 BY AGE, EXPOSURE CATEGORY AND SERVICE PLANNING AREA
 REPORTED BY JUNE 30, 2008, LOS ANGELES COUNTY

	White			Black			Hispanic			Other (2)			Total (3)		
	Male	Female	All	Male	Female	All	Male	Female	All	Male	Female	All	Male	Female	All
	No. (%)	No. (%)	No. (%)	No. (%)	No. (%)	No. (%)	No. (%)	No. (%)	No. (%)	No. (%)	No. (%)	No. (%)	No. (%)	No. (%)	No. (%)
AGE GROUP (4)															
<13	<5(-)	<5(-)	<5(-)	8(<1)	<5(-)	10(<1)	<5(-)	<5(-)	7(<1)	<5(-)	<5(-)	<5(-)	13(<1)	7(<1)	20(<1)
13- 19	<5(-)	<5(-)	5(<1)	11(<1)	5(1)	16(<1)	18(<1)	16(1)	34(<1)	<5(-)	<5(-)	<5(-)	34(<1)	23(1)	57(<1)
20- 29	90(1)	14(3)	104(1)	148(4)	51(6)	199(4)	433(5)	70(6)	503(6)	24(3)	5(6)	29(4)	695(3)	140(6)	835(4)
30- 39	870(11)	86(20)	956(12)	623(16)	203(22)	826(17)	2104(26)	289(26)	2393(26)	164(23)	17(21)	181(23)	3772(18)	596(24)	4368(19)
40- 49	3510(45)	176(40)	3686(45)	1717(44)	383(42)	2100(44)	3555(44)	421(39)	3976(43)	290(41)	30(37)	320(40)	9103(45)	1014(40)	10117(44)
50- 59	2379(31)	109(25)	2488(30)	1071(28)	204(23)	1275(27)	1464(18)	179(16)	1643(18)	183(26)	17(21)	200(25)	5115(25)	511(20)	5626(25)
60+	867(11)	52(12)	919(11)	292(8)	58(6)	350(7)	473(6)	112(10)	585(6)	48(7)	13(16)	61(8)	1686(8)	235(9)	1921(8)
EXPOSURE CATEGORY															
MSM	6310(82)	- (-)	6310(77)	2408(62)	- (-)	2408(50)	5575(69)	- (-)	5575(61)	530(74)	- (-)	530(67)	14870(73)	- (-)	14870(65)
IDU	252(3)	154(35)	406(5)	276(7)	197(22)	473(10)	324(4)	113(10)	437(5)	16(2)	11(13)	27(3)	871(4)	478(19)	1349(6)
MSM/IDU	686(9)	- (-)	686(8)	359(9)	- (-)	359(8)	430(5)	- (-)	430(5)	37(5)	- (-)	37(5)	1520(7)	- (-)	1520(7)
Hemophi/Transfusion	35(<1)	12(3)	47(1)	16(<1)	25(3)	41(1)	53(1)	37(3)	90(1)	10(1)	<5(-)	14(2)	114(1)	79(3)	193(1)
Heterosexual contact	59(1)	188(43)	247(3)	142(4)	402(44)	544(11)	309(4)	591(54)	900(10)	16(2)	40(49)	56(7)	526(3)	1224(48)	1750(8)
Mother w/at HIV risk	5(<1)	<5(-)	7(<1)	20(1)	12(1)	32(1)	23(<1)	24(2)	47(1)	<5(-)	<5(-)	<5(-)	51(<1)	39(2)	90(<1)
Other/Undetermined	373(5)	84(19)	457(6)	649(17)	270(30)	919(19)	1336(17)	326(30)	1662(18)	100(14)	26(32)	126(16)	2466(12)	706(28)	3172(14)
SERVICE PLANNING AREA															
Antelope Valley[1]	89(1)	13(3)	102(1)	62(2)	19(2)	81(2)	63(1)	10(1)	73(1)	<5(-)	<5(-)	6(1)	218(1)	44(2)	262(1)
San Fernando[2]	1278(17)	109(25)	1387(17)	272(7)	67(7)	339(7)	1030(13)	123(11)	1153(13)	111(16)	11(13)	122(15)	2702(13)	310(12)	3012(13)
San Gabriel[3]	314(4)	51(12)	365(4)	185(5)	62(7)	247(5)	719(9)	122(11)	841(9)	112(16)	13(16)	125(16)	1337(7)	249(10)	1586(7)
Metro[4]	3393(44)	95(22)	3488(43)	1300(34)	159(18)	1459(31)	3052(38)	288(26)	3340(37)	250(35)	19(23)	269(34)	8029(39)	562(22)	8591(38)
West[5]	702(9)	39(9)	741(9)	162(4)	31(3)	193(4)	251(3)	25(2)	276(3)	44(6)	5(6)	49(6)	1163(6)	100(4)	1263(6)
South[6]	78(1)	19(4)	97(1)	950(25)	293(32)	1243(26)	824(10)	176(16)	1000(11)	10(1)	5(6)	15(2)	1862(9)	495(20)	2357(10)
East[7]	189(2)	18(4)	207(3)	85(2)	21(2)	106(2)	951(12)	167(15)	1118(12)	38(5)	7(9)	45(6)	1266(6)	214(8)	1480(6)
South Bay/LB[8]	1657(22)	94(21)	1751(22)	845(22)	254(28)	1099(23)	1149(14)	179(16)	1328(15)	142(20)	20(24)	162(20)	3799(19)	549(22)	4348(19)
Total (5)	7720[95]	440[5]	8160[100]	3870 [81]	906[19]	4776[100]	8050 [88]	1091[12]	9141[100]	712 [90]	82[10]	794[100]	20418[89]	2526[11]	22944[100]

1. Data are provisional due to reporting delay.
2. Other includes Asian, Pacific Islander, American Indian and Alaskan Native.
3. Total includes persons who have multiple races/ethnicities or have missing information on race/ethnicity or SPA.
4. Age as of December 31, 2007.
5. Percent of total cases that are male and female is shown in this row.

TABLE 21. ANNUAL ADULT/ADOLESCENT CASES OF AIDS AND RATES PER 100,000 (1)
 BY GENDER, YEAR OF DIAGNOSIS AND RACE/ETHNICITY
 REPORTED BY JUNE 30, 2008
 LOS ANGELES COUNTY

Year of Diagnosis	Race/Ethnicity					Total (2) No. (Rate)
	White No. (Rate)	Black No. (Rate)	Hispanic No. (Rate)	Asian No. (Rate)	AI/AN No. (Rate)	
MALE						
1998	577 (43)	386 (116)	683 (46)	53 (12)	9 (87)	1713 (47)
1999	506 (38)	356 (107)	671 (44)	55 (12)	6 (58)	1601 (44)
2000	501 (38)	334 (99)	655 (42)	30 (6)	8 (73)	1529 (41)
2001	459 (34)	326 (96)	627 (39)	42 (8)	9 (80)	1470 (39)
2002	540 (40)	321 (94)	673 (41)	55 (11)	9 (78)	1602 (41)
2003	539 (40)	251 (73)	623 (37)	52 (10)	7 (58)	1476 (38)
2004	386 (29)	235 (68)	578 (33)	49 (9)	5 (40)	1259 (32)
2005 (3)	349 (26)	258 (75)	503 (28)	46 (8)	<5 (-)	1162 (29)
2006 (3)	363 (27)	237 (69)	476 (26)	47 (9)	<5 (-)	1130 (28)
2007 (3)	257 (19)	177 (50)	368 (20)	34 (6)	<5 (-)	843 (21)
Cumulative						
Male subtotal (4)	23442	9258	15116	1156	191	49266
FEMALE						
1998	41 (3)	78 (19)	96 (7)	<5 (-)	<5 (-)	222 (6)
1999	35 (3)	96 (24)	79 (5)	<5 (-)	<5 (-)	216 (6)
2000	44 (3)	83 (21)	99 (6)	<5 (-)	<5 (-)	231 (6)
2001	34 (2)	79 (19)	106 (7)	9 (2)	<5 (-)	230 (6)
2002	38 (3)	78 (19)	103 (6)	8 (1)	<5 (-)	229 (6)
2003	29 (2)	73 (18)	93 (6)	5 (1)	<5 (-)	201 (5)
2004	34 (2)	73 (18)	66 (4)	5 (1)	<5 (-)	181 (4)
2005 (3)	24 (2)	75 (18)	68 (4)	6 (1)	<5 (-)	174 (4)
2006 (3)	22 (2)	68 (16)	78 (4)	<5 (-)	<5 (-)	176 (4)
2007 (3)	19 (1)	52 (12)	48 (3)	<5 (-)	<5 (-)	124 (3)
Cumulative						
Female subtotal (4)	960	1696	1683	106	30	4486
BOTH						
1998	618 (22)	464 (63)	779 (26)	57 (6)	12 (56)	1935 (26)
1999	541 (20)	452 (62)	750 (25)	61 (6)	6 (28)	1817 (24)
2000	545 (20)	417 (56)	754 (24)	34 (3)	9 (40)	1760 (23)
2001	493 (18)	405 (54)	733 (23)	51 (5)	11 (48)	1700 (22)
2002	578 (21)	399 (53)	776 (24)	63 (6)	10 (42)	1831 (23)
2003	568 (21)	324 (43)	716 (21)	57 (5)	8 (32)	1677 (21)
2004	420 (15)	308 (40)	644 (19)	54 (5)	7 (27)	1440 (18)
2005 (3)	373 (14)	333 (44)	571 (16)	52 (5)	<5 (-)	1336 (16)
2006 (3)	385 (14)	305 (40)	554 (15)	51 (4)	5 (19)	1306 (16)
2007 (3)	276 (10)	229 (30)	416 (11)	38 (3)	<5 (-)	967 (12)
Cumulative Total (4)						
	24402	10954	16799	1262	221	53752

1. Rates are based on population estimates for 1998-2007. Rates based on observations fewer than 20 may not be reliable(see Technical Notes, page 29).
2. Total includes persons who have multiple races/ethnicities or have missing information on race/ethnicity.
3. Data are provisional due to reporting delay.
4. Includes persons diagnosed since 1982.

TABLE 22. ANNUAL DEATHS AMONG AIDS CASES BY AGE, RACE/ETHNICITY, GENDER, EXPOSURE CATEGORY AND SERVICE PLANNING AREA
 REPORTED BY JUNE 30, 2008
 LOS ANGELES COUNTY

	Year of Death										Cumulative 1982-2008	
	2002		2003		2004		2005 (1)		2006(1)			
	No.	%	No.	%	No.	%	No.	%	No.	%	No.	%
AGE AT DEATH												
<13	<5	(-)	<5	(-)	<5	(-)	<5	(-)	<5	(-)	155	(1)
13- 19	<5	(-)	<5	(-)	<5	(-)	<5	(-)	<5	(-)	48	(<1)
20- 29	25	(4)	23	(4)	20	(3)	13	(2)	14	(4)	2964	(10)
30- 39	180	(28)	145	(23)	155	(24)	97	(17)	75	(20)	12177	(39)
40- 49	240	(38)	255	(40)	251	(38)	270	(47)	132	(36)	9675	(31)
50- 59	139	(22)	143	(22)	147	(22)	125	(22)	100	(27)	4178	(14)
60+	48	(8)	67	(11)	81	(12)	63	(11)	44	(12)	1711	(6)
RACE/ETHNICITY												
White	203	(32)	221	(35)	227	(35)	208	(37)	140	(38)	16234	(53)
Black	175	(28)	179	(28)	175	(27)	143	(25)	85	(23)	6236	(20)
Hispanic	235	(37)	214	(34)	230	(35)	206	(36)	130	(35)	7711	(25)
Other (2)	18	(3)	18	(3)	20	(3)	11	(2)	10	(3)	687	(2)
MALE EXPOSURE CATEGORY												
MSM	330	(52)	341	(54)	351	(54)	288	(51)	205	(56)	22201	(72)
IDU	57	(9)	46	(7)	54	(8)	42	(7)	19	(5)	1690	(5)
MSM-IDU	37	(6)	61	(10)	54	(8)	55	(10)	27	(7)	2199	(7)
Heterosexual contact	19	(3)	10	(2)	16	(2)	18	(3)	8	(2)	364	(1)
Other/undetermined (3)	101	(16)	92	(14)	95	(15)	91	(16)	56	(15)	2399	(8)
FEMALE EXPOSURE CATEGORY												
IDU	22	(3)	32	(5)	27	(4)	22	(4)	17	(5)	573	(2)
Heterosexual contact	30	(5)	24	(4)	37	(6)	22	(4)	11	(3)	788	(3)
Other/undetermined (3)	37	(6)	30	(5)	21	(3)	31	(5)	24	(7)	694	(2)
SERVICE PLANNING AREA												
Antelope Valley[1]	6	(1)	10	(2)	8	(1)	6	(1)	8	(2)	275	(1)
San Fernando[2]	84	(13)	71	(11)	80	(12)	81	(14)	48	(13)	4626	(15)
San Gabriel [3]	50	(8)	46	(7)	58	(9)	42	(7)	31	(8)	2377	(8)
Metro[4]	221	(35)	228	(36)	223	(34)	199	(35)	122	(33)	12364	(40)
West[5]	29	(5)	28	(4)	29	(4)	30	(5)	19	(5)	1890	(6)
South[6]	90	(14)	109	(17)	100	(15)	64	(11)	42	(11)	3096	(10)
East[7]	44	(7)	48	(8)	46	(7)	32	(6)	23	(6)	1699	(5)
South Bay/LB[8]	109	(17)	96	(15)	111	(17)	115	(20)	74	(20)	4465	(14)
Total (4)	633	(100)	636	(100)	655	(100)	569	(100)	367	(100)	30908	(100)

1. Data are provisional due to reporting delay.
2. Includes Asian, Pacific Islander, American Indian and Alaskan Native.
3. Includes hemophilia or coagulation disorder, transfusion recipient, mother with or at risk for HIV, confirmed other risk and risk not specified.
4. Includes persons of multiple races/ethnicities or unknown race/ethnicity or service planning area.

TABLE 23. CHARACTERISTICS OF PERSONS REPORTED WITH NON-AIDS HIV BY NON-NAME CODE - FINAL (1),
 JULY 1, 2002 - APRIL 17, 2006
 LOS ANGELES COUNTY

	Number	Percent (%)
GENDER		
Male	12866	84
Female	2252	15
Transgender	156	1
AGE AT TIME OF DIAGNOSIS		
<13	216	1
13- 19	459	3
20- 29	4290	28
30- 39	5999	39
40- 49	3185	21
50- 59	908	6
60+	218	1
RACE/ETHNICITY		
White	5451	36
Black	3542	23
Hispanic	5374	35
Asian/PI	379	2
AI/AN	55	<1
Other/Unknown	474	3
EXPOSURE CATEGORY		
MSM	9070	59
IDU	645	4
MSM/IDU	610	4
Hemophilia/Transfusion	73	<1
Heterosexual contact	934	6
Mother with/at risk for HIV	188	1
Undetermined	3755	25
SERVICE PLANNING AREA		
Antelope Valley[1]	162	1
San Fernando[2]	1979	13
San Gabriel [3]	894	6
Metro[4]	6532	43
West[5]	838	5
South[6]	1756	12
East[7]	847	6
South Bay/Long Beach[8]	2240	15
Total (2)	15275	100

1. Data are based on code-based HIV reporting system and are provisional due to reporting delay.
2. Includes persons of multiple race/ethnicities or unknown race/ethnicity, gender or service planning area.

FIGURE 3. MALE ADULT/ADOLESCENT AIDS RATES BY RACE/ETHNICITY¹ AND YEAR OF DIAGNOSIS, LOS ANGELES COUNTY, 1992-2006

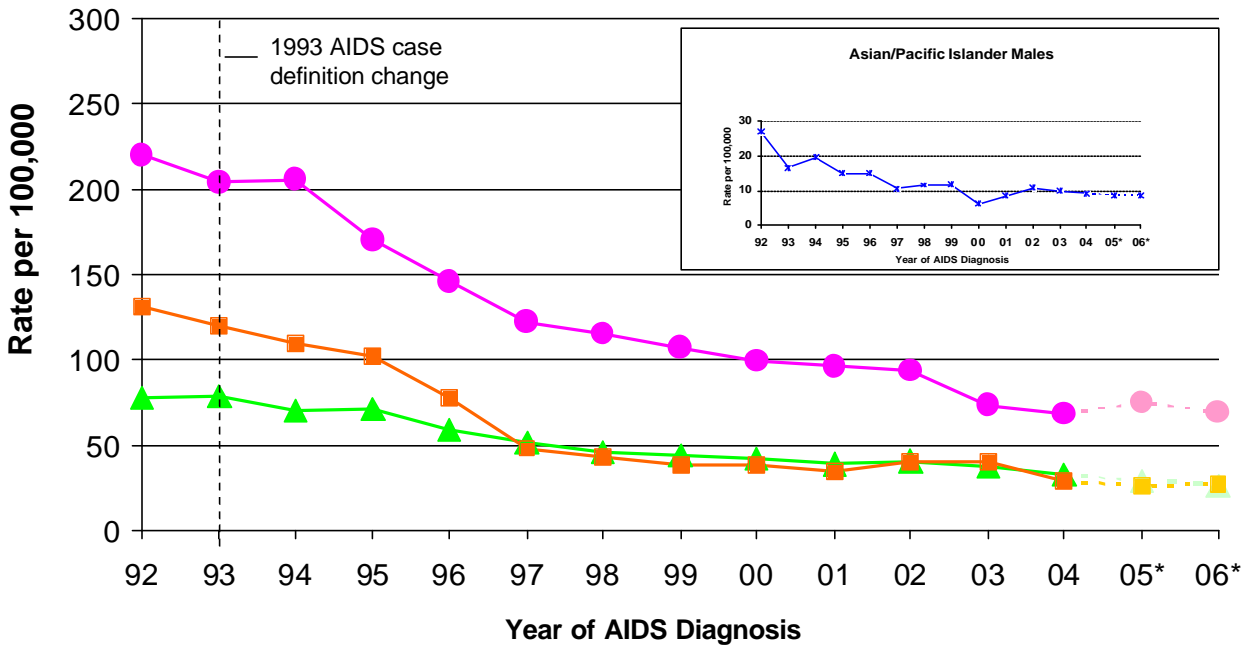
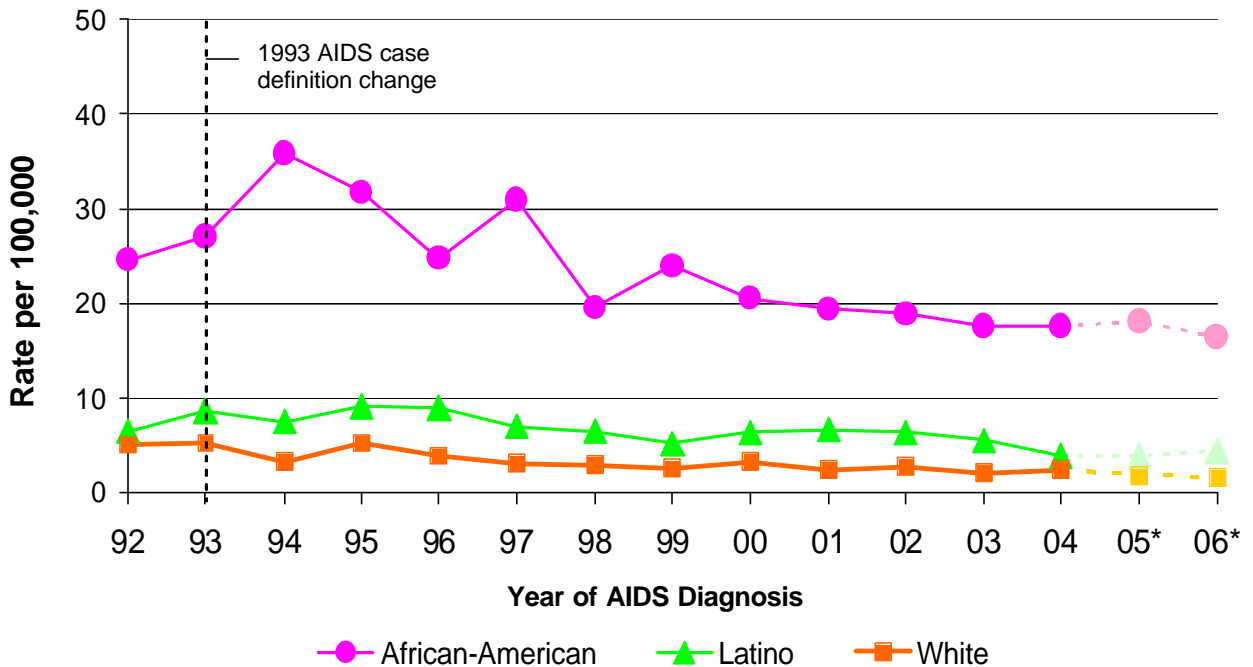


FIGURE 4. FEMALE ADULT/ADOLESCENT AIDS RATES BY RACE/ETHNICITY¹ AND YEAR OF DIAGNOSIS, LOS ANGELES COUNTY, 1992-2006



1. AIDS rates for Asian/Pacific Islander females, Native Americans and Alaskan Natives are not presented here because rates based on small numbers may result in unstable estimates.
 * Data are provisional due to reporting delay.

FIGURE 5. PERCENT OF ADULT/ADOLESCENT AIDS CASES BY RACE/ETHNICITY* AND YEAR OF DIAGNOSIS, LOS ANGELES COUNTY, 1992-2007

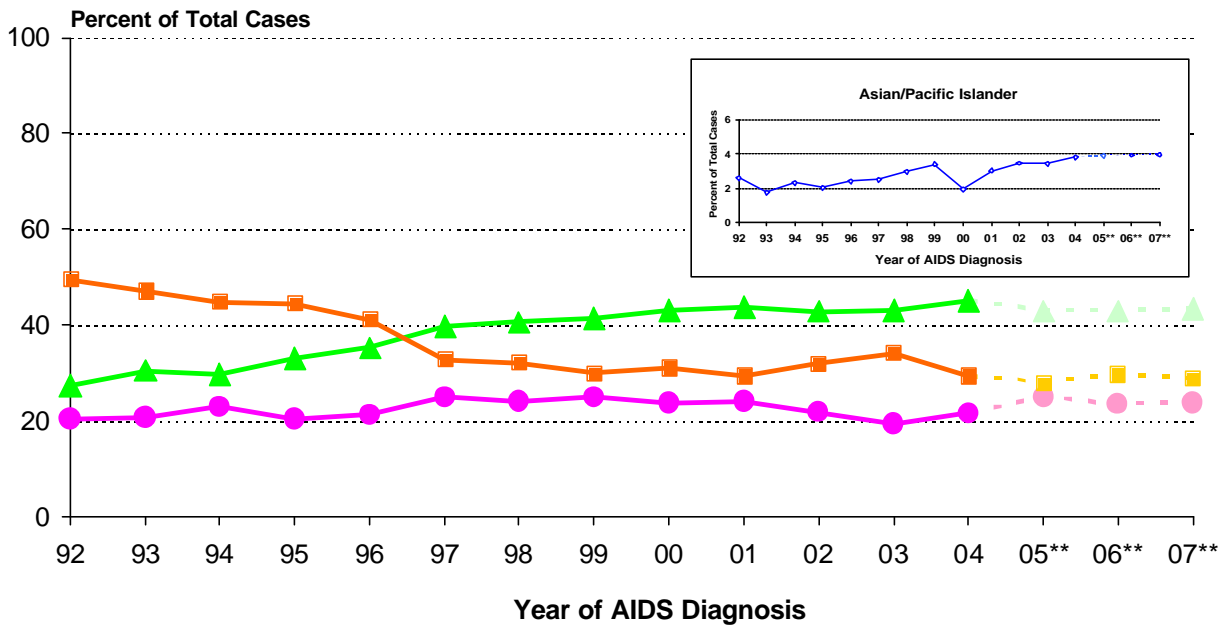
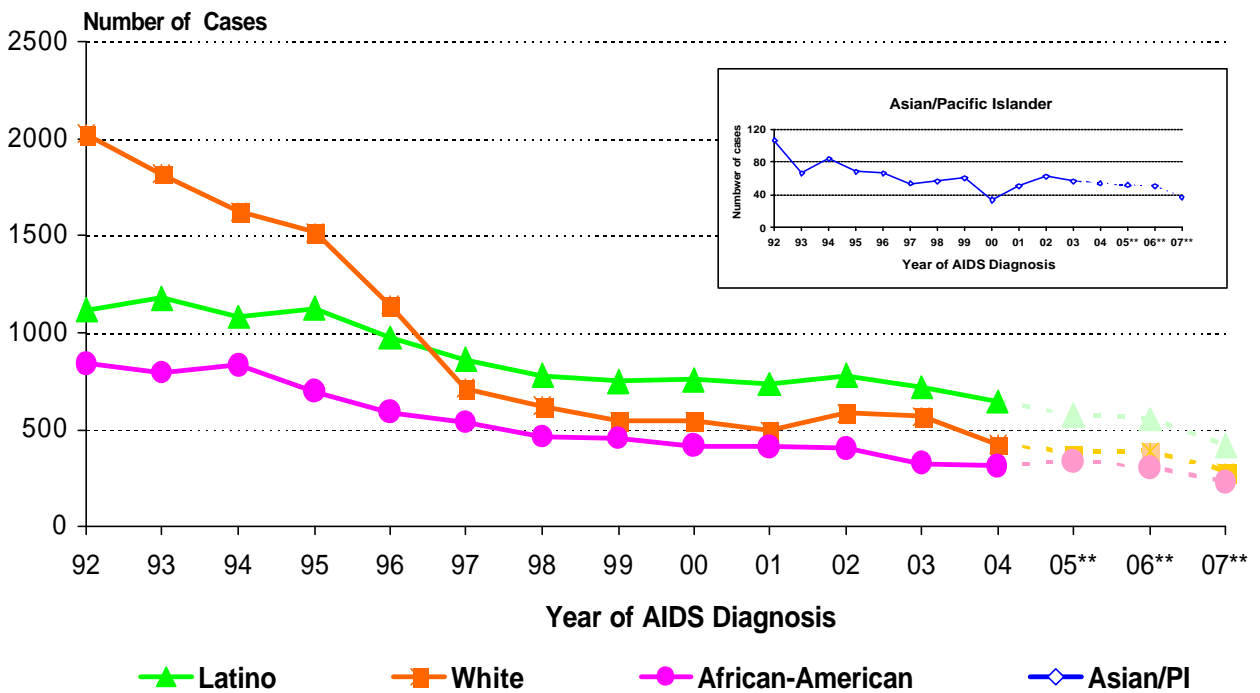


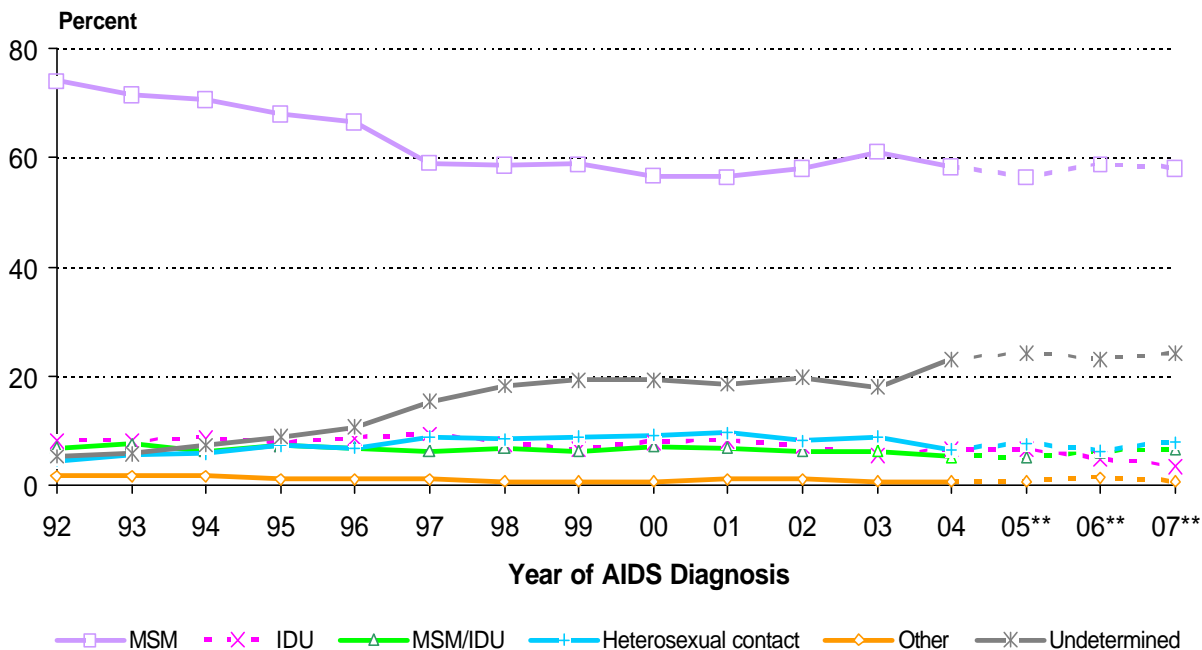
FIGURE 6. NUMBER OF ADULT/ADOLESCENT AIDS CASES BY RACE/ETHNICITY* AND YEAR OF DIAGNOSIS, LOS ANGELES COUNTY, 1992-2007



* American Indian and Alaskan Native are not presented here because small numbers may result in unstable estimates.

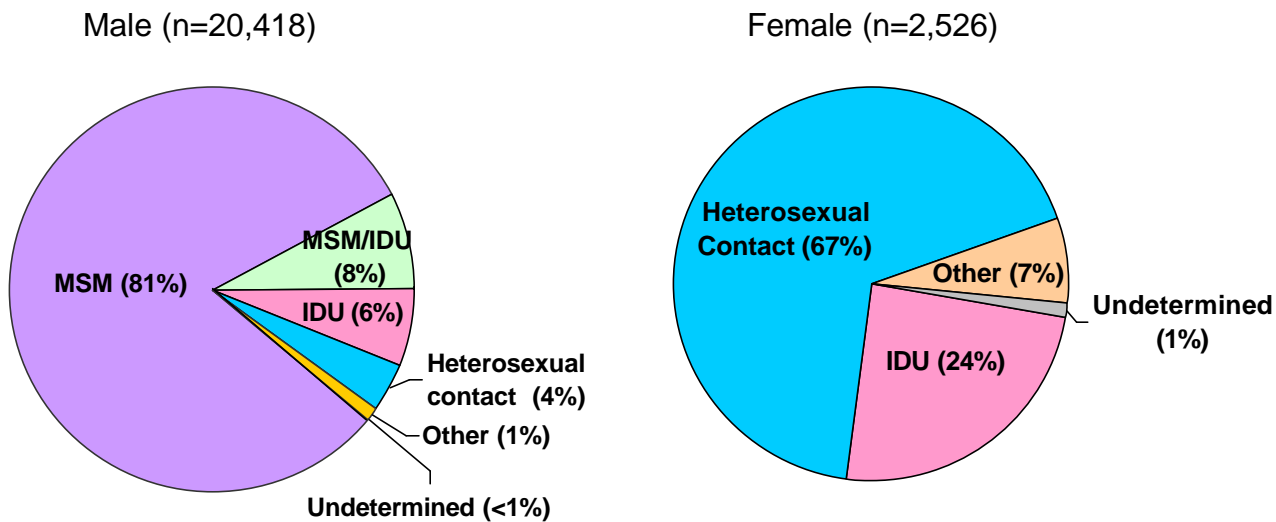
** Data are provisional due to reporting delay.

FIGURE 7. PERCENT OF ADULT/ADOLESCENT AIDS CASES BY MODE OF EXPOSURE* AND YEAR OF DIAGNOSIS, LOS ANGELES COUNTY, 1992-2007



* Other risks include hemophilia or coagulation disorder, transfusion recipient, mother with/at risk for HIV, and confirmed other risk.
 ** Data are provisional due to reporting delay.

FIGURE 8. ADJUSTED MODE OF EXPOSURE¹ FOR PERSONS LIVING WITH AIDS AS OF DECEMBER 31, 2007 BY GENDER IN LOS ANGELES COUNTY



1. Persons who had no reported risk for HIV infection had been redistributed to a valid mode of exposure category based on the distribution of reclassified cases reported from 1993-2002 (see technical notes, page 29).

Appendix 1: 1993 Revised Classification System for HIV Infection¹ and Expanded Surveillance Case Definition for Adolescents and Adults²

	Clinical categories		
CD4+ T-cell Categories	(A) Asymptomatic, acute (primary) HIV or PGL ³	(B) Symptomatic, not (A) or (C) conditions	(C) AIDS-indicator conditions
(1) ≥500/μL	A1	B1	C1
(2) 200-499/μL	A2	B2	C2
(3) <200/μL AIDS-indicator T-cell count	A3	B3	C3

¹ Criteria for HIV infection for persons ages ≥13 years: a) repeatedly reactive screening test for HIV antibody (e.g., enzyme immunoassay) with specific antibody identified by the use of supplemental tests (e.g., Western blot, immunofluorescence assay); b) direct identification of virus in host tissues by virus isolation; c) HIV antigen detection; or d) a positive result on any other highly specific licensed test for HIV.

² The shaded cells illustrate the expanded AIDS surveillance case definition. Persons with an AIDS-indicator condition (Category C) as well as those with CD4+ T-lymphocyte counts <200/μL (Categories A3 or B3) are reportable as AIDS cases in the United States and Territories, effective January 1, 1993.

³ PGL=persistent generalized lymphadenopathy.

Clinical Conditions Included in the 1993 AIDS Surveillance Case Definition

- Candidiasis of bronchi, trachea, or lungs
- Candidiasis, esophageal
- Cervical cancer, invasive*
- Coccidioidomycosis, disseminated or extrapulmonary
- Cryptococcosis, extrapulmonary
- Cryptosporidiosis, chronic intestinal (>1 month duration)
- Cytomegalovirus disease (other than liver, spleen, or nodes)
- Cytomegalovirus retinitis (with loss of vision)
- Encephalopathy, HIV-related
- Herpes simplex: chronic ulcer(s) (>1 month duration) or bronchitis, pneumonitis, or esophagitis
- Histoplasmosis, disseminated or extrapulmonary
- Isosporiasis, chronic intestinal (>1 month duration)
- Kaposi's sarcoma
- Lymphoma, Burkitt's (or equivalent term)
- Lymphoma, immunoblastic (or equivalent term)
- Lymphoma, primary in brain
- *Mycobacterium avium* complex or *M. kansasii*, disseminated or extrapulmonary
- *Mycobacterium tuberculosis*, any site (pulmonary* or extrapulmonary)
- *Pneumocystis carinii* pneumonia
- Pneumonia, recurrent*
- Progressive multifocal leukoencephalopathy
- *Salmonella* septicemia, recurrent
- Toxoplasmosis of brain
- Wasting syndrome due to HIV

* Added in the 1993 expansion of the AIDS surveillance case definition.

Appendix 2: Technical Notes

Reporting Delay

Reporting delay is defined as the time interval between the date an AIDS diagnosis was made and the date the case was reported. The median reporting delay for all cases reported in 2007 was 7 months (range 0 to 300 months). The impact of report delay must be considered when evaluating trends in case numbers and rates over time (Figure 1-7, Tables 1, 4-8, 10, 13-14, 18, and 21-23).

Rates

For Figure 3-4, Table 4, Table 13- 15, Table 17-19, and Table 21. AIDS case rates are calculated using Population Estimation and Projection System(PEPS) for 1992-2007 that were prepared by Walter R. McDonald & Associates, Inc. (WRMA) for Urban Research, LA County CAO. Conforming to standard criterion used by the National Center for Health Statistics, rates are considered unreliable when the relative standard error of the rate is greater than or equal to 23%--that is, when rates are based on less than 20 observations.

Race and ethnicity

Mandated collection of race and ethnicity data was implemented in January 1, 2003 as required by the OMB Statistical Policy Directive 15. A minimum of 5 race categories should be collected including American Indian or Alaska Native, Asian, black or African American, Native Hawaiian or Other Pacific Islander, and white. Additionally, systems must be able to retain information when multiple racial categories are reported. Two ethnicity categories should be collected regardless of race: Hispanic and non-Hispanic.

Race and Ethnicity in this report are grouped using the following criteria exclusively: A record is considered to be 'Hispanic' if so indicated in race or ethnicity field, regardless of any other race information found on the record. When not indicated as 'Hispanic', a record is considered to be 'American Indian/Alaskan Native' if the race field contains AI/AN information, regardless of any other race information found on the record. A record is considered to be 'Asian/Pacific Islander' when either indicated as Asian or Native Hawaiian/Pacific Islander, or both in the race fields. Aside from the above criteria, a record is categorized as 'Multi-race' when more than one race are indicated in the above race fields. All other records with a single race indicated are placed in the corresponding race category. Persons with multiple racial categories or unknown race are included in the total numbers in Table 2-4, Table 11 and Table 15-21.

Exposure Categories

Exposure categories are assigned in a hierarchical fashion (listed from highest to lowest in the column headed "Exposure Category"). Cases for which more than one exposure category have been identified are assigned to the category listed highest in the hierarchy. For example, a man who reports sexual contact with another man and heterosexual contact with an HIV-positive woman would be classified as "male-male sexual contact." The only exception to this rule includes those men who report both sexual contact with another man and injection-drug use. A separate exposure category has been created for these cases.

The "Undetermined" exposure category includes persons with no history of exposure to HIV through one of the defined exposure categories. Cases reported as undetermined include some persons still under investigation. If the investigation identifies a mode of exposure, the case is reclassified into the corresponding exposure category. Because recently reported AIDS cases are more likely to be reported without sufficient risk factor information, recent AIDS incidence in some transmission categories will be underestimated unless an adjustment is made. For figures that show the distribution of AIDS cases by adjusted mode of exposure, persons who had no reported risk for HIV exposure were redistributed to other valid exposure categories based on the sex-, and race-specific distribution of the cases reported from 1993 to 2002 and reclassified to a valid exposure category.

AIDS-Indicator Conditions

At the time of initial case report, all available information about AIDS-defining conditions is collected. However, after a case has been reported, systematic follow-up is not done to identify subsequent AIDS-defining conditions. Therefore, the information presented in Table 12 reflects initial AIDS-defining condition(s) and should be considered a minimum estimate of all AIDS-defining conditions.

All persons meeting the CDC AIDS case or HIV definition are reportable by name as required by the *California Code of Regulations, Title 17, Section 2500/2600/2641.5-2643.20*. If you have questions on how to report a case, would like a case report form and/or information on the case definition, would like assistance establishing an HIV/AIDS surveillance system, or receive the semi-annual surveillance summary and other periodic reports, contact the HIV Epidemiology Program at the address below:

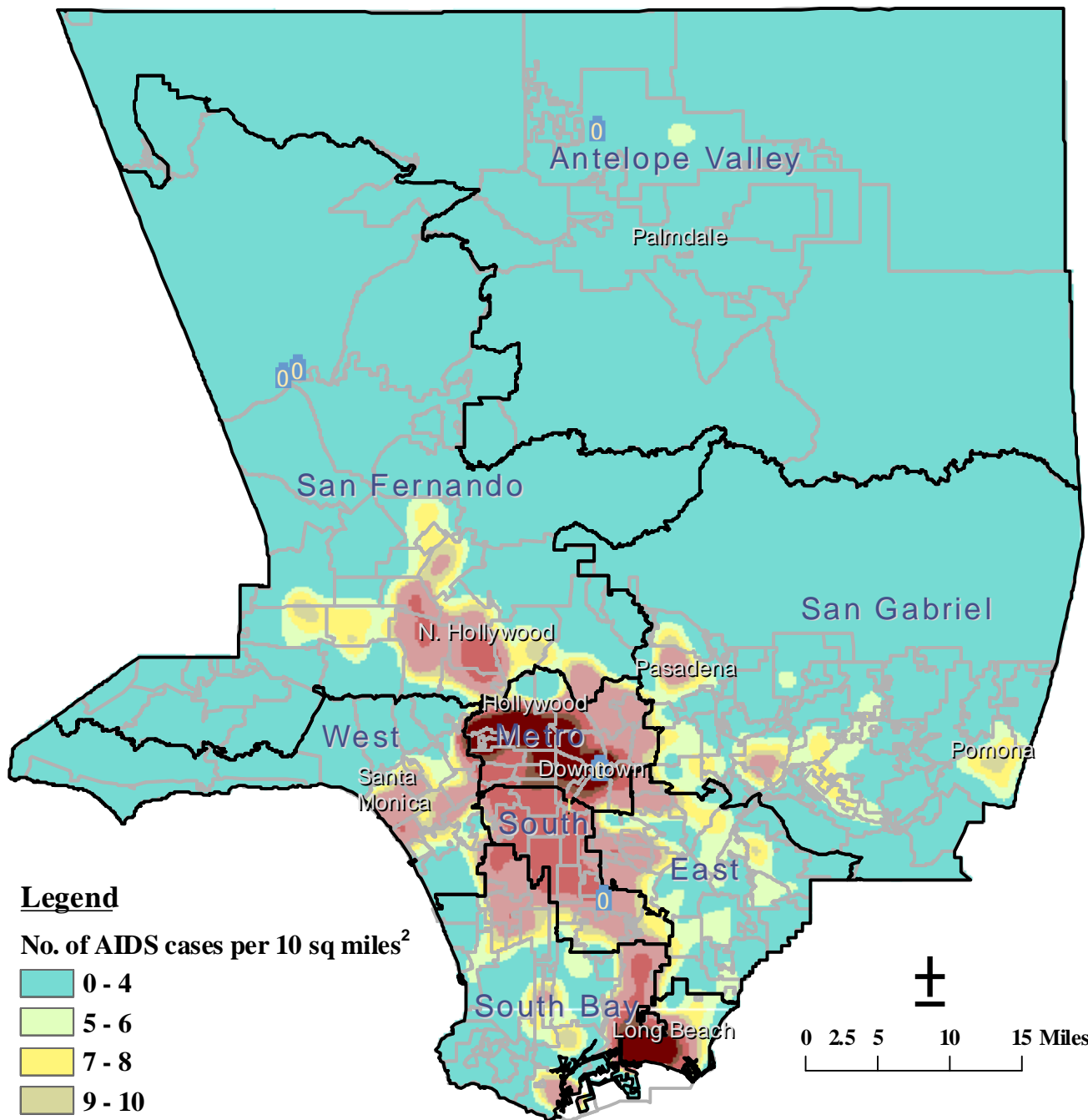
HIV Epidemiology Program
Los Angeles County Department of Public Health
600 South Commonwealth Avenue, Suite 1260
Los Angeles, California 90005
Phone: (213) 351-8516
FAX: (213) 487-4683
Email: hivepiemail@ph.lacounty.gov

DOCUMENTING HIV RISK (MODE OF HIV EXPOSURE)

Timely information on transmission risk for persons diagnosed with HIV and AIDS is important for HIV prevention planning and resource allocation.

- ✓ In over 20% of persons reported with HIV and AIDS, providers did not document and/or report a mode of exposure to HIV.
- ✓ The diagnosing provider should always ask patients and clients about their HIV exposure risks and document them in both the medical record and the case report form.
- ✓ Exposure categories for HIV transmission include:
 1. Men who have sex with men
 2. Recreational injection drug users
 3. Recipients of blood transfusions, organ/other tissue transplants
 4. Sexual partners of HIV-infected persons
 5. Sexual partners of injection drug users
 6. Female sexual partners of men who have sex with men
 7. Sexual partners of persons with clotting disorders, hemophiliacs
 8. Infants born of and/or breast-fed by HIV-infected women

Fig 9. Distribution of Persons Reported with AIDS in LA County in 2000-2007 (N=12,697¹)



Legend

No. of AIDS cases per 10 sq miles²

- 0 - 4
- 5 - 6
- 7 - 8
- 9 - 10
- 11 - 20
- 21 - 40
- 41 - 60
- >60

- Jails or Detentional Facilities
- Geographical Center of AIDS cases

- Service Planning Area (SPA) boundary
- City or Statistical Area Boundary

1. The map does not include 825 (6%) persons who are missing a specific address at the time of AIDS diagnosis.
2. The number is smoothed by averaging the number of AIDS cases within an 1.78-mile radius.

