



# 2011 ANNUAL HIV SURVEILLANCE REPORT



©2009 photography  
by Judy Tejero

Issue Date:

**February 2012**

Cases Reported as of December 31, 2011

**DIVISION OF HIV AND STD PROGRAMS/  
HIV EPIDEMIOLOGY**

600 S. Commonwealth Avenue, Suite 1920

Los Angeles, CA 90005

Phone: (213) 351-8196

Fax: (213) 487-9386

<http://publichealth.lacounty.gov/hiv/>



**JONATHAN E. FIELDING, M.D., M.P.H.**  
Director and Health Officer

**JONATHAN E. FREEDMAN**  
Chief Deputy Director

Division of HIV and STD Programs  
**Mario J. Pérez, Director**  
600 South Commonwealth Avenue, 10<sup>th</sup> Floor  
Los Angeles, California 90005  
TEL (213) 351-8000 • FAX (213) 387-0912

[www.publichealth.lacounty.gov](http://www.publichealth.lacounty.gov)

**BOARD OF SUPERVISORS**

- Gloria Molina**  
First District
- Mark Ridley-Thomas**  
Second District
- Zev Yaroslavsky**  
Third District
- Don Knabe**  
Fourth District
- Michael D. Antonovich**  
Fifth District

February 17, 2012

Dear Colleague:

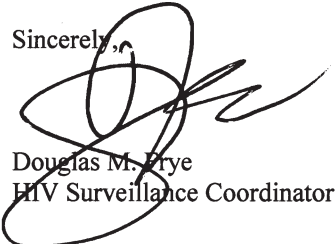
Enclosed you will find the 2011 issue of the *Annual HIV Surveillance Report* for LA County, containing analyzed data for HIV cases reported through December 31, 2011. Since 1981, 77,886 cases of HIV and AIDS have been reported in LA County, of which 33,950 (43.6%) have died and 43,936 are living. This number does not include persons that we estimate to be living with HIV not reported here because either they were reported by code, their cases are pending investigation, or they are unaware of their infection. In all, we estimate 59,500 persons to be living with HIV in LA County.

In California, named HIV reporting began in April 2006. During the first few years of HIV reporting, many HIV cases (persons who had been diagnosed with HIV prior to 2006) were likely misclassified as a new HIV diagnosis in recent years (especially 2007-2008), since a complete patient history on HIV might not have been available to the persons who completed the case report forms. Therefore, the “bump” in the number of reported cases seen for years 2007 and 2008 could likely be caused by the change in reporting regulations and should not be interpreted as the real increase in newly diagnosed HIV disease. So while the data as presented in this report could be used to inform trends over time, we ask that you resist the temptation to do so as much of the data is still preliminary.

Since the last issue, we have added one new table and two new figures in the *Annual HIV Surveillance Report*. On Page 9, Table 6 annual HIV diagnoses and rates for 2006 through 2011 are shown, by demographics and risk factors. Also, on Page 30 we added two figures reflecting rates of HIV diagnoses by year for both adult adolescent men and women from 2006 through 2011. For reasons mentioned above, caution should be employed when interpreting these figures.

You may now choose to receive the *Annual HIV Surveillance Report* either by mail (hard copy) or by e-mail (electronic version). Please visit our program web site at <http://publichealth.lacounty.gov/hiv/>, click the link "Subscribe to the Mailing List" and complete the subscription form. Your personal information will be kept confidential and secure in our system. We will deliver the next *Annual HIV Surveillance Report* to you based on your choice. Alternatively, you can fill out a subscription form (see insert) and return it to us by fax.

Provider HIV case report and laboratory test report forms are available for you to download at: <http://publichealth.lacounty.gov/hiv/hivreporting.htm>. Because of severe penalties outlined in HIV reporting law for breaches in patient confidentiality, we strongly suggest you *not* email or fax reports of HIV persons to us. Instead, please seal in a double-envelope and mail to: 600 S. Commonwealth Ave., Suite 1260, Los Angeles, CA 90005, or report by phone at: (213) 351-8516. Data presented here, and other HIV information, are available at our Web site. Data requests can be made by phone or through our Web site.

Sincerely,  
  
Douglas M. Frye  
HIV Surveillance Coordinator

## **2011 Annual Surveillance Summary Highlights**

- In 2008, the most recent year for which data are not preliminary, there were over 2,400 unique cases of HIV reported in Los Angeles County.
- In 2008, the proportion of HIV diagnoses whose transmission risk was heterosexual varied by race/ethnicity, comprising 17% of Black cases, 13% of Asian/Pacific Islander cases, 11% of Latino cases and 5% of White cases.
- In 2008, the majority (58%) of new diagnoses was among persons aged 20-39 years, but 38% of diagnoses were among those older than 40 years.
- Among persons living with HIV in Los Angeles County, less than 1% are persons less than 20 years of age and nearly three-quarters are 40 years old or older.
- Since 2008, there have been 8 children, less than 13 years of age, newly diagnosed with HIV. All eight were exposed perinatally – that is, during pregnancy, at delivery or through breast feeding.
- The number of cases of severe HIV disease (AIDS) reported annually remains relatively low, with 1,380 diagnosed in 2009, compared with over 4,000 diagnosed in 1992.
- Among White males living with HIV in LA County, 97% of cases were among men who have sex with men (MSM) and 1% reported a heterosexual transmission risk. For Black and Latino males, 3% reported a heterosexual transmission risk, while 91% and 93%, respectively, reported their risk as MSM.
- More Latinos living with HIV are less than 40 years of age (35%) than either Blacks (29%) or Whites (15%) living with the disease.

**NOTICE TO HEALTH CARE PROVIDERS AND OTHERS RESPONSIBLE FOR DISEASE REPORTING:**

California Code of Regulations, Title 17, Section 2500 requires that all diagnosed or suspected cases of AIDS as defined by CDC must be reported within seven (7) days to the Health Officer. California Code of Regulations, Title 17, Section 2600/2641.5-2643.20 require both health care providers and laboratories to report HIV cases by name to the Health Officer within seven (7) days. In addition, Senate Bill (SB) 1184 requires each clinical laboratory to report all CD4+ T-cell tests to the local Health Officer within seven (7) days of the completion of a CD4+ T-cell test. To obtain more information on the HIV/AIDS reporting requirement, obtain case report forms, or report a case, please visit our web site: <http://publichealth.lacounty.gov/hiv/hivreporting.htm>, or contact the HIV Epidemiology, Division of HIV and STD Programs (DHSP), 600 South Commonwealth Avenue, Suite 1260, Los Angeles, CA 90005. Phone (213) 351-8516; Fax (213) 487-4683.

The *HIV Surveillance Report* is published annually by the HIV Epidemiology, Division of HIV and STD Programs, Los Angeles County Department of Public Health. Copies of this report are available free of charge. Individuals or organizations may complete the subscription form by visiting our web site at <http://publichealth.lacounty.gov/hiv/> to be added to the mailing list. An electronic copy of this report is also available at our web site at <http://publichealth.lacounty.gov/hiv/>.

Suggested Citation: HIV Epidemiology, Division of HIV and STD Programs, Los Angeles County Department of Public Health. 2011 Annual HIV Surveillance Report, February 2012: 1-36.

Los Angeles County Department of Public Health..... Jonathan E. Fielding, M.D, M.P.H.  
Director and Health Officer

Division of HIV and STD Programs .....Mario J. Pérez, M.P.H.  
Director

HIV Epidemiology .....Douglas Frye, M.D., M.P.H.  
Director

Data Analysis Unit .....Virginia Hu, M.P.H.  
Chief, Supervising Epidemiologist  
Zhijuan Sheng, M.S.  
Epidemiologist

Data Acquisition Unit.....Latonya Taylor, R.N., M.S.N./M.P.H.,C.N.S.  
Chief, Assistant Program Specialist

# CONTENTS

---

Commentary .....	1
<b>HIV/AIDS diagnoses, deaths, and persons living with HIV/AIDS, Los Angeles County, California, and the United States .....</b>	<b>3</b>
<b>Section 1 Diagnoses of HIV Infection</b>	
Figure 2 Annual diagnoses of AIDS and HIV infection and deaths of persons with HIV infection, Los Angeles County, 1991-2011 .....	4
Figure 3 Persons living with HIV infection and AIDS by year, Los Angeles County, 1991-2011 .....	5
Table 1 Diagnoses, deaths, and persons living with a diagnosis of HIV infection and AIDS by year, reported by December 31, 2011, Los Angeles County .....	5
Table 2 Cumulative HIV/AIDS diagnoses by gender, age, and race/ethnicity, reported by December 31, 2011, Los Angeles County .....	6
Table 3 Cumulative HIV/AIDS diagnoses among adults/adolescents by gender, transmission category, and race/ethnicity, reported by December 31, 2011, Los Angeles County .....	7
Table 4 Cumulative HIV/AIDS diagnoses among children <13 years of age by transmission category, and race/ethnicity, reported by December 31, 2011, Los Angeles County .....	8
Table 5 HIV/AIDS diagnoses among children <13 years of age by race/ethnicity, transmission category, and year of HIV diagnosis, reported by December 31, 2011, Los Angeles County .....	8
Table 6 HIV/AIDS diagnoses and rates per 100,000 by gender, age, race/ethnicity, transmission category, service planning area and year of HIV diagnosis, reported by December 31, 2011, Los Angeles County .....	9
Table 7 HIV/AIDS diagnoses and rates per 100,000 by service planning area/health district of residence, and year of HIV diagnosis, reported by December 31, 2011, Los Angeles County .....	10
Table 8 HIV/AIDS diagnoses and rates per 100,000 by year of HIV diagnosis and city/area of residence, top 35 cities/areas ranked by 2010 rate, reported by December 31, 2011, Los Angeles County .....	11
Table 9 HIV/AIDS diagnoses in 2010, persons living with HIV/AIDS, and cumulative by gender, age, race/ethnicity and transmission category, reported by December 31, 2011, Los Angeles County ..	12
Table10 New HIV/AIDS diagnoses in 2008 and rates per 100,000 by gender, age, race/ethnicity, transmission category, and service planning area (SPA), reported by December 31, 2011, Los Angeles County .....	13
Table11 New HIV/AIDS diagnoses in 2009 and rates per 100,000 by gender, age, race/ethnicity, transmission category, and service planning area (SPA), reported by December 31, 2011, Los Angeles County .....	14
Table12 New HIV/AIDS diagnoses in 2010 and rates per 100,000 by gender, age, race/ethnicity, transmission category, and service planning area (SPA), reported by December 31, 2011, Los Angeles County .....	15
Table 13 Persons living with HIV/AIDS as of December 31, 2011 by race/ethnicity, gender, age, transmission category, and service planning area (SPA), reported by December 31, 2011, Los Angeles County .....	16
Table 14 Persons living with HIV/AIDS and rates per 100,000 as of December 31, 2011 by service planning	

	area (SPA), gender, age, race/ethnicity and transmission category, reported by December 31, 2011, Los Angeles County .....	17
Table 15	Cumulative HIV/AIDS diagnoses by gender, age, race/ethnicity, transmission category, and service planning area (SPA), reported by December 31, 2011, Los Angeles County .....	18
Figure 8	Rates of HIV/AIDS diagnoses among adult/adolescent men by race/ethnicity, Los Angeles County, 2006-2011 .....	30
Figure 9	Rates of HIV/AIDS diagnoses among adult/adolescent women by race/ethnicity, Los Angeles County, 2006-2011 .....	30
Figure 10	Diagnoses of HIV (incl AIDS) among adults/adolescents by transmission category and year of HIV diagnosis, Los Angeles County, 1992-2011 .....	31
Figure 11	Transmission category for persons living with HIV/AIDS as of December 31, 2011 by gender in Los Angeles County .....	31
Figure 12	Persons reported living with HIV/AIDS as of December 31, 2011 and living HIV/AIDS rate per 100,000 population by service planning area (SPA) in Los Angeles County .....	32
Figure 13	New HIV diagnoses in 2008-2010 by zip code and service planning area (SPA) in Los Angeles County .....	Inside Back Cover
Figure 14	Persons living with a diagnosis of HIV infection as of December 31, 2011 by zip code and service planning area (SPA) in Los Angeles County .....	Back Cover

## **Section 2 Diagnoses of non-AIDS HIV**

Table 16	Persons living with non-AIDS HIV and rates per 100,000 as of December 31, 2011 by service planning area (SPA), gender, age, race/ethnicity and transmission category, Los Angeles County .	19
----------	--	----

## **Section 3 Diagnoses of AIDS**

Figure 1	Annual number of AIDS diagnoses and AIDS reports in 1987-2011, Los Angeles County .....	4
Table 17	AIDS diagnoses and rates per 100,000 by gender, year of diagnosis, and race/ethnicity, reported by December 31, 2011, Los Angeles County .....	20
Table 18	AIDS diagnoses among adults/adolescents and rates per 100,000 by gender, year of diagnosis, and race/ethnicity, reported by December 31, 2011, Los Angeles County .....	21
Table 19	AIDS diagnoses by gender, transmission category, and year of diagnosis, reported by December 31, 2011, Los Angeles County .....	22
Table 20	AIDS diagnoses among Whites by gender, transmission category, and year of diagnosis, reported by December 31, 2011, Los Angeles County .....	23
Table 21	AIDS diagnoses among Blacks by gender, transmission category, and year of diagnosis, reported by December 31, 2011, Los Angeles County .....	24
Table 22	AIDS Diagnoses among Hispanics/Latinos by gender, transmission category and year of diagnosis, reported by December 31, 2011, Los Angeles County .....	25
Table 23	Persons living with AIDS and rates per 100,000 at the end of calendar year, by gender, age, race/ethnicity, and transmission category, reported by December 31, 2011, Los Angeles County ..	26
Table 24	Persons living with AIDS and rates per 100,000 as of December 31, 2011 by service planning area (SPA), gender, age, race/ethnicity and transmission category, Los Angeles County .....	27
Figure 4	Male adult/adolescent AIDS rates by race/ethnicity and year of diagnosis, Los Angeles County, 1992-2010 .....	28

Figure 5	Female adult/adolescent AIDS rates by race/ethnicity and year of diagnosis, Los Angeles County, 1992-2010 .....	28
Figure 6	Proportion of AIDS diagnoses among adults/adolescents by race/ethnicity and year of diagnosis, Los Angeles County, 1992-2011 .....	29
Figure 7	Number of AIDS diagnoses among adults/adolescents by race/ethnicity and year of diagnosis, Los Angeles County, 1992-2011 .....	29
Appendix 1	2008 revised surveillance case definitions for human immunodeficiency virus (HIV) infection among adults and adolescents (aged $\geq 13$ years) .....	33
Appendix 2	AIDS-defining conditions .....	34
Appendix 3	Technical notes .....	35

## Commentary

AIDS case surveillance has been a core public health activity in Los Angeles County (LAC) since 1982. Non-AIDS HIV case surveillance, which also mandates laboratory reporting of confirmatory HIV tests, began in California in July 2002. Between July 2002 and April 16, 2006, 15,275 cases of HIV were reported in LAC using a non-named, coded case reporting system. In April 2006, California law was revised to require the reporting of HIV cases by name rather than by non-named code. By December 31, 2011, 76% of the LAC cases initially reported by code, have been converted to named HIV/AIDS cases. Included in this report are all 17,760 new or re-ascertained cases of non-AIDS HIV that have been submitted since 2006. It does not include the remaining 3,700 coded HIV reports that have not yet been re-ascertained with name. At the time of this writing, there is also a backlog of 4,908 laboratory notifications pending investigation to determine if they represent cases of HIV that have not yet been reported. Therefore, the HIV data presented in this report are still preliminary and the use of these data to provide estimates of trends over time is to be discouraged.

### Diagnoses of HIV infection in 2008

In 2008, a total of 2,413 persons were reported as diagnosed with an HIV infection including those diagnosed with AIDS in LAC.

**Gender:** Among persons reported with a new diagnosis of HIV infection in 2008, 272 (11%) were female, 2,125 (88%) were male, and 16 were transgender men or women (1%).

**Age:** Most (58%) cases of HIV were diagnosed among 20-39 years of age, followed by persons at age 40-49 years (25%) and 50 years or older (13%). Youth at age 13-19 years represented a small portion of new diagnoses in 2008 (3%).

**Race/Ethnicity:** Among the persons who were newly diagnosed with an HIV infection in 2008, Latinos represented the largest racial/ethnic group (41%), followed by Whites (27%), Blacks (25%), Asian/Pacific Islander (5%), and American Indian/Alaska Native (< 1%). The racial/ethnic distribution of new HIV diagnoses differed by sex. Among females, 42% were Latina, 39% were Black, and 14% were White. Among males, 45% were Latino, 22% were Black, and 27% were White.

Although far more Whites and Latinos were diagnosed with an HIV infection, Blacks who represent less than 10 percent of the general population in this county had the highest diagnosing rate at 63 per 100,000, more than triple the rate of Whites (21/100,000) and Latinos (20/100,000).

**Transmission Category:** The transmission category of HIV infection indicates how HIV was transmitted – that is, through sexual contact, injecting drugs using an HIV-contaminated needle or syringe (IDU), transmission from mother to child, or by receiving HIV-contaminated blood or blood products.

Because a substantial proportion of persons with HIV infection are reported without an identified risk factor, we use the CDC-recommended multiple imputation methods to assign a risk factor for these cases (see Technical Notes). Using this adjustment, we estimate that 80% of 2008 HIV diagnoses were in Men-who-have-sex-with-men (MSM), 11% transmitted through heterosexual contact, 5% were heterosexual injection drug users, and 4% were MSM who also inject drugs (MSM/IDU). These percentages vary among different racial/ethnic groups. For example, heterosexual contact transmission category accounted for 17% of new diagnoses among Blacks, 13% Asians/Pacific Islanders, and 11% among Latinos, but only 5% among whites.

**Geographic Distribution:** In 1998, 26 health districts in Los Angeles County (LAC) were aggregated into eight Service Planning Areas, or SPAs, in an effort to characterize local health needs regionally. As is seen with other diseases, HIV/AIDS has not affected all areas of the county equally.

Among all SPAs, the highest rate for HIV diagnosis in 2008 was reported among persons in Metro (70 per 100,000), South (30 per 100,000), and South Bay SPAs (22 per 100,000; Table 7). When broken down to cities and smaller areas, the Wholesale district of Los Angeles and the city of West Hollywood had the highest rates of HIV diagnosis (365 per 100,000 and 269 per 100,000, respectively) when compared with the rates from other cities and areas – such as Downtown (126 per 100,000) and Hollywood (85 per 100,000; Table 8). One of the possible reasons for a high rate in the Wholesale district was that many of the new diagnoses were reported among the incarcerated persons in the Los Angeles Men's Central Jail, which is situated in there.



## Persons Living with HIV/AIDS (PLWHA)

Not including the coded HIV reports that had not yet been re-ascertained with name, there were a total of 43,936 persons living with HIV/AIDS (PLWHA) in LAC as of December 31, 2011.

**Gender:** The number of PLWHA in LAC has increased steadily since 2006, when mandatory and named reporting for non-AIDS/HIV began in LAC (see Table 1). This increase can be seen for both males and females, resulting in 38,449 male, 5,045 female, and 442 transgender PLWHA in LAC by December 31, 2011. Males currently represent about 7 out of 8 (88%) PLWHA in LAC.

**Age:** Almost three-quarters (73%) of PLWHA are 40 years or older. The median age of PLWHA in LAC is 46 years. Less than 1% of PLWHA are under 20 years of age and 10% are 60 years or older.

**Race/Ethnicity:** As seen in Table 9, 40% of PLWHA in LAC are Latino, 34% White, 21% Black, and 3% Asian/Pacific Islander. Less than 1% of LAC cases are American Indian/Alaska Native. The racial/ethnic distribution of PLWHA differs by sex. Among female PLWHA, 44% are Latina, 36% are Black, and 15% are White. Among male PLWHA, 40% are Latino, 19% are Black, and 36% are White.

**Transmission Category:** Using the multiple imputation methods to adjust for persons with undetermined risk factor for HIV infection (see Technical Notes), we estimate that 77% of PLWHA are MSM, and 6% are MSM who also inject drugs (MSM/IDU). Other transmission categories include injection drug use (5%) and heterosexual contact (11%; see Table 9).

**Geographic Distribution:** Figure 12 is a map showing the number (in red), percent (in green), and rate per 100,000 population (in blue) of PLWHA reported in LAC by SPA. Persons living with HIV are based on preliminary data collected from April 17, 2006 to December 2011. Metro SPA has the highest number (16,904), proportion (38%), and rate (1,343 per 100,000) of PLWHA among SPAs in the county, followed by South Bay with 7,404 PLWHA (17%), and a rate of 457 per 100,000. Antelope Valley has the lowest number (580), percent (1%), and rate (157 per 100,000) of PLWHA in LAC.

## Annual Diagnoses of AIDS

Severe HIV Disease is also known as Acquired Immunodeficiency Syndrome, or AIDS. The annual number of AIDS diagnoses in LAC has decreased substantially from a high of approximately 4,131 cases in 1992 to 1,380 cases in 2009 (see Figure 1).

**Gender:** Similarly, AIDS diagnoses among females have also decreased from a high of 354 cases in 1995 to 166 cases in 2009. In 1993, males composed 92% and females 8% of all adult and adolescent AIDS cases in LAC. The proportion of female cases rose to 14% in 2001 and declined slightly to 12% in 2009 (see Table 17).

**Race/ethnicity:** The annual number of AIDS cases decreased for all races/ethnicities in the last 10 years. The most dramatic decreases were among Blacks, whose annual total dropped 27%, from 416 cases in 2000 to 304 cases in 2009. White cases decreased 33%, from 538 in 2000 to 358 in 2009. The number of cases among Latinos decreased 17%, from 780 in 2000 to 648 in 2009, respectively. The number of cases among American Indian and Alaska Natives remained below 10 cases a year without a significant trend. The number of cases among Asian/Pacific Islanders fluctuated between 33 and 60 cases per year in 2000-2009.

In 1992, Whites represented 48% of adults and adolescents diagnosed with AIDS in LAC while Blacks represented 20%, Latinos 28%, and Asian/Pacific Islanders only 2% (see Figure 6). However, by 2009, Latinos composed the largest proportion of annual AIDS cases with 47%, followed by Whites, 26%, Blacks, 22%, and Asian/Pacific Islanders, 3%. Not shown in the figure due to small numbers are American Indians and Alaska Natives who represented <1% of all LAC adults and adolescents diagnosed with AIDS.

**Age:** The introduction of improved HIV treatments beginning in 1996 contributed to a significant delay in the progression of HIV to AIDS for many individuals. Between 1995 (prior to the introduction of more effective HIV treatments) and 2009, the proportion of AIDS cases diagnosed among persons over age 40 years increased 34%. The most dramatic shift, however, occurred among those diagnosed at age 50 years or older, increasing from 8% in 1995 to 19% in 2009.

**HIV/AIDS DIAGNOSES, DEATHS, AND PERSONS LIVING WITH HIV/AIDS  
LOS ANGELES COUNTY, CALIFORNIA, AND THE UNITED STATES**

	<b>Los Angeles County<sup>1</sup></b>	<b>California<sup>2</sup></b>	<b>United States<sup>3</sup></b>
<b>Diagnoses of HIV infection, 2010</b>	2,062	4,939	35,825 <sup>a</sup>
<b>Diagnoses of AIDS, 2010</b>	1,149	3,019	27,100 <sup>b</sup>
<b>Persons living with HIV infection, 2011</b>	43,936	112,550	652,294 <sup>c</sup>
<b>Persons living with AIDS, 2011</b>	26,083	69,906	473,683 <sup>d</sup>
<b>Cumulative deaths in persons with HIV infection</b>	33,950	93,824	--
<b>Cumulative deaths in persons with AIDS</b>	33,167	91,929	579,931 <sup>d</sup>
<b>Cumulative diagnoses of HIV infection, 1982-2011</b>	77,886	206,374	--
<b>Cumulative diagnoses of AIDS, 1982-2011</b>	59,250	161,835	1,080,714 <sup>e</sup>

<sup>1</sup> Includes all cases reported to the HIV Epidemiology, Division of HIV and STD Programs as of December 31, 2011.

<sup>2</sup> California Office of AIDS, HIV/AIDS Surveillance Section. Data reported as of December 31, 2011.

<sup>3</sup> Centers for Disease Control and Prevention. HIV Surveillance Report, Volume 21, 2009.

(<http://www.cdc.gov/hiv/surveillance/resources/reports/2009report/pdf/2009SurveillanceReport.pdf>)

<sup>a</sup> This number only included the diagnoses of HIV infection in 2009 in 40 states with confidential named-based HIV infection reporting since at least January 2006. Therefore, it should NOT be used as the denominator when estimating the proportion of cases from LAC or California.

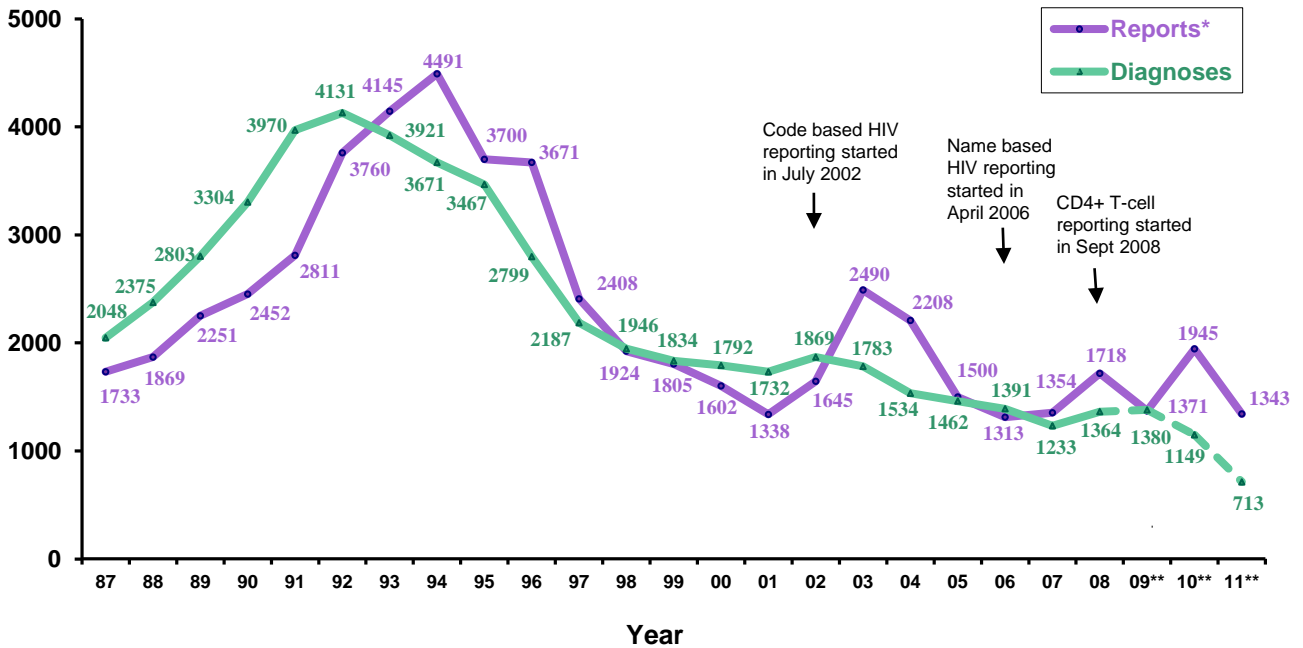
<sup>b</sup> Diagnoses of AIDS in 2009.

<sup>c</sup> Persons living with HIV infection as of 2008 in 40 states with confidential named-based HIV infection reporting since at least January 2006.

<sup>d</sup> Cumulative deaths of person with an AIDS diagnosis and persons living with AIDS as of 2008.

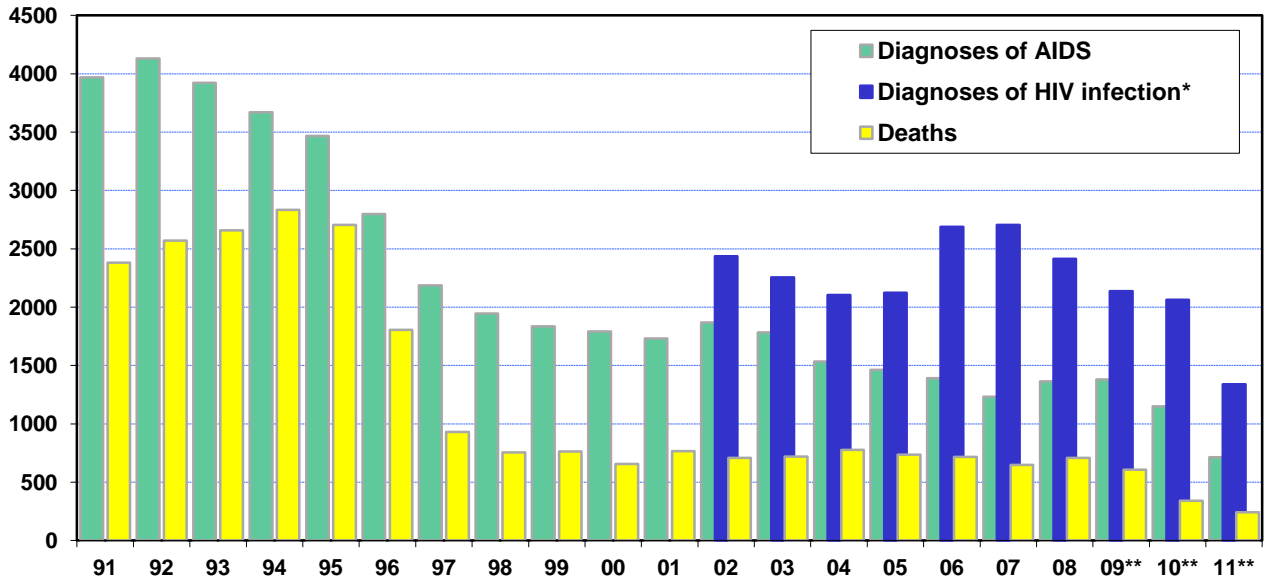
<sup>e</sup> From the beginning of the epidemic through 2009.

**FIGURE 1. ANNUAL NUMBER OF AIDS DIAGNOSES AND AIDS REPORTS IN 1987-2011, LOS ANGELES COUNTY**



\* Number of cases reported is based on system entry date.  
 \*\* Cases diagnosed in 2009-2011 are provisional due to reporting delay.

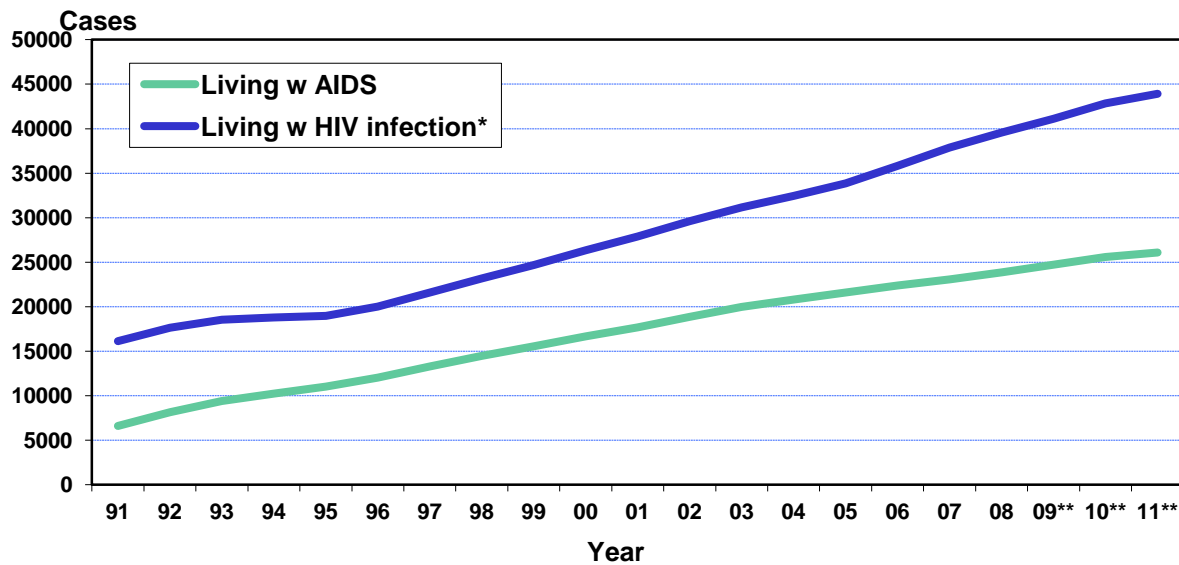
**FIGURE 2. ANNUAL DIAGNOSES OF AIDS AND HIV INFECTION AND DEATHS OF PERSONS WITH HIV INFECTION, LOS ANGELES COUNTY, 1991-2011**



\* Code-based HIV reporting was implemented from July 1, 2002 to April 17, 2006, and name-based reporting started since April 17, 2006 in California. Data are based on named reports for persons with a diagnosis of HIV infection regardless of the disease stage at time of diagnosis.

\*\* Data are provisional for 2009-2011.

**FIGURE 3. PERSONS LIVING WITH HIV INFECTION AND AIDS BY YEAR, LOS ANGELES COUNTY, 1991-2011**



\* Data on persons living with HIV infection in year 2006 or earlier may be incomplete as non-AIDS HIV only became reportable by name in April 17, 2006. The number for living with HIV infection includes both HIV and AIDS cases.

\*\* Data are provisional for 2009-2011.

**TABLE 1. DIAGNOSES, DEATHS, AND PERSONS LIVING WITH A DIAGNOSIS OF HIV INFECTION AND AIDS BY YEAR, REPORTED BY DECEMBER 31, 2011, LOS ANGELES COUNTY**

Year	Diagnoses of AIDS	Diagnoses of HIV infection <sup>1</sup>	Deaths occurred <sup>2</sup>	Living with AIDS <sup>3</sup>	Living with HIV/AIDS <sup>4</sup>
1982 - 1990	13922		8926	4998	13832
1991	3970		2382	6586	16141
1992	4131		2569	8148	17649
1993	3921		2658	9411	18536
1994	3671		2834	10250	18791
1995	3467		2704	11017	18951
1996	2799		1804	12017	20005
1997	2187		931	13276	21580
1998	1946		756	14467	23186
1999	1834		763	15540	24683
2000	1792		655	16680	26321
2001	1732		766	17661	27877
2002	1869	2437	708	18850	29606
2003	1783	2255	720	19969	31141
2004	1534	2103	778	20794	32466
2005	1462	2123	737	21600	33852
2006	1391	2687	716	22374	35823
2007	1233	2704	647	23063	37880
2008	1364	2413	707	23850	39586
2009 (5)	1380	2137	607	24723	41116
2010 (5)	1149	2062	340	25571	42838
2011 (5)	713	1340	242	26083	43936
Cumulative	59250		33950		

1. Code-based HIV reporting was implemented from July 1, 2002 to April 17, 2006, and name-based reporting started since April 17, 2006 in California. Data are based on named reports for persons with a diagnosis of HIV infection regardless of the disease stage at time of diagnosis.

2. The number of deaths among persons of HIV infection is based on the date of death report when the actual year of death is unknown.

3. Includes persons living with AIDS at the end of each year.

4. Include persons living with HIV/AIDS at the end of each year.

5. Data are provisional due to reporting delay.

TABLE 2. CUMULATIVE HIV/AIDS DIAGNOSES BY GENDER, AGE, AND RACE/ETHNICITY  
 REPORTED BY DECEMBER 31, 2011  
 LOS ANGELES COUNTY

Age at Diagnosis (years)	Race/Ethnicity						Total (3) No. (%)
	White No. (%)	Black No. (%)	Hispanic/Latino No. (%)	Asian/PI (1) No. (%)	AI/AN (2) No. (%)		
<b>MALE</b>							
<13	55 (<1)	90 (1)	125 (1)	6 (<1)	<5 (-)	282 (<1)	
13-19	280 (1)	364 (3)	555 (2)	27 (2)	11 (4)	1254 (2)	
20-29	5998 (20)	3405 (26)	7457 (31)	437 (24)	99 (34)	17640 (25)	
30-39	12664 (42)	5027 (38)	9379 (40)	735 (41)	96 (33)	28261 (40)	
40-49	7692 (25)	3056 (23)	4371 (18)	422 (24)	58 (20)	15844 (23)	
50-59	2774 (9)	1015 (8)	1370 (6)	133 (7)	17 (6)	5381 (8)	
60+	865 (3)	287 (2)	438 (2)	31 (2)	<5 (-)	1648 (2)	
Male subtotal	30328	13244	23695	1791	289	70310	
[% of subtotal]	[ 43]	[ 19]	[ 34]	[ 3]	[ <1]	[100]	
<b>FEMALE</b>							
<13	31 (2)	79 (3)	125 (4)	7 (4)	<5 (-)	244 (3)	
13-19	47 (3)	120 (4)	144 (5)	<5 (-)	<5 (-)	316 (4)	
20-29	324 (23)	695 (25)	926 (31)	39 (20)	13 (27)	2021 (27)	
30-39	462 (33)	940 (33)	925 (30)	67 (35)	13 (27)	2436 (32)	
40-49	293 (21)	640 (23)	514 (17)	47 (24)	17 (35)	1527 (20)	
50-59	142 (10)	284 (10)	288 (9)	23 (12)	<5 (-)	747 (10)	
60+	91 (7)	70 (2)	111 (4)	9 (5)	<5 (-)	285 (4)	
Female subtotal	1390	2828	3033	194	49	7576	
[% of subtotal]	[ 18]	[ 37]	[ 40]	[ 3]	[ 1]	[100]	
<b>BOTH</b>							
<13	86 (<1)	169 (1)	250 (1)	13 (1)	<5 (-)	526 (1)	
13-19	327 (1)	484 (3)	699 (3)	29 (1)	12 (4)	1570 (2)	
20-29	6322 (20)	4100 (26)	8383 (31)	476 (24)	112 (33)	19661 (25)	
30-39	13126 (41)	5967 (37)	10304 (39)	802 (40)	109 (32)	30697 (39)	
40-49	7985 (25)	3696 (23)	4885 (18)	469 (24)	75 (22)	17371 (22)	
50-59	2916 (9)	1299 (8)	1658 (6)	156 (8)	21 (6)	6128 (8)	
60+	956 (3)	357 (2)	549 (2)	40 (2)	5 (1)	1933 (2)	
Total	31718	16072	26728	1985	338	77886	
[% of total]	[ 41]	[ 21]	[ 34]	[ 3]	[ <1]	[100]	

1. Includes 16 Burmese, 86 Cambodian, 163 Chinese, 509 Filipino, 16 Guamanian, 37 Hawaiian, 34 Asian Indian, 34 Indonesian, 169 Japanese, 77 Korean, <5 Laotian, 14 Malayan, 19 Pacific Islander, <5 Pakistani, 35 Samoan, 5 Singaporean, <5 Bangladeshi, 7 Sri Lankan, 6 East Indian, <5 Tahitian, 46 Taiwanese, 142 Thai, <5 Tongan, and 148 Vietnamese; 408 are of unknown Asian ethnicity.
2. AI/AN=American Indian/Alaska Native.
3. Total includes persons who have multiple races/ethnicities or have missing information on race/ethnicity.

TABLE 3. CUMULATIVE HIV/AIDS DIAGNOSES AMONG ADULTS/ADOLESCENTS BY GENDER, TRANSMISSION CATEGORY, AND RACE/ETHNICITY  
 REPORTED BY DECEMBER 31, 2011  
 LOS ANGELES COUNTY

Adult/Adolescent Transmission Category (1)	Race/Ethnicity					Total (3) No. (%)
	White No. (%)	Black No. (%)	Hispanic/Latino No. (%)	Asian/PI No. (%)	AI/AN (2) No. (%)	
<b>MALE</b>						
Male-male sexual contact	26514 ( 88)	10210 ( 78)	20028 ( 85)	1637 ( 92)	214 ( 75)	59354 ( 85)
Injection drug user (IDU)	917 ( 3)	1189 ( 9)	1188 ( 5)	27 ( 1)	16 ( 6)	3393 ( 5)
Male-male sexual contact/IDU	2423 ( 8)	1271 ( 10)	1458 ( 6)	60 ( 3)	51 ( 18)	5372 ( 8)
Hemophilia/coagulation disorder	91 (<1)	24 (<1)	39 (<1)	9 ( 1)	<5 ( - )	164 (<1)
Heterosexual contact (4)	203 ( 1)	424 ( 3)	789 ( 3)	36 ( 2)	<5 ( - )	1470 ( 2)
Transfusion recipient	124 (<1)	36 (<1)	68 (<1)	16 ( 1)	<5 ( - )	245 (<1)
Other/Undetermined	<5 ( - )	<5 ( - )	<5 ( - )	<5 ( - )	<5 ( - )	31 (<1)
Male subtotal	30273	13154	23570	1785	285	70028
[% of subtotal]	[ 43]	[ 19]	[ 34]	[ 3]	[ <1]	[100]
<b>FEMALE</b>						
Injection drug user (IDU)	560 ( 41)	866 ( 31)	495 ( 17)	18 ( 10)	19 ( 39)	1988 ( 27)
Hemophilia/coagulation disorder	10 ( 1)	5 (<1)	5 (<1)	<5 ( - )	<5 ( - )	21 (<1)
Heterosexual contact (4)	718 ( 53)	1835 ( 67)	2341 ( 80)	158 ( 84)	29 ( 59)	5121 ( 70)
Transfusion recipient	69 ( 5)	42 ( 2)	67 ( 2)	11 ( 6)	<5 ( - )	190 ( 3)
Perinatal exposure	<5 ( - )	<5 ( - )	<5 ( - )	<5 ( - )	<5 ( - )	<5 ( - )
Other/Undetermined	<5 ( - )	<5 ( - )	<5 ( - )	<5 ( - )	<5 ( - )	11 (<1)
Female subtotal	1359	2749	2908	187	49	7332
[% of subtotal]	[ 19]	[ 37]	[ 40]	[ 3]	[ 1]	[100]
<b>BOTH</b>						
Male-male sexual contact	26514 ( 84)	10210 ( 64)	20028 ( 76)	1637 ( 83)	214 ( 64)	59354 ( 77)
Injection drug user (IDU)	1477 ( 5)	2054 ( 13)	1683 ( 6)	45 ( 2)	36 ( 11)	5381 ( 7)
Male-male sexual contact/IDU	2423 ( 8)	1271 ( 8)	1458 ( 6)	60 ( 3)	51 ( 15)	5372 ( 7)
Hemophilia/coagulation disorder	101 (<1)	29 (<1)	44 (<1)	9 (<1)	<5 ( - )	185 (<1)
Heterosexual contact (4)	920 ( 3)	2259 ( 14)	3130 ( 12)	194 ( 10)	32 ( 10)	6591 ( 9)
Transfusion recipient	193 ( 1)	78 (<1)	135 ( 1)	27 ( 1)	<5 ( - )	435 ( 1)
Perinatal exposure	<5 ( - )	<5 ( - )	<5 ( - )	<5 ( - )	<5 ( - )	<5 ( - )
Other/Undetermined	<5 ( - )	<5 ( - )	<5 ( - )	<5 ( - )	<5 ( - )	42 (<1)
Total	31632	15903	26478	1972	334	77360
[% of total]	[ 41]	[ 21]	[ 34]	[ 3]	[ <1]	[100]

1. Persons without an identified risk factor are assigned a risk factor using multiple imputation (MI) methods (see Technical Notes).
2. AI/AN=American Indian/Alaska Native.
3. Total includes persons who have multiple races/ethnicities or have missing information on race/ethnicity.
4. Heterosexual contact with a person who is HIV-infected or at increased risk for HIV.

TABLE 4. CUMULATIVE HIV/AIDS DIAGNOSES AMONG CHILDREN <13 YEARS OF AGE  
BY TRANSMISSION CATEGORY, AND RACE/ETHNICITY  
REPORTED BY DECEMBER 31, 2011  
LOS ANGELES COUNTY

Pediatric (<13 years) Transmission Category (1)	Race/Ethnicity				Total No. (%)
	White No. (%)	Black No. (%)	Hispanic/Latino No. (%)	Other (2) No. (%)	
Perinatal exposure	42 ( 49)	137 ( 81)	192 ( 77)	8 ( 47)	381 ( 72)
Hemophilia or coagulation disorder	15 ( 17)	2 ( 1)	12 ( 5)	2 ( 12)	31 ( 6)
Transfusion recipient	27 ( 31)	25 ( 15)	32 ( 13)	7 ( 41)	93 ( 18)
Other/Undetermined	2 ( 2)	5 ( 3)	14 ( 6)	0 ( 0)	21 ( 4)
<b>Total</b>	<b>86</b>	<b>169</b>	<b>250</b>	<b>17</b>	<b>526</b>
[% of total]	[ 16]	[ 32]	[ 48]	[ 3]	[100]

1. See technical notes for information on transmission category
2. Other includes Asian, Pacific Islander, American Indian and Alaskan Native.

TABLE 5. HIV/AIDS DIAGNOSES AMONG CHILDREN <13 YEARS OF AGE  
BY RACE/ETHNICITY, TRANSMISSION CATEGORY, AND YEAR OF HIV DIAGNOSIS  
REPORTED BY DECEMBER 31, 2011  
LOS ANGELES COUNTY

Pediatric (<13 years)	Year of Diagnosis					
	Before 2007 No. (%)	2007 No. (%)	2008 No. (%)	2009 (1) No. (%)	2010 (1) No. (%)	2011 (1) No. (%)
<b>RACE/ETHNICITY</b>						
White	85 ( 17)	1 ( 17)	0 ( 0)	0 ( -)	0 ( 0)	0 ( 0)
Black	161 ( 32)	3 ( 50)	1 ( 33)	0 ( -)	2 ( 33)	2 (100)
Hispanic/Latino	244 ( 48)	2 ( 33)	1 ( 33)	0 ( -)	3 ( 50)	0 ( 0)
Other(2)	15 ( 3)	0 ( 0)	1 ( 33)	0 ( -)	1 ( 17)	0 ( 0)
<b>TRANSMISSION CATEGORY (3)</b>						
Perinatal exposure (4)	364 ( 72)	6 (100)	3 (100)	0 ( -)	6 (100)	2 (100)
Hemophilia/coagulation disorder	31 ( 6)	0 ( 0)	0 ( 0)	0 ( -)	0 ( 0)	0 ( 0)
Transfusion recipient	93 ( 18)	0 ( 0)	0 ( 0)	0 ( -)	0 ( 0)	0 ( 0)
Other/Undetermined	21 ( 4)	0 ( 0)	0 ( 0)	0 ( -)	0 ( 0)	0 ( 0)
<b>Total</b>	<b>509</b>	<b>6</b>	<b>3</b>	<b>0</b>	<b>6</b>	<b>2</b>
[% of total]	[ 97]	[ 1]	[ 1]	[ 0]	[ 1]	[ 0]

1. Data are provisional due to reporting delay.
2. Other includes Asian, Pacific Islander, American Indian and Alaskan Native.
3. See technical notes for information on transmission category.
4. Year of diagnosis may not indicate year of birth, nor indicate perinatal case was born in Los Angeles County.

TABLE 6. HIV/AIDS DIAGNOSES AND RATE PER 100,000 (1) BY GENDER, AGE, RACE/ETHNICITY, TRANSMISSION CATEGORY, SERVICE PLANNING AREA (SPA) AND YEAR OF HIV DIAGNOSIS REPORTED BY DECEMBER 31, 2011, LOS ANGELES COUNTY

	Year of Diagnosis											
	2006		2007		2008		2009 (2)		2010 (2)		2011 (2)	
	No.	(%) Rate	No.	(%) Rate	No.	(%) Rate	No.	(%) Rate	No.	(%) Rate	No.	(%) Rate
<b>GENDER</b>												
Male	2284	(85) 45	2329	(86) 46	2125	(88) 41	1854	(87) 36	1819	(88) 35	1207	(90) 23
Female	380	(14) 7	350	(13) 7	272	(11) 5	262	(12) 5	225	(11) 4	125	(9) 2
Transgender(3)	23	(1) -	25	(1) -	16	(1) -	21	(1) -	18	(1) -	8	(1) -
<b>AGE GROUP</b>												
<13	<5	(-) -	6	(<1) -	<5	(-) -	<5	(-) -	6	(<1) -	<5	(-) -
13-19	72	(3) 7	69	(3) 6	70	(3) 6	73	(3) 7	73	(4) 7	35	(3) 3
20-29	680	(25) 47	769	(28) 53	706	(29) 48	653	(31) 44	651	(32) 41	452	(34) 29
30-39	881	(33) 55	836	(31) 53	706	(29) 46	633	(30) 41	585	(28) 37	395	(29) 25
40-49	705	(26) 46	691	(26) 45	607	(25) 39	498	(23) 32	486	(24) 32	298	(22) 20
50-59	277	(10) 24	262	(10) 22	250	(10) 20	217	(10) 17	206	(10) 16	131	(10) 10
60+	68	(3) 5	71	(3) 5	71	(3) 5	63	(3) 4	55	(3) 3	27	(2) 2
<b>RACE/ETHNICITY</b>												
White	737	(27) 24	739	(27) 24	651	(27) 21	527	(25) 17	521	(25) 17	336	(25) 11
Black	594	(22) 64	636	(24) 67	594	(25) 63	508	(24) 54	498	(24) 53	287	(21) 30
Hispanic/Latino	1192	(44) 24	1148	(42) 24	996	(41) 20	988	(46) 20	915	(44) 18	642	(48) 13
Asian/PI	114	(4) 8	117	(4) 9	112	(5) 8	85	(4) 6	77	(4) 5	54	(4) 4
AI/AN	11	(<1) 35	9	(<1) 29	11	(<1) 38	12	(1) 43	11	(1) 40	9	(1) 32
<b>TRANSMISSION CATEGORY(3,4)</b>												
MSM	2039	(76) -	2135	(79) -	1935	(80) -	1739	(81) -	1687	(82) -	1143	(85) -
IDU	148	(5) -	125	(5) -	109	(5) -	74	(3) -	79	(4) -	34	(3) -
MSM/IDU	133	(5) -	105	(4) -	97	(4) -	72	(3) -	70	(3) -	42	(3) -
Hemophi/Transfusion	<5	(-) -	<5	(-) -	<5	(-) -	<5	(-) -	<5	(-) -	<5	(-) -
Heterosexual contact	358	(13) -	328	(12) -	262	(11) -	252	(12) -	213	(10) -	119	(9) -
Perinatal exposure	<5	(-) -	6	(<1) -	<5	(-) -	<5	(-) -	6	(<1) -	<5	(-) -
Other/Undetermined	<5	(-) -	<5	(-) -	7	(<1) -	<5	(-) -	8	(<1) -	<5	(-) -
<b>SERVICE PLANNING AREA</b>												
Antelope Valley[1]	31	(1) 9	42	(2) 12	56	(2) 16	48	(2) 13	41	(2) 11	20	(1) 5
San Fernando[2]	355	(13) 17	383	(14) 18	337	(14) 15	287	(13) 13	231	(11) 10	163	(12) 7
San Gabriel[3]	190	(7) 10	225	(8) 12	178	(7) 9	167	(8) 9	137	(7) 7	111	(8) 6
Metro[4]	1014	(38) 80	1016	(38) 81	881	(37) 70	775	(36) 62	773	(38) 61	444	(33) 35
West[5]	133	(5) 21	131	(5) 20	102	(4) 16	82	(4) 13	108	(5) 16	61	(5) 9
South[6]	334	(12) 32	312	(12) 30	316	(13) 30	278	(13) 26	258	(13) 24	174	(13) 16
East[7]	163	(6) 12	188	(7) 14	180	(7) 13	154	(7) 11	167	(8) 12	128	(10) 9
South Bay/LB[8]	462	(17) 29	405	(15) 25	359	(15) 22	342	(16) 21	338	(16) 21	239	(18) 15
<b>Total (5)</b>	<b>2687</b>	<b>(100) 26</b>	<b>2704</b>	<b>(100) 26</b>	<b>2413</b>	<b>(100) 23</b>	<b>2137</b>	<b>(100) 21</b>	<b>2062</b>	<b>(100) 20</b>	<b>1340</b>	<b>(100) 13</b>

1. Rate for 2011 are based on year 2010 population estimates. Rates that are based on observations fewer than 12 may not be Reliable (see Technical Notes).
2. Data are provisional due to reporting delay.
3. Rates for transgender and transmission category are not calculated, because of the lack of denominator data.
4. Persons without an identified risk factor are assigned a risk factor using multiple imputation (MI) methods (see Technical Notes).
5. Total includes persons who have multiple race/ethnicities or have missing information on race/ethnicity or SPA.



TABLE 7. HIV/AIDS DIAGNOSES AND RATES (1) PER 100,000  
 BY SERVICE PLANNING AREA/HEALTH DISTRICT (2) OF RESIDENCE, AND YEAR OF HIV DIAGNOSIS  
 REPORTED BY DECEMBER 31, 2011  
 LOS ANGELES COUNTY

Service Planning Area/ Health District	Year of Diagnosis										Cumulative 1982-2011 No. (%)
	2007 No. (%) Rate	2008 No. (%) Rate	2009 (3) No. (%) Rate	2010 (3) No. (%) Rate	2011 (3) No. (%) Rate						
Antelope Valley[1]	42 ( 2) 12	56 ( 2) 16	48 ( 2) 13	41 ( 2) 11	20 ( 1) 5	889 ( 1)					
Antelope Valley	42 ( 2) 12	56 ( 2) 16	48 ( 2) 13	41 ( 2) 11	20 ( 1) 5	889 ( 1)					
San Fernando[2]	383 ( 14) 18	337 ( 14) 15	287 ( 13) 13	231 ( 11) 10	163 ( 12) 7	11139 ( 14)					
East Valley	123 ( 5) 27	120 ( 5) 26	83 ( 4) 18	72 ( 3) 15	60 ( 4) 13	4136 ( 5)					
Glendale	44 ( 2) 12	36 ( 1) 10	44 ( 2) 12	23 ( 1) 6	15 ( 1) 4	1658 ( 2)					
San Fernando	41 ( 2) 9	41 ( 2) 9	33 ( 2) 7	35 ( 2) 7	25 ( 2) 5	1114 ( 1)					
West Valley	175 ( 6) 20	140 ( 6) 16	127 ( 6) 14	101 ( 5) 11	63 ( 5) 7	4231 ( 5)					
San Gabriel[3]	225 ( 8) 12	178 ( 7) 9	167 ( 8) 9	137 ( 7) 7	111 ( 8) 6	5610 ( 7)					
Alhambra	25 ( 1) 7	20 ( 1) 6	23 ( 1) 6	24 ( 1) 7	21 ( 2) 6	925 ( 1)					
El Monte	54 ( 2) 11	49 ( 2) 10	40 ( 2) 8	34 ( 2) 7	26 ( 2) 5	1301 ( 2)					
Foothill	38 ( 1) 12	27 ( 1) 9	31 ( 1) 10	20 ( 1) 6	21 ( 2) 7	941 ( 1)					
Pasadena	31 ( 1) 21	33 ( 1) 22	27 ( 1) 18	16 ( 1) 10	7 ( 1) 5	952 ( 1)					
Pomona	77 ( 3) 13	49 ( 2) 9	46 ( 2) 8	43 ( 2) 7	36 ( 3) 6	1491 ( 2)					
Metro[4]	1016 ( 38) 81	881 ( 37) 70	775 ( 36) 62	773 ( 37) 61	444 ( 33) 35	30450 ( 39)					
Central	420 ( 16) 113	407 ( 17) 110	320 ( 15) 87	262 ( 13) 70	139 ( 10) 37	9793 ( 13)					
Hollywood-Wilshire	503 ( 19) 93	399 ( 17) 75	373 ( 17) 71	416 ( 20) 78	266 ( 20) 50	17306 ( 22)					
Northeast	93 ( 3) 26	75 ( 3) 21	82 ( 4) 24	95 ( 5) 27	39 ( 3) 11	3351 ( 4)					
West[5]	131 ( 5) 20	102 ( 4) 16	82 ( 4) 13	108 ( 5) 16	61 ( 5) 9	4470 ( 6)					
West	131 ( 5) 20	102 ( 4) 16	82 ( 4) 13	108 ( 5) 16	61 ( 5) 9	4470 ( 6)					
South[6]	312 ( 12) 30	316 ( 13) 30	278 ( 13) 26	258 ( 13) 24	174 ( 13) 16	8049 ( 10)					
Compton	69 ( 3) 24	62 ( 3) 21	43 ( 2) 15	50 ( 2) 17	43 ( 3) 15	1428 ( 2)					
South	52 ( 2) 28	56 ( 2) 29	52 ( 2) 27	46 ( 2) 24	34 ( 3) 17	1345 ( 2)					
Southeast	51 ( 2) 29	51 ( 2) 28	47 ( 2) 25	38 ( 2) 21	20 ( 1) 11	1190 ( 2)					
Southwest	140 ( 5) 36	147 ( 6) 38	136 ( 6) 36	124 ( 6) 31	77 ( 6) 19	4086 ( 5)					
East[7]	188 ( 7) 14	180 ( 7) 13	154 ( 7) 11	167 ( 8) 12	128 ( 10) 9	4740 ( 6)					
Bellflower	40 ( 1) 11	42 ( 2) 11	31 ( 1) 8	39 ( 2) 11	28 ( 2) 8	988 ( 1)					
East Los Angeles	25 ( 1) 11	31 ( 1) 14	32 ( 1) 14	30 ( 1) 14	23 ( 2) 11	1023 ( 1)					
San Antonio	75 ( 3) 17	61 ( 3) 13	62 ( 3) 14	68 ( 3) 15	50 ( 4) 11	1702 ( 2)					
Whittier	48 ( 2) 14	46 ( 2) 14	29 ( 1) 9	30 ( 1) 9	27 ( 2) 8	1027 ( 1)					
South Bay[8]	405 ( 15) 25	359 ( 15) 22	342 ( 16) 21	338 ( 16) 21	239 ( 18) 15	12318 ( 16)					
Harbor	39 ( 1) 18	16 ( 1) 7	18 ( 1) 8	36 ( 2) 17	12 ( 1) 6	761 ( 1)					
Inglewood	106 ( 4) 24	95 ( 4) 22	87 ( 4) 20	95 ( 5) 22	55 ( 4) 13	2527 ( 3)					
Long Beach	214 ( 8) 43	210 ( 9) 42	187 ( 9) 38	166 ( 8) 33	149 ( 11) 30	7654 ( 10)					
Torrance	46 ( 2) 10	38 ( 2) 8	50 ( 2) 11	41 ( 2) 9	23 ( 2) 5	1376 ( 2)					
Total (4)	2704 (100) 26	2413 (100) 23	2137 (100) 21	2062 (100) 20	1340 (100) 13	77886 (100)					

1. Rates are based on population estimates from 2007-2010. Rates for 2011 are calculated using population estimates for 2010. Rates based on observations fewer than 12 may not be reliable (see Technical Notes).
2. Service Planning Area and Health District boundaries are based on the newly released definition as of 2011.
3. Data are provisional due to reporting delay.
4. Total includes persons with no information on Service Planning Area/Health District.

TABLE 8. HIV/AIDS DIAGNOSES AND RATES PER 100,000 (1,2) BY YEAR OF HIV DIAGNOSIS AND CITY/AREA (3) OF RESIDENCE  
TOP 35 CITIES/AREAS (4) RANKED BY 2010 RATE, REPORTED BY DECEMBER 31, 2011  
LOS ANGELES COUNTY

City/Area	Year of Diagnosis				
	2007 No. (Rate)	2008 No. (Rate)	2009 (1) No. (Rate)	2010 (1) No. (Rate)	2011 (1) No. (Rate)
West Hollywood	109 (291.1)	101 (269.0)	80 (212.6)	102 (269.2)	53 (139.9)
Wholesale (5)	204 (349.4)	211 (364.6)	170 (295.5)	129 (216.5)	46 ( 77.2)
Downtown	18 ( 83.4)	28 (126.3)	18 ( 79.1)	25 (113.4)	5 ( 22.7)
Hollywood	249 (100.8)	203 ( 85.1)	205 ( 88.7)	186 ( 77.0)	151 ( 62.5)
Miracle Mile S	28 ( 56.3)	18 ( 35.5)	9 ( 17.4)	31 ( 61.4)	10 ( 19.8)
Miracle Mile N	25 ( 57.3)	24 ( 52.9)	17 ( 36.2)	21 ( 46.0)	9 ( 19.7)
Crenshaw	36 ( 49.3)	39 ( 54.0)	33 ( 46.0)	34 ( 45.5)	15 ( 20.1)
Silverlake/Chinatown	74 ( 87.0)	53 ( 62.6)	41 ( 48.5)	36 ( 42.1)	21 ( 24.6)
Vermont Square	29 ( 37.4)	27 ( 34.9)	37 ( 47.9)	30 ( 37.2)	12 ( 14.9)
Willowbrook	10 ( 24.9)	20 ( 51.3)	7 ( 18.4)	13 ( 33.6)	7 ( 18.1)
Adams-La Brea	30 ( 51.1)	14 ( 24.0)	22 ( 37.9)	20 ( 33.2)	7 ( 11.6)
Westmont / West Athens	21 ( 48.1)	12 ( 28.6)	10 ( 24.7)	13 ( 31.2)	<5 ( - )
Wilshir Center N	27 ( 31.2)	27 ( 31.2)	26 ( 30.0)	26 ( 30.2)	12 ( 14.0)
Ladera Heights	<5 ( - )	<5 ( - )	<5 ( - )	5 ( 30.1)	<5 ( - )
Boyle Heights	37 ( 36.4)	30 ( 30.8)	27 ( 28.9)	30 ( 29.7)	8 ( 7.9)
Westlake	51 ( 37.3)	47 ( 34.4)	41 ( 30.1)	40 ( 29.3)	31 ( 22.7)
El Segundo	<5 ( - )	<5 ( - )	<5 ( - )	5 ( 29.3)	<5 ( - )
Long Beach	192 ( 38.8)	192 ( 38.8)	171 ( 34.5)	144 ( 28.9)	131 ( 26.3)
Wilshir Center S	36 ( 36.1)	19 ( 19.2)	28 ( 28.5)	28 ( 28.6)	23 ( 23.5)
Inglewood	34 ( 28.6)	37 ( 31.1)	35 ( 29.4)	32 ( 26.9)	15 ( 12.6)
W Adms-Expo Park	40 ( 29.2)	48 ( 35.0)	36 ( 26.2)	37 ( 26.8)	25 ( 18.1)
N Shoestring	<5 ( - )	<5 ( - )	<5 ( - )	6 ( 26.8)	5 ( 22.3)
S Vermont	36 ( 33.4)	38 ( 35.6)	38 ( 35.9)	30 ( 26.6)	11 ( 9.8)
Huntington Park	10 ( 15.4)	6 ( 9.3)	13 ( 20.1)	17 ( 26.5)	10 ( 15.6)
Watts	13 ( 33.2)	11 ( 27.3)	10 ( 24.2)	11 ( 26.4)	10 ( 24.0)
Wilmington	12 ( 18.7)	5 ( 7.7)	5 ( 7.5)	17 ( 25.8)	<5 ( - )
Graham	8 ( 26.9)	15 ( 49.9)	6 ( 19.8)	7 ( 23.5)	12 ( 40.3)
North Hollywood	58 ( 43.5)	52 ( 38.6)	32 ( 23.5)	31 ( 22.6)	26 ( 19.0)
Los Feliz	34 ( 76.9)	18 ( 39.9)	21 ( 45.6)	10 ( 21.7)	7 ( 15.2)
Eagle Rock-Glassell	17 ( 21.8)	13 ( 16.4)	15 ( 18.7)	17 ( 21.6)	6 ( 7.6)
El Sereno	13 ( 24.3)	11 ( 20.4)	9 ( 16.5)	11 ( 20.6)	<5 ( - )
Studio City	23 ( 43.6)	19 ( 34.8)	16 ( 28.4)	11 ( 20.2)	10 ( 18.4)
Norwalk	14 ( 12.7)	15 ( 13.6)	6 ( 5.4)	22 ( 19.9)	5 ( 4.5)
Barnes City	8 ( 22.9)	<5 ( - )	<5 ( - )	7 ( 19.6)	<5 ( - )
Santa Monica	16 ( 17.6)	9 ( 9.8)	13 ( 14.0)	18 ( 19.4)	<5 ( - )

1. Data are provisional due to reporting delay.
2. Rates are based on population estimates for 2007-2010. Rates for 2011 are calculated using population estimates for 2010. Rates based on observation fewer than 12 may not be reliable (see Technical Notes).
3. The city of Los Angeles is broken down into "areas" or geographic units with more than 15,000 residents. Cities and areas are approximately defined by aggregating the associated census tracts based on the location of their centroid.
4. Includes cities and areas that had more than 15,000 residents and at least 5 persons diagnosed with HIV/AIDS in 2010.
5. Includes persons diagnosed with HIV/AIDS during incarceration at Los Angeles County Central Jail.

TABLE 9. HIV/AIDS DIAGNOSES IN 2010, PERSONS LIVING WITH HIV/AIDS, AND CUMULATIVE BY GENDER, AGE, RACE/ETHNICITY AND TRANSMISSION CATEGORY REPORTED BY DECEMBER 31, 2011, LOS ANGELES COUNTY

	Male						Female						Total					
	Year 2010(1)		Living(1)		Cumulative(1)		Year 2010(1)		Living(1)		Cumulative(1)		Year 2010(1)		Living(1)		Cumulative(1)	
	No. (%)	Rate	No. (%)	Rate	No. (%)	No. (%)	Rate	No. (%)	Rate	No. (%)	No. (%)	Rate	No. (%)	Rate	No. (%)	Rate	No. (%)	Rate
<b>AGE GROUP (2)</b>																		
<13	<5 ( -)	-	22 (<1)	2	282 (<1)	<5 ( -)	-	20 (<1)	2	244 ( 3)	6 (<1)	<1	42 (<1)	2	526 ( 1)			
13-19	67 ( 4)	13	121 (<1)	23	1254 ( 2)	6 ( 3)	1	68 ( 1)	13	316 ( 4)	73 ( 4)	7	189 (<1)	18	1570 ( 2)			
20-29	606 ( 33)	75	3022 ( 8)	372	17640 ( 25)	45 ( 20)	6	443 ( 9)	58	2021 ( 27)	651 ( 32)	41	3465 ( 8)	220	19661 ( 25)			
30-39	530 ( 29)	66	6913 ( 18)	859	28261 ( 40)	55 ( 24)	7	1080 ( 21)	139	2436 ( 32)	585 ( 28)	37	7993 ( 18)	505	30697 ( 39)			
40-49	425 ( 23)	56	14238 ( 37)	1864	15844 ( 23)	61 ( 27)	8	1683 ( 33)	224	1527 ( 20)	486 ( 24)	32	15921 ( 36)	1051	17371 ( 22)			
50-59	164 ( 9)	27	10592 ( 27)	1734	5381 ( 8)	42 ( 19)	7	1213 ( 24)	188	747 ( 10)	206 ( 10)	16	11805 ( 27)	940	6128 ( 8)			
60+	39 ( 2)	6	3966 ( 10)	576	1648 ( 2)	16 ( 7)	2	555 ( 11)	62	285 ( 4)	55 ( 3)	3	4521 ( 10)	286	1933 ( 2)			
<b>RACE/ETHNICITY</b>																		
White	490 ( 27)	32	14171 ( 36)	923	30328 ( 43)	31 ( 14)	2	768 ( 15)	50	1390 ( 18)	521 ( 25)	17	14939 ( 34)	485	31718 ( 41)			
Black	408 ( 22)	93	7294 ( 19)	1655	13244 ( 19)	90 ( 40)	18	1834 ( 36)	364	2828 ( 37)	498 ( 24)	53	9128 ( 21)	966	16072 ( 21)			
Hispanic/Latino	818 ( 45)	32	15409 ( 40)	610	23695 ( 34)	97 ( 43)	4	2231 ( 44)	91	3033 ( 40)	915 ( 44)	18	17640 ( 40)	354	26728 ( 34)			
Asian/PI	74 ( 4)	11	1285 ( 3)	190	1791 ( 3)	<5 ( -)	-	142 ( 3)	19	194 ( 3)	77 ( 4)	5	1427 ( 3)	100	1985 ( 3)			
AI/AN	10 ( 1)	74	161 (<1)	1197	289 (<1)	<5 ( -)	-	31 ( 1)	215	49 ( 1)	11 ( 1)	40	192 (<1)	690	338 (<1)			
<b>TRANSMISSION CATEGORY (3)</b>																		
MSM	1687 ( 92)		33621 ( 86)		59354 ( 84)	- ( -)		- ( -)		- ( -)	1687 ( 82)		33621 ( 77)		59354 ( 76)			
IDU	44 ( 2)		1309 ( 3)		3393 ( 5)	35 ( 15)		1072 ( 21)		1988 ( 26)	79 ( 4)		2381 ( 5)		5381 ( 7)			
MSM/IDU	70 ( 4)		2773 ( 7)		5372 ( 8)	- ( -)		- ( -)		- ( -)	70 ( 3)		2773 ( 6)		5372 ( 7)			
Hemophi/Transfusion	<5 ( -)		89 (<1)		491 ( 1)	<5 ( -)		58 ( 1)		253 ( 3)	<5 ( -)		147 (<1)		744 ( 1)			
Heterosexual contact	26 ( 1)		912 ( 2)		1469 ( 2)	187 ( 82)		3789 ( 75)		5121 ( 68)	213 ( 10)		4701 ( 11)		6591 ( 8)			
Perinatal exposure	<5 ( -)		132 (<1)		186 (<1)	<5 ( -)		127 ( 3)		196 ( 3)	6 (<1)		259 ( 1)		382 (<1)			
Other/Undetermined	5 (<1)		38 (<1)		45 (<1)	<5 ( -)		16 (<1)		18 (<1)	8 (<1)		54 (<1)		63 (<1)			
<b>Total (4)</b>	<b>1835 [ 89]</b>	<b>35</b>	<b>38874 [ 88]</b>	<b>749</b>	<b>70310 [ 90]</b>	<b>227 [ 11]</b>	<b>4</b>	<b>5062 [ 12]</b>	<b>96</b>	<b>7576 [ 10]</b>	<b>2062 [100]</b>	<b>20</b>	<b>43936 [100]</b>	<b>420</b>	<b>77886 [100]</b>			

1. Data are provisional due to reporting delay. Rates based on observations fewer than 12 may not be reliable (see Technical Notes).
2. Age distributions for year 2010 and cumulative cases are based on age at the time of HIV diagnosis while the age distribution for persons living with HIV/AIDS is based on age as of December 31, 2011.
3. Persons without an identified risk factor are assigned a risk factor using multiple imputation (MI) methods (see Technical Notes). Rate for transmission category is not calculated, because of the lack of denominator data.
4. Percent of total cases that are male and female is shown in this row. Total includes persons who have multiple races/ethnicities or have missing information on race/ethnicity.

TABLE 10. NEW HIV/AIDS DIAGNOSES IN 2008 (1) AND RATE PER 100,000 (1,2) BY GENDER, AGE, RACE/ETHNICITY, TRANSMISSION CATEGORY, AND SERVICE PLANNING AREA (SPA) REPORTED BY DECEMBER 31, 2011, LOS ANGELES COUNTY

Service Planning Area	Antelope Valley No. (%) Rate	San Fernando No. (%) Rate	San Gabriel No. (%) Rate	Metro No. (%) Rate	West No. (%) Rate	South No. (%) Rate	East No. (%) Rate	South Bay/LB No. (%) Rate	Total (3) No. (%) Rate
<b>GENDER (4)</b>									
Male	43 ( 77) 24	300 ( 89) 28	156 ( 88) 17	811 ( 92) 126	95 ( 93) 30	254 ( 80) 50	155 ( 86) 23	321 ( 89) 40	2139 ( 89) 42
Female	13 ( 23) 7	37 ( 11) 3	22 ( 12) 2	70 ( 8) 11	7 ( 7) 2	62 ( 20) 12	25 ( 14) 4	38 ( 11) 5	274 ( 11) 5
<b>AGE GROUP</b>									
<30	14 ( 25) 8	116 ( 34) 13	56 ( 31) 7	260 ( 30) 53	30 ( 29) 15	124 ( 39) 22	62 ( 34) 9	117 ( 33) 17	779 ( 32) 17
30-39	18 ( 32) 46	81 ( 24) 26	48 ( 27) 19	284 ( 32) 121	25 ( 25) 21	91 ( 29) 60	56 ( 31) 28	102 ( 28) 44	706 ( 29) 46
40-49	12 ( 21) 23	93 ( 28) 27	50 ( 28) 18	228 ( 26) 111	33 ( 32) 29	58 ( 18) 45	32 ( 18) 17	98 ( 27) 39	607 ( 25) 39
50+	12 ( 21) 14	47 ( 14) 8	24 ( 13) 4	109 ( 12) 34	14 ( 14) 7	43 ( 14) 21	30 ( 17) 9	42 ( 12) 10	321 ( 13) 12
<b>RACE/ETHNICITY</b>									
White	12 ( 21) 7	123 ( 36) 12	31 ( 17) 7	286 ( 32) 105	55 ( 54) 13	8 ( 3) 32	27 ( 15) 11	109 ( 30) 21	651 ( 27) 21
Black	28 ( 50) 56	44 ( 13) 58	30 ( 17) 36	174 ( 20) 243	19 ( 19) 45	170 ( 54) 51	15 ( 8) 40	113 ( 31) 46	594 ( 25) 63
Hispanic/Latino	14 ( 25) 11	137 ( 41) 16	88 ( 49) 10	359 ( 41) 51	22 ( 22) 20	130 ( 41) 19	133 ( 74) 14	111 ( 31) 18	996 ( 41) 20
Other (5)	<5 ( -) -	19 ( 6) 8	26 ( 15) 6	47 ( 5) 22	<5 ( -) -	<5 ( -) -	<5 ( -) -	20 ( 6) 8	123 ( 5) 9
<b>TRANSMISSION CATEGORY (6)</b>									
MSM	32 ( 56)	269 ( 80)	140 ( 78)	745 ( 85)	87 ( 85)	229 ( 73)	139 ( 77)	292 ( 81)	1935 ( 80)
IDU	7 ( 13)	16 ( 5)	14 ( 8)	25 ( 3)	<5 ( -)	17 ( 5)	12 ( 7)	14 ( 4)	109 ( 5)
MSM/IDU	5 ( 9)	13 ( 4)	5 ( 3)	44 ( 5)	6 ( 6)	7 ( 2)	5 ( 3)	12 ( 3)	97 ( 4)
Heterosexual contact	11 ( 20)	35 ( 10)	20 ( 11)	65 ( 7)	5 ( 5)	62 ( 20)	22 ( 12)	40 ( 11)	262 ( 11)
Perinatal exposure	<5 ( -)	<5 ( -)	<5 ( -)	<5 ( -)	<5 ( -)	<5 ( -)	<5 ( -)	<5 ( -)	<5 ( -)
Other/Undetermined	<5 ( -)	<5 ( -)	<5 ( -)	<5 ( -)	<5 ( -)	<5 ( -)	<5 ( -)	<5 ( -)	7 ( 0)
<b>Total [% of total] (7)</b>	<b>56 [ 2] 16</b>	<b>337 [ 14] 15</b>	<b>178 [ 7] 9</b>	<b>881 [ 37] 70</b>	<b>102 [ 4] 16</b>	<b>316 [ 13] 30</b>	<b>180 [ 7] 13</b>	<b>359 [ 15] 22</b>	<b>2413 [100] 23</b>

1. Data are provisional due to reporting delay.
2. Rates based on observations fewer than 12 may not be reliable (see Technical Notes).
3. Total includes persons with no information on SPA.
4. Transgender is not presented here due to small numbers.
5. Other includes Asian, Pacific Islander, American Indian and Alaskan Native.
6. Persons without an identified risk factor are assigned a risk factor using multiple imputation (MI) methods (see Technical Notes). Rate for transmission category is not calculated, because of the lack of denominator data.
7. Total includes persons who have multiple races/ethnicities or have missing information on race/ethnicity.

TABLE 11. NEW HIV/AIDS DIAGNOSES IN 2009 (1) AND RATE PER 100,000 (1,2) BY GENDER, AGE, RACE/ETHNICITY, TRANSMISSION CATEGORY, AND SERVICE PLANNING AREA (SPA) REPORTED BY DECEMBER 31, 2011, LOS ANGELES COUNTY

Service Planning Area	Antelope Valley No. (%) Rate	San Fernando No. (%) Rate	San Gabriel No. (%) Rate	Metro No. (%) Rate	West No. (%) Rate	South No. (%) Rate	East No. (%) Rate	South Bay/LB No. (%) Rate	Total (3) No. (%) Rate
<b>GENDER (4)</b>									
Male	37 ( 77) 20	247 ( 86) 22	154 ( 92) 17	729 ( 94) 114	75 ( 91) 24	203 ( 73) 39	130 ( 84) 19	295 ( 86) 37	1874 ( 88) 36
Female	11 ( 23) 6	40 ( 14) 4	13 ( 8) 1	46 ( 6) 8	7 ( 9) 2	75 ( 27) 14	24 ( 16) 3	47 ( 14) 6	263 ( 12) 5
<b>AGE GROUP</b>									
<30	11 ( 23) 6	95 ( 33) 10	58 ( 35) 7	251 ( 32) 52	19 ( 23) 9	122 ( 44) 22	59 ( 38) 9	109 ( 32) 16	726 ( 34) 16
30-39	14 ( 29) 36	80 ( 28) 26	43 ( 26) 17	246 ( 32) 108	28 ( 34) 24	69 ( 25) 45	47 ( 31) 24	105 ( 31) 46	633 ( 30) 41
40-49	14 ( 29) 28	71 ( 25) 20	36 ( 22) 13	194 ( 25) 93	21 ( 26) 18	53 ( 19) 41	33 ( 21) 18	76 ( 22) 30	498 ( 23) 32
50+	9 ( 19) 10	41 ( 14) 6	30 ( 18) 5	84 ( 11) 26	14 ( 17) 6	34 ( 12) 16	15 ( 10) 4	52 ( 15) 11	280 ( 13) 10
<b>RACE/ETHNICITY</b>									
White	15 ( 31) 10	82 ( 29) 8	37 ( 22) 8	223 ( 29) 80	48 ( 59) 11	6 ( 2) 23	20 ( 13) 9	95 ( 28) 19	527 ( 25) 17
Black	10 ( 21) 19	44 ( 15) 57	21 ( 13) 26	152 ( 20) 210	15 ( 18) 35	144 ( 52) 43	13 ( 8) 35	107 ( 31) 43	508 ( 24) 54
Hispanic/Latino	20 ( 42) 14	144 ( 50) 17	88 ( 53) 10	365 ( 47) 53	13 ( 16) 12	121 ( 44) 18	117 ( 76) 12	120 ( 35) 20	988 ( 46) 20
Other (5)	<5 ( -) -	11 ( 4) 5	21 ( 13) 4	34 ( 4) 16	<5 ( -) -	5 ( 2) 24	<5 ( -) -	18 ( 5) 7	97 ( 5) 7
<b>TRANSMISSION CATEGORY (6)</b>									
MSM	32 ( 67)	230 ( 80)	142 ( 85)	680 ( 88)	73 ( 89)	185 ( 67)	121 ( 79)	272 ( 80)	1739 ( 81)
IDU	5 ( 10)	9 ( 3)	<5 ( -)	14 ( 2)	<5 ( -)	15 ( 5)	6 ( 4)	19 ( 5)	74 ( 3)
MSM/IDU	<5 ( -)	8 ( 3)	7 ( 4)	34 ( 4)	<5 ( -)	9 ( 3)	<5 ( -)	8 ( 2)	72 ( 3)
Heterosexual contact	10 ( 20)	40 ( 14)	14 ( 8)	47 ( 6)	7 ( 8)	69 ( 25)	23 ( 15)	43 ( 13)	252 ( 12)
Other/Undetermined	<5 ( -)	<5 ( -)	<5 ( -)	<5 ( -)	<5 ( -)	<5 ( -)	<5 ( -)	<5 ( -)	<5 ( -)
<b>Total [% of total] (7)</b>	<b>48 [ 2] 13</b>	<b>287 [ 13] 13</b>	<b>167 [ 8] 9</b>	<b>775 [ 36] 62</b>	<b>82 [ 4] 13</b>	<b>278 [ 13] 26</b>	<b>154 [ 7] 11</b>	<b>342 [ 16] 21</b>	<b>2137 [100] 21</b>

1. Data are provisional due to reporting delay.
2. Rates based on observations fewer than 12 may not be reliable (see Technical Notes).
3. Total includes persons with no information on SPA.
4. Transgender is not presented here due to small numbers.
5. Other includes Asian, Pacific Islander, American Indian and Alaskan Native.
6. Persons without an identified risk factor are assigned a risk factor using multiple imputation (MI) methods (see Technical Notes). Rate for transmission category is Not calculated, because of the lack of denominator data.
7. Total includes persons who have multiple races/ethnicities or have missing information on race/ethnicity.

TABLE 12. NEW HIV/AIDS DIAGNOSES IN 2010 (1) AND RATE PER 100,000 (1,2) BY GENDER, AGE, RACE/ETHNICITY, TRANSMISSION CATEGORY, AND SERVICE PLANNING AREA (SPA) REPORTED BY DECEMBER 31, 2011, LOS ANGELES COUNTY

Service Planning Area	Antelope Valley No. (%) Rate	San Fernando No. (%) Rate	San Gabriel No. (%) Rate	Metro No. (%) Rate	West No. (%) Rate	South No. (%) Rate	East No. (%) Rate	South Bay/LB No. (%) Rate	Total (3) No. (%) Rate
<b>GENDER (4)</b>									
Male	29 ( 71) 16	203 ( 88) 18	125 ( 91) 13	722 ( 93) 111	97 ( 90) 30	211 ( 82) 40	138 ( 83) 20	303 ( 90) 38	1835 ( 89) 35
Female	12 ( 29) 7	28 ( 12) 3	12 ( 9) 1	51 ( 7) 8	11 ( 10) 3	47 ( 18) 9	29 ( 17) 4	35 ( 10) 4	227 ( 11) 4
<b>AGE GROUP</b>									
<30	17 ( 41) 9	92 ( 40) 10	50 ( 36) 6	237 ( 31) 49	37 ( 34) 18	109 ( 42) 19	65 ( 39) 10	120 ( 36) 17	730 ( 35) 16
30-39	6 ( 15) 14	62 ( 27) 19	38 ( 28) 14	246 ( 32) 106	30 ( 28) 25	69 ( 27) 43	48 ( 29) 23	84 ( 25) 36	585 ( 28) 37
40-49	12 ( 29) 25	52 ( 23) 16	31 ( 23) 12	202 ( 26) 96	26 ( 24) 23	48 ( 19) 37	35 ( 21) 19	77 ( 23) 32	486 ( 24) 32
50+	6 ( 15) 7	25 ( 11) 4	18 ( 13) 3	88 ( 11) 27	15 ( 14) 7	32 ( 12) 15	19 ( 11) 6	57 ( 17) 13	261 ( 13) 9
<b>RACE/ETHNICITY</b>									
White	8 ( 20) 5	69 ( 30) 7	23 ( 17) 5	262 ( 34) 93	46 ( 43) 11	8 ( 3) 29	18 ( 11) 8	86 ( 25) 17	521 ( 25) 17
Black	17 ( 41) 33	48 ( 21) 61	16 ( 12) 20	138 ( 18) 191	20 ( 19) 45	136 ( 53) 41	14 ( 8) 38	109 ( 32) 44	498 ( 24) 53
Hispanic/Latino	15 ( 37) 10	103 ( 45) 12	84 ( 61) 10	328 ( 42) 47	30 ( 28) 27	107 ( 41) 16	129 ( 77) 13	117 ( 35) 19	915 ( 44) 18
Other (5)	<5 ( - ) -	8 ( 3) 3	14 ( 10) 3	33 ( 4) 16	9 ( 8) 10	<5 ( - ) -	<5 ( - ) -	17 ( 5) 7	88 ( 4) 6
<b>TRANSMISSION CATEGORY (6)</b>									
MSM	24 ( 59)	188 ( 81)	115 ( 84)	674 ( 87)	93 ( 86)	194 ( 75)	123 ( 73)	273 ( 81)	1687 ( 82)
IDU	<5 ( - )	9 ( 4)	6 ( 4)	18 ( 2)	<5 ( - )	18 ( 7)	7 ( 4)	14 ( 4)	79 ( 4)
MSM/IDU	<5 ( - )	7 ( 3)	<5 ( - )	27 ( 4)	<5 ( - )	5 ( 2)	8 ( 5)	16 ( 5)	70 ( 3)
Heterosexual contact	10 ( 24)	26 ( 11)	12 ( 9)	52 ( 7)	9 ( 8)	41 ( 16)	29 ( 17)	34 ( 10)	213 ( 10)
Perinatal exposure	<5 ( - )	<5 ( - )	<5 ( - )	<5 ( - )	<5 ( - )	<5 ( - )	<5 ( - )	<5 ( - )	6 ( <1)
Other/Undetermined	<5 ( - )	<5 ( - )	<5 ( - )	<5 ( - )	<5 ( - )	<5 ( - )	<5 ( - )	<5 ( - )	8 ( <1)
<b>Total [% of total] (7)</b>	<b>41 [ 2] 11</b>	<b>231 [ 11] 10</b>	<b>137 [ 7] 7</b>	<b>773 [ 37] 61</b>	<b>108 [ 5] 16</b>	<b>258 [ 13] 24</b>	<b>167 [ 8] 12</b>	<b>338 [ 16] 21</b>	<b>2062 [100] 20</b>

1. Data are provisional due to reporting delay.
2. Rates based on observations fewer than 12 may not be reliable (see Technical Notes).
3. Total includes persons with no information on SPA.
4. Transgender is not presented here due to small numbers.
5. Other includes Asian, Pacific Islander, American Indian and Alaskan Native.
6. Persons without an identified risk factor are assigned a risk factor using multiple imputation (MI) methods (see Technical Notes). Rate for transmission category is not calculated, because of the lack of denominator data.
7. Total includes persons who have multiple races/ethnicities or have missing information on race/ethnicity.

TABLE 13. PERSONS LIVING WITH HIV/AIDS (1) AS OF DECEMBER 31, 2011 BY RACE/ETHNICITY, GENDER, AGE, TRANSMISSION CATEGORY, AND SERVICE PLANNING AREA (SPA)  
 REPORTED BY DECEMBER 31, 2011, LOS ANGELES COUNTY

	White			Black			Hispanic/Latino			Other (2)			Total (3)		
	Male	Female	All	Male	Female	All	Male	Female	All	Male	Female	All	Male	Female	All
	No. (%)	No. (%)	No. (%)	No. (%)	No. (%)	No. (%)	No. (%)	No. (%)	No. (%)	No. (%)	No. (%)	No. (%)	No. (%)	No. (%)	No. (%)
<b>AGE GROUP (4)</b>															
<13	<5 ( -)	<5 ( -)	<5 ( -)	8 (<1)	6(<1)	14(<1)	9 (<1)	11(<1)	20(<1)	<5 ( -)	<5 ( -)	<5 ( -)	22(<1)	20(<1)	42(<1)
13-19	15 (<1)	<5 ( -)	18(<1)	40 ( 1)	26( 1)	66( 1)	64 (<1)	38( 2)	102( 1)	<5 ( -)	<5 ( -)	<5 ( -)	121(<1)	68( 1)	189(<1)
20-29	531 ( 4)	33( 4)	564( 4)	875 (12)	154( 8)	1029(11)	1439 ( 9)	241(11)	1680(10)	118 ( 8)	9( 5)	127( 8)	3022( 8)	443( 9)	3465( 8)
30-39	1552 (11)	110(14)	1662(11)	1140 (16)	368(20)	1508(17)	3790 (25)	543(24)	4333(25)	357 (25)	45(26)	402(25)	6913(18)	1080(21)	7993(18)
40-49	5227 (37)	289(38)	5516(37)	2420 (33)	612(33)	3032(33)	5869 (38)	711(32)	6580(37)	520 (36)	55(32)	575(36)	14238(37)	1683(33)	15921(36)
50-59	4809 (34)	207(27)	5016(34)	2081 (29)	490(27)	2571(28)	3220 (21)	464(21)	3684(21)	320 (22)	38(22)	358(22)	10592(27)	1213(24)	11805(27)
60+	2036 (14)	124(16)	2160(14)	730 (10)	178(10)	908(10)	1018 ( 7)	223(10)	1241( 7)	125 ( 9)	25(14)	150( 9)	3966(10)	555(11)	4521(10)
<b>TRANSMISSION CATEGORY (5)</b>															
MSM	12550(89)	- ( -)	12550(84)	5949(82)	- ( -)	5949(65)	13372(87)	- ( -)	13372(76)	1310(91)	- ( -)	1310(81)	33621(86)	- ( -)	33621(77)
IDU	355( 3)	294(38)	649( 4)	391( 5)	448(24)	839( 9)	519( 3)	294(13)	813( 5)	23( 2)	21(12)	44( 3)	1309( 3)	1072(21)	2381( 5)
MSM/IDU	1124( 8)	- ( -)	1124( 8)	643( 9)	- ( -)	643( 7)	882( 6)	- ( -)	882( 5)	70( 5)	- ( -)	70( 4)	2773( 7)	- ( -)	2773( 6)
Hemophi/Transfusion	29(<1)	11( 1)	40(<1)	14(<1)	20( 1)	34(<1)	37(<1)	23( 1)	60(<1)	8( 1)	<5 ( -)	10( 1)	89(<1)	58( 1)	147(<1)
Heterosexual contact	95( 1)	454(59)	549( 4)	248( 3)	1321(72)	1569(17)	533( 3)	1836(82)	2368(13)	28( 2)	150(86)	177(11)	912( 2)	3789(75)	4701(11)
Perinatal exposure	15(<1)	7( 1)	22(<1)	47( 1)	44( 2)	91( 1)	62(<1)	74( 3)	136( 1)	7(<1)	<5 ( -)	8(<1)	132(<1)	127( 3)	259( 1)
Other/Undetermined	<5 ( -)	<5 ( -)	<5 ( -)	<5 ( -)	<5 ( -)	<5 ( -)	5(<1)	<5 ( -)	9(<1)	<5 ( -)	<5 ( -)	<5 ( -)	38(<1)	16(<1)	54(<1)
<b>SERVICE PLANNING AREA</b>															
Antelope Valley[1]	155( 1)	32( 4)	187( 1)	127( 2)	65( 4)	192( 2)	148( 1)	31( 1)	179( 1)	7 (<1)	<5 ( -)	10( 1)	443( 1)	137( 3)	580( 1)
San Fernando[2]	2406(17)	190(25)	2596(17)	612( 8)	157( 9)	769( 8)	2104(14)	295(13)	2399(14)	218 (15)	23(13)	241(15)	5440(14)	671(13)	6111(14)
San Gabriel[3]	616( 4)	76(10)	692( 5)	303( 4)	104( 6)	407( 4)	1387( 9)	230(10)	1617( 9)	224 (16)	34(20)	258(16)	2561( 7)	448( 9)	3009( 7)
Metro[4]	6642(47)	169(22)	6811(46)	2492(34)	330(18)	2822(31)	5878(38)	552(25)	6430(36)	533 (37)	42(24)	575(36)	15799(41)	1105(22)	16904(39)
West[5]	1296( 9)	82(11)	1378( 9)	306( 4)	68( 4)	374( 4)	472( 3)	43( 2)	515( 3)	92 ( 6)	13( 8)	105( 7)	2210( 6)	210( 4)	2420( 6)
South[6]	139( 1)	21( 3)	160( 1)	1785(25)	586(32)	2371(26)	1548(10)	441(20)	1989(11)	25 ( 2)	10( 6)	35( 2)	3524( 9)	1068(21)	4592(10)
East[7]	340( 2)	39( 5)	379( 3)	130( 2)	55( 3)	185( 2)	1825(12)	336(15)	2161(12)	70 ( 5)	13( 8)	83( 5)	2379( 6)	446( 9)	2825( 6)
South Bay/LB[8]	2537(18)	157(20)	2694(18)	1526(21)	468(26)	1994(22)	2028(13)	302(14)	2330(13)	271 (19)	35(20)	306(19)	6433(17)	971(19)	7404(17)
<b>Total (6)</b>	<b>14171[95]</b>	<b>768[ 5]</b>	<b>14939[100]</b>	<b>7294[80]</b>	<b>1834[20]</b>	<b>9128[100]</b>	<b>15409[87]</b>	<b>2231[13]</b>	<b>17640[100]</b>	<b>1446 [89]</b>	<b>173[11]</b>	<b>1619[100]</b>	<b>38874[88]</b>	<b>5062[12]</b>	<b>43936[100]</b>

1. Data are provisional due to reporting delay.
2. Other includes Asian, Pacific Islander, American Indian and Alaskan Native.
3. Total includes persons who have multiple races/ethnicities or have missing information on race/ethnicity.
4. Age as of December 31, 2011.
5. Persons without an identified risk factor are assigned a risk factor using multiple imputation (MI) methods (see Technical Notes).
6. Total includes persons who have missing information on SPA. Percent of total cases that are male and female is shown in this row.

TABLE 14. PERSONS LIVING WITH HIV/AIDS (1) AND RATES PER 100,000 (1,2) AS OF DECEMBER 31, 2011  
 BY SERVICE PLANNING AREA (SPA), GENDER, AGE, RACE/ETHNICITY AND TRANSMISSION CATEGORY  
 REPORTED BY DECEMBER 31, 2011, LOS ANGELES COUNTY

Service Planning Area	Antelope Valley No. (%) Rate	San Fernando No. (%) Rate	San Gabriel No. (%) Rate	Metro No. (%) Rate	West No. (%) Rate	South No. (%) Rate	East No. (%) Rate	South Bay/LB No. (%) Rate	Total (3) No. (%) Rate
<b>GENDER</b>									
Male	441 (76) 236	5375 (88) 486	2538 (84) 274	15601 (92) 2409	2202 (91) 687	3473 (76) 662	2360 (84) 345	6376 (86) 801	38449 (88) 741
Female	136 (23) 74	666 (11) 60	447 (15) 46	1100 (7) 180	210 (9) 62	1068 (23) 196	444 (16) 64	968 (13) 117	5045 (11) 96
Transgender (4)	<5 ( -) -	70 (1) <1	24 (1) <1	203 (1) <1	8 (<1) <1	51 (1) <1	21 (1) <1	60 (1) <1	442 (1) <1
<b>AGE GROUP (5)</b>									
<13	<5 ( -) -	<5 ( -) -	7 (<1) 2	9 (<1) 4	<5 ( -) -	11 (<1) 4	<5 ( -) -	7 (<1) 2	42 (<1) 2
13-19	<5 ( -) -	17 (<1) 8	17 (1) 9	39 (<1) 35	7 (<1) 15	49 (1) 38	19 (1) 12	37 (<1) 22	189 (<1) 18
20-29	54 (9) 74	439 (7) 133	248 (8) 83	1069 (6) 673	132 (5) 187	601 (13) 331	306 (11) 135	610 (8) 261	3465 (8) 220
30-39	104 (18) 245	1078 (18) 337	596 (20) 222	2958 (17) 1279	345 (14) 284	970 (21) 600	577 (20) 282	1352 (18) 581	7993 (18) 505
40-49	188 (32) 399	2155 (35) 650	1057 (35) 405	6459 (38) 3085	865 (36) 756	1449 (32) 1124	996 (35) 548	2720 (37) 1128	15921 (36) 1051
50-59	163 (28) 356	1697 (28) 582	775 (26) 326	4699 (28) 3216	743 (31) 818	1078 (23) 1116	656 (23) 444	1967 (27) 988	11805 (27) 940
60+	66 (11) 146	721 (12) 205	309 (10) 99	1671 (10) 899	326 (13) 254	434 (9) 383	270 (10) 142	711 (10) 281	4521 (10) 286
<b>RACE/ETHNICITY</b>									
White	187 (32) 122	2596 (42) 253	692 (23) 152	6811 (40) 2429	1378 (57) 331	160 (3) 585	379 (13) 166	2694 (36) 545	14939 (34) 485
Black	192 (33) 369	769 (13) 980	407 (14) 508	2822 (17) 3914	374 (15) 835	2371 (52) 714	185 (7) 503	1994 (27) 803	9128 (21) 966
Hispanic/Latino	179 (31) 121	2399 (39) 277	1617 (54) 187	6430 (38) 927	515 (21) 455	1989 (43) 289	2161 (76) 219	2330 (31) 374	17640 (40) 354
Asian/PI	8 (1) 53	217 (4) 90	248 (8) 51	490 (3) 235	89 (4) 105	18 (<1) 93	71 (3) 58	282 (4) 113	1427 (3) 100
AI/AN	<5 ( -) -	24 (<1) 407	10 (<1) 224	85 (1) 2422	16 (1) 1128	17 (<1) 916	12 (<1) 284	24 (<1) 553	192 (<1) 690
<b>TRANSMISSION CATEGORY (4,6)</b>									
MSM	332 (57)	4704 (77)	2170 (72)	13998 (83)	1973 (82)	2914 (63)	2039 (72)	5427 (73)	33621 (77)
IDU	73 (13)	313 (5)	220 (7)	604 (4)	108 (4)	385 (8)	180 (6)	489 (7)	2381 (5)
MSM/IDU	47 (8)	379 (6)	161 (5)	1164 (7)	131 (5)	223 (5)	145 (5)	514 (7)	2773 (6)
Hemophi/Transfusion	<5 ( -)	29 (<1)	18 (1)	28 (<1)	10 (<1)	18 (<1)	18 (1)	25 (<1)	147 (<1)
Heterosexual contact	118 (20)	656 (11)	411 (14)	1030 (6)	184 (8)	982 (21)	421 (15)	899 (12)	4701 (11)
Perinatal exposure	6 (1)	24 (<1)	25 (1)	59 (<1)	13 (1)	66 (1)	19 (1)	47 (1)	259 (1)
Other/Undetermined	<5 ( -)	6 (<1)	<5 ( -)	21 (<1)	<5 ( -)	5 (<1)	<5 ( -)	<5 ( -)	54 (<1)
Total [% of total] (7)	580 [ 1]157	6111 [ 14]276	3009 [ 7]159	16904 [ 38]1343	2420 [ 6]367	4592 [ 10]429	2825 [ 6]205	7404 [ 17]457	43936 [100]420

1. Data are provisional due to reporting delay.
2. Rates are based on year 2010 population estimates. Rates that are based on observations fewer than 12 may not be reliable (see Technical Notes).
3. Total includes persons with no information on SPA.
4. Rates for transgender and transmission category are not calculated, because of the lack of denominator data.
5. Age as of December 31, 2011.
6. Persons without an identified risk factor are assigned a risk factor using multiple imputation (MI) methods (see Technical Notes).
7. Total includes persons who have multiple races/ethnicities or have missing information on race/ethnicity.



TABLE 15. CUMULATIVE HIV/AIDS DIAGNOSES (1) BY GENDER, AGE, RACE/ETHNICITY, TRANSMISSION CATEGORY, AND SERVICE PLANNING AREA (SPA) REPORTED BY DECEMBER 31, 2011, LOS ANGELES COUNTY

Service Planning Area	Antelope Valley No. (%)	San Fernando No. (%)	San Gabriel No. (%)	Metro No. (%)	West No. (%)	South No. (%)	East No. (%)	South Bay/LB No. (%)	Total (2) No. (%)
<b>GENDER</b>									
Male	700 ( 79)	10061 ( 90)	4868 ( 87)	28549 ( 94)	4140 ( 93)	6351 ( 79)	4075 ( 86)	10840 ( 88)	69792 ( 90)
Female	186 ( 21)	983 ( 9)	715 ( 13)	1647 ( 5)	321 ( 7)	1634 ( 20)	641 ( 14)	1411 ( 11)	7548 ( 10)
Transgender	<5 ( - )	95 ( 1)	27 ( <1)	254 ( 1)	9 ( <1)	64 ( 1)	24 ( 1)	67 ( 1)	546 ( 1)
<b>AGE AT DIAGNOSIS</b>									
<13	14 ( 2)	64 ( 1)	62 ( 1)	114 ( <1)	23 ( 1)	106 ( 1)	46 ( 1)	96 ( 1)	526 ( 1)
13-19	22 ( 2)	219 ( 2)	100 ( 2)	517 ( 2)	52 ( 1)	274 ( 3)	116 ( 2)	266 ( 2)	1570 ( 2)
20-29	211 ( 24)	2620 ( 24)	1420 ( 25)	7493 ( 25)	980 ( 22)	2269 ( 28)	1365 ( 29)	3234 ( 26)	19661 ( 25)
30-39	333 ( 37)	4325 ( 39)	2113 ( 38)	12550 ( 41)	1878 ( 42)	2775 ( 34)	1761 ( 37)	4874 ( 40)	30697 ( 39)
40-49	198 ( 22)	2634 ( 24)	1255 ( 22)	6929 ( 23)	1025 ( 23)	1712 ( 21)	948 ( 20)	2626 ( 21)	17371 ( 22)
50-59	78 ( 9)	969 ( 9)	470 ( 8)	2242 ( 7)	358 ( 8)	680 ( 8)	362 ( 8)	958 ( 8)	6128 ( 8)
60+	33 ( 4)	308 ( 3)	190 ( 3)	605 ( 2)	154 ( 3)	233 ( 3)	142 ( 3)	264 ( 2)	1933 ( 2)
<b>RACE/ETHNICITY</b>									
White	363 ( 41)	5961 ( 54)	1729 ( 31)	14257 ( 47)	2781 ( 62)	327 ( 4)	864 ( 18)	5315 ( 43)	31718 ( 41)
Black	260 ( 29)	1166 ( 10)	842 ( 15)	4872 ( 16)	647 ( 14)	4809 ( 60)	296 ( 6)	3142 ( 26)	16072 ( 21)
Hispanic/Latino	239 ( 27)	3530 ( 32)	2630 ( 47)	9978 ( 33)	825 ( 18)	2767 ( 34)	3430 ( 72)	3285 ( 27)	26728 ( 34)
Asian/PI	11 ( 1)	289 ( 3)	328 ( 6)	719 ( 2)	116 ( 3)	31 ( <1)	102 ( 2)	384 ( 3)	1985 ( 3)
AI/AN	<5 ( - )	41 ( <1)	21 ( <1)	147 ( <1)	24 ( 1)	28 ( <1)	22 ( <1)	50 ( <1)	338 ( <1)
<b>TRANSMISSION CATEGORY (3)</b>									
MSM	492 ( 55)	8647 ( 78)	4003 ( 71)	25089 ( 82)	3637 ( 81)	5019 ( 62)	3372 ( 71)	8941 ( 73)	59354 ( 76)
IDU	141 ( 16)	711 ( 6)	518 ( 9)	1377 ( 5)	233 ( 5)	947 ( 12)	396 ( 8)	1038 ( 8)	5381 ( 7)
MSM/IDU	71 ( 8)	684 ( 6)	338 ( 6)	2309 ( 8)	260 ( 6)	491 ( 6)	274 ( 6)	919 ( 7)	5372 ( 7)
Hemophi/Transfusion	17 ( 2)	142 ( 1)	94 ( 2)	125 ( <1)	59 ( 1)	86 ( 1)	87 ( 2)	130 ( 1)	744 ( 1)
Heterosexual contact	157 ( 18)	908 ( 8)	606 ( 11)	1438 ( 5)	262 ( 6)	1415 ( 18)	580 ( 12)	1219 ( 10)	6591 ( 8)
Perinatal exposure	7 ( 1)	39 ( <1)	43 ( 1)	90 ( <1)	18 ( <1)	88 ( 1)	30 ( 1)	67 ( 1)	382 ( <1)
Other/Undetermined	<5 ( - )	8 ( <1)	8 ( <1)	22 ( <1)	<5 ( - )	<5 ( - )	<5 ( - )	5 ( <1)	63 ( <1)
<b>Total [% of total] (4)</b>	<b>889 [ 1]</b>	<b>11139 [ 14]</b>	<b>5610 [ 7]</b>	<b>30450 [ 39]</b>	<b>4470 [ 6]</b>	<b>8049 [ 10]</b>	<b>4740 [ 6]</b>	<b>12318 [ 16]</b>	<b>77886 [100]</b>

1. Data are provisional due to reporting delay.
2. Total includes persons with no information on SPA.
3. Persons without an identified risk factor are assigned a risk factor using multiple imputation (MI) methods (See Technical Notes).
4. Total includes persons who have multiple races/ethnicities or have missing information on race/ethnicity.

TABLE 16. PERSONS LIVING WITH NON-AIDS HIV (1) AND RATE PER 100,000 (2) AS OF DECEMBER 31, 2011  
 BY SERVICE PLANNING AREA (SPA), GENDER, AGE, RACE/ETHNICITY AND TRANSMISSION CATEGORY, LOS ANGELES COUNTY

Service Planning Area	Antelope Valley		San Fernando		San Gabriel		Metro		West		South		East		South Bay/LB		Total (3)		
	No.	(%) Rate	No.	(%) Rate	No.	(%) Rate	No.	(%) Rate	No.	(%) Rate	No.	(%) Rate	No.	(%) Rate	No.	(%) Rate	No.	(%) Rate	
<b>GENDER</b>																			
Male	161	(68) 86	2119	(87) 192	950	(84) 103	6401	(92) 988	914	(91) 285	1270	(71) 242	827	(80) 121	2067	(84) 260	14732	(86) 284	
Female	74	(31) 40	297	(12) 27	174	(15) 18	448	( 6) 73	87	( 9) 26	490	(28) 90	197	(19) 28	375	(15) 45	2144	(13) 41	
Transgender (4)	<5	( -) -	28	( 1) -	7	( 1) -	91	( 1) -	<5	( -) -	18	( 1) -	9	( 1) -	21	( 1) -	176	( 1) -	
<b>AGE GROUP (5)</b>																			
<13	<5	( -) -	<5	( -) -	6	( 1) 2	6	(<1) 3	<5	( -) -	10	( 1) 4	<5	( -) -	<5	( -) -	31	(<1) 2	
13-19	<5	( -) -	12	(<1) 6	12	( 1) 6	25	(<1) 22	6	( 1) 13	31	( 2) 24	12	( 1) 8	25	( 1) 15	127	( 1) 12	
20-29	43	(18) 59	306	(13) 93	172	(15) 57	809	(12) 509	102	(10) 145	418	(24) 230	218	(21) 96	417	(17) 179	2490	(15) 158	
30-39	50	(21) 118	597	(24) 186	298	(26) 111	1741	(25) 753	199	(20) 164	477	(27) 295	273	(26) 133	583	(24) 251	4223	(25) 267	
40-49	71	(30) 151	813	(33) 245	363	(32) 139	2502	(36) 1195	356	(36) 311	453	(25) 351	312	(30) 172	806	(33) 334	5685	(33) 375	
50-59	50	(21) 109	508	(21) 174	204	(18) 86	1446	(21) 990	238	(24) 262	280	(16) 290	158	(15) 107	461	(19) 232	3350	(20) 267	
60+	17	( 7) 38	206	( 8) 58	76	( 7) 24	411	( 6) 221	99	(10) 77	109	( 6) 96	59	( 6) 31	168	( 7) 66	1146	( 7) 72	
<b>RACE/ETHNICITY</b>																			
White	67	(28) 44	1062	(43) 104	289	(26) 63	2953	(43) 1053	582	(58) 140	64	( 4) 234	149	(14) 65	832	(34) 168	6005	(35) 195	
Black	92	(39) 177	337	(14) 430	131	(12) 164	1208	(17) 1676	161	(16) 360	947	(53) 285	81	( 8) 220	745	(30) 300	3704	(22) 392	
Hispanic/Latino	67	(28) 45	896	(37) 103	579	(51) 67	2395	(35) 345	189	(19) 167	732	(41) 106	760	(74) 77	744	(30) 119	6370	(37) 128	
Asian/PI	<5	( -) -	97	( 4) 40	107	( 9) 22	220	( 3) 106	46	( 5) 54	10	( 1) 52	30	( 3) 24	101	( 4) 40	613	( 4) 43	
AI/AN	<5	( -) -	8	(<1) 136	<5	( -) -	38	( 1) 1083	5	(<1) 353	10	( 1) 539	5	(<1) 118	8	(<1) 184	78	(<1) 280	
<b>TRANSMISSION CATEGORY (4,6)</b>																			
MSM	134	(57)	1950	(80)	853	(75)	5987	(86)	848	(85)	1139	(64)	764	(74)	1845	(75)	13536	(79)	
IDU	27	(11)	78	( 3)	56	( 5)	170	( 2)	27	( 3)	118	( 7)	48	( 5)	136	( 6)	661	( 4)	
MSM/IDU	13	( 5)	128	( 5)	51	( 4)	356	( 5)	48	( 5)	59	( 3)	38	( 4)	111	( 5)	802	( 5)	
Hemophi/Transfusion	<5	( -)	7	(<1)	5	(<1)	5	(<1)	<5	( -)	<5	( -)	<5	( -)	6	(<1)	27	(<1)	
Heterosexual contact	55	(23)	267	(11)	149	(13)	377	( 5)	69	( 7)	427	(24)	171	(17)	338	(14)	1853	(11)	
Perinatal exposure	5	( 2)	10	(<1)	15	( 1)	28	(<1)	9	( 1)	33	( 2)	7	( 1)	26	( 1)	133	( 1)	
Other/Undetermined	<5	( -)	5	(<1)	<5	( -)	18	(<1)	<5	( -)	<5	( -)	<5	( -)	<5	( -)	41	(<1)	
Total [% of total] (7)	236	[ 1] 64	2444	[ 14] 110	1131	[ 7] 60	6940	[ 41] 552	1002	[ 6] 152	1778	[ 10] 166	1033	[ 6] 75	2463	[ 14] 152	17052	[ 100] 163	

1. Based on preliminary number of persons reported with HIV by name from April 17, 2006 to December 31, 2011. Coded HIV case not yet re-ascertained with name are not included. Data are provisional due to reporting delay.
2. Rates are based on year 2010 population estimates. Rates that are based on observations fewer than 12 may not be reliable (see Technical Notes).
3. Total includes persons with no information on SPA.
4. Rates for transgender and transmission category are not calculated, because of the lack of denominator data.
5. Age as of December 31, 2011.
6. Persons without an identified risk factor are assigned a risk factor using multiple imputation (MI) methods (see Technical Notes).
7. Total includes persons who have multiple races/ethnicities or have missing information on race/ethnicity.

TABLE 17. AIDS DIAGNOSES AND RATES PER 100,000 (1) BY GENDER, YEAR OF DIAGNOSIS, AND RACE/ETHNICITY  
 REPORTED BY DECEMBER 31, 2011  
 LOS ANGELES COUNTY

Year of Diagnosis	Race/Ethnicity					Total (2) No. (Rate)
	White No. (Rate)	Black No. (Rate)	Hispanic/Latino No. (Rate)	Asian No. (Rate)	AI/AN No. (Rate)	
<b>MALE</b>						
2002	536 ( 34)	321 ( 73)	693 ( 30)	52 ( 9)	10 ( 71)	1635 ( 33)
2003	561 ( 36)	273 ( 62)	652 ( 28)	53 ( 9)	8 ( 55)	1567 ( 32)
2004	409 ( 26)	246 ( 56)	618 ( 26)	49 ( 8)	5 ( 34)	1348 ( 27)
2005	393 ( 25)	265 ( 61)	558 ( 23)	45 ( 7)	<5 ( - )	1278 ( 25)
2006	397 ( 26)	221 ( 51)	531 ( 22)	43 ( 7)	<5 ( - )	1212 ( 24)
2007	302 ( 20)	206 ( 47)	504 ( 20)	45 ( 7)	8 ( 54)	1077 ( 21)
2008	355 ( 23)	228 ( 52)	516 ( 21)	51 ( 8)	5 ( 36)	1189 ( 23)
2009 (3)	335 ( 21)	242 ( 55)	574 ( 23)	42 ( 6)	5 ( 38)	1214 ( 24)
2010 (3)	230 ( 15)	234 ( 53)	490 ( 19)	40 ( 6)	7 ( 52)	1011 ( 19)
2011 (3)	177 ( 12)	127 ( 29)	297 ( 12)	23 ( 3)	<5 ( - )	634 ( 12)
<b>Cumulative</b>						
Male subtotal	24045	9977	17906	1228	211	54040
<b>FEMALE</b>						
2002	39 ( 2)	80 ( 16)	104 ( 5)	8 ( 1)	<5 ( - )	234 ( 5)
2003	27 ( 2)	77 ( 15)	105 ( 5)	5 ( 1)	<5 ( - )	216 ( 4)
2004	36 ( 2)	74 ( 15)	67 ( 3)	6 ( 1)	<5 ( - )	186 ( 4)
2005	27 ( 2)	77 ( 15)	70 ( 3)	6 ( 1)	<5 ( - )	184 ( 4)
2006	17 ( 1)	65 ( 13)	87 ( 4)	5 ( 1)	<5 ( - )	179 ( 3)
2007	22 ( 1)	60 ( 12)	65 ( 3)	<5 ( - )	<5 ( - )	156 ( 3)
2008	24 ( 2)	76 ( 15)	66 ( 3)	7 ( 1)	<5 ( - )	175 ( 3)
2009 (3)	23 ( 1)	62 ( 12)	74 ( 3)	5 ( 1)	<5 ( - )	166 ( 3)
2010 (3)	15 ( 1)	62 ( 12)	58 ( 2)	<5 ( - )	<5 ( - )	138 ( 3)
2011 (3)	12 ( 1)	34 ( 7)	30 ( 1)	<5 ( - )	<5 ( - )	79 ( 1)
<b>Cumulative</b>						
Female subtotal	1010	1952	2052	115	35	5210
<b>BOTH</b>						
2002	575 ( 18)	401 ( 42)	797 ( 18)	60 ( 5)	12 ( 41)	1869 ( 19)
2003	588 ( 19)	350 ( 37)	757 ( 16)	58 ( 4)	10 ( 34)	1783 ( 18)
2004	445 ( 14)	320 ( 34)	685 ( 15)	55 ( 4)	6 ( 20)	1534 ( 15)
2005	420 ( 13)	342 ( 36)	628 ( 13)	51 ( 4)	5 ( 16)	1462 ( 14)
2006	414 ( 13)	286 ( 31)	618 ( 13)	48 ( 4)	6 ( 19)	1391 ( 14)
2007	324 ( 10)	266 ( 28)	569 ( 12)	49 ( 4)	10 ( 33)	1233 ( 12)
2008	379 ( 12)	304 ( 32)	582 ( 12)	58 ( 4)	5 ( 17)	1364 ( 13)
2009 (3)	358 ( 11)	304 ( 32)	648 ( 13)	47 ( 3)	6 ( 22)	1380 ( 13)
2010 (3)	245 ( 8)	296 ( 31)	548 ( 11)	40 ( 3)	7 ( 25)	1149 ( 11)
2011 (3)	189 ( 6)	161 ( 17)	327 ( 7)	24 ( 2)	<5 ( - )	713 ( 7)
<b>Cumulative Total</b>						
1982-2011	25055	11929	19958	1343	246	59250

1. Rates are based on population estimates for 2002-2010. Rates for 2011 are calculated using population estimates for 2010. Rates based on observations fewer than 12 may not be reliable (see Technical Notes).
2. Total includes persons who have multiple races/ethnicities or have missing information on race/ethnicity.
3. Data are provisional due to reporting delay.

TABLE 18. AIDS DIAGNOSES AMONG ADULTS/ADOLESCENTS AND RATES PER 100,000 (1)  
 BY GENDER, YEAR OF DIAGNOSIS, AND RACE/ETHNICITY  
 REPORTED BY DECEMBER 31, 2011  
 LOS ANGELES COUNTY

Year of Diagnosis	Race/Ethnicity					Total (2) No. (Rate)
	White No. (Rate)	Black No. (Rate)	Hispanic/Latino No. (Rate)	Asian No. (Rate)	AI/AN No. (Rate)	
<b>MALE</b>						
2002	536 ( 40)	319 ( 93)	693 ( 42)	52 ( 10)	10 ( 86)	1633 ( 42)
2003	561 ( 42)	273 ( 79)	652 ( 38)	53 ( 10)	8 ( 67)	1567 ( 40)
2004	409 ( 30)	245 ( 71)	618 ( 36)	48 ( 9)	5 ( 40)	1346 ( 34)
2005	393 ( 29)	265 ( 77)	558 ( 31)	45 ( 8)	<5 ( -)	1278 ( 32)
2006	397 ( 30)	221 ( 64)	531 ( 29)	43 ( 8)	<5 ( -)	1212 ( 30)
2007	302 ( 22)	206 ( 59)	504 ( 27)	45 ( 8)	8 ( 62)	1077 ( 26)
2008	355 ( 26)	228 ( 64)	516 ( 28)	51 ( 9)	5 ( 41)	1189 ( 29)
2009 (3)	335 ( 24)	242 ( 68)	574 ( 30)	42 ( 7)	5 ( 43)	1214 ( 29)
2010 (3)	230 ( 17)	234 ( 65)	490 ( 26)	39 ( 7)	7 ( 60)	1010 ( 24)
2011 (3)	177 ( 13)	126 ( 35)	297 ( 15)	23 ( 4)	<5 ( -)	633 ( 15)
<b>Cumulative</b>						
Male subtotal	24020	9926	17846	1224	210	53899
<b>FEMALE</b>						
2002	39 ( 3)	80 ( 19)	103 ( 6)	8 ( 1)	<5 ( -)	233 ( 6)
2003	26 ( 2)	77 ( 19)	105 ( 6)	5 ( 1)	<5 ( -)	215 ( 5)
2004	36 ( 3)	74 ( 18)	67 ( 4)	6 ( 1)	<5 ( -)	186 ( 4)
2005	26 ( 2)	77 ( 19)	69 ( 4)	6 ( 1)	<5 ( -)	182 ( 4)
2006	17 ( 1)	65 ( 16)	87 ( 5)	5 ( 1)	<5 ( -)	179 ( 4)
2007	22 ( 2)	59 ( 14)	65 ( 4)	<5 ( -)	<5 ( -)	155 ( 4)
2008	24 ( 2)	75 ( 18)	66 ( 4)	7 ( 1)	<5 ( -)	174 ( 4)
2009 (3)	23 ( 2)	62 ( 15)	74 ( 4)	5 ( 1)	<5 ( -)	166 ( 4)
2010 (3)	15 ( 1)	62 ( 15)	58 ( 3)	<5 ( -)	<5 ( -)	138 ( 3)
2011 (3)	12 ( 1)	34 ( 8)	30 ( 2)	<5 ( -)	<5 ( -)	79 ( 2)
<b>Cumulative</b>						
Female subtotal	990	1914	1997	112	35	5094
<b>BOTH</b>						
2002	575 ( 21)	399 ( 53)	796 ( 24)	60 ( 6)	12 ( 50)	1866 ( 24)
2003	587 ( 22)	350 ( 46)	757 ( 22)	58 ( 5)	10 ( 40)	1782 ( 22)
2004	445 ( 16)	319 ( 42)	685 ( 20)	54 ( 5)	6 ( 23)	1532 ( 19)
2005	419 ( 15)	342 ( 45)	627 ( 18)	51 ( 4)	5 ( 19)	1460 ( 18)
2006	414 ( 15)	286 ( 38)	618 ( 17)	48 ( 4)	6 ( 22)	1391 ( 17)
2007	324 ( 12)	265 ( 34)	569 ( 16)	49 ( 4)	10 ( 38)	1232 ( 15)
2008	379 ( 14)	303 ( 39)	582 ( 16)	58 ( 5)	5 ( 20)	1363 ( 16)
2009 (3)	358 ( 13)	304 ( 39)	648 ( 17)	47 ( 4)	6 ( 25)	1380 ( 16)
2010 (3)	245 ( 9)	296 ( 38)	548 ( 14)	39 ( 3)	7 ( 29)	1148 ( 13)
2011 (3)	189 ( 7)	160 ( 20)	327 ( 9)	24 ( 2)	<5 ( -)	712 ( 8)
<b>Cumulative Total</b>						
1982-2011	25010	11840	19843	1336	245	58993

1. Rates are based on population estimates for 2002-2010. Rates for 2011 are calculated using population estimates for 2010. Rates based on observations fewer than 12 may not be reliable (see Technical Notes).
2. Total includes persons who have multiple races/ethnicities or have missing information on race/ethnicity.
3. Data are provisional due to reporting delay.

TABLE 19. AIDS DIAGNOSES BY GENDER, TRANSMISSION CATEGORY, AND YEAR OF DIAGNOSIS, REPORTED BY DECEMBER 31, 2011, LOS ANGELES COUNTY

Transmission Category (1)	Year of Diagnosis									Cumulative 1982-2011 No. (%)
	2003 No. (%)	2004 No. (%)	2005 No. (%)	2006 No. (%)	2007 No. (%)	2008 No. (%)	2009 (2) No. (%)	2010(2) No. (%)	2011(2) No. (%)	
<b>MALE</b>										
Male-male sexual contact	1289 ( 82)	1104 ( 82)	1062 ( 83)	1019 ( 84)	896 ( 83)	1035 ( 87)	1051 ( 87)	893 ( 88)	565 ( 89)	44777 ( 83)
Injection drug user (IDU)	79 ( 5)	81 ( 6)	70 ( 5)	52 ( 4)	40 ( 4)	38 ( 3)	47 ( 4)	28 ( 3)	16 ( 2)	3028 ( 6)
Male-male sexual contact/IDU	120 ( 8)	107 ( 8)	99 ( 8)	97 ( 8)	102 ( 9)	86 ( 7)	75 ( 6)	59 ( 6)	38 ( 6)	4366 ( 8)
Hemophi/Transfusion	<5 ( - )	<5 ( - )	<5 ( - )	<5 ( - )	<5 ( - )	<5 ( - )	<5 ( - )	<5 ( - )	<5 ( - )	475 ( 1)
Heterosexual contact (3)	75 ( 5)	53 ( 4)	44 ( 3)	38 ( 3)	36 ( 3)	27 ( 2)	33 ( 3)	23 ( 2)	14 ( 2)	1263 ( 2)
Perinatal transmission	<5 ( - )	<5 ( - )	<5 ( - )	5 ( <1)	<5 ( - )	<5 ( - )	5 ( <1)	6 ( 1)	<5 ( - )	117 ( <1)
Other/Undetermined	<5 ( - )	<5 ( - )	<5 ( - )	<5 ( - )	<5 ( - )	<5 ( - )	<5 ( - )	<5 ( - )	<5 ( - )	14 ( <1)
Male subtotal	1567	1348	1278	1212	1077	1189	1214	1011	634	54040
[% of annual cases]	[ 88]	[ 88]	[ 87]	[ 87]	[ 87]	[ 87]	[ 88]	[ 88]	[ 89]	[ 91]
<b>FEMALE</b>										
Injection drug user (IDU)	47 ( 22)	52 ( 28)	50 ( 27)	42 ( 23)	29 ( 19)	39 ( 22)	32 ( 20)	36 ( 26)	14 ( 18)	1525 ( 29)
Hemophi/Transfusion	<5 ( - )	<5 ( - )	<5 ( - )	<5 ( - )	<5 ( - )	<5 ( - )	<5 ( - )	<5 ( - )	<5 ( - )	237 ( 5)
Heterosexual contact (3)	166 ( 77)	130 ( 70)	130 ( 71)	132 ( 74)	124 ( 79)	133 ( 76)	127 ( 76)	97 ( 70)	63 ( 79)	3321 ( 64)
Perinatal transmission	<5 ( - )	<5 ( - )	<5 ( - )	<5 ( - )	<5 ( - )	<5 ( - )	6 ( 4)	<5 ( - )	<5 ( - )	120 ( 2)
Other/Undetermined	<5 ( - )	<5 ( - )	<5 ( - )	<5 ( - )	<5 ( - )	<5 ( - )	<5 ( - )	<5 ( - )	<5 ( - )	7 ( <1)
Female subtotal	216	186	184	179	156	175	166	138	79	5210
[% of annual cases]	[ 12]	[ 12]	[ 13]	[ 13]	[ 13]	[ 13]	[ 12]	[ 12]	[ 11]	[ 9]
Total	1783	1534	1462	1391	1233	1364	1380	1149	713	59250

1. Persons without an identified risk factor are assigned a risk factor using multiple imputation (MI) methods (see Technical Notes).
2. Data are provisional due to reporting delay.
3. Heterosexual contact indicates contact with a person who is HIV-infected or at increased risk for HIV.

TABLE 20. AIDS DIAGNOSES AMONG WHITES BY GENDER, TRANSMISSION CATEGORY, AND YEAR OF DIAGNOSIS, REPORTED BY DECEMBER 31, 2011, LOS ANGELES COUNTY

Transmission Category (1)	Year of Diagnosis									Cumulative 1982-2011 No. (%)
	2003 No. (%)	2004 No. (%)	2005 No. (%)	2006 No. (%)	2007 No. (%)	2008 No. (%)	2009(2) No. (%)	2010(2) No. (%)	2011(2) No. (%)	
<b>MALE</b>										
Male-male sexual contact	487 ( 87)	341 ( 83)	329 ( 84)	344 ( 87)	252 ( 83)	312 ( 88)	296 ( 88)	206 ( 89)	159 ( 90)	20826 ( 87)
Injection drug user (IDU)	18 ( 3)	18 ( 4)	20 ( 5)	11 ( 3)	10 ( 3)	9 ( 3)	10 ( 3)	<5 ( - )	<5 ( - )	801 ( 3)
Male-male sexual contact/IDU	52 ( 9)	44 ( 11)	40 ( 10)	36 ( 9)	36 ( 12)	33 ( 9)	23 ( 7)	19 ( 8)	14 ( 8)	1999 ( 8)
Hemophi/Transfusion	<5 ( - )	<5 ( - )	<5 ( - )	<5 ( - )	<5 ( - )	<5 ( - )	<5 ( - )	<5 ( - )	<5 ( - )	240 ( 1)
Heterosexual contact (3)	<5 ( - )	6 ( 1)	<5 ( - )	5 ( 1)	<5 ( - )	<5 ( - )	6 ( 2)	<5 ( - )	<5 ( - )	168 ( 1)
Perinatal transmission	<5 ( - )	<5 ( - )	<5 ( - )	<5 ( - )	<5 ( - )	<5 ( - )	<5 ( - )	<5 ( - )	<5 ( - )	11 ( <1)
Male subtotal	561	409	393	397	302	355	335	230	177	24045
[% of annual cases]	[ 95]	[ 92]	[ 94]	[ 96]	[ 93]	[ 94]	[ 94]	[ 94]	[ 94]	[ 96]
<b>FEMALE</b>										
Injection drug user (IDU)	11 ( 41)	20 ( 55)	12 ( 45)	7 ( 42)	9 ( 42)	10 ( 43)	7 ( 30)	7 ( 47)	5 ( 43)	425 ( 42)
Hemophi/Transfusion	<5 ( - )	<5 ( - )	<5 ( - )	<5 ( - )	<5 ( - )	<5 ( - )	<5 ( - )	<5 ( - )	<5 ( - )	87 ( 9)
Heterosexual contact (3)	15 ( 55)	16 ( 45)	13 ( 47)	10 ( 58)	13 ( 58)	14 ( 58)	16 ( 70)	8 ( 53)	7 ( 57)	483 ( 48)
Perinatal transmission	<5 ( - )	<5 ( - )	<5 ( - )	<5 ( - )	<5 ( - )	<5 ( - )	<5 ( - )	<5 ( - )	<5 ( - )	13 ( 1)
Other/Undetermined	<5 ( - )	<5 ( - )	<5 ( - )	<5 ( - )	<5 ( - )	<5 ( - )	<5 ( - )	<5 ( - )	<5 ( - )	<5 ( - )
Female subtotal	27	36	27	17	22	24	23	15	12	1010
[% of annual cases]	[ 5]	[ 8]	[ 6]	[ 4]	[ 7]	[ 6]	[ 6]	[ 6]	[ 6]	[ 4]
<b>Total</b>	<b>588</b>	<b>445</b>	<b>420</b>	<b>414</b>	<b>324</b>	<b>379</b>	<b>358</b>	<b>245</b>	<b>189</b>	<b>25055</b>

1. Persons without an identified risk factor are assigned a risk factor using multiple imputation (MI) methods (see Technical Notes).
2. Data are provisional due to reporting delay.
3. Heterosexual contact indicates contact with a person who is HIV-infected or at increased risk for HIV.

TABLE 21. AIDS DIAGNOSES AMONG BLACKS BY GENDER, TRANSMISSION CATEGORY, AND YEAR OF DIAGNOSIS, REPORTED BY DECEMBER 31, 2011, LOS ANGELES COUNTY

Transmission Category (1)	Year of Diagnosis									Cumulative 1982-2011 No. (%)
	2003 No. (%)	2004 No. (%)	2005 No. (%)	2006 No. (%)	2007 No. (%)	2008 No. (%)	2009(2) No. (%)	2010(2) No. (%)	2011(2) No. (%)	
<b>MALE</b>										
Male-male sexual contact	207 ( 76)	191 ( 77)	208 ( 79)	168 ( 76)	162 ( 79)	197 ( 86)	196 ( 81)	207 ( 88)	109 ( 86)	7412 ( 74)
Injection drug user (IDU)	24 ( 9)	19 ( 8)	24 ( 9)	12 ( 5)	10 ( 5)	7 ( 3)	16 ( 7)	7 ( 3)	<5 ( - )	1063 ( 11)
Male-male sexual contact/IDU	21 ( 8)	26 ( 10)	21 ( 8)	28 ( 12)	24 ( 12)	16 ( 7)	19 ( 8)	12 ( 5)	10 ( 7)	1032 ( 10)
Hemophi/Transfusion	<5 ( - )	<5 ( - )	<5 ( - )	<5 ( - )	<5 ( - )	<5 ( - )	<5 ( - )	<5 ( - )	<5 ( - )	72 ( 1)
Heterosexual contact (3)	20 ( 7)	10 ( 4)	11 ( 4)	12 ( 6)	10 ( 5)	6 ( 3)	8 ( 3)	7 ( 3)	<5 ( - )	346 ( 3)
Perinatal transmission	<5 ( - )	<5 ( - )	<5 ( - )	<5 ( - )	<5 ( - )	<5 ( - )	<5 ( - )	<5 ( - )	<5 ( - )	48 ( <1)
Other/Undetermined	<5 ( - )	<5 ( - )	<5 ( - )	<5 ( - )	<5 ( - )	<5 ( - )	<5 ( - )	<5 ( - )	<5 ( - )	<5 ( - )
Male subtotal	273	246	265	221	206	228	242	234	127	9977
[% of annual cases]	[ 78]	[ 77]	[ 77]	[ 77]	[ 77]	[ 75]	[ 80]	[ 79]	[ 79]	[ 84]
<b>FEMALE</b>										
Injection drug user (IDU)	22 ( 29)	20 ( 27)	23 ( 29)	15 ( 23)	10 ( 17)	18 ( 24)	16 ( 25)	19 ( 31)	6 ( 18)	672 ( 34)
Hemophi/Transfusion	<5 ( - )	<5 ( - )	<5 ( - )	<5 ( - )	<5 ( - )	<5 ( - )	<5 ( - )	<5 ( - )	<5 ( - )	55 ( 3)
Heterosexual contact (3)	53 ( 68)	51 ( 69)	53 ( 69)	48 ( 74)	49 ( 82)	57 ( 75)	43 ( 70)	42 ( 67)	27 ( 79)	1182 ( 61)
Perinatal transmission	<5 ( - )	<5 ( - )	<5 ( - )	<5 ( - )	<5 ( - )	<5 ( - )	<5 ( - )	<5 ( - )	<5 ( - )	42 ( 2)
Other/Undetermined	<5 ( - )	<5 ( - )	<5 ( - )	<5 ( - )	<5 ( - )	<5 ( - )	<5 ( - )	<5 ( - )	<5 ( - )	<5 ( - )
Female subtotal	77	74	77	65	60	76	62	62	34	1952
[% of annual cases]	[ 22]	[ 23]	[ 23]	[ 23]	[ 23]	[ 25]	[ 20]	[ 21]	[ 21]	[ 16]
Total	350	320	342	286	266	304	304	296	161	11929

1. Persons without an identified risk factor are assigned a risk factor using multiple imputation (MI) methods (see Technical Notes).
2. Data are provisional due to reporting delay.
3. Heterosexual contact indicates contact with a person who is HIV-infected or at increased risk for HIV.

TABLE 22. AIDS DIAGNOSES AMONG HISPANICS/LATINOS BY GENDER, TRANSMISSION CATEGORY, AND YEAR OF DIAGNOSIS, REPORTED BY DECEMBER 31, 2011, LOS ANGELES COUNTY

Transmission Category (1)	Year of Diagnosis									Cumulative 1982-2011 No. (%)
	2003 No. (%)	2004 No. (%)	2005 No. (%)	2006 No. (%)	2007 No. (%)	2008 No. (%)	2009(2) No. (%)	2010(2) No. (%)	2011(2) No. (%)	
<b>MALE</b>										
Male-male sexual contact	525 ( 81)	515 ( 83)	474 ( 85)	454 ( 86)	424 ( 84)	446 ( 87)	505 ( 88)	432 ( 88)	268 ( 90)	14754 ( 82)
Injection drug user (IDU)	32 ( 5)	39 ( 6)	21 ( 4)	25 ( 5)	17 ( 3)	21 ( 4)	17 ( 3)	17 ( 3)	8 ( 3)	1082 ( 6)
Male-male sexual contact/IDU	45 ( 7)	32 ( 5)	31 ( 6)	32 ( 6)	40 ( 8)	32 ( 6)	29 ( 5)	26 ( 5)	13 ( 4)	1174 ( 7)
Hemophi/Transfusion	<5 ( - )	<5 ( - )	<5 ( - )	<5 ( - )	<5 ( - )	<5 ( - )	<5 ( - )	<5 ( - )	<5 ( - )	134 ( 1)
Heterosexual contact (3)	48 ( 7)	31 ( 5)	32 ( 6)	16 ( 3)	23 ( 4)	16 ( 3)	18 ( 3)	12 ( 2)	8 ( 3)	704 ( 4)
Perinatal transmission	<5 ( - )	<5 ( - )	<5 ( - )	<5 ( - )	<5 ( - )	<5 ( - )	<5 ( - )	<5 ( - )	<5 ( - )	53 (<1)
Other/Undetermined	<5 ( - )	<5 ( - )	<5 ( - )	<5 ( - )	<5 ( - )	<5 ( - )	<5 ( - )	<5 ( - )	<5 ( - )	6 (<1)
Male subtotal	652	618	558	531	504	516	574	490	297	17906
[% of annual cases]	[ 86]	[ 90]	[ 89]	[ 86]	[ 89]	[ 89]	[ 89]	[ 89]	[ 91]	[ 90]
<b>FEMALE</b>										
Injection drug user (IDU)	13 ( 13)	11 ( 16)	11 ( 16)	16 ( 19)	7 ( 10)	9 ( 14)	9 ( 12)	8 ( 13)	<5 ( - )	378 ( 18)
Hemophi/Transfusion	<5 ( - )	<5 ( - )	<5 ( - )	<5 ( - )	<5 ( - )	<5 ( - )	<5 ( - )	<5 ( - )	<5 ( - )	78 ( 4)
Heterosexual contact (3)	92 ( 87)	55 ( 83)	58 ( 83)	69 ( 79)	56 ( 87)	55 ( 83)	61 ( 82)	46 ( 80)	27 ( 88)	1528 ( 74)
Perinatal transmission	<5 ( - )	<5 ( - )	<5 ( - )	<5 ( - )	<5 ( - )	<5 ( - )	<5 ( - )	<5 ( - )	<5 ( - )	65 ( 3)
Other/Undetermined	<5 ( - )	<5 ( - )	<5 ( - )	<5 ( - )	<5 ( - )	<5 ( - )	<5 ( - )	<5 ( - )	<5 ( - )	<5 ( - )
Female subtotal	105	67	70	87	65	66	74	58	30	2052
[% of annual cases]	[ 14]	[ 10]	[ 11]	[ 14]	[ 11]	[ 11]	[ 11]	[ 11]	[ 9]	[ 10]
Total	757	685	628	618	569	582	648	548	327	19958

1. Persons without an identified risk factor are assigned a risk factor using multiple imputation (MI) methods (see Technical Notes).
2. Data are provisional due to reporting delay.
3. Heterosexual contact indicates contact with a person who is HIV-infected or at increased risk for HIV.



TABLE 23. PERSONS LIVING WITH AIDS AND RATE PER 100,000 (1) AT THE END OF CALENDAR YEAR, BY GENDER, AGE, RACE/ETHNICITY, AND TRANSMISSION CATEGORY REPORTED BY DECEMBER 31, 2011, LOS ANGELES COUNTY

Calendar Year	2004			2005			2006			2007			2008			2009 (2)			2010 (2)			2011 (2)		
	No.	(%)	Rate	No.	(%)	Rate	No.	(%)	Rate	No.	(%)	Rate	No.	(%)	Rate	No.	(%)	Rate	No.	(%)	Rate	No.	(%)	Rate
<b>GENDER</b>																								
Male	18375	(88)	366	19065	(88)	377	19748	(88)	388	20330	(88)	397	21018	(88)	409	21796	(88)	422	22541	(88)	434	23003	(88)	443
Female	2230	(11)	43	2326	(11)	45	2417	(11)	46	2510	(11)	48	2603	(11)	50	2686	(11)	51	2786	(11)	53	2827	(11)	54
Transgender (1)	189	(1)	-	209	(1)	-	209	(1)	-	223	(1)	-	229	(1)	-	241	(1)	-	244	(1)	-	253	(1)	-
<b>AGE GROUP (3)</b>																								
<13	40	(<1)	2	36	(<1)	2	28	(<1)	1	21	(<1)	1	19	(<1)	1	14	(<1)	1	12	(<1)	1	11	(<1)	1
13-19	65	(<1)	6	55	(<1)	5	64	(<1)	6	62	(<1)	6	56	(<1)	5	71	(<1)	6	68	(<1)	7	60	(<1)	6
20-29	851	(4)	59	877	(4)	61	886	(4)	62	916	(4)	63	905	(4)	62	956	(4)	65	975	(4)	62	920	(4)	58
30-39	5630	(27)	346	5267	(24)	327	4892	(22)	306	4535	(20)	289	4252	(18)	275	4021	(16)	263	3799	(15)	240	3595	(14)	227
40-49	9004	(43)	595	9505	(44)	620	9893	(44)	640	10133	(44)	655	10363	(43)	667	10466	(42)	670	10360	(41)	684	9898	(38)	653
50-59	3961	(19)	363	4472	(21)	394	5030	(22)	429	5545	(24)	462	6146	(26)	500	6795	(27)	540	7485	(29)	596	8279	(32)	659
60+	1243	(6)	91	1388	(6)	99	1581	(7)	110	1851	(8)	126	2109	(9)	138	2400	(10)	153	2872	(11)	182	3320	(13)	210
<b>RACE/ETHNICITY</b>																								
White	7424	(36)	237	7602	(35)	244	7790	(35)	252	7932	(34)	255	8132	(34)	260	8325	(34)	266	8484	(33)	275	8612	(33)	279
Black	4186	(20)	442	4355	(20)	463	4481	(20)	480	4590	(20)	487	4741	(20)	502	4895	(20)	518	5112	(20)	541	5218	(20)	552
Hispanic/Latino	8279	(40)	176	8686	(40)	181	9103	(41)	187	9497	(41)	195	9881	(41)	202	10364	(42)	211	10792	(42)	217	11050	(42)	222
Asian/PI	551	(3)	41	596	(3)	44	633	(3)	47	669	(3)	49	711	(3)	51	745	(3)	54	782	(3)	55	801	(3)	56
AI/AN	97	(<1)	321	98	(<1)	320	100	(<1)	322	104	(<1)	339	99	(<1)	344	102	(<1)	369	107	(<1)	384	106	(<1)	381
<b>TRANSMISSION CATEGORY (1,4)</b>																								
MSM	15229	(73)		15877	(74)		16490	(74)		17027	(74)		17698	(74)		18422	(75)		19103	(75)		19541	(75)	
IDU	1568	(8)		1595	(7)		1606	(7)		1605	(7)		1615	(7)		1622	(7)		1658	(6)		1662	(6)	
MSM/IDU	1609	(8)		1633	(8)		1679	(8)		1726	(7)		1749	(7)		1782	(7)		1818	(7)		1838	(7)	
Hemophi/Transfusion	139	(1)		138	(1)		132	(1)		128	(1)		124	(1)		121	(<1)		121	(<1)		119	(<1)	
Heterosexual contact	2156	(10)		2261	(10)		2366	(11)		2471	(11)		2555	(11)		2655	(11)		2742	(11)		2790	(11)	
Perinatal exposure	84	(<1)		86	(<1)		91	(<1)		96	(<1)		100	(<1)		111	(<1)		117	(<1)		121	(<1)	
Other/Undetermined	10	(<1)		10	(<1)		10	(<1)		10	(<1)		9	(<1)		10	(<1)		12	(<1)		12	(<1)	
<b>Total (5)</b>	<b>20794</b>	<b>(100)</b>	<b>205</b>	<b>21600</b>	<b>(100)</b>	<b>211</b>	<b>22374</b>	<b>(100)</b>	<b>218</b>	<b>23063</b>	<b>(100)</b>	<b>223</b>	<b>23850</b>	<b>(100)</b>	<b>230</b>	<b>24723</b>	<b>(100)</b>	<b>237</b>	<b>25571</b>	<b>(100)</b>	<b>244</b>	<b>26083</b>	<b>(100)</b>	<b>249</b>

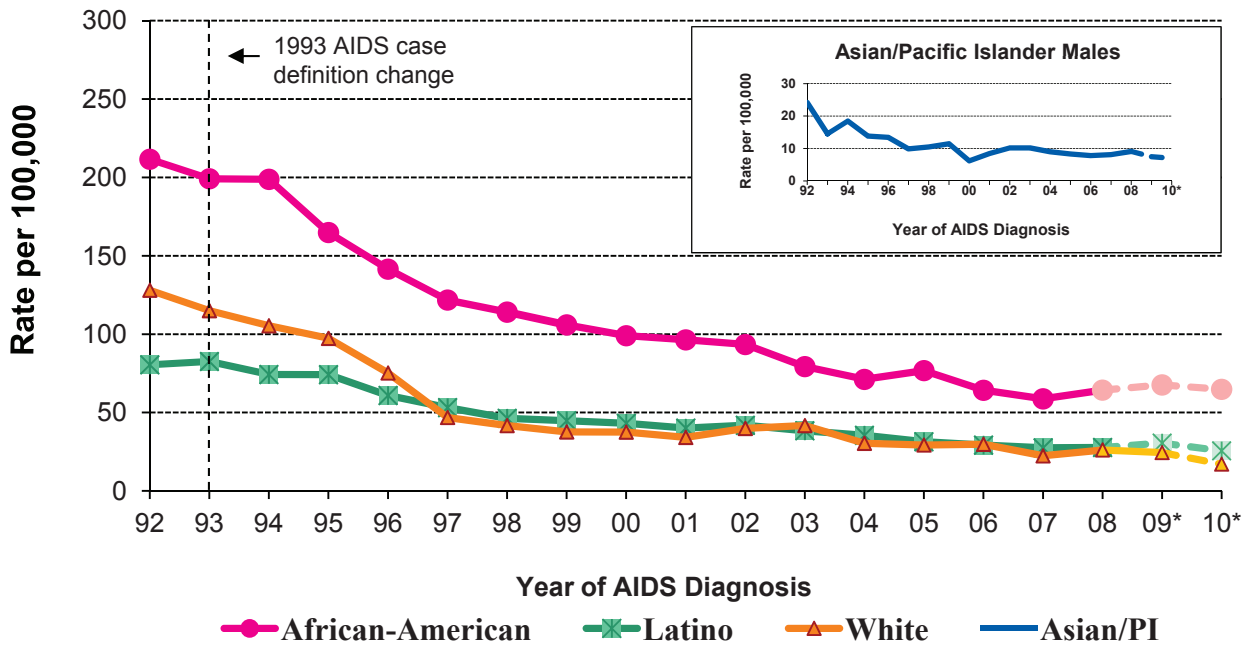
1. Rates for 2011 are calculated using population estimates for 2010. Rates that are based on observations fewer than 12 may not be reliable. Rates for transgender and transmission category are not calculated, because of the lack of denominator data (see Technical Notes).
2. Data are provisional due to reporting delay.
3. Age as of the end of year.
4. Persons without an identified risk factor are assigned a risk factor using multiple imputation (MI) methods (see Technical Notes).
5. Total includes persons who have multiple races/ethnicities or have missing information on race/ethnicity.

TABLE 24. PERSONS LIVING WITH AIDS AND RATE PER 100,000 (1) AS OF DECEMBER 31, 2011  
 BY SERVICE PLANNING AREA (SPA), GENDER, AGE, RACE/ETHNICITY AND TRANSMISSION CATEGORY, LOS ANGELES COUNTY

Service Planning Area	Antelope Valley No. (%) Rate	San Fernando No. (%) Rate	San Gabriel No. (%) Rate	Metro No. (%) Rate	West No. (%) Rate	South No. (%) Rate	East No. (%) Rate	South Bay/LB No. (%) Rate	Total (2) No. (%) Rate
<b>GENDER (3)</b>									
Male	267 (81) 143	3179 (89) 288	1550 (85) 167	8877 (92)1371	1253 (91) 391	2149 (78) 410	1493 (85) 218	4185 (87) 525	23003 (88) 443
Female	61 (18) 33	361 (10) 32	266 (15) 28	631 ( 7) 103	121 ( 9) 36	565 (21) 104	243 (14) 35	575 (12) 70	2827 (11) 54
Transgender	<5 ( -) -	39 ( 1) -	17 ( 1) -	104 ( 1) -	7 ( 1) -	33 ( 1) -	12 ( 1) -	37 ( 1) -	253 ( 1) -
<b>AGE GROUP (4)</b>									
<13	<5 ( -) -	<5 ( -) -	<5 ( -) -	<5 ( -) -	<5 ( -) -	<5 ( -) -	<5 ( -) -	<5 ( -) -	11 (<1) 1
13-19	<5 ( -) -	5 (<1) 2	5 (<1) 3	14 (<1) 12	<5 ( -) -	17 ( 1) 13	7 (<1) 5	11 (<1) 7	60 (<1) 6
20-29	11 ( 3) 15	125 ( 3) 38	70 ( 4) 23	242 ( 3) 152	28 ( 2) 40	176 ( 6) 97	85 ( 5) 37	183 ( 4) 78	920 ( 4) 58
30-39	48 (15) 113	464 (13) 145	285 (16) 106	1138 (12) 492	140 (10) 115	479 (17) 296	294 (17) 143	742 (15) 319	3595 (14) 227
40-49	112 (34) 238	1313 (37) 396	676 (37) 259	3797 (40)1814	490 (35) 428	971 (35) 753	667 (38) 367	1853 (39) 768	9898 (38) 653
50-59	111 (34) 243	1169 (33) 401	564 (31) 237	3175 (33)2173	498 (36) 549	781 (28) 808	486 (28) 329	1475 (31) 741	8279 (32) 659
60+	48 (15) 106	501 (14) 142	232 (13) 74	1243 (13) 669	224 (16) 175	322 (12) 284	209 (12) 110	529 (11) 209	3320 (13) 210
<b>RACE/ETHNICITY</b>									
White	115 (35) 75	1499 (42) 146	391 (21) 86	3691 (38)1316	775 (56) 186	87 ( 3) 318	219 (13) 96	1804 (38) 365	8612 (33) 279
Black	95 (29) 183	412 (12) 525	268 (15) 335	1537 (16)2132	205 (15) 458	1383 (50) 417	100 ( 6) 272	1208 (25) 486	5218 (20) 552
Hispanic/Latino	110 (33) 75	1477 (41) 171	1015 (55) 118	3947 (41) 569	319 (23) 282	1244 (45) 181	1375 (79) 140	1552 (32) 249	11050 (42) 222
Asian/PI	5 ( 2) 33	119 ( 3) 49	139 ( 8) 29	266 ( 3) 128	43 ( 3) 51	7 (<1) 36	40 ( 2) 32	180 ( 4) 72	801 ( 3) 56
AI/AN	<5 ( -) -	14 (<1) 238	8 (<1) 179	44 (<1)1254	11 ( 1) 776	7 (<1) 377	6 (<1) 142	15 (<1) 346	106 (<1) 381
<b>TRANSMISSION CATEGORY (3,5)</b>									
MSM	194 (59)	2689 (75)	1287 (70)	7766 (81)	1096 (79)	1735 (63)	1247 (71)	3487 (73)	19541 (75)
IDU	44 (13)	231 ( 6)	162 ( 9)	414 ( 4)	79 ( 6)	257 ( 9)	127 ( 7)	342 ( 7)	1662 ( 6)
MSM/IDU	29 ( 9)	242 ( 7)	106 ( 6)	737 ( 8)	78 ( 6)	156 ( 6)	101 ( 6)	381 ( 8)	1838 ( 7)
Hemophi/Transfusion	<5 ( -)	22 ( 1)	13 ( 1)	23 (<1)	10 ( 1)	18 ( 1)	14 ( 1)	18 (<1)	119 (<1)
Heterosexual contact	61 (18)	383 (11)	253 (14)	639 ( 7)	113 ( 8)	546 (20)	246 (14)	548 (11)	2790 (11)
Perinatal exposure	<5 ( -)	11 (<1)	10 ( 1)	31 (<1)	<5 ( -)	32 ( 1)	11 ( 1)	21 (<1)	121 (<1)
Other/Undetermined	<5 ( -)	<5 ( -)	<5 ( -)	<5 ( -)	<5 ( -)	<5 ( -)	<5 ( -)	<5 ( -)	12 (<1)
Total [% of total] (6)	330 [ 1] 89	3579 [ 14]161	1833 [ 7] 97	9612 [ 37]764	1381 [ 5]209	2747 [ 11]257	1748 [ 7]127	4797 [ 18]296	26083 [100]249

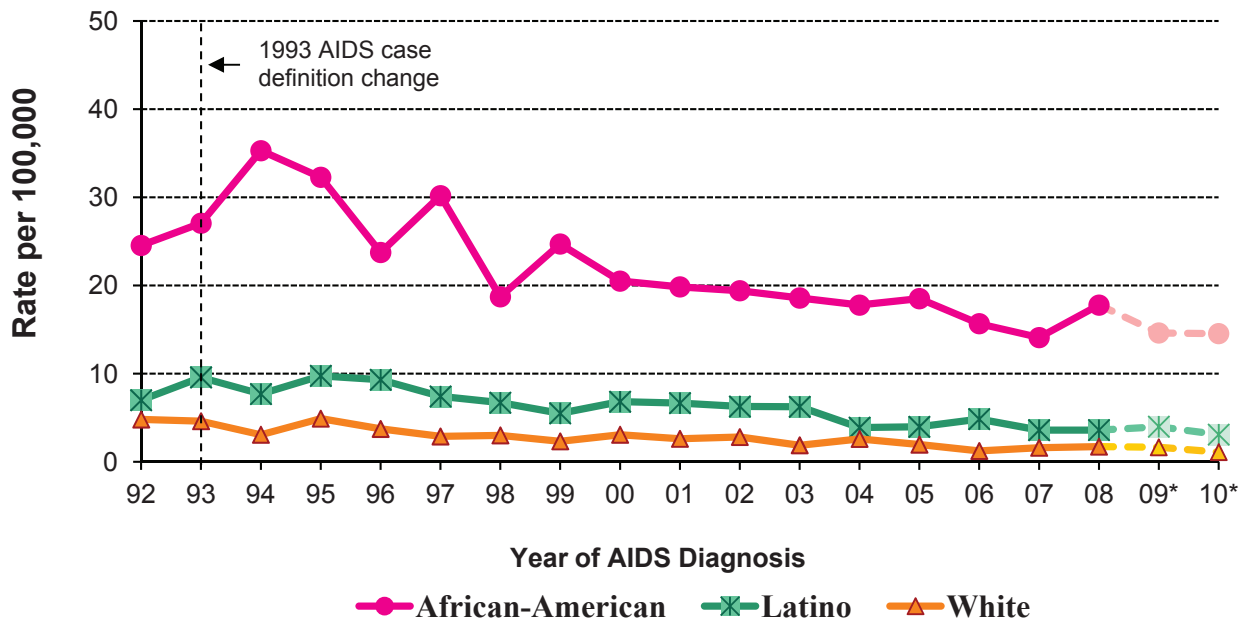
1. Rates are based on year 2010 population estimates. Rates that are based on observations fewer than 12 may not be reliable (see Technical Notes).  
 2. Total includes persons with no information on SPA.  
 3. Rates for transgender and transmission category are not calculated, because of the lack of denominator data. 4. Age as of December 31, 2011.  
 5. Persons without an identified risk factor are assigned a risk factor using multiple imputation (MI) methods (see Technical Notes).  
 6. Total includes persons who have multiple races/ethnicities or have missing information on race/ethnicity.

**FIGURE 4. MALE ADULT/ADOLESCENT AIDS RATES BY RACE/ETHNICITY<sup>1</sup> AND YEAR OF DIAGNOSIS, LOS ANGELES COUNTY, 1992-2010**



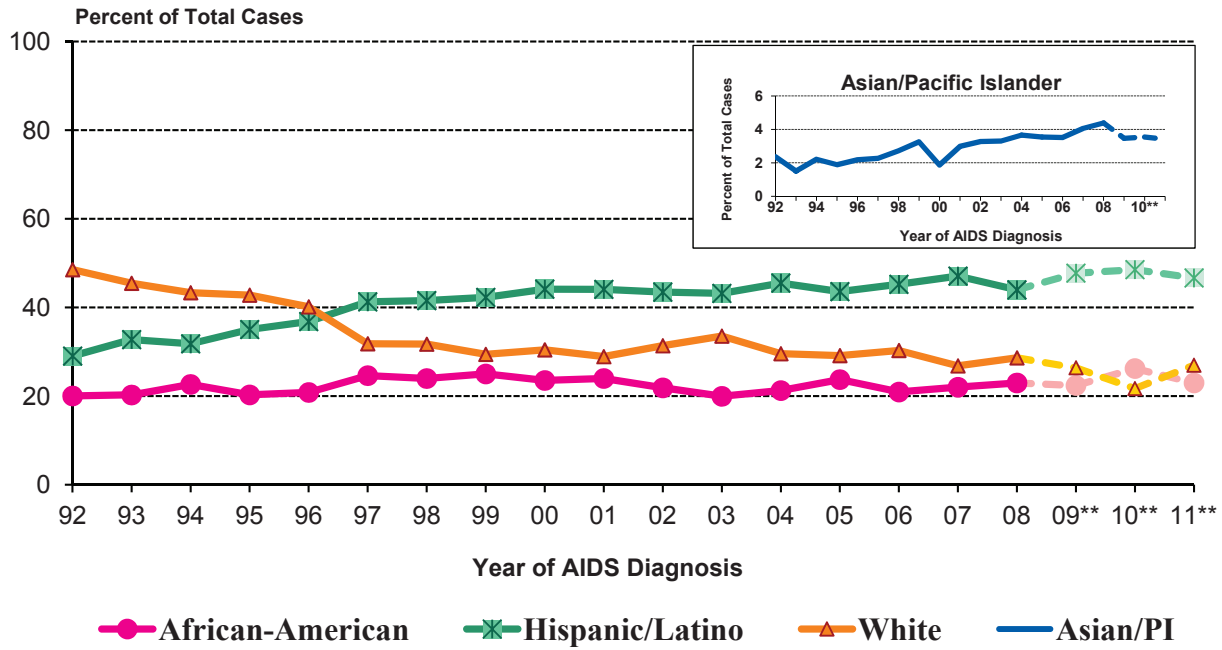
1. AIDS rates for Native Americans and Alaskan Natives are not presented here because rates based on small numbers may result in unstable estimates.  
 \* Data are provisional due to reporting delay.

**FIGURE 5. FEMALE ADULT/ADOLESCENT AIDS RATES BY RACE/ETHNICITY<sup>1</sup> AND YEAR OF DIAGNOSIS, LOS ANGELES COUNTY, 1992-2010**



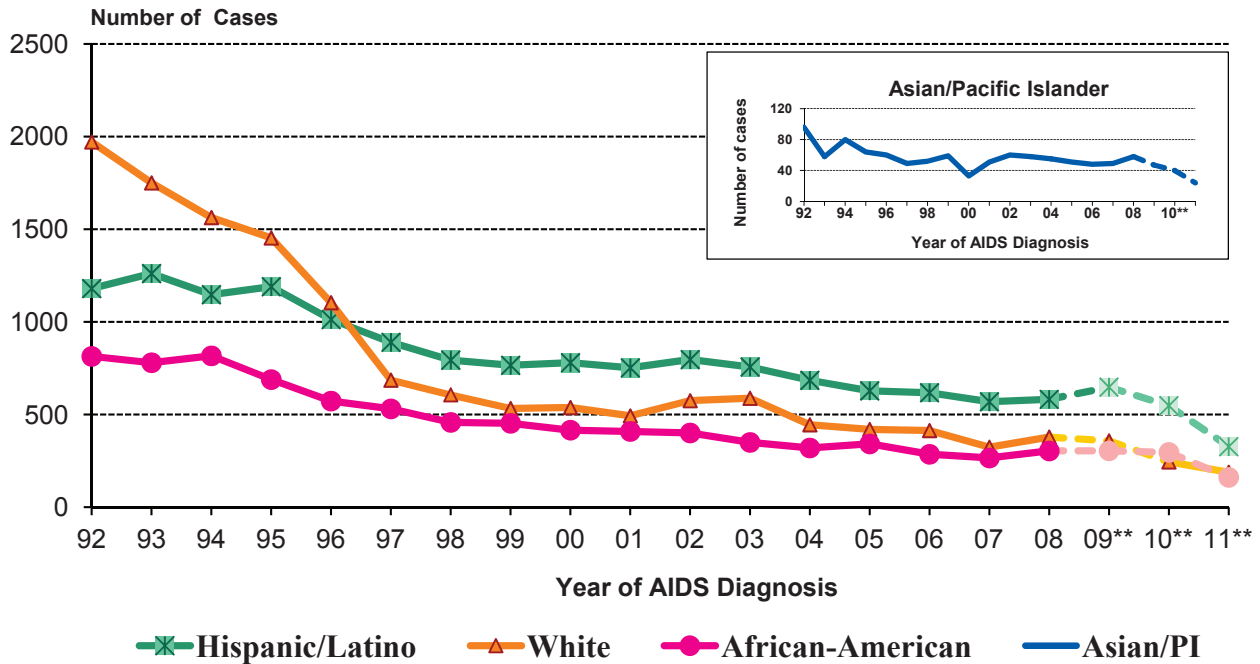
1. AIDS rates for Asian/Pacific Islander females, Native Americans and Alaskan Natives are not presented here because rates based on small numbers may result in unstable estimates.  
 \* Data are provisional due to reporting delay.

**FIGURE 6. PROPORTION OF AIDS DIAGNOSES AMONG ADULTS/ADOLESCENTS BY RACE/ETHNICITY\* AND YEAR OF DIAGNOSIS, LOS ANGELES COUNTY, 1992-2011**



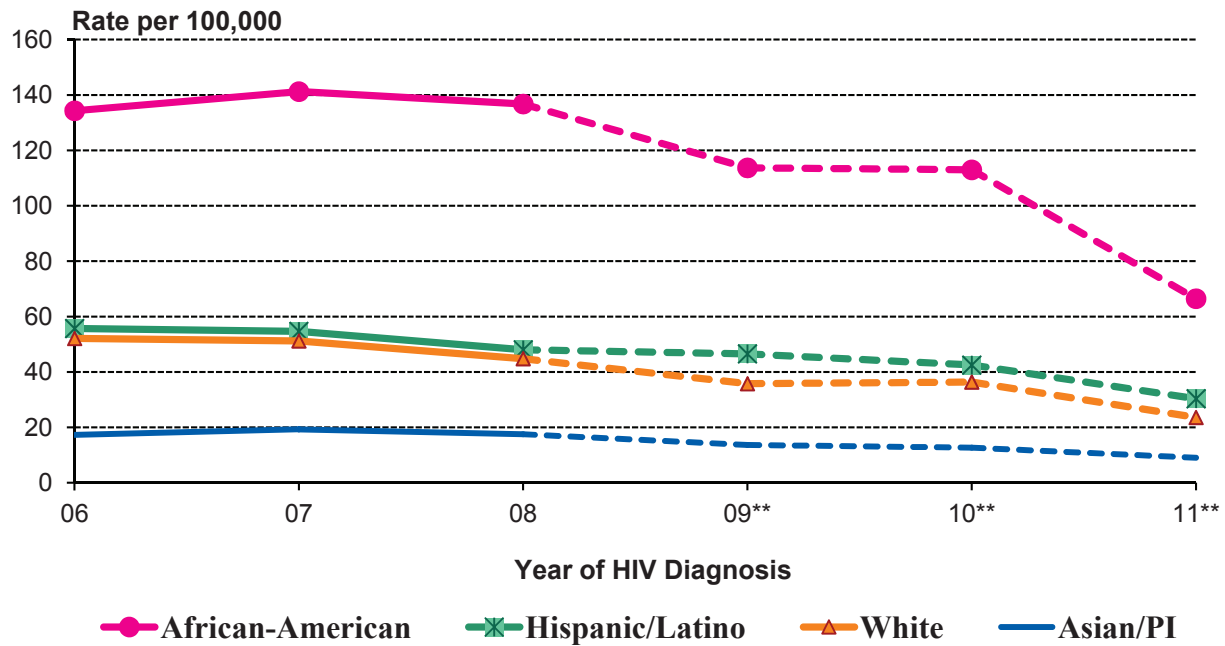
\* American Indian and Alaskan Native are not presented due to small numbers that may cause unstable estimates.  
 \*\* Data are provisional due to reporting delay.

**FIGURE 7. NUMBER OF AIDS DIAGNOSES AMONG ADULTS/ADOLESCENTS BY RACE/ETHNICITY\* AND YEAR OF DIAGNOSIS, LOS ANGELES COUNTY, 1992-2011**



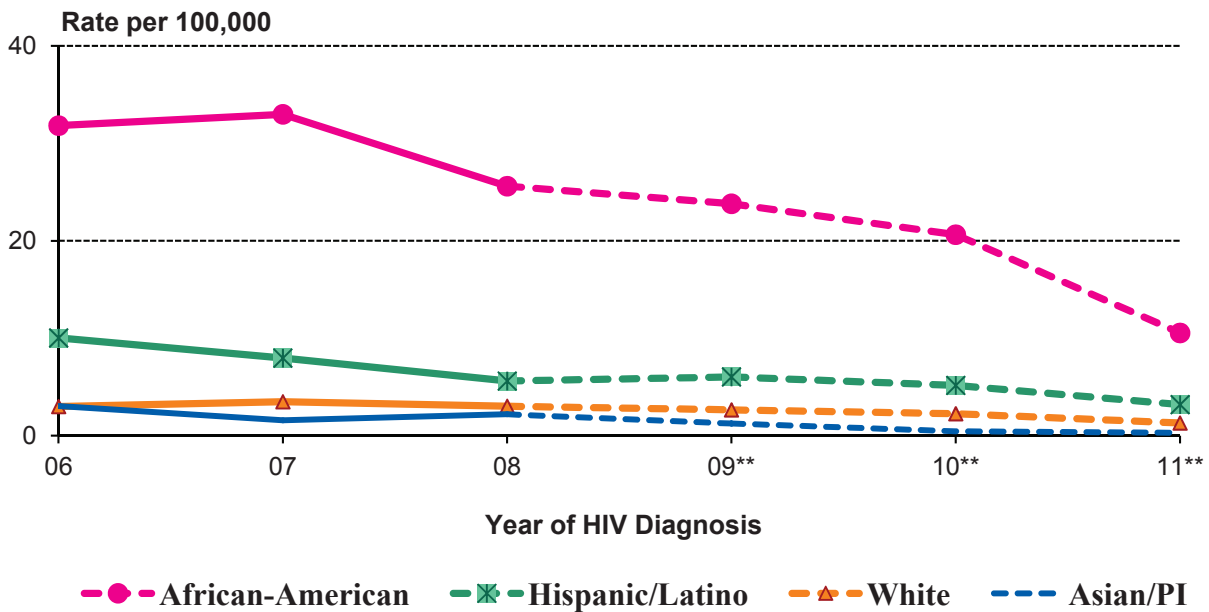
\* American Indian and Alaskan Native are not presented due to small numbers that may cause unstable estimates.  
 \*\* Data are provisional due to reporting delay.

**FIGURE 8. RATES OF HIV/AIDS DIAGNOSES AMONG ADULT/ADOLESCENT MEN BY RACE/ETHNICITY\*, LOS ANGELES COUNTY, 2006-2011**



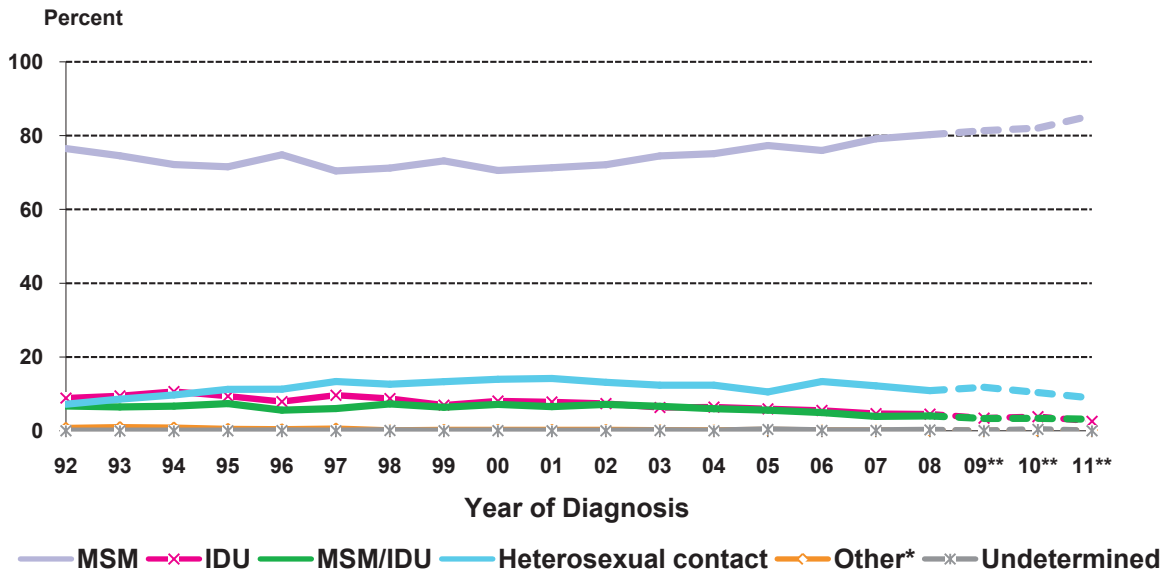
\* American Indian and Alaskan Native are not presented due to small numbers that may cause unstable estimates.  
 \*\* Data are provisional due to reporting delay.

**FIGURE 9. RATES OF HIV/AIDS DIAGNOSES AMONG ADULT/ADOLESCENT WOMEN BY RACE/ETHNICITY\*, LOS ANGELES COUNTY, 2006-2011**



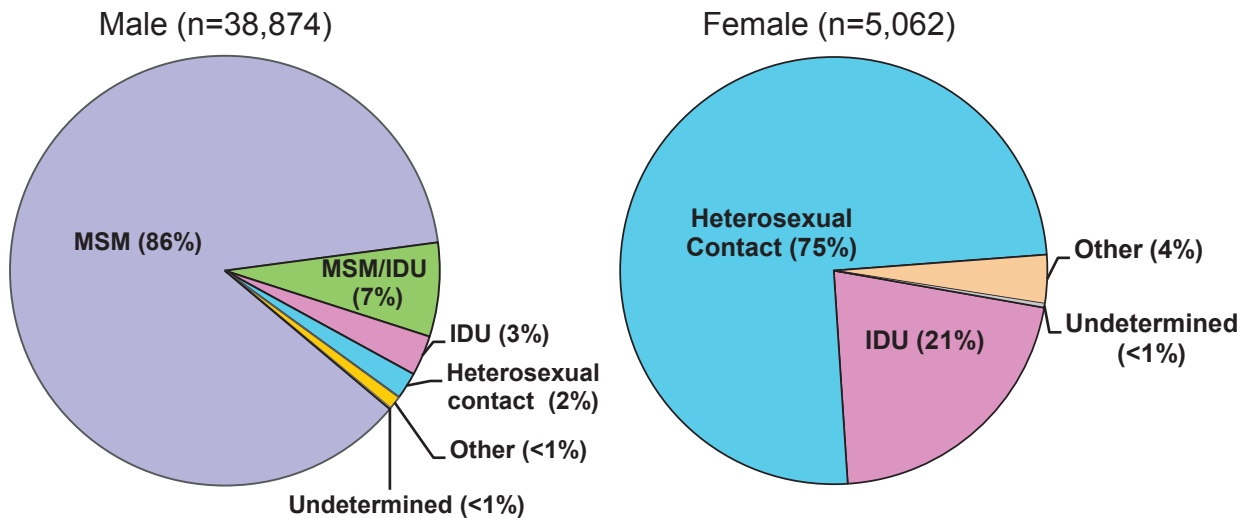
\* American Indian and Alaskan Native are not presented due to small numbers that may cause unstable estimates.  
 \*\* Data are provisional due to reporting delay.

**FIGURE 10. DIAGNOSES OF HIV (INCL AIDS) AMONG ADULTS/ADOLESCENTS, BY TRANSMISSION CATEGORY\* AND YEAR OF HIV DIAGNOSIS, LOS ANGELES COUNTY, 1992-2011**



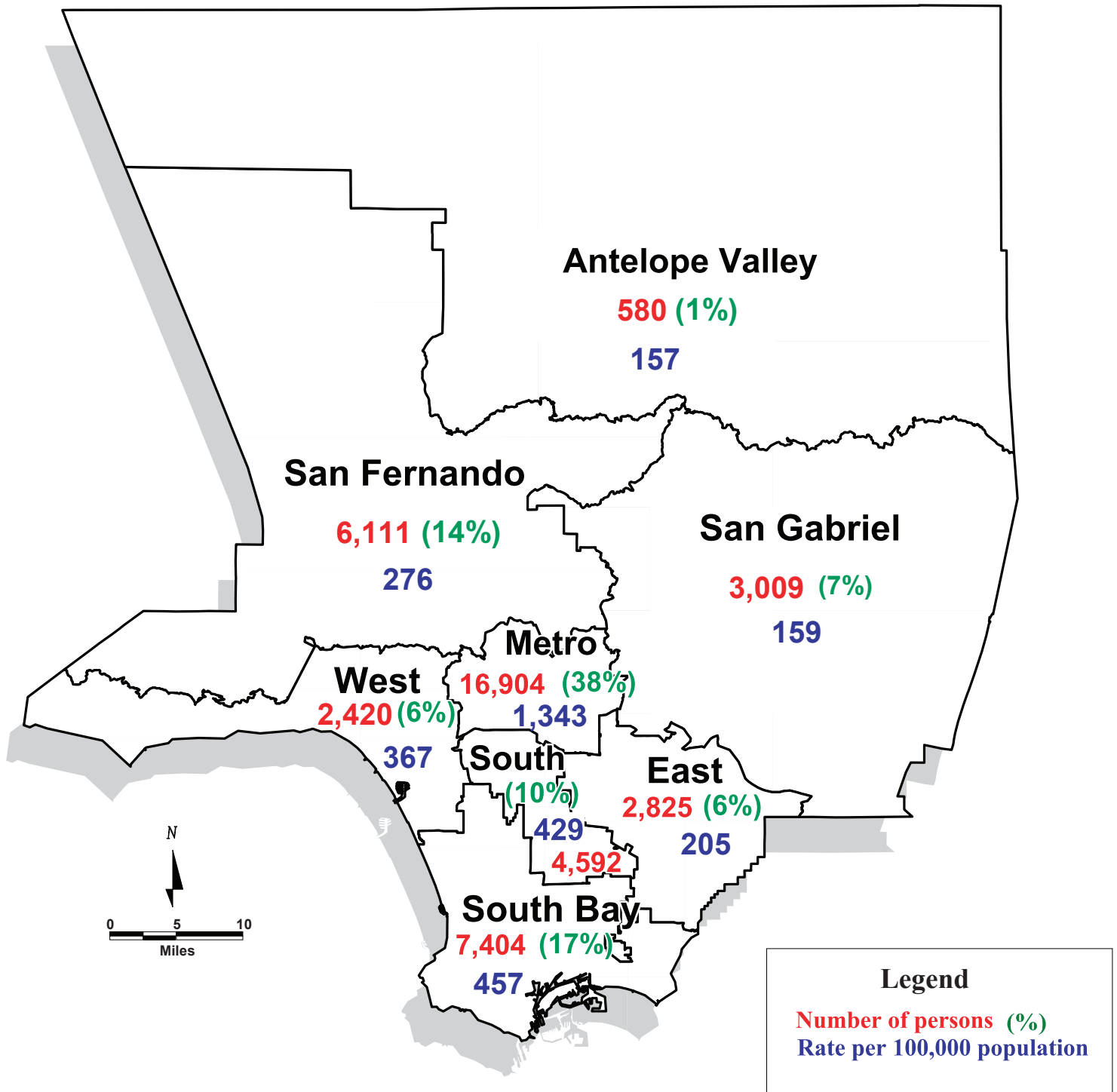
\* Persons with an undetermined transmission category are assigned a risk factor using multiple imputation (MI) methods. Other risks include hemophilia or coagulation disorder, transfusion recipient, perinatal exposure, and confirmed other risk.  
 \*\* Data are provisional due to reporting delay.

**FIGURE 11. TRANSMISSION CATEGORY\* FOR PERSONS LIVING WITH HIV/AIDS\*\* AS OF DECEMBER 31, 2011 BY GENDER IN LOS ANGELES COUNTY**



\* Persons with an undetermined transmission category are assigned a risk factor using multiple imputation (MI) methods. Other risks include hemophilia or coagulation disorder, transfusion recipient, perinatal exposure and confirmed other risk.  
 \*\* Data are provisional due to reporting delay.

**Fig 12. Persons Reported Living with HIV/AIDS As of 12/31/2011 (1) and Living HIV/AIDS Rate (2) Per 100,000 Population By Service Planning Area (3) (SPA) In Los Angeles County (N=43,936)**



1. Persons with HIV are based on named reports from April 2006 to December 2011.
2. Rates are based on population estimates (PEPS) for 2010.
3. Does not include 91 persons (<1%) whose information on SPA at time of diagnosis was unknown.



## Appendix 1: 2008 Revised Surveillance Case Definitions for Human Immunodeficiency Virus (HIV) Infection Among Adults and Adolescents (aged ≥13 years)

*“These case definitions are intended for public health surveillance only and not as a guide for clinical diagnosis. Public health surveillance data are used primarily for monitoring the HIV epidemic and for planning on a population level, not for making clinical decisions for individual patients. CDC and the Council of State and Territorial Epidemiologists recommend that all states and territories conduct case surveillance of HIV infection and AIDS using the 2008 surveillance case definitions, effective immediately.” ~ MMWR 2008;57 (No. RR-10)*

Stage	Laboratory Evidence*	Clinical Evidence
Stage 1	Laboratory confirmation of HIV infection and CD4+ T-lymphocyte count of ≥500 cells/μl or CD4+ T-lymphocyte percentage of ≥29	None required (but no AIDS-defining condition)
Stage 2	Laboratory confirmation of HIV infection and CD4+ T-lymphocyte count of 200-499 cells/μl or CD4+ T-lymphocyte percentage of 14-28	None required (but no AIDS-defining condition)
Stage 3 (AIDS)	Laboratory confirmation of HIV infection and CD4+ T-lymphocyte count of <200 cells/μl or CD4+ T-lymphocyte percentage of <14 <sup>†</sup>	Or documentation of an AIDS-defining condition (with laboratory confirmation of HIV infection) <sup>†</sup>
Stage unknown <sup>§</sup>	Laboratory confirmation of HIV infection and no information on CD4+ T-lymphocyte count or percentage	And no information on presence of AIDS-defining conditions

\* The CD4+ T-lymphocyte percentage is the percentage of total lymphocytes. If the CD4+ T-lymphocyte count and percentage do not correspond to the same HIV infection stage, select the more severe stage.

<sup>†</sup> Documentation of an AIDS-defining condition (Appendix 2) supersedes a CD4+ T-lymphocyte count of ≥200 cells/μL and a CD4+ T-lymphocyte percentage of total lymphocytes of ≥14. Definitive diagnostic methods for these conditions are available in Appendix C of the 1993 revised HIV classification system and the expanded AIDS case definition (CDC. 1993 Revised classification system for HIV infection and expanded surveillance case definition for AIDS among adolescents and adults. MMWR 1992;41[No. RR-17]) and from the National Notifiable Diseases Surveillance System (available at [http://www.cdc.gov/epo/dphsi/casedef/case\\_definitions.htm](http://www.cdc.gov/epo/dphsi/casedef/case_definitions.htm)).

<sup>§</sup> Although cases with no information on CD4+ T-lymphocyte count or percentage or on the presence of AIDS-defining conditions can be classified as stage unknown, every effort should be made to report CD4+ T-lymphocyte counts or percentages and the presence of AIDS-defining conditions at the time of diagnosis. Additional CD4+ T-lymphocyte counts or percentages and any identified AIDS-defining conditions can be reported as recommended. (Council of State and Territorial Epidemiologists. Laboratory reporting of clinical test results indicative of HIV infection: new standards for a new era of surveillance and prevention [Position Statement 04-ID-07]; 2004. Available at <http://www.cste.org/ps/2004pdf/04-ID-07-final.pdf>.)

### Criteria for HIV infection for persons aged ≥13 years:

#### Laboratory Criteria:

Positive result from an HIV antibody screening test (e.g., reactive enzyme immunoassay [EIA]\*) confirmed by a positive result from a supplemental HIV antibody test (e.g., Western blot or indirect immunofluorescence assay test) OR positive result or report of a detectable quantity (i.e., within the established limits of the laboratory test) from any of the following HIV virologic (i.e., non-antibody) tests<sup>†</sup>:

- HIV nucleic acid (DNA or RNA) detection test (e.g., polymerase chain reaction [PCR])
- HIV p24 antigen test, including neutralization assay
- HIV isolation (viral culture)

#### Other Criterion (for Cases that Do Not Meet Laboratory Criteria)

HIV infection diagnosed by a physician or qualified medical-care provider<sup>§</sup> based on the laboratory criteria and documented in a medical record.<sup>¶</sup> Oral reports of prior laboratory test results are not acceptable.

\* Rapid tests are EIAs that do not have to be repeated but require a confirmatory test if reactive. Most conventional EIAs require a repeatedly reactive EIA that is confirmed by a positive result with a supplemental test for HIV antibody. Standard laboratory testing procedures should always be followed.



† For HIV screening, HIV virologic (non-antibody) tests should not be used in lieu of approved HIV antibody screening tests. A negative result (i.e., undetectable or nonreactive) from an HIV virologic test (e.g., viral RNA nucleic acid test) does not rule out the diagnosis of HIV infection.

§ Qualified medical-care providers might differ by jurisdiction and might include physicians, nurse practitioners, physician assistants, or nurse midwives.

¶ An original or copy of the laboratory report is preferred; however, in the rare instance the laboratory report is not available, a description of the laboratory report results by a physician or qualified medical-care provider documented in the medical record is acceptable for surveillance purposes. Every effort should be made to obtain a copy of the laboratory report for documentation in the medical record.

For the criteria for HIV infection among children aged <13 years, see “Revised Surveillance Case Definitions for HIV Infection Among Adults, Adolescents, and Children Aged <18 Months and for HIV Infection and AIDS Among Children Aged 18 Months to <13 Years --- United States, 2008”- MMWR 2008;57 (No. RR-10) <http://www.cdc.gov/mmwr/preview/mmwrhtml/rr5710a1.htm>

## Appendix 2: AIDS-Defining Conditions

- Bacterial infections, multiple or recurrent\*
- Candidiasis of bronchi, trachea, or lungs
- Candidiasis of esophagus †
- Cervical cancer, invasive §
- Coccidioidomycosis, disseminated or extrapulmonary
- Cryptococcosis, extrapulmonary
- Cryptosporidiosis, chronic intestinal (>1 month’s duration)
- Cytomegalovirus disease (other than liver, spleen, or nodes), onset at age >1 month
- Cytomegalovirus retinitis (with loss of vision) †
- Encephalopathy, HIV related
- Herpes simplex: chronic ulcers (>1 month’s duration) or bronchitis, pneumonitis, or esophagitis (onset at age >1 month)
- Histoplasmosis, disseminated or extrapulmonary
- Isosporiasis, chronic intestinal (>1 month’s duration)
- Kaposi’s sarcoma†
- Lymphoid interstitial pneumonia or pulmonary lymphoid hyperplasia complex\*†
- Lymphoma, Burkitt’s (or equivalent term)
- Lymphoma, immunoblastic (or equivalent term)
- Lymphoma, primary, of brain
- *Mycobacterium avium* complex or *Mycobacterium kansasii*, disseminated or extrapulmonary†
- *Mycobacterium tuberculosis* of any site, pulmonary, †§ disseminated,† or extrapulmonary†
- *Mycobacterium*, other species or unidentified species, disseminated† or extrapulmonary†
- *Pneumocystis jirovecii* pneumonia†
- Pneumonia, recurrent †§
- Progressive multifocal leukoencephalopathy
- *Salmonella* septicemia, recurrent
- Toxoplasmosis of brain, onset at age >1 month †
- Wasting syndrome attributed to HIV

\* Only among children aged <13 years. (CDC. 1994 Revised classification system for human immunodeficiency virus infection in children less than 13 years of age. MMWR 1994;43[No. RR-12].)

† Condition that might be diagnosed presumptively.

§ Only among adults and adolescents aged ≥13 years. (CDC. 1993 Revised classification system for HIV infection and expanded surveillance case definition for AIDS among adolescents and adults. MMWR 1992;41[No. RR-17].)

## Appendix 3: Technical Notes

### Geographical Information System (GIS)

Residence at earliest HIV or AIDS diagnosis is used to determine the geographical information when the data are presented by the year of diagnosis. In the tables or maps for persons living with a diagnosis of HIV infection (including AIDS), the residential information at time of AIDS diagnosis is used to determine the associated geographical boundary. For non-AIDS HIV cases or AIDS cases for whom the specific residential information at time of AIDS diagnosis is not available, the residence at time of HIV diagnosis or the most recently reported residential information is used provided that the address is valid and within the L.A. County jurisdiction.

The presentation of data at ZIP-code level is based on the map definition released in 2011. The definition for health districts and Service Planning Areas (SPA) are based on new boundary files released in 2011.

Caution should be exercised when interpreting zip code-level and small city/area rates and case counts because these values are inclusive of any correctional populations and may be artificially inflated when an institution is housed in the zip code or area.

### Race and ethnicity

Mandated collection of race and ethnicity data was implemented in January 1, 2003 as required by the OMB Statistical Policy Directive 15. A minimum of 5 race categories should be collected including American Indian or Alaska Native, Asian, black or African American, Native Hawaiian or Other Pacific Islander, and white. Additionally, systems must be able to retain information when multiple racial categories are reported. Two ethnicity categories should be collected regardless of race: Hispanic and non-Hispanic.

Race and Ethnicity in this report are grouped using the following criteria exclusively: A person is considered to be 'Hispanic' if so indicated in race or ethnicity field, regardless of any other race information found for the person. When not indicated as 'Hispanic', a person is considered to be 'American Indian/Alaskan Native' if the race field contains AI/AN information, regardless of any other race information found for this person. A person is considered to be 'Asian/Pacific Islander' when either indicated as Asian or Native Hawaiian/Pacific Islander, or both in the race fields. Aside from the above criteria, a person is categorized as 'Multi-race' when two or more races are indicated in the above race fields. All other persons with a single race indicated are placed in the corresponding race category. Persons with multiple racial categories or unknown race are included in the total

numbers in Table 2-3, Table 6, Table 9-18, and Table 23-24.

### Rates

For Figure 4-5, Figure 8-9, Table 6-12, Table 14, Table 16-18, and Table 23-24. Rates are calculated using Population Estimation and Projection System (PEPS) for 1992-2010 that were prepared by Walter R. McDonald & Associates, Inc. (WRMA) for Urban Research, LA County ISD. Conforming to standard criterion used by the National Center for Health Statistics, rates are considered unreliable when the relative standard error of the rate is greater than or equal to 30%--that is, when rates are based on less than or equal to 12 observations.

### Reporting Delay

Reporting delay is defined as the time interval between diagnosis or death and the reporting of diagnosis or death to Los Angeles County HIV Epidemiology, DHSP. The median reporting delay for all HIV/AIDS cases reported in 2010 was 10 months (range 0 to 364 months). The impact of report delay must be considered when evaluating trends in case numbers and rates over time (Figure 1-10, Tables 1, Table 6-8, and Table 17-23).

### Surveillance of HIV Infection in Los Angeles County

Surveillance of HIV infections (including AIDS) in Los Angeles County (LAC) is conducted through active and passive surveillance to identify and collect information on cases of HIV and AIDS diagnosed at hospitals, clinics, private physician offices, laboratories, community-based organizations (CBOs), and hospices. Active surveillance requires HIV Epidemiology, DHSP staff to routinely contact and visit sites to facilitate the completion of HIV/AIDS case reports. Mandated reporters participating in passive surveillance submit case reports to HEP without any contact from surveillance staff. In LAC, about 75%-80% of persons reported with a diagnosis of HIV infection are collected through active surveillance activities.

Data on diagnoses of HIV infection should be interpreted with caution. HIV surveillance reports may not be representative of all persons infected with HIV because not all infected persons have been tested. Furthermore, the results of anonymous tests are not required to report in California. Therefore, reports of confidential test results may not represent all persons with HIV infection. Many factors, including the extent to which testing is routinely offered to specific groups and the availability of, and access to, medical care and testing services, may influence testing patterns. These data only provide a minimum estimate of persons known to be HIV infected.

## **Transmission Categories**

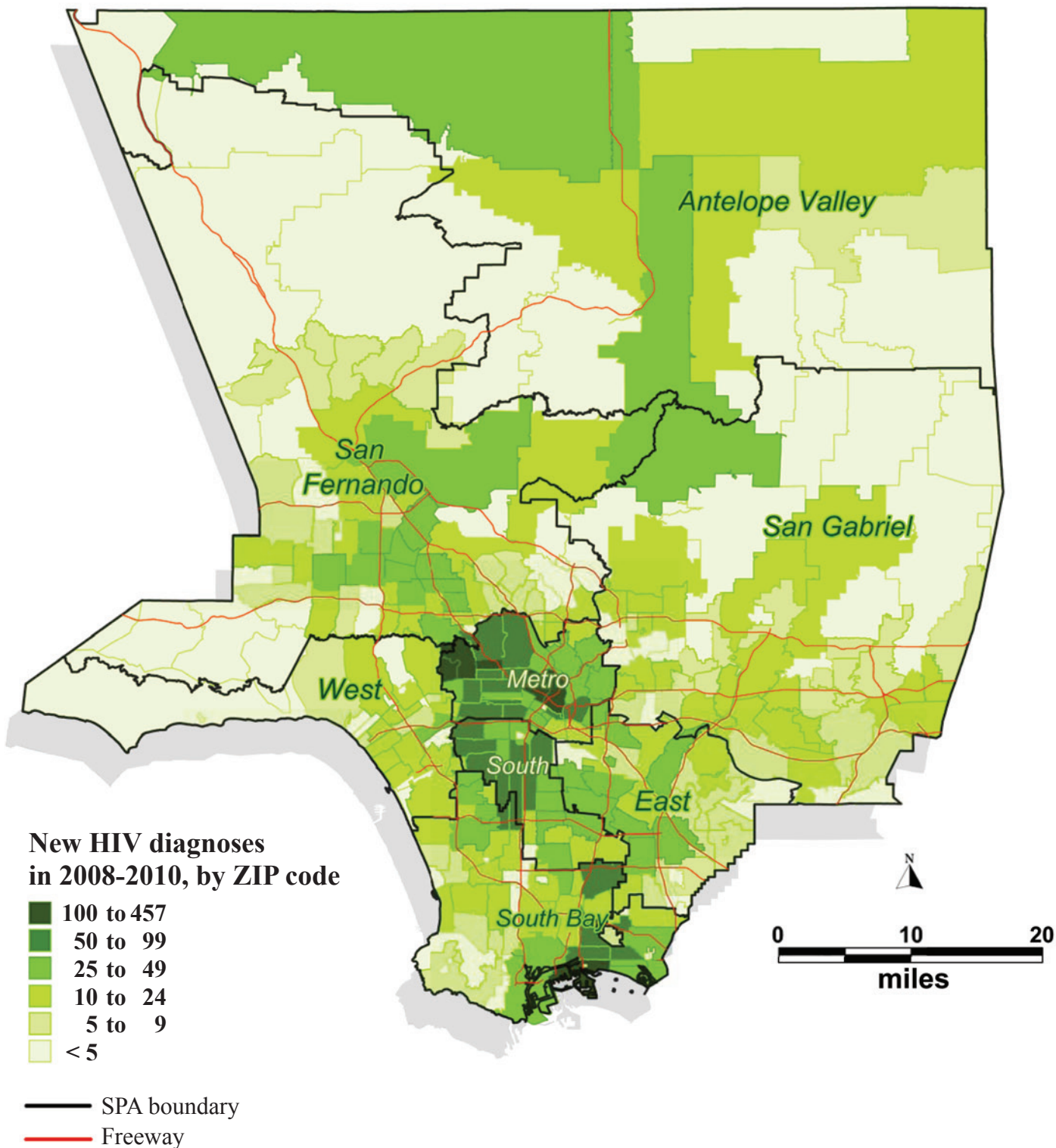
Transmission categories are assigned in a hierarchical fashion (listed from highest to lowest in the column headed "Transmission Category"). Persons who have been identified with two or more transmission categories are assigned to the category listed highest in the hierarchy. For example, a man who reports sexual contact with another man and heterosexual contact with an HIV-positive woman would be classified as "male-male sexual contact." The only exception to this rule includes those men who report both categories for sexual contact with another man and injection-drug use. A separate transmission category is created for these cases.

The heterosexual contact transmission category is limited to persons who had heterosexual contacts with an HIV-infected or a sexual partner with an increased risk for HIV. Transfusion or hemophilia transmission category is limited to persons who received blood transfusion no later than 1985 or persons who had been investigated and confirmed as having received transfusion of contaminated blood after 1985.

Cases in persons with no reported exposure to HIV through any of the routes listed in the hierarchy of transmission categories are classified as "undetermined" transmission category. These cases include some persons still under investigation; cases in persons whose exposure history is missing because they died; cases that have been followed up but declined to be interviewed, or were lost to follow-up; and cases in persons who were interviewed or for whom other follow-up information was available but for whom no mode of exposure was identified. If the investigation identifies a mode of exposure, the case is reclassified into the corresponding transmission category.

Because a substantial proportion of cases of HIV infection and AIDS are reported without an identified risk factor, we use the CDC-recommended multiple imputation methods to assign a risk factor for these cases. Multiple imputation is a statistical approach in which each missing risk factor is replaced with a set of plausible values that represent the uncertainty about the true, but missing value. The plausible values are analyzed by using standard procedures, and the results from these analyses are then combined to produce the final results. In this report, multiple imputation has been used in tables showing estimated distribution by HIV transmission category for diagnoses among adults and adolescents, but not in tables concerning diagnoses among children (because the number of cases in children is small, missing risk factors were not imputed).

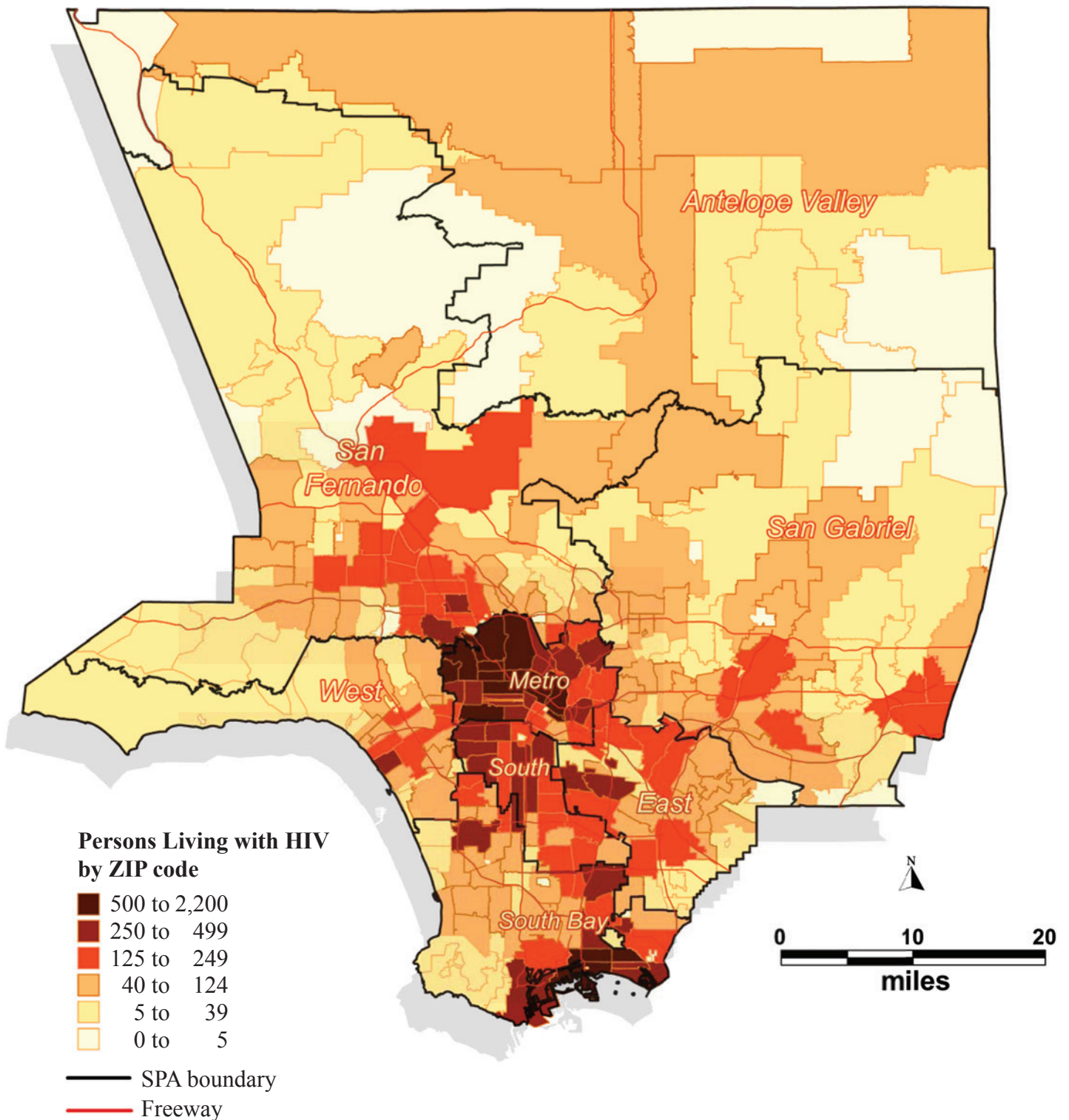
**Fig 13. New HIV Diagnoses in 2008-2010 by ZIP Code and Service Planning Area (SPA) in Los Angeles County (N=6,612)**



Data are provisional due to reporting delay. Zip code information is based on the residence at the time of diagnosis.



**Fig 14. Persons Living with a Diagnosis of HIV infection as of 12/31/2011 by ZIP code and Service Planning Area (SPA) in Los Angeles County (N=43,936)**



Data are provisional due to reporting delay. Zip code information is based on the residence at the time of diagnosis or the most recently reported residential information.

