

County of Los Angeles Department of Public Health

2010-2011 Influenza Campaign Report

A summary of Influenza doses administered in the 2010 – 2011 Influenza Campaign - County Of Los Angeles Department Of Public Health, Immunization Program.



Background

In 2010, the Advisory Committee on Immunization Practices (ACIP) first recommended annual influenza vaccination for all persons aged ≥ 6 months in the United States. Publicly funded influenza vaccine from the California Department of Public Health and vaccine purchased by LAC are distributed by the Los Angeles County Immunization Program (LACIP) to public clinics and community and free clinics who agree to hold public clinics. All other healthcare providers must purchase vaccine directly from the vaccine manufacturer for their patients and these data are not available.

Methods

Collected Data

In addition to injectable vaccine LAC distributed intranasal influenza vaccine. Intranasal vaccine is licensed for use only in healthy, non-pregnant persons aged 2 through 49 years.

Participating healthcare providers immunize persons either in their clinic or during outreach programs (i.e., non-healthcare settings).

Vaccine availability and the number of doses of vaccine used by the provider in previous years determine the amount of influenza vaccine each healthcare provider receives from LACIP.

Summary data provided by California Immunization Registry (CAIR) for in-house vaccine administration.

For vaccine administered in an outreach setting, vaccine accountability forms were distributed to each healthcare provider administering publicly funded vaccine. The following data were collected on the forms:

- Healthcare provider name and Service Planning Area (SPA).
- Whether vaccine was administered at the in-house clinic or as an outreach activity.
- Date of vaccine administration.
- Age, ethnicity, presence of medical conditions, and pregnancy status of vaccine recipient for every dose administered.

Summary

- Total Influenza Doses = 90,805

Vaccinated Clients' Race and Ethnicity Highlights

Race and ethnicity data is only available for Public Health Outreach Clinics for the 2010 – 2011 influenza campaign.

- Hispanic vaccine recipients made up the majority (15,167 doses [41%]) of the population receiving influenza vaccine at Public Health Outreach Clinics. This is consistent with previous years. Blacks and American Indian / Alaskan Native (AI/AN) received the smallest proportions of vaccine administered during clinics.
- The percentage of flu doses administered to Whites has continued to decline in the past 6 seasons (See Figure 2) from 38% to 21% and Asian / Pacific Islander recipients, as a percentage of total doses, is trending upward over time (Figure 2) from 18% to 29%.

Vaccinated Clients' Age Highlights

Age distribution data is only available for Public Health Outreach Clinics for the 2010 – 2011 influenza campaign.

- Recipients 60 years and older, as a percentage of total doses, continued to decrease (See Figure 3) from 63% to 32% and recipients 19 to 49 years of age, as a percentage of total doses, continues to trend upward over time (Figure 3) from 18% to 34%.
- The 2010 – 2011 influenza campaign is the first campaign where recipients 19 to 49 years of age accounted for the largest proportion (12,409 doses [33.5%]) receiving vaccine, followed closely by recipients 60 years and older with 31.7% (11,753 doses) of vaccine administered in outreach settings.

Location of Vaccination Clinics Service Planning Area (SPA) Highlights

The amount of vaccine administered in each SPA is determined by the location of the provider administering the vaccine, not the residence of the vaccine recipients.

- For SPAs 1, 3, 5, 6, and 8 the proportion of the total influenza vaccine administered during the 2010-2011 campaign compared to the average of previous campaigns has remained approximately the same (See Figure 4). SPA 1: Average 3% and 5% for current year. SPA 3: Average 22% and 25% for current year. SPA 5: Average 5% and 6% for current year. SPA 6: Average 7% and 8% for current year. SPA 8: Average 11% and 11% for current year.
- SPA 2 and SPA 7 (Figure 4) experienced a decrease in their proportion of the total influenza vaccine administered during the 2010-2011 campaign compared to the average of previous campaigns (average of 24% compared to 16% for the current year and average of 11% compared to 8% for the current year respectively). SPA 4 experienced an increase in their proportion of the total influenza vaccine administered during the 2010-2011 campaign compared to the average of previous campaigns (average of 16% compared to 22% for the current year).
- 8,275 doses of intranasal vaccine were administered during the 2010 – 2011 influenza campaign (See Figure 1). The majority of the intranasal vaccine (6,073) was administered by Public Health Outreach providers. Of the 6,073 doses, 1,134 (18.7%) were provided by a single provider – Antelope Valley Health Center.

Vaccinated Clients' Medical And Pregnancy Highlights

Medical condition and pregnancy information is only available for Public Health Outreach Clinics for the 2010 – 2011 influenza campaign.

- Of the 43,876 influenza doses administered 13.3% (5,857 doses) were given to those with self reported medical conditions (Heart, lung, kidney, liver or neurological disease; cancer; diabetes; blood disorder; immune system disorder). SPA efforts to reach high risk clients were similar across all SPAs (13% \pm 2% of administered influenza doses).
- Of the 43,876 influenza doses administered 57.2% (25,097 doses) were given to females Of the 25,097 influenza doses administered to females, 0.6% (144 doses) indicated that they were pregnant.

Results

- I. Publicly-Funded Influenza Doses (Inactivated and Live) Administered During the 2010-2011 Influenza Season, by Service Planning Area (SPA).
- II. Administration of intranasal influenza vaccine during the 2010-2011 campaign, by provider type
- III. Ethnic distribution of persons receiving influenza vaccine from public health outreach clinics.
- IV. Age distribution of persons receiving influenza vaccine from public health outreach clinics.
- V. Proportion of total influenza vaccine administered in each SPA, by campaign year.

Publicly-Funded Influenza Doses (Inactivated and Live)
Administered During the 2010-2011 Influenza Season, by Service Planning Area (SPA)

SPA	Clinic Type	Flu Doses Administered (%)	0 – 18 Years Of Age (%)	19 + Years Of Age (%)
TOTAL	Public Health Outreach	37,039 (41%)	6,236 (32%)	30,803 (43%)
	Public Health In-House	11,453 (12%)	3,486 (18%)	7,967 (11%)
	Department of Health Services (DHS)/Comprehensive Health Centers (CHC)	10,119 (11%)	1,717 (9%)	8,402 (12%)
	School Based Clinics Vaccines For Children (VFC)	2,319 (3%)	1,656 (8%)	663 (1%)
	Community Health Provider	29,875 (33%)	6,631 (33%)	23,244 (33%)
	TOTAL		90,805	19,726
1	Public Health Outreach	3,085 (66%)	904 (57%)	2,181 (72%)
	Public Health In-House	1,051 (23%)	511 (32%)	540 (18%)
	DHS/CHC	- (0%)	- (0%)	- (0%)
	School Based Clinics VFC	235 (5%)	17 (1%)	218 (7%)
	Community Health Provider	268 (6%)	162 (10%)	106 (3%)
	SPA TOTAL		4,639	1,594
2	Public Health Outreach	5,555 (39%)	1,157 (39%)	4,398 (39%)
	Public Health In-House	2,010 (14%)	644 (21%)	1,366 (12%)
	DHS/CHC	850 (6%)	844 (28%)	6 (0%)
	School Based Clinics VFC	- (0%)	- (0%)	- (0%)
	Community Health Provider	5,853 (41%)	350 (12%)	5,503 (49%)
	SPA TOTAL		14,268	2,995
3	Public Health Outreach	8,517 (38%)	1,338 (23%)	7,179 (44%)
	Public Health In-House	2,770 (12%)	687 (11%)	2,083 (13%)
	DHS/CHC	4,686 (21%)	687 (11%)	3,999 (24%)
	School Based Clinics VFC	1,245 (6%)	1,087 (18%)	158 (1%)
	Community Health Provider	5,252 (23%)	2,213 (37%)	3,039 (18%)
	SPA TOTAL		22,470	6,012
4	Public Health Outreach	7,490 (37%)	931 (20%)	6,559 (42%)
	Public Health In-House	2,030 (10%)	437 (10%)	1,593 (10%)
	DHS/CHC	- (0%)	- (0%)	- (0%)
	School Based Clinics VFC	839 (4%)	552 (12%)	287 (2%)
	Community Health Provider	9,832 (49%)	2,659 (58%)	7,173 (46%)
	SPA TOTAL		20,191	4,579



Publicly-Funded Influenza Doses (Inactivated and Live)
Administered During the 2010-2011 Influenza Season, by Service Planning Area (SPA)

SPA	Clinic Type	Flu Doses Administered (%)*	0 – 18 Years Of Age	19 + Years Of Age
5	Public Health Outreach	1,584 (30%)	154 (38%)	1,430 (30%)
	Public Health In-House	- (0%)	- (0%)	- (0%)
	DHS/CHC	- (0%)	- (0%)	- (0%)
	School Based Clinics VFC	- (0%)	- (0%)	- (0%)
	Community Health Provider	3,620 (70%)	251 (62%)	3,369 (70%)
	SPA TOTAL	5,204	405	4,799
6	Public Health Outreach	3,845 (53%)	769 (43%)	3,076 (57%)
	Public Health In-House	1,294 (18%)	490 (27%)	804 (15%)
	DHS/CHC	- (0%)	- (0%)	- (0%)
	School Based Clinics VFC	- (0%)	- (0%)	- (0%)
	Community Health Provider	2,068 (29%)	537 (30%)	1,531 (28%)
	SPA TOTAL	7,207	1,796	5,411
7	Public Health Outreach	3,399 (48%)	554 (50%)	2,845 (48%)
	Public Health In-House	700 (10%)	246 (22%)	454 (7%)
	DHS/CHC	830 (12%)	60 (6%)	770 (13%)
	School Based Clinics VFC	- (0%)	- (0%)	- (0%)
	Community Health Provider	2,132 (30%)	246 (22%)	1,886 (32%)
	SPA TOTAL	7,061	1,106	5,955
8	Public Health Outreach	3,564 (37%)	429 (35%)	3,135 (37%)
	Public Health In-House	1,598 (16%)	471 (38%)	1,127 (13%)
	DHS/CHC	3,753 (38%)	126 (10%)	3,627 (43%)
	School Based Clinics VFC	- (0%)	- (0%)	- (0%)
	Community Health Provider	850 (9%)	213 (17%)	637 (7%)
	SPA TOTAL	9,765	1,239	8,526

Data cell notation of '-' indicates clinic type did not administer vaccine.

Public Health and CHC in-house data are maintained and abstracted from the California Immunization Registry.

Public Health and CHC outreach data are maintained and abstracted from the FormTran SQL database.



Figure 1. Administration of intranasal influenza vaccine during the 2010-2011 campaign, by provider type (n=8,275).

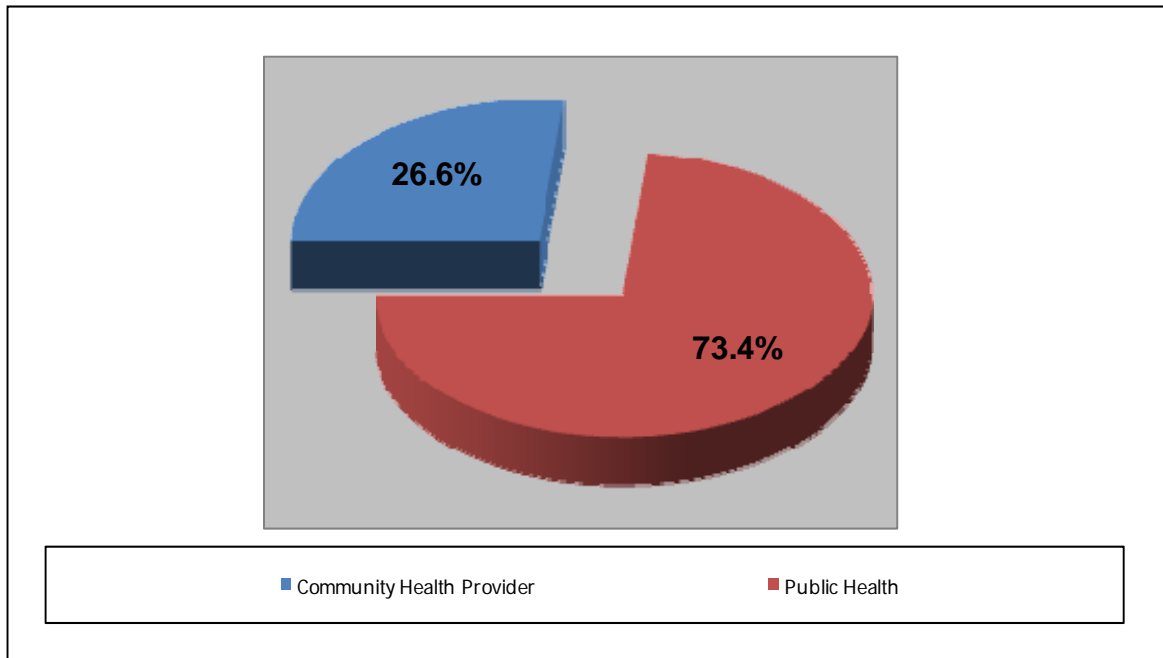


Figure 2. Ethnic distribution of persons receiving influenza vaccine from public health outreach clinics.

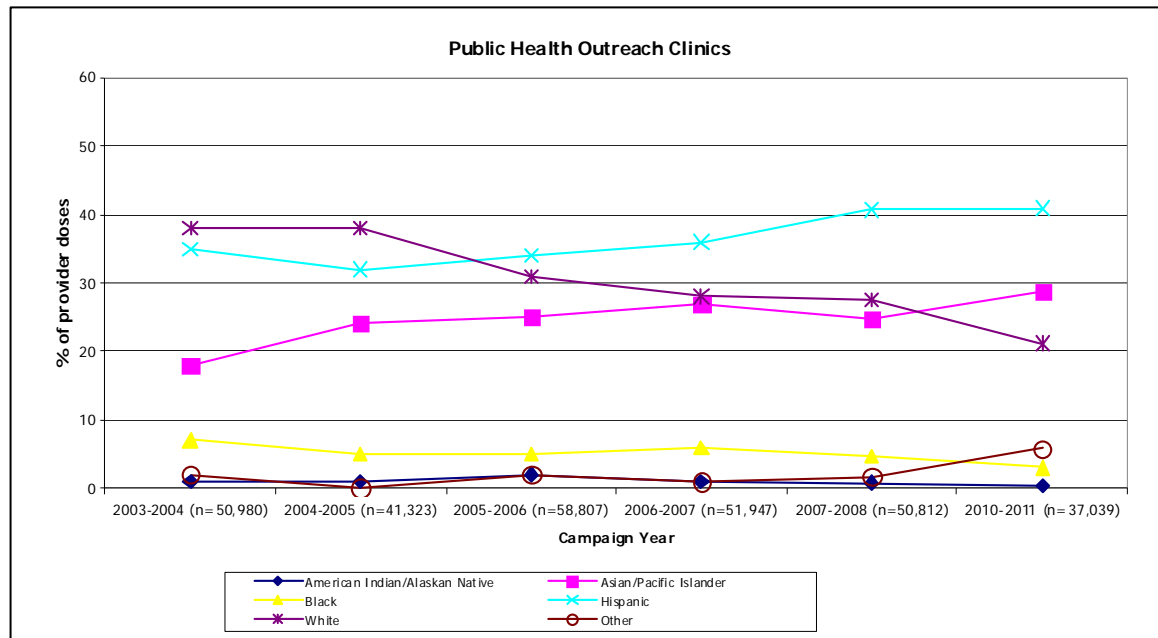


Figure 3. Age distribution of persons receiving influenza vaccine from public health outreach.

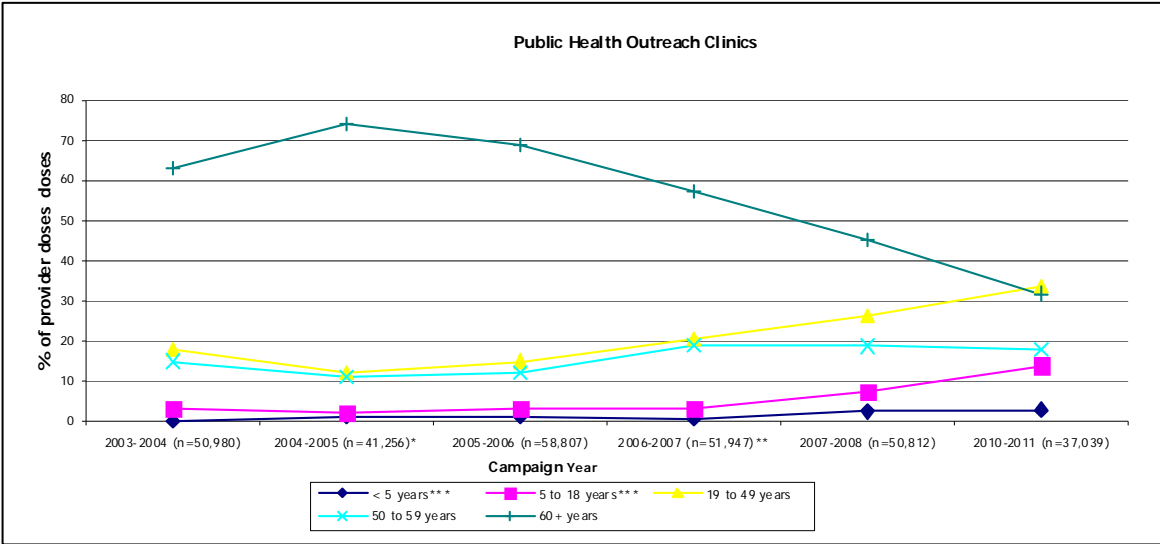
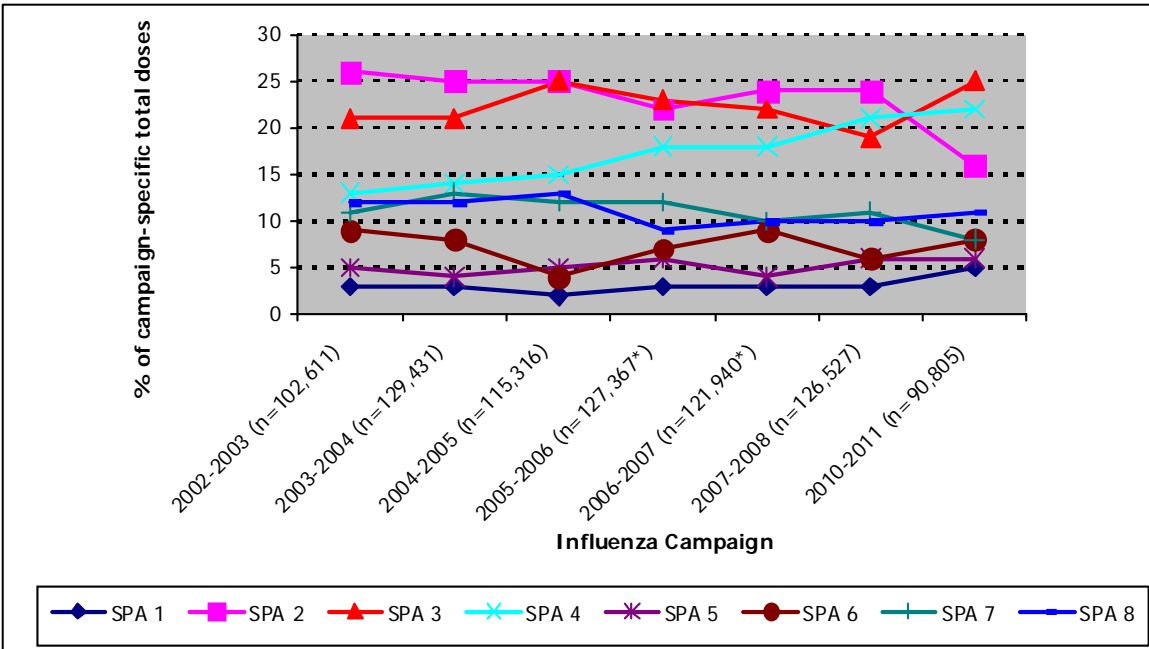


Figure 4. Proportion of total influenza vaccine administered in each SPA, by campaign year.



*Total doses for 2005-2006 and 2006-2007 do not include non-Los Angeles County Health Departments.