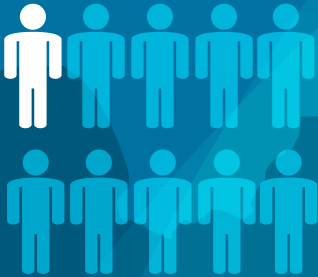


Los Angeles County

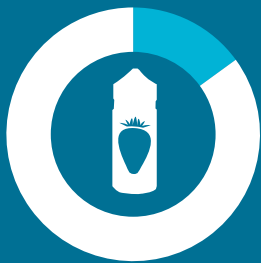
Tobacco Use among High School Students

At a glance



1 in 10

high school students are current **e-cigarette users**



83%

current tobacco users reported using a **flavored tobacco product**

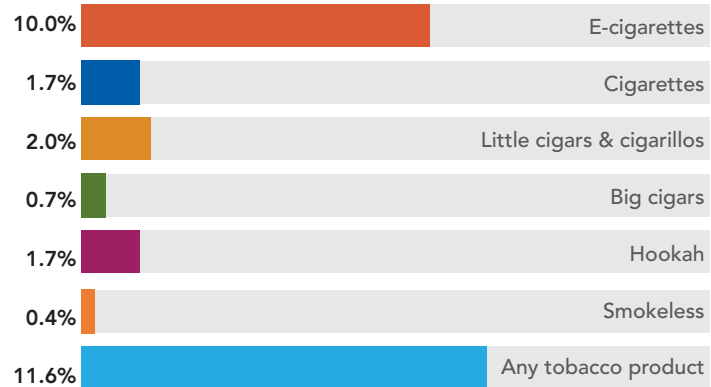


61%

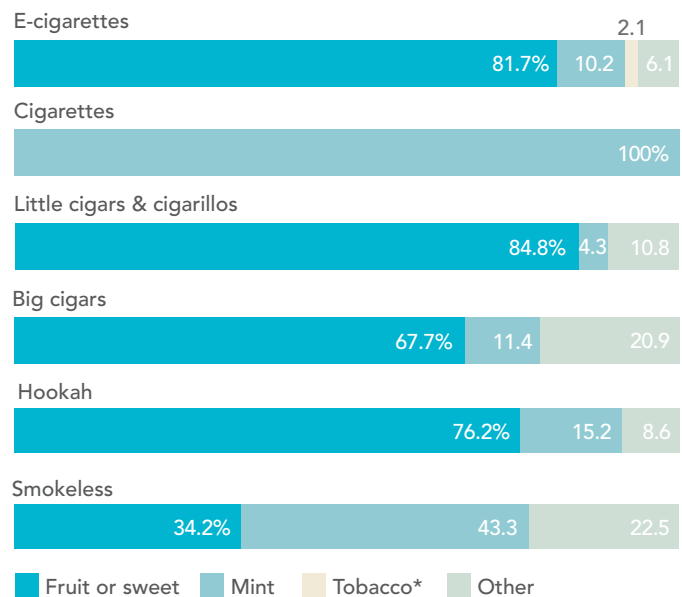
current e-cig users bought e-cigarettes from **vape shops**

- The cigarette smoking prevalence for high school students in Los Angeles County has reached a historical low (1.7%).
- E-cigarettes were the most commonly used tobacco product among high school students in Los Angeles County.
- The majority of current tobacco users reported using a flavored tobacco product.
- Flavored tobacco product use was high across all genders, races/ethnicities, and grades.
- Fruit or sweet was the most popular reported flavor for most tobacco products.

Prevalence of Current Use of Tobacco Products by High School Students

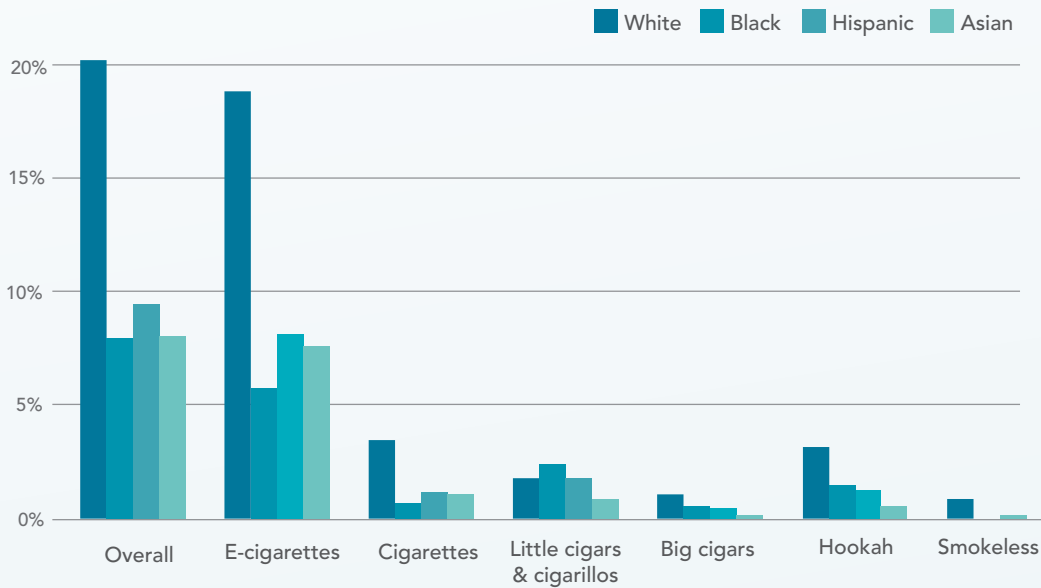


Proportion using Flavored Tobacco Products by Flavor Type

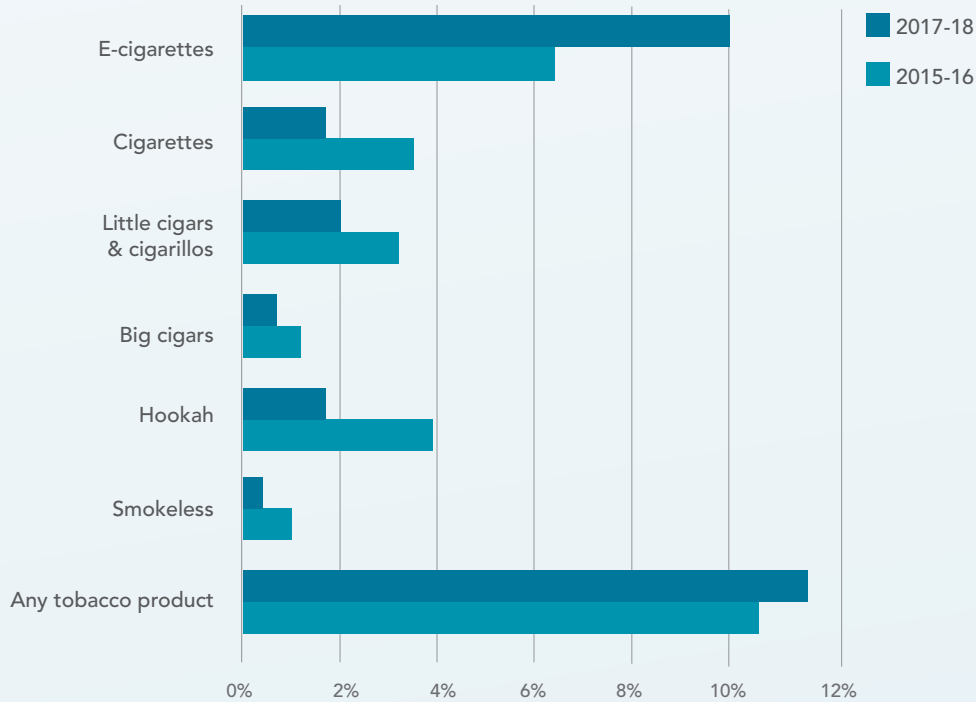


*Tobacco was only included as a flavor option for e-cigarettes.

Prevalence of Current Tobacco Product Use by Ethnicity



Prevalence of Current Tobacco Product Use by Survey Cycle



Source: Zhu S-H, Zhuang YL, Lee J, Cole A, Braden K, Wolfson T, Gamst A (2019). *Tobacco use among high school students in Los Angeles County: Findings from the 2017-18 California Student Tobacco Study*. San Diego, California: Center for Research and Intervention in Tobacco Control (CRITC), University of California, San Diego.

© 2019. California Department of Public Health. Funded under contract #CTCP-17-19.