



Lung Disease and Countertops

What You Should Know about Silicosis

How Artificial Stone Countertops Cause Silicosis

These products are a popular choice due to their durability and affordability. However, workers who are cutting, chipping, drilling, or grinding artificial stone slabs can be exposed to high levels of silica dust when not using adequate respiratory protection and required safety protocols to limit dust exposure.

Visit worksafelywithsilica.org for more information on safe work practices.

Silicosis is preventable. YOU CAN HELP!

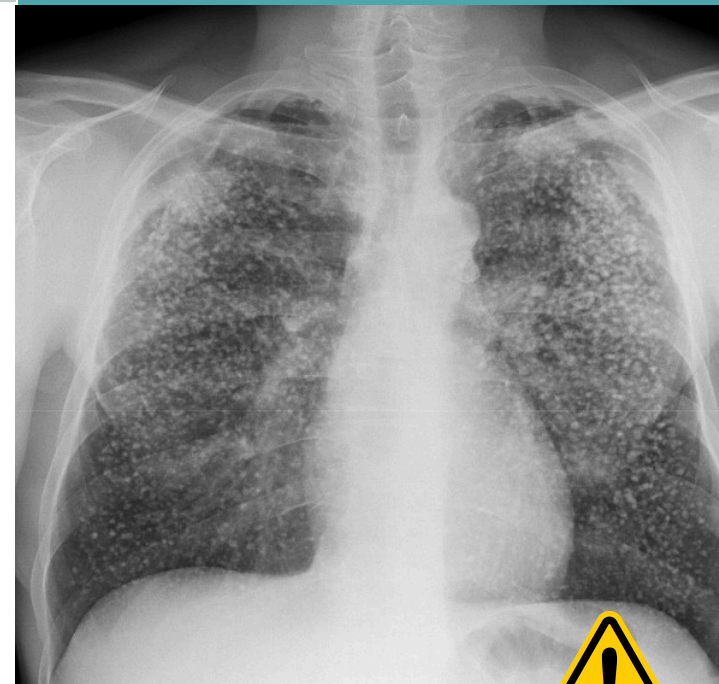
- Help raise awareness by sharing this information with your family and friends. Visit the websites below to learn more about silicosis and safe handling practices.
- Ask your contractor about low silica alternatives and the safety precautions they're using when working with artificial stone and how they are protecting fabricators from silica dust exposure.



ph.lacounty.gov/silicosis



worksafewithsilica.org



Dust from artificial stone
countertops may cause
lung disease in workers.

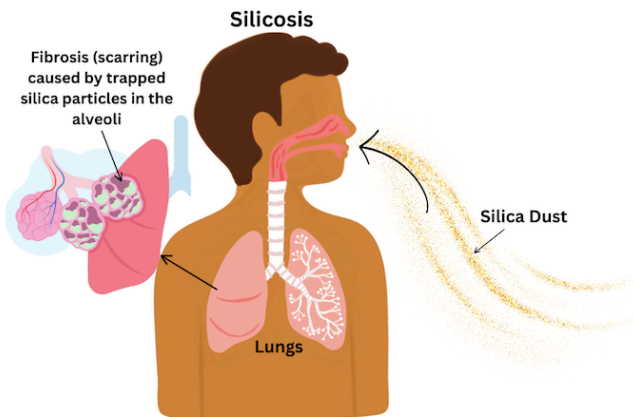


COUNTY OF LOS ANGELES
Public Health

Silicosis

What is silicosis?

- Occupational lung disease
- Caused by breathing in silica dust
- Symptoms: Cough, fatigue, trouble breathing
- Incurable and can be deadly
- May require lung transplant
- On average may take 10-20 years to develop symptoms
- Completely preventable



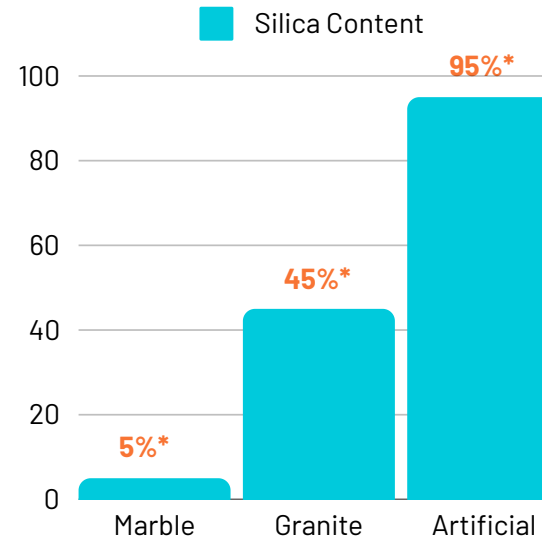
"Silicosis is a death sentence. Previously healthy people suffocate to death from an entirely preventable disease often leaving family and children behind."

- Jane Fazio MD, Pulmonary and Critical Care physician who has treated nearly 100 patients with silicosis since 2019.

Silica Content in Natural vs. Artificial Stone

All natural stone contains silica. Stones like marble and granite could be considered a safer alternative because they contain lower levels of silica.

Artificial stone is primarily made of quartz, which naturally contains high levels of silica. When crushed and combined with polymer resins and dyes to create the artificial stone slabs, they can contain up to 95% silica.



*These percentages are estimates, please consult the product's safety data sheet for silica content and safe handling instructions.

Why should you care?

Many people may not know that artificial stone, a popular choice for countertop remodels, is contributing to a health crisis among the workers who cut and fabricate countertops. Many of these workers are being diagnosed with silicosis, an incurable but preventable lung disease.

You can make informed choices by encouraging contractors and countertop fabricators to use safe practices, and by selecting countertops with a low silica content.

Please note, once the product is installed, it poses no known health threat to consumers.

