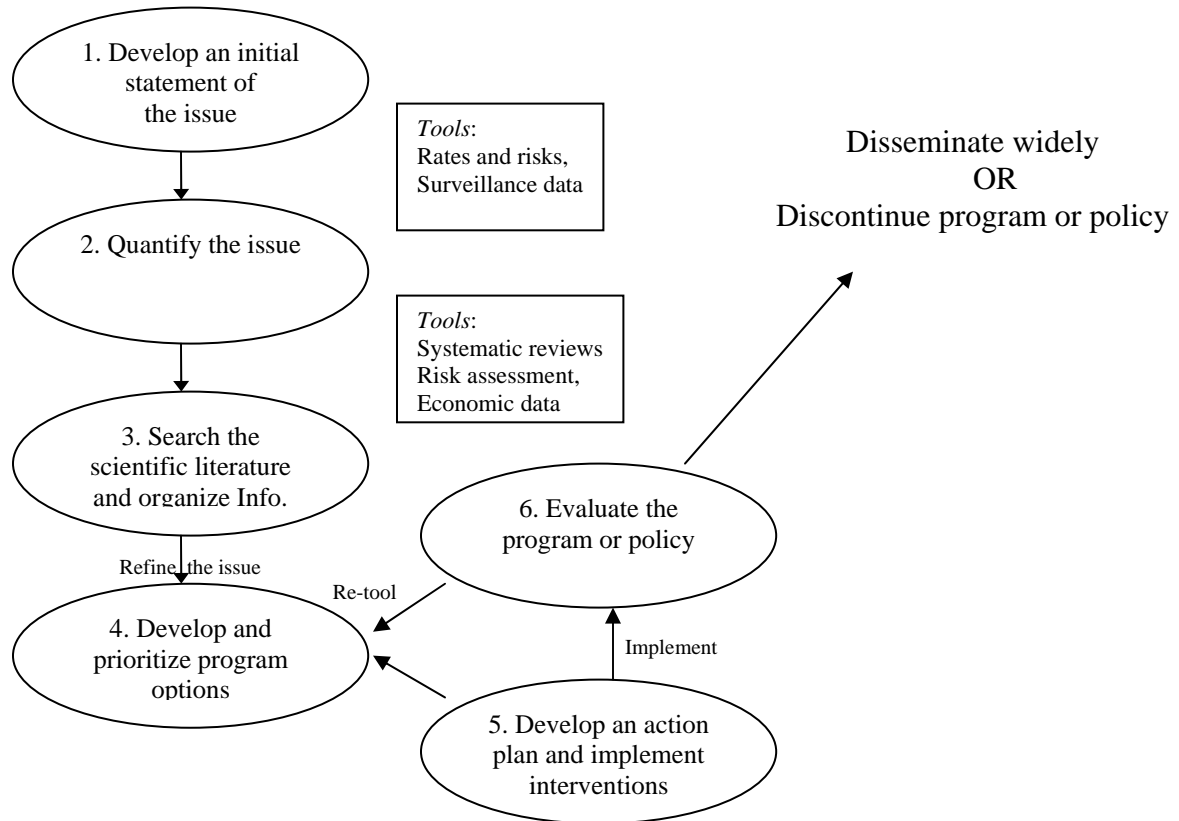


# Evidence-Based Public Health

## A Sequential Framework for Enhancing Evidence-Based Public Health



## A Sequential Framework for Understanding the Key Steps in Developing an Issue Statement

	<i>What?</i>	<i>What &amp; Why?</i>	<i>How?</i>
Issue Statement Component	Background / Epidemiologic Data	Questions About the Program or Policy	<i>Solutions Being Considered</i>
Sample Questions to Consider	What do the data show? What are the time trends? Are there high-risk populations? Can the data be oriented by person, place, and time? Is public health action warranted?	What might explain the data being seen? Why is the problem being addressed? Are there effective (and cost-effective) interventions? What happens if we do nothing? Do we need more information?	Which options are under active construction? How does one gain stakeholder input? Are resources available for various options?

Figures from: Brownson RC, Baker EA, Leet TL, and Gillespie KN. *Evidence-Based Public Health*. Oxford University Press, New York, NY, 2003: p.88.