

Public Health Accreditation Update

Quality Improvement Summit

Donna Sze, MPH

Accreditation Manager

Los Angeles County Department of Public Health

February 2016





Public Health ACCREDITATION

Public Health Accreditation Board

Accreditation Process

Nov 2014

1. Pre-Application



June 2015

2. Application

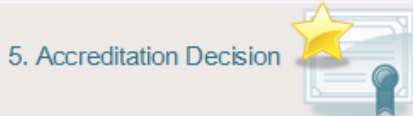


Dec 2015

3. Documentation Selection & Submission



4. Site Visit



5. Accreditation Decision



6. Annual Reports



7. Reaccreditation (every 5 years)

12 Domains

Documents selected and submitted address these public health functions and activities:

1. Assess

Conduct and disseminate assessments focused on population health status and public health issues facing the community



2. Investigate

Investigate health problems and environmental public health hazards to protect the community



3. Inform & Educate

Inform and educate about public health issues and functions



4. Community Engagement

Engage with the community to identify and address health problems



5. Policies & Plans

Develop public health policies and plans



6. Public Health Laws

Enforce public health laws



7. Access to Care

Promote strategies to improve access to health care



8. Workforce

Maintain a competent public health workforce



9. Quality Improvement

Evaluate and continuously improve processes, programs, and interventions



10. Evidence-Based Practices

Contribute to and apply the evidence base of public health



11. Administration & Management

Maintain administrative and management capacity



12. Governance

Maintain capacity to engage the public health governing entity



The “HEAT” Map – April 2014

Domain 1	Domain 2	Domain 3	Domain 4	Domain 5	Domain 6	Domain 7	Domain 8	Domain 9	Domain 10	Domain 11	Domain 12
1.1.1 L	2.1.1 A	3.1.1 A	4.1.1 A	5.1.1 A	6.1.1 A	7.1.1 A	8.1.1 L	9.1.1 A	10.1.1 A	11.1.1 A	12.1.1 A
1.1.2 L	2.1.2 L	3.1.2 A	4.1.2 L	5.1.2 A	6.1.2 A	7.1.2 A	8.2.1 A	9.1.2 A	10.2.1 A	11.1.2 A	12.1.2 A
1.1.3 A	2.1.3 A	3.1.3 A	4.2.1 A	5.1.3 A	6.2.1 A	7.1.3 A	8.2.2 A	9.1.3 A	10.2.2. A	11.1.3 A	12.2.1 A
1.2.1 A	2.1.4 A	3.2.1 A	4.2.2 A	5.2.1 L	6.2.2 A	7.2.1 A	8.2.3 A	9.1.4 A	10.2.3 A	11.1.4 A	12.3.1 A
1.2.2 A	2.1.5 A	3.2.2 A		5.2.2 L	6.2.3 A	7.2.2 A	8.2.4 A	9.1.5 A		11.1.5 A	12.3.2 A
1.2.3 A	2.2.1 A	3.2.3 A		5.2.3 A	6.3.1 A	7.2.3 A		9.2.1 A		11.1.6 A	12.3.3 A
1.2.4 L	2.2.2 A	3.2.4 A		5.2.4 A	6.3.2 A			9.2.2 A		11.1.7 A	
1.3.1 A	2.2.3 A	3.2.5 A		5.3.1 A	6.3.3 A					11.2.1 A	
1.3.2 L	2.3.1 A	3.2.6 A		5.3.2 A	6.3.4 A					11.2.2. A	
1.4.1 A	2.3.2 A			5.3.3 A	6.3.5 A					11.2.3 A	
1.4.2 L	2.3.3 A			5.4.1 A						11.2.4 A	
	2.3.4 A			5.4.2 A							
	2.4.1 A										
	2.4.2 A										
	2.4.3 A										

Documentation Identified

Documentation Collection In Progress

Documentation Not Yet Identified

The “HEAT” Map – June 2014

Domain 1	Domain 2	Domain 3	Domain 4	Domain 5	Domain 6	Domain 7	Domain 8	Domain 9	Domain 10	Domain 11	Domain 12
1.1.1 L	2.1.1 A	3.1.1 A	4.1.1 A	5.1.1 A	6.1.1 A	7.1.1 A	8.1.1 L	9.1.1 A	10.1.1 A	11.1.1 A	12.1.1 A
1.1.2 L	2.1.2 L	3.1.2 A	4.1.2 L	5.1.2 A	6.1.2 A	7.1.2 A	8.2.1 A	9.1.2 A	10.2.1 A	11.1.2 A	12.1.2 A
1.1.3 A	2.1.3 A	3.1.3 A	4.2.1 A	5.1.3 A	6.2.1 A	7.1.3 A	8.2.2 A	9.1.3 A	10.2.2. A	11.1.3 A	12.2.1 A
1.2.1 A	2.1.4 A	3.2.1 A	4.2.2 A	5.2.1 L	6.2.2 A	7.2.1 A	8.2.3 A	9.1.4 A	10.2.3 A	11.1.4 A	12.3.1 A
1.2.2 A	2.1.5 A	3.2.2 A		5.2.2 L	6.2.3 A	7.2.2 A	8.2.4 A	9.1.5 A		11.1.5 A	12.3.2 A
1.2.3 A	2.2.1 A	3.2.3 A		5.2.3 A	6.3.1 A	7.2.3 A		9.2.1 A		11.1.6 A	12.3.3 A
1.2.4 L	2.2.2 A	3.2.4 A		5.2.4 A	6.3.2 A			9.2.2 A		11.1.7 A	
1.3.1 A	2.2.3 A	3.2.5 A		5.3.1 A	6.3.3 A					11.2.1 A	
1.3.2 L	2.3.1 A	3.2.6 A		5.3.2 A	6.3.4 A					11.2.2. A	
1.4.1 A	2.3.2 A			5.3.3 A	6.3.5 A					11.2.3 A	
1.4.2 L	2.3.3 A			5.4.1 A						11.2.4 A	
	2.3.4 A			5.4.2 A							
	2.4.1 A										
	2.4.2 A										
	2.4.3 A										

Documentation Identified	Documentation Collection In Progress	Documentation Not Yet Identified
--------------------------	--------------------------------------	----------------------------------

The “HEAT” Map – August 2014

Domain 1	Domain 2	Domain 3	Domain 4	Domain 5	Domain 6	Domain 7	Domain 8	Domain 9	Domain 10	Domain 11	Domain 12
1.1.1 L	2.1.1 A	3.1.1 A	4.1.1 A	5.1.1 A	6.1.1 A	7.1.1 A	8.1.1 L	9.1.1 A	10.1.1 A	11.1.1 A	12.1.1 A
1.1.2 L	2.1.2 L	3.1.2 A	4.1.2 L	5.1.2 A	6.1.2 A	7.1.2 A	8.2.1 A	9.1.2 A	10.2.1 A	11.1.2 A	12.1.2 A
1.1.3 A	2.1.3 A	3.1.3 A	4.2.1 A	5.1.3 A	6.2.1 A	7.1.3 A	8.2.2 A	9.1.3 A	10.2.2 A	11.1.3 A	12.2.1 A
1.2.1 A	2.1.4 A	3.2.1 A	4.2.2 A	5.2.1 L	6.2.2 A	7.2.1 A	8.2.3 A	9.1.4 A	10.2.3 A	11.1.4 A	12.3.1 A
1.2.2 A	2.1.5 A	3.2.2 A		5.2.2 L	6.2.3 A	7.2.2 A	8.2.4 A	9.1.5 A		11.1.5 A	12.3.2 A
1.2.3 A	2.2.1 A	3.2.3 A		5.2.3 A	6.3.1 A	7.2.3 A		9.2.1 A		11.1.6 A	12.3.3 A
1.2.4 L	2.2.2 A	3.2.4 A		5.2.4 A	6.3.2 A			9.2.2 A		11.1.7 A	
1.3.1 A	2.2.3 A	3.2.5 A		5.3.1 A	6.3.3 A					11.2.1 A	
1.3.2 L	2.3.1 A	3.2.6 A		5.3.2 A	6.3.4 A					11.2.2 A	
1.4.1 A	2.3.2 A			5.3.3 A	6.3.5 A					11.2.3 A	
1.4.2 L	2.3.3 A			5.4.1 A						11.2.4 A	
	2.3.4 A			5.4.2 A							
	2.4.1 A										
	2.4.2 A										
	2.4.3 A										

Documentation Identified	Documentation Collection In Progress	Documentation Not Yet Identified
--------------------------	--------------------------------------	----------------------------------

The “HEAT” Map – October 2014

Domain 1	Domain 2	Domain 3	Domain 4	Domain 5	Domain 6	Domain 7	Domain 8	Domain 9	Domain 10	Domain 11	Domain 12
1.1.1 L	2.1.1 A	3.1.1 A	4.1.1 A	5.1.1 A	6.1.1 A	7.1.1 A	8.1.1 L	9.1.1 A	10.1.1 A	11.1.1 A	12.1.1 A
1.1.2 L	2.1.2 L	3.1.2 A	4.1.2 L	5.1.2 A	6.1.2 A	7.1.2 A	8.2.1 A	9.1.2 A	10.2.1 A	11.1.2 A	12.1.2 A
1.1.3 A	2.1.3 A	3.1.3 A	4.2.1 A	5.1.3 A	6.2.1 A	7.1.3 A	8.2.2 A	9.1.3 A	10.2.2 A	11.1.3 A	12.2.1 A
1.2.1 A	2.1.4 A	3.2.1 A	4.2.2 A	5.2.1 L	6.2.2 A	7.2.1 A	8.2.3 A	9.1.4 A	10.2.3 A	11.1.4 A	12.3.1 A
1.2.2 A	2.1.5 A	3.2.2 A		5.2.2 L	6.2.3 A	7.2.2 A	8.2.4 A	9.1.5 A		11.1.5 A	12.3.2 A
1.2.3 A	2.2.1 A	3.2.3 A		5.2.3 A	6.3.1 A	7.2.3 A		9.2.1 A		11.1.6 A	12.3.3 A
1.2.4 L	2.2.2 A	3.2.4 A		5.2.4 A	6.3.2 A			9.2.2 A		11.1.7 A	
1.3.1 A	2.2.3 A	3.2.5 A		5.3.1 A	6.3.3 A					11.2.1 A	
1.3.2 L	2.3.1 A	3.2.6 A		5.3.2 A	6.3.4 A					11.2.2 A	
1.4.1 A	2.3.2 A			5.3.3 A	6.3.5 A					11.2.3 A	
1.4.2 L	2.3.3 A			5.4.1 A						11.2.4 A	
	2.3.4 A			5.4.2 A							
	2.4.1 A										
	2.4.2 A										
	2.4.3 A										

Documentation Identified	Documentation Collection In Progress	Documentation Not Yet Identified
--------------------------	--------------------------------------	----------------------------------

The “HEAT” Map – December 2014

Domain 1	Domain 2	Domain 3	Domain 4	Domain 5	Domain 6	Domain 7	Domain 8	Domain 9	Domain 10	Domain 11	Domain 12
1.1.1 L	2.1.1 A	3.1.1 A	4.1.1 A	5.1.1 A	6.1.1 A	7.1.1 A	8.1.1 L	9.1.1 A	10.1.1 A	11.1.1 A	12.1.1 A
1.1.2 L	2.1.2 L	3.1.2 A	4.1.2 L	5.1.2 A	6.1.2 A	7.1.2 A	8.2.1 A	9.1.2 A	10.2.1 A	11.1.2 A	12.1.2 A
1.1.3 A	2.1.3 A	3.1.3 A	4.2.1 A	5.1.3 A	6.2.1 A	7.1.3 A	8.2.2 A	9.1.3 A	10.2.2. A	11.1.3 A	12.2.1 A
1.2.1 A	2.1.4 A	3.2.1 A	4.2.2 A	5.2.1 L	6.2.2 A	7.2.1 A	8.2.3 A	9.1.4 A	10.2.3 A	11.1.4 A	12.3.1 A
1.2.2 A	2.1.5 A	3.2.2 A		5.2.2 L	6.2.3 A	7.2.2 A	8.2.4 A	9.1.5 A		11.1.5 A	12.3.2 A
1.2.3 A	2.2.1 A	3.2.3 A		5.2.3 A	6.3.1 A	7.2.3 A		9.2.1 A		11.1.6 A	12.3.3 A
1.2.4 L	2.2.2 A	3.2.4 A		5.2.4 A	6.3.2 A			9.2.2 A		11.1.7 A	
1.3.1 A	2.2.3 A	3.2.5 A		5.3.1 A	6.3.3 A					11.2.1 A	
1.3.2 L	2.3.1 A	3.2.6 A		5.3.2 A	6.3.4 A					11.2.2. A	
1.4.1 A	2.3.2 A			5.3.3 A	6.3.5 A					11.2.3 A	
1.4.2 L	2.3.3 A			5.4.1 A						11.2.4 A	
	2.3.4 A			5.4.2 A							
	2.4.1 A										
	2.4.2 A										
	2.4.3 A										

Documentation Identified

Documentation Collection In Progress

Documentation Not Yet Identified

The “HEAT” Map – February 2015

Domain 1	Domain 2	Domain 3	Domain 4	Domain 5	Domain 6	Domain 7	Domain 8	Domain 9	Domain 10	Domain 11	Domain 12
1.1.1 L*	2.1.1 A	3.1.1 A	4.1.1 A	5.1.1 A	6.1.1 A	7.1.1 A	8.1.1 L	9.1.1 A	10.1.1 A	11.1.1 A	12.1.1 A
1.1.2 L*	2.1.2 L	3.1.2 A	4.1.2 L	5.1.2 A	6.1.2 A	7.1.2 A	8.2.1 A	9.1.2 A	10.2.1 A	11.1.2 A	12.1.2 A
1.1.3 A*	2.1.3 A	3.1.3 A	4.2.1 A	5.1.3 A	6.2.1 A	7.1.3 A	8.2.2 A	9.1.3 A	10.2.2 A	11.1.3 A	12.2.1 A
1.2.1 A	2.1.4 A	3.2.1 A	4.2.2 A	5.2.1 L*	6.2.2 A	7.2.1 A	8.2.3 A	9.1.4 A	10.2.3 A	11.1.4 A	12.3.1 A
1.2.2 A	2.1.5 A	3.2.2 A		5.2.2 L*	6.2.3 A	7.2.2 A	8.2.4 A	9.1.5 A		11.1.5 A	12.3.2 A
1.2.3 A	2.2.1 A	3.2.3 A		5.2.3 A*	6.3.1 A	7.2.3 A		9.2.1 A		11.1.6 A	12.3.3 A
1.2.4 L	2.2.2 A	3.2.4 A		5.2.4 A*	6.3.2 A			9.2.2 A		11.1.7 A	
1.3.1 A	2.2.3 A	3.2.5 A		5.3.1 A*	6.3.3 A					11.2.1 A	
1.3.2 L	2.3.1 A	3.2.6 A		5.3.2 A*	6.3.4 A					11.2.2 A	
1.4.1 A	2.3.2 A			5.3.3 A*	6.3.5 A					11.2.3 A	
1.4.2 L	2.3.3 A			5.4.1 A						11.2.4 A	
	2.3.4 A			5.4.2 A							
	2.4.1 A										
	2.4.2 A										
	2.4.3 A										

Documentation Identified	Documentation Collection In Progress	Documentation Not Yet Identified
--------------------------	--------------------------------------	----------------------------------

The “HEAT” Map – April 2015

Domain 1	Domain 2	Domain 3	Domain 4	Domain 5	Domain 6	Domain 7	Domain 8	Domain 9	Domain 10	Domain 11	Domain 12
1.1.1 L*	2.1.1 A	3.1.1 A	4.1.1 A	5.1.1 A	6.1.1 A	7.1.1 A	8.1.1 L	9.1.1 A	10.1.1 A	11.1.1 A	12.1.1 A
1.1.2 L*	2.1.2 L	3.1.2 A	4.1.2 L	5.1.2 A	6.1.2 A	7.1.2 A	8.2.1 A	9.1.2 A	10.2.1 A	11.1.2 A	12.1.2 A
1.1.3 A*	2.1.3 A	3.1.3 A	4.2.1 A	5.1.3 A	6.2.1 A	7.1.3 A	8.2.2 A	9.1.3 A	10.2.2 A	11.1.3 A	12.2.1 A
1.2.1 A	2.1.4 A	3.2.1 A	4.2.2 A	5.2.1 L*	6.2.2 A	7.2.1 A	8.2.3 A	9.1.4 A	10.2.3 A	11.1.4 A	12.3.1 A
1.2.2 A	2.1.5 A	3.2.2 A		5.2.2 L*	6.2.3 A	7.2.2 A	8.2.4 A	9.1.5 A		11.1.5 A	12.3.2 A
1.2.3 A	2.2.1 A	3.2.3 A		5.2.3 A*	6.3.1 A	7.2.3 A		9.2.1 A		11.1.6 A	12.3.3 A
1.2.4 L	2.2.2 A	3.2.4 A		5.2.4 A*	6.3.2 A			9.2.2 A		11.1.7 A	
1.3.1 A	2.2.3 A	3.2.5 A		5.3.1 A*	6.3.3 A					11.2.1 A	
1.3.2 L	2.3.1 A	3.2.6 A		5.3.2 A*	6.3.4 A					11.2.2 A	
1.4.1 A	2.3.2 A			5.3.3 A*	6.3.5 A					11.2.3 A	
1.4.2 L	2.3.3 A			5.4.1 A						11.2.4 A	
	2.3.4 A			5.4.2 A							
	2.4.1 A										
	2.4.2 A										
	2.4.3 A										

Documentation Identified	Documentation Collection In Progress	Documentation Not Yet Identified
--------------------------	--------------------------------------	----------------------------------

The “HEAT” Map – June 2015

Domain 1	Domain 2	Domain 3	Domain 4	Domain 5	Domain 6	Domain 7	Domain 8	Domain 9	Domain 10	Domain 11	Domain 12
1.1.1 L*	2.1.1 A	3.1.1 A	4.1.1 A	5.1.1 A	6.1.1 A	7.1.1 A	8.1.1 L	9.1.1 A	10.1.1 A	11.1.1 A	12.1.1 A
1.1.2 L*	2.1.2 L	3.1.2 A	4.1.2 L	5.1.2 A	6.1.2 A	7.1.2 A	8.2.1 A	9.1.2 A	10.2.1 A	11.1.2 A	12.1.2 A
1.1.3 A*	2.1.3 A	3.1.3 A	4.2.1 A	5.1.3 A	6.2.1 A	7.1.3 A	8.2.2 A	9.1.3 A	10.2.2 A	11.1.3 A	12.2.1 A
1.2.1 A	2.1.4 A	3.2.1 A	4.2.2 A	5.2.1 L*	6.2.2 A	7.2.1 A	8.2.3 A	9.1.4 A	10.2.3 A	11.1.4 A	12.3.1 A
1.2.2 A	2.1.5 A	3.2.2 A		5.2.2 L*	6.2.3 A	7.2.2 A	8.2.4 A	9.1.5 A		11.1.5 A	12.3.2 A
1.2.3 A	2.2.1 A	3.2.3 A		5.2.3 A*	6.3.1 A	7.2.3 A		9.2.1 A		11.1.6 A	12.3.3 A
1.2.4 L	2.2.2 A	3.2.4 A		5.2.4 A*	6.3.2 A			9.2.2 A		11.1.7 A	
1.3.1 A	2.2.3 A	3.2.5 A		5.3.1 A*	6.3.3 A					11.2.1 A	
1.3.2 L	2.3.1 A	3.2.6 A		5.3.2 A*	6.3.4 A					11.2.2 A	
1.4.1 A	2.3.2 A			5.3.3 A*	6.3.5 A					11.2.3 A	
1.4.2 L	2.3.3 A			5.4.1 A						11.2.4 A	
	2.3.4 A			5.4.2 A							
	2.4.1 A										
	2.4.2 A										
	2.4.3 A										

Documentation Identified

Documentation Collection In Progress

Documentation Not Yet Identified

The “HEAT” Map – August 2015

Domain 1	Domain 2	Domain 3	Domain 4	Domain 5	Domain 6	Domain 7	Domain 8	Domain 9	Domain 10	Domain 11	Domain 12
1.1.1 L*	2.1.1 A	3.1.1 A	4.1.1 A	5.1.1 A	6.1.1 A	7.1.1 A	8.1.1 L	9.1.1 A	10.1.1 A	11.1.1 A	12.1.1 A
1.1.2 L*	2.1.2 L	3.1.2 A	4.1.2 L	5.1.2 A	6.1.2 A	7.1.2 A	8.2.1 A	9.1.2 A	10.2.1 A	11.1.2 A	12.1.2 A
1.1.3 A*	2.1.3 A	3.1.3 A	4.2.1 A	5.1.3 A	6.2.1 A	7.1.3 A	8.2.2 A	9.1.3 A	10.2.2. A	11.1.3 A	12.2.1 A
1.2.1 A	2.1.4 A	3.2.1 A	4.2.2 A	5.2.1 L*	6.2.2 A	7.2.1 A	8.2.3 A	9.1.4 A	10.2.3 A	11.1.4 A	12.3.1 A
1.2.2 A	2.1.5 A	3.2.2 A		5.2.2 L*	6.2.3 A	7.2.2 A	8.2.4 A	9.1.5 A		11.1.5 A	12.3.2 A
1.2.3 A	2.2.1 A	3.2.3 A		5.2.3 A*	6.3.1 A	7.2.3 A		9.2.1 A		11.1.6 A	12.3.3 A
1.2.4 L	2.2.2 A	3.2.4 A		5.2.4 A*	6.3.2 A			9.2.2 A		11.1.7 A	
1.3.1 A	2.2.3 A	3.2.5 A		5.3.1 A*	6.3.3 A					11.2.1 A	
1.3.2 L	2.3.1 A	3.2.6 A		5.3.2 A*	6.3.4 A					11.2.2. A	
1.4.1 A	2.3.2 A			5.3.3 A*	6.3.5 A					11.2.3 A	
1.4.2 L	2.3.3 A			5.4.1 A						11.2.4 A	
	2.3.4 A			5.4.2 A							
	2.4.1 A										
	2.4.2 A										
	2.4.3 A										

Documentation Identified

Documentation Collection In Progress

Documentation Not Yet Identified

The “HEAT” Map – October 2015

Domain 1	Domain 2	Domain 3	Domain 4	Domain 5	Domain 6	Domain 7	Domain 8	Domain 9	Domain 10	Domain 11	Domain 12
1.1.1 L*	2.1.1 A	3.1.1 A	4.1.1 A	5.1.1 A	6.1.1 A	7.1.1 A	8.1.1 L	9.1.1 A	10.1.1 A	11.1.1 A	12.1.1 A
1.1.2 L*	2.1.2 L	3.1.2 A	4.1.2 L	5.1.2 A	6.1.2 A	7.1.2 A	8.2.1 A	9.1.2 A	10.2.1 A	11.1.2 A	12.1.2 A
1.1.3 A*	2.1.3 A	3.1.3 A	4.2.1 A	5.1.3 A	6.2.1 A	7.1.3 A	8.2.2 A	9.1.3 A	10.2.2. A	11.1.3 A	12.2.1 A
1.2.1 A	2.1.4 A	3.2.1 A	4.2.2 A	5.2.1 L*	6.2.2 A	7.2.1 A	8.2.3 A	9.1.4 A	10.2.3 A	11.1.4 A	12.3.1 A
1.2.2 A	2.1.5 A	3.2.2 A		5.2.2 L*	6.2.3 A	7.2.2 A	8.2.4 A	9.1.5 A		11.1.5 A	12.3.2 A
1.2.3 A	2.2.1 A	3.2.3 A		5.2.3 A*	6.3.1 A	7.2.3 A		9.2.1 A		11.1.6 A	12.3.3 A
1.2.4 L	2.2.2 A	3.2.4 A		5.2.4 A*	6.3.2 A			9.2.2 A		11.1.7 A	
1.3.1 A	2.2.3 A	3.2.5 A		5.3.1 A*	6.3.3 A					11.2.1 A	
1.3.2 L	2.3.1 A	3.2.6 A		5.3.2 A*	6.3.4 A					11.2.2. A	
1.4.1 A	2.3.2 A			5.3.3 A*	6.3.5 A					11.2.3 A	
1.4.2 L	2.3.3 A			5.4.1 A						11.2.4 A	
	2.3.4 A			5.4.2 A							
	2.4.1 A										
	2.4.2 A										
	2.4.3 A										

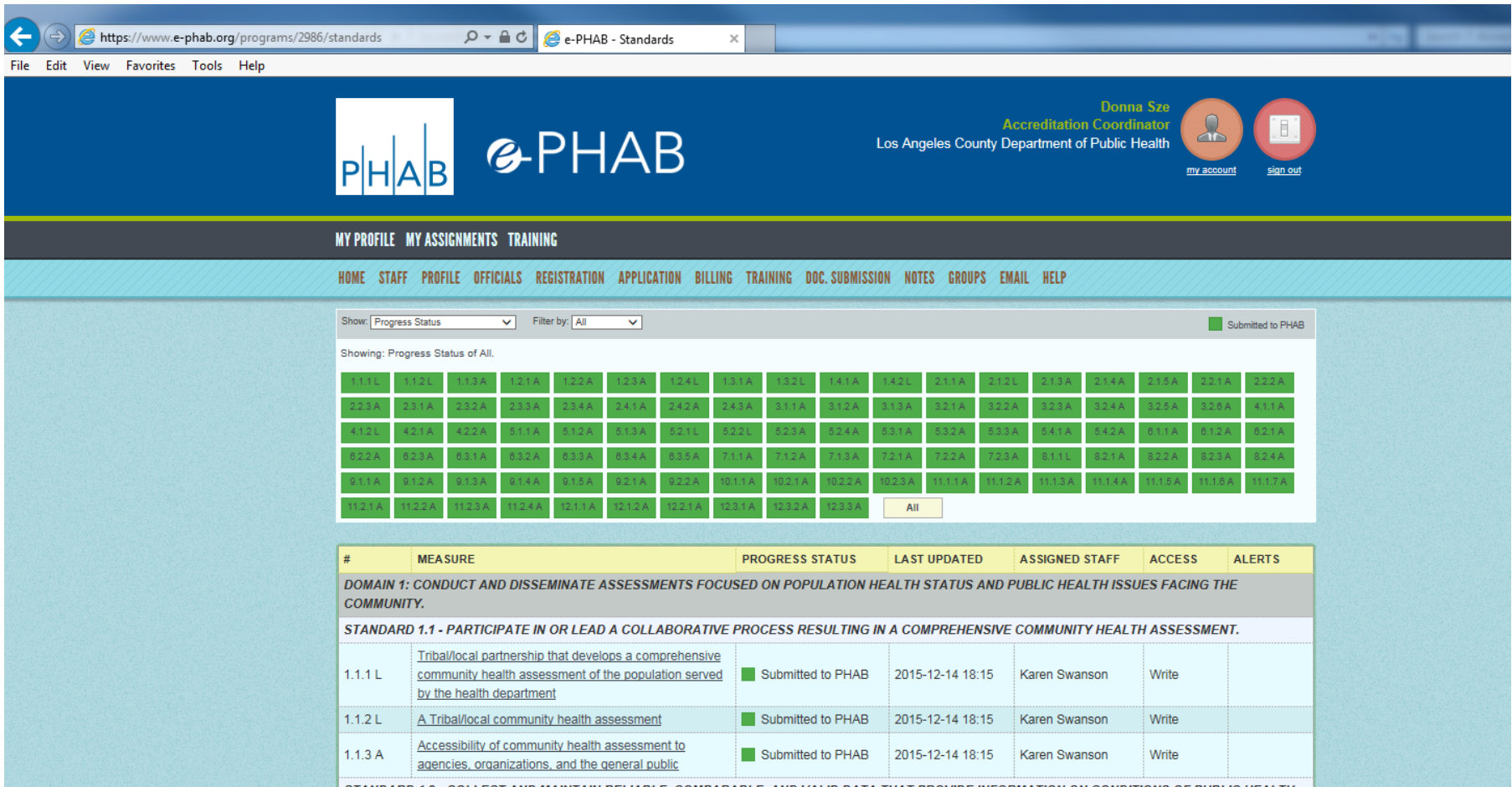
Documentation Identified	Documentation Collection In Progress	Documentation Not Yet Identified
--------------------------	--------------------------------------	----------------------------------

The “HEAT” Map – December 2015

Domain 1	Domain 2	Domain 3	Domain 4	Domain 5	Domain 6	Domain 7	Domain 8	Domain 9	Domain 10	Domain 11	Domain 12
1.1.1 L*	2.1.1 A	3.1.1 A	4.1.1 A	5.1.1 A	6.1.1 A	7.1.1 A	8.1.1 L	9.1.1 A	10.1.1 A	11.1.1 A	12.1.1 A
1.1.2 L*	2.1.2 L	3.1.2 A	4.1.2 L	5.1.2 A	6.1.2 A	7.1.2 A	8.2.1 A	9.1.2 A	10.2.1 A	11.1.2 A	12.1.2 A
1.1.3 A*	2.1.3 A	3.1.3 A	4.2.1 A	5.1.3 A	6.2.1 A	7.1.3 A	8.2.2 A	9.1.3 A	10.2.2. A	11.1.3 A	12.2.1 A
1.2.1 A	2.1.4 A	3.2.1 A	4.2.2 A	5.2.1 L*	6.2.2 A	7.2.1 A	8.2.3 A	9.1.4 A	10.2.3 A	11.1.4 A	12.3.1 A
1.2.2 A	2.1.5 A	3.2.2 A		5.2.2 L*	6.2.3 A	7.2.2 A	8.2.4 A	9.1.5 A		11.1.5 A	12.3.2 A
1.2.3 A	2.2.1 A	3.2.3 A		5.2.3 A*	6.3.1 A	7.2.3 A		9.2.1 A		11.1.6 A	12.3.3 A
1.2.4 L	2.2.2 A	3.2.4 A		5.2.4 A*	6.3.2 A			9.2.2 A		11.1.7 A	
1.3.1 A	2.2.3 A	3.2.5 A		5.3.1 A*	6.3.3 A					11.2.1 A	
1.3.2 L	2.3.1 A	3.2.6 A		5.3.2 A*	6.3.4 A					11.2.2. A	
1.4.1 A	2.3.2 A			5.3.3 A*	6.3.5 A					11.2.3 A	
1.4.2 L	2.3.3 A			5.4.1 A						11.2.4 A	
	2.3.4 A			5.4.2 A							
	2.4.1 A										
	2.4.2 A										
	2.4.3 A										

Documentation Identified	Documentation Collection In Progress	Documentation Not Yet Identified
--------------------------	--------------------------------------	----------------------------------

Submitted on December 14, 2015



Browser: <https://www.e-phab.org/programs/2986/standards> | e-PHAB - Standards

PHAB | e-PHAB | Donna Sze, Accreditation Coordinator, Los Angeles County Department of Public Health

MY PROFILE | MY ASSIGNMENTS | TRAINING

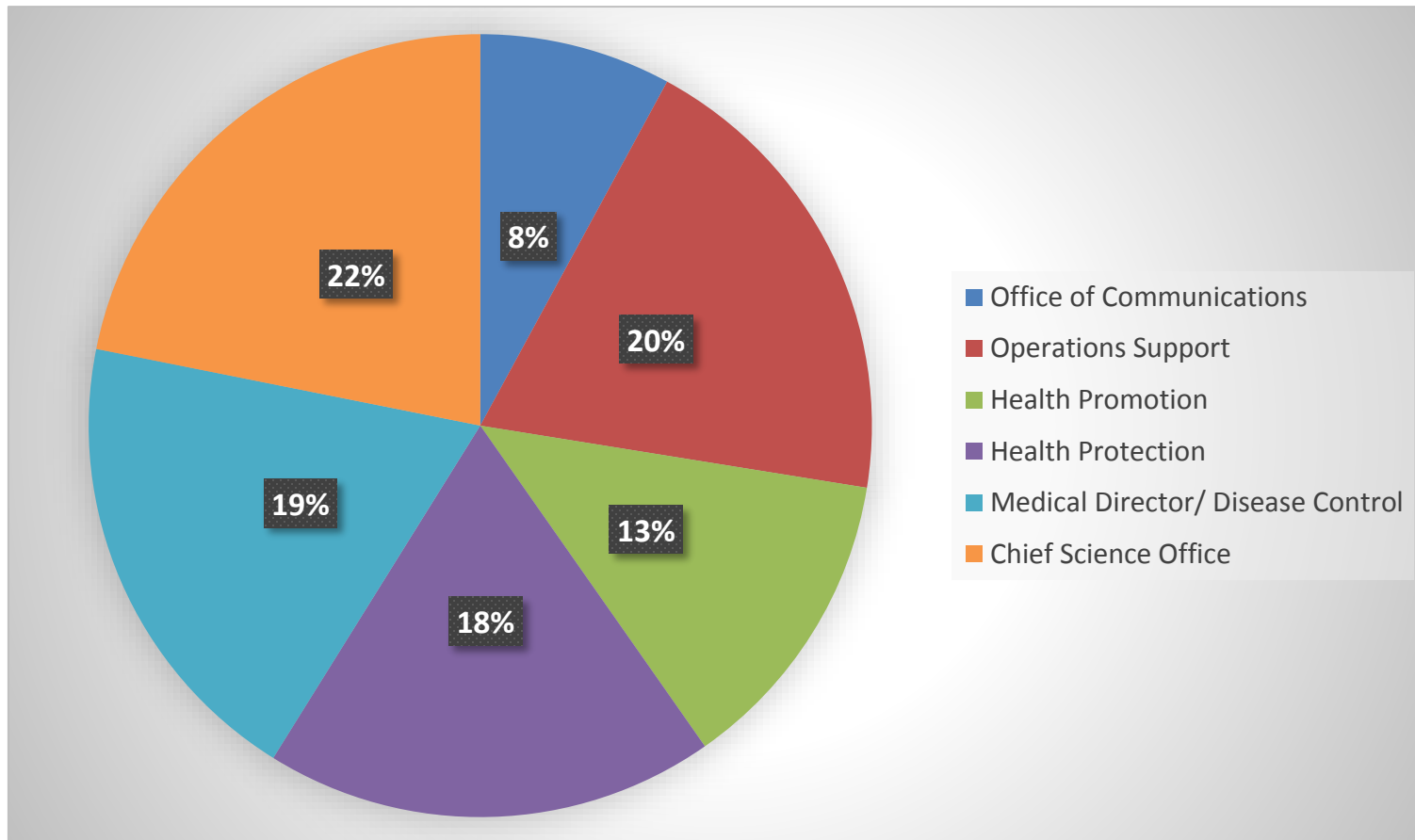
HOME | STAFF | PROFILE | OFFICIALS | REGISTRATION | APPLICATION | BILLING | TRAINING | DOC.SUBMISSION | NOTES | GROUPS | EMAIL | HELP

Show: Progress Status | Filter by: All | Submitted to PHAB

Showing: Progress Status of All.

#	MEASURE	PROGRESS STATUS	LAST UPDATED	ASSIGNED STAFF	ACCESS	ALERTS
DOMAIN 1: CONDUCT AND DISSEMINATE ASSESSMENTS FOCUSED ON POPULATION HEALTH STATUS AND PUBLIC HEALTH ISSUES FACING THE COMMUNITY.						
STANDARD 1.1 - PARTICIPATE IN OR LEAD A COLLABORATIVE PROCESS RESULTING IN A COMPREHENSIVE COMMUNITY HEALTH ASSESSMENT.						
1.1.1 L	Tribal/local partnership that develops a comprehensive community health assessment of the population served by the health department	Submitted to PHAB	2015-12-14 18:15	Karen Swanson	Write	
1.1.2 L	A Tribal/local community health assessment	Submitted to PHAB	2015-12-14 18:15	Karen Swanson	Write	
1.1.3 A	Accessibility of community health assessment to agencies, organizations, and the general public	Submitted to PHAB	2015-12-14 18:15	Karen Swanson	Write	
STANDARD 1.2 - COLLECT AND MAINTAIN RELIABLE, COMPARABLE, AND VALID DATA THAT PROVIDE INFORMATION ON CONDITIONS OF PUBLIC HEALTH						

Examples/Documents by DPH Bureaus



Internal Document Review Process



1st Review:

PI Team & staff
volunteers
(17 teams)

2nd Review:

Domain Champions
(17+ staff)

Final Review/Approval



Public Health ACCREDITATION

Public Health Accreditation Board Accreditation Process

1. Pre-Application



2. Application



3. Documentation Selection & Submission



4. Site Visit



5. Accreditation Decision



6. Annual Reports



7. Reaccreditation
(every 5 years)



12 Domains

Documents selected and submitted address these public health functions and activities:

1. Assess

Conduct and disseminate assessments focused on population health status and public health issues facing the community



2. Investigate

Investigate health problems and environmental public health hazards to protect the community



3. Inform & Educate

Inform and educate about public health issues and functions



4. Community Engagement

Engage with the community to identify and address health problems



5. Policies & Plans

Develop public health policies and plans



6. Public Health Laws

Enforce public health laws



7. Access to Care

Promote strategies to improve access to health care



8. Workforce

Maintain a competent public health workforce



9. Quality Improvement

Evaluate and continuously improve processes, programs, and interventions



10. Evidence-Based Practices

Contribute to and apply the evidence base of public health



11. Administration & Management

Maintain administrative and management capacity



12. Governance

Maintain capacity to engage the public health governing entity



QID 10/ 2014

Next Steps for DPH

Submit documents to PHAB ✓

PHAB conducts initial review

Site visitors review documents

Site visit

**(PHAB) Accreditation Committee
makes a decision** (quarterly meeting)

PHAB's Site Visit Team



- Consists of 3-4 members representing PHAB
- The site visitors are:
 - volunteers
 - staff from other public health departments
 - from similar geographic regions and health departments with similar characteristics (if possible)

Purpose of the Site Visit

The site visit allows the reviewers to supplement their document review with observations and interviews



Site Visit - General Agenda and Logistics

Site visits typically lasts 2-3 days

- Entrance Conference
- Walk-Through of Facilities
- Pre-requisite Interviews (CHA, CHIP, Strategic Plan)
- Domain Interviews
- Interview with Governing Entity
- Interview with Community Members
- Exit Conference



Getting Ready for the Site Visit

- Identify site visit participants
- Review documents submitted to PHAB
- Preparation meetings with the Community members, Governing Entity (representatives), and staff
- Mock site visit (dress rehearsal)



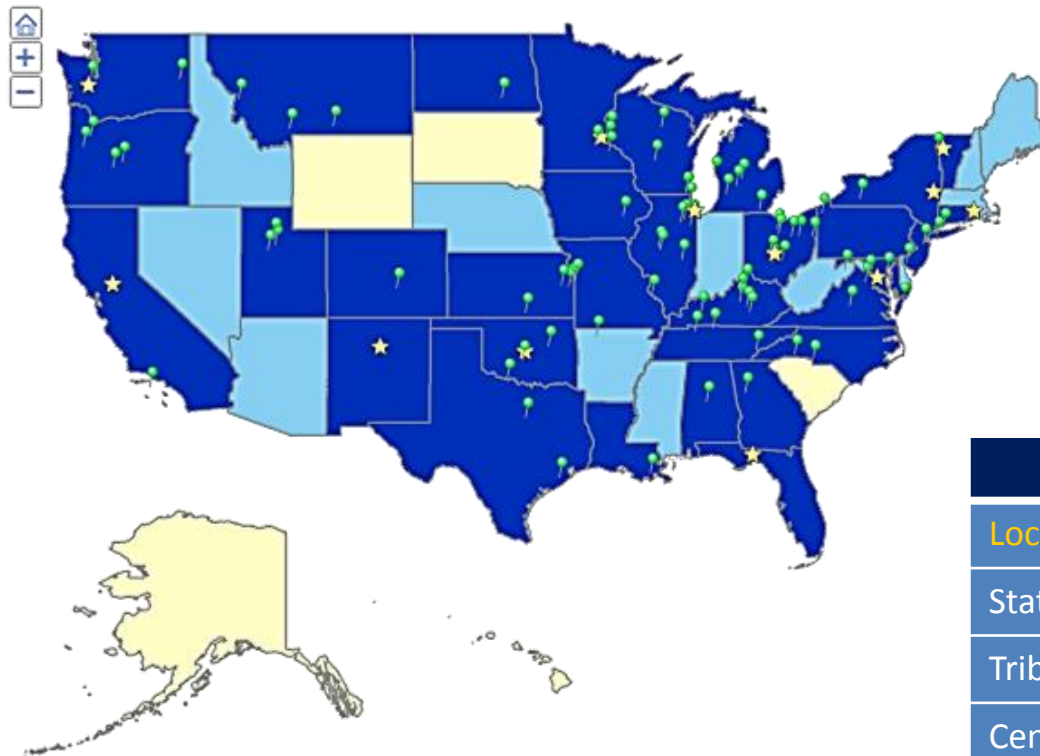
After the Site Visit

- The Site Visitors will develop a report (within 2 weeks)
- The report will discuss strengths, opportunities for improvement, & overall impression of the health department
- The report will be used by the Accreditation Committee to determine the health department's accreditation status

After Accreditation, What's Next?

- Review PHAB Site Visit Report
- Focus on QI/PI opportunities
- Annual Reports to PHAB

Accredited Public Health Departments (February 2016)



★ Accredited State HD 📍 Accredited Local HD
■ States with Accredited HDs ■ States with HDs in Progress

	Accredited	In Progress
Local	84	158
State	12	21
Tribal	-	4
Centralized States Integrated System	-	67
Multi-Jurisdictional	-	8
Total # of Accredited Health Departments	96	258

Examples of Documents Submitted to PHAB



Public Health Accreditation Board
Accreditation Process

1. Pre-Application 
2. Application 
3. Documentation Selection & Submission 
4. Site Visit 
5. Accreditation Decision 
6. Annual Reports 
7. Reaccreditation (every 5 years) 

Public Health ACCREDITATION

12 Domains

Documents selected and submitted address these public health functions and activities:

<p>1. Assess Conduct and disseminate assessments focused on population health status and public health issues facing the community</p> 	<p>2. Investigate Investigate health problems and environmental public health hazards to protect the community</p> 	<p>3. Inform & Educate Inform and educate about public health issues and functions</p> 	<p>4. Community Engagement Engage with the community to identify and address health problems</p> 
<p>5. Policies & Plans Develop public health policies and plans</p> 	<p>6. Public Health Laws Enforce public health laws</p> 	<p>7. Access to Care Promote strategies to improve access to health care</p> 	<p>8. Workforce Maintain a competent public health workforce</p> 
<p>9. Quality Improvement Evaluate and continuously improve processes, programs, and interventions</p> 	<p>10. Evidence-Based Practices Contribute to and apply the evidence base of public health</p> 	<p>11. Administration & Management Maintain administrative and management capacity</p> 	<p>12. Governance Maintain capacity to engage the public health governing entity</p> 

Examples of Documents Submitted to PHAB



Public Health Accreditation Board
Accreditation Process

1. Pre-Application 
2. Application 
3. Documentation Selection & Submission 
4. Site Visit 
5. Accreditation Decision 
6. Annual Reports 
7. Reaccreditation (every 5 years) 

Public Health ACCREDITATION

12 Domains

Documents selected and submitted address these public health functions and activities:

<p>1. Assess Conduct and disseminate assessments focused on population health status and public health issues facing the community</p>  <p style="text-align: right; font-size: 24px; color: red;">12</p>	<p>2. Investigate Investigate health problems and environmental public health hazards to protect the community</p>  <p style="text-align: right; font-size: 24px; color: red;">5</p>	<p>3. Inform & Educate Inform and educate about public health issues and functions</p>  <p style="text-align: right; font-size: 24px; color: red;">1</p>	<p>4. Community Engagement Engage with the community to identify and address health problems</p>  <p style="text-align: right; font-size: 24px; color: red;">11</p>
<p>5. Policies & Plans Develop public health policies and plans</p>  <p style="text-align: right; font-size: 24px; color: red;">6</p>	<p>6. Public Health Laws Enforce public health laws</p>  <p style="text-align: right; font-size: 24px; color: red;">2</p>	<p>7. Access to Care Promote strategies to improve access to health care</p>  <p style="text-align: right; font-size: 24px; color: red;">10</p>	<p>8. Workforce Maintain a competent public health workforce</p>  <p style="text-align: right; font-size: 24px; color: red;">7</p>
<p>9. Quality Improvement Evaluate and continuously improve processes, programs, and interventions</p>  <p style="text-align: right; font-size: 24px; color: red;">3</p>	<p>10. Evidence-Based Practices Contribute to and apply the evidence base of public health</p>  <p style="text-align: right; font-size: 24px; color: red;">9</p>	<p>11. Administration & Management Maintain administrative and management capacity</p>  <p style="text-align: right; font-size: 24px; color: red;">8</p>	<p>12. Governance Maintain capacity to engage the public health governing entity</p>  <p style="text-align: right; font-size: 24px; color: red;">4</p>

QID 10/ 2014

Questions?

