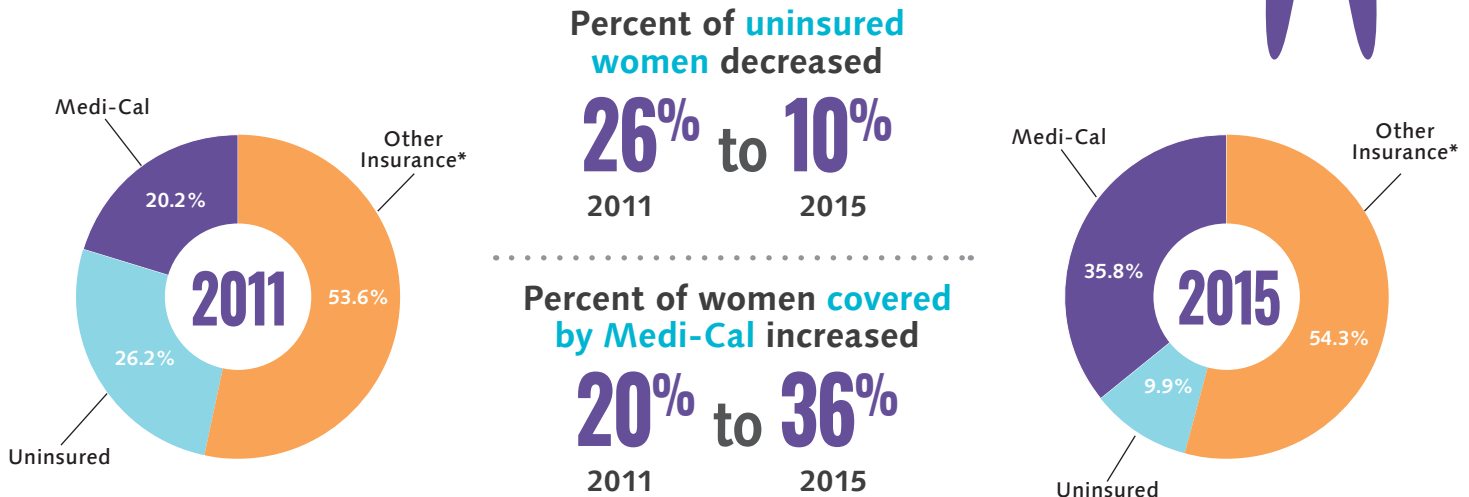
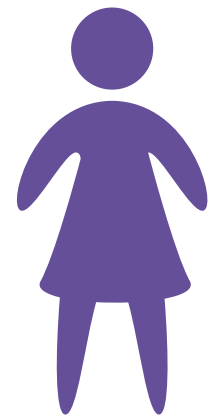


HEALTH CARE COVERAGE AND ACCESS FOR LA COUNTY WOMEN

Health insurance coverage for women ages 18-64 years improved substantially from 2011 to 2015.



Over **80%** of the **639,000 newly insured women** gained coverage through Medi-Cal, demonstrating the significant impact of Medi-Cal Expansion.

*Other includes Private, Medicare, or insurance purchased through Covered CA



Percent of women who report difficulty accessing medical care decreased

31% to 24%
2011 2015



Percent of women with no regular source of care stayed the same

17% to 16%
2011 2015



18% of women (18-64 years) with less than a high school education
14% of Latinas (18-64 years) are still **uninsured**

To protect the health of the most vulnerable populations, concerted efforts should be made to preserve and improve the current health insurance coverage rates and scope of services under the Affordable Care Act and Medi-Cal expansion.

Source: LA County Health Survey, 2011, 2015

January 2018