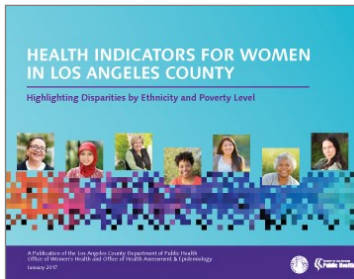


~ NOTES ~

Please stop by the Resource Table



Pick up additional copies of the Los Angeles County Department of Public Health's latest data reports:

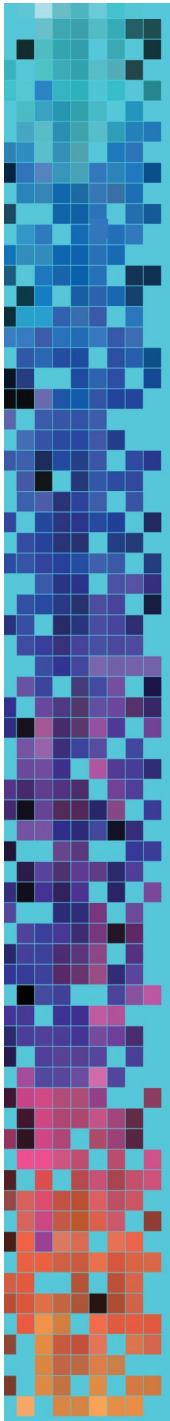
- *Health Indicators for Women in Los Angeles County* (at left)
- *Key Indicators of Health by Service Planning Area*

**Los Angeles County Department of Public Health
Office of Women's Health**

www.publichealth.lacounty.gov/owh

Main (626) 569-3850

Multilingual Hotline (800) 793-8090



The Los Angeles County Department of Public Health
Office of Women's Health
Presents a Community Dialogue

Creating Healthy Communities:
Using Data to Advance Women's Health

Tuesday, March 21, 2017
12 noon – 4:30 pm

St. Anne's Conference Center
155 N Occidental Blvd
Los Angeles CA 90026

Hosted by



Sponsored by



Creating Healthy Communities: Using Data to Advance Women's Health

Welcome and Introduction

Ellen Eidem, MS, Director, Office of Women's Health
Los Angeles County Department of Public Health

Cynthia Harding, MPH, Chief Deputy Director
Los Angeles County Department of Public Health

PLENARY PANEL 1

Highlighting Factors Contributing to Women's Health Inequities

*Moderator: Rita Singhal, MD, MPH, Medical Director
Office of Women's Health, Los Angeles County
Department of Public Health*

Health Care Coverage and Access

Usha Ranji, MS, Associate Director
Women's Health Policy, Henry J. Kaiser Family Foundation

Economic Security and Well-Being

Surina Khan, CEO
Women's Foundation of California

Impact of Trauma, Violence and Stress on Health

Tiombe Wallace, MFT
Feminist Therapist, Trainer, Consultant

Homelessness and Women

Kimberly Roberts, LCSW, Director of
Housing Stabilization, LA Family Housing

Racial Justice: Focus on American Indian/ Alaskan Native Women

Andrea Garcia, MD, MS
UCLA National Clinician Scholars Program
Los Angeles County Department of Health Services

Q & A SESSION

training in Women's Health and Health Services Research and received her master's in Public Health at UCLA Fielding School of Public Health. She serves as a medical expert on chronic disease and cancer prevention and addressing social determinants of health among women. Dr. Singhal has dedicated her career to improving the health of underserved women in LA County. As an attending physician in the Department of Medicine at Olive View-UCLA Medical Center, she provides clinical care to women with complicated medical issues and provides instruction to residents in training. At the Office of Women's Health, she produces women's health disparities reports and implements public health programs with a goal of increasing women's health equity in the County.

Beatriz Maria Solís, PhD, MPH, is Director, Healthy Communities – South Region, at The California Endowment. She joined The Endowment in 2007 as the foundation's LA Regional Senior Program Officer. In 2009, Dr. Solís was tapped to be director of Healthy Communities—South Region, for the foundation's 10-year strategic program "Building Healthy Communities: California Living 2.0." In this position, Dr. Solís is responsible for advancing the vision and strategic direction of the initiative, as well as helping achieve established goals and outcomes through The Endowment's philanthropic efforts in Southern California. In addition, Dr. Solís served as a member of the foundation's statewide Community Health and Elimination of Health Disparities Program Team, which sought to help improve the environmental factors that contribute to the poor health status of residents in low-income communities, and to reduce the higher rates of health conditions and diseases experienced by racial and ethnic communities. She received her master's and doctorate in Public Health from UCLA's School of Public Health.

Tiombe Wallace, MFT, is a licensed Marriage and Family Therapist with over 20 years of experience as a feminist therapist, educator, and activist working to empower survivors and communities. As the owner of a private practice and consulting business, Tiombe, MFT, Inc., she provides individual and group therapy for survivors, consultation on curriculum and program development, clinical supervision, anti-oppression training, and speaking engagements for social services, universities, youth programs, crisis services, and counselor/mentor certification courses. She received dual bachelors' degrees from Scripps College in Claremont in Psychology and Women's Studies, and her master's in Counseling: Emphasis in Marriage and Family Therapy from California State University, Long Beach. She was the Director of Counseling Services for the Sexual Assault Crisis Agency, working in all facets of the rape crisis center for more than 12 years. Her specializations include intersectional feminist therapy, best practices in responding to complex interpersonal violence and trauma, and collaborative healing modalities. ■

OutRight Action International, and Political Research Associates. She serves on several Boards and is on the Advisory Group for Closing the Women’s Wealth Gap.

Carol Liu, a former teacher and school administrator, entered politics to become a City Council Member and two-term Mayor of La Cañada Flintridge. She then served in the California State Assembly from 2000-2006 and in the State Senate from 2008-2016. Carol chaired the Higher Education Committee in the Assembly and the Education Committee in the Senate. During her tenure, she also chaired the Senate Human Services Committee and the Senate Select Committee on Aging and Long Term Care. Carol authored laws to improve community college student success, prevent domestic violence, protect foster youth, provide alternative custody for non-violent offenders, and improve the aging and long-term care system. To advance regional collaboration, Carol established the Pathways program to simplify access to services for populations at risk, including veterans, seniors, women, and the homeless. Carol is now pursuing her passions through membership in California Competes, Habitat for Humanity, and the UC Alumni Association.

Usha Ranji, MS, is Associate Director for Women’s Health Policy at the Henry J. Kaiser Family Foundation. Her work addresses the impact of major health policy issues on women and girls, with an emphasis on insurance coverage, access to care, and low-income populations. Her work aims to understand how federal, state, and local policies, including national health care reform and reproductive health policies, influence health and access to services for women. Prior to joining the Kaiser Family Foundation, Usha worked in Chicago at Health and Medicine Policy Research Group, where her work focused on analyzing the consequences of the welfare program on access to health care for low-income families in Illinois. Usha received a master’s degree in Health Policy and Management from the School of Public Health at Harvard University.

Kimberly Roberts, LCSW, is Director of Housing Stabilization at LA Family Housing. She has a decade of experience working in communities impacted by housing instability. She earned her MSW at USC School of Social Work, and began her career providing direct services to youth experiencing homelessness at Covenant House California, and at LAUSD, where she ensured homeless students were afforded resources to address their educational needs. Kimberly went on to practice at a community clinic, tackling chronic mental health issues linked to generational poverty and homelessness. She was integral in developing and training staff to use trauma-informed models with high-barrier families. She develops strategies to support families transitioning out of homelessness and into permanent housing using evidenced-based methods, and provides clinical and technical assistance to community partners to increase housing stability for families within the Service Planning Area 2 Coordinated Entry System.

Rita Singhal, MD, MPH, is Medical Director of the LA County Department of Public Health, Office of Women’s Health, a position she has held for over 10 years. She is board-certified in Internal Medicine and an Associate Professor in the Department of Medicine at the David Geffen School of Medicine at UCLA. Dr. Singhal has completed fellowship

BREAK

PLENARY PANEL 2 - A Fireside Chat

Advancing Women’s Health in the Current Environment

Moderator: Cynthia Harding, MPH, Chief Deputy Director, Los Angeles County Department of Public Health

PANELISTS

Beatriz Solis, MPH, PhD, Director
Healthy Communities – South Region
The California Endowment

Honorable Carol Liu
California State Assemblywoman (2000-2006)
California State Senator (2008-2016)

Crystal Crawford, JD, Program Director
The California Wellness Foundation

Juana Rosa Cavero, Director
California Coalition for Reproductive Freedom

Concluding Remarks

Barbara Ferrer, PhD, MPH, MEd, Director
Los Angeles County Department of Public Health

Ellen Eidem, MS, Director, Office of Women’s Health
Los Angeles County Department of Public Health

*Thank You
for Joining Us Today!*

Speaker Biographies

Alphabetical Order by Last Name

Juana Rosa Cavero is Director of the California Coalition for Reproductive Freedom (CCRF), a statewide alliance of nearly 40 diverse organizations using collective policy advocacy to promote sexual and reproductive health, rights and justice. With a strong commitment to reproductive justice, Juana Rosa is committed to co-creating transformative systems' change for positive health and well-being. She practices a collaborative spirit in leading various campaigns and projects. While at Advancement Project - California, she worked with multi-sector partners in civic engagement, public accountability, and community health and development. As Director of the Reproductive Justice Coalition of Los Angeles, Juana Rosa led over 25 organizations in advocacy campaigns for reproductive and sexual health. She is an alum of the Women's Policy Institute of California and an alum of the CoreAlign Generative Innovation Project at the University of California, San Francisco.

Crystal D. Crawford, JD, is Chairperson of the Los Angeles County Public Health Commission in addition to serving as a Program Director at The California Wellness Foundation. Previously, she was CEO of the California Black Women's Health Project, the only statewide organization solely devoted to improving the health of California's black women and girls through policy, advocacy, education and outreach. Before working in the nonprofit, public interest sector, Crystal was a litigation associate with nationally renowned corporate law firms, as well as a public school teacher. She also serves as a member of the Women's Health Policy Council for the LA County Department of Public Health's Office of Women's Health. Originally from Harlem, New York, Crystal earned her bachelor's degree in history from Dartmouth College and law degree from New York University School of Law. She is admitted to the bar in California, New York and New Jersey.

Ellen Eidem, MS, is Director of the Office of Women's Health, LA County Department of Public Health. The Office seeks to decrease health inequities and improve the health of women in LA County working at the individual, community, and systems levels through education, advocacy, program planning and promotion, policy recommendations, and increasing access to services, especially for low-income and underserved women. Prior to 2002, Ellen served as the Director of Programs and Administration for the Los Angeles Free Clinic (now Saban Community Clinic) and as the Director of Quality Improvement for the California and Los Angeles Regional Family Planning Councils (now Essential Access Health). Prior to this, Ellen was an administrator and instructor at Planned Parenthood Alameda/San Francisco and the Berkeley Women's Health Collective.

Barbara Ferrer, PhD, MPH, MEd, is Director of the Los Angeles County Department of Public Health. She is a nationally known public health leader with over 30 years of professional experience as a philanthropic strategist, public health director, educational leader, researcher, and community advocate. Most recently, Dr. Ferrer served as the Chief Strategy Officer for the W.K. Kellogg Foundation, where she was responsible for developing the strategic direction for critical program-related work and providing leadership to the foundation's key program areas, including Family Economic Security; Food, Health and Well-Being; and Racial Equity. Prior to that, she served as the Executive Director of the Boston Public Health Commission. Dr. Ferrer received her PhD in Social Welfare from Brandeis University, a master's in Public Health from Boston University, a master's in Education from the University of Massachusetts, Boston, and a bachelor's in Community Studies from UC Santa Cruz.

Andrea Garcia, MD, MS, is a current fellow in the National Clinician Scholars Program at UCLA, where she is partnered with the Los Angeles County Department of Health Services. She was trained in General and Preventive Medicine with the California Department of Public Health, and she carried out her practicum experience with the Los Angeles County Department of Public Health in the Division of Chronic Disease and Injury Prevention. She completed an internship in internal medicine at White Memorial Medical Center in Boyle Heights. She is a proud graduate of the UC Berkeley-UC San Francisco Joint Medical Program where she obtained her master's degree in Health and Medical Sciences from UC Berkeley, and her medical degree from UC San Francisco. Dr. Garcia is interested in a career that spans the topics of urban American Indian health and health policy, health equity and workforce diversity.

Cynthia A. Harding, MPH, is Chief Deputy of the Los Angeles County Department of Public Health. Previously, she served as the department's Interim Director for two-and-a-half years, overseeing a budget of nearly \$1 billion and more than 39 distinct programs that promote and protect health, and prevent disease in Los Angeles County. She has worked in the Department of Public Health for over 30 years in a variety of different public health programs, including Maternal, Child and Adolescent Health; Tobacco Control; Childhood Lead Poisoning Prevention; Tuberculosis Control and AIDS prevention. Ms. Harding has a bachelor's degree in Community Health from Brown University, a master's of Public Health from UCLA, and a Certificate of Management from USC's Center of Excellence in Health Care Management.

Surina Khan is CEO of the Women's Foundation of California (WFC) where she leads the Foundation in its work to advance gender justice through grantmaking and policy advocacy. For more than two decades, Surina has been a leader in the philanthropic and nonprofit social justice sector on an array of social justice issues, including gender equity, LGBT rights, democratic participation, human rights and more. Surina is a gender justice expert and has served the social justice and philanthropic sector in a variety of ways, including positions at the Ford Foundation,