



Monthly Summary Report on COVID-19 among People Experiencing Homelessness (PEH) in Los Angeles County

Data through 01/31/2024

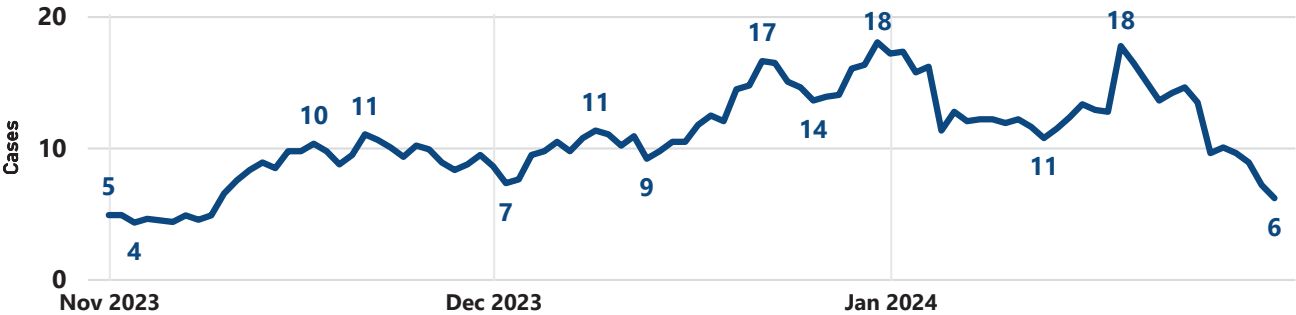
350

PEH cases in January

27,928

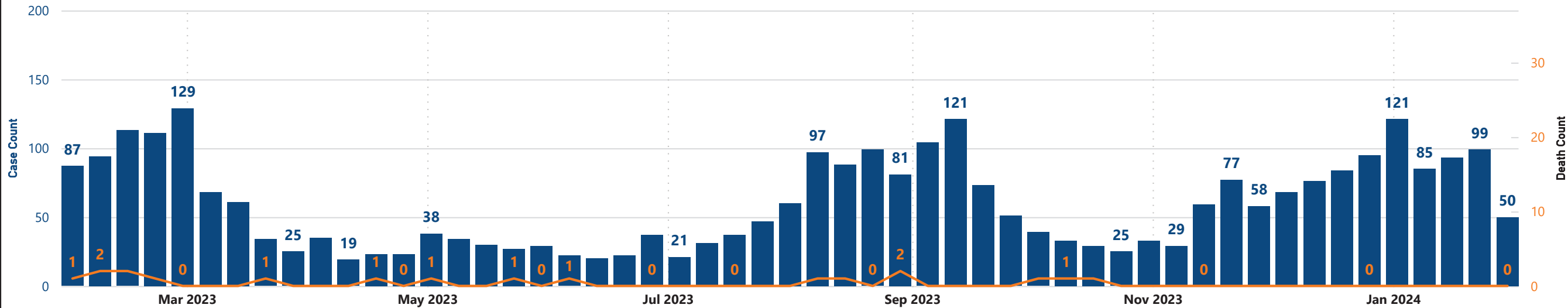
Cumulative PEH cases

Daily 7-day average of PEH cases by episode date, last 3 months



PEH COVID-19 cases and deaths by week, last 12 months

● PEH Cases ● PEH Deaths



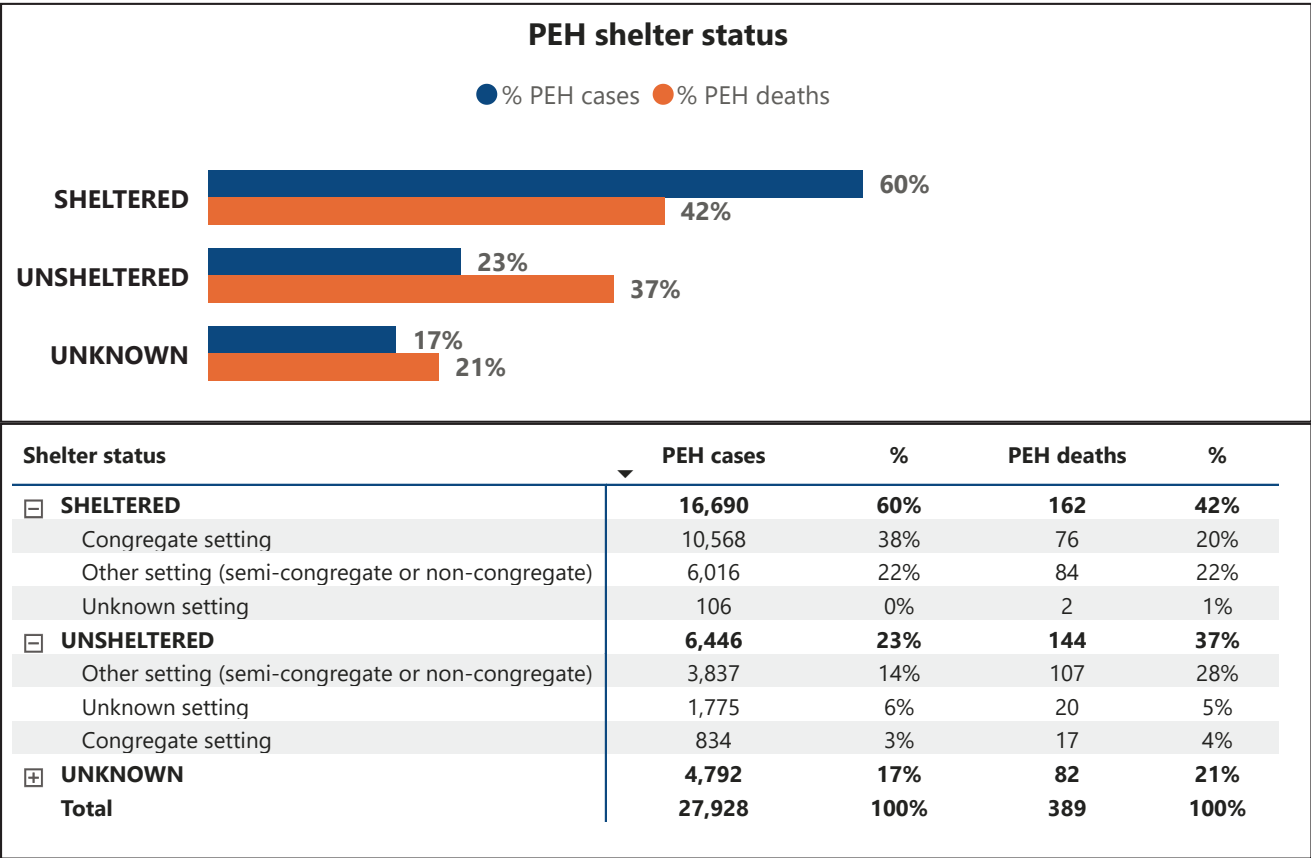
Cases include laboratory confirmed cases and unconfirmed cases (e.g., positive results from over the counter or at-home tests).
Cases are reported by episode date, which is the earliest of the date of first positive test, date of symptom onset, date of diagnosis, date of death, or date received. Deaths are reported by date of death.
Weeks are presented from Wednesday to Tuesday. Weekly data displayed through last complete week for the data through date.
7-day average is the unweighted average of daily new PEH cases for each 7-day period.
Excludes cases identified from the cities of Long Beach and Pasadena.
Prepared by Acute Communicable Disease Control Program, Community Outbreak team of the Los Angeles County Department of Public Health.



Monthly Summary Report on COVID-19 among People Experiencing Homelessness (PEH) in Los Angeles County

Data through 01/31/2024

PEH Case Demographics Cumulative to Date



Age groups	PEH cases	%	PEH deaths	%
0-17	2,018	7%		
18-24	1,973	7%	2	1%
25-29	2,600	9%	4	1%
30-39	5,827	21%	21	5%
40-49	4,822	17%	68	17%
50-59	5,508	20%	90	23%
60-64	2,493	9%	76	20%
65+	2,603	9%	125	32%
Unknown	84	0%	2	1%
Total	27,928	100%	389	100%

Gender identity	PEH cases	%	PEH deaths	%
Male	16,797	60%	307	79%
Female	9,507	34%	79	20%
Unknown	1,427	5%	2	1%
Transgender Female/Trans Woman	113	0%		
Transgender Male/Trans Man	32	0%		
Gender Non-Binary/Gender Non-Conforming	22	0%		
Prefer not to state	22	0%		
Another Identity	8	0%		
Total	27,928	100%	389	100%

Race/ethnicity	PEH cases	%	PEH deaths	%
Latinx	10,179	36%	174	45%
Black/African American	8,158	29%	106	27%
White	4,767	17%	78	20%
Unknown	4,154	15%	20	5%
Asian	367	1%	6	2%
American Indian/Alaska Native	196	1%	1	0%
NHOPI	107	0%	3	1%
Total	27,928	100%	389	100%

Case reports are investigated to assess housing and shelter status at or near the time of COVID-19 infection.

Shelter status is defined according to Housing and Urban Development (HUD) criteria. A sheltered case resides in a publicly or privately operated shelter or housing designated to provide temporary living arrangements. An unsheltered case resides in a place not meant for human habitation, such as cars, parks, sidewalks, abandoned buildings (on the street).

Congregate settings include residential facilities or other housing where unrelated residents share at least one common room (e.g., sleeping room, kitchen, bathroom) such as emergency and transitional homeless shelters, recuperative care centers, and encampments.

Other settings include semi-congregate locations where individuals or households have space that offers some level of privacy, such as smaller rooms with fewer individuals and/or partitions (tiny homes, single-room occupancy housing, safe parking sites), non-congregate locations (e.g., couch surfing, streets, vehicles), and non-residential locations (e.g., homeless service providers, hygiene centers).

Unknown setting refers to cases in which their whereabouts are unknown or is currently under investigation.

Percentages may not add to 100% due to rounding.



Monthly Summary Report on COVID-19 among People Experiencing Homelessness (PEH) in Los Angeles County

Data through 01/31/2024

Outbreaks at sites serving people experiencing homelessness

9

Outbreaks in January

1,982

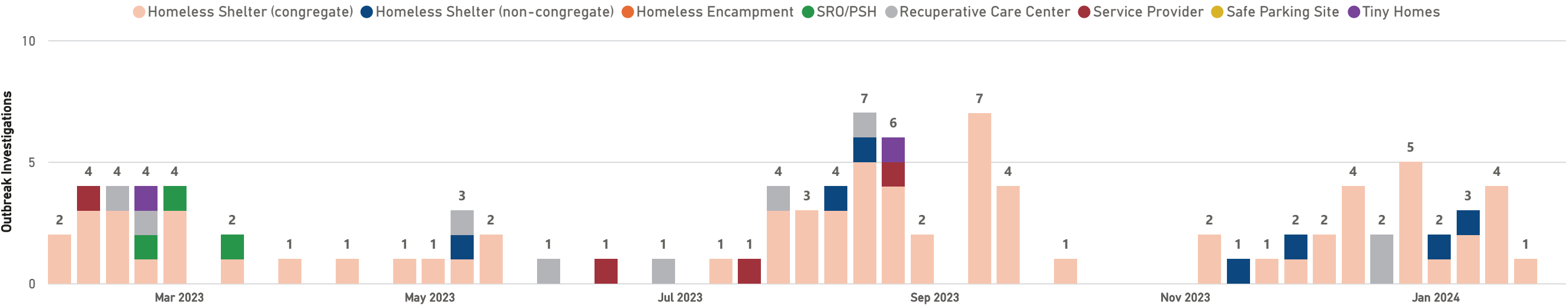
Cumulative outbreaks

14,990

Cumulative outbreak associated cases

Outbreak location type	Outbreaks in January	Cumulative outbreaks	%	Cumulative cases	%	Non-staff cases	Staff cases
Homeless Shelter (congregate)	8	1,157	58%	10,075	67%	7,712	2,339
Homeless Encampment	0	381	19%	815	5%	797	17
SRO/PSH	0	134	7%	765	5%	530	236
Homeless Shelter (non-congregate)	1	113	6%	1,830	12%	1,232	599
Recuperative Care Center	0	91	5%	906	6%	562	344
Service Provider	0	51	3%	314	2%	23	292
Safe Parking Site	0	28	1%	51	0%	35	16
Tiny Homes	0	27	1%	234	2%	126	108
Total	9	1,982	100%	14,990	100%	11,017	3,951

Outbreak investigations by week of index case onset and location type, last 12 months



Includes active outbreaks and outbreaks that have resolved at sites serving PEH in Los Angeles County.

Outbreaks are reported according to date of outbreak date onset.

Outbreak-associated cases are defined as the index case of the outbreak and cases that are epidemiologically linked to other outbreak associated COVID-19 case(s) during the outbreak surveillance period. Non-staff includes PEH residents, as well as non-residents (PEH or non-PEH) that frequent the outbreak location who do not work there.

Staff refer to employees, volunteers, and contractors.

SRO/PSH refers to single room occupancy and permanent supportive housing.

Data are subject to change due to reporting lags, pending investigations, or updates to outbreak information during investigation.

Note for February report (data through 1/31/2024): a group of historic outbreaks are now included under Homeless shelter (non-congregate) setting type that were not previously included. This has caused a one-time increase to the cumulative outbreak counts at sites serving PEH.



COVID-19 Vaccination Among People Experiencing Homelessness, Los Angeles County

Data through 01/31/2024

PEH vaccinated with 2023–2024 updated COVID-19 vaccines

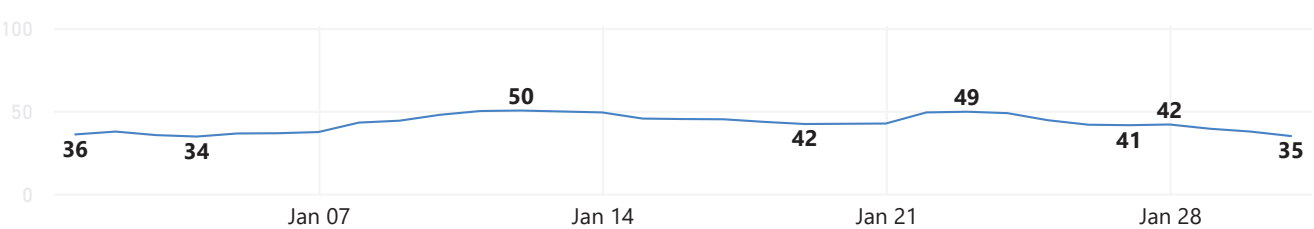
7,853

Overall

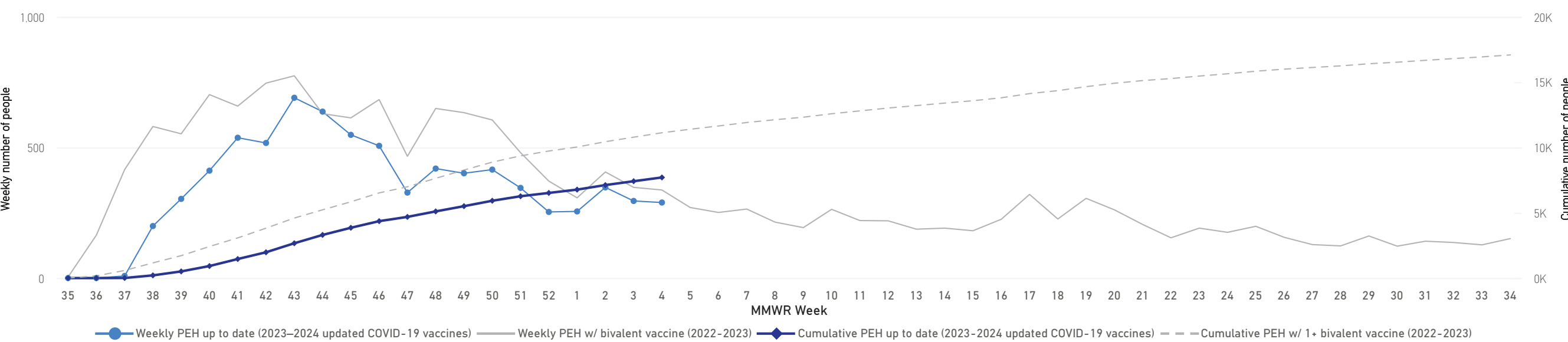
1,334

in January 2024

Daily 7-day average number of PEH vaccinated, January 2024



Vaccination progress among PEH in LA County, by MMWR week



Data from California Immunization Registry (CAIR). Includes COVID-19 vaccine doses administered to LA County residents, including Long Beach and Pasadena. Data are being updated in CAIR. Data on people vaccinated may fluctuate.

PEH refers to people experiencing homelessness. This report includes people who may be experiencing homelessness, have formerly experienced homelessness, and people at imminent risk of homelessness. Includes PEH who may be active in Los Angeles, Long Beach, Pasadena and/or Glendale Continuums of Care (CoC). CoC is a regional or local planning body that coordinates housing and services funding for homeless families and individuals.

For the purpose of this report, a CAIR COVID-19 vaccine recipient is considered PEH if any of the following is identified: 1.) recipient was enrolled for housing or services in LA County CoC and has a profile in LA County CoC Homeless Management Information System (HMIS), operated by Los Angeles Homeless Services Authority (LAHSA); 2) recipient has a Housing for Health vaccination record that indicates PEH; 3.) recipient has CAIR address field keywords indicating homelessness.

2023–2024 updated COVID-19 vaccines refers to Pfizer, Moderna, and Novavax 2023–2024 doses. Advisory Committee on Immunization Practices (ACIP) approved use of 2023–2024 updated COVID-19 vaccine in MMWR week 37 on September 11, 2023.

Bivalent vaccine refers to bivalent Moderna and Pfizer doses. ACIP approved use of bivalent vaccine in MMWR week 35 on September 1, 2022 (as a booster dose) and approved broader use in MMWR week 16 on April 19, 2023. Bivalent vaccine is no longer approved for use in the United States as of September 11, 2023.

Weekly data are presented according to Morbidity and Mortality Weekly Report (MMWR) week (Sunday to Saturday). Weekly data displayed through last complete MMWR week for the data through date.

Weekly and cumulative counts of people vaccinated over time is according to the week of first administered dose of bivalent vaccine, or the date when the recipient was determined to be up to date (2023–2024 updated COVID-19 vaccines).



COVID-19 Vaccination Among People Experiencing Homelessness, Los Angeles County

Data through 01/31/2024

Demographics of PEH COVID-19 vaccine recipients, by vaccine

Age	2023–2024 updated COVID-19 vaccines (n)	(column %)	Bivalent vaccine (n)	(column %)
▲				
6 mos-4 yrs	24	0	74	0
5-11 yrs	123	2	231	1
12-17 yrs	106	1	364	2
18-29 yrs	849	11	2,383	14
30-49 yrs	2,516	32	6,161	35
50-64 yrs	2,922	37	5,966	34
65+ yrs	1,313	17	2,178	13
Total	7,853	100	17,357	100

Race/ethnicity	2023–2024 updated COVID-19 vaccines (n)	(column %)	Bivalent vaccine (n)	(column %)
▲				
American Indian or Alaska Native	56	1	71	0
Asian	209	3	411	2
Black or African American	1,882	24	4,579	26
Latinx	2,460	31	5,850	34
Multi-Race	104	1	567	3
Native Hawaiian or Other Pacific Islander	14	0	31	0
Other Race	1,012	13	1,447	8
Unknown	463	6	907	5
White	1,653	21	3,494	20
Total	7,853	100	17,357	100

Gender	2023–2024 updated COVID-19 vaccines (n)	(column %)	Bivalent vaccine (n)	(column %)
▲				
Female	2,824	36	6,352	37
Male	5,023	64	11,001	63
Other or Unknown	6	0	4	0
Total	7,853	100	17,357	100

Data from California Immunization Registry (CAIR). Includes COVID-19 vaccine doses administered to LA County residents, including Long Beach and Pasadena.

2023-2024 updated COVID-19 vaccines refers to Pfizer, Moderna, and Novavax 2023-2024 doses. ACIP approved use of 2023-2024 updated COVID-19 vaccine in MMWR week 37 on September 11, 2023.

Bivalent vaccine refers to bivalent Moderna and Pfizer doses. ACIP approved use of bivalent vaccine in MMWR week 35 on September 1, 2022 (as a booster dose) and approval for broader use in MMWR week 16 on April 19, 2023. Bivalent vaccine is no longer approved for use in the United States as of September 11, 2023.

Demographics are according to CAIR COVID-19 vaccination recipient information. Gender categorizations are limited by sex/gender stratifications available in CAIR. Race/ethnicity is presented as mutually exclusive categories.

Demographics of COVID-19 vaccine recipients will be included for each vaccine category (2023-2024 updated vaccines and bivalent vaccine) if they received at least one dose of each vaccine.

Data are being updated in CAIR. Data on people vaccinated may fluctuate.