

TITLE V INDICATOR TEMPLATES

INDICATOR: Fetal deaths

DEFINITION: The number of fetal deaths of 20 weeks or more gestation per 1,000 live births plus fetal deaths

NUMERATOR: The number of fetal deaths of 20 weeks or more gestation, by place of residence, in a calendar year

DENOMINATOR: The total number of live births plus fetal deaths, by place of residence, in a calendar year

HEALTHY PEOPLE 2000 OBJECTIVE:

Reduce the fetal death rate (20 or more weeks of gestation) to no more than 5 per 1,000 live births plus fetal deaths. (Baseline: 7.6 per 1,000 live births plus fetal deaths in 1987) (Objective 14.2)

RISK FACTORS: Race/ethnicity (African American); maternal diabetes; pregnancy complications; maternal medical complications/chronic illness during pregnancy (including severe maternal infection); Rh sensitization; congenital anomalies; intrauterine cocaine exposure; maternal history of miscarriage

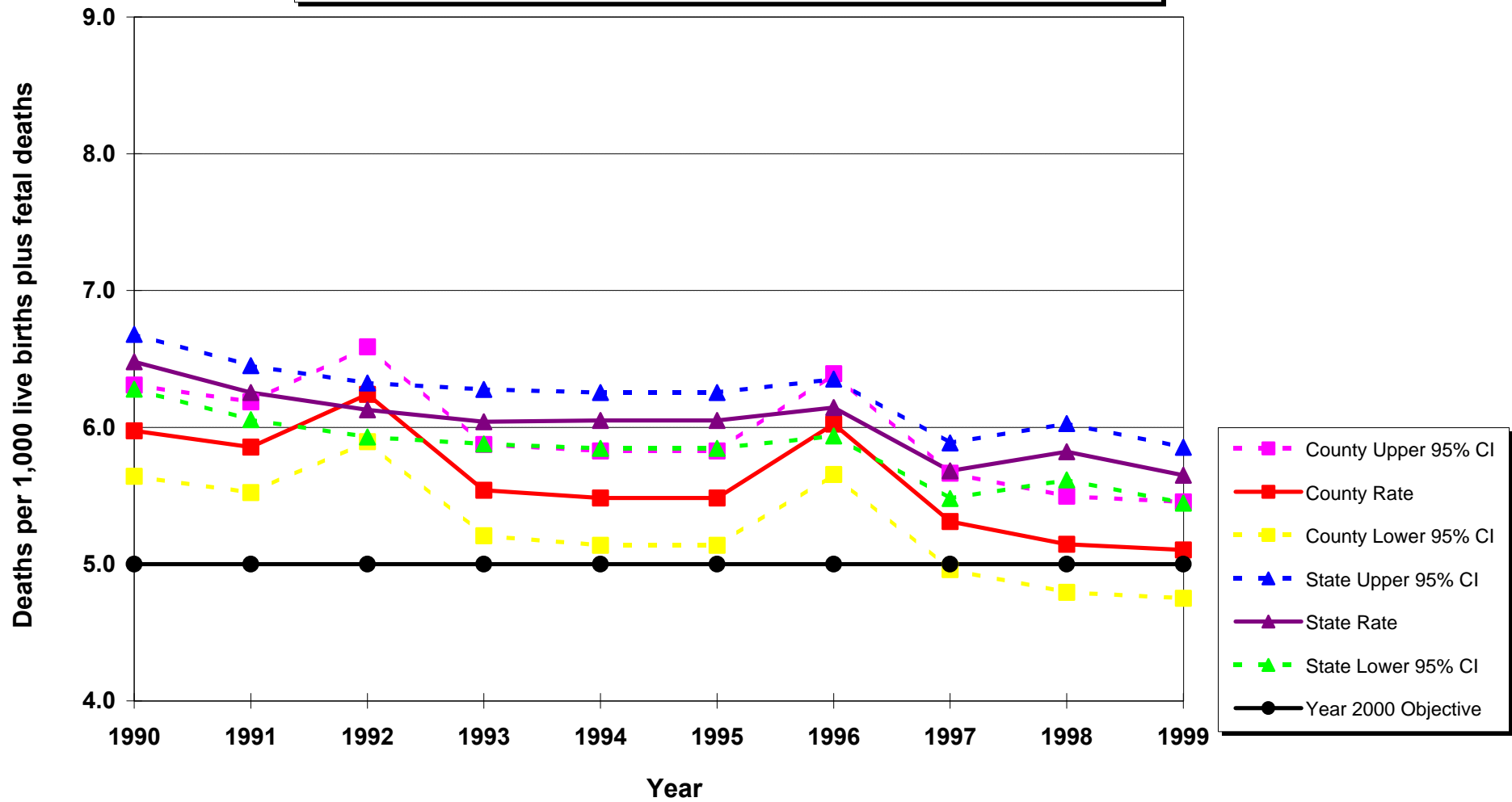
Year	California				LA County			
	Fetal Death		95% Confidence Interval		Fetal Death		95% Confidence Interval	
	Number	Rate	Lower	Upper	Number	Rate	Lower	Upper
1990	3,989	6.5	6.3	6.7	1,227	6.0	5.6	6.3
1991	3,834	6.3	6.1	6.5	1,194	5.9	5.5	6.2
1992	3,704	6.1	5.9	6.3	1,240	6.2	5.9	6.6
1993	3,574	6.0	5.9	6.3	1,057	5.5	5.2	5.9
1994	3,299	5.8	5.6	6.0	1,018	5.6	5.3	6.0
1995	3,355	6.0	5.8	6.3	964	5.5	5.1	5.8
1996	3,330	6.1	5.9	6.4	1,024	6.0	5.7	6.4
1997	2,996	5.7	5.5	5.9	866	5.3	5.0	5.7
1998	3,053	5.8	5.6	6.0	821	5.1	4.8	5.5
1999	2,927	5.6	5.4	5.9	801	5.1	4.8	5.5

DENOMINATOR: Total Births*	
California	LA County
615,655	205,351
613,062	203,931
604,542	198,655
588,057	190,763
570,333	181,412
554,581	175,826
541,958	169,997
527,268	163,030
524,442	159,555
518,073	156,954

Source: 1990-1999 birth and fetal death records from California Department of Health Services, Center for Health Statistics

Note: *Total births = number of live births + number of fetal deaths

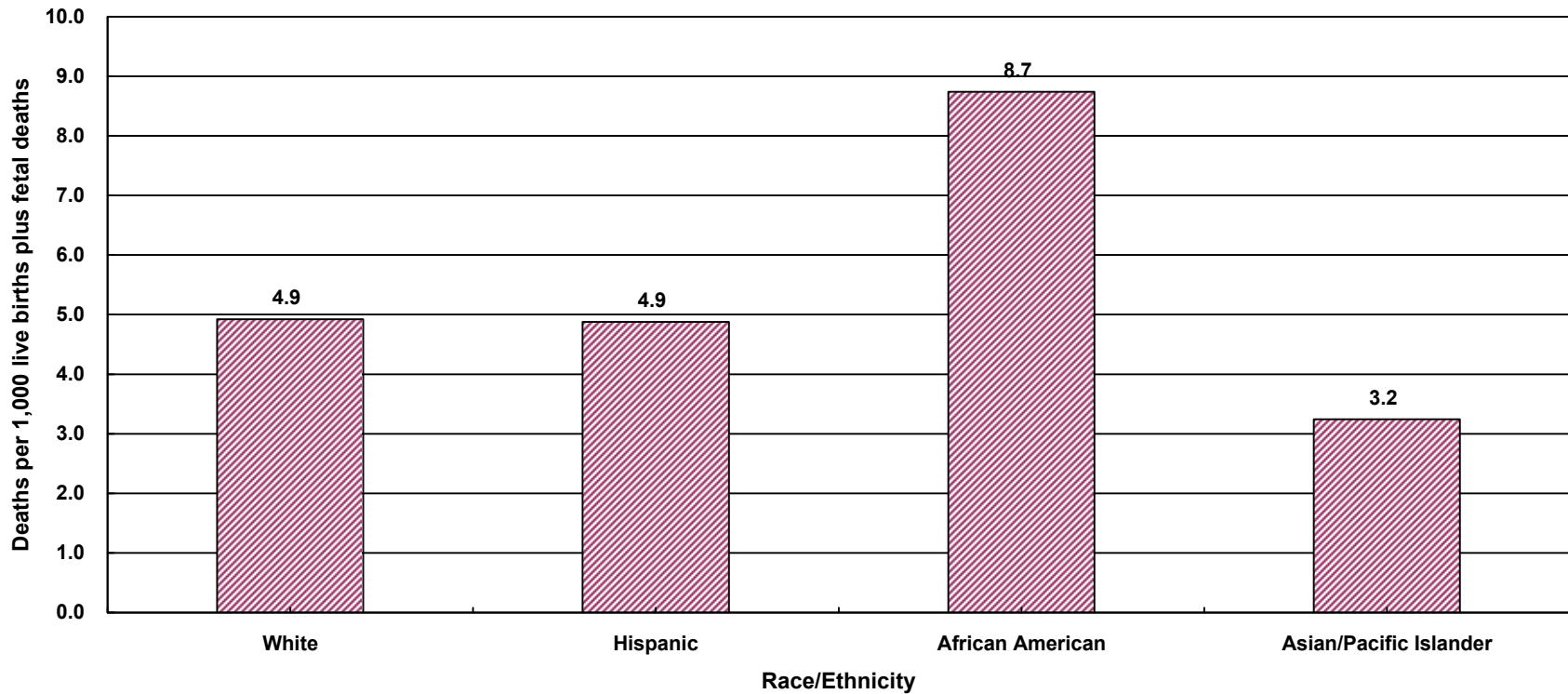
Fetal Deaths per 1,000 Live Births plus Fetal Deaths California vs. Los Angeles County, 1990 - 1999



Year 2000 Objective: Reduce the fetal death rate (20 or more weeks of gestation) to no more than 5 per 1,000 live births plus fetal deaths.

Source: 1990-1999 birth and fetal death records from California Department of Health Services, Center for Health Statistics

Fetal Mortality Rate by Mother's Race/Ethnicity* Los Angeles County, 1999



Los Angeles County, 1999				
Race/Ethnicity	Fetal Mortality		95% Confidence Interval	
	Number	Rate	Lower	Upper
White	146	4.9	4.1	5.7
Hispanic	476	4.9	4.4	5.3
African American	121	8.7	7.2	10.3
Asian/Pacific Islander	49	3.2	2.3	4.2
Native American	0	nc	nc	nc
Other/Unknown	9	18.0	6.3	29.6
Total	801	5.1	4.8	5.5

Total Births
29,660
97,579
13,845
15,099
270
501
156,954

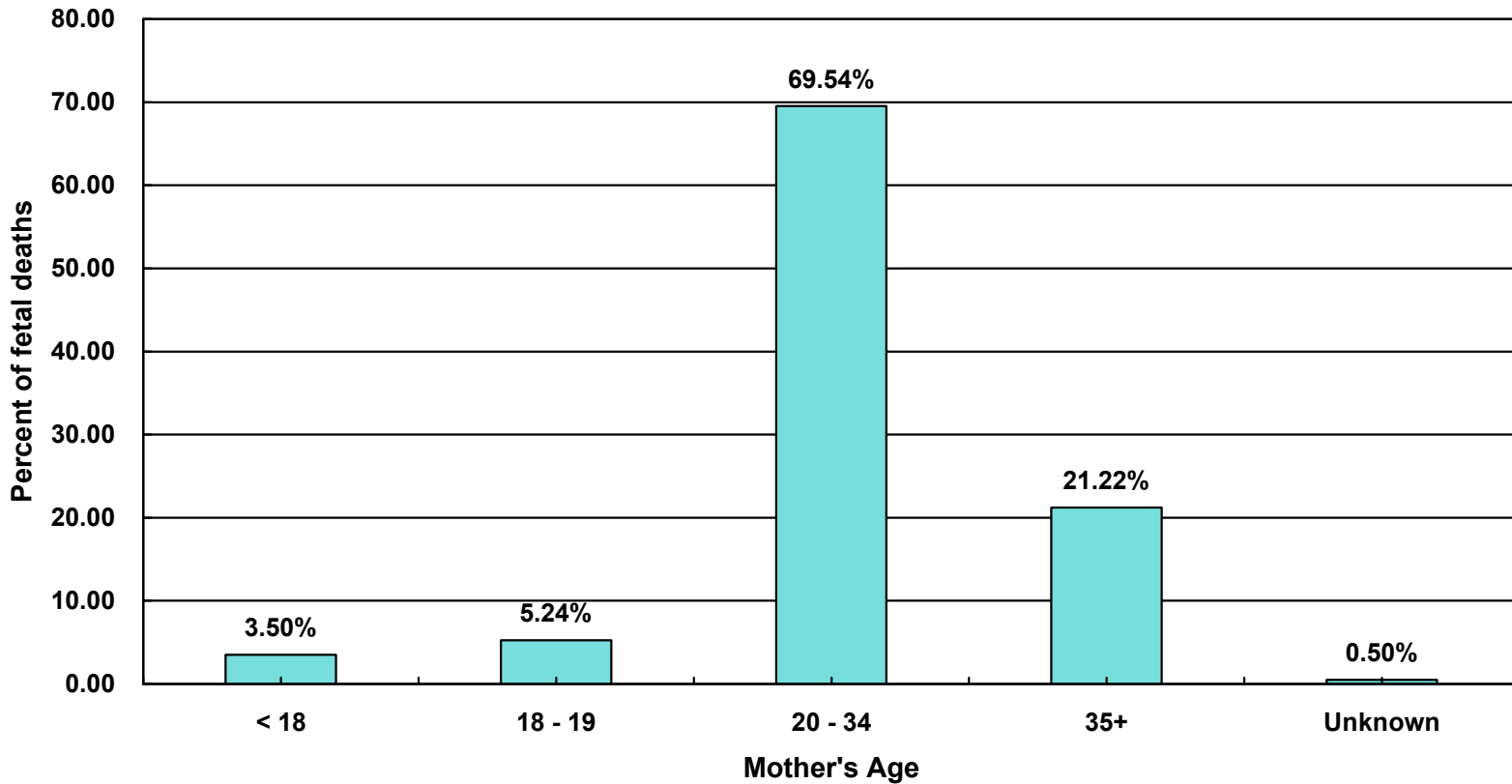
* White, African American, Asian, Native American and other races exclude Hispanic ethnicity
Hispanic includes any race category
nc Rates are not calculated if no more than five deaths.

Year 2000 Objective: Reduce the fetal death rate (20 or more weeks of gestation) to no more than 5 per 1,000 live births plus fetal deaths.

Note: Fetal mortality rates are fetal deaths per 1,000 live births plus fetal deaths. Fetal deaths are those occurring during 20 weeks or more gestational period.

Source: 1999 birth and fetal death records from the California Department of Health Services, Center for Health Statistics

**Percent of Fetal Deaths by Mother's Age
Los Angeles County, 1999**



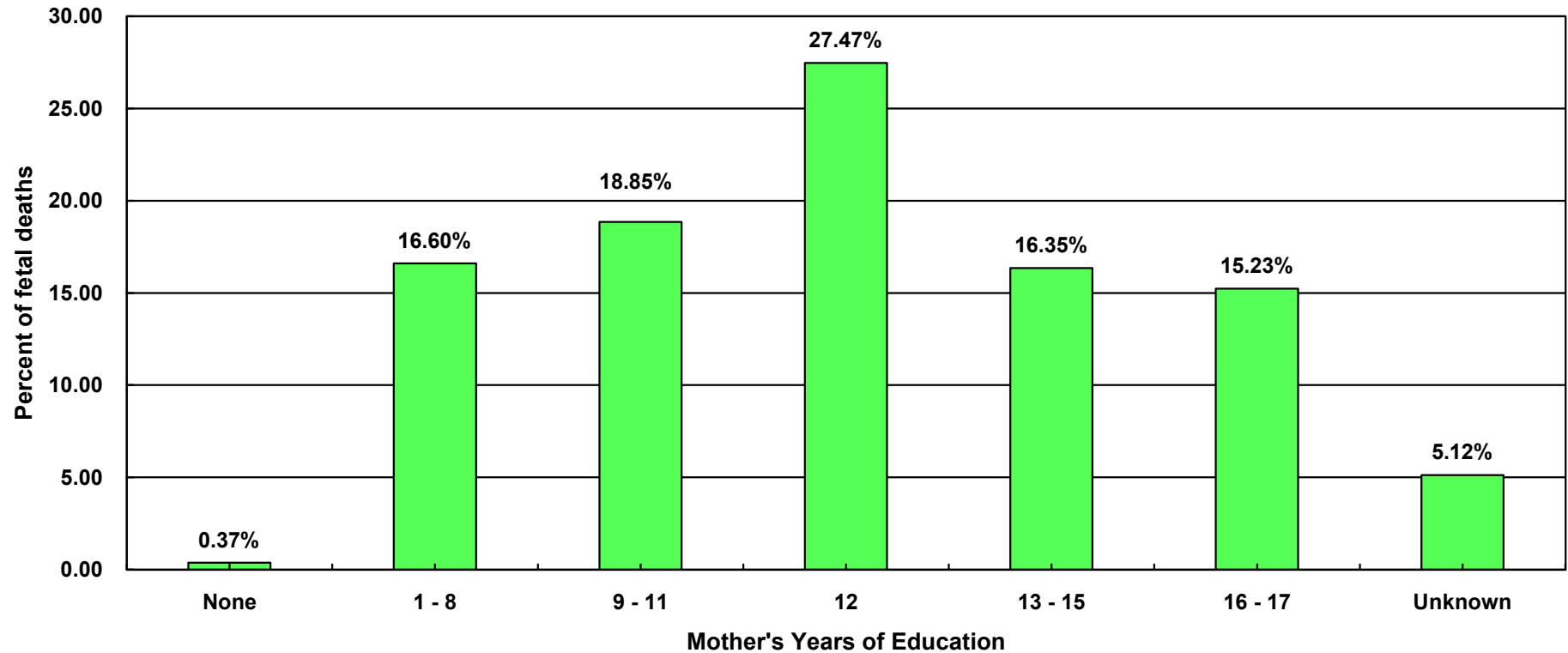
Mother's Age									
< 18		18 - 19		20 - 34		35+		Unknown	
Number	Percent	Number	Percent	Number	Percent	Number	Percent	Number	Percent
28	3.50	42	5.24	557	69.54	170	21.22	4	0.50

Note: Total fetal deaths in 1999 = 801

Fetal deaths are those occurring during 20 weeks or more gestational period.

Source: 1999 fetal death records from the California Department of Health Services, Center for Health Statistics

**Percent of Fetal Deaths by Mother's Years of Education
Los Angeles County, 1999**



Years of Education													
None		1 - 8		9 - 11		12		13 - 15		16 - 17		Unknown	
Number	Percent	Number	Percent	Number	Percent	Number	Percent	Number	Percent	Number	Percent	Number	Percent
3	0.37	133	16.60	151	18.85	220	27.47	131	16.35	122	15.23	41	5.12

Note: Total fetal deaths in 1999 = 801

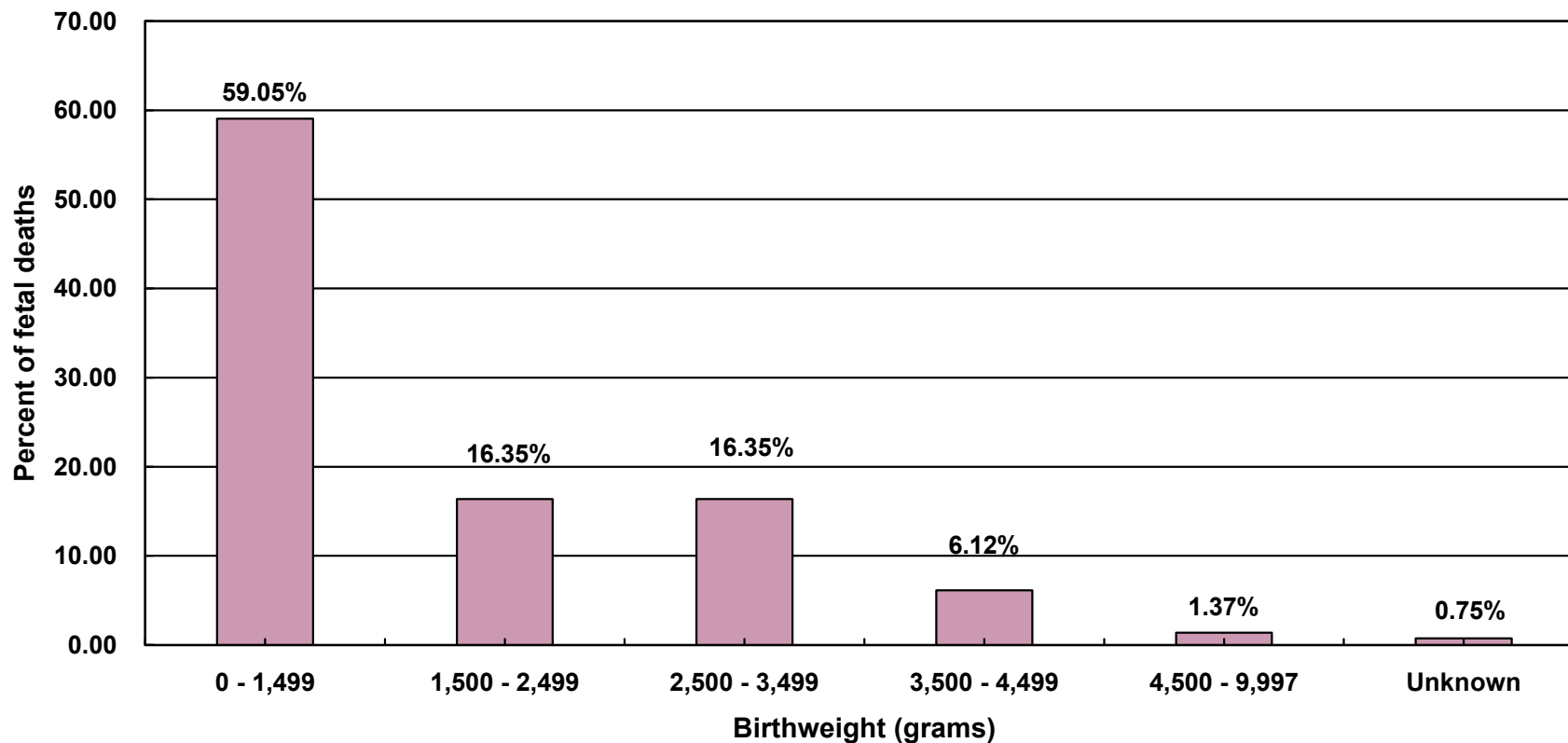
Fetal deaths are those occurring during 20 weeks or more gestational period.

Year '17' = mothers who attained college degree or above

This analysis did not adjust for teen mothers who may not be old enough to have reached higher categorical education level.

Source: 1999 fetal death records from the California Department of Health Services, Center for Health Statistics

**Percent of Fetal Deaths by Birthweight Category
Los Angeles County, 1999**



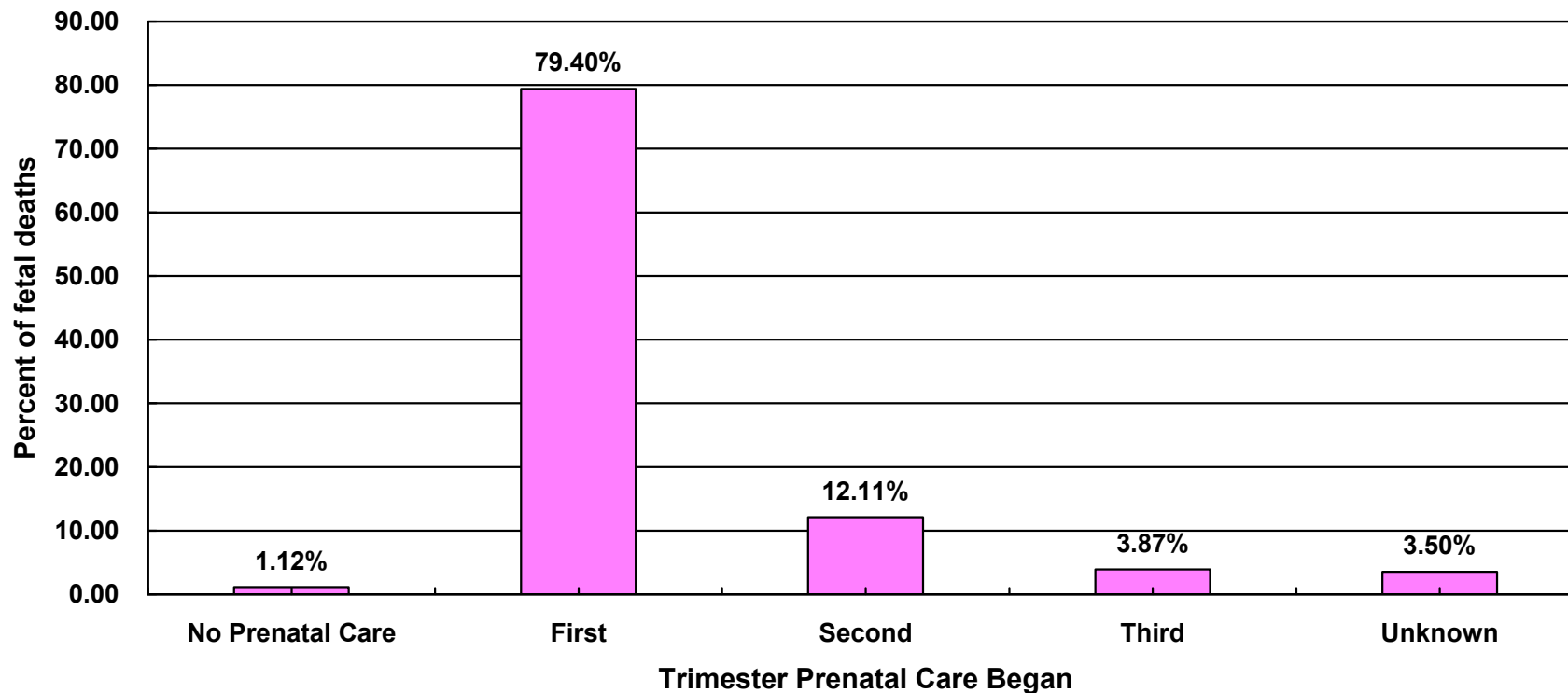
Birthweight (grams)											
0 - 1,499		1,500 - 2,499		2,500 - 3,499		3,500 - 4,499		4,500 - 9,997		Unknown	
Number	Percent	Number	Percent	Number	Percent	Number	Percent	Number	Percent	Number	Percent
473	59.05	131	16.35	131	16.35	49	6.12	11	1.37	6	0.75

Note: Total fetal deaths in 1999 = 801

Fetal deaths are those occurring during 20 weeks or more gestational period.

Source: 1999 fetal death records from the California Department of Health Services, Center for Health Statistics

**Percent of Fetal Deaths by Mother's Trimester Prenatal Care Began
Los Angeles County, 1999**



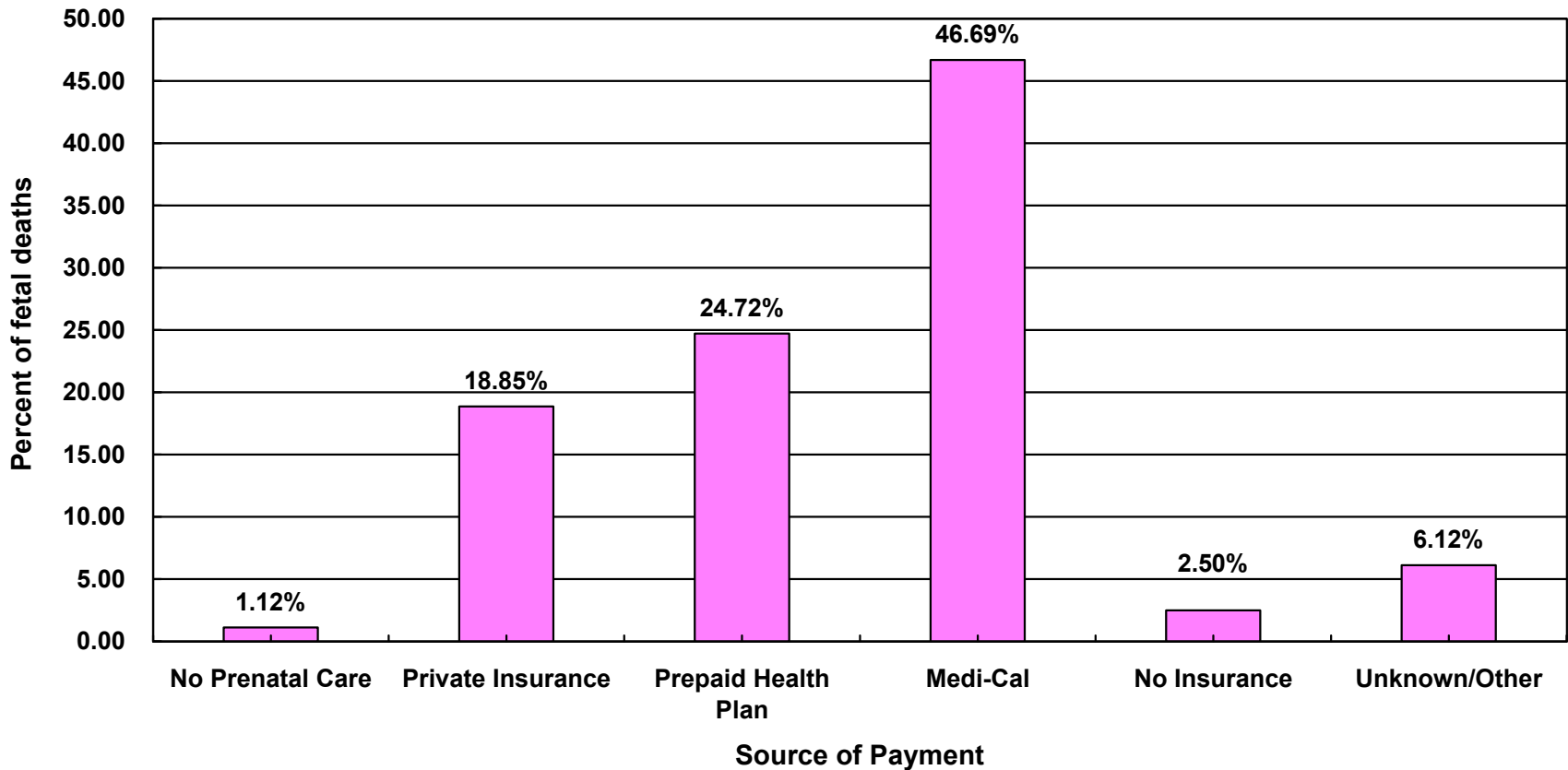
Trimester Prenatal Care Began									
No Prenatal Care		First		Second		Third		Unknown	
Number	Percent	Number	Percent	Number	Percent	Number	Percent	Number	Percent
9	1.12	636	79.40	97	12.11	31	3.87	28	3.50

Note: Total fetal deaths in 1999 = 801

Fetal deaths are those occurring during 20 weeks or more gestational period.

Source: 1999 fetal death records from the California Department of Health Services, Center for Health Statistics

**Percent of Fetal Deaths by Source of Payment for Prenatal Care
Los Angeles County, 1999**



No Prenatal Care		Private Insurance		Prepaid Health Plan		Medi-Cal		No Insurance		Unknown/Other	
Number	Percent	Number	Percent	Number	Percent	Number	Percent	Number	Percent	Number	Percent
9	1.12	151	18.85	198	24.72	374	46.69	20	2.50	49	6.12

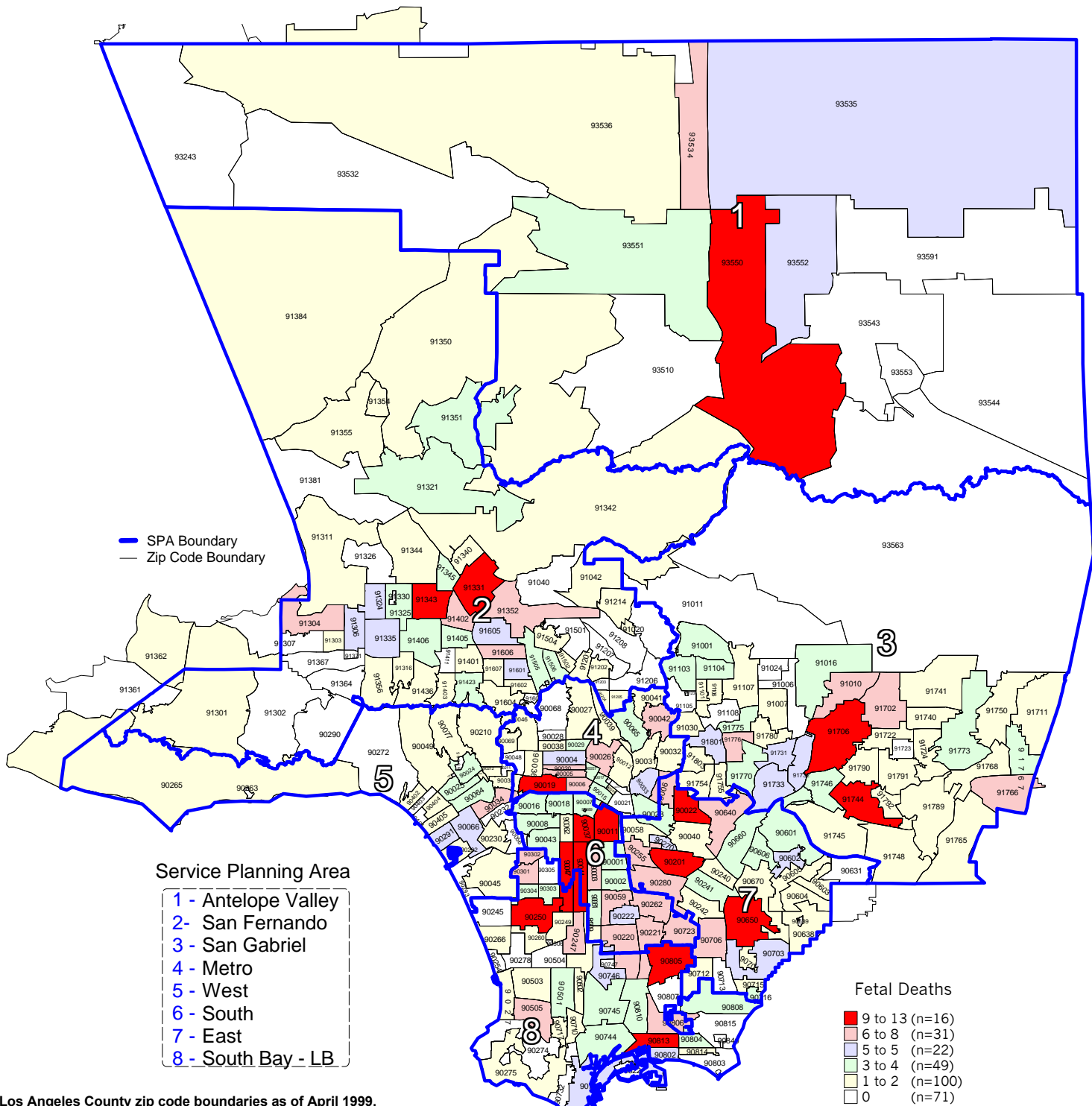
Note: Total fetal deaths in 1999 = 801

Fetal deaths are those occurring during 20 weeks or more gestational period.

Source: 1999 fetal death records from the California Department of Health Services, Center for Health Statistics

Number of Fetal Deaths by Zip Code* and Service Planning Area (SPA)

Los Angeles County, 1999



*Los Angeles County zip code boundaries as of April 1999.

Total number of live births in Los Angeles County, 1999 = 156,133
Total number of fetal deaths in Los Angeles County, 1999 = 801

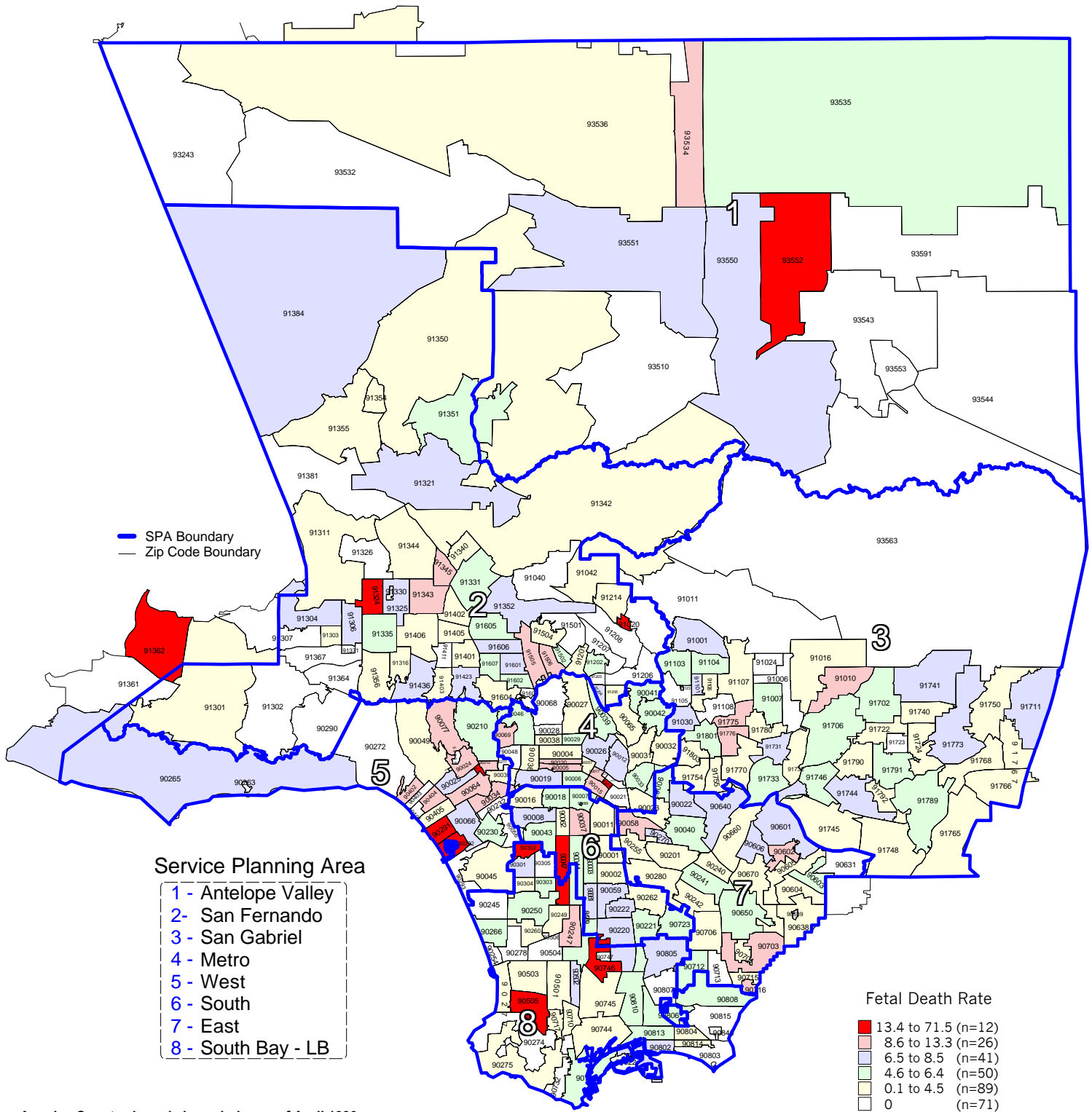
Note: Fetal death is defined as death occurring during 20 weeks or more gestational period.

Source: 1999 birth records from California Department of Health Services, Center for Health Statistics

n = total number of zip codes in range

Fetal Mortality Rate by Zip Code* and Service Planning Area (SPA)

Los Angeles County, 1999



*Los Angeles County zip code boundaries as of April 1999.

Total number of live births in Los Angeles County, 1999 = 156,153
Total number of fetal deaths in Los Angeles County, 1999 = 801

Note: Fetal death is defined as death occurring during 20 weeks or more gestational period.

Source: 1999 birth records from California Department of Health Services, Center for Health Statistics

n = total number of zip codes in range

