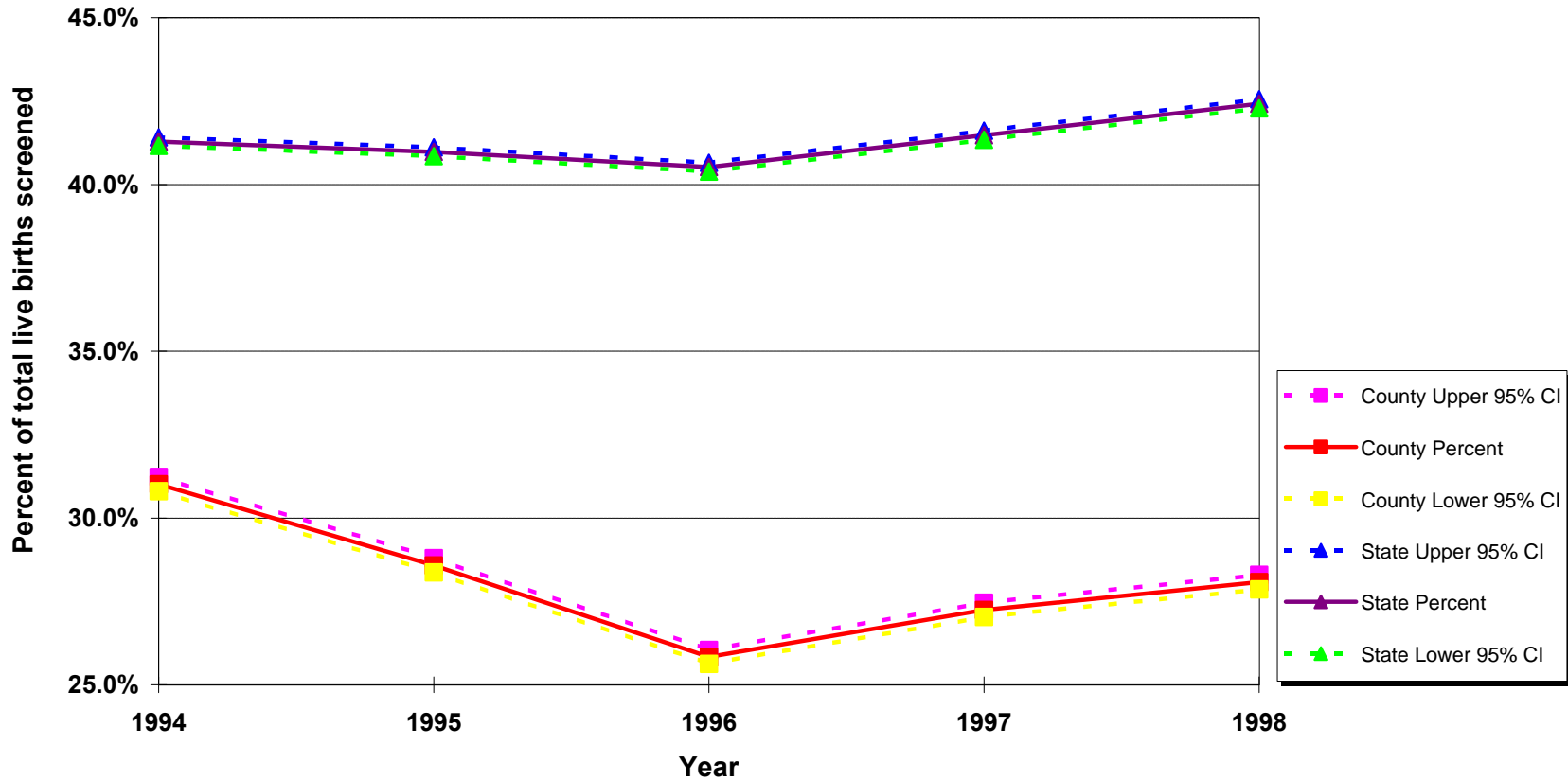


Percent of Mothers who Intend to Exclusively Breastfeed Their Infants at Hospital Discharge County vs. California 1994 - 1998



Note: These data represent in-hospital breastfeeding choices as indicated on the newborn screening form. The breastfeeding choices include: breastfed only, both formula&breastfed, breastfed only, non-breastfed and unknown. Between 1994 to 1998, the rates for formula and breastfed increased from 71% to 77%.

Source: Newborn Screening Test data prepared by the Epidemiology and Evaluation Section, Maternal and Child Health Branch, California Department of Health Services