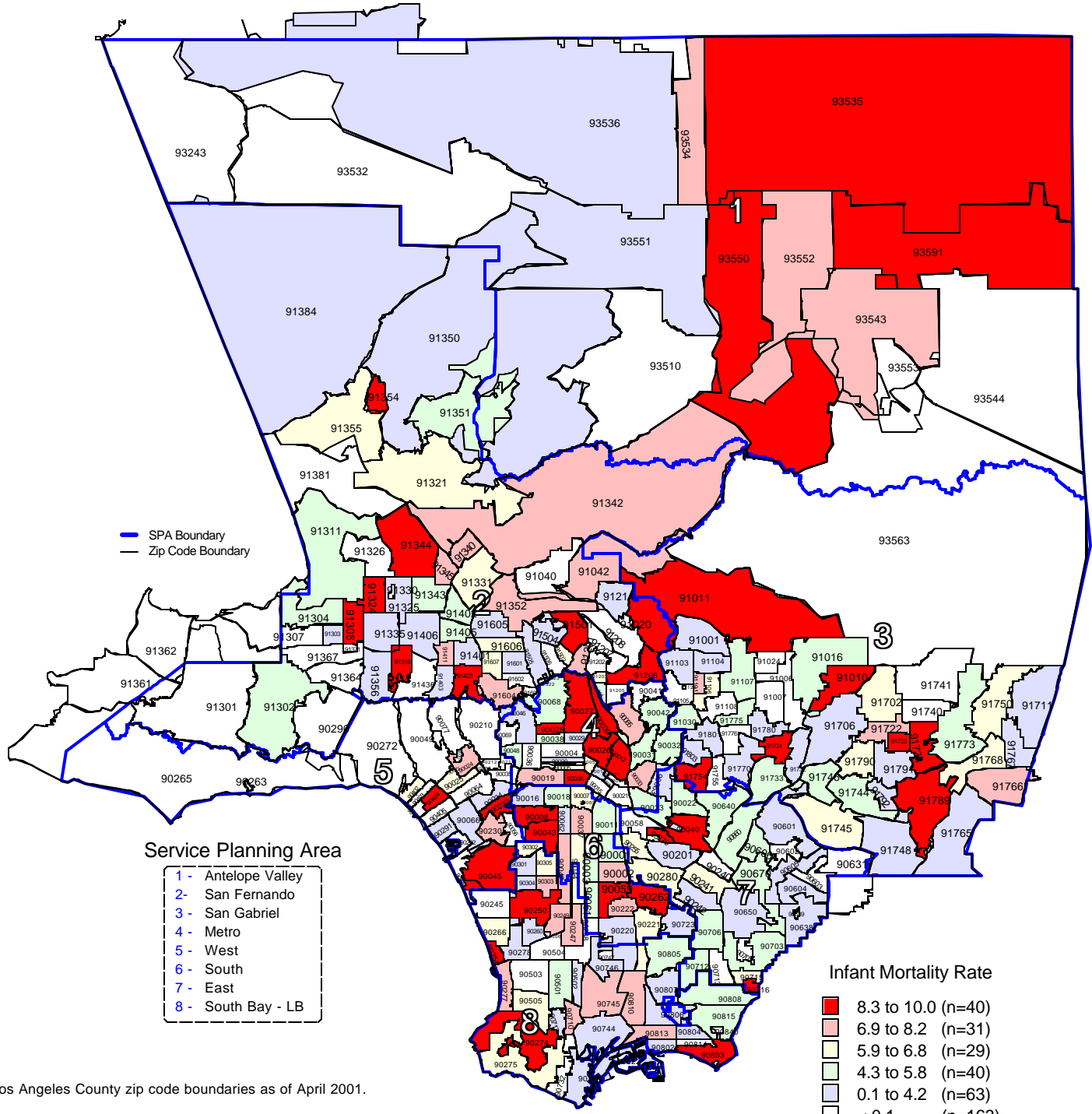


Infant Mortality Rate by Zip Code* and Service Planning Area (SPA)

Los Angeles County, 2001



* Los Angeles County zip code boundaries as of April 2001.

Total Number of live births in Los Angeles County, 2001 = 153,523

Total Number of Infant deaths in Los Angeles County, 2001= 828

Note: Infant mortality rate is defined as death occurring in less than 365 days of age per 1,000 live births

Source: California Department of Health Services
Center for Health Statistics, Vital Statistics, 2001

n = total number of zip codes in range