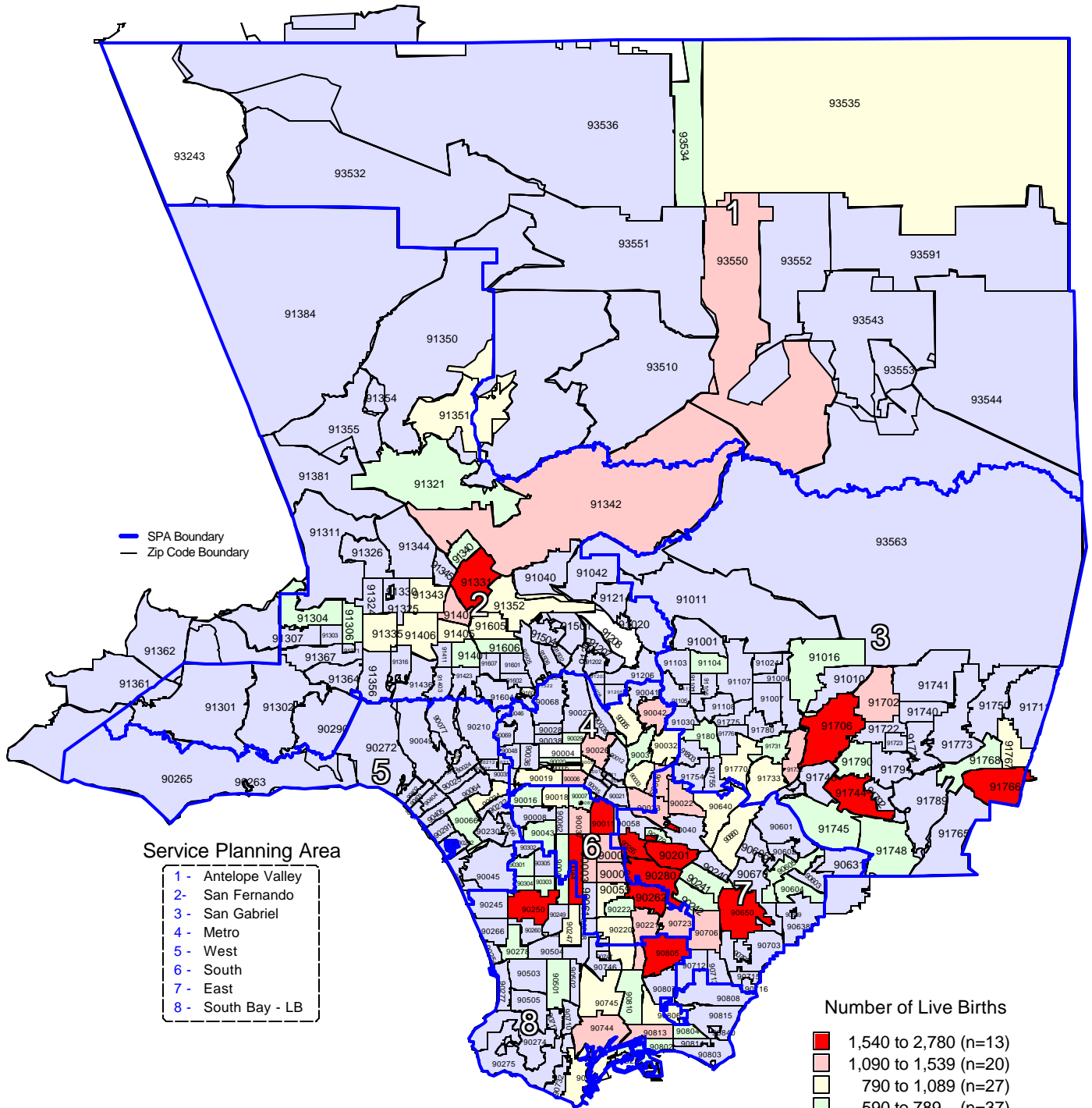


Los Angeles County - Department of Health Services  
**Number of Live Births**  
**by Zip Code\* and Service Planning Area (SPA)**  
 Los Angeles County, 2001



\* Los Angeles County zip code boundaries as of April 2001.

Total number of live births in Los Angeles County, 2001 = 153,523

Source: California Department of Health Services  
 Center for Health Statistics, Vital Statistics, 2001

n = total number of zip codes in range