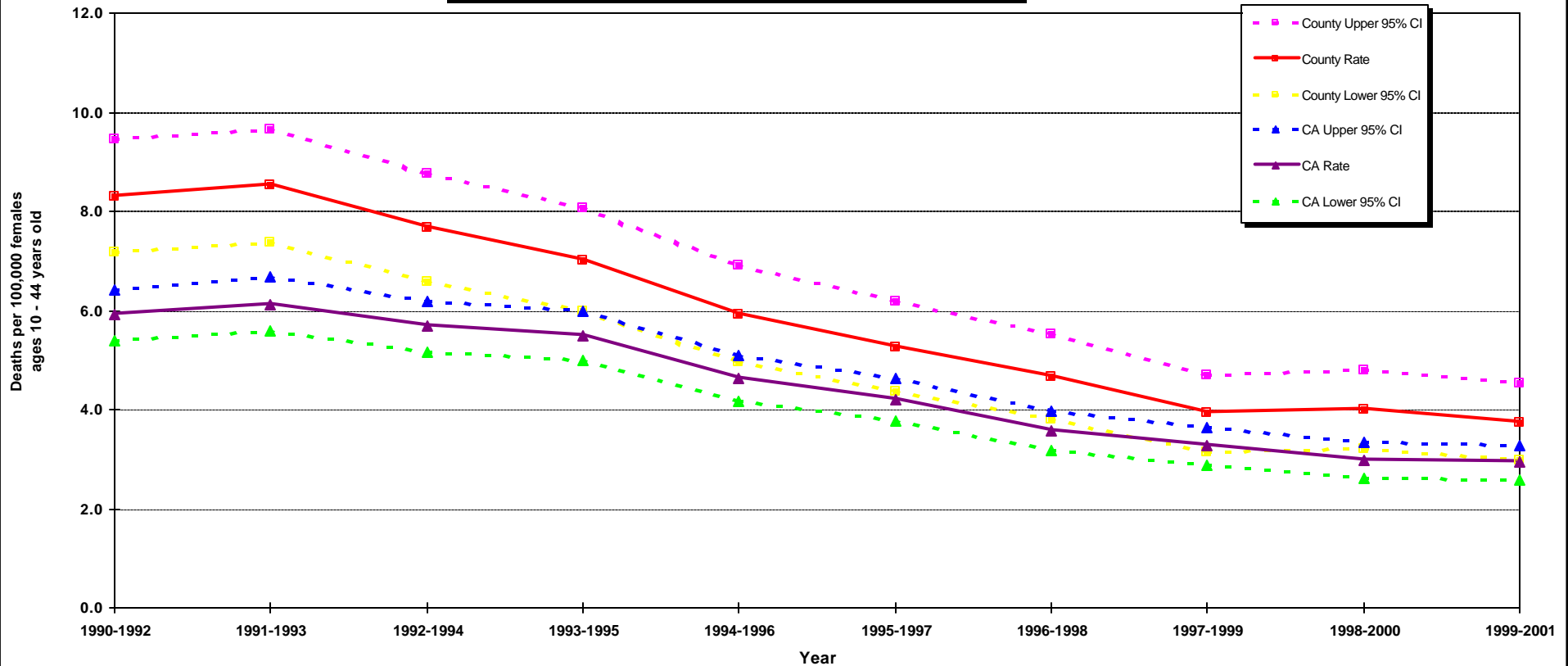


### Deaths Due to Assaultive Injuries (Homicides) per 100,000 Females Ages 10 - 44 California vs. Los Angeles County Three-Year Averages 1990-2001



**Note:** Because there is no domestic violence-specific external cause of injury (E-Code) in the current International Classification of Diseases, (ICD) codebook, the numerator in this template reflects deaths due to all types of assaults except data for California 2000. Prior to 1999, ICD-9 codes E960-E969 were used; after 1999, ICD-10 codes X85-Y09 and Y87.1 were used

\* Data from California Department of Health Services, Epidemiology and Prevention for Injury Control (EPIC) Branch does not include ICD 10 code Y87.1 for assault (homicide) by all other and unspecified means and their sequelae.

**Sources:** California Department of Health Services, Center for Health Statistics, Vital Statistics, 1990-2001  
Denominator data: California Department of Finance, "Race/Ethnic Population with Age and Sex Detail, 1970-2040," Sacramento, California, December 1998