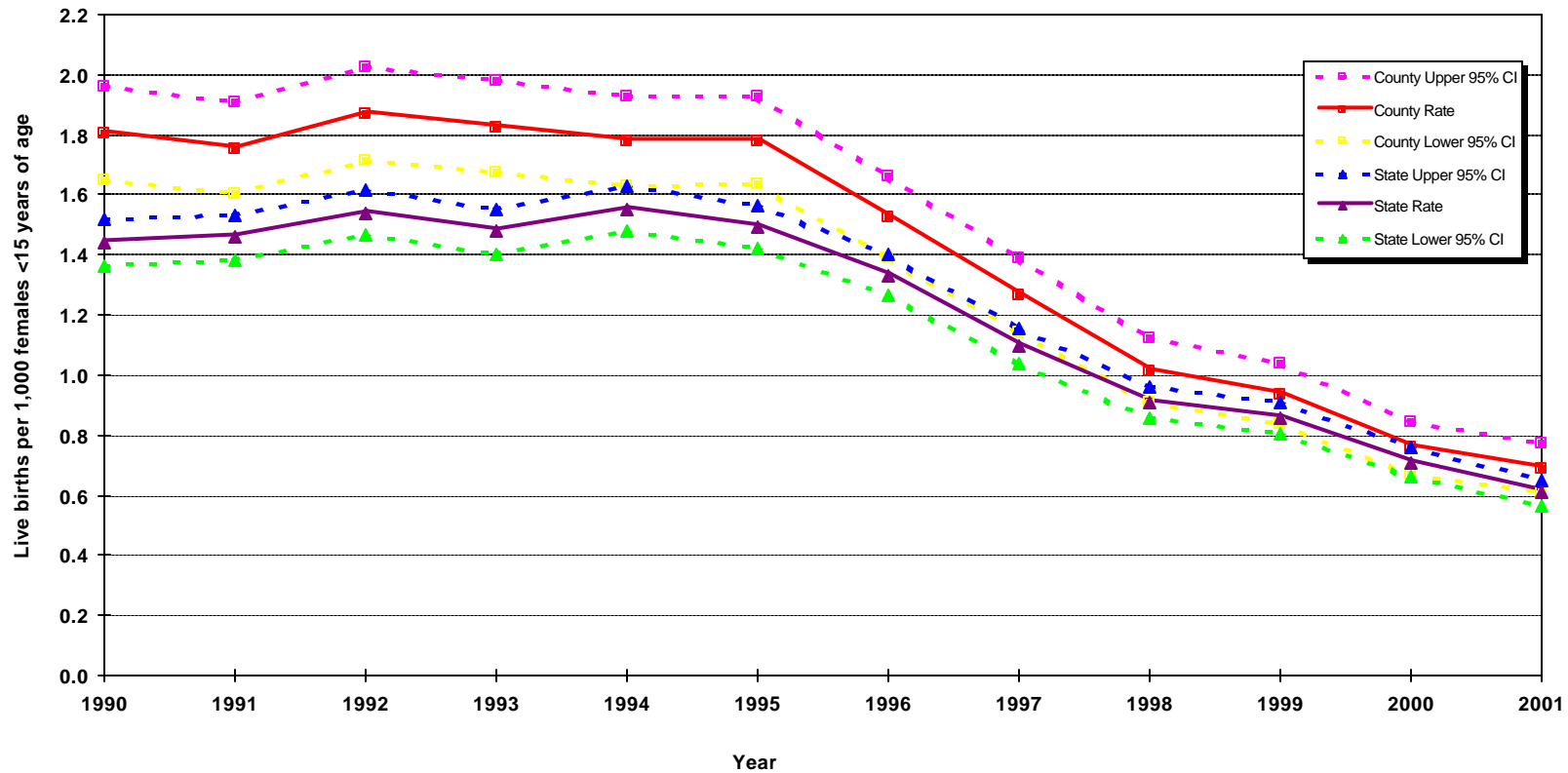


Live Births per 1,000 Adolescent Females Less Than 15 Years of Age California vs. Los Angeles County, 1990 - 2001



Note: This indicator addresses live births as opposed to pregnancies.

Prior to 2000, "Fertility Rate among teen girls" was labeled as "Teen Birth Rate"

Sources: California Department of Health Services, Center for Health Statistics, Vital Statistics, 1990-2001

Denominator data: California Department of Finance, "Race/Ethnic Population with Age and Sex Detail, 1970-2040,"

Sacramento, California, December 1998