

BREAST FEEDING

TITLE V INDICATOR TEMPLATES

INDICATOR: Percent of mothers who intend to exclusively breastfeed their infants at hospital discharge

NUMERATOR: Number of mothers who express their intent to exclusively breastfeed their infant at hospital discharge, by place of residence

DENOMINATOR: Total number of live births for whom the newborn genetic screening form is completed, by place of residence

HEALTHY PEOPLE 2010 OBJECTIVE:

Increase to at least 75% the proportion of mothers who breast-feed their babies in the early post-partum period. (Objective 16-19)

RISK FACTORS FOR NOT INTENDING TO BREASTFEED:

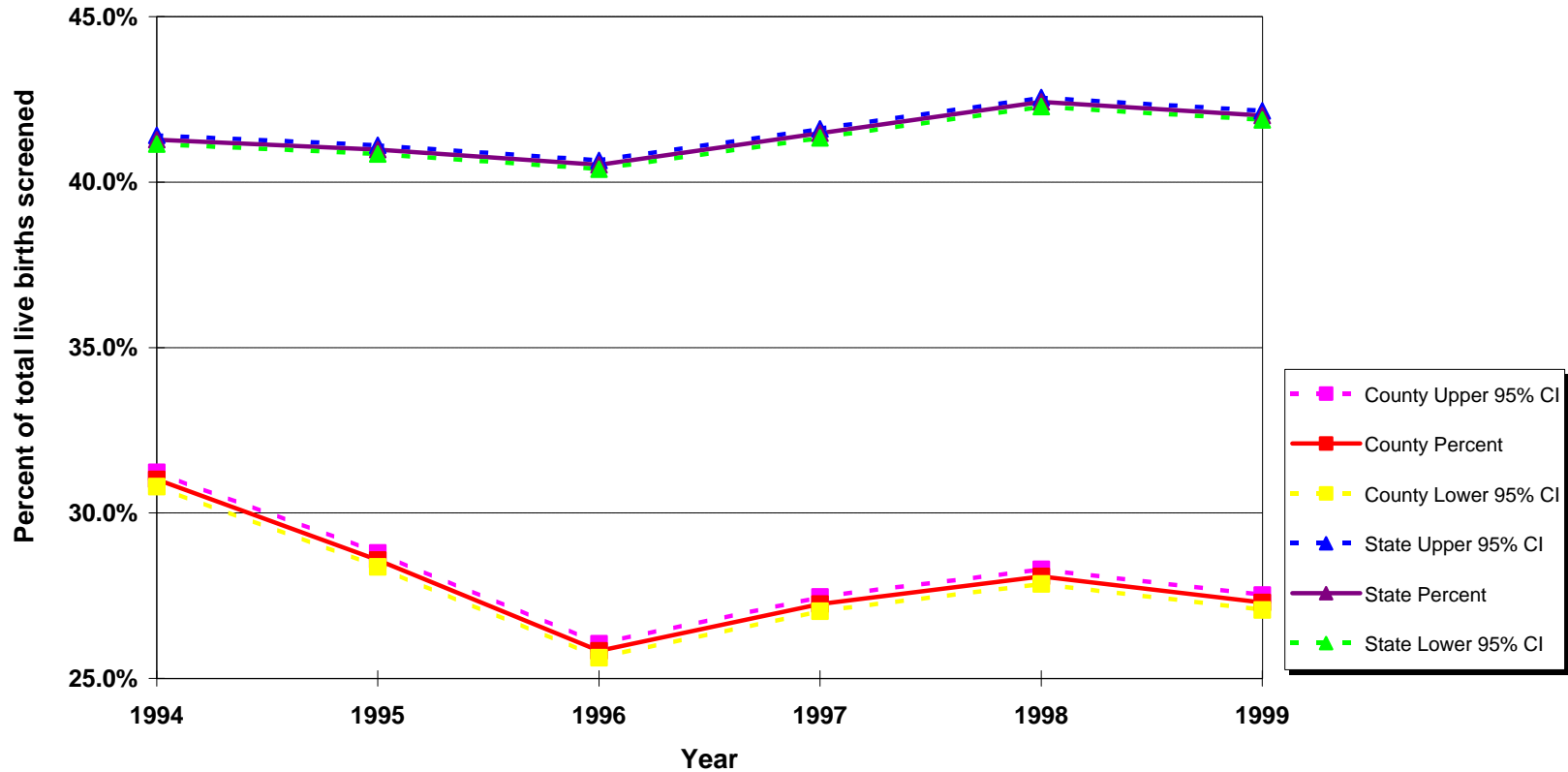
Working mothers, lack of prenatal care, lack of prenatal WIC services, lower maternal education level, low income, Southeast Asian ethnicity, black race, less than 20 years of age.

Year	California				LA County				DENOMINATOR: Newborns Screened	
	Number	Percent	95% Confidence Interval		Number	Percent	95% Confidence Interval			
			Lower	Upper			Lower	Upper	State	County
1994	228,343	41.3%	41.2%	41.4%	55,787	31.0%	30.8%	31.2%	553,102	179,870
1995	220,589	41.0%	40.8%	41.1%	49,775	28.6%	28.4%	28.8%	538,296	174,146
1996	213,959	40.5%	40.4%	40.7%	43,683	25.8%	25.6%	26.0%	528,033	169,077
1997	213,949	41.5%	41.3%	41.6%	44,300	27.2%	27.0%	27.5%	515,853	162,583
1998	218,116	42.4%	42.3%	42.6%	44,885	28.1%	27.9%	28.3%	514,167	159,853
1999	211,572	42.0%	41.9%	42.2%	42,299	27.3%	27.1%	27.5%	503,572	154,965

Note: These data represent in-hospital breastfeeding choices as indicated on the newborn screening form. The breastfeeding choices include: breastfed only, both formula & breastfed, breastfed only, non-breastfed and unknown. Between 1994 to 1999, the rates for any types of breastfeeding increased from 71% to 77%.

Sources: California Department of Health Services, Maternal and Child Health Branch, Epidemiology and Evaluation Section, "In-Hospital Breastfeeding Choices as Indicated on the Newborn Screening Form by Race/Ethnicity", California, 1994-1998
 California Department of Health Services, Maternal and Child Health Branch, Epidemiology and Evaluation Section, "In-Hospital Breastfeeding as Indicated on the Newborn Screening Form by Race/Ethnicity", California, 1997-1999

Percent of Mothers who Intend to Exclusively Breastfeed Their Infants at Hospital Discharge California vs. Los Angeles County 1994 - 1999



Note: These data represent in-hospital breastfeeding choices as indicated on the newborn screening form. The breastfeeding choices include: breastfed only, both formula & breastfed, breastfed only, non-breastfed and unknown. Between 1994 to 1999, the rates for any types of breastfeeding increased from 71% to 77%.

Source: California Department of Health Services, Maternal and Child Health Branch, Epidemiology and Evaluation Section, "In-Hospital Breastfeeding Choices as Indicated on the Newborn Screening Form by Race/Ethnicity", California, 1994-1998
California Department of Health Services, Maternal and Child Health Branch, Epidemiology and Evaluation Section, "In-Hospital Breastfeeding as Indicated on the Newborn Screening Form by Race/Ethnicity", California, 1997-1999