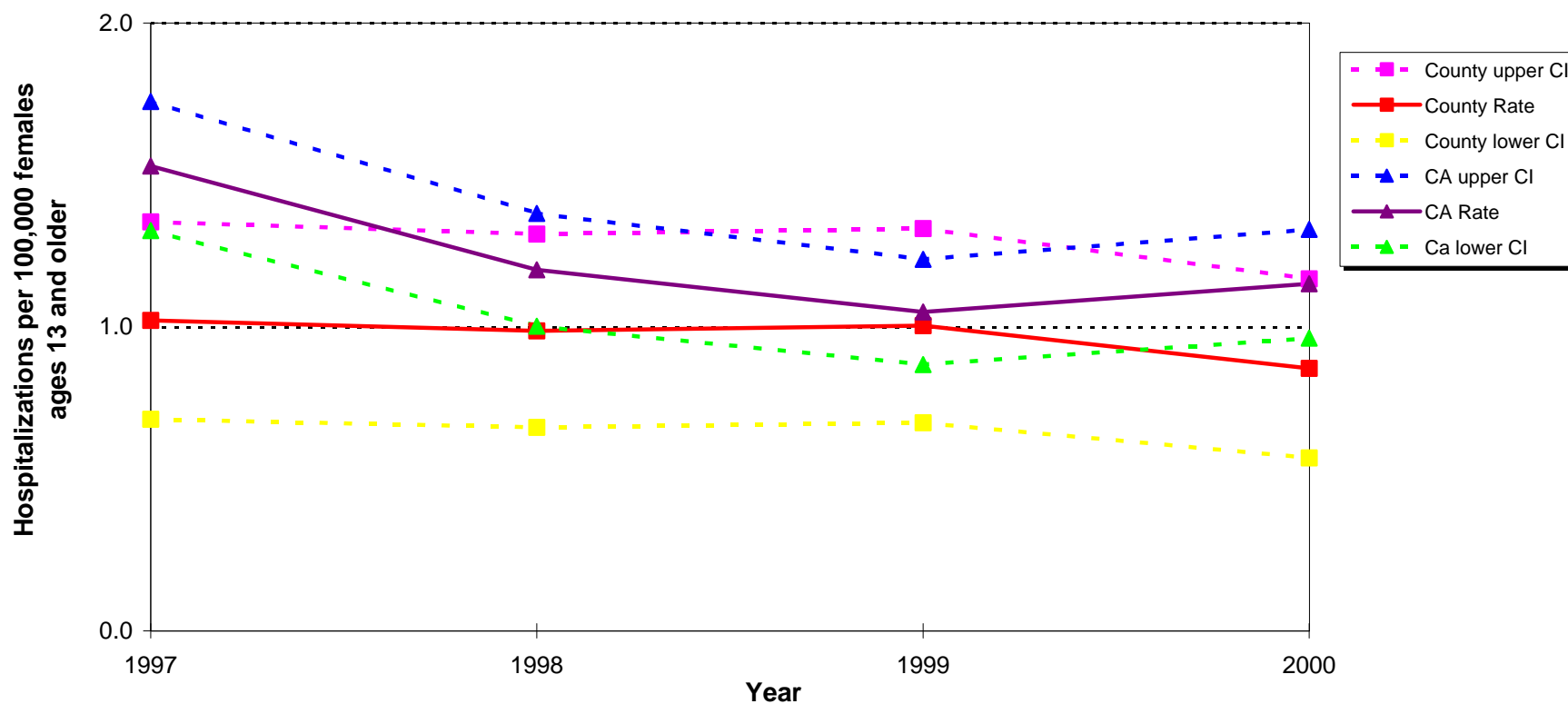


## Hospitalizations per 100,000 Females Ages 13 and older Due to Assaultive Injuries by Spouse or Partner California vs. Los Angeles County, 1997 - 2000



**Source:** California Department of Health Services, Injury Surveillance and Epidemiology Section,  
Epidemiology and Prevention for Injury Control Branch  
Denominator data: California Department of Finance, "Race/Ethnic Population with Age and Sex Detail, 1970-2040,"  
Sacramento, California, December 1998