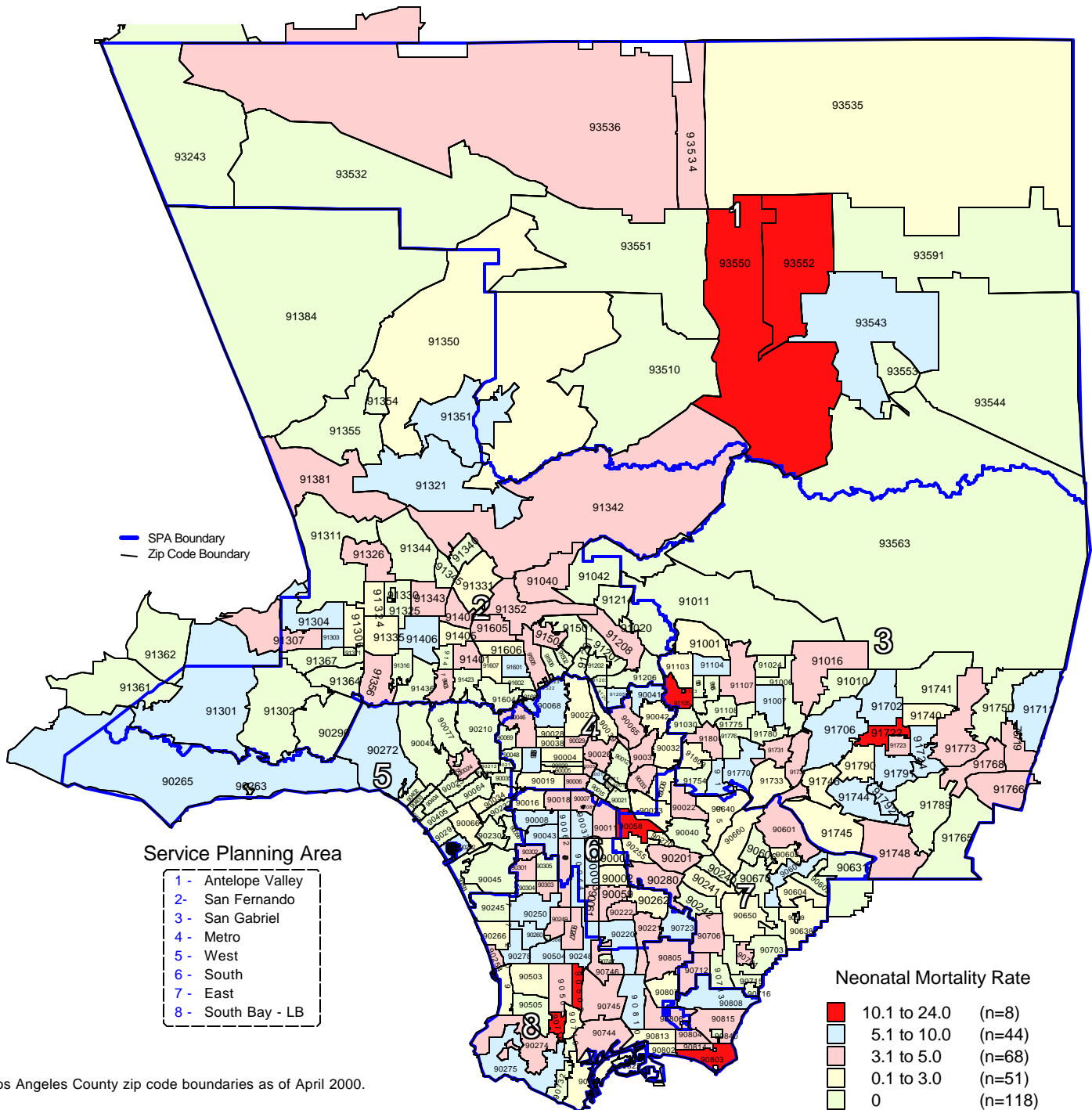


Neonatal Mortality Rate by Zip Code* and Service Planning Area (SPA)

Los Angeles County, 2000



* Los Angeles County zip code boundaries as of April 2000.

Total Number of live births in Los Angeles County, 2000 = 157,391
Total Number of neonatal deaths in Los Angeles County, 2000 = 531

Note: Neonatal mortality rate is defined as deaths occurring less than 28 days per 1,000 live births

Source: California Department of Health Services
Center for Health Statistics, Vital Statistics, 2000

n = total number of zip codes in range