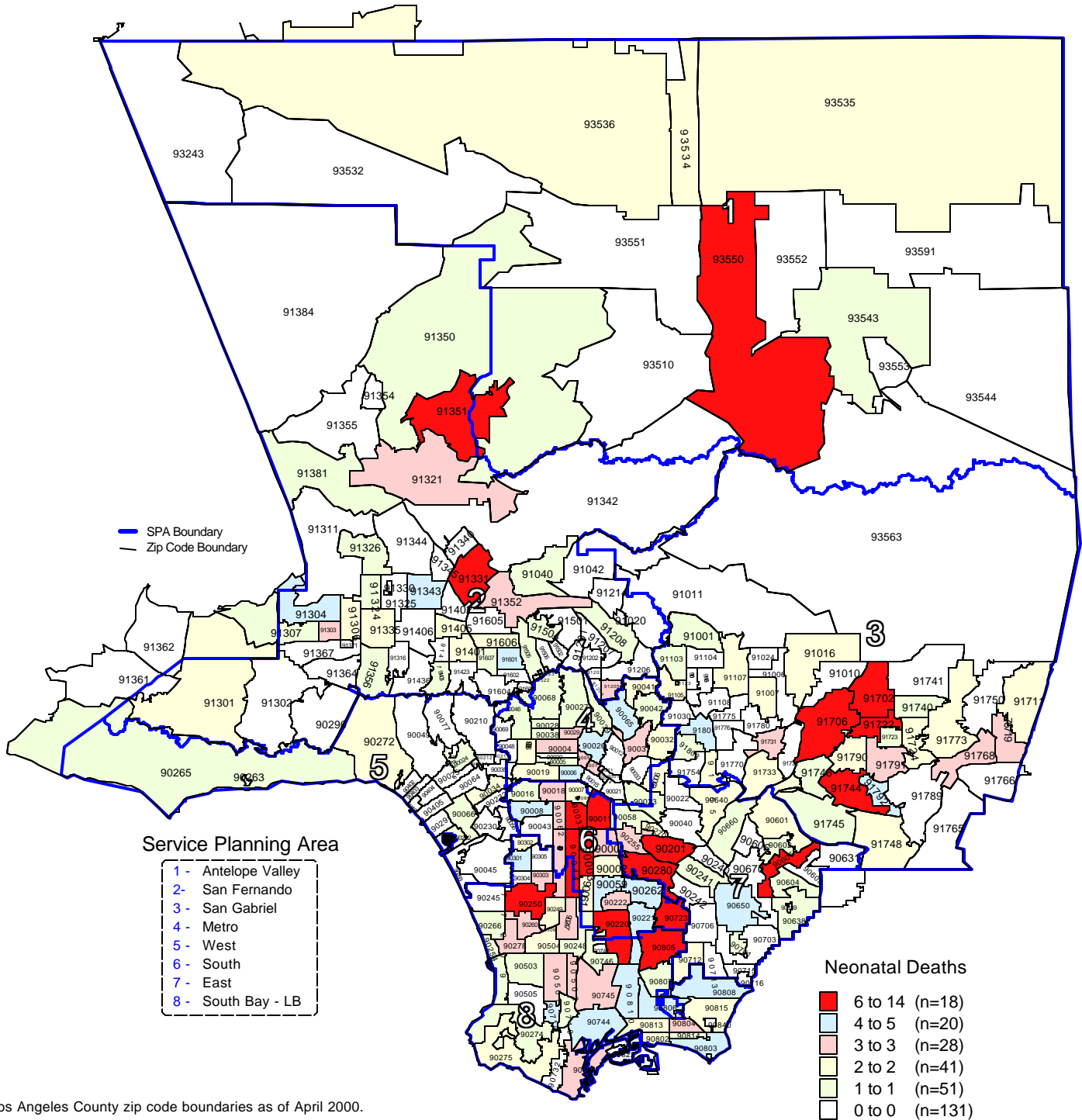


Los Angeles County - Department of Health Services
Number of Neonatal Deaths
by Zip Code* and Service Planning Area (SPA)

Los Angeles County, 2000



* Los Angeles County zip code boundaries as of April 2000.

Total Number of live births in Los Angeles County, 2000 = 157,391

Total Number of neonatal deaths in Los Angeles County, 2000 = 531

Note: Neonatal deaths are defined as deaths occurring less than 28 days

Source: California Department of Health Services

Center for Health Statistics, Vital Statistics, 2000

n = total number of zip codes in range