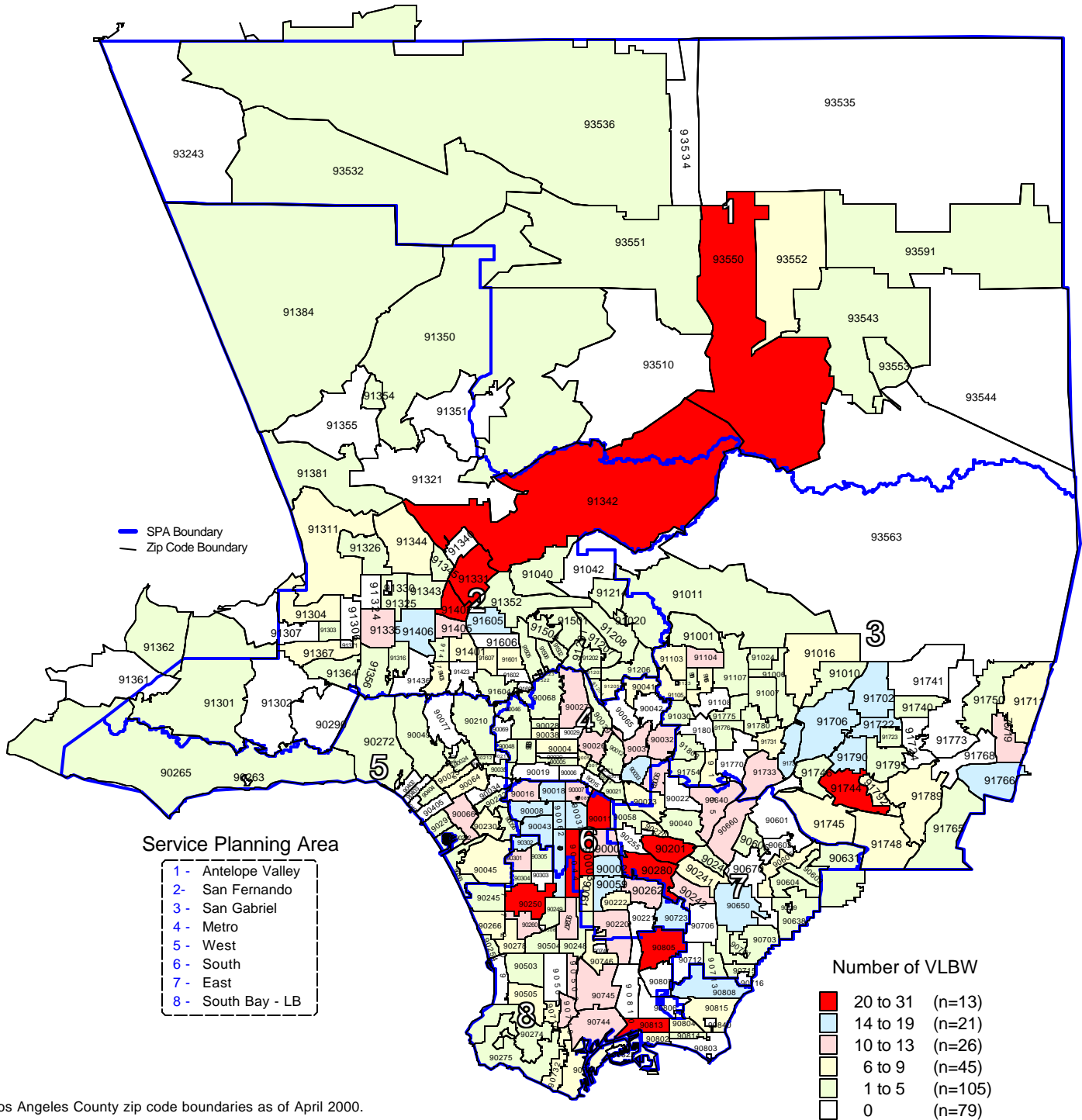


Los Angeles County - Department of Health Services
**Number of Very Low Birthweight (VLBW) Live Births
 by Zip Code* and Service Planning Area (SPA)**

Los Angeles County, 2000



* Los Angeles County zip code boundaries as of April 2000.

Total Number of live births in Los Angeles County, 2000 = 157,391
 Note: Very low birthweight is defined as weight less than 1,500 grams at birth

n = total number of zip codes in range

Source: California Department of Health Services
 Center for Health Statistics, Vital Statistics, 2000