

# **MATERNAL MORTALITY**

**TITLE V PERINATAL INDICATORS - 2017**

---

**INDICATOR:** Maternal Mortality Rate

**DEFINITION:** Death from obstetric causes <=42 days postpartum, per 100,000 live births

**NUMERATOR:** The number of maternal deaths with the underlying causes of the death as identified by ICD-9 codes 630-676, or by ICD-10 codes A34, O00-O99, by place of residence, in a calendar year

**DENOMINATOR:** The total number of live births, by place of residence, in a calendar year

**HEALTHY PEOPLE 2020 OBJECTIVE:**

Reduce maternal deaths to no more than 11.4 per 100,000 live births.  
(Baseline: 12.7 per 100,000 live births in 2007) (Objective MICH-5)

**RISK FACTORS:**

Race/ethnicity; maternal age over thirty; high parity; late entry into prenatal care; lack of comprehensive prenatal care; tobacco use during pregnancy; alcohol/substance abuse during pregnancy

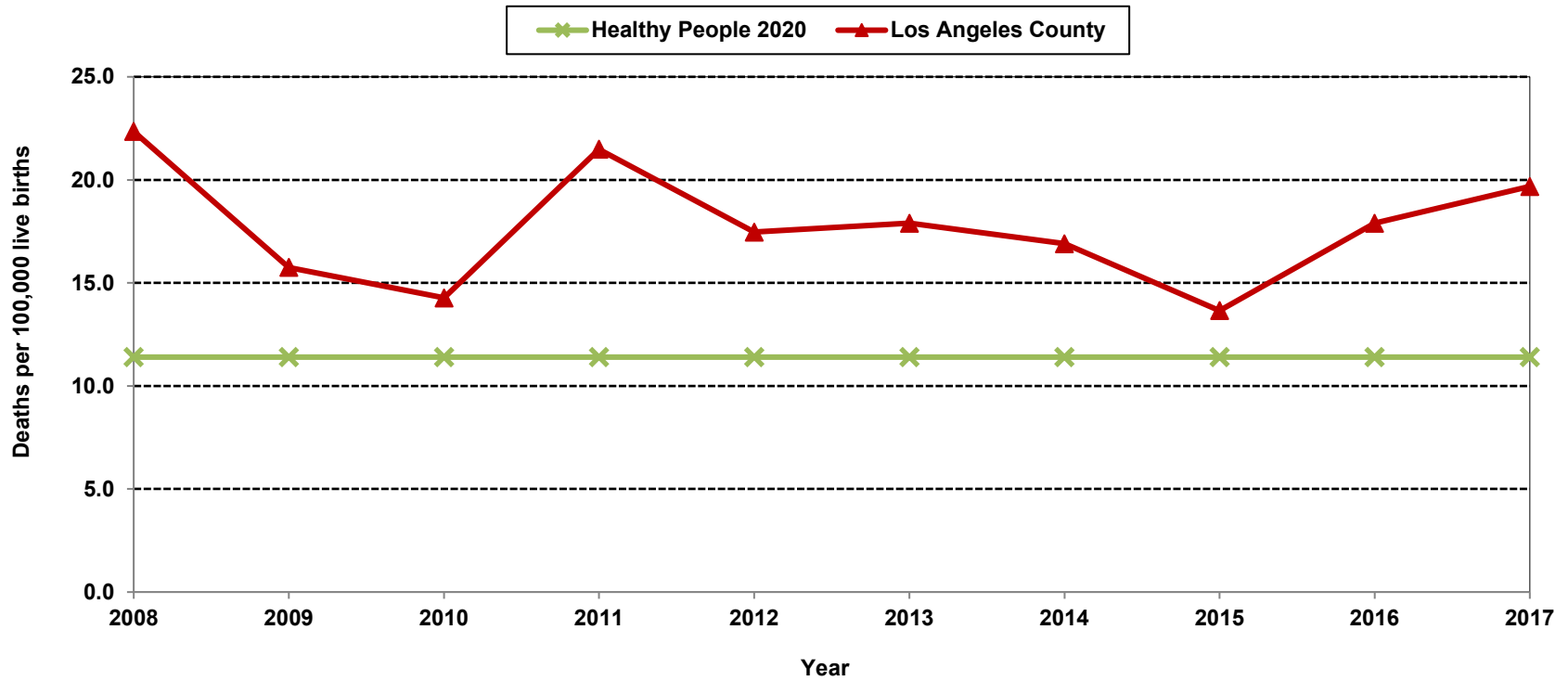
Year	Los Angeles County			
	Maternal Mortality		95% Confidence Interval	
	Deaths	Rate	Lower	Upper
2008	33	22.3	14.7	30.0
2009	22	15.8	9.2	22.3
2010	19	14.3	7.9	20.7
2011	28	21.5	13.5	29.4
2012	23	17.5	10.3	24.6
2013	23	17.9	10.6	25.2
2014	22	16.9	9.8	24.0
2015	17	13.7	7.2	20.1
2016	22	17.9	10.4	25.4
2017	23	19.7	11.6	27.7

Denominator: Live Births	
Year	LA County
2008	147,684
2009	139,679
2010	133,160
2011	130,313
2012	131,697
2013	128,523
2014	130,150
2015	124,507
2016	122,941
2017	116,850

Note: "Maternal Mortality Rate" is defined as the number of maternal deaths due to pregnancy, childbirth and the puerperium per 100,000 live births as identified by ICD-10 codes A34, O00-O99.

Source: California Department of Public Health, Birth and Death Statistical Files, 2008-2017

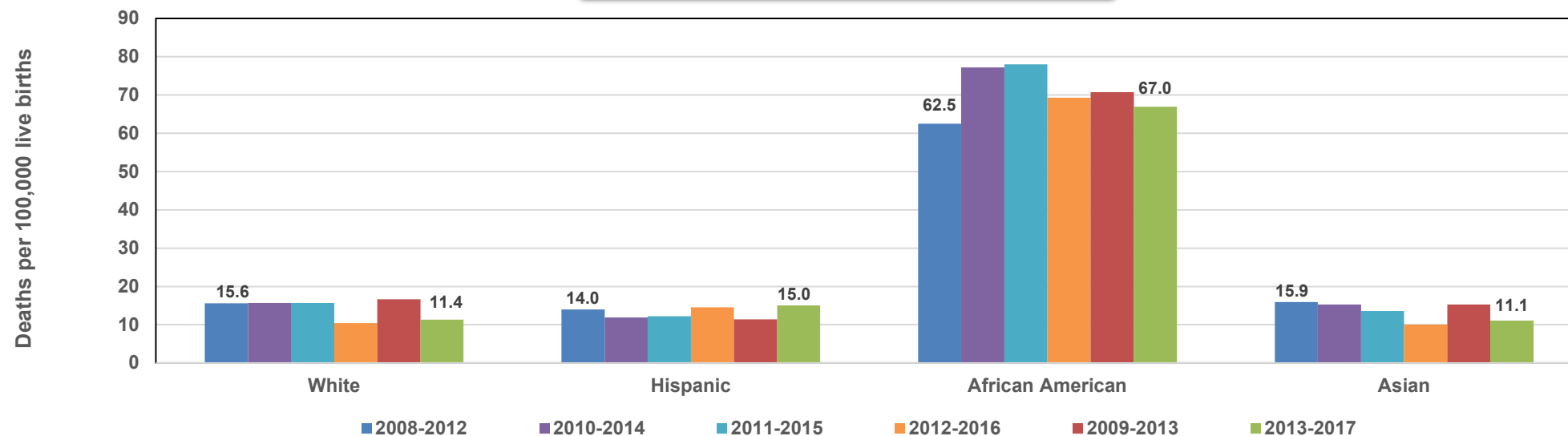
**Maternal Mortality Rates (per 100,000 live births)  
Los Angeles County, 2008-2017**



Notes: "Maternal Mortality Rate" is defined as the number of maternal deaths due to pregnancy, childbirth and the puerperium per 100,000 live births as identified by ICD-10 codes A34, O00-O99.

Source: California Department of Public Health, Birth and Death Statistical Files, 2008-2017

**Maternal Mortality Rates by Race/Ethnicity  
Los Angeles County  
5-Year Moving Averages, 2008-2017**

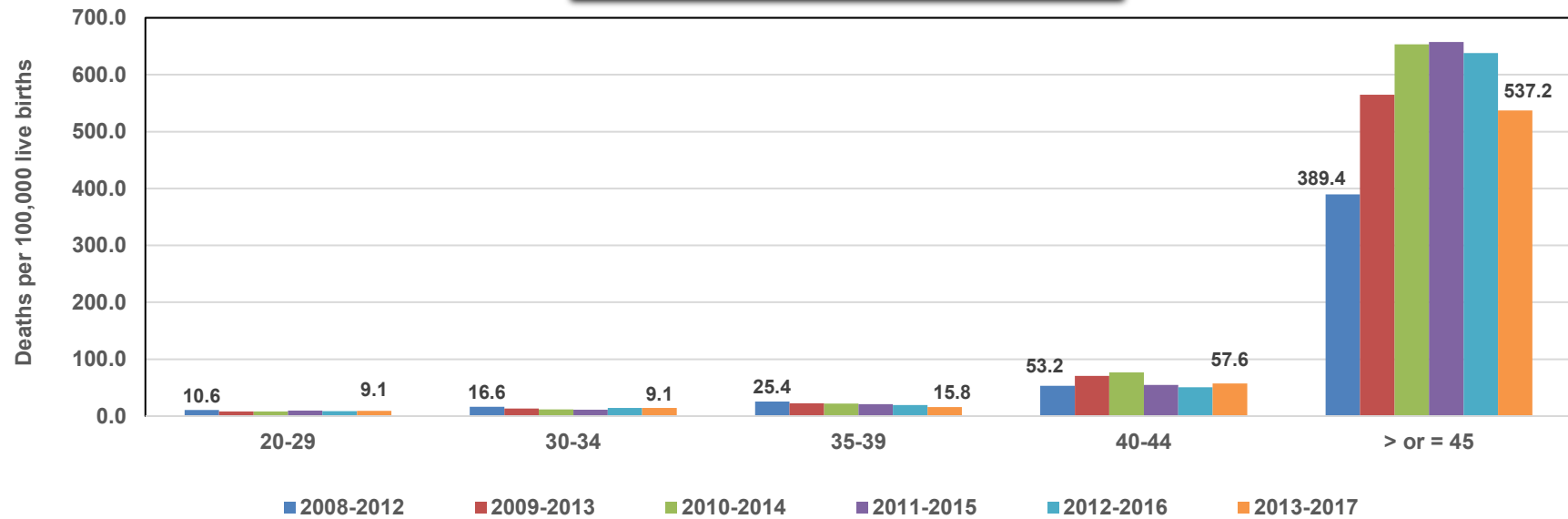


Years	White			Hispanic			African American			Asian		
	Total Deaths	Total Live Births	MM Rate	Total Deaths	Total Live Births	MM Rate	Total Deaths	Total Live Births	MM Rate	Total Deaths	Total Live Births	MM Rate
<b>2008-2012</b>	18	115,582	15.6	58	414,549	14.0	32	51,160	62.5	13	81,822	15.9
<b>2009-2013</b>	19	114,346	16.6	45	394,551	11.4	35	49,463	70.8	13	85,031	15.3
<b>2010-2014</b>	18	114,523	15.7	45	379,475	11.9	37	47,943	77.2	14	91,589	15.3
<b>2011-2015</b>	18	114,805	15.7	45	367,827	12.2	36	46,138	78.0	13	95,533	13.6
<b>2012-2016</b>	12	114,929	10.4	52	357,500	14.5	31	44,759	69.3	10	99,406	10.1
<b>2013-2017</b>	13	114,491	11.4	52	345,692	15.0	29	43,309	67.0	11	98,896	11.1

Note: "Maternal Mortality Rate" is defined as the number of maternal deaths due to pregnancy, childbirth and the puerperium per 100,000 live births as identified by ICD-10 codes A34, O00-O99.

Source: California Department of Public Health, Birth and Death Statistical Files, 2008-2017

**Maternal Mortality Rates by Age Group  
Los Angeles County  
5-Year Moving Averages, 2008-2017**

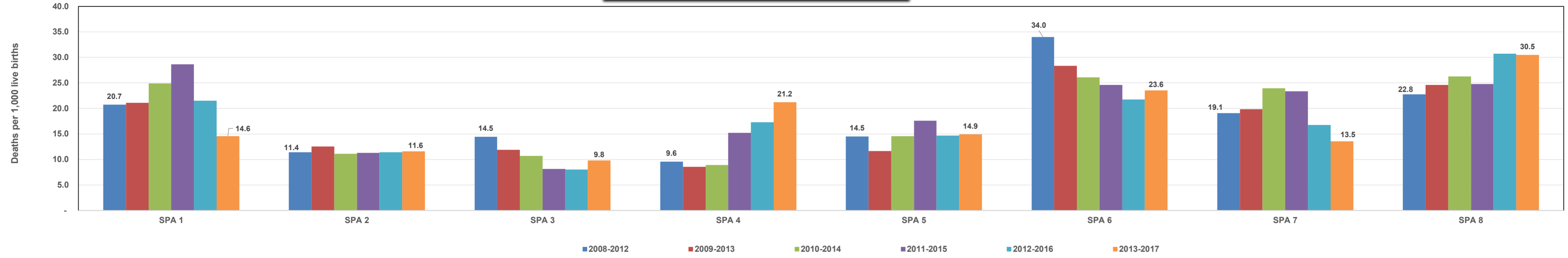


20-29 Yrs.			30-34 Yrs.			35-39 Yrs.			40-44 Yrs.			> or = 45 Yrs.		
Total Deaths	Total Live Births	MM Rate	Total Deaths	Total Live Births	MM Rate	Total Deaths	Total Live Births	MM Rate	Total Deaths	Total Live Births	MM Rate	Total Deaths	Total Live Births	MM Rate
33	311,977	10.6	29	174,488	16.6	27	106,413	25.4	15	28,198	53.2	9	2,311	389.4
25	298,667	8.4	23	174,864	13.2	24	106,228	22.6	20	28,304	70.7	13	2,301	565.0
23	289,847	7.9	21	178,096	11.8	24	108,145	22.2	22	28,715	76.6	15	2,296	653.3
27	281,732	9.6	20	180,576	11.1	23	110,202	20.9	16	29,150	54.9	16	2,434	657.4
24	274,486	8.7	26	182,765	14.2	22	112,605	19.5	15	29,487	50.9	16	2,507	638.2
24	263,688	9.1	26	181,827	14.3	18	113,939	15.8	17	29,515	57.6	14	2,606	537.2

Note: "Maternal Mortality Rate" is defined as the number of maternal deaths due to pregnancy, childbirth and the puerperium per 100,000 live births as identified by ICD-10 codes A34, O00-O99.

Source: California Department of Public Health, Birth and Death Statistical Files, 2008-2017

Maternal Mortality Rates by Service Planning Area (SPA)  
Los Angeles County  
5-Year Moving Average, 2008-2017



Years	SPA 1			SPA 2			SPA 3			SPA 4			SPA 5			SPA 6			SPA 7			SPA 8		
	Total Deaths	Total Live Births	MM Rate	Total Deaths	Total Live Births	MM Rate	Total Deaths	Total Live Births	MM Rate	Total Deaths	Total Live Births	MM Rate	Total Deaths	Total Live Births	MM Rate	Total Deaths	Total Live Births	MM Rate	Total Deaths	Total Live Births	MM Rate	Total Deaths	Total Live Births	MM Rate
2008-2012	6	28,926	20.7	15	131,498	11.4	17	117,573	14.5	7	72,989	9.6	5	34,457	14.5	34	99,938	34.0	18	94,363	19.1	23	101,079	22.8
2009-2013	6	28,452	21.1	16	127,712	12.5	14	117,534	11.9	6	69,937	8.6	<5	34,397	N/C	27	95,308	28.3	18	90,605	19.9	24	97,575	24.6
2010-2014	7	28,105	24.9	14	125,739	11.1	13	121,268	10.7	6	67,502	8.9	5	34,380	14.5	24	92,069	26.1	21	87,625	24.0	25	95,061	26.3
2011-2015	8	27,944	28.6	14	124,100	11.3	10	122,669	8.2	10	65,789	15.2	6	34,106	17.6	22	89,447	24.6	20	85,555	23.4	23	92,899	24.8
2012-2016	6	27,881	21.5	14	122,924	11.4	10	124,480	8.0	11	63,650	17.3	5	34,054	14.7	19	87,369	21.7	14	83,473	16.8	28	91,054	30.8
2013-2017	<5	27,426	N/C	14	120,831	11.6	12	122,404	9.8	13	61,322	21.2	5	33,572	14.9	20	84,895	23.6	11	81,182	13.5	27	88,536	30.5

Note: "Maternal Mortality Rate" is defined as the number of maternal deaths due to pregnancy, childbirth and the puerperium per 100,000 live births as identified by ICD-10 codes A34, O00-O99.  
Source: California Department of Public Health, Birth and Death Statistical Files, 2008-2017