

Low Birthweight

TITLE V INDICATOR TEMPLATE

INDICATOR: Percent of Low Birthweight

DEFINITION: The percent of live births weighing less than 2,500 grams

NUMERATOR: The number of live births weighing less than 2,500 grams, by place of residence, in a calendar year

DENOMINATOR: The total number of live births, by place of residence, in a calendar year

HEALTHY PEOPLE 2010 OBJECTIVE:
 Reduce low birthweight births to an incidence of no more than 5 percent of live births.
 (Baseline: 7.6 percent in 1998) (Objective 16-10a)

RISK FACTORS: Young or old maternal age; low income; low maternal education level; race/ethnicity (African American, Puerto Rican, Southeast Asian); high parity; short interpregnancy level; multiple gestation; unintended pregnancy; history of low birthweight; poor reproductive history; intrauterine growth retardation; preterm birth; prior preterm birth; late entry into prenatal care; lack of comprehensive prenatal care; low pregnancy weight; tobacco use during pregnancy; alcohol/substance abuse during pregnancy; low pregnancy weight gain; placenta previa; premature rupture of the membrane; stress during pregnancy; strenuous exertion during pregnancy

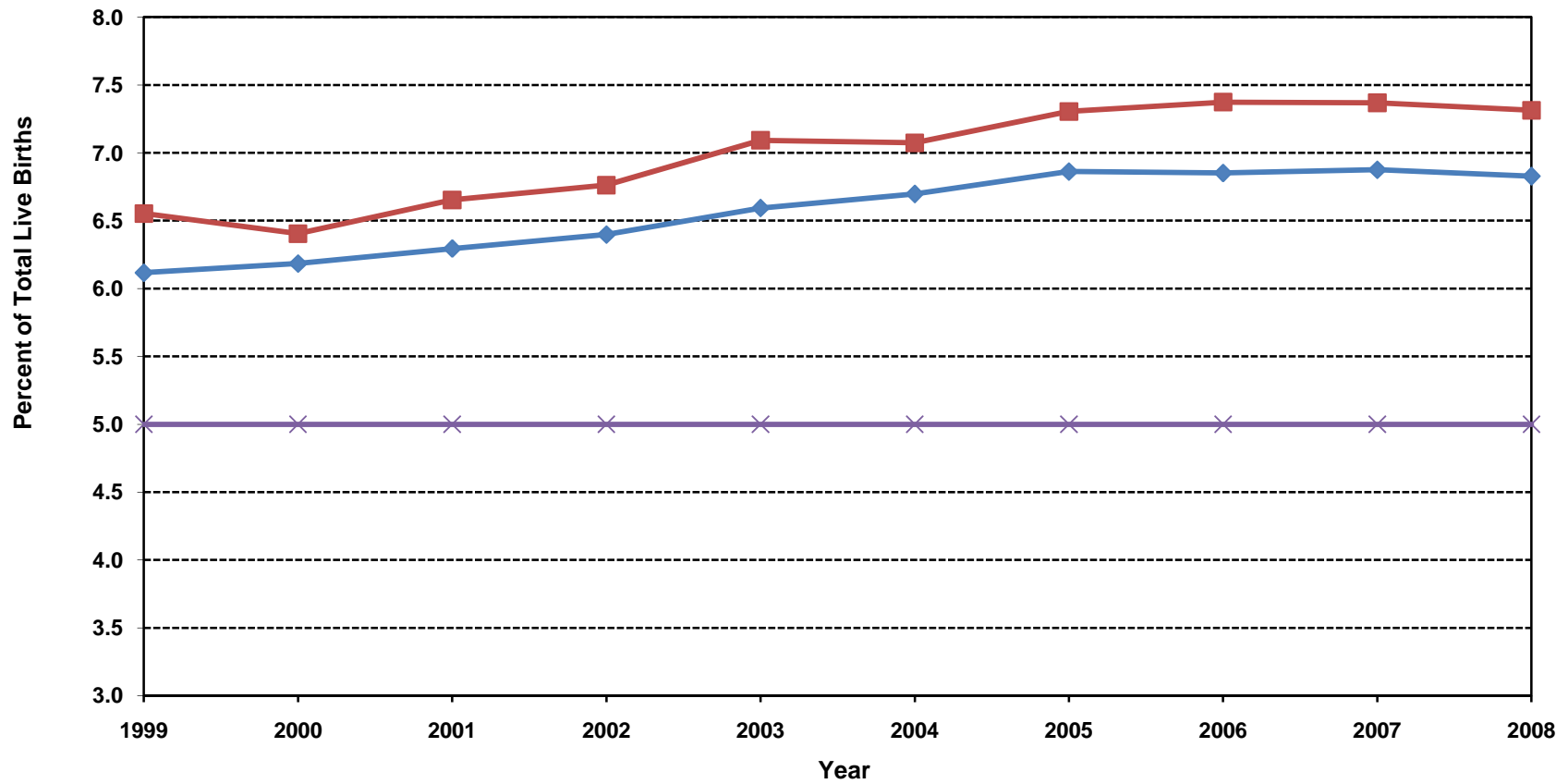
Year	California				Los Angeles County			
	Low Birthweight		95% Confidence Interval		Low Birthweight		95% Confidence Interval	
	Number	Percent	Lower	Upper	Number	Percent	Lower	Upper
1999	31,686	6.1	6.1	6.2	10,232	6.6	6.4	6.7
2000	32,853	6.2	6.1	6.2	10,080	6.4	6.3	6.5
2001	33,196	6.3	6.2	6.4	10,213	6.7	6.5	6.8
2002	33,859	6.4	6.3	6.5	10,222	6.8	6.6	6.9
2003	35,659	6.6	6.5	6.7	10,794	7.1	7.0	7.2
2004	36,481	6.7	6.6	6.8	10,717	7.1	6.9	7.2
2005	37,653	6.9	6.8	6.9	10,984	7.3	7.2	7.4
2006	38,517	6.9	6.8	6.9	11,196	7.4	7.2	7.5
2007	38,923	6.9	6.8	6.9	11,186	7.4	7.2	7.5
2008	37,663	6.8	6.8	6.9	10,800	7.3	7.2	7.4

Denominator: Live Births		
Year	California	LA County
1999	518,073	156,153
2000	531,285	157,391
2001	527,371	153,523
2002	529,245	151,167
2003	540,827	152,192
2004	544,685	151,504
2005	548,700	150,377
2006	562,157	151,837
2007	566,137	151,813
2008	551,567	147,684

Source: California Department of Public Health, Center for Health Statistics, OHIR Vital Statistics Section, 1999-2008.

**Percent of Low Birthweight
California vs. Los Angeles County, 1999-2008**

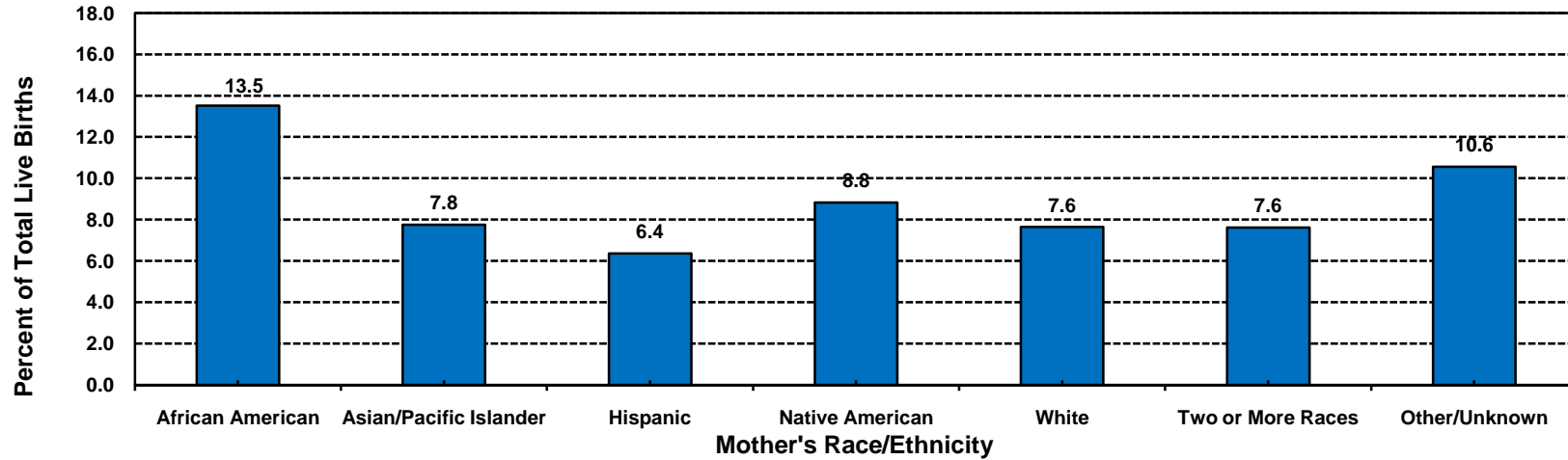
◆ California
 ■ Los Angeles County
 × Healthy People 2010



Year 2010 Objective: Reduce low birthweight births to an incidence of no more than 5 percent of live births.

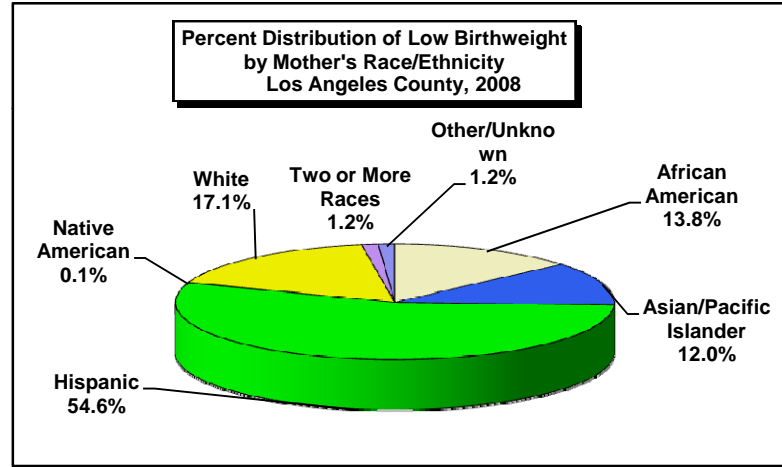
Source: California Department of Public Health, Center for Health Statistics, OHIR Vital Statistics Section, 1999-2008.

**Low Birthweight Live Births, as Percent of Total Live Births
by Mother's Race/Ethnicity
Los Angeles County, 2008**



Los Angeles County, 2008				
Mother's Race/Ethnicity	Low Birthweight		95% Confidence Interval	
	Number	Percent	Lower	Upper
African American	1,488	13.5	12.9	14.1
Asian/Pacific Islander	1,292	7.8	7.3	8.2
Hispanic	5,894	6.4	6.2	6.5
Native American	15	8.8	4.6	13.1
White	1,851	7.6	7.3	8.0
Two or More Races	133	7.6	6.4	8.9
Other/Unknown	127	10.6	8.8	12.3
Total	10,800	7.3	7.2	7.4

Total Live Births
11,016
16,667
92,643
170
24,238
1,747
1,203
147,684



Year 2010 Objective: Reduce low birthweight births to an incidence of no more than 5 percent of live births.

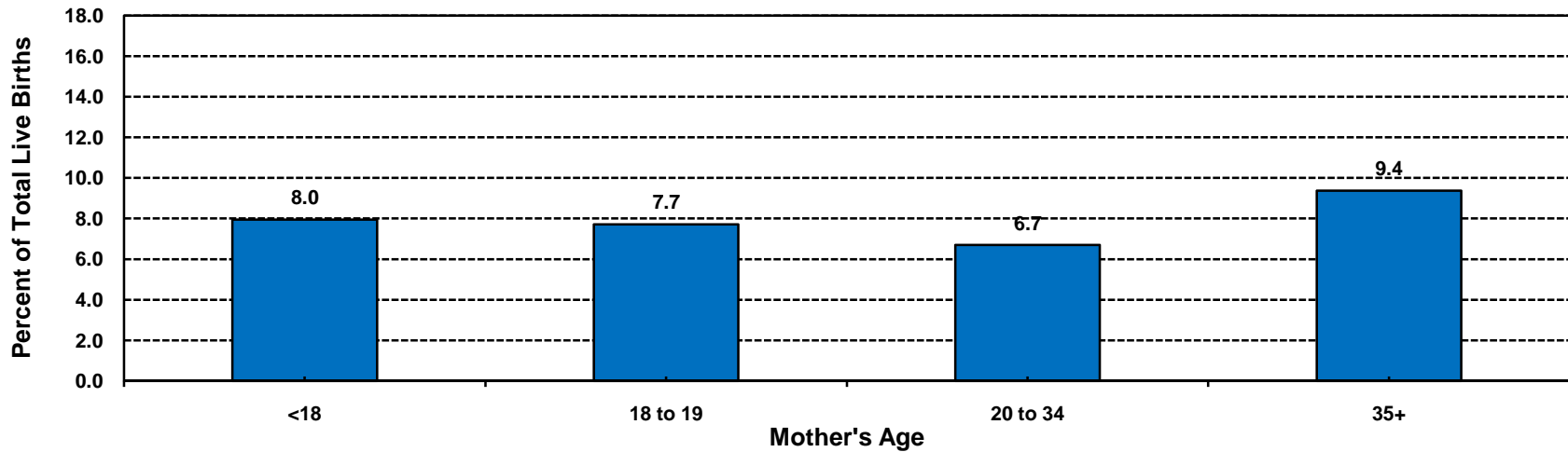
Note: Low birthweight is defined as weight less than 2,500 grams at birth.

Racial/ethnic categorization has been revised in this report; data from previous year reports may not be comparable.

African American, Asian/Pacific Islander, Native American, White and other races exclude Hispanic ethnicity. Hispanic includes any race category.

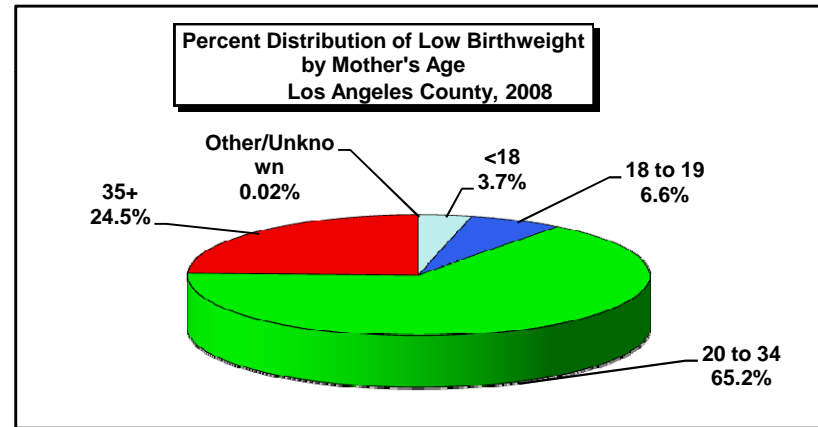
Source: California Department of Public Health, Center for Health Statistics, OHIR Vital Statistics Section, 2008.

**Low Birthweight Live Births, as Percent of Total Live Births
by Mother's Age
Los Angeles County, 2008**



Los Angeles County, 2008				
Mother's Age	Low Birthweight		95% Confidence Interval	
	Number	Percent	Lower	Upper
<18	402	8.0	7.2	8.7
18 to 19	711	7.7	7.2	8.3
20 to 34	7,037	6.7	6.5	6.8
35+	2,648	9.4	9.0	9.7
Other/Unknown	<5	N/C	N/C	N/C
Total	10,800	7.3	7.2	7.4

Total Live Births
5,055
9,223
105,139
28,252
15
147,684



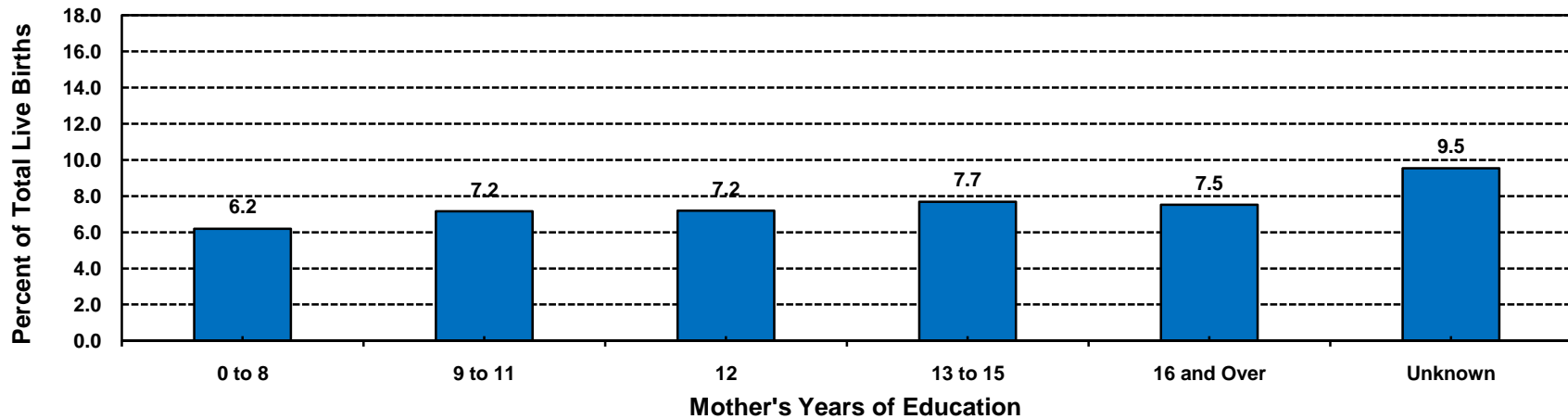
Year 2010 Objective: Reduce low birthweight births to an incidence of no more than 5 percent of live births.

Note: Low birthweight is defined as weight less than 2,500 grams at birth.

Numbers fewer than 5 are shown as "<5". Rates are not calculated (N/C) if number is fewer than five.

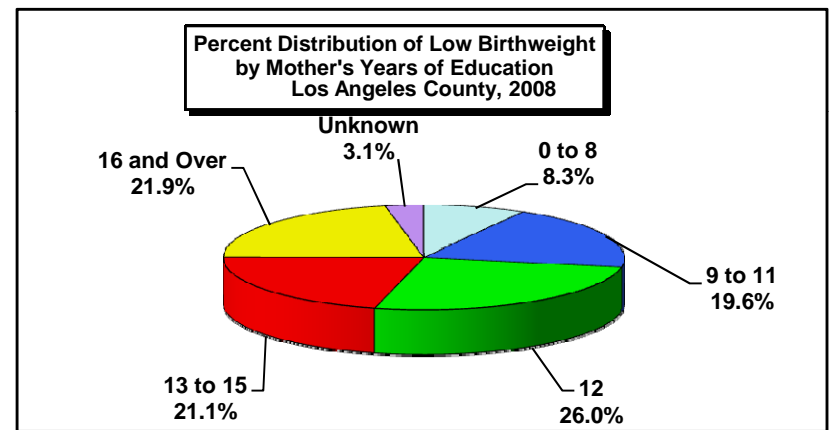
Source: California Department of Public Health, Center for Health Statistics, OHIR Vital Statistics Section, 2008.

**Low Birthweight Live Births, as Percent of Total Live Births
by Mother's Years of Education
Los Angeles County, 2008**



Los Angeles County, 2008				
Mother's Years of Education	Low Birthweight		95% Confidence Interval	
	Number	Percent	Lower	Upper
0 to 8	895	6.2	5.8	6.6
9 to 11	2,122	7.2	6.9	7.5
12	2,808	7.2	6.9	7.4
13 to 15	2,282	7.7	7.4	8.0
16 and Over	2,360	7.5	7.2	7.8
Unknown	333	9.5	8.6	10.5
Total	10,800	7.3	7.2	7.4

Total Live Births
14,443
29,639
39,056
29,669
31,386
3,491
147,684

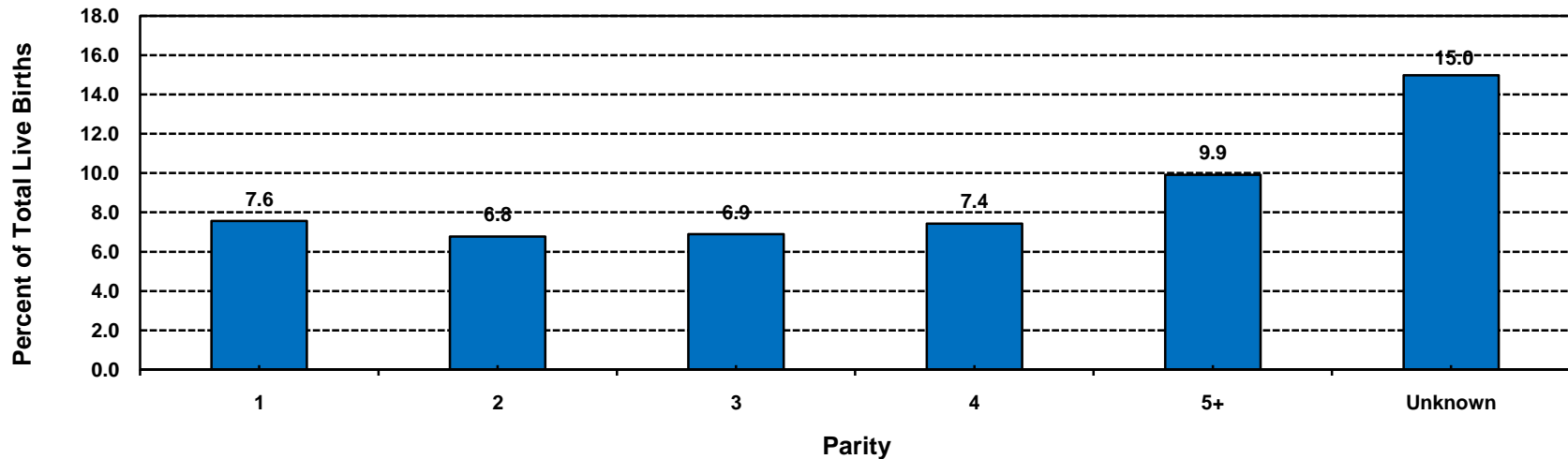


Year 2010 Objective: Reduce low birthweight births to an incidence of no more than 5 percent of live births.

Note: Low birthweight is defined as weight less than 2,500 grams at birth.

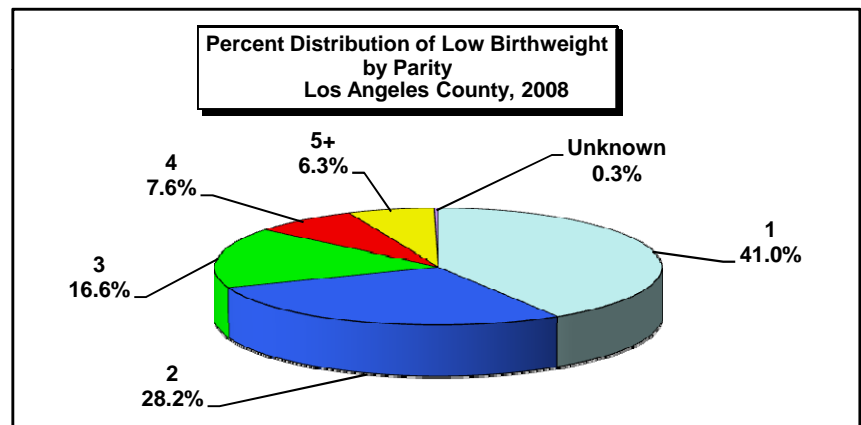
Source: California Department of Public Health, Center for Health Statistics, OHIR Vital Statistics Section, 2008.

**Low Birthweight Live Births, as Percent of Total Live Births
by Parity
Los Angeles County, 2008**



Los Angeles County, 2008				
Parity	Low Birthweight		95% Confidence Interval	
	Number	Percent	Lower	Upper
1	4,433	7.6	7.3	7.8
2	3,044	6.8	6.5	7.0
3	1,792	6.9	6.6	7.2
4	823	7.4	6.9	7.9
5+	677	9.9	9.2	10.6
Unknown	31	15.0	10.1	19.8
Total	10,800	7.3	7.2	7.4

Total Live Births
58,620
44,935
26,007
11,080
6,835
207
147,684



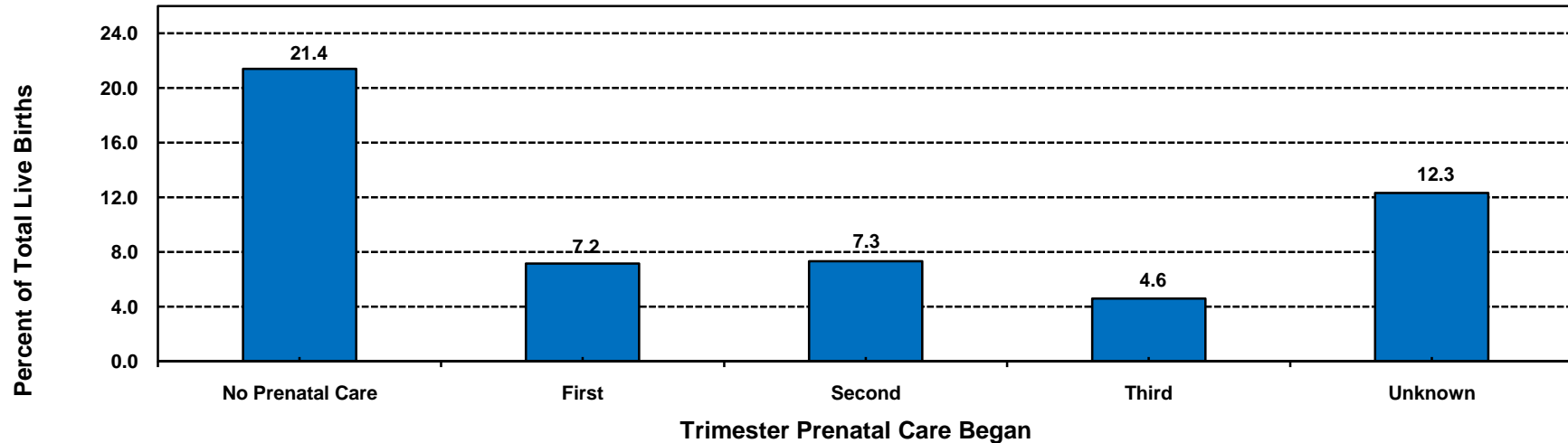
Year 2010 Objective: Reduce low birthweight births to an incidence of no more than 5 percent of live births.

Note: Low birthweight is defined as weight less than 2,500 grams at birth.

Parity = number of pregnancies resulting in live births to a woman.

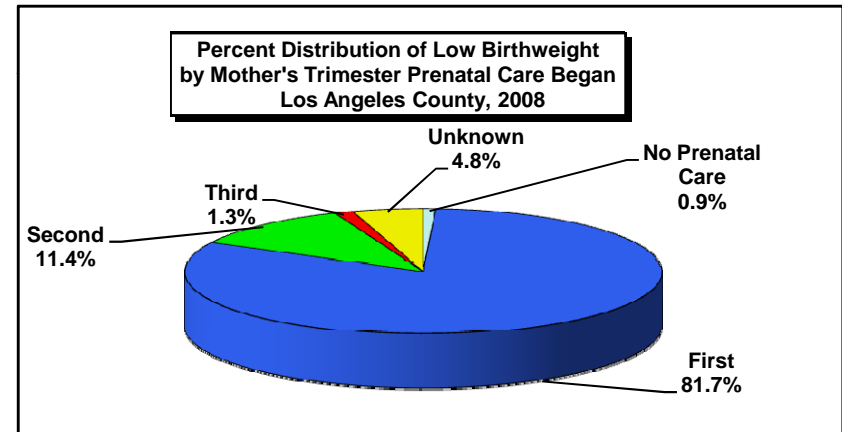
Source: California Department of Public Health, Center for Health Statistics, OHIR Vital Statistics Section, 2008.

**Low Birthweight Live Births, as Percent of Total Live Births
by Mother's Trimester Prenatal Care (PNC) Began
Los Angeles County, 2008**



Los Angeles County, 2008				
Mother's Trimester Prenatal Care Began	Low Birthweight		95% Confidence Interval	
	Number	Percent	Lower	Upper
No Prenatal Care	92	21.4	17.5	25.3
First	8,822	7.2	7.0	7.3
Second	1,231	7.3	6.9	7.7
Third	139	4.6	3.9	5.3
Unknown	516	12.3	11.3	13.3
Total	10,800	7.3	7.2	7.4

Total Live Births
430
123,251
16,791
3,024
4,188
147,684



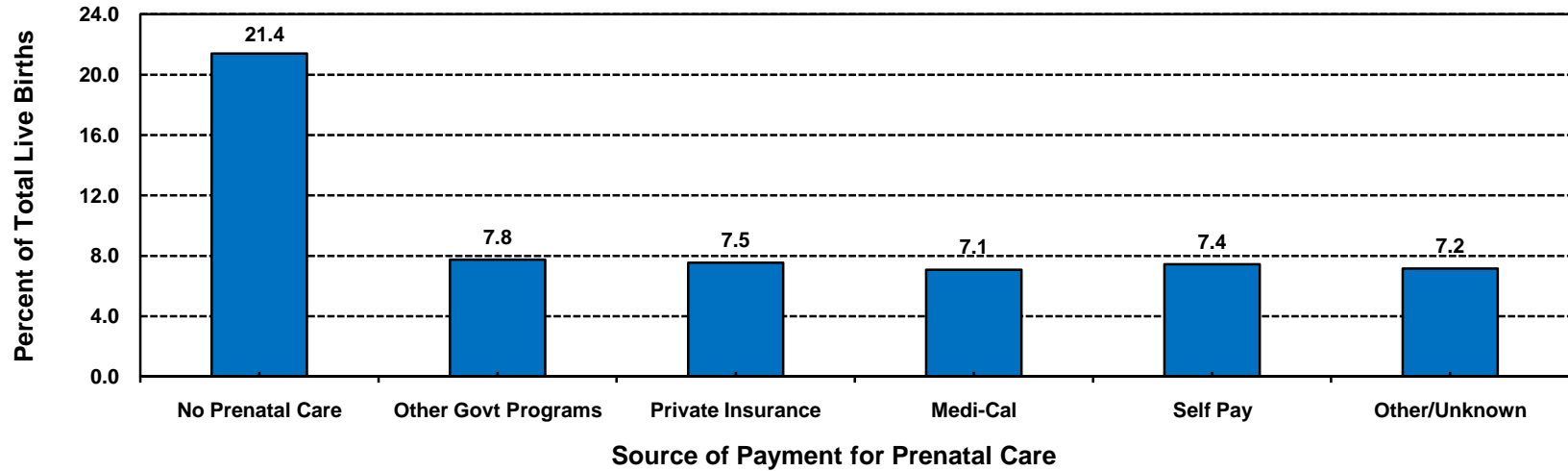
Year 2010 Objective: Reduce low birthweight births to an incidence of no more than 5 percent of live births.

Note: Low birthweight is defined as weight less than 2,500 grams at birth.

"Trimester Prenatal Care (PNC) Began" excludes the prenatal care experiences of all women whose pregnancies did not result in a live birth.

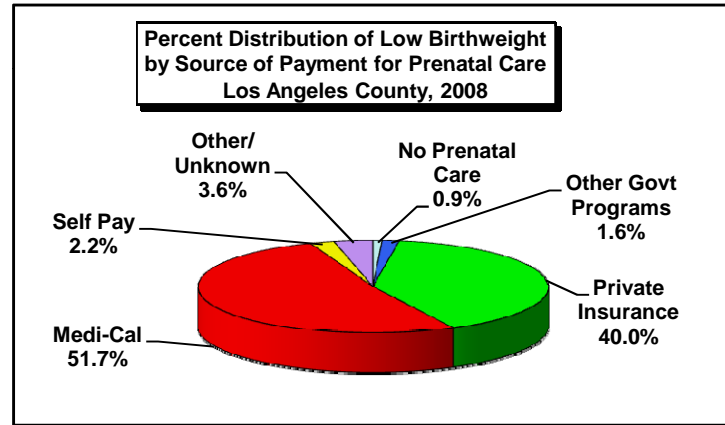
Source: California Department of Public Health, Center for Health Statistics, OHIR Vital Statistics Section, 2008.

**Low Birthweight Live Births, as Percent of Total Live Births
by Source of Payment for Prenatal Care (PNC)
Los Angeles County, 2008**



Los Angeles County, 2008				
Source of Payment for Prenatal Care	Low Birthweight		95% Confidence Interval	
	Number	Percent	Lower	Upper
No Prenatal Care	92	21.4	17.5	25.3
Other Govt Programs	169	7.8	6.6	8.9
Private Insurance	4,325	7.5	7.3	7.8
Medi-Cal	5,585	7.1	6.9	7.2
Self Pay	242	7.4	6.5	8.3
Other/Unknown	387	7.2	6.5	7.8
Total	10,800	7.3	7.2	7.4

Total Live Births
430
2,180
57,380
79,031
3,256
5,407
147,684



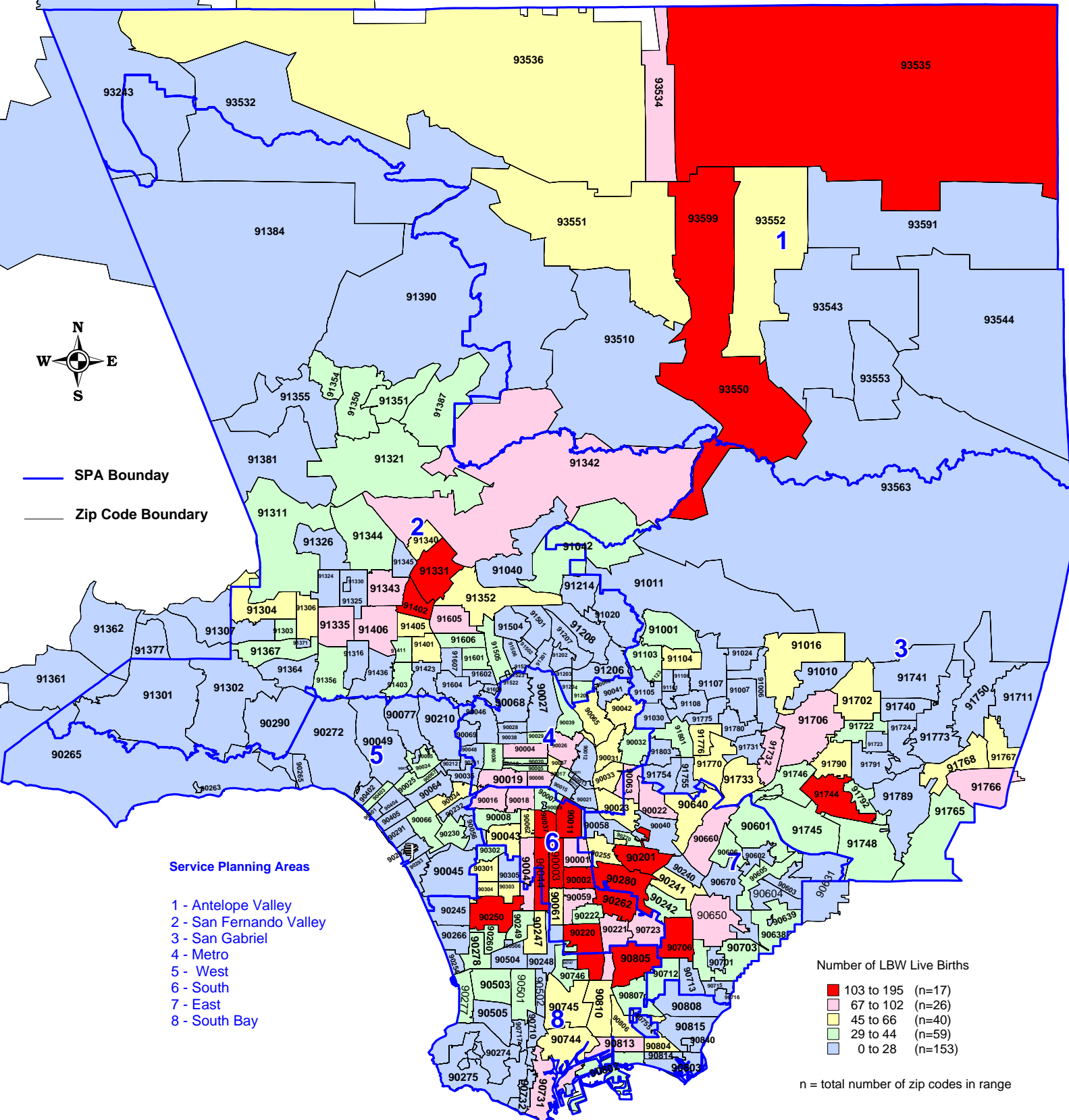
Year 2010 Objective: Reduce low birthweight births to an incidence of no more than 5 percent of live births.

Note: Low birthweight is defined as weight less than 2,500 grams at birth.

Source: California Department of Public Health, Center for Health Statistics, OHIR Vital Statistics Section, 2008.

Number of Low Birth Weight (LBW) Live Births by Zip Code* and Service Planning Area (SPA)

Los Angeles County, 2008



* Los Angeles County zip code boundaries as of April 2007

Total number of live births in Los Angeles County, 2008 = 147,684

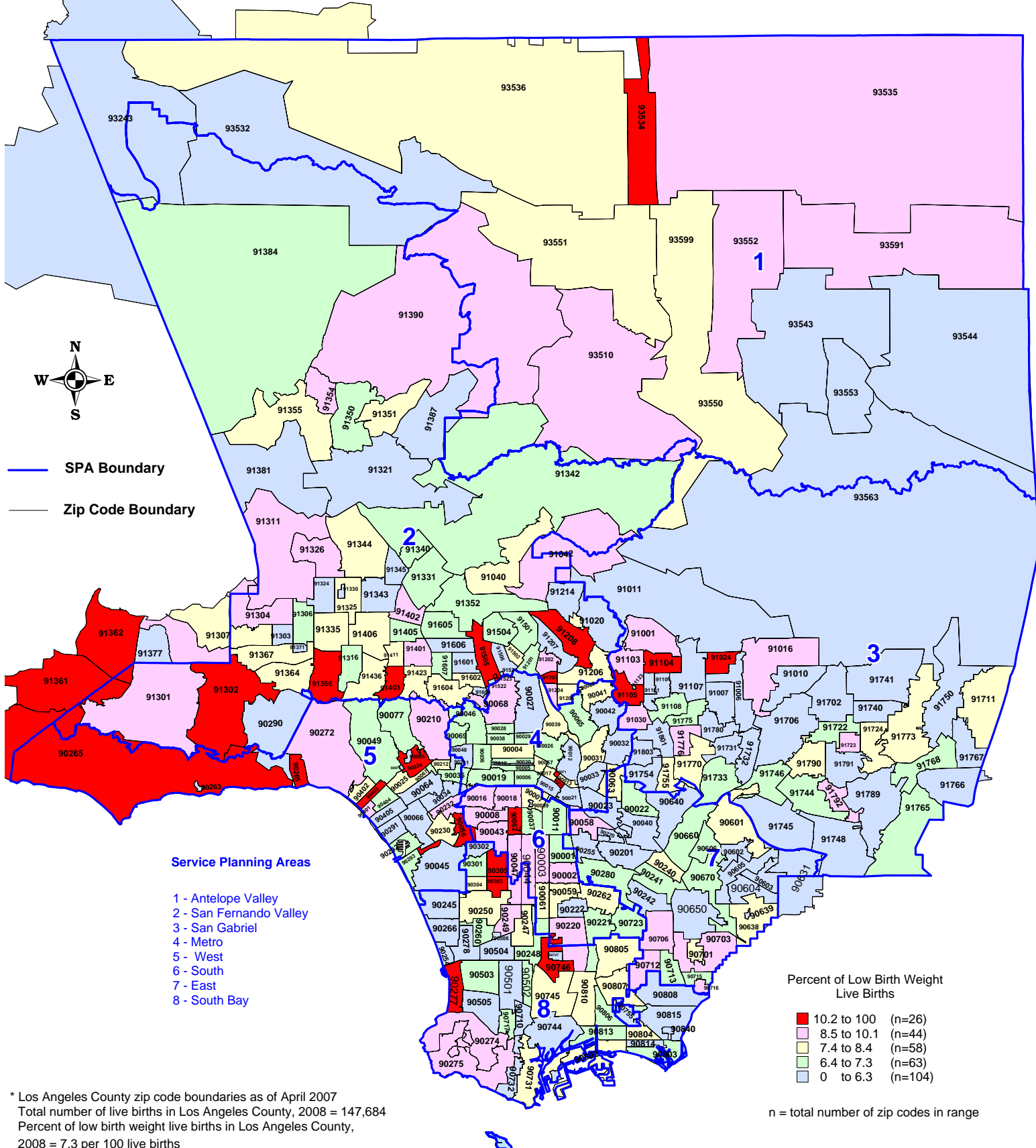
Total number of low birth weight live births in Los Angeles County, 2008 = 10,800

Note : Low birth weight is defined as weight less than 2,500 grams at birth

Source : California Department of Public Health, Center for Health Statistic, OHIR Vital Statistics Section, 2008

Percent of Low Birth Weight (LBW) Live Births by Zip Code* and Service Planning Area (SPA)

Los Angeles County, 2008



* Los Angeles County zip code boundaries as of April 2007
 Total number of live births in Los Angeles County, 2008 = 147,684
 Percent of low birth weight live births in Los Angeles County, 2008 = 7.3 per 100 live births

Note : Percent of low birth weight is defined as weight less than 2,500 grams at birth per 100 live births

HP 2010 Objective : Reduce low birth weight births to an incidence of no more than 5 percent of live births

Source : California Department of Public Health, Center for Health Statistics, OHIR Vital Statistics Section, 2008

Very Low Birthweight

TITLE V INDICATOR TEMPLATE

INDICATOR: Percent of Very Low Birthweight

DEFINITION: The percent of live births weighing less than 1,500 grams

NUMERATOR: The number of live births weighing less than 1,500 grams, by place of residence, in a calendar year

DENOMINATOR: The total number of live births, by place of residence, in a calendar year

HEALTHY PEOPLE 2010 OBJECTIVE:

Reduce very low birthweight births to an incidence of no more than 0.9 percent of live births.
(Baseline: 1.4 percent in 1998) (Objective 16-10b)

RISK FACTORS: Preterm birth, prior preterm birth; race/ethnicity (African American, Puerto Rican); substance use/abuse (e.g. illicit drug use)

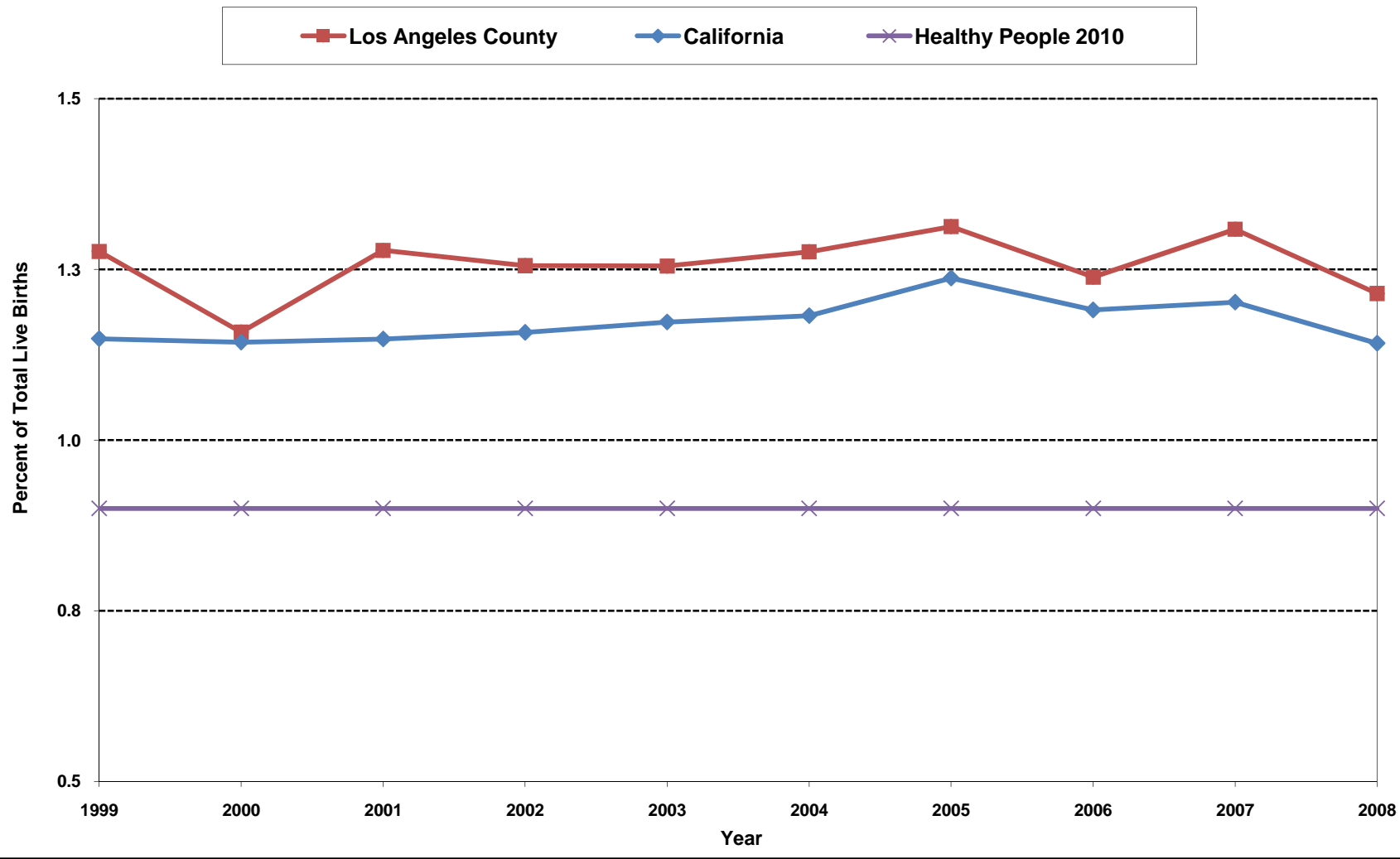
See also risk factors for low birthweight

Year	California				Los Angeles County			
	Very Low Birthweight		95% Confidence Interval		Very Low Birthweight		95% Confidence Interval	
	Number	Percent	Lower	Upper	Number	Percent	Lower	Upper
1999	5,950	1.1	1.1	1.2	1,993	1.3	1.2	1.3
2000	6,075	1.1	1.1	1.2	1,823	1.2	1.1	1.2
2001	6,054	1.1	1.1	1.2	1,962	1.3	1.2	1.3
2002	6,127	1.2	1.1	1.2	1,898	1.3	1.2	1.3
2003	6,344	1.2	1.1	1.2	1,910	1.3	1.2	1.3
2004	6,440	1.2	1.2	1.2	1,933	1.3	1.2	1.3
2005	6,790	1.2	1.2	1.3	1,974	1.3	1.3	1.4
2006	6,693	1.2	1.2	1.2	1,881	1.2	1.2	1.3
2007	6,805	1.2	1.2	1.2	1,987	1.3	1.3	1.4
2008	6,298	1.1	1.1	1.2	1,794	1.2	1.2	1.3

Denominator: Live Births		
Year	California	LA County
1999	518,073	156,153
2000	531,285	157,391
2001	527,371	153,523
2002	529,245	151,167
2003	540,827	152,192
2004	544,685	151,504
2005	548,700	150,377
2006	562,157	151,837
2007	566,137	151,813
2008	551,567	147,684

Source: California Department of Public Health, Center for Health Statistics, OHIR Vital Statistics Section, 1999-2008.

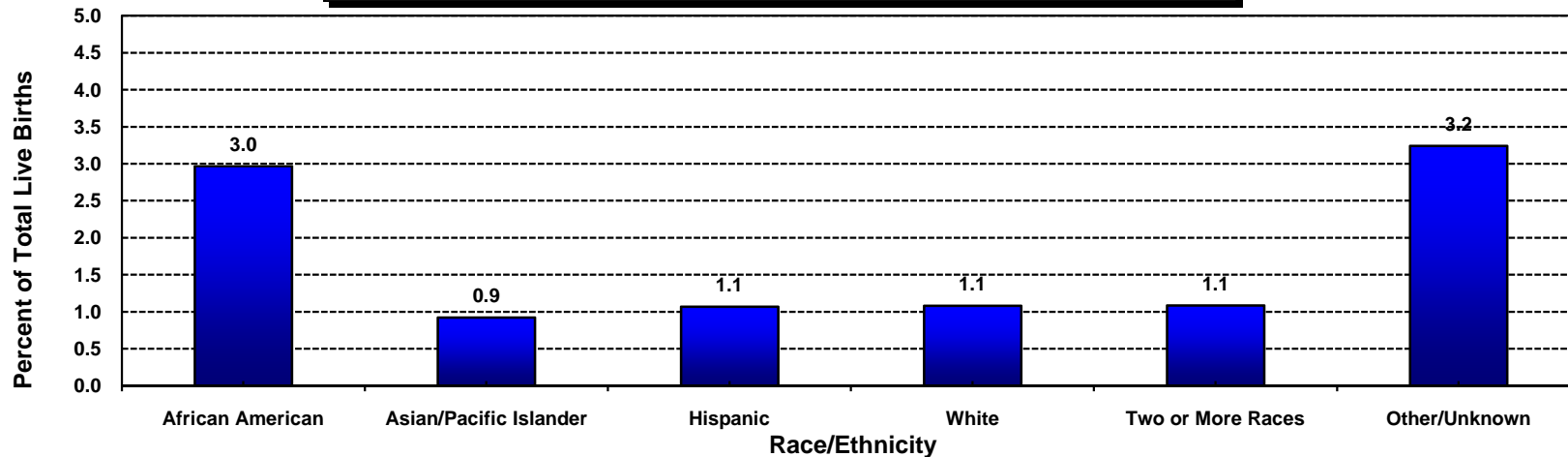
**Percent of Very Low Birthweight
California vs. Los Angeles County, 1999-2008**



Year 2010 Objective: Reduce very low birthweight births to an incidence of no more than 0.9 percent of live births.

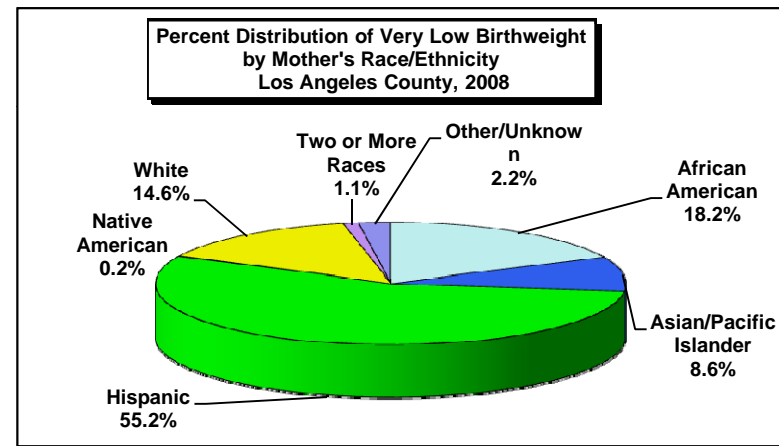
Source: California Department of Public Health, Center for Health Statistics, OHIR Vital Statistics Section, 1999-2008.

**Very Low Birthweight Live Births, as Percent of Total Live Births
by Mother's Race/Ethnicity
Los Angeles County, 2008**



Los Angeles County, 2008				
Mother's Race/Ethnicity	Very Low Birthweight		95% Confidence Interval	
	Number	Percent	Lower	Upper
African American	327	3.0	2.7	3.3
Asian/Pacific Islander	154	0.9	0.8	1.1
Hispanic	990	1.1	1.0	1.1
Native American	<5	N/C	N/C	N/C
White	262	1.1	1.0	1.2
Two or More Races	19	1.1	0.6	1.6
Other/Unknown	39	3.2	2.2	4.2
Total	1,794	1.2	1.2	1.3

Total Live Births
11,016
16,667
92,643
170
24,238
1,747
1,203
147,684



Year 2010 Objective: Reduce very low birthweight births to an incidence of no more than 0.9 percent of live births.

Note: Very low birthweight is defined as weight less than 1,500 grams at birth.

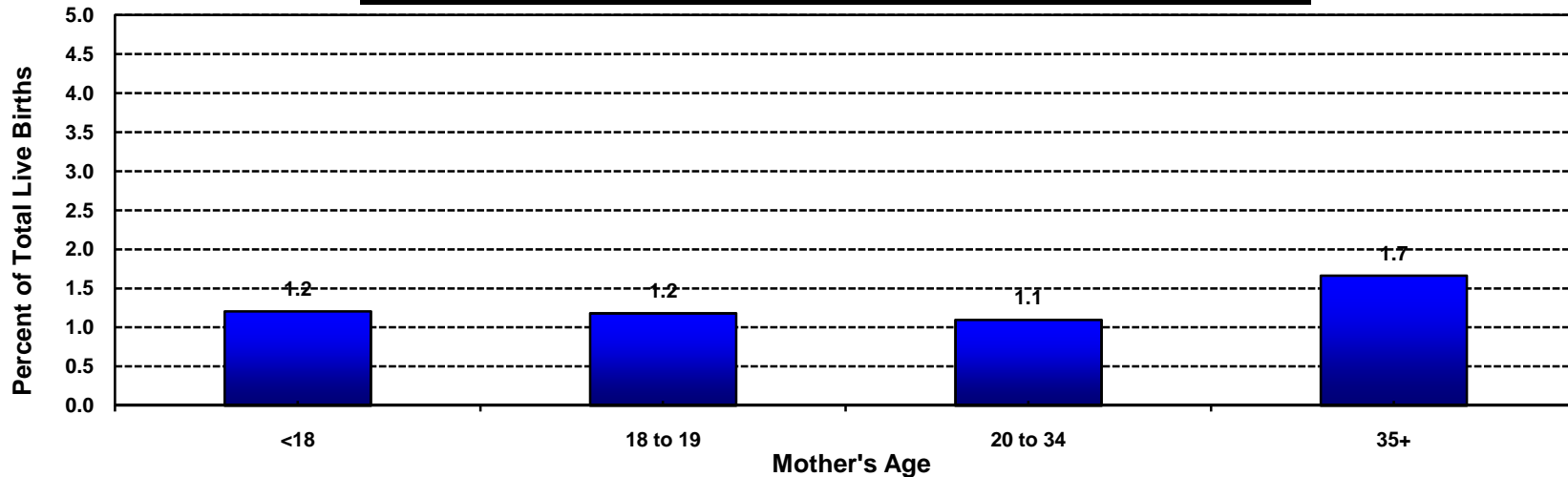
Racial/ethnic categorization has been revised in this report; data from previous year reports may not be comparable.

African American, Asian/Pacific Islander, Native American, White and other races exclude Hispanic ethnicity. Hispanic includes any race category.

Numbers fewer than 5 are shown as "<5". Rates are not calculated (N/C) if number is fewer than five.

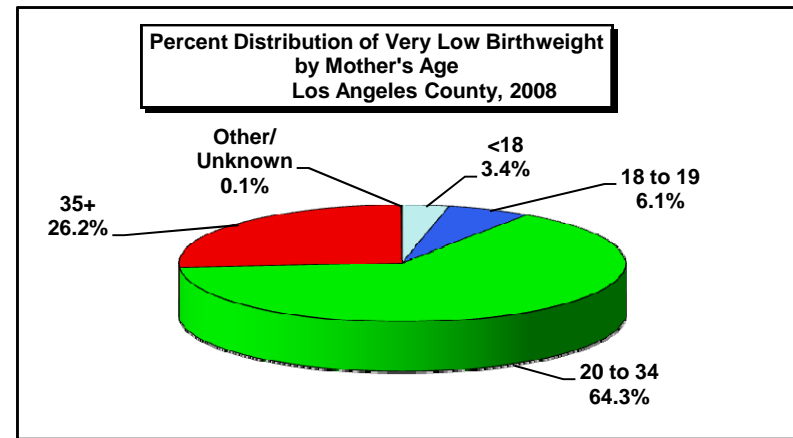
Source: California Department of Public Health, Center for Health Statistics, OHIR Vital Statistics Section, 2008.

**Very Low Birthweight Live Births, as Percent of Total Live Births
by Mother's Age
Los Angeles County, 2008**



Los Angeles County, 2008				
Mother's Age	Very Low Birthweight		95% Confidence Interval	
	Number	Percent	Lower	Upper
<18	61	1.2	0.9	1.5
18 to 19	109	1.2	1.0	1.4
20 to 34	1,153	1.1	1.0	1.2
35+	470	1.7	1.5	1.8
Other/Unknown	<5	N/C	N/C	N/C
Total	1,794	1.2	1.2	1.3

Total Live Births
5,055
9,223
105,139
28,252
15
147,684



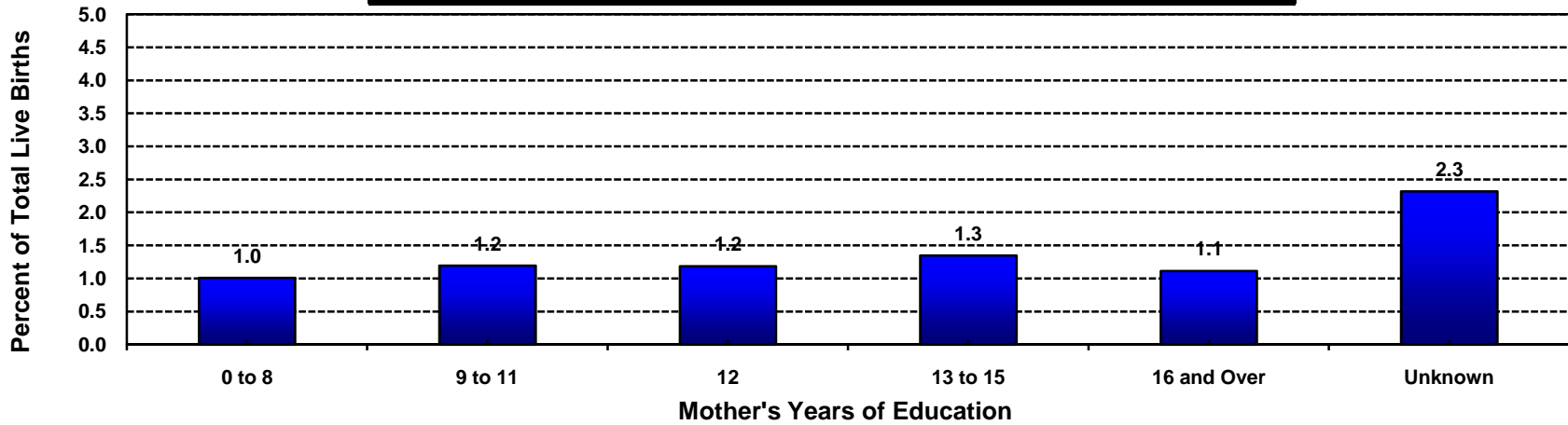
Year 2010 Objective: Reduce very low birthweight births to an incidence of no more than 0.9 percent of live births.

Note: Very low birthweight is defined as weight less than 1,500 grams at birth.

Numbers fewer than 5 are shown as "<5". Rates are not calculated (N/C) if number is fewer than five.

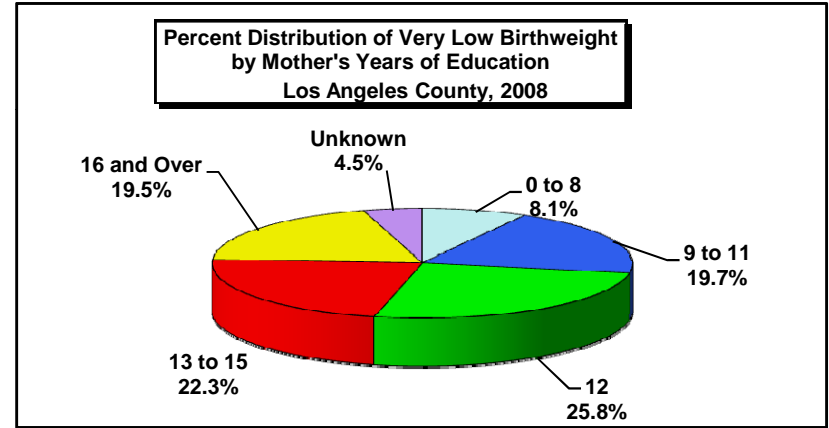
Source: California Department of Public Health, Center for Health Statistics, OHIR Vital Statistics Section, 2008.

**Very Low Birthweight Live Births, as Percent of Total Live Births
by Mother's Years of Education
Los Angeles County, 2008**



Los Angeles County, 2008				
Mother's Years of Education	Very Low Birthweight		95% Confidence Interval	
	Number	Percent	Lower	Upper
0 to 8	146	1.0	0.8	1.2
9 to 11	354	1.2	1.1	1.3
12	463	1.2	1.1	1.3
13 to 15	400	1.3	1.2	1.5
16 and Over	350	1.1	1.0	1.2
Unknown	81	2.3	1.8	2.8
Total	1,794	1.2	1.2	1.3

Total Live Births
14,443
29,639
39,056
29,669
31,386
3,491
147,684

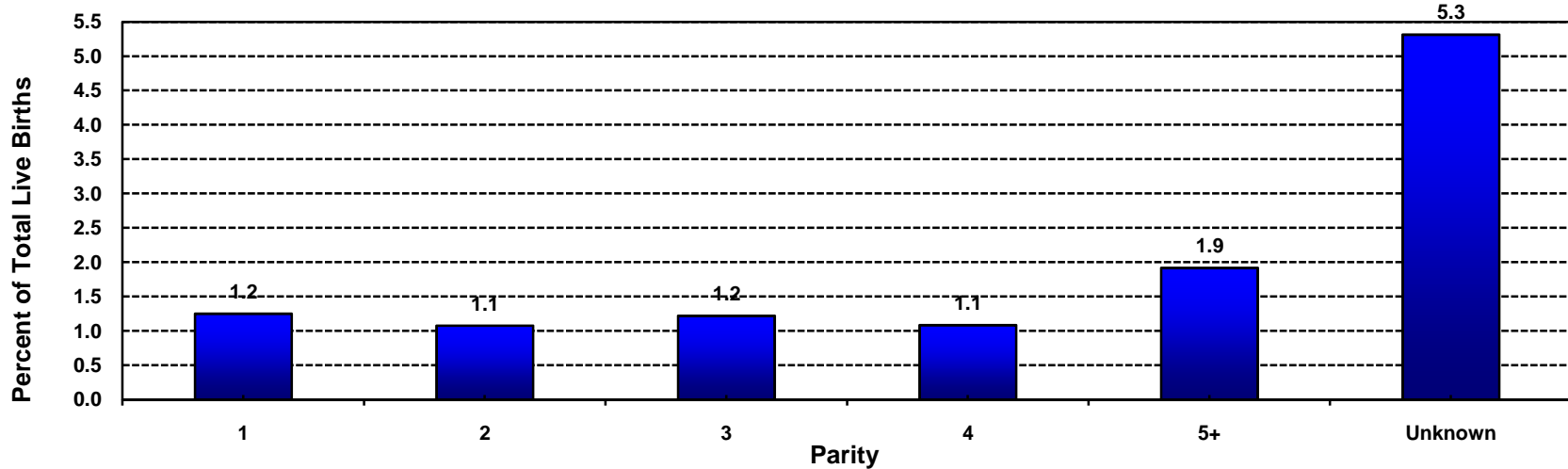


Year 2010 Objective: Reduce very low birthweight births to an incidence of no more than 0.9 percent of live births.

Note: Very low birthweight is defined as weight less than 1,500 grams at birth.

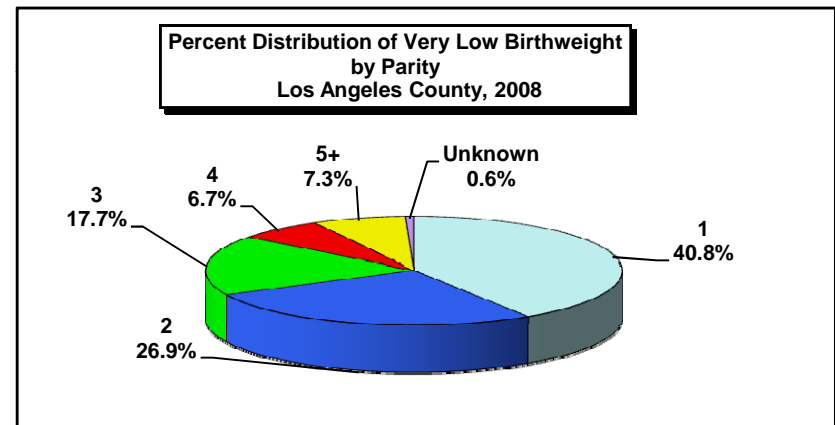
Source: California Department of Public Health, Center for Health Statistics, OHIR Vital Statistics Section, 2008.

**Very Low Birthweight Live Births, as Percent of Total Live Births
by Parity
Los Angeles County, 2008**



Los Angeles County, 2008				
Parity	Very Low Birthweight		95% Confidence Interval	
	Number	Percent	Lower	Upper
1	732	1.2	1.2	1.3
2	483	1.1	1.0	1.2
3	317	1.2	1.1	1.4
4	120	1.1	0.9	1.3
5+	131	1.9	1.6	2.2
Unknown	11	5.3	2.3	8.4
Total	1,794	1.2	1.2	1.3

Total Live Births
58,620
44,935
26,007
11,080
6,835
207
147,684



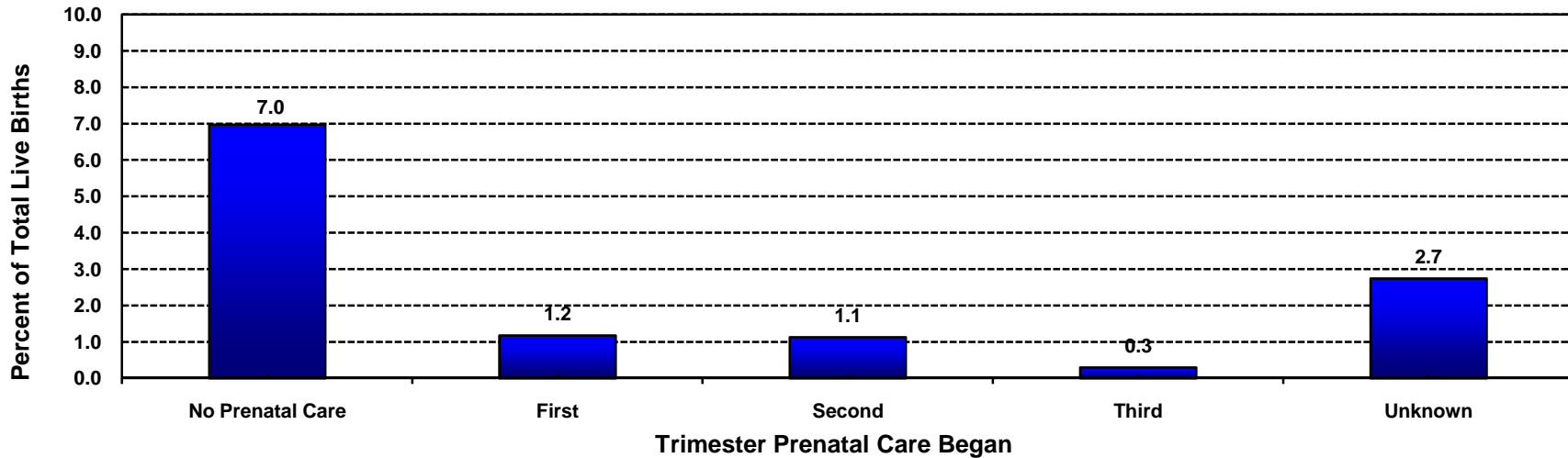
Year 2010 Objective: Reduce very low birthweight births to an incidence of no more than 0.9 percent of live births.

Note: Very low birthweight is defined as weight less than 1,500 grams at birth.

Parity = number of pregnancies resulting in live births to a woman.

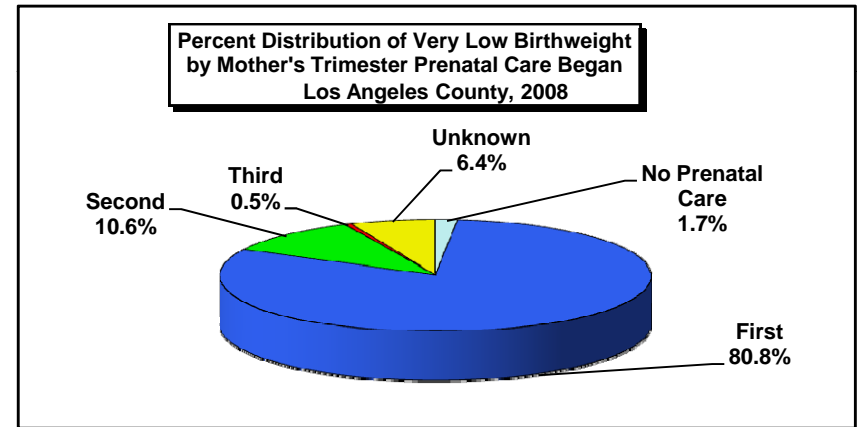
Source: California Department of Public Health, Center for Health Statistics, OHIR Vital Statistics Section, 2008.

**Very Low Birthweight Live Births, as Percent of Total Live Births
by Mother's Trimester Prenatal Care (PNC) Began
Los Angeles County, 2008**



Los Angeles County, 2008				
Mother's Trimester Prenatal Care Began	Very Low Birthweight		95% Confidence Interval	
	Number	Percent	Lower	Upper
No Prenatal Care	30	7.0	4.6	9.4
First	1,450	1.2	1.1	1.2
Second	190	1.1	1.0	1.3
Third	9	0.3	0.1	0.5
Unknown	115	2.7	2.3	3.2
Total	1,794	1.2	1.2	1.3

Total Live Births
430
123,251
16,791
3,024
4,188
147,684



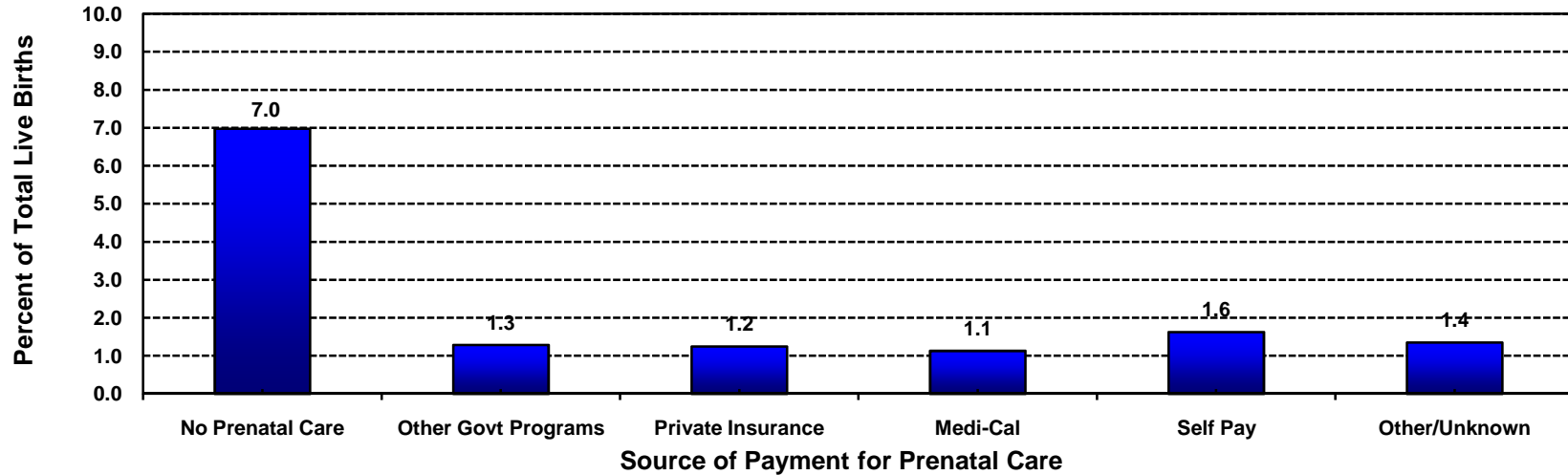
Year 2010 Objective: Reduce very low birthweight births to an incidence of no more than 0.9 percent of live births.

Note: Very low birthweight is defined as weight less than 1,500 grams at birth.

"Trimester Prenatal Care (PNC) Began" excludes the prenatal care experiences of all women whose pregnancies did not result in a live birth.

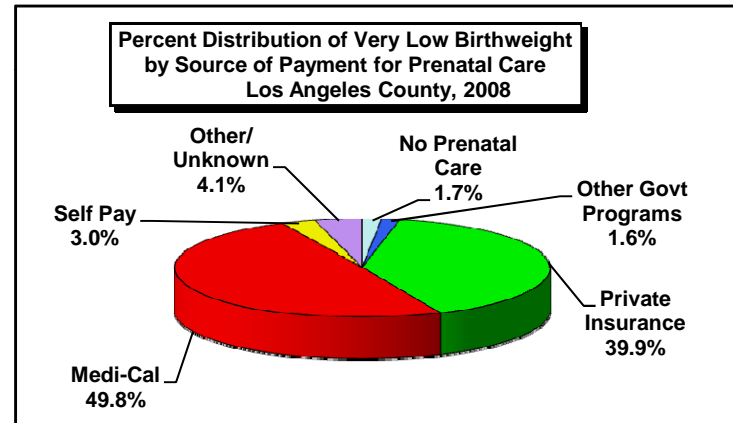
Source: California Department of Public Health, Center for Health Statistics, OHIR Vital Statistics Section, 2008.

**Very Low Birthweight Live Births, as Percent of Total Live Births
by Source of Payment for Prenatal Care (PNC)
Los Angeles County, 2008**



Los Angeles County, 2008				
Source of Payment for Prenatal Care	Very Low Birthweight		95% Confidence Interval	
	Number	Percent	Lower	Upper
No Prenatal Care	30	7.0	4.6	9.4
Other Govt Programs	28	1.3	0.8	1.8
Private Insurance	716	1.2	1.2	1.3
Medi-Cal	894	1.1	1.1	1.2
Self Pay	53	1.6	1.2	2.1
Other/Unknown	73	1.4	1.0	1.7
Total	1,794	1.2	1.2	1.3

Total Live Births
430
2,180
57,380
79,031
3,256
5,407
147,684



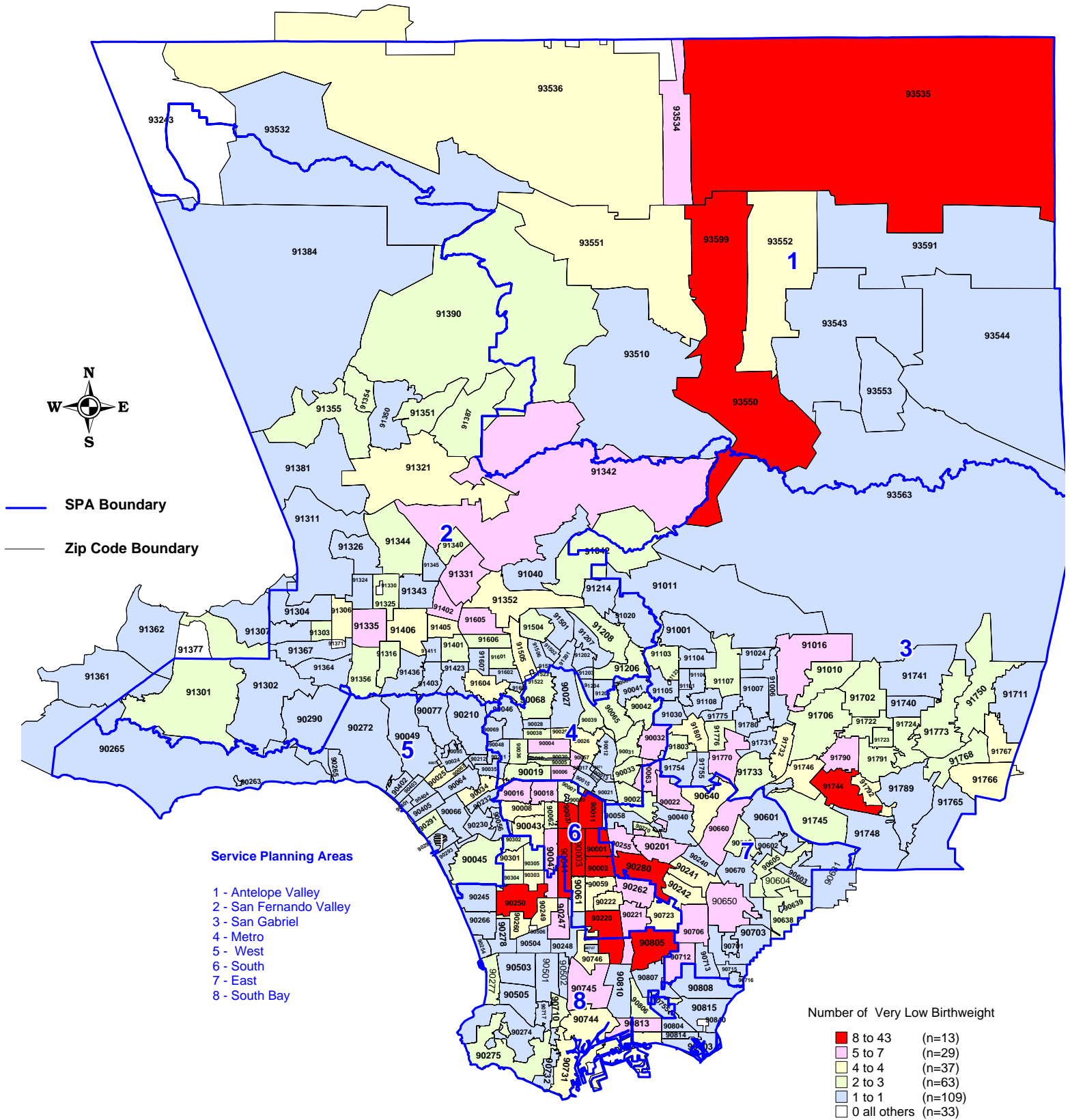
Year 2010 Objective: Reduce very low birthweight births to an incidence of no more than 0.9 percent of live births.

Note: Very low birthweight is defined as weight less than 1,500 grams at birth.

Source: California Department of Public Health, Center for Health Statistics, OHIR Vital Statistics Section, 2008.

Number of Very Low Birthweight (VLBW) Live Births by Zip Code* and Service Planning Area (SPA)

Los Angeles County, 2008



* Los Angeles County zip code boundaries as of April 2007

Total number of live births in Los Angeles County, 2008 = 147,684

Total number of very low birthweight live births in Los Angeles County, 2008 = 1,794

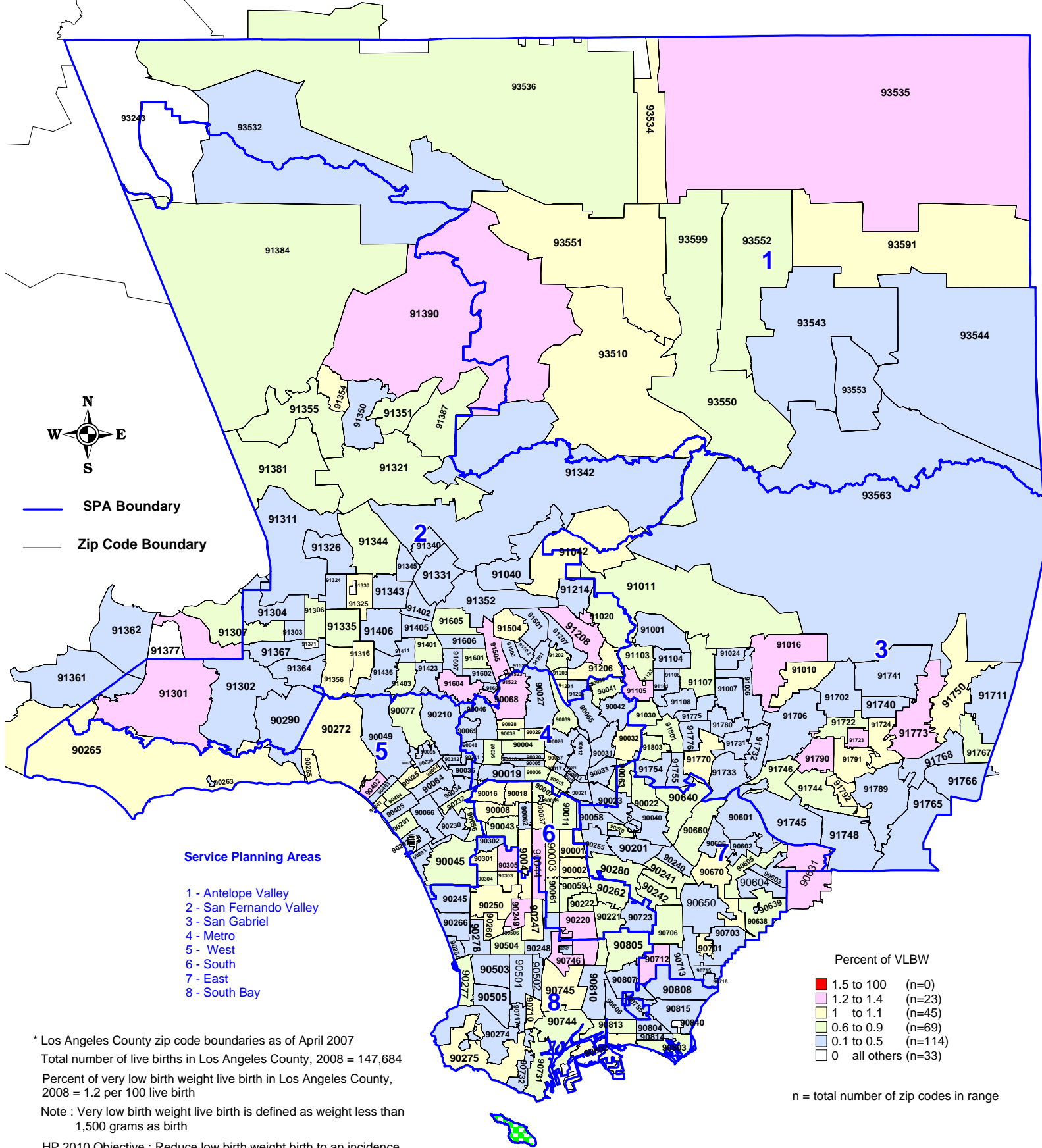
Note : Very low birth weight live birth is defined as weight less than 1,500 grams at birth Page 50

Source: California Department of Public Health, Center for Health statistics, OHIR Vital Statistics Section, 2008

n = total number of zip codes in range

Percent of Very Low Birthweight (VLBW) Live Births by Zip Code* and Service Planning Area (SPA)

Los Angeles County, 2008



* Los Angeles County zip code boundaries as of April 2007
 Total number of live births in Los Angeles County, 2008 = 147,684
 Percent of very low birth weight live birth in Los Angeles County, 2008 = 1.2 per 100 live birth

Note : Very low birth weight live birth is defined as weight less than 1,500 grams as birth

HP 2010 Objective : Reduce low birth weight birth to an incidence of no more than 0.9 percent of live birth

Source: California Department of Public Health, Center for Health Statistics, OHIR Vital Statistics Section, 2008