

Infant Mortality

TITLE V INDICATOR TEMPLATE

INDICATOR: Infant Mortality Rate

DEFINITION: The number of infant deaths occurring at less than 365 days of age per 1,000 live births

NUMERATOR: The number of infant deaths occurring at less than 365 days of age, by place of residence, in a calendar year

DENOMINATOR: The total number of live births, by place of residence, in a calendar year

HEALTHY PEOPLE 2010 OBJECTIVE:

Reduce the infant mortality rate to no more than 4.5 per 1,000 live births.
(Baseline: 7.2 per 1,000 live births in 1998) (Objective 16-1c)

RISK FACTORS:

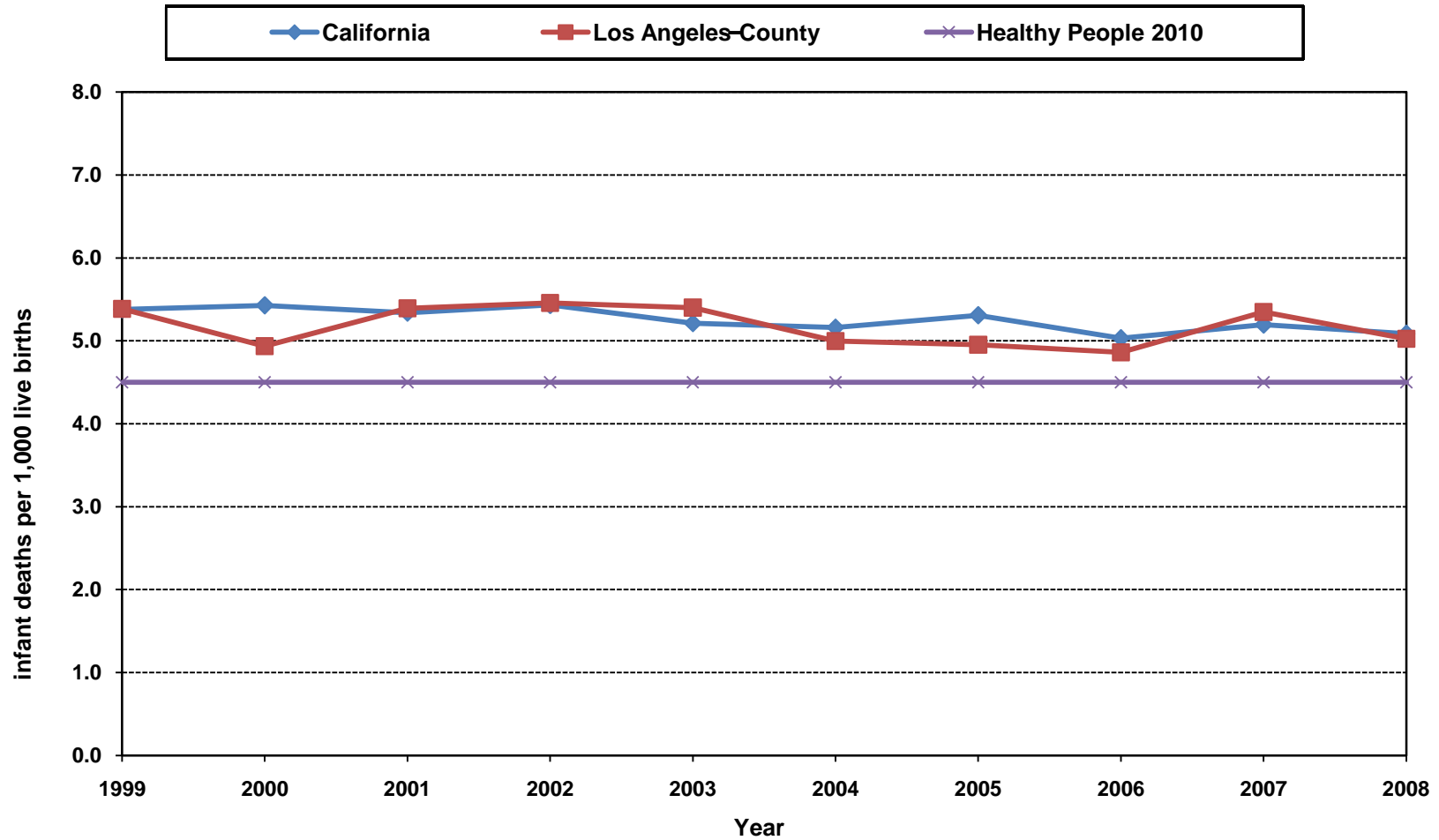
Race/ethnicity; prematurity/disorders related to short gestation; low birth weight; congenital anomalies; young maternal age; lowmaternal education level; maternal tobacco use; maternal alcohol or substance use/abuse; poor maternal nutrition; inadequate prenatal care; unintended pregnancy; maternal psychosocial problems; maternal medical complications/chronic illness during pregnancy (including diabetes); pregnancy complications; short interpregnancy interval; injury (including domestic violence); infection; respiratory distress syndrome; family history of SIDS

Year	California				Los Angeles County			
	Infant Mortality		95% Confidence Interval		Infant Mortality		95% Confidence Interval	
	Deaths	Rate	Lower	Upper	Deaths	Rate	Lower	Upper
1999	2,787	5.4	5.2	5.6	841	5.4	5.0	5.7
2000	2,884	5.4	5.2	5.6	777	4.9	4.6	5.3
2001	2,815	5.3	5.1	5.5	828	5.4	5.0	5.8
2002	2,875	5.4	5.2	5.6	825	5.5	5.1	5.8
2003	2,819	5.2	5.0	5.4	822	5.4	5.0	5.8
2004	2,811	5.2	5.0	5.4	757	5.0	4.6	5.4
2005	2,913	5.3	5.1	5.5	745	5.0	4.6	5.3
2006	2,829	5.0	4.8	5.2	738	4.9	4.5	5.2
2007	2,941	5.2	5.0	5.4	812	5.3	5.0	5.7
2008	2,806	5.1	4.9	5.3	742	5.0	4.7	5.4

Denominator: Live Births		
Year	California	LA County
1999	518,073	156,153
2000	531,285	157,391
2001	527,371	153,523
2002	529,245	151,167
2003	540,827	152,192
2004	544,685	151,504
2005	548,700	150,377
2006	562,157	151,837
2007	566,137	151,813
2008	551,567	147,684

Source: California Department of Public Health, Center for Health Statistics, OHIR Vital Statistics Section, 1999-2008

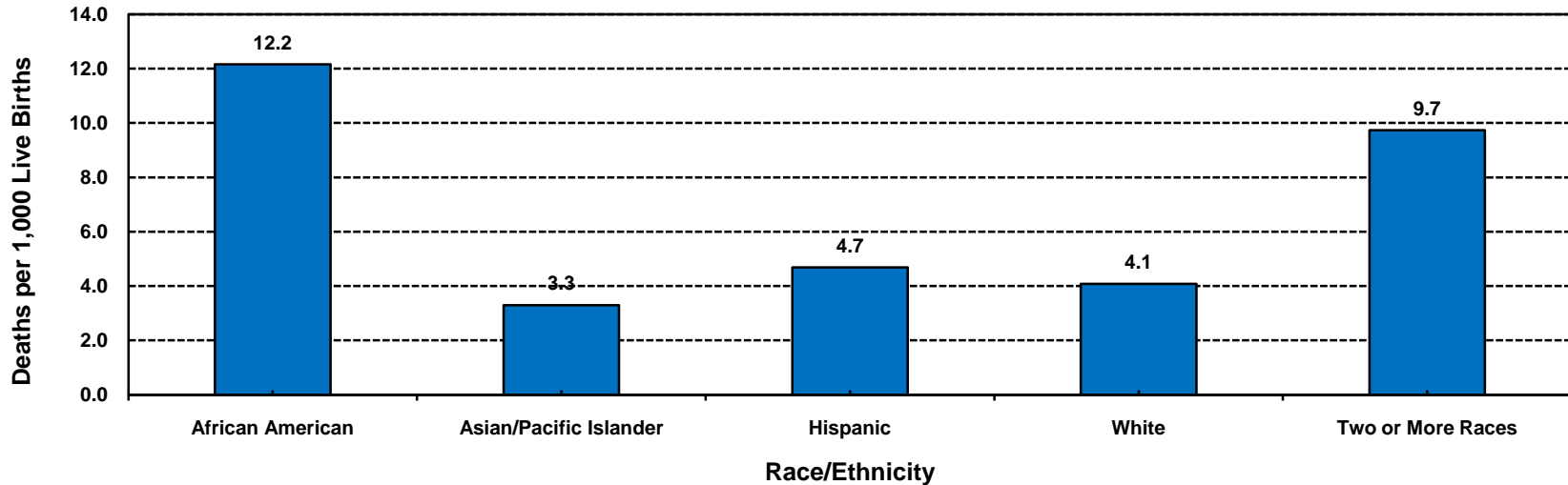
Infant Deaths per 1,000 Live births California vs. Los Angeles County, 1999-2008



Year 2010 Objective: Reduce the infant mortality rate to no more than 4.5 per 1,000 live births.

Source: California Department of Public Health, Center for Health Statistics, OHIR Vital Statistics Section, 1999-2008

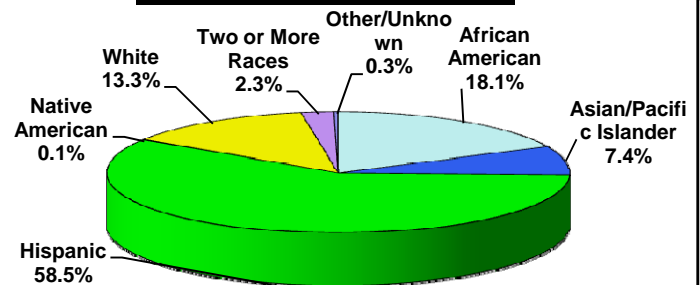
**Infant Mortality Rate by Race/Ethnicity
Los Angeles County, 2008**



Los Angeles County, 2008				
Race/Ethnicity	Infant Mortality		95% Confidence Interval	
	Deaths	Rate	Lower	Upper
African American	134	12.2	10.1	14.2
Asian/Pacific Islander	55	3.3	2.4	4.2
Hispanic	434	4.7	4.2	5.1
Native American	<5	N/C	N/C	N/C
White	99	4.1	3.3	4.9
Two or More Races	17	9.7	5.1	14.3
Other/Unknown	<5	N/C	N/C	N/C
Total	742	5.0	4.7	5.4

Total Live Births
11,016
16,667
92,643
170
24,238
1,747
1,203
147,684

**Percent Distribution of Infant Deaths by Race/Ethnicity
Los Angeles County, 2008**



Year 2010 Objective: Reduce the infant mortality rate to no more than 4.5 per 1,000 live births.

Note: Infant mortality rate is defined as infant deaths occurring less than 365 days per 1,000 live births.

Racial/ethnic categorization has been revised in this report; data from previous year reports may not be comparable.

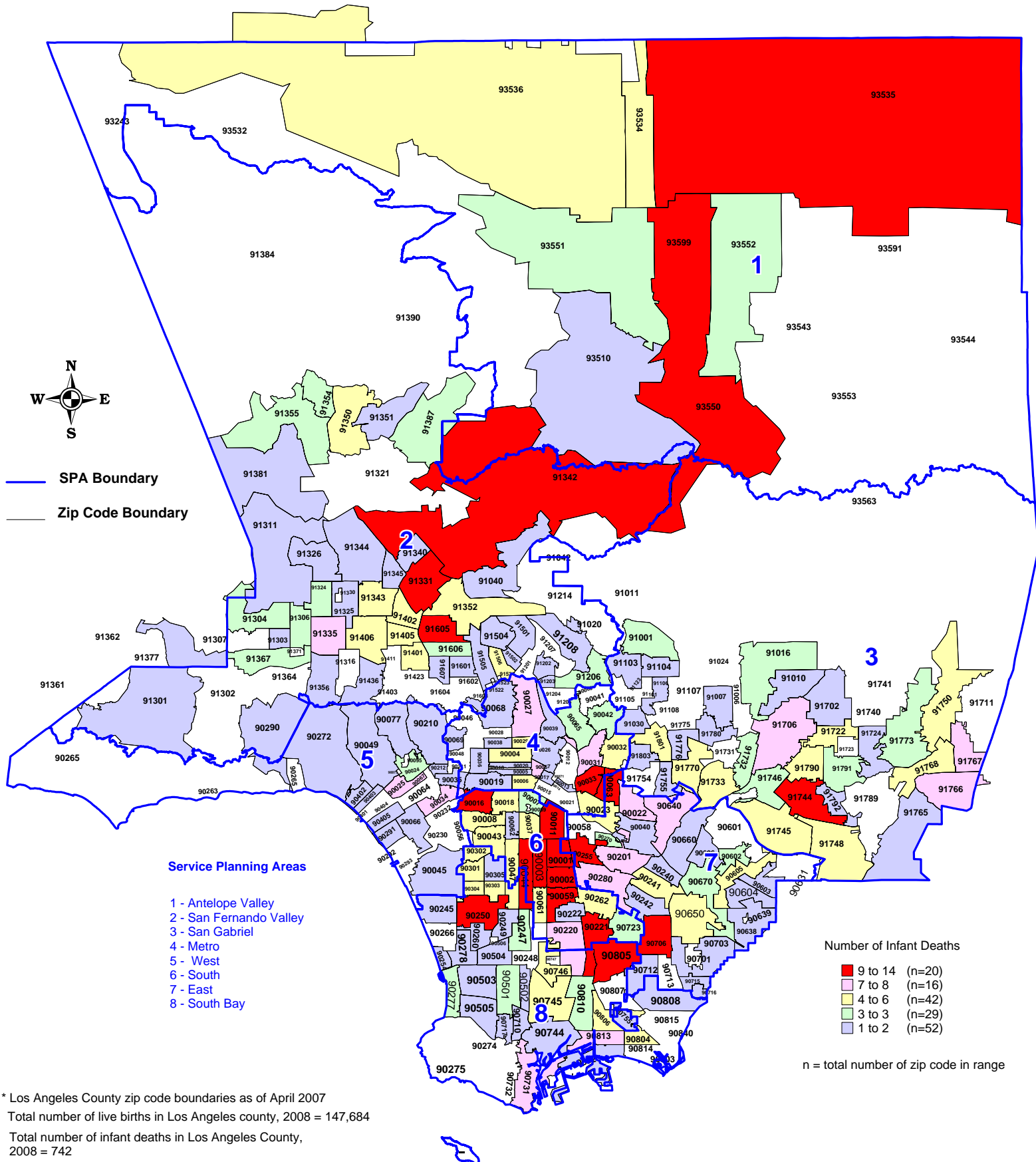
African American, Asian/Pacific Islander, Native American, White and other races exclude Hispanic ethnicity. Hispanic includes any race category.

Numbers fewer than 5 are shown as "<5". Rates are not calculated (N/C) if number is fewer than five.

Source: California Department of Public Health, Center for Health Statistics, OHIR Vital Statistics Section, 2008

Number of Infant Deaths by Zip Code* and Service Planning Area (SPA)

Los Angeles County, 2008



* Los Angeles County zip code boundaries as of April 2007

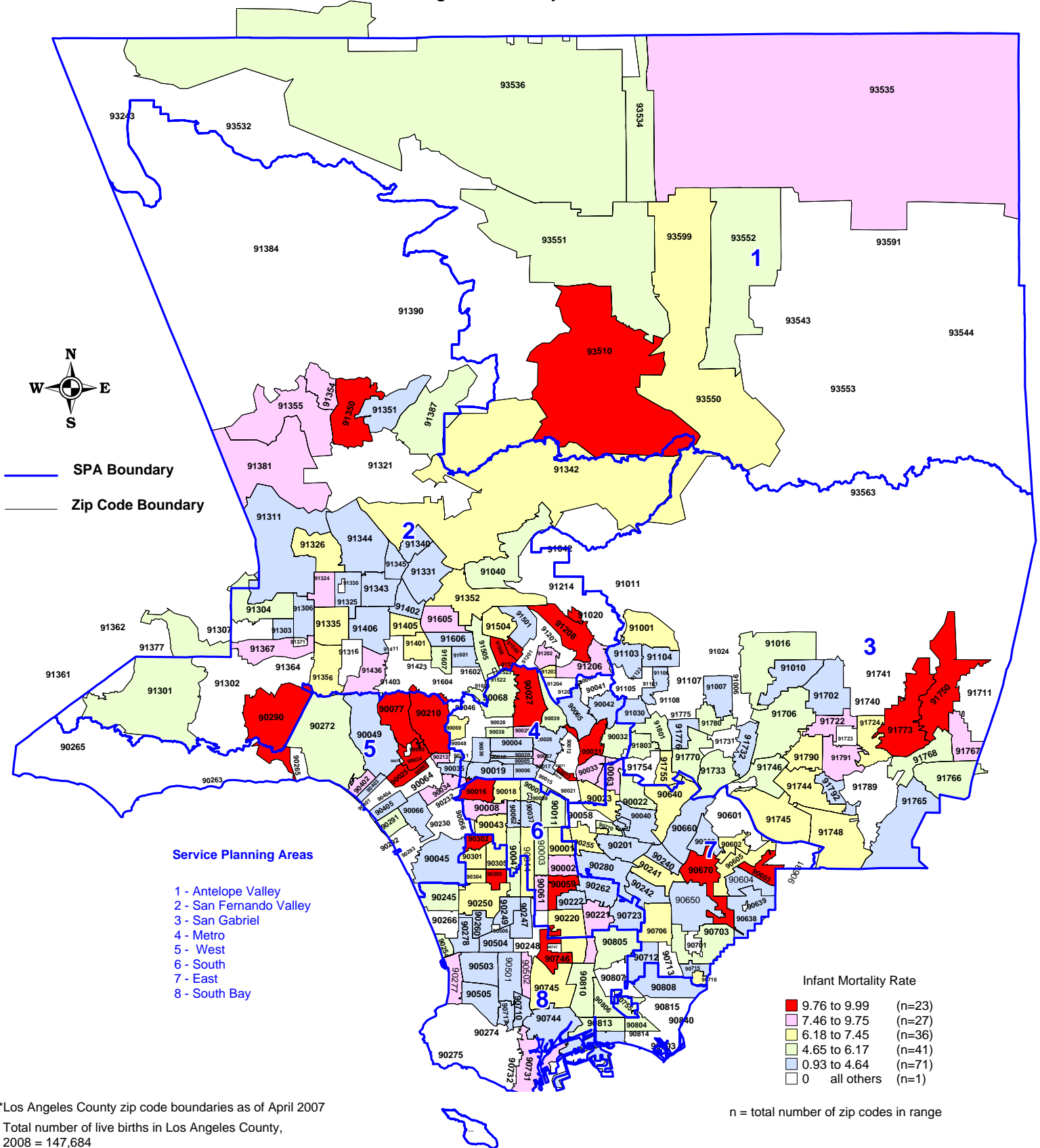
Total number of live births in Los Angeles county, 2008 = 147,684

Total number of infant deaths in Los Angeles County, 2008 = 742

Note : Infant death is defined as death occurring less than 365 days of age.

Infant Mortality Rate by Zip Code* and Service Planning Area (SPA)

Los Angeles County, 2008



*Los Angeles County zip code boundaries as of April 2007

Total number of live births in Los Angeles County, 2008 = 147,684

Infant Mortality Rate in Los Angeles County, 2008 = 5.0 per 1,000 live birth

Note: Infant mortality rate is defined as infant deaths occurring less than 365 days per 1,000 live births

HP 2010 Objective : Reduce the infant mortality rate to no more than 4.5 per 1,000 live births

Source: California Department of Public Health, Center for Health Statistics, OHIR Vital Statistics Section, 2008

n = total number of zip codes in range

TITLE V INDICATOR TEMPLATE

INDICATOR: Neonatal Mortality Rate

DEFINITION: The number of infant deaths occurring at less than 28 days of age per 1,000 live births

NUMERATOR: The number of infant deaths occurring at less than 28 days of age, by place of residence, in a calendar year

DENOMINATOR: The total number of live births, by place of residence, in a calendar year

HEALTHY PEOPLE 2010 OBJECTIVE:
 Reduce the neonatal mortality rate to no more than 2.9 per 1,000 live births.
 (Baseline: 4.8 per 1,000 live births in 1998) (Objective 16-1d)

RISK FACTORS: Congenital anomalies; respiratory distress syndrome; short gestation; low birth weight; maternal complications; race/ethnicity (African American, Puerto Rican)

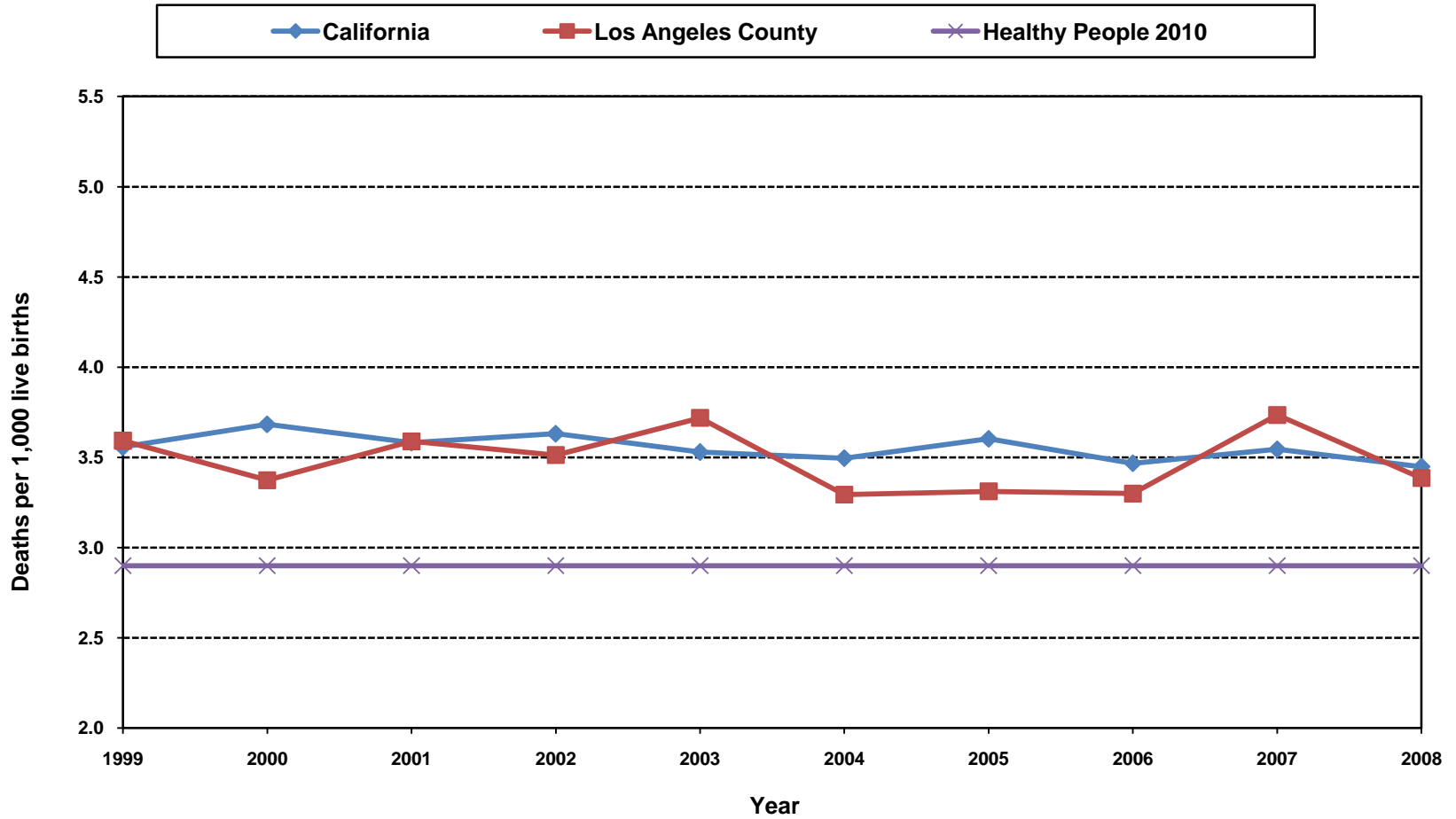
See also risk factors for infant mortality.

Year	California				Los Angeles County			
	Neonatal Mortality		95% Confidence Interval		Neonatal Mortality		95% Confidence Interval	
	Deaths	Rate	Lower	Upper	Deaths	Rate	Lower	Upper
1999	1,843	3.6	3.4	3.7	561	3.6	3.3	3.9
2000	1,957	3.7	3.5	3.8	531	3.4	3.1	3.7
2001	1,889	3.6	3.4	3.7	551	3.6	3.3	3.9
2002	1,922	3.6	3.5	3.8	531	3.5	3.2	3.8
2003	1,909	3.5	3.4	3.7	566	3.7	3.4	4.0
2004	1,904	3.5	3.3	3.7	499	3.3	3.0	3.6
2005	1,977	3.6	3.4	3.8	498	3.3	3.0	3.6
2006	1,949	3.5	3.3	3.6	501	3.3	3.0	3.6
2007	2,007	3.5	3.4	3.7	567	3.7	3.4	4.0
2008	1,902	3.4	3.3	3.6	500	3.4	3.1	3.7

Year	Denominator: Live Births	
	California	LA County
1999	518,073	156,153
2000	531,285	157,391
2001	527,371	153,523
2002	529,245	151,167
2003	540,827	152,192
2004	544,685	151,504
2005	548,700	150,377
2006	562,157	151,837
2007	566,137	151,813
2008	551,567	147,684

Source: California Department of Public Health, Center for Health Statistics, OHIR Vital Statistics Section, 1999-2008

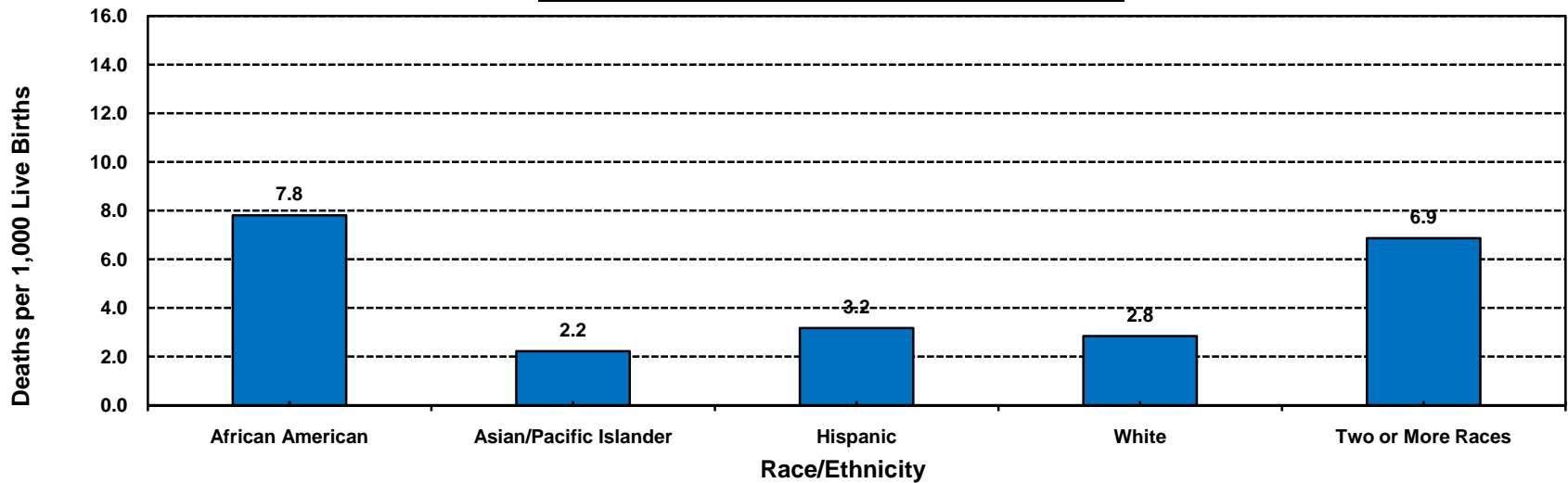
Neonatal Deaths per 1,000 Live Births California vs. Los Angeles County, 1999-2008



Year 2010 Objective: Reduce the neonatal mortality rate to no more than 2.9 per 1,000 live births.

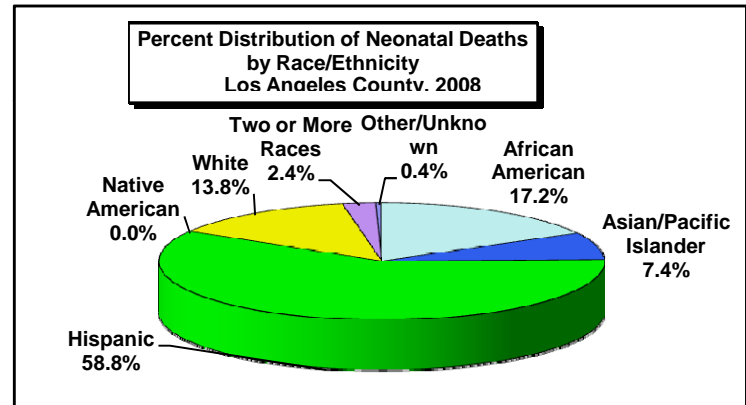
Source: California Department of Public Health, Center for Health Statistics, OHIR Vital Statistics Section, 1999-2008

Neonatal Mortality Rate by Race/Ethnicity Los Angeles County, 2008



Los Angeles County, 2008				
Race/Ethnicity	Neonatal Mortality		95% Confidence Interval	
	Deaths	Rate	Lower	Upper
African American	86	7.8	6.2	9.5
Asian/Pacific Islander	37	2.2	1.5	2.9
Hispanic	294	3.2	2.8	3.5
Native American	<5	N/C	N/C	N/C
White	69	2.8	2.2	3.5
Two or More Races	12	6.9	3.0	10.7
Other/Unknown	<5	N/C	N/C	N/C
Total	500	3.4	3.1	3.7

Total Live Births
11,016
16,667
92,643
170
24,238
1,747
1,203
147,684



Year 2010 Objective: Reduce the neonatal mortality rate to no more than 2.9 per 1,000 live births.

Note: Neonatal mortality rate is defined as infant deaths occurring less than 28 days per 1,000 live births.

Racial/ethnic categorization has been revised in this report; data from previous year reports may not be comparable.

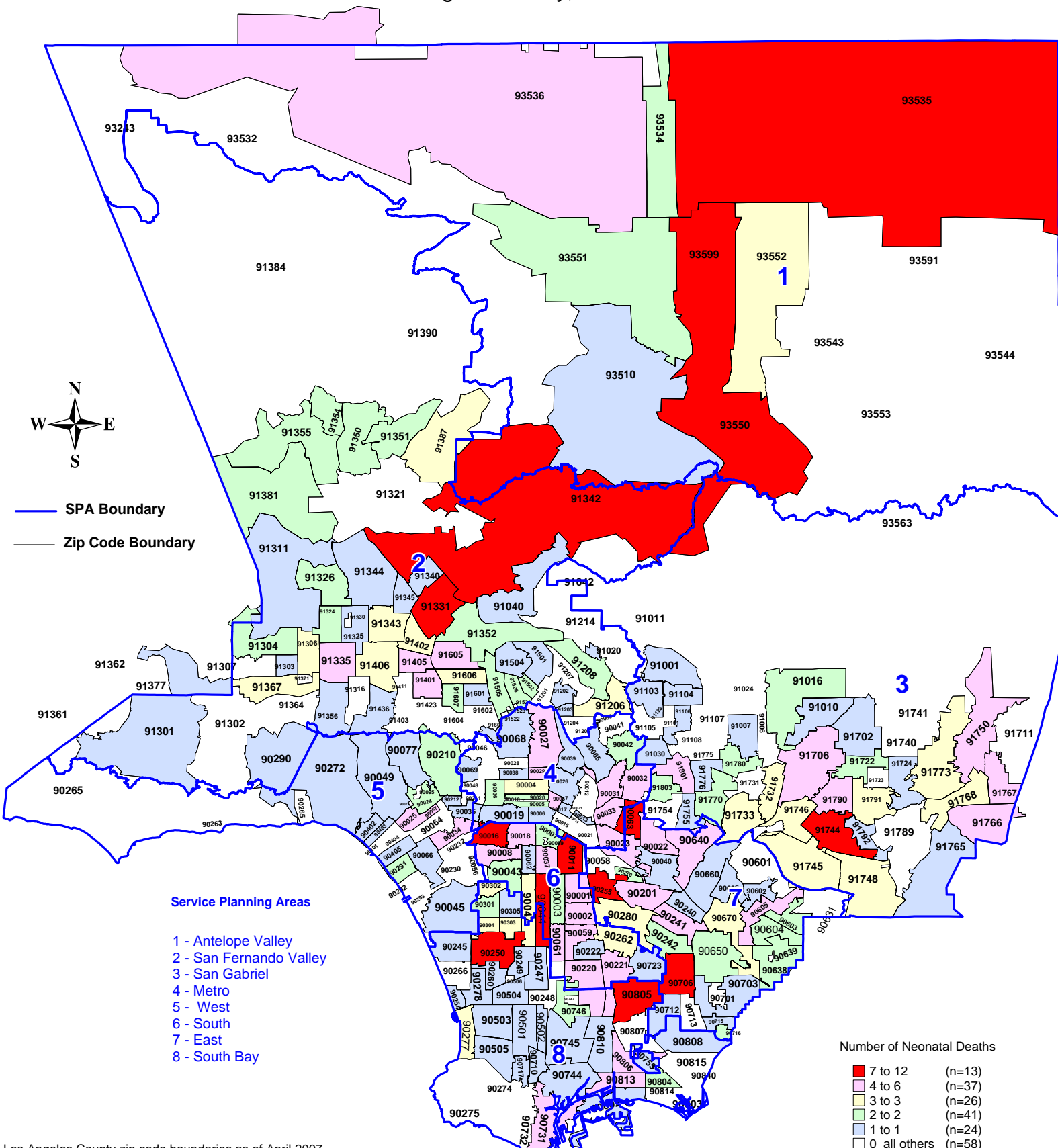
African American, Asian/Pacific Islander, Native American, White and other races exclude Hispanic ethnicity. Hispanic includes any race category.

Numbers fewer than 5 are shown as "<5". Rates are not calculated (N/C) if number is fewer than five.

Source: California Department of Public Health, Center for Health Statistics, OHIR Vital Statistics Section, 2008

Number of Neonatal Deaths by Zip Code* and Service Planning Area (SPA)

Los Angeles County, 2008



7 to 12	(n=13)
4 to 6	(n=37)
3 to 3	(n=26)
2 to 2	(n=41)
1 to 1	(n=24)
0 all others	(n=58)

n = Total number of zip code in range

* Los Angeles County zip code boundaries as of April 2007

Total number of live births in Los Angeles County, 2008 = 147,684

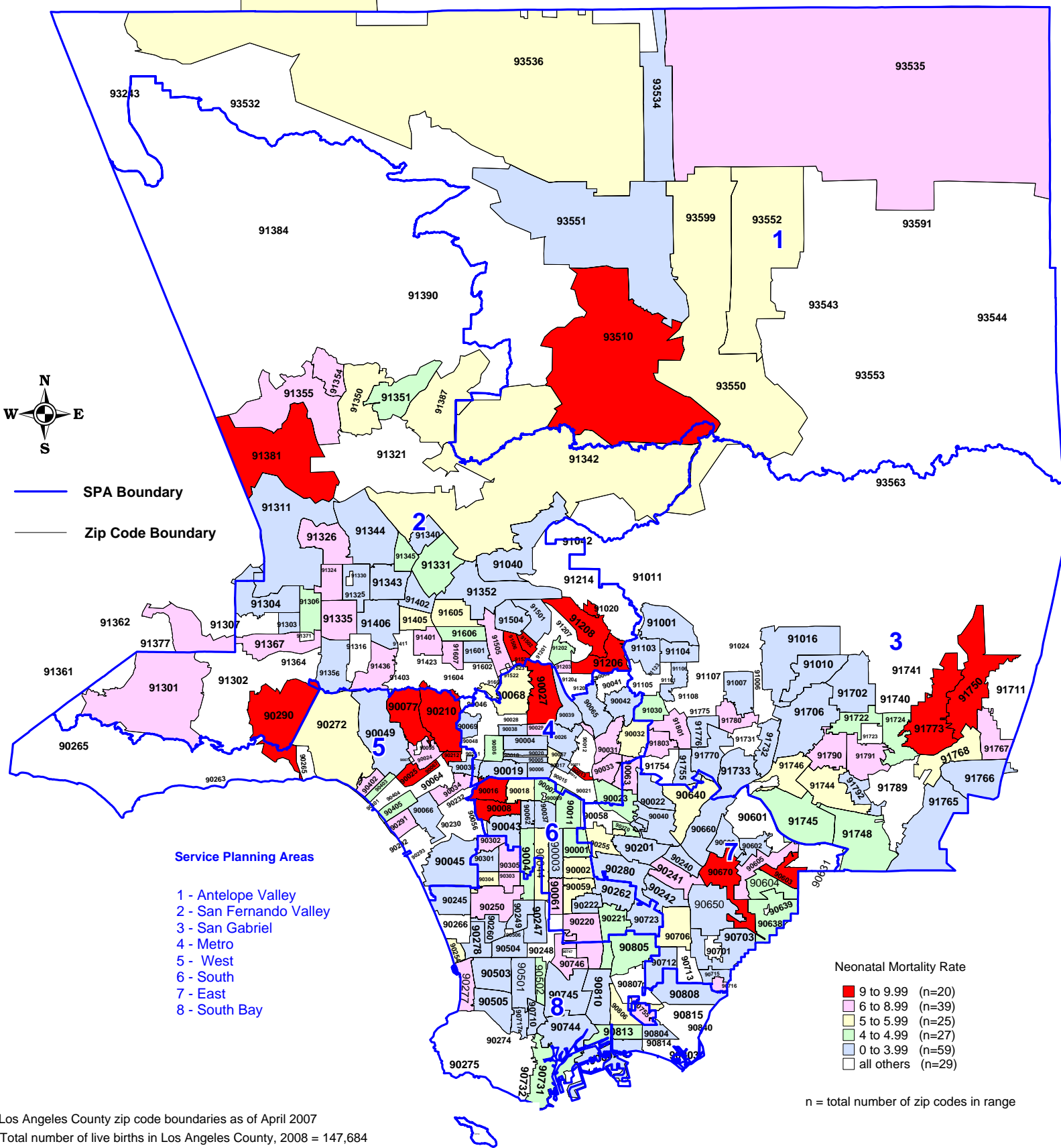
Total number of Neonatal deaths in Los Angeles County 2008 = 500

Note: Neonatal death is defined as death occurring less than 28 days of age

Source: California Department of Public Health, Center for Health Statistics, OHIR Vital Statistics Section, 2008

Neonatal Mortality Rate by Zip Code* and Service Planning Area (SPA)

Los Angeles County, 2008



- Service Planning Areas**
- 1 - Antelope Valley
 - 2 - San Fernando Valley
 - 3 - San Gabriel
 - 4 - Metro
 - 5 - West
 - 6 - South
 - 7 - East
 - 8 - South Bay

Neonatal Mortality Rate

9 to 9.99	(n=20)
6 to 8.99	(n=39)
5 to 5.99	(n=25)
4 to 4.99	(n=27)
0 to 3.99	(n=59)
all others	(n=29)

n = total number of zip codes in range

*Los Angeles County zip code boundaries as of April 2007
 Total number of live births in Los Angeles County, 2008 = 147,684
 Neonatal Mortality Rate in Los Angeles County, 2008 = 3.4 per 1,000 live birth
 Note: Neonatal mortality rate is defined as death occurring less than 28 days of age
 HP Objective : Reduce the neonatal mortality rate to no more than 2.9 per 1,000 live births
 Source: California Department of Public Health, Center for Health Statistics, OHIR Vital Statistics Section, 2008

TITLE V INDICATOR TEMPLATE

INDICATOR: Post-Neonatal Mortality Rate

DEFINITION: The number of infant deaths occurring from 28 through 364 days of age per 1,000 live births

NUMERATOR: The number of infant deaths occurring from 28 through 364 days of age, by place of residence, in a calendar year

DENOMINATOR: The total number of live births, by place of residence, in a calendar year

HEALTHY PEOPLE 2010 OBJECTIVE:

Reduce the post-neonatal mortality rate to no more than 1.2 per 1,000 live births.
(Baseline: 2.4 per 1,000 live births in 1998) (Objective 16-1e)

RISK FACTORS:

Congenital anomalies; injuries; infection in late pregnancy; family history of SIDS; maternal smoking or drug use; young maternal age (teen births); race/ethnicity (African American, Puerto Rican)

See also risk factors for infant mortality.

Year	California				Los Angeles County			
	Post-Neonatal Mortality		95% Confidence Interval		Post-Neonatal Mortality		95% Confidence Interval	
	Deaths	Rate	Lower	Upper	Deaths	Rate	Lower	Upper
1999	944	1.8	1.7	1.9	280	1.8	1.6	2.0
2000	927	1.7	1.6	1.9	246	1.6	1.4	1.8
2001	926	1.8	1.6	1.9	277	1.8	1.6	2.0
2002	953	1.8	1.7	1.9	287	1.9	1.7	2.1
2003	910	1.7	1.6	1.8	250	1.6	1.4	1.8
2004	904	1.7	1.6	1.8	253	1.7	1.5	1.9
2005	936	1.7	1.6	1.8	246	1.6	1.4	1.8
2006	880	1.6	1.5	1.7	231	1.5	1.3	1.7
2007	934	1.6	1.5	1.8	241	1.6	1.4	1.8
2008	904	1.6	1.5	1.7	242	1.6	1.4	1.8

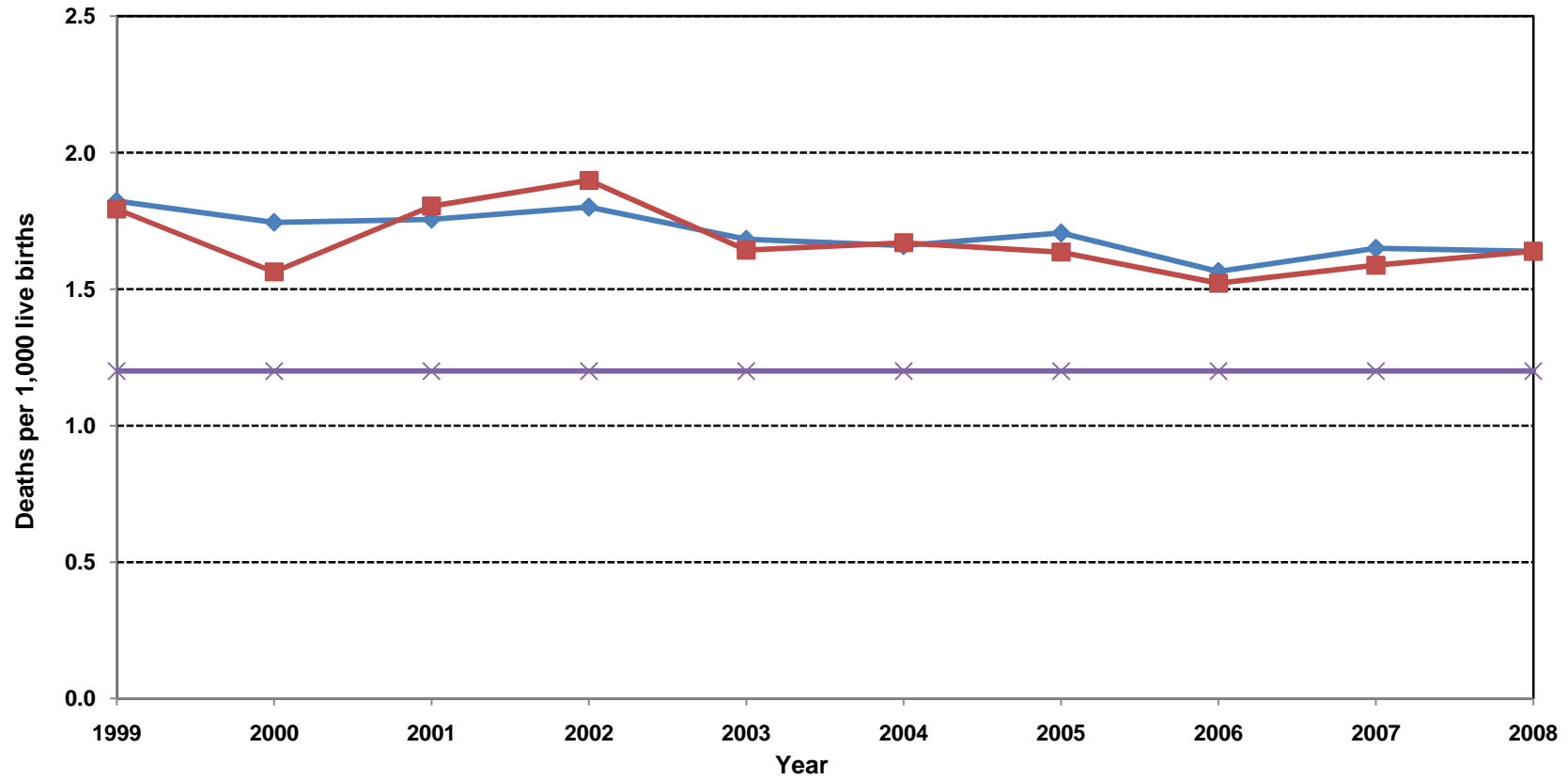
Year	Denominator: Live Births	
	California	LA County
1999	518,073	156,153
2000	531,285	157,391
2001	527,371	153,523
2002	529,245	151,167
2003	540,827	152,192
2004	544,685	151,504
2005	548,700	150,377
2006	562,157	151,837
2007	566,137	151,813
2008	551,567	147,684

Healthy People 2010: Reduce the post-neonatal mortality rate to no more than 1.2 per 1,000 live births.

Source: California Department of Public Health, Center for Health Statistics, OHIR Vital Statistics Section, 1999-2008

**Post-Neonatal Deaths per 1,000 Live Births
California vs. Los Angeles County, 1999-2008**

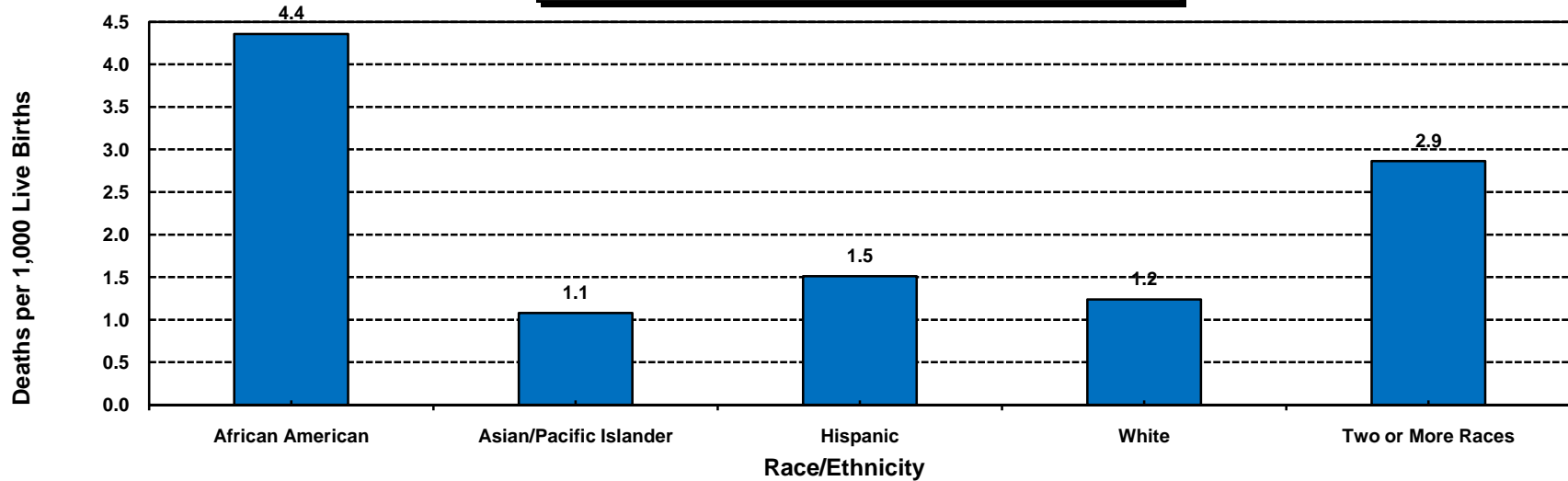
California Los Angeles County Healthy People 2010



Year 2010 Objective: Reduce the post-neonatal mortality rate to no more than 1.2 per 1,000 live births.

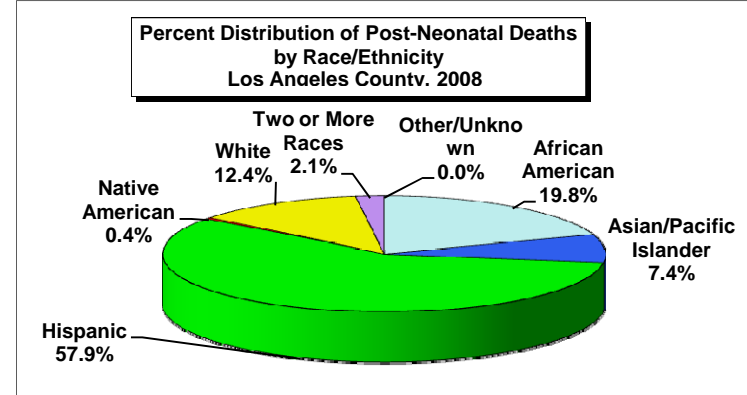
Source: California Department of Public Health, Center for Health Statistics, OHIR Vital Statistics Section, 2008

Post-Neonatal Mortality Rate by Race/Ethnicity Los Angeles County, 2008



Los Angeles County, 2008				
Race/Ethnicity	Post-Neonatal Mortality		95% Confidence Interval	
	Deaths	Rate	Lower	Upper
African American	48	4.4	3.1	5.6
Asian/Pacific Islander	18	1.1	0.6	1.6
Hispanic	140	1.5	1.3	1.8
Native American	<5	N/C	N/C	N/C
White	30	1.2	0.8	1.7
Two or More Races	5	2.9	0.4	5.4
Other/Unknown	<5	N/C	N/C	N/C
Total	242	1.6	1.4	1.8

Total Live Births
11,016
16,667
92,643
170
24,238
1,747
1,203
147,684



Year 2010 Objective: Reduce the post-neonatal mortality rate to no more than 1.2 per 1,000 live births.

Note: Post-neonatal mortality rate is defined as infant deaths occurring from 28 through 364 days of age per 1,000 live births.

Racial/ethnic categorization has been revised in this report; data from previous year reports may not be comparable.

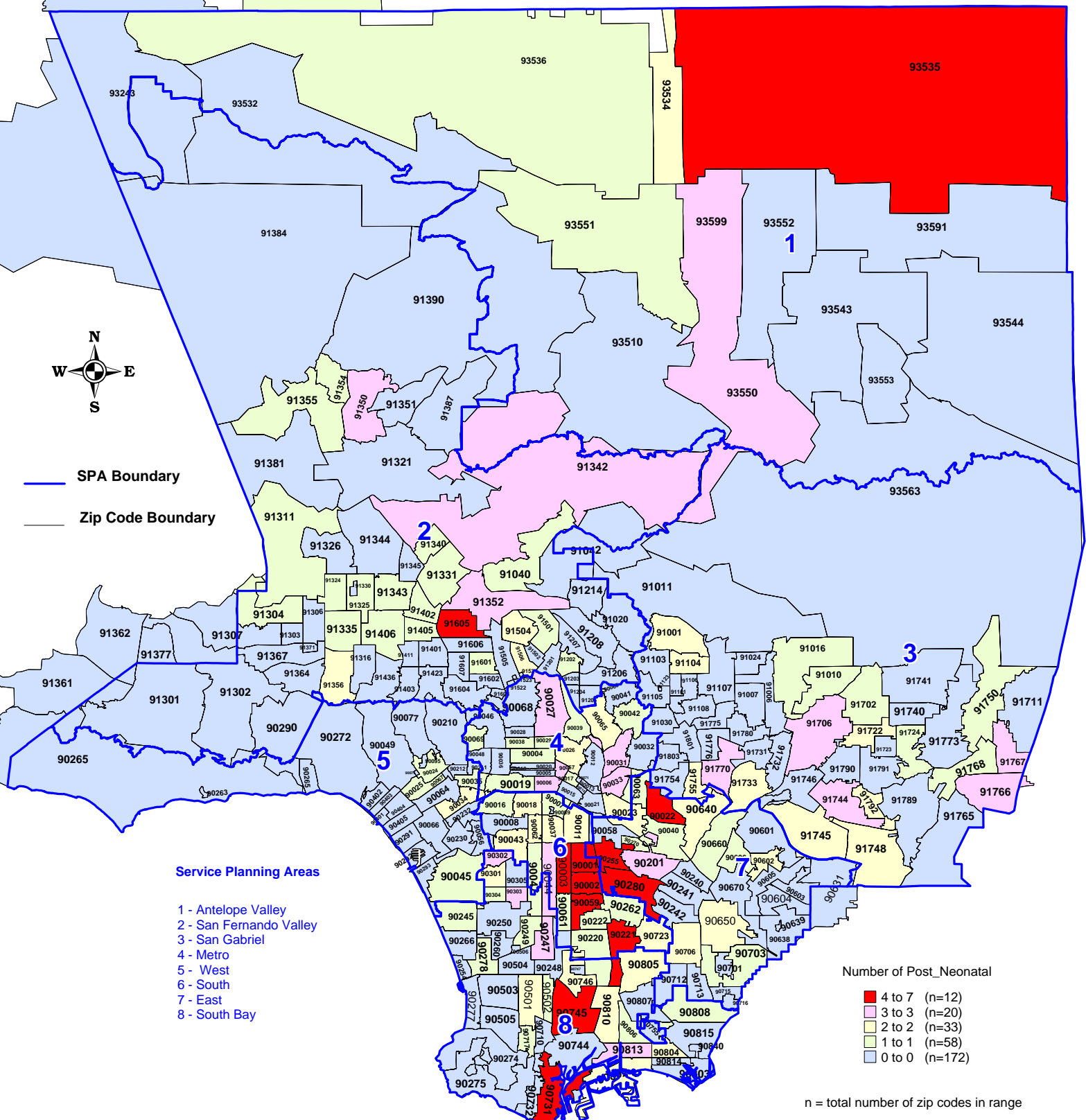
African American, Asian/Pacific Islander, Native American, White and other races exclude Hispanic ethnicity. Hispanic includes any race category.

Numbers fewer than 5 are shown as "<5". Rates are not calculated (N/C) if number is fewer than five.

Source: California Department of Public Health, Center for Health Statistics, OHIR Vital Statistics Section, 2008

Number of Post-Neonatal Deaths by Zip Code* and Service Planning Area (SPA)

Los Angeles County, 2008

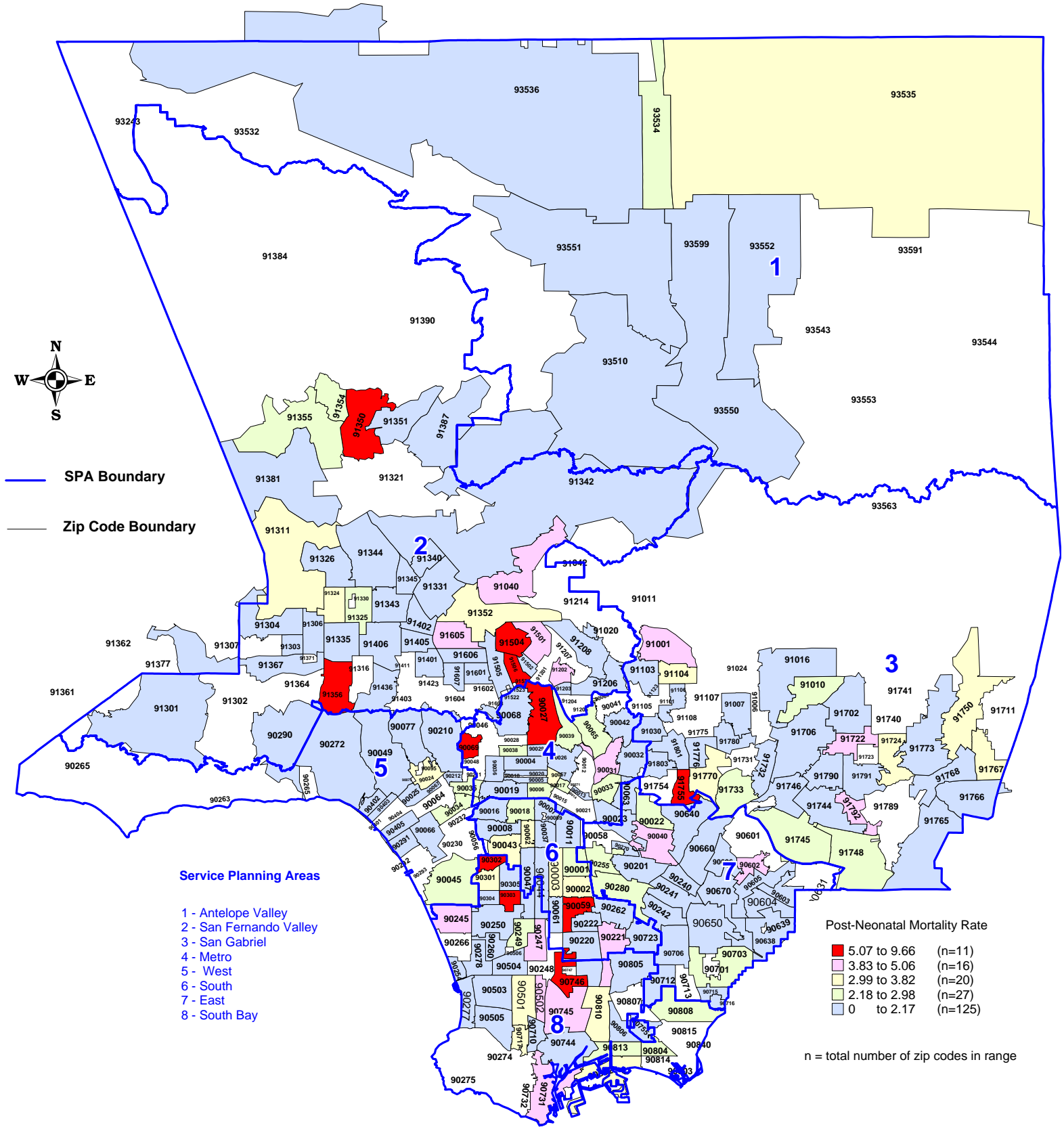


* Los Angeles County zip code boundaries as of April 2007
 Total number of live births in Los Angeles County, 2008 = 147,684
 Total number of Post neonata deaths in Los Angeles County, 2008 = 242

Note : Post-neonatal death is defined as deaths occurring from 28 through 364 days of age
 Source : California Department of Public health, Center for Health statistics, OHIR Vital Statistics Section, 2008

Post-Neonatal Mortality Rate by Zip Code* and Service Planning Area (SPA)

Los Angeles County, 2008



* Los Angeles County zip code boundaries as of April 2007
 Total number of live births in Los Angeles County, 2008 = 147,684
 Neonatal Mortality Rate in Los Angeles County, 2008 = 1.6 per 1,000 live births
 Note : Post-neonatal mortality rate is defined as infant deaths occurring from 28 through 364 days of age per 1,000 live births
 HP 2010 Objective : Reduce the neonatal mortality rate to no more than 1.2 per 1,000 live births
 Source : California Department of Public Health, Center for Health Statistics OHIR Vital Statistics Section, 2008