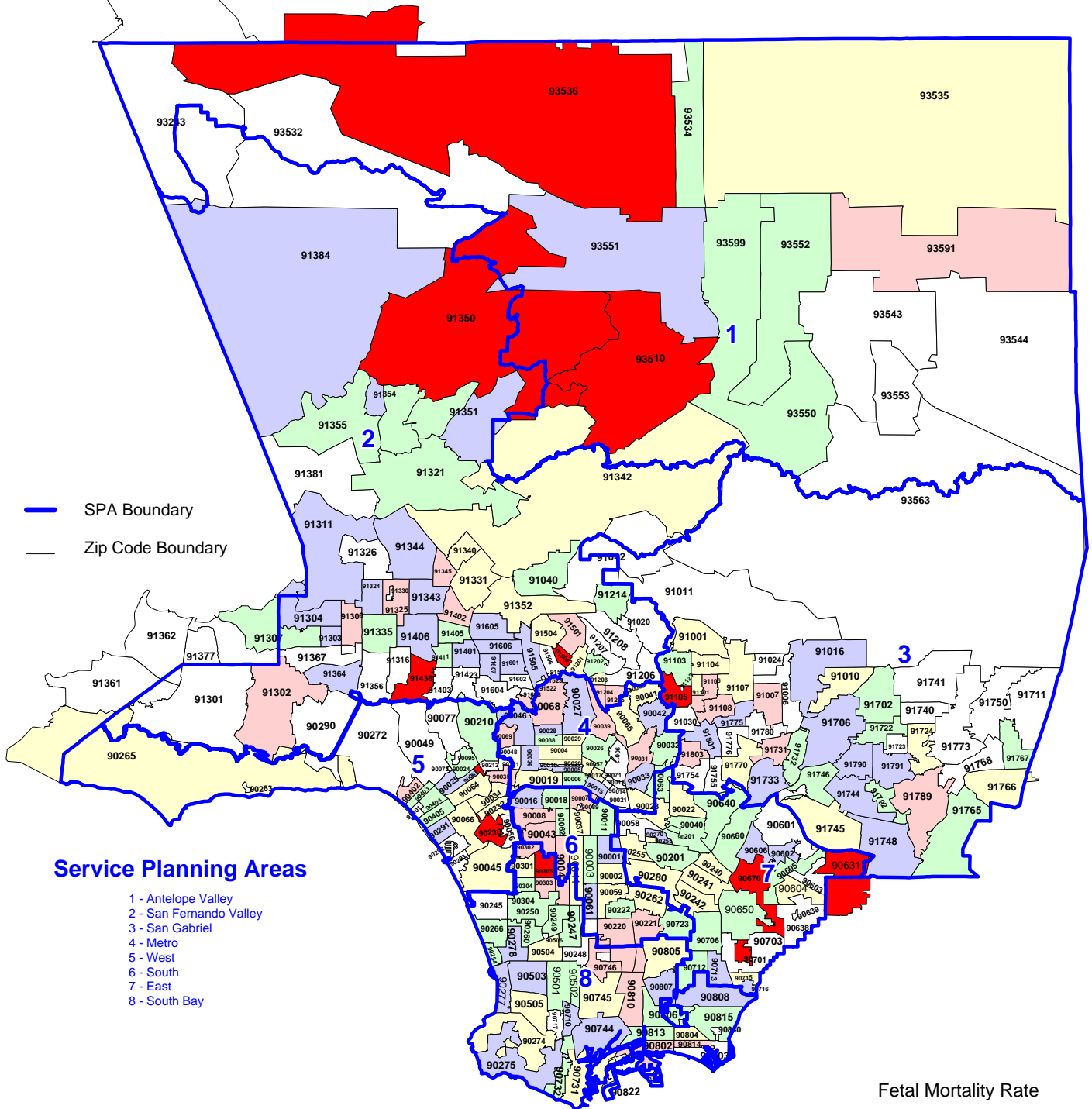


Fetal Mortality Rate by Zip Code* and Service Planning Area (SPA)

Los Angeles County, 2002



* Los Angeles County zip code boundaries as of April 2002

Total number of live births in Los Angeles County, 2002 = 151,167

Total number of fetal deaths in Los Angeles County, 2002 = 740

Note: Fetal mortality rate is defined as death occurring at 20 weeks or more gestation per 1,000 live births plus fetal deaths

Source: California Department of Health Services, Center for Health Statistics, Vital Statistics, 2002

n = total number of zip codes in range