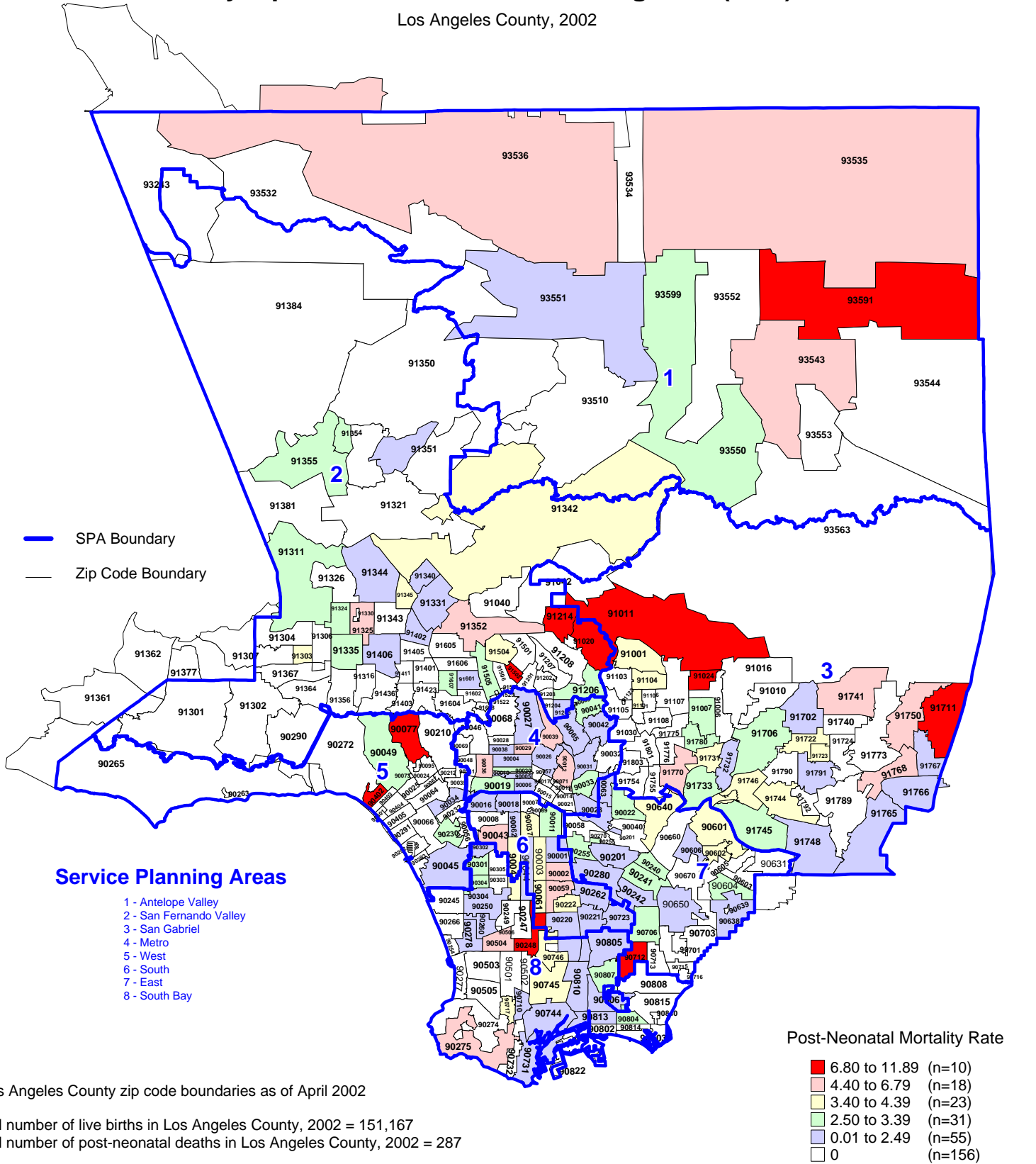


Post-Neonatal Mortality Rate by Zip Code* and Service Planning Area (SPA)

Los Angeles County, 2002



* Los Angeles County zip code boundaries as of April 2002

Total number of live births in Los Angeles County, 2002 = 151,167
 Total number of post-neonatal deaths in Los Angeles County, 2002 = 287

Note: Post-neonatal mortality rate is defined as death occurring at between 28 and 365 days of age per 1,000 live births

n = total number of zip codes in range

Source: California Department of Health Services,
 Center for Health Statistics, Vital Statistics, 2002