



STAND TOGETHER
— AGAINST —
NEIGHBORHOOD DRILLING



MISSION STATEMENT

STAND-LA. is an environmental justice coalition of community groups that seek to end neighborhood drilling to protect the health and safety of Angelenos on the front lines of urban oil extraction.

WHO WE ARE



We are concerned residents, good neighbors, communities of faith, environmental justice champions, researchers, nurses, students, mothers and fathers.

Founding Coalition Members

- Communities for a Better Environment
- Esperanza Community Housing Corporation
- Holman United Methodist Church
- Physicians for Social Responsibility - Los Angeles
- Redeemer Community Partnership



WHAT IS NEIGHBORHOOD DRILLING?

Neighborhood drilling happens when oil is extracted dangerously close to homes, schools, and even hospitals.

In 2015, a panel of independent scientists concluded that “community public health risks of exposures to toxic air contaminants...are *most significant within 1/2 mile from active oil and gas development.*”*

In Los Angeles, there are **130 schools, 184 daycare facilities, 213 elderly homes** and nearly **628,000 residents** within a half mile of an active oil well.*

*Source: A 2015 report by the California Council on Science and Technology (CCST)

WHAT ARE THE IMPACTS OF NEIGHBORHOOD DRILLING?



Oil drilling operations release toxic chemicals like hydrogen sulfide gas, methane, benzene, carcinogens and endocrine disruptors. As these dangerous emissions are pumped into the air that our families breathe, our community's health suffers from:

- headaches
- upper respiratory illness
- asthma
- nausea
- nosebleeds
- increase in cancer risk

These risks are further magnified in children, whose bodies are more susceptible to toxic pollution.

ANGELENOS AT RISK

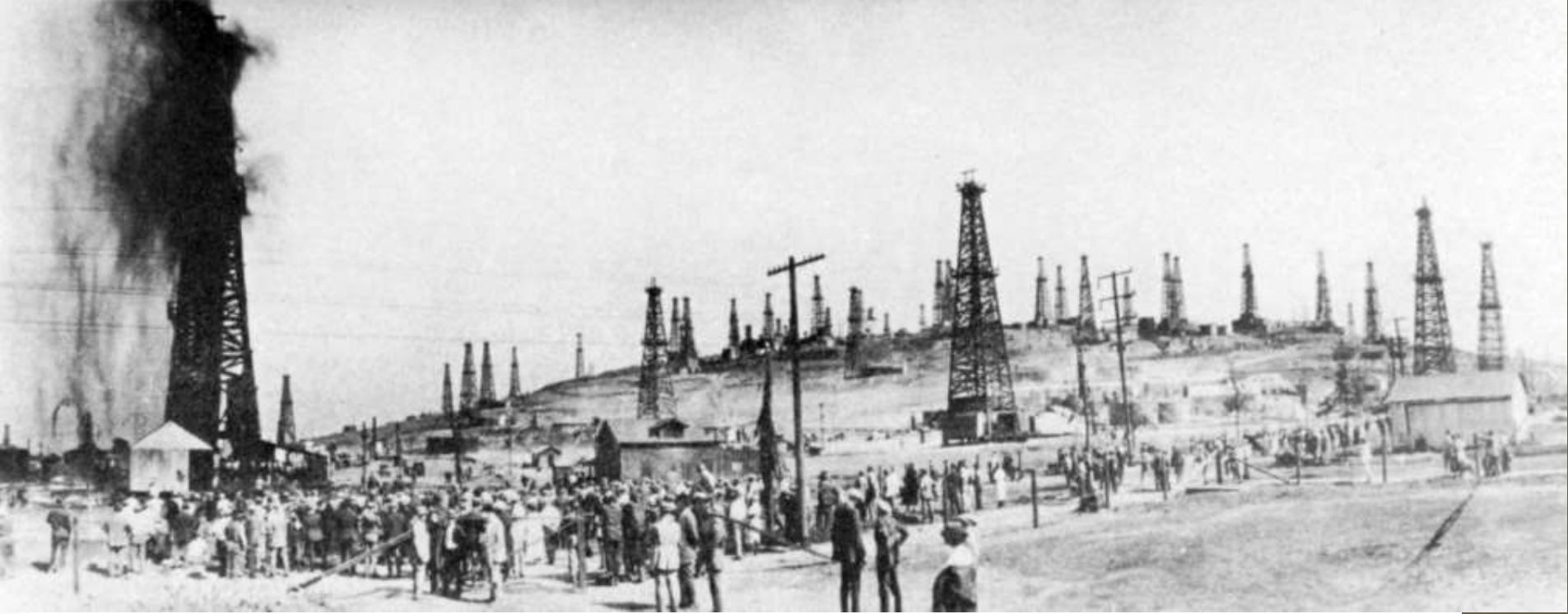


Los Angeles sits atop the nation's largest urban oil field, which poses a unique public health risk that is magnified by our population density.

This risk is disproportionately concentrated in communities of color that already suffer from cumulative health, environmental and economic burdens.

Neighborhood drilling is fundamentally a matter of racial and economic injustice.





Los Angeles Oil Production trends

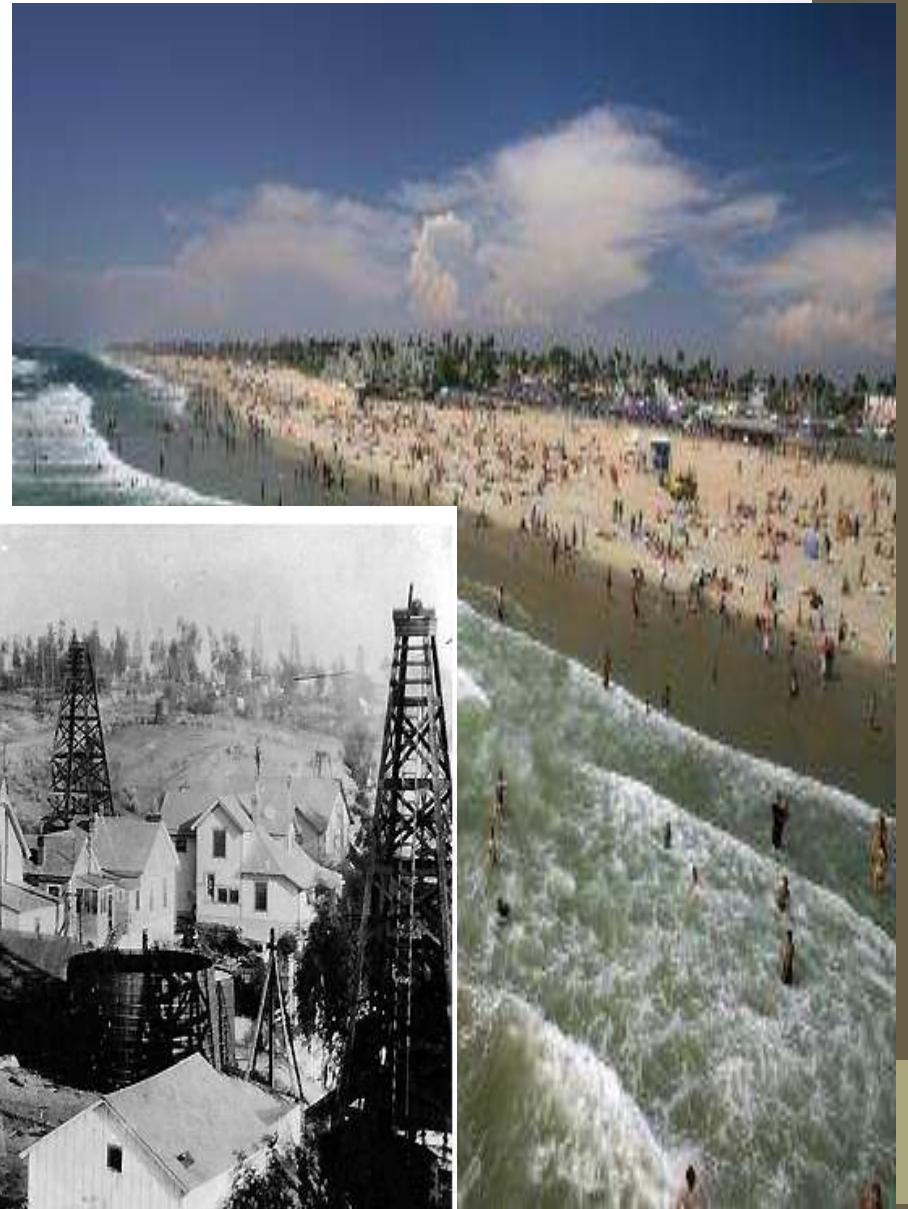
Boom town



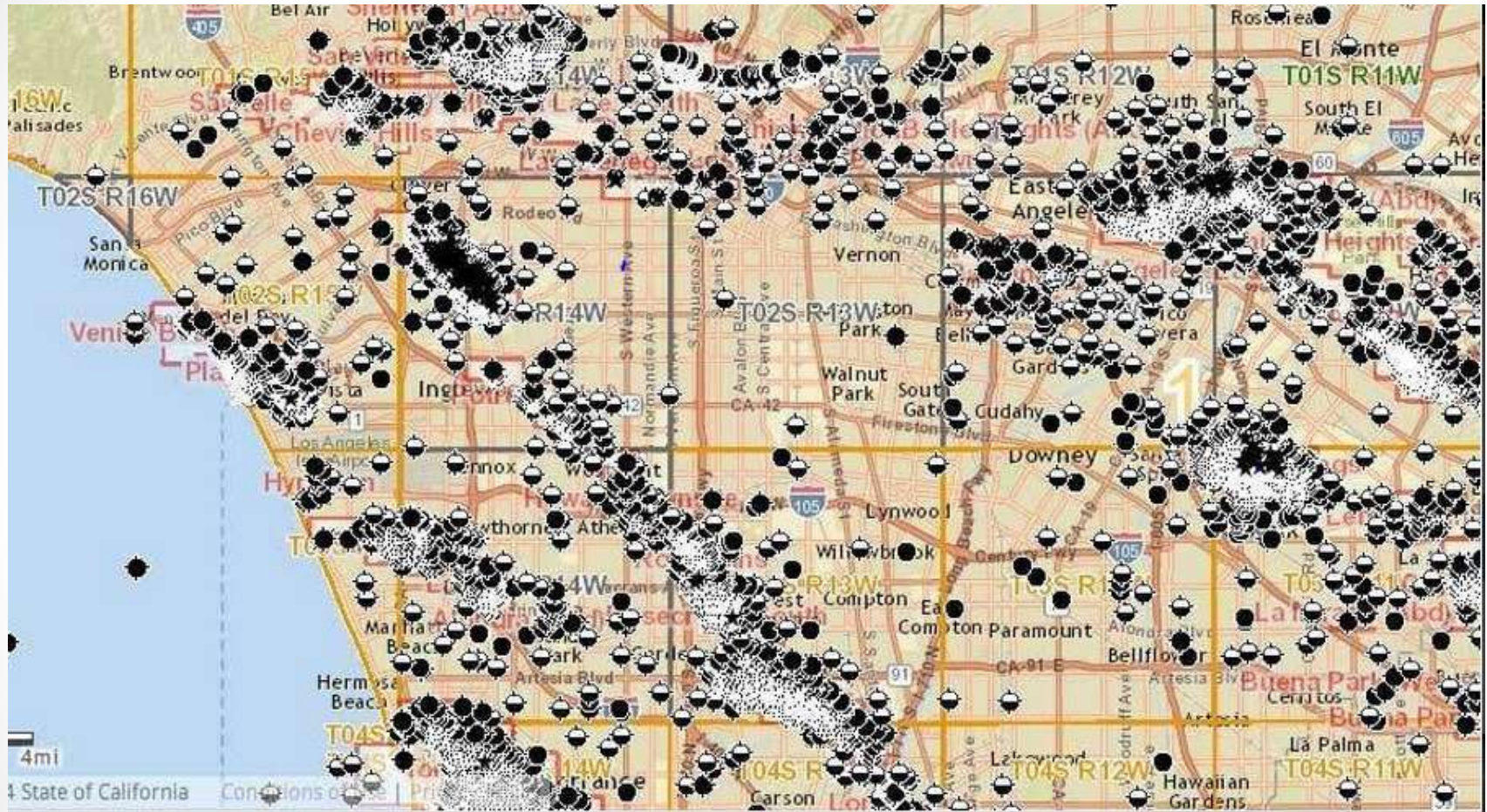
Emma Summers' business acumen put her in control of the Los Angeles City oil field's production – and earned her oil queen title.



Oil wells along Huntington Beach. Courtesy of the (



Oil wells in Los Angeles, 1905. Photo: born1945 on Flickr, CC BY-SA 2.0



5,194

Number of active oil wells in the County of Los Angeles

70%

Percentage of active oil wells in City of Los Angeles located within 1,500 feet of a home or sensitive land use such as a school or hospital

50%+

Percentage of census tracts in L.A. County (many of them close to active oil wells) that ALREADY rank in the state's top 20% of most environmentally polluted and socially vulnerable areas according to CalEnviroScreen

280-400 GALLONS

Amount of wastewater produced for every barrel of crude oil extracted

WORST IN THE U.S.

Rating by the American Lung Association of L.A.'s air pollution from ozone, also known as "smog." Oil production has been linked to increased smog levels

County	Well Count *		Oil Production (bbl) **	Net Gas Production			Water Production (bbl)
	Active	Inactive		Associated Gas (Mcf)	Nonassociated Gas (Mcf)	Total Gas (Mcf)	
Alameda.	6	1	14,601	0	0	0	46,052
Butte.	26	1	0	0	51,839	51,839	420
Colusa	225	129	0	0	9,886,381	9,886,381	104,561
Contra Costa	45	17	454	0	843,518	843,518	8,764
Fresno	1,946	1,571	5,992,763	714,642	357	714,999	66,040,632
Glenn.	259	60	0	0	8,521,530	8,521,530	80,390
Humboldt	26	29	0	0	638,124	638,124	7,420
Kern	42,875	15,803	141,481,290	160,638,575	2,904,518	163,543,093	1,828,374,391
Kings	175	188	137,127	190,197	153,748	343,945	908,558
Los Angeles	3,690	1,552	24,130,729	18,275,394	241,297	18,516,691	798,857,241
Madera	23	18	0	0	967,873	967,873	1,656





Aerial View of Allenco, Photo courtesy Google Maps and SCAQMD



View of Allenco from Esperanza CHC, Neon Tommy

Population Density and Percent Children and Elderly in Selected Areas Hosting Oil Production Facilities

LOCATION	POPULATION (2010)	LAND AREA (sq ²)	POP DENSITY (10 ³ persons /sq ²)	POPULATION AGE < 5	POPULATION AGE > 64
L.A. County	9,818,605	2,477	3,964	5.4%	13.1%
L.A. City	3,775,046	470	8,032	7.6%	8.5%
Within 1,500 ft. of an active L.A. City well	123,147	19.57	6,293	4.4%	11.2%
University Park-Allenia	6,382	0.25	25,528	4.2%	5.9%
Historic West Adams-Jefferson	7,729	0.25	30,916	7.1%	6.9%
Historic West Adams-Murphy	5,516	0.25	22,064	5.9%	13.6%
Wilkington- Warren E&P	4,258	0.42	10,138	10.0%	7.3%
Baldwin Hills- Inglewood Oil Field	5,501	1.59	3,462	4.0%	20.7%

Analysis by authors using the 2010 US Census and Southern California Association of Governments, 2008.

Nothing to worry
about

March 24, 1985
Fairfax Department Store Explosion

Los Angeles Times

Blast Shatters Store; 23 Hurt

Explosion May Be Tied to Abandoned Oil Field



Wagon in front
Hurt 23

Hospital Says Close to 20
in Hospital on MN. Expects

U.S. Plans to
Send Support



Smoke rises hundreds of feet into the air from a fire at the Texaco refinery in Wilmington in 1996. (Bob Chamberlin / Los Angeles Times)

By **LOS ANGELES TIMES STAFF**



[Health Concerns Mount After Refinery Explosion Coats California City With White Ash](#)
BY [EMILY ATKIN](#) & [SACHA FEINMAN](#) POSTED ON FEBRUARY 20, 2015 AT 3:12 PM AT CLIMATE PROGRESS



19,000 Gallon Pipeline Spew
Los Angeles | May 15, 2014

Moving Fossil Fuels



Aerial view after a tanker crashed off the Long Beach (710) Freeway in the city of Commerce on Sunday, Oct. 27, 2013.



A tanker truck carrying 8,000 gallons of crude oil exploded in flames on the 710 Freeway, the driver was badly injured. His truck was incinerated and was hanging off the freeway overpass located over Noakes Street, near S. Sydney Drive, in Commerce. (Courtesy of Joseph Rios)

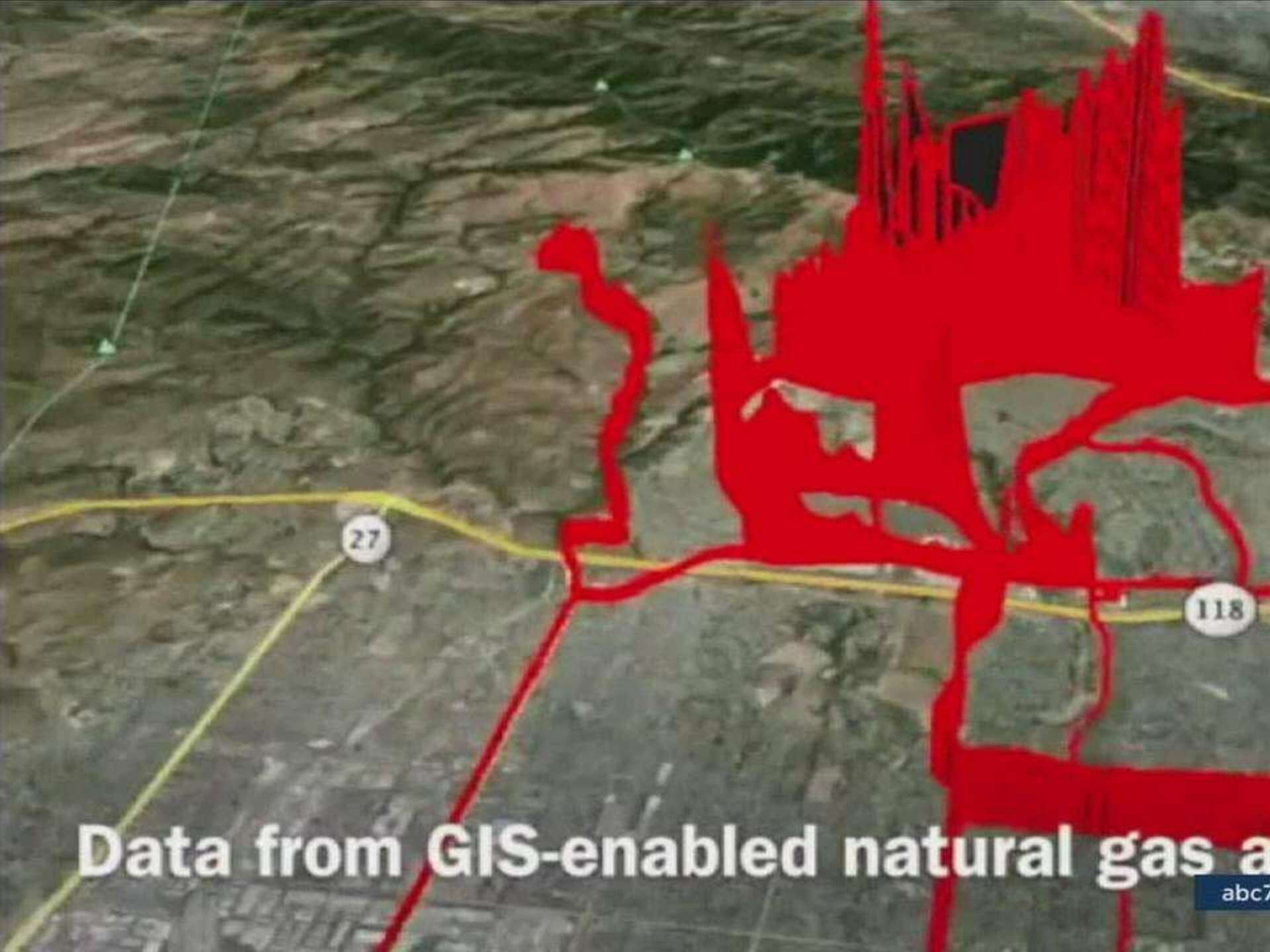
Dozens of firefighters arrived just after 3:30 p.m. to battle the huge fire, which could be seen as far as downtown Los Angeles.



Colleen Williams
@ColleenNBCLA



Follow



Data from GIS-enabled natural gas a

Turning to Health



Nancy Halpern Ibrahim, executive director of Esperanza Community Housing Corp., speaks during the town hall meeting. She holds a foam head depicting some of the systems residents are experiencing, such as headaches and nosebleeds. (credit: Los Angeles Times)



#THEDIRTYDOZEN

Throughout the Los Angeles Basin, oil companies reported repeated use of 12 notorious air toxics during extraction and production.

#TheDirtyDozen expose Californians to unacceptable health risks, including:



irritation to eyes, nose or skin



respiratory illness



cancer risk



damage to nervous system

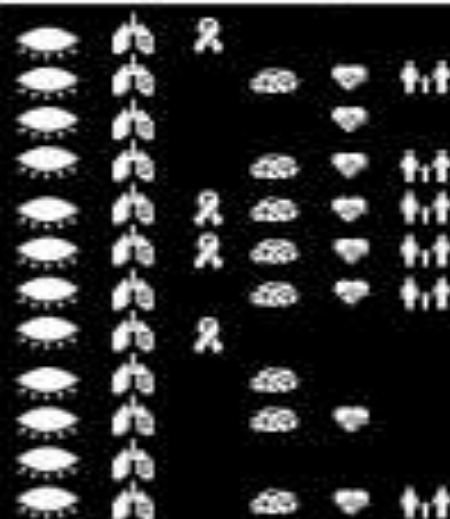


cardiovascular disease



reproductive & embryonic dysfunction

CRYSTALLINE SILICA
METHANOL
HYDROCHLORIC ACID
HYDROFLUORIC ACID
2-BUTOXYL ETHANOL
ETHYL GLYCOL
XYLENE
AMORPHOUS SILICA FIBRE
ALUMINIUM OXIDE
ACRYLIC POLYMER
ACETOPHENONE
ETHYLBENZENE



THE FULL EXTENT OF THE RISKS OF OIL RECOVERY TECHNIQUES IS STILL UNKNOWN.

Under SCAGMD rule, oil companies are allowed to keep the identity of certain used chemicals hidden from the public if the companies claim it is a "trade secret."

OIL DRILLING SITES IN LOS ANGELES ALSO EMIT SMOG-FORMING GASES THAT WORSEN LOS ANGELES' AIR QUALITY, INCLUDING:

HYDROGEN SULFIDE:
causes nausea, headaches, dizziness in low concentrations, and death, coma, and death in high concentrations.

BENZENE, TOLUENE & XYLENE:
causes headaches, respiratory irritation.

NITROGEN OXIDES (NOx)

causes increased death rates due to heart disease

VOLATILE ORGANIC COMPOUNDS (VOCs)

responsible for smog, increased asthma

Concentrations of carbon are as good as significantly higher levels of NOx. In California, causing 7,000 additional deaths per year.



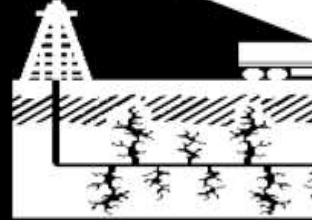
HEALTH EFFECTS OF CHEMICALS USED IN FRACKING

INFOGRAPHIC BY PHYSICIANS FOR SOCIAL RESPONSIBILITY- LOS ANGELES | WWW.PSR-LA.ORG
 BASED ON "NATURAL GAS OPERATIONS FROM A PUBLIC HEALTH PERSPECTIVE" | WWW.ENDOCRINEDISRUPTION.ORG
 COLBORN, THEO, ET AL. "NATURAL GAS OPERATIONS FROM A PUBLIC HEALTH PERSPECTIVE." HUMAN AND ECOLOGICAL RISK
 ASSESSMENT. AN INTERNATIONAL JOURNAL 17.5 (2011): 1039-1056.



BY THE NUMBERS

- 980** NUMBER OF FRACKING CHEMICAL "PRODUCTS" WE KNOW ABOUT
- 649** NUMBER OF CHEMICALS IN THE 980 FRACKING "PRODUCTS"
- 90%** "PRODUCTS" CONTAINING CHEMICALS THAT HAVE ADVERSE HEALTH EFFECTS
- 43%** "PRODUCTS" THAT WE KNOW LESS THAN 1% OF THE CHEMICALS IN THEM



WHAT'S A "PRODUCT"?



A PRODUCT MAY CONTAIN MORE THAN ONE CHEMICAL. A CHEMICAL MAY BE IN MORE THAN ONE PRODUCT.

FOR THE 56% OF FRACKING CHEMICALS WE CAN IDENTIFY



58%
SOLUBLE IN WATER

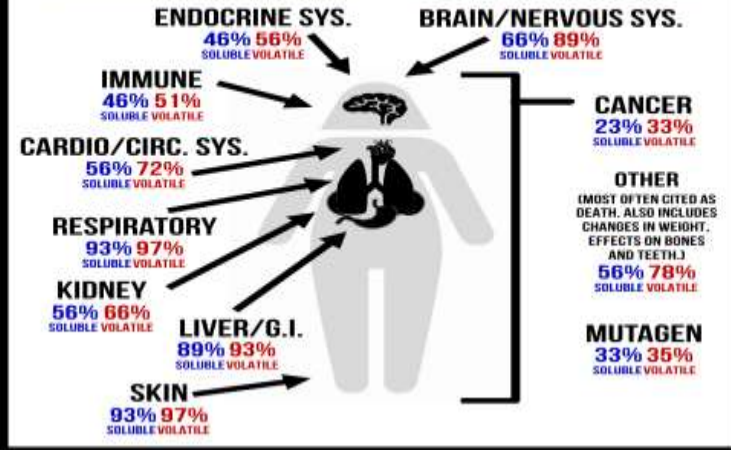


36%
VOLATILE
SMALLER PERCENTAGE, BUT BIGGER IMPACT. THESE CHEMICALS CAN BE INHALED, SWALLOWED, AND/OR ABSORBED THROUGH THE SKIN

ALL IMAGES FROM THE NOVA PROJECT — FRACKING: TOM ANANTWERP, STOMACH: SERIO DELGADO GARCIA, HEART: CATHERINE PLEASE, LUNGS: JORIS HODGEN-DOORN, WATER DROP: CHRIS DOBBINS, CLOUD: JAMES FENTON, QUESTION CLOUD: ANAS RAMADAN, WOMAN: LUIS PRADO

BODY SYSTEMS AFFECTED BY FRACKING CHEMICALS*

SHOWN WITH % OF CHEMICALS AFFECTING EACH BODY SYSTEM (SOLUBLE CHEMICALS IN BLUE AND VOLATILE CHEMICALS IN RED)



CHEMICALS WITH A "CAS" NUMBER

WHAT'S A "CAS" NUMBER?
 A "CAS" NUMBER IS A UNIQUE NUMBER ASSIGNED TO EVERY CHEMICAL DESCRIBED IN A SCIENTIFIC LITERATURE.



Dirty Dozen Report Report by Center for Biological Diversity-

Chemicals used in oil production

Rank			
1	Crystalline Silica	117	Harmful to skin, eyes and other sensory organs, respiratory system, immune system and kidneys; mutagen. Known human carcinogen. ⁵
2	Methanol	85	Harmful to skin, eyes and other sensory organs, respiratory system, gastrointestinal system and liver, brain and nervous system, immune system, kidneys, reproductive and cardiovascular system; mutagen, developmental inhibitor and endocrine disruptor.
3	Hydrochloric Acid	43	Harmful to skin, eyes and other sensory organs, respiratory system, gastrointestinal system and liver, immune system, cardiovascular system and blood.
4	Hydrofluoric Acid	16	Harmful to skin, eyes and other sensory organs, respiratory system, gastrointestinal system and liver, brain and nervous system, immune system, kidneys, reproductive system and cardiovascular system; mutagen, developmental inhibitor.
5	2-Butoxy Ethanol	13	Harmful to skin, eyes and other sensory organs, respiratory system, gastrointestinal system and liver, brain and nervous system, immune system, kidneys, reproductive system and cardiovascular system; mutagen, developmental inhibitor and endocrine disruptor; linked to liver cancer. Also linked to adrenal tumors. ⁶
6	Ethyl Glycol (Monobutyl Ether)	11	Harmful to skin, eyes and other sensory organs, respiratory system, gastrointestinal system and liver, brain and nervous system, immune system, kidneys, reproductive system and cardiovascular system; mutagen, developmental inhibitor, and endocrine disruptor; linked to liver cancer.

7	Xylene	10	Harmful to skin, eyes and other sensory organs, respiratory system, gastrointestinal system and liver, brain and nervous system, immune system, kidneys, reproductive and cardiovascular system; developmental inhibitor and endocrine disruptor.
8	Amorphous Silica Fume	7	Harmful to skin, eyes and other sensory organs, respiratory system, gastrointestinal system and liver; linked to lung cancer.
9	Aluminum Oxide	7	Harmful to skin, eyes and other sensory organs, respiratory system, and brain and nervous system.
10	Acrylic Polymer (Acid)	6	Harmful to skin, eyes and other sensory organs, respiratory system, gastrointestinal system and liver, brain and nervous system, immune system, kidneys and cardiovascular system; mutagen and developmental inhibitor.
11	Acetophenone	6	Causes skin irritation, corneal injury, hematological effects; possible damage to lung, kidney and liver. ⁷
12	Ethylbenzene	6	Harmful to skin, eyes and other sensory organs, respiratory system, gastrointestinal system and liver, brain and nervous system, kidneys, reproductive system and cardiovascular system; mutagen, developmental inhibitor and endocrine disruptor.

Month	Acidization	Gravel Packing	Fracking
June	35	22	4
July	54	32	6
August	81	41	1
Total⁸	170	95	11

South L.A.'s Allenco fined \$99,000 over toxic emissions



Allenco Energy Co. has agreed to cease operations at its South Los Angeles facility until a federal probe into fumes in the area is completed.
(Mark Boster / Los Angeles Times)

By **LOUIS SAHAGUN**
contact the reporter



Leonardo DiCaprio

@LeoDiCaprio

Follow

Oil drilling in L.A. occurs dangerously close to low-income communities of color. Neighborhood drilling is environmental injustice @STAND_LA

RETWEETS
3,609

LIKES
11,714



6:01 PM - 25 Feb 2016



Mark Ruffalo speaks to a bus of entertainment industry leaders and community members about the health and climate impacts of drilling. Photo by Vasco Lucas Nunes



STAND WITH US

- There are many ways we can work together to end neighborhood drilling in Los Angeles. Support a healthier Los Angeles by pledging to participate:

• STAND-LA CHAMPION

- By pitching in at the highest level of engagement as a STAND-LA Champion, you pledge to contribute your organization's support and resources to help further STAND's mission. This level of engagement could include participation in STAND's working groups or active advocacy in meetings with influencers, elected officials, and your sphere of influence.

STAND-LA AMBASSADOR

- Become a STAND-LA Ambassador to help broadcast key messages throughout the city. Help educate Angelenos about the risks of neighborhood drilling by co-hosting info sessions for your organization and sphere of influence, advocating for the cause on social media, spreading the word with community leaders, or writing letters of support.

STAND-LA SUPPORTER

- Even if you have little time or resources, you can help STAND-LA make an impact: show your support by offering your organization's endorsement to STAND-LA and our shared cause. Have your logo included on STAND-LA communications and declare a statement of support to demonstrate to elected leaders that we all stand in solidarity against drilling in our communities.

An aerial photograph of Los Angeles, California, showing a dense urban landscape with a mix of residential buildings, commercial structures, and green spaces. In the background, the city's skyline is visible under a cloudy sky. A multi-lane highway with traffic is seen on the left side of the image. The text 'STAND TOGETHER FOR LOS ANGELES' is overlaid in large, white, bold, sans-serif font. The word 'FOR' is smaller and positioned between two horizontal white lines that extend to the left and right edges of the text.

STAND TOGETHER
FOR
LOS ANGELES