

Fetal Deaths

INDICATOR: Fetal death

DEFINITION: The number of fetal deaths of 20 weeks or more gestation per 1,000 live births plus fetal deaths

NUMERATOR: The number of fetal deaths of 20 weeks or more gestation, by place of residence, in a calendar year

DENOMINATOR: The total number of live births plus fetal deaths, by place of residence, in a calendar year

HEALTHY PEOPLE 2000 OBJECTIVE:

Reduce the fetal death rate (20 or more weeks of gestation) to no more than 5 per 1,000 live births plus fetal deaths. (Baseline: 7.6 per 1,000 live births plus fetal deaths in 1987) (Objective 14.2)

RISK FACTORS: Race/ethnicity (African American); maternal diabetes; pregnancy complications; maternal medical complications/chronic illness during pregnancy (including severe maternal infection); Rh sensitization; congenital anomalies; intrauterine cocaine exposure; maternal history of miscarriage

	California				County			
	Fetal Death		95% Confidence Interval		Fetal Death		95% Confidence Interval	
Year	Number	Rate	Lower	Upper	Number	Rate	Lower	Upper
1990	3,989	6.5	6.3	6.7	1,433	7.0	6.6	7.3
1991	3,834	6.3	6.1	6.5	1,354	6.6	6.3	7.0
1992	3,704	6.1	5.9	6.3	1,247	6.3	5.9	6.6
1993	3,574	6.0	5.9	6.3	1,203	6.3	5.9	6.7
1994	3,299	5.8	5.6	6.0	1,153	6.4	6.0	6.7
1994	3,355	6.0	5.8	6.3	1,089	6.2	5.8	6.6
1996	3,330	6.1	5.9	6.4	1,132	6.7	6.3	7.0
1997	3,094	5.9	5.7	6.1	994	6.1	5.7	6.5

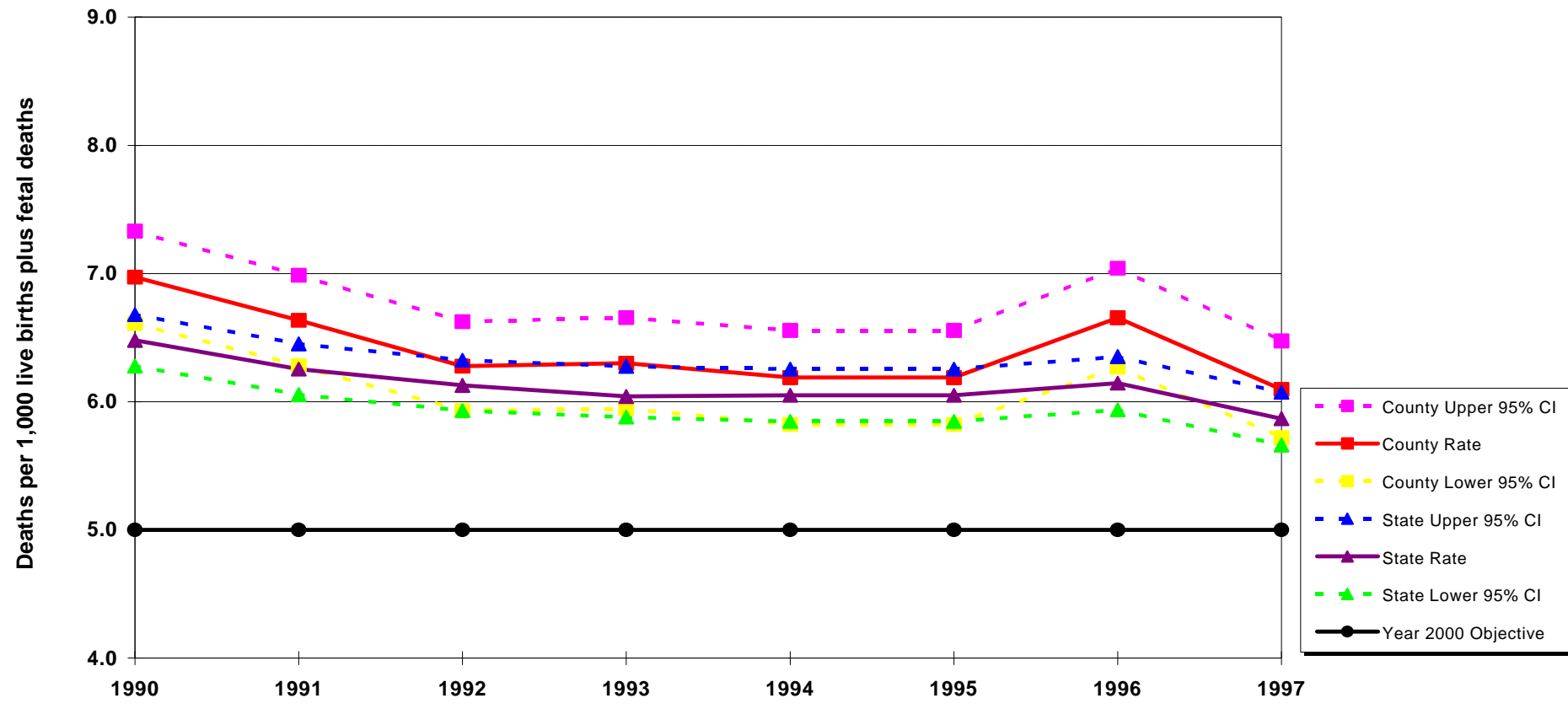
DENOMINATOR: Total Births*	
State	County
615,655	205,557
613,062	204,091
604,542	198,662
588,057	190,909
570,333	181,547
554,581	175,951
541,958	170,105
527,268	163,030

Source: 1990-1997 birth and fetal death records from California Department of Health Services, Center for Health Statistics

Note: *Total births = number of live births + number of fetal deaths



Fetal Deaths per 1,000 Live Births plus Fetal Deaths California vs. Los Angeles County, 1990 - 1997



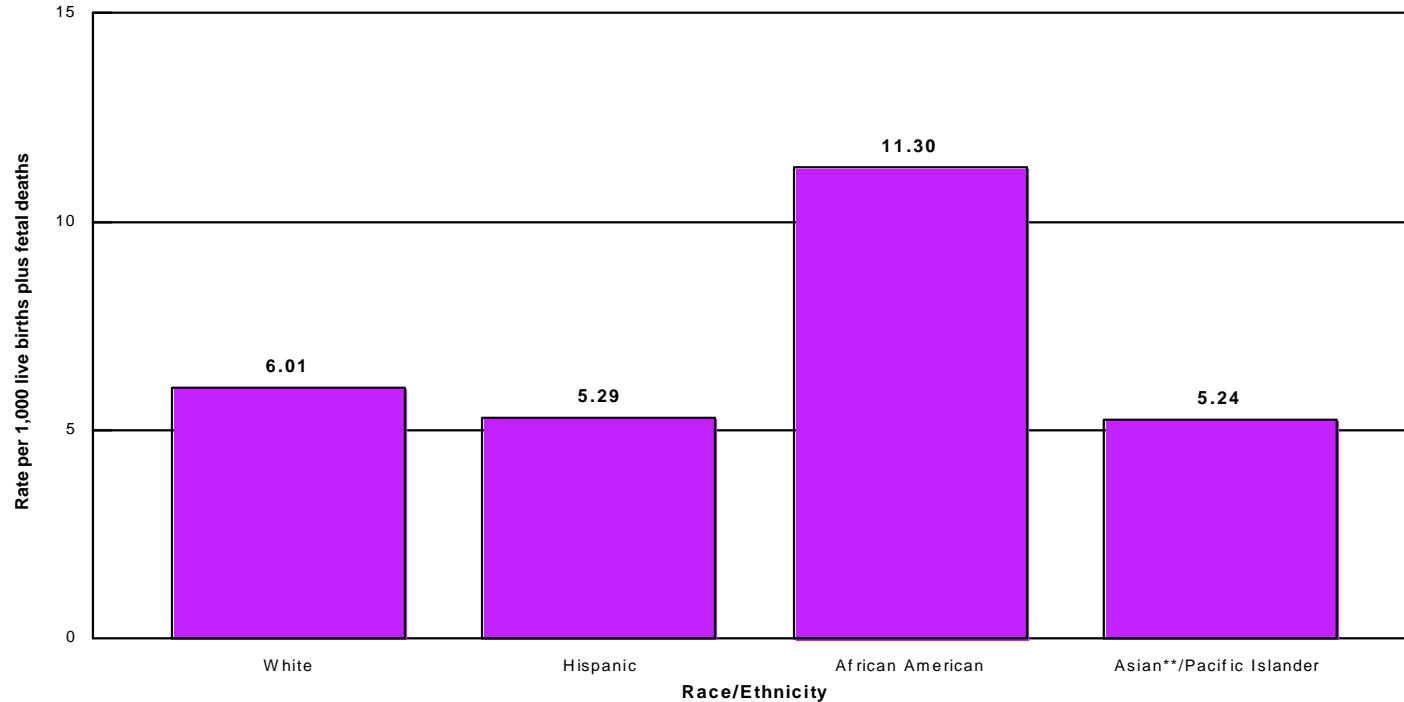
Year 2000 Objective: Reduce the fetal death rate (20 or more weeks of gestation) to no more than 5 per 1,000 live births plus fetal deaths.

Source: 1990-1997 birth and fetal death records from California Department of Health Services, Center for Health Statistics



Fetal Mortality Rate by Mother's Race/Ethnicity*

Los Angeles County, 1997



Los Angeles County, 1997				
Fetal Mortality Rate	Number	Rate	95% Confidence Interval	
			Lower	Upper
White	188	6.01	5.16	6.87
Hispanic	533	5.29	4.84	5.74
African American	166	11.30	9.59	13.00
Asian** /Pacific Islander	82	5.24	4.11	6.38
Native American	1	a	a	a
Other / Unknown	24	64.52	39.55	89.48
Total	994	6.10	5.72	6.47

Total Births / Race	
White	31,260
Hispanic	100,761
African American	14,696
Asian**	15,636
Native American	305
Other / Unknown	372
Total	163,030

* White, African American, Asian, Native American and other races exclude Hispanic ethnicity

Hispanic includes any race category

** Filipino is included in Asian

Child's Hispanic origin is from mother's Hispanic origin

a: Rates are not calculated if no more than five deaths.

Year 2000 Objective: Reduce the fetal death rate (20 or more weeks of gestation) to no more than 5 per 1,000 live births plus fetal deaths.

Note: Fetal mortality rates are fetal deaths per 1,000 live births plus fetal deaths.

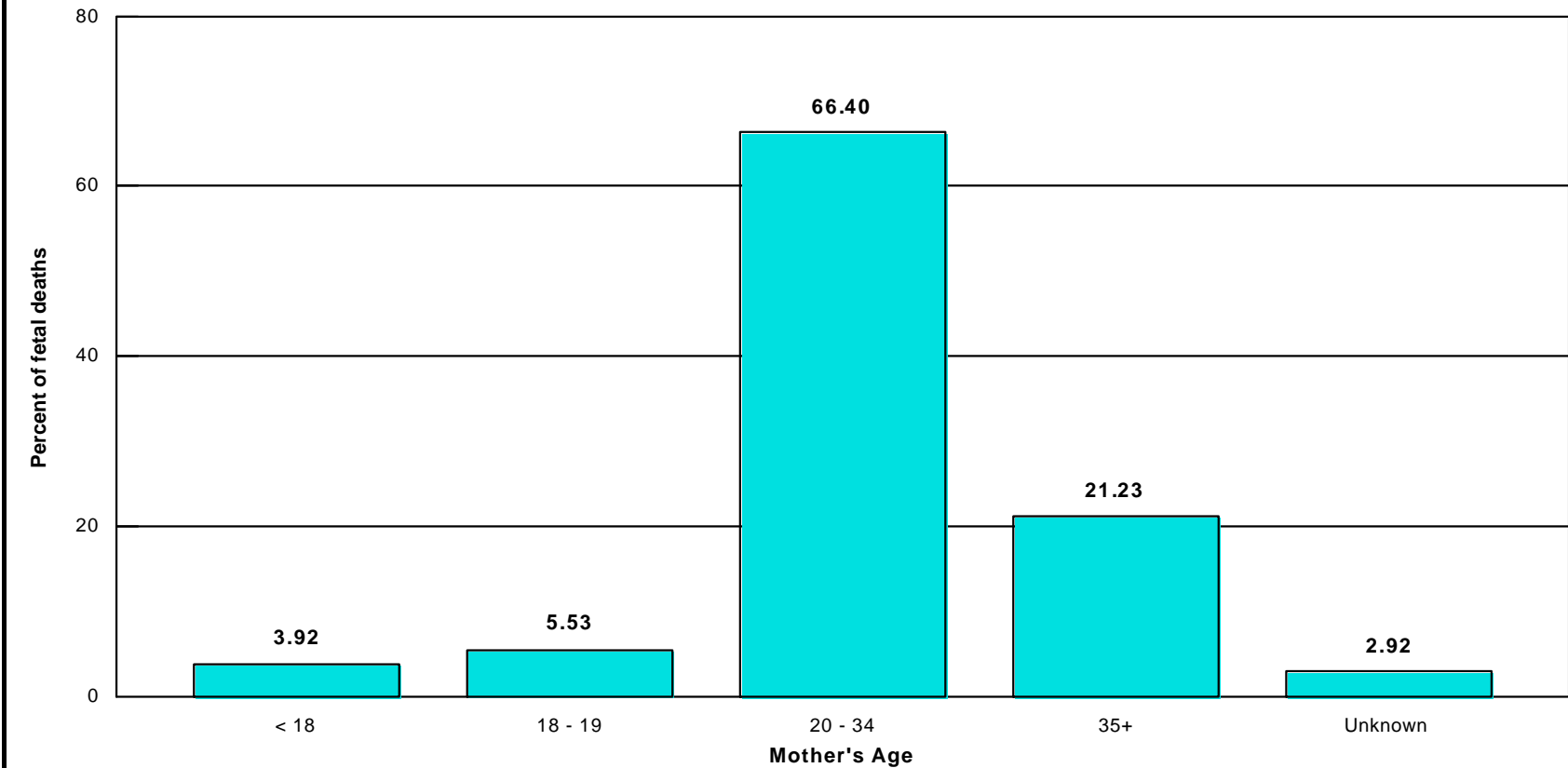
Fetal deaths are those occurring during 20 weeks or more gestational period.

Source: 1997 birth and fetal death records from the California Department of Health Services, Center for Health Statistics



Percent of Fetal Deaths by Mother's Age

Los Angeles County, 1997



Mother's Age									
< 18		18 - 19		20 - 34		35+		Unknown	
Number	Percent	Number	Percent	Number	Percent	Number	Percent	Number	Percent
39	3.92	55	5.53	660	66.40	211	21.23	29	2.92

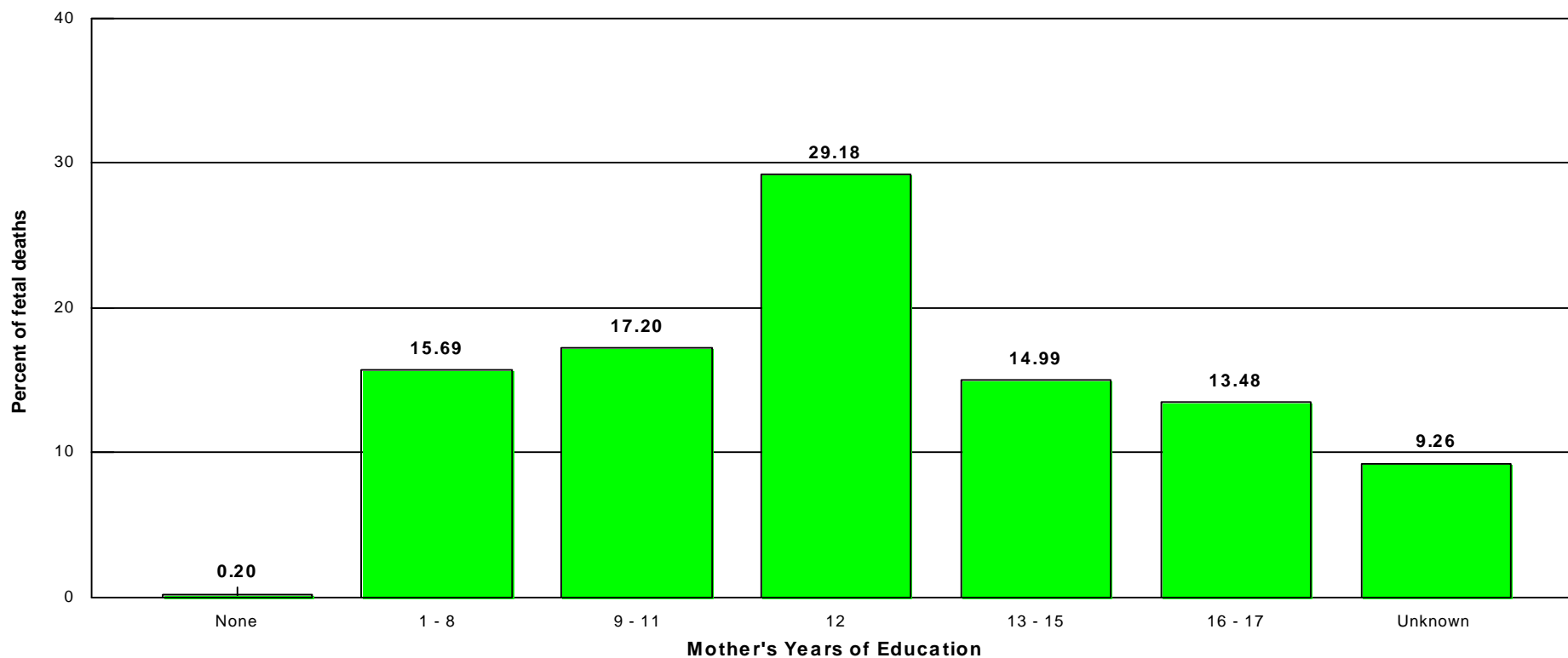
Note: Total fetal deaths in 1997 = 994

Fetal deaths are those occurring during 20 weeks or more gestational period.

Source: 1997 fetal death records from the California Department of Health Services, Center for Health Statistics

Percent of Fetal Deaths by Mother's Years of Education

Los Angeles County, 1997



Years of Education													
None		1 - 8		9 - 11		12		13 - 15		16 - 17		Unknown	
Number	Percent	Number	Percent	Number	Percent	Number	Percent	Number	Percent	Number	Percent	Number	Percent
2	0.20	156	15.69	171	17.20	290	29.18	149	14.99	134	13.48	92	9.26

Note: Total fetal deaths in 1997 = 994

Fetal deaths are those occurring during 20 weeks or more gestational period.

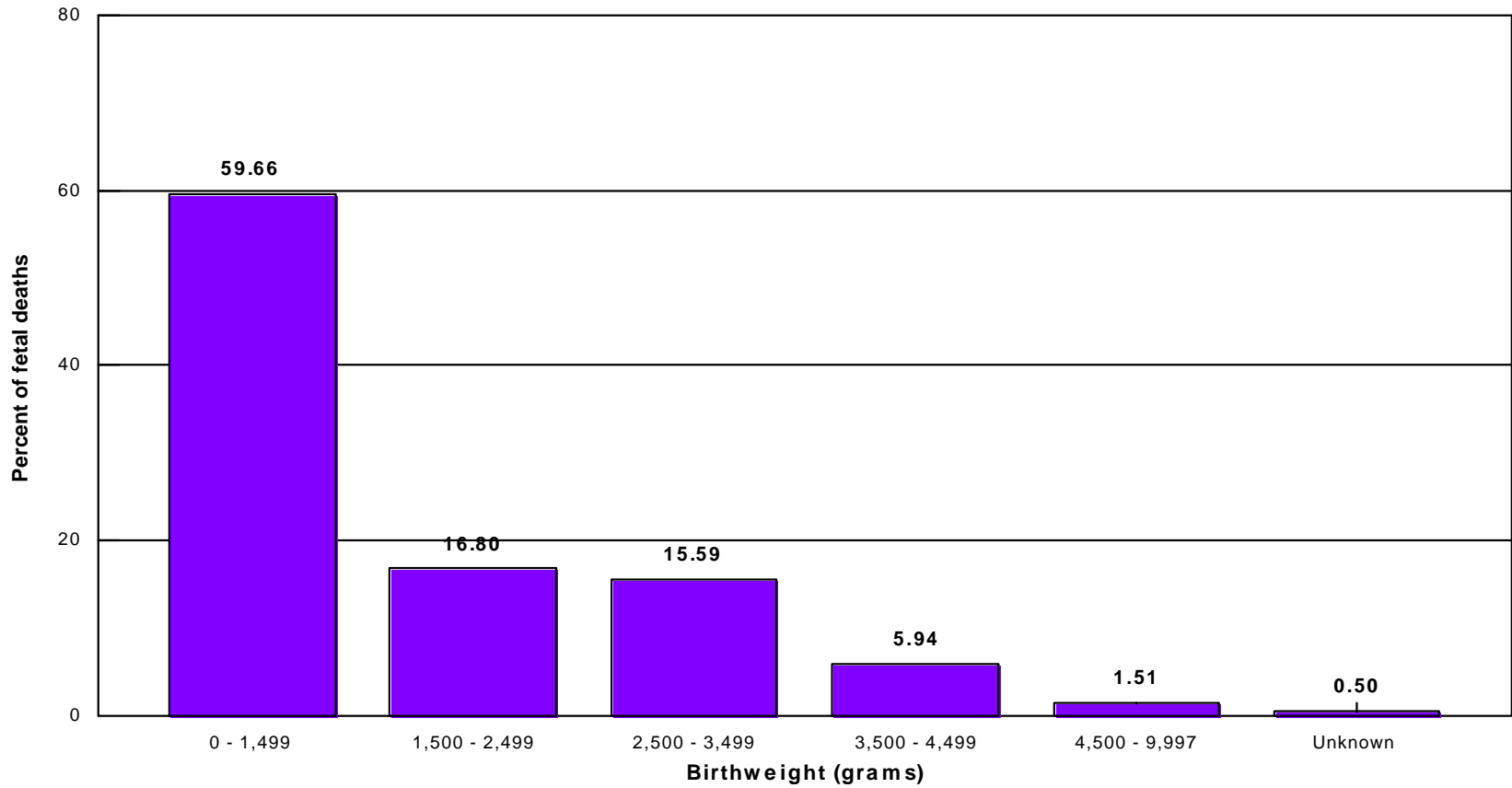
Year '17' = mothers who attained college degree or above

This analysis did not adjust for teen mothers who may not be old enough to have reached higher categorical education level.

Source: 1997 fetal death records from the California Department of Health Services, Center for Health Statistics

Percent of Fetal Deaths by Birthweight Category

Los Angeles County, 1997



Birthweight (grams)											
0 - 1,499		1,500 - 2,499		2,500 - 3,499		3,500 - 4,499		4,500 - 9,997		Unknown	
Number	Percent	Number	Percent	Number	Percent	Number	Percent	Number	Percent	Number	Percent
593	59.66	167	16.80	155	15.59	59	5.94	15	1.51	5	0.50

Note: Total fetal deaths in 1997 = 994

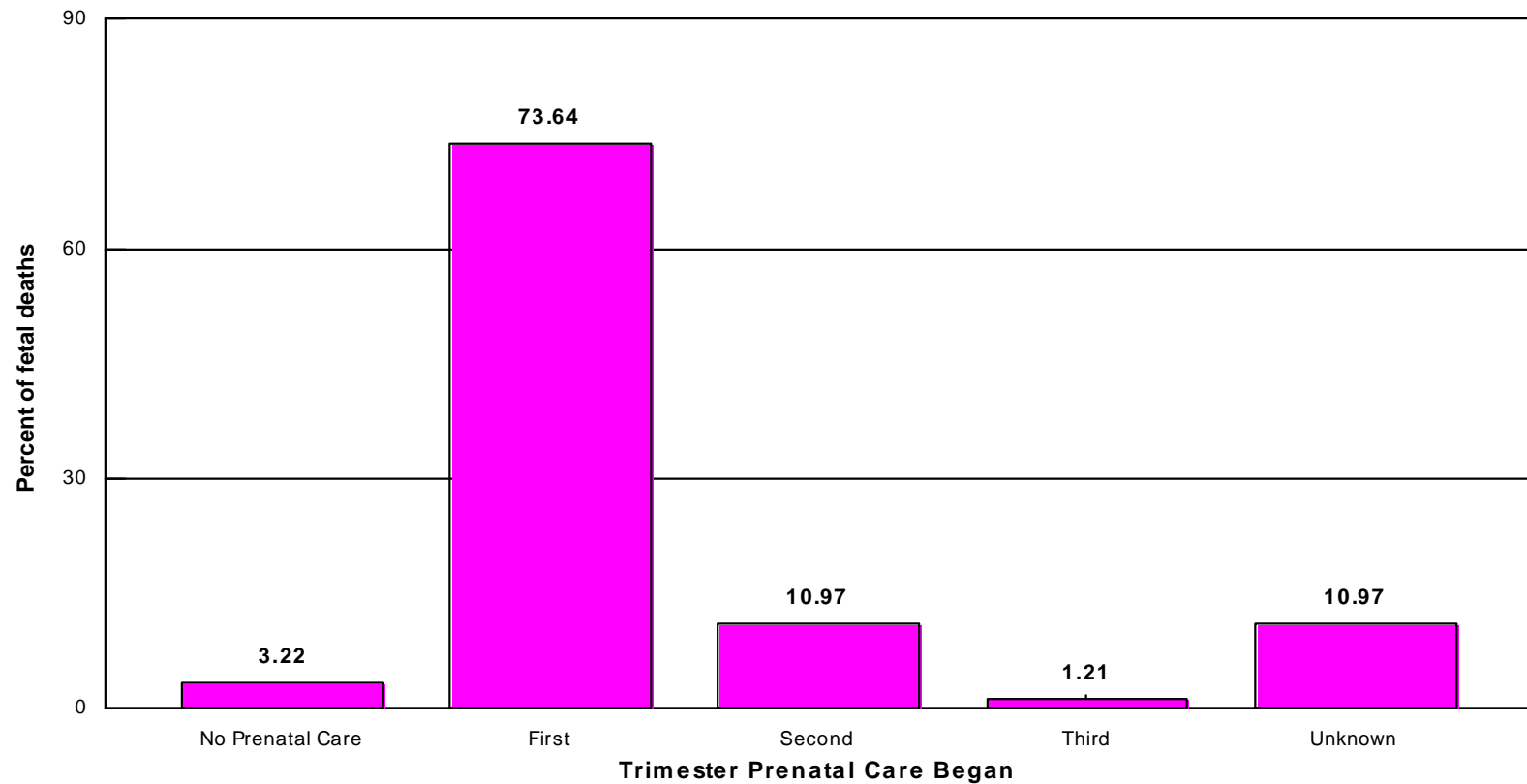
Fetal deaths are those occurring during 20 weeks or more gestational period.

Source: 1997 fetal death records from the California Department of Health Services, Center for Health Statistics



Percent of Fetal Deaths by Mother's Trimester Prenatal Care Began

Los Angeles County, 1997

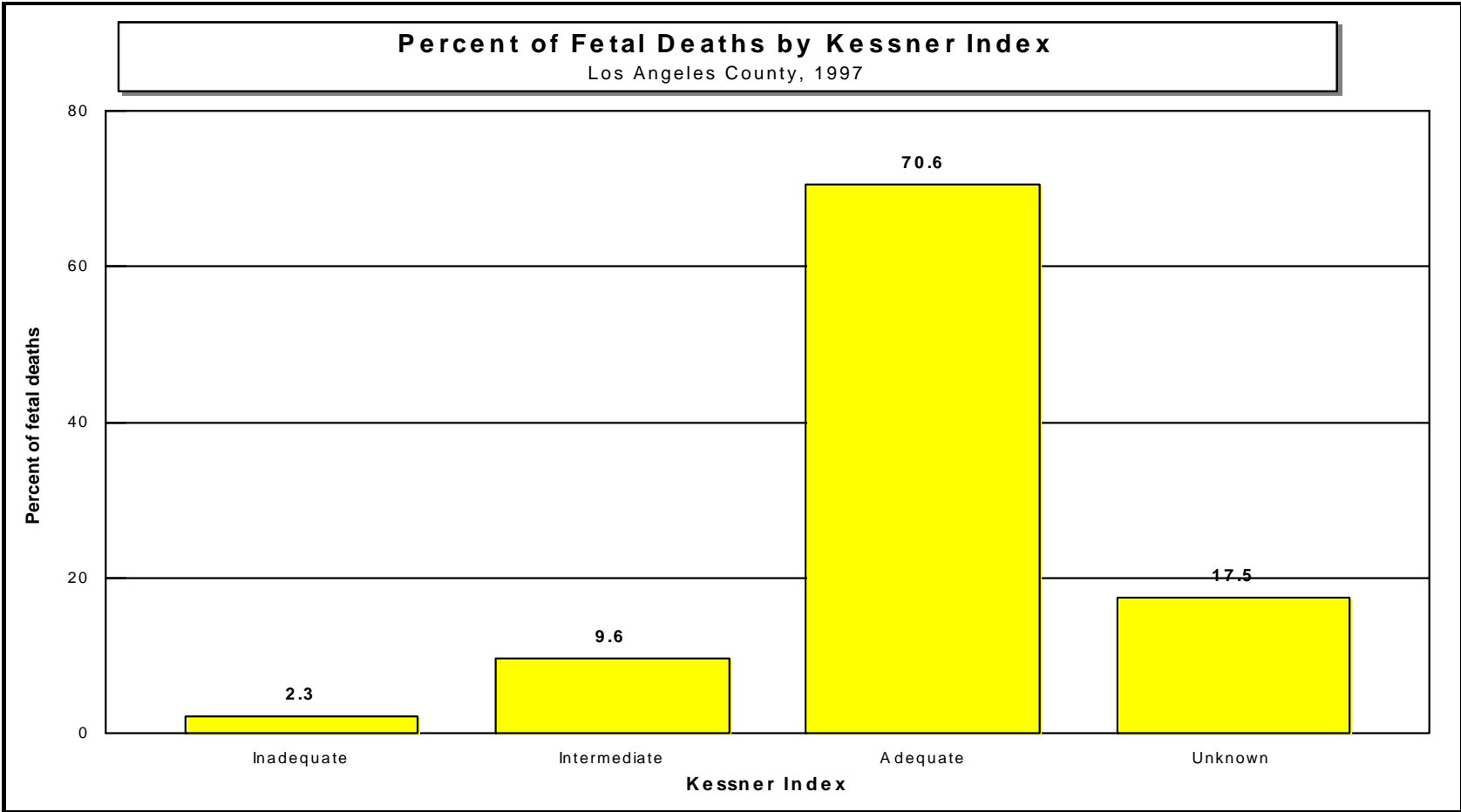


Trimester Prenatal Care Began									
No Prenatal Care		First		Second		Third		Unknown	
Number	Percent	Number	Percent	Number	Percent	Number	Percent	Number	Percent
32	3.22	732	73.64	109	10.97	12	1.21	109	10.97

Note: Total fetal deaths in 1997 = 994

Fetal deaths are those occurring during 20 weeks or more gestational period.

Source: 1997 fetal death records from the California Department of Health Services, Center for Health Statistics



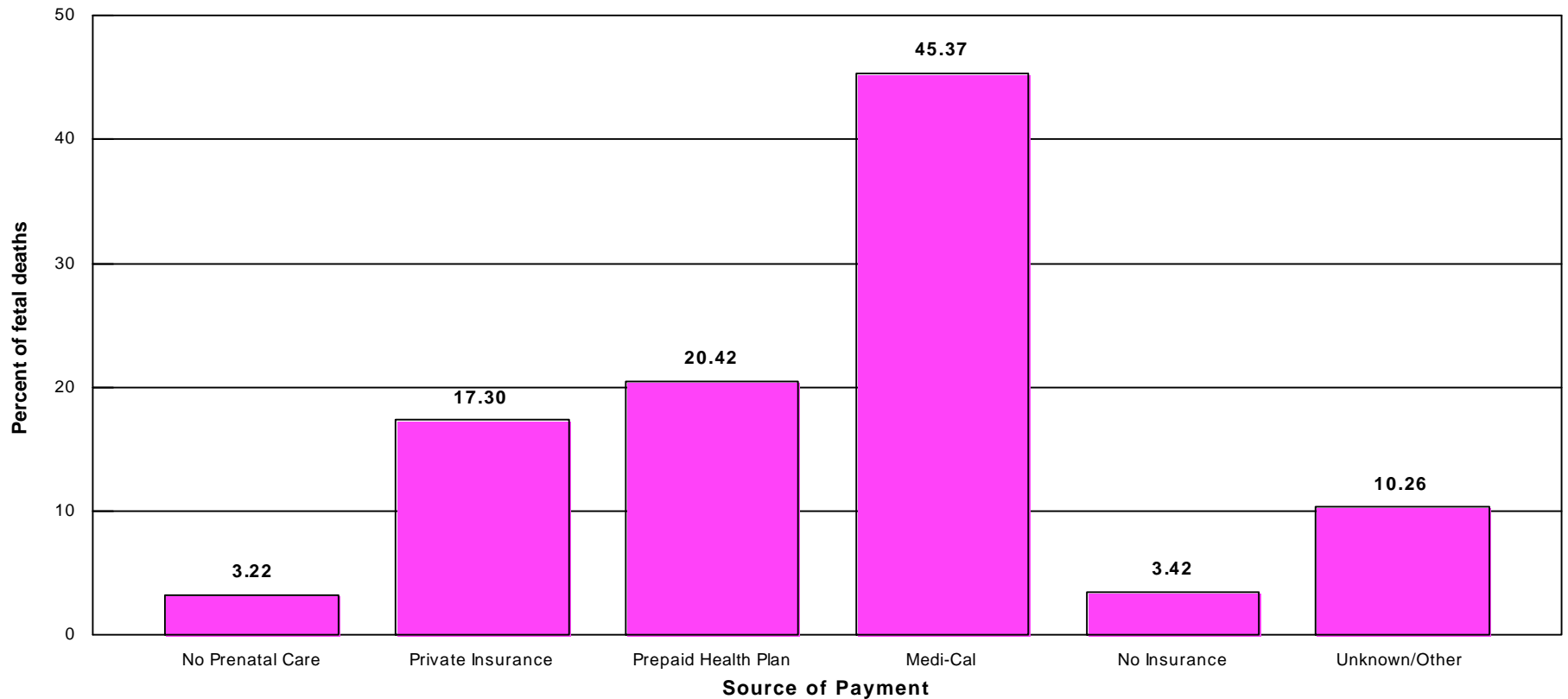
Kessner Index							
Inadequate		Intermediate		Adequate		Unknown	
Number	Percent	Number	Percent	Number	Percent	Number	Percent
23	2.3	95	9.6	702	70.6	174	17.5

Note: Total fetal deaths in 1997 = 994
 Fetal deaths are those occurring during 20 weeks or more gestational period.
 The Kessner Index takes into account three factors: month in which prenatal care began, number of prenatal visits, and length of gestation. This measure excludes the prenatal care experiences of all women whose pregnancies did not result in a live birth.
 Source: 1997 fetal death records from the California Department of Health Services, Center for Health Statistics



Percent of Fetal Deaths by Source of Payment for Prenatal Care

Los Angeles County, 1997



No Prenatal Care		Private Insurance		Prepaid Health Plan		Medi-Cal		No Insurance		Unknown/Other	
Number	Percent	Number	Percent	Number	Percent	Number	Percent	Number	Percent	Number	Percent
32	3.22	172	17.30	203	20.42	451	45.37	34	3.42	102	10.26

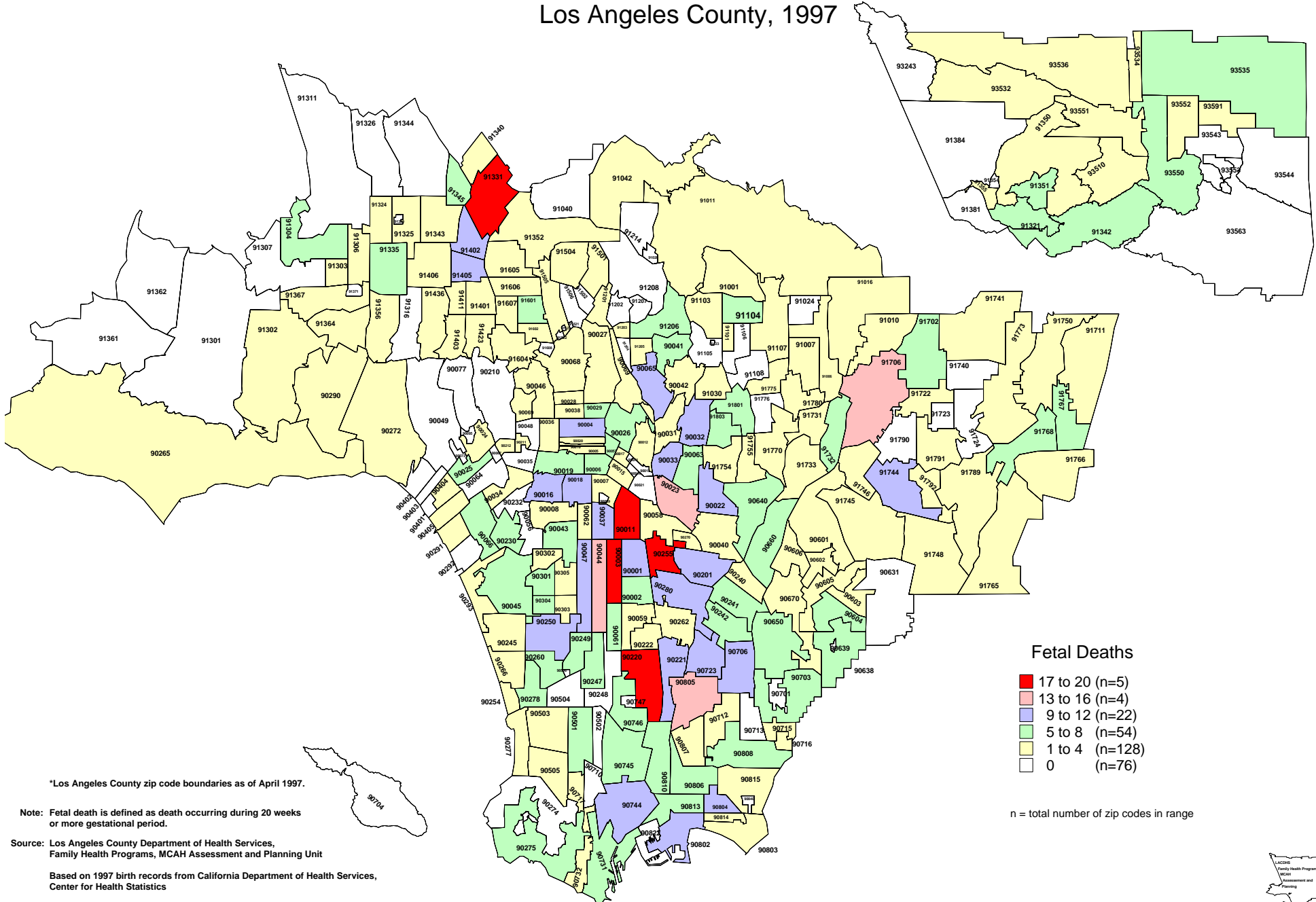
Note: Total fetal deaths in 1997 = 994

Fetal deaths are those occurring during 20 weeks or more gestational period.

Source: 1997 fetal death records from the California Department of Health Services, Center for Health Statistics

Number of Fetal Deaths by Zip Code*

Los Angeles County, 1997



*Los Angeles County zip code boundaries as of April 1997.

Note: Fetal death is defined as death occurring during 20 weeks or more gestational period.

Source: Los Angeles County Department of Health Services, Family Health Programs, MCAH Assessment and Planning Unit

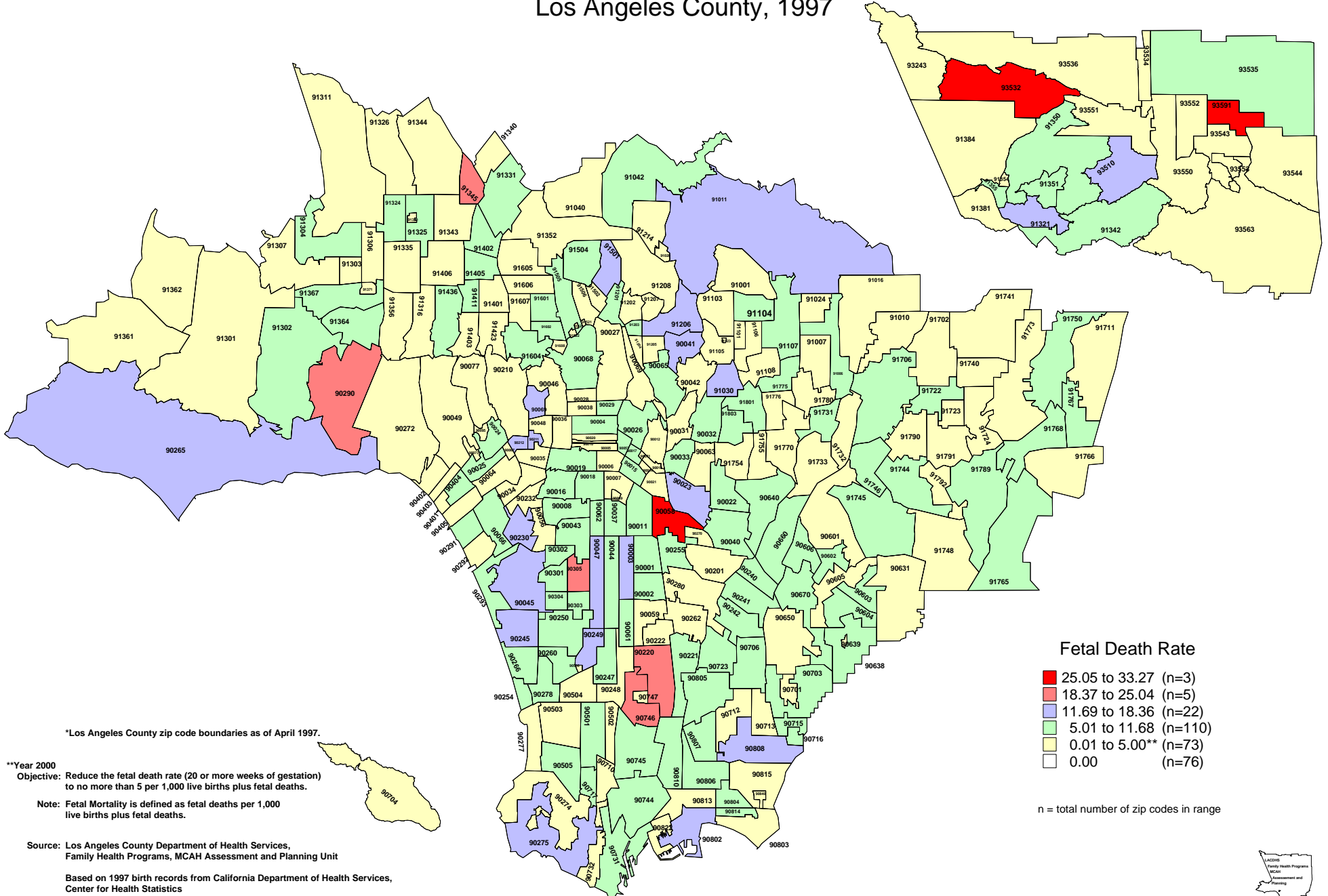
Based on 1997 birth records from California Department of Health Services, Center for Health Statistics

Map is not drawn to scale.



Fetal Mortality Rate by Zip Code*

Los Angeles County, 1997



Fetal Death Rate

- 25.05 to 33.27 (n=3)
- 18.37 to 25.04 (n=5)
- 11.69 to 18.36 (n=22)
- 5.01 to 11.68 (n=110)
- 0.01 to 5.00** (n=73)
- 0.00 (n=76)

n = total number of zip codes in range

*Los Angeles County zip code boundaries as of April 1997.

**Year 2000

Objective: Reduce the fetal death rate (20 or more weeks of gestation) to no more than 5 per 1,000 live births plus fetal deaths.

Note: Fetal Mortality is defined as fetal deaths per 1,000 live births plus fetal deaths.

Source: Los Angeles County Department of Health Services, Family Health Programs, MCAH Assessment and Planning Unit

Based on 1997 birth records from California Department of Health Services, Center for Health Statistics

Map is not drawn to scale.

