

# The Los Angeles Mommy & Baby Project

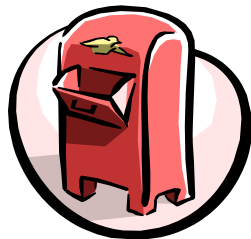


## What is the Project?

The LAMB (Los Angeles Mommy and Baby) Project is a survey that asks moms who recently had babies about their experiences before, during, and after their pregnancy. The Los Angeles County Department of Health Services is sponsoring this survey to better understand why some babies are born too early or too small. Babies born too early or too small can have serious health problems.

New moms are randomly selected to participate.

IF YOU GET THE SURVEY, PLEASE FILL IT OUT AND MAIL IT BACK, OR YOU CAN CALL (866) 706-LAMB TO DO THE SURVEY BY PHONE.

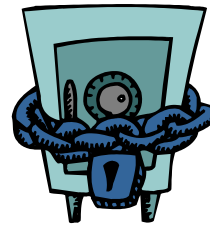


## Frequently Asked Questions



### *Will my answers be kept private?*

Yes—all answers are kept completely private. No woman will be identified by name.



### *Can I take the survey in another language?*

Written copies of the survey are available in Spanish and Chinese, in addition to English. Interviews in other languages can be conducted over the telephone. If you speak another language and would like to complete the survey, please call us at **(866) 706-LAMB**.

### *What if I need help or have questions?*

We're happy to help and answer your questions. Call us at (866) 706-LAMB.



## What have women said about LAMB?

*"I hope that my information will be helpful to all of the new mothers. Thanks."*

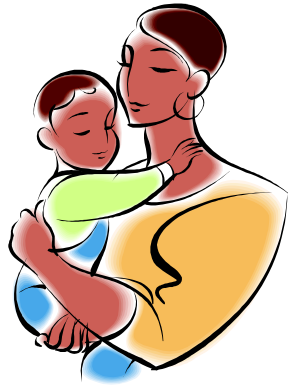
*"Thank you. This was fun!! I'm glad to be of help to future moms. :) My pride and joy 9lbs. 14 oz."*

*"... I am very happy that we're being taken into account, [and you are] making it easier for us by providing materials in our language. Thank you for caring about...women... who do not dare to communicate their family problems."*

## How Will We Thank You for Participating?

As our way of saying THANK YOU, women that fill out the survey will receive a gift card from a local grocery store, and will be entered into a drawing for additional prizes.





Los Angeles Mommy and Baby Project  
Los Angeles County Department of Health Services  
Maternal, Child, and Adolescent Health Programs

600 S. Commonwealth Ave., Suite 800  
Los Angeles, CA 90005

(866) 706-LAMB  
(866) 706-5262

[www.lapublichealth.org/mch/LAMB/LAMB.htm](http://www.lapublichealth.org/mch/LAMB/LAMB.htm)

**WE NEED YOUR HELP**  
To improve the health of infants

**Los Angeles Mommy & Baby Project**

**PLEASE FILL OUT YOUR LAMB SURVEY IF YOU RECEIVE IT!**

Filling out the survey will give us valuable information to help babies to be born and stay healthy.



We encourage you to share this brochure with health care providers and others who are interested in participating in this survey.

Funding for the printing of this 2005 brochure was made possible by the State of California Department of Health Services Maternal Child and Adolescent Health Branch through the Los Angeles County Department of Health Services.