

L. A. HOPE



What is the Project?

L. A. HOPE (Los Angeles Health Overview of a Pregnancy Event) is a survey sponsored by the Los Angeles County Department of Public Health. We are asking women who have suffered a fetal or infant loss to answer questions about their life before, during, and after the affected pregnancy.

Why is the Project Being Done?

Sadly, there are many unexplained infant and fetal deaths in Los Angeles County. The goal of the L. A. HOPE Project is to identify causes of these deaths. We hope to explore the range of grief support services offered to families following a loss. We aim to learn what is important to make mothers and babies healthier and to improve grief and bereavement services. L. A. HOPE will provide us with a clearer understanding of a mother's pregnancy experiences when fetal loss or infant death occurs.

Frequently Asked Questions



Will women's answers be kept private?

Yes—all answers are kept completely private to the extent permitted by law. We will not ask women for their names, the name of their doctors, or the names of their hospitals.

Is the survey available in multiple languages?

Written copies of the survey are available in English and Spanish. Interviews in other languages can be taken over the telephone.

How do we thank women for participating?

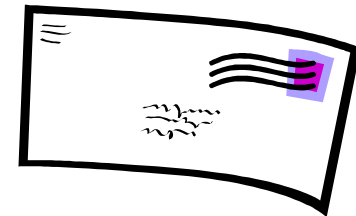
As our way of saying thank you and expressing our sympathy, women that are sent the survey also receive a \$20.00 gift certificate from a local grocery store.

What if families need help, have questions, or need grief and bereavement resources?

Families may call us at (213) 639-6470. We also have a list of grief and bereavement resources on our website.

Current Actions

The L. A. Hope Project is now being conducted countywide. We mail surveys to women in Los Angeles County through a random sampling scheme stratified by Service Planning Area. Initial results from the pilot and first two years of the project are available by request at (213) 639-6470 or online at www.lapublichealth.org/mch/lahope/lahope.html.



Next Steps

One of our main goals is to find possible gaps in services, which may be open to community or governmental action. We will present the results to local officials and community groups to guide program planning and policy development.

L. A. HOPE Project
Los Angeles County Department of Public Health
Maternal, Child & Adolescent Health Programs

**600 S. Commonwealth Ave, Suite 800
Los Angeles, CA 90005**

(213) 639-6470

Lapublichealth.org/mch/LAHOPE/LAHOPE.html



**PLEASE ENCOURAGE YOUR
PATIENTS AND CLIENTS TO FILL
OUT THE L. A. HOPE SURVEY IF
THEY RECEIVE IT**

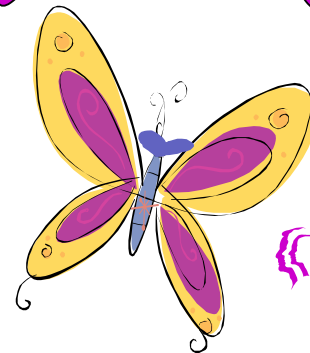
**The survey will give us valuable
information to help improve the health
of mothers and babies.**

We encourage you to share this brochure with health care providers and others who are interested in supporting this survey.

Funding for the printing of this brochure was made possible by the State of California Department of Health Services Maternal Child and Adolescent Health Branch through the Los Angeles County Department of Public Health.

Los Angeles Health Overview of a Pregnancy Event

L. A. HOPE



COUNTY OF LOS ANGELES
Public Health

Maternal, Child & Adolescent Health Programs