

Warning!

These snacks and candies have been found to contain lead¹

Last Updated: April 7, 2016²



"Toxic Waste" brand "Nuclear Sludge Bar" (various flavors)³ from Pakistan
Recalled: 1/14/11



Santra Goli
Recalled: 1/28/11



Khati Mithi Goli
Recalled: 1/28/11



Sugar Rewari
Recalled: 6/30/11



Mix Goli
Recalled: 12/1/11



Hans Brand from India
Santra Candy
Recalled: 3/24/11



Sugar Rewari
Recalled: 11/17/11



Jyoti Indian Sweets
Bonbons Indiens
Sugar Rewdi
Recalled: 11/17/11



Punjab Bazaar from India
Rewari Gur Jaggery
Recalled: 11/17/11



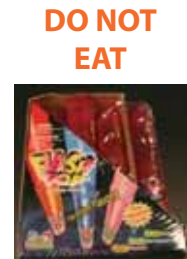
Sweet Rewdi
Recalled: 11/17/11



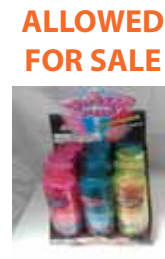
Roopal Swad Candy
from India
Recalled: 11/18/11



Bee Brand
Sunny Day Gummies
Recalled: 12/1/11



Flash Pop Candy
by Kidsmania⁴



Laxmi Brand Rewadi
(Jaggery) from India
Recalled: 2/16/12



Rewari Gur-Flat
(Jaggery Candy)
Recalled: 2/16/12



Rewari Gur-Coin
(Jaggery Candy)
Recalled: 2/23/12



Rewari Sugar-Coin
Candy
Recalled: 2/23/12



Rewari Sugar-Flat
Candy
Recalled: 2/23/12



Rewari Sugar-Round
Candy
Recalled: 2/23/12



Chef's Pride Rewadi Candy
from Pakistan
Recalled: 3/5/12



Shah's Deer Brand from India
Revdi (Gud)
(Sesame Candy)
Recalled: 3/5/12



Revdi (Gud)
(Sesame Candy)
Recalled: 3/5/12



Vagabundo Paletas
from Mexico
Recalled: 3/30/12



Gold Plum Candy
from Taiwan
Recalled: 7/20/12



World's Sour Dudes
Sour Strawberry Strawz
Recalled: 8/27/12



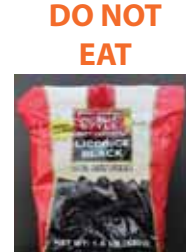
Red Lantern Plum Candy
from China
Recalled: 10/16/12



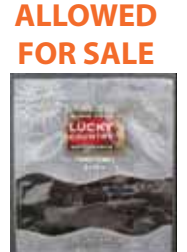
Chan Pui Mui
Preserved Plum
from Hong Kong
Recalled: 10/16/12



Sanh Yuan
Preserved Plum
from Taiwan
Recalled: 10/16/12



Aussie-Style Lucky Country
Soft Licorice
'Traditional Black' 98% Fat Free⁵



Dried Plum
from Hong Kong
Recalled: 11/5/12



Sweet & Soure Prune
from Taiwan
Recalled: 11/5/12



Ching Ling Dried Prune
from Taiwan
Recalled: 11/5/12



Preserved Plum
from China
Recalled: 11/5/12



Dried Red Prune
from Taiwan
Recalled: 11/5/12



Tama Roca Banderilla⁶
Lot code 13YMMDD is Allowed for Sale.
Do not eat candy with lot code
before 13YMMDD.



Ginger Candy
from Vietnam
Recalled: 8/5/13



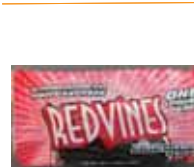
Rewari Sugar
Recalled: 9/13/13



Rewari Gur
Recalled: 10/7/13



Sesame Candies
Recalled: 10/7/13



Red Vines Black Licorice⁷
Candy with 'Best Before Date' of 070513 or Greater is Allowed for Sale.
Do not eat candy with 'Best Before Date' of 020413.

For questions or more information, please contact the Los Angeles County Department of Public Health:



Childhood Lead Poisoning Prevention Program: 1-800-LA-4-LEAD (1-800-524-5323)

For complaints or questions about recalled candies, please contact the California Department of Public Health:



Food and Drug Branch (FDB): 1-800-495-3232 (Complaint Hotline) or 1-916-650-6500 (Questions/Complaints on Lead in Candy)
For the most up to date information visit the FDB Website: <http://www.cdph.ca.gov/data/Documents/fdbLiLiC07.pdf>

¹ The California Department of Public Health, Food and Drug Branch has issued a Health Alert for the candies shown on this flyer. These candies have been found to have lead levels in excess of the allowable level (0.10ppm).

² THE INFORMATION CONTAINED IN THIS DOCUMENT IS SUBJECT TO FREQUENT CHANGE WITHOUT PRIOR NOTICE. This information is effective and accurate only as of the "Last Updated" date at the top of the page, and is only valid until next updated. Some manufacturers may have made changes to their production process and/or ingredients so the results reported above may not accurately reflect the lead levels, if any, in these products currently on the market. Data presented in this document is for information purposes only, does not include all candies, and represents lead levels only in the candy samples tested by the CA FDB since January 2011.

³ Extended recall only applies to the Nuclear Sludge candies and not to other 'Toxic Waste' Brand candies.

⁴ Effective 12/28/2011 - This candy bearing lot code of '110201' or greater (for example 110330, 120409, etc.) is allowed for sale in California.

⁵ Effective 10/17/2011 - This candy in a new 'Gray' package is allowed for sale in California.

⁶ Effective 05/23/2013 - This candy can be sold in California with a new lot code of 13YMMDD. Do not eat candy with lot code prior to 13YMMDD.

⁷ Effective 10/15/2013 - This candy bearing a 'Best Before Date' of 070513 or greater (for example 112213, 092014, etc.) is allowed for sale in California. Do not eat candy with 'Best Before Date' of 020413.