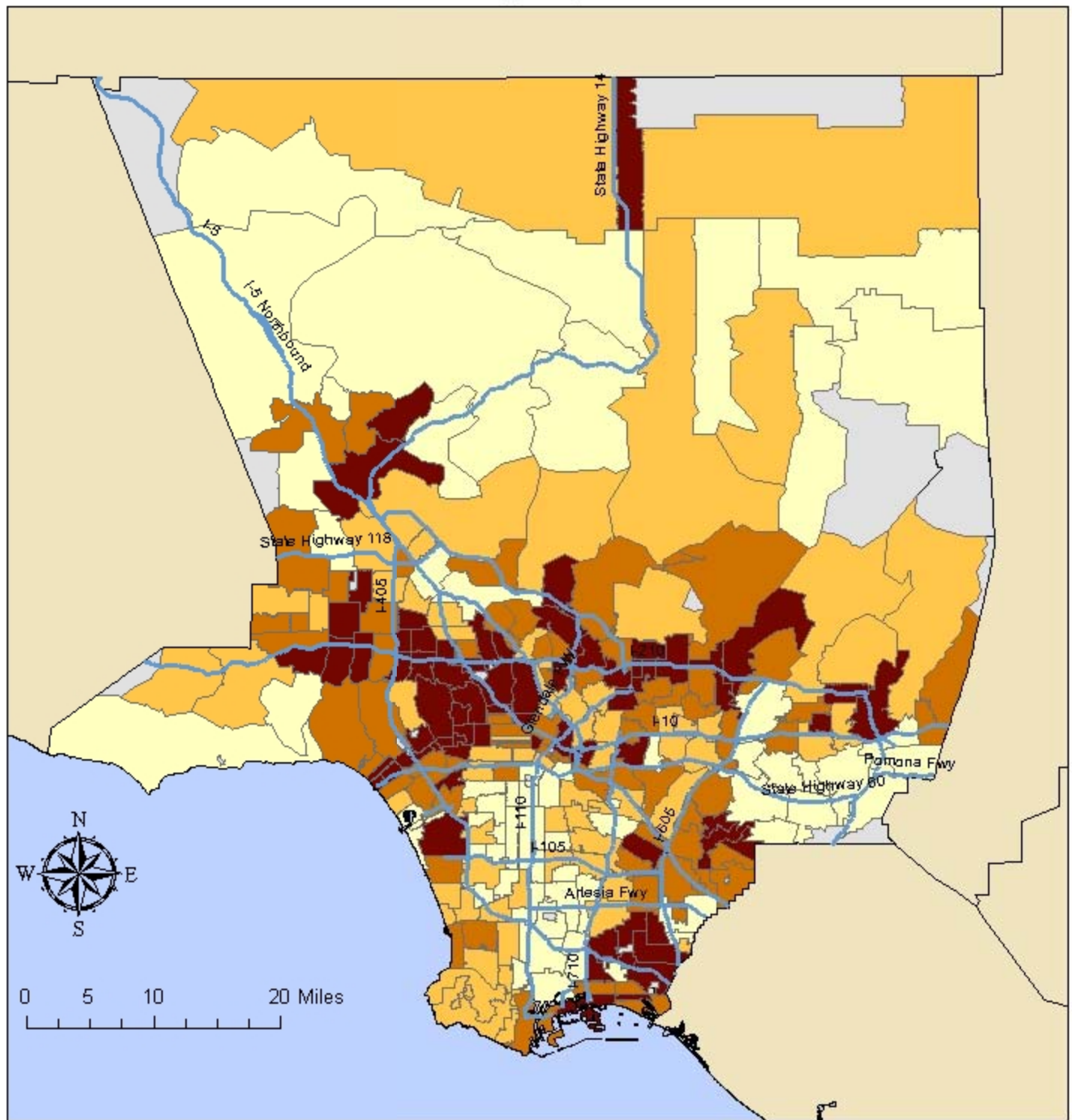


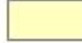




Unintentional Fall Hospitalization Rates per 100,000 for 65+ Year Olds by Zip Code, 2000-2010



Data Notes:

1. Hospitalization data from the Office of Statewide Health Planning and Development for zip codes, 2000-2010.
2. Population data from the 2010 US Census for Zip Code Tabulation Areas.
3. Census boundaries are not identical to zip code boundaries.
4. Rates were not calculated for zip codes shown in gray because data were not available (either a small number of hospitalizations or no census population data)

Fall Hospitalization Rate

	≤ 1372.2
	1372.3 - 1636.5
	1636.6 - 1919.9
	≥ 1920.0
	Data not shown