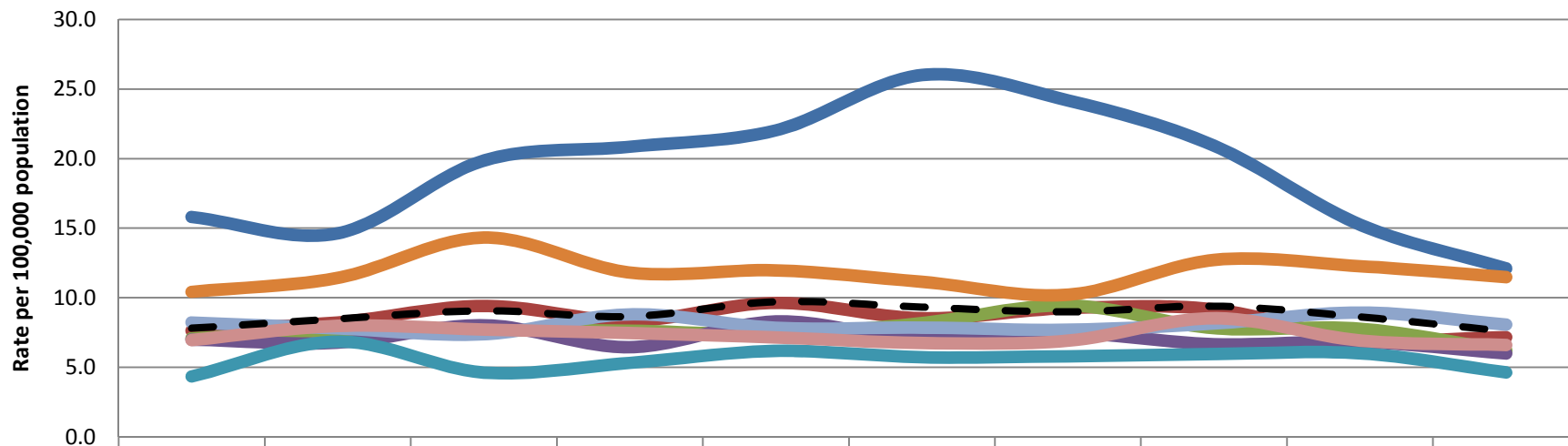


Rate of All Unintentional MV Traffic Deaths, by SPA of Residence and Year



	1999	2000	2001	2002	2003	2004	2005	2006	2007	2008
SPA 1	15.8	14.6	19.9	20.9	22.0	26.0	24.2	20.9	15.3	12.1
SPA 2	7.6	8.2	9.4	8.4	9.6	8.5	9.3	9.2	7.0	7.2
SPA 3	7.1	7.7	7.6	7.6	7.4	8.2	9.5	7.8	7.8	6.2
SPA 4	7.0	6.8	8.0	6.4	8.3	7.0	7.5	6.7	6.8	6.0
SPA 5	4.4	6.9	4.6	5.3	6.2	5.7	5.8	6.0	6.0	4.6
SPA 6	10.4	11.4	14.3	11.8	12.0	11.1	10.2	12.7	12.3	11.5
SPA 7	8.2	7.8	7.4	8.8	7.9	7.9	7.7	8.2	8.9	8.1
SPA 8	7.0	8.0	7.7	7.5	7.2	6.8	6.9	8.5	6.9	6.6
LAC Overall	7.8	8.5	9.1	8.7	9.7	9.3	9.0	9.4	8.6	7.6

— SPA 1
 — SPA 2
 — SPA 3
 — SPA 4
 — SPA 5
 — SPA 6
 — SPA 7
 — SPA 8
 - - LAC Overall

Suggested Citation: Los Angeles Department of Public Health, Injury & Violence Prevention Program (May 2011). Rate of All Unintentional MV Traffic Deaths, by SPA of Residence and Year [online data table] [cited Year Month (abbreviated) Day] from www.ph.lacounty.gov/ivpp

Data Sources: Death Statistical Master File, California Department of Health, Office of Vital Statistics
 Population Estimates & Predictions (PEPS) Data, Los Angeles County Office of Urban Research

Note: In some tables/charts values for some SPAs and years are suppressed because of small numbers.