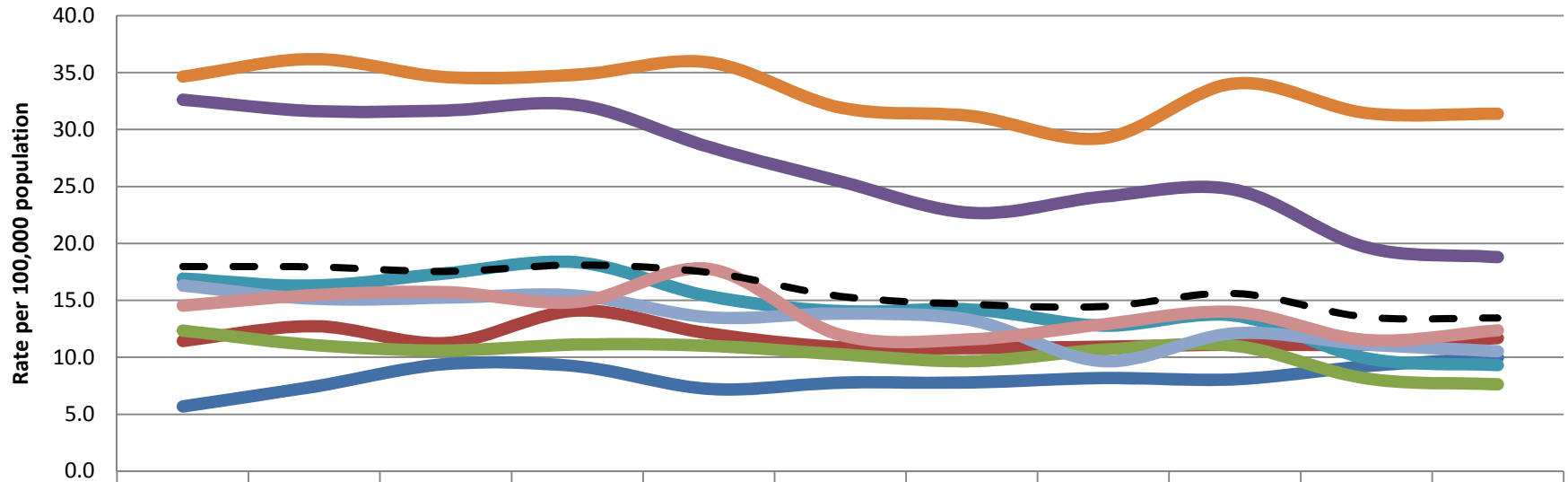


Rate of Non Fatal Hospitalizations for Unintentional MV Pedestrian Injuries, by SPA of Residence and Year



	1999	2000	2001	2002	2003	2004	2005	2006	2007	2008	2009
SPA 1	5.7	7.4	9.4	9.2	7.2	7.8	7.8	8.2	8.1	9.2	10.0
SPA 2	11.4	12.7	11.2	14.1	12.1	10.9	10.8	10.9	11.1	11.1	11.7
SPA 3	12.3	11.1	10.6	11.1	11.0	10.3	9.7	10.7	11.0	8.1	7.6
SPA 4	32.6	31.6	31.7	32.2	28.5	25.4	22.7	24.1	24.7	19.7	18.8
SPA 5	16.9	16.3	17.4	18.3	15.4	14.1	14.2	12.8	13.7	9.9	9.3
SPA 6	34.7	36.2	34.6	34.8	35.9	31.9	31.2	29.2	34.1	31.4	31.4
SPA 7	16.3	15.1	15.2	15.4	13.5	13.8	13.2	9.7	12.1	11.1	10.5
SPA 8	14.5	15.5	15.7	14.9	17.8	12.0	11.6	12.9	14.0	11.5	12.4
LAC Overall	18.0	17.9	17.5	18.1	17.4	15.4	14.7	14.5	15.6	13.5	13.5

— SPA 1
 — SPA 2
 — SPA 3
 — SPA 4
 — SPA 5
 — SPA 6
 — SPA 7
 — SPA 8
 - - - LAC Overall

Suggested Citation: Los Angeles Department of Public Health, Injury & Violence Prevention Program (May 2011). Rate of Non Fatal Hospitalizations for Unintentional MV Pedestrian Injuries, by SPA of Residence and Year [online data table]. [cited Year Month (abbreviated) Day] from www.ph.lacounty.gov/ivpp

Data Sources: Office of Statewide Health Planning and Development, Hospital Discharge Data
 Population Estimates & Predictions (PEPS) Data, Los Angeles County Office of Urban Research

Note: In some tables/charts values for some SPAs and years are suppressed because of small numbers.