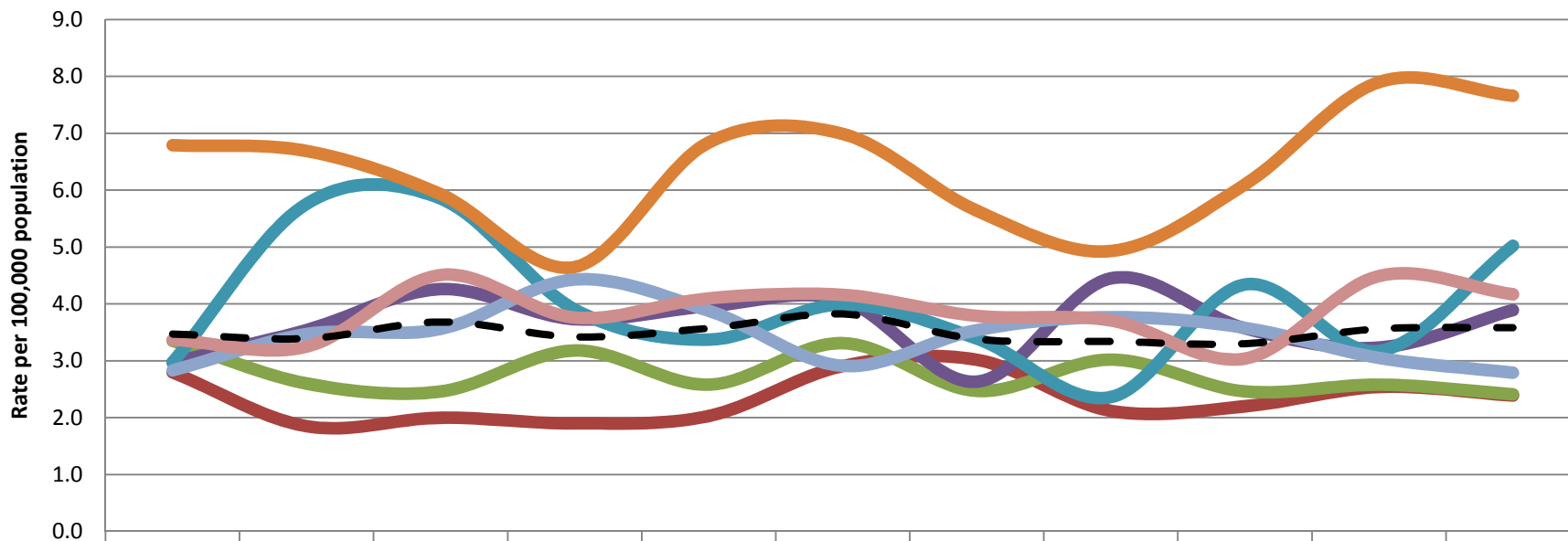


## Rate of Non Fatal Hospitalizations for Unintentional MV Bicyclist Injuries, by SPA of Residence and Year



	1999	2000	2001	2002	2003	2004	2005	2006	2007	2008	2009
SPA 2	2.8	1.9	2.0	1.9	2.0	2.9	3.0	2.1	2.2	2.5	2.4
SPA 3	3.4	2.6	2.5	3.2	2.6	3.3	2.5	3.0	2.5	2.6	2.4
SPA 4	3.0	3.5	4.3	3.7	4.0	4.1	2.6	4.5	3.6	3.2	3.9
SPA 5	3.0	5.8	5.9	3.9	3.4	4.0	3.4	2.4	4.3	3.2	5.0
SPA 6	6.8	6.7	5.9	4.7	6.8	7.0	5.6	4.9	6.1	7.9	7.7
SPA 7	2.8	3.5	3.6	4.4	3.9	2.9	3.5	3.8	3.6	3.1	2.8
SPA 8	3.4	3.3	4.5	3.8	4.1	4.2	3.8	3.7	3.0	4.5	4.2
LAC Overall	3.5	3.4	3.7	3.4	3.6	3.8	3.4	3.3	3.3	3.6	3.6

— SPA 2   
 — SPA 3   
 — SPA 4   
 — SPA 5   
 — SPA 6   
 — SPA 7   
 — SPA 8   
 - - - LAC Overall

Suggested Citation: Los Angeles Department of Public Health, Injury & Violence Prevention Program (May 2011). Rate of Non Fatal Hospitalizations for Unintentional MV Bicyclist Injuries, by SPA of Residence and Year [online data table]. [cited Year Month (abbreviated) Day] from [www.ph.lacounty.gov/ivpp](http://www.ph.lacounty.gov/ivpp)

Data Sources: Office of Statewide Health Planning and Development, Hospital Discharge Data

Population Estimates & Predictions (PEPS) Data, Los Angeles County Office of Urban Research

Note: In some tables/charts values for some SPAs and years are suppressed because of small numbers.