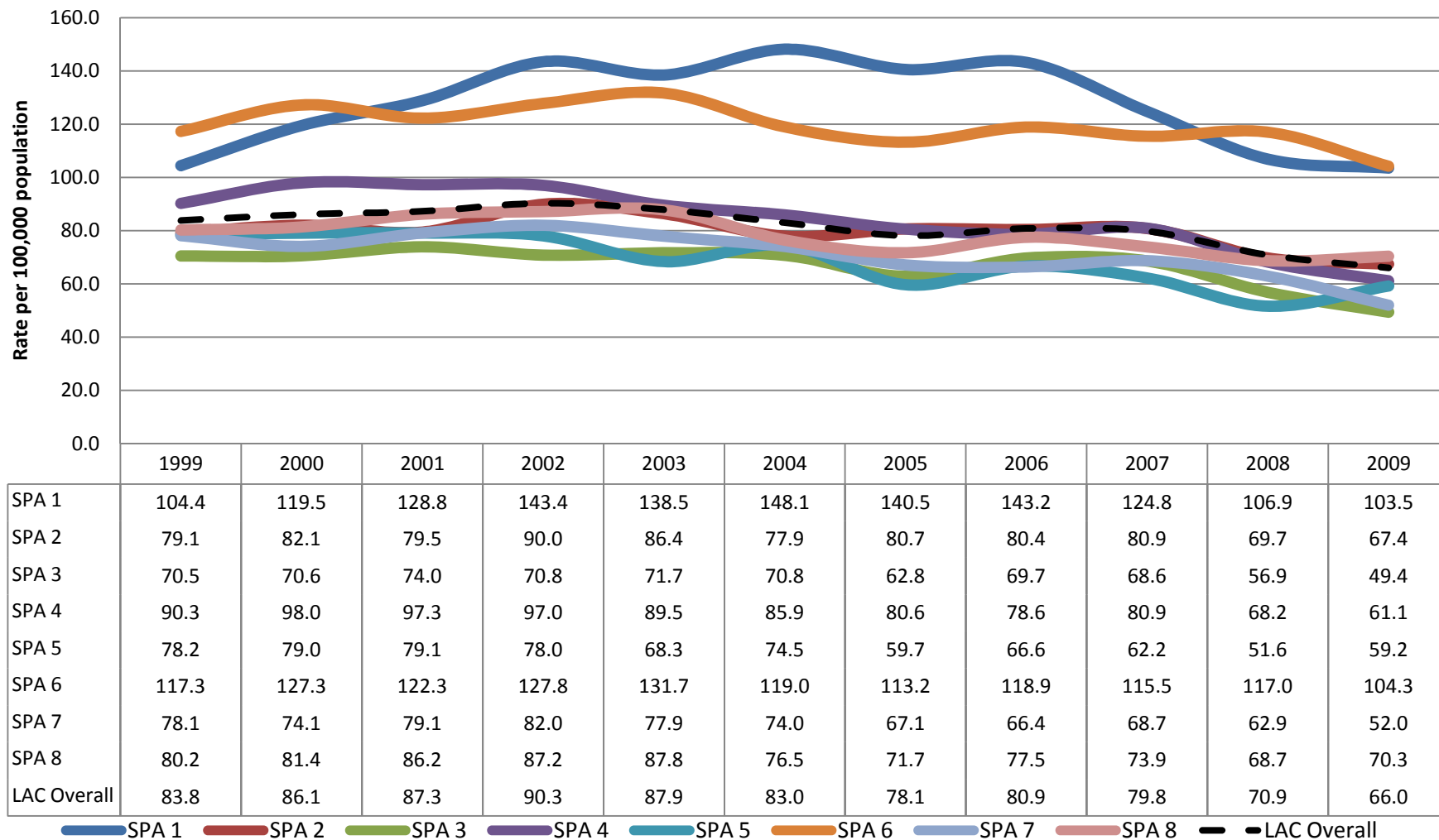


## Rate of Non Fatal Hospitalizations for All Unintentional MV Traffic Injuries, by SPA of Residence and Year



Suggested Citation: Los Angeles Department of Public Health, Injury & Violence Prevention Program (May 2011). Rate of Non Fatal Hospitalizations for All Unintentional MV Traffic Injuries, by SPA of Residence and Year [online data table]. [cited Year Month (abbreviated) Day] from [www.ph.lacounty.gov/ivpp](http://www.ph.lacounty.gov/ivpp)

Data Sources: Office of Statewide Health Planning and Development, Hospital Discharge Data  
Population Estimates & Predictions (PEPS) Data, Los Angeles County Office of Urban Research

Note: In some tables/charts values for some SPAs and years are suppressed because of small numbers.