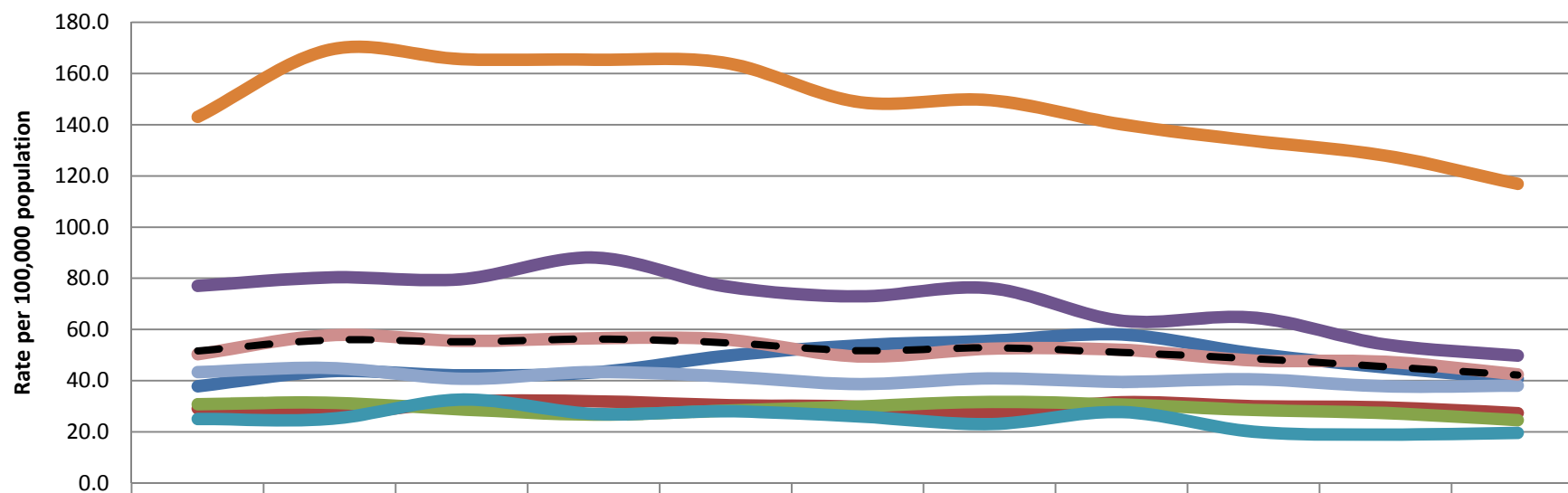


Rate of Non Fatal Hospitalizations for All Assault Injuries, by SPA of Residence and Year



	1999	2000	2001	2002	2003	2004	2005	2006	2007	2008	2009
SPA 1	37.8	43.7	42.1	43.2	49.7	53.8	55.6	58.1	50.6	45.2	40.8
SPA 2	29.1	27.0	31.7	31.9	30.5	29.8	27.7	31.5	30.0	29.6	27.4
SPA 3	30.8	31.4	28.8	26.8	28.4	29.9	31.7	30.7	28.6	27.4	24.6
SPA 4	77.1	80.4	79.7	88.2	76.9	73.0	76.2	63.4	64.7	54.2	49.8
SPA 5	25.0	25.1	32.7	27.0	28.1	26.1	23.0	27.8	20.0	18.9	19.5
SPA 6	143.1	169.3	165.6	165.4	164.2	149.0	149.6	140.2	133.7	128.0	116.9
SPA 7	43.4	44.9	40.7	43.4	41.6	38.7	40.9	39.6	40.5	37.8	38.1
SPA 8	50.3	57.8	55.5	56.6	56.1	49.5	52.5	52.1	47.9	47.4	42.4
LAC Overall	51.6	55.9	55.2	56.3	54.8	51.7	52.8	51.0	48.6	45.4	42.2

■ SPA 1
 ■ SPA 2
 ■ SPA 3
 ■ SPA 4
 ■ SPA 5
 ■ SPA 6
 ■ SPA 7
 ■ SPA 8
 ■ LAC Overall

Suggested Citation: Los Angeles Department of Public Health, Injury & Violence Prevention Program (May 2011). Rate of Non Fatal Hospitalizations for All Assault Injuries, by SPA of Residence and Year [online data table]. [cited Year Month (abbreviated) Day] from www.ph.lacounty.gov/ivpp

Data Sources: Office of Statewide Health Planning and Development, Hospital Discharge Data
 Population Estimates & Predictions (PEPS) Data, Los Angeles County Office of Urban Research

Note: In some tables/charts values for some SPAs and years are suppressed because of small numbers.