

Early Identification & Intervention: Connecting Data to Policy

Supplemental Slides

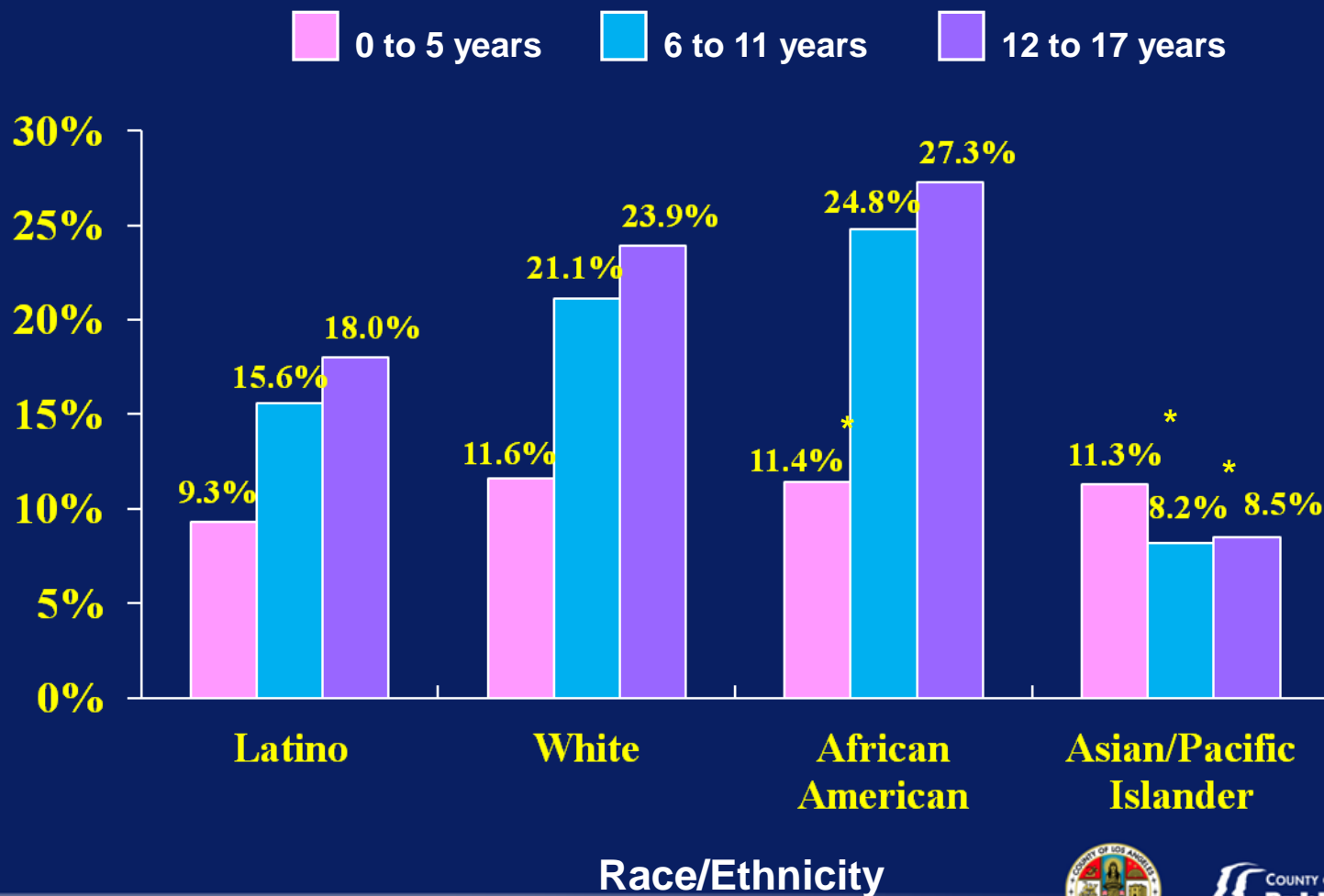
Susie Baldwin, MD, MPH

Office of Health Assessment & Epidemiology

Los Angeles County Department of Public Health



Percent of LA County Children (0-17 years old) with Special Health Care Needs, by Race/Ethnicity and Age Group (LACHS 2005)

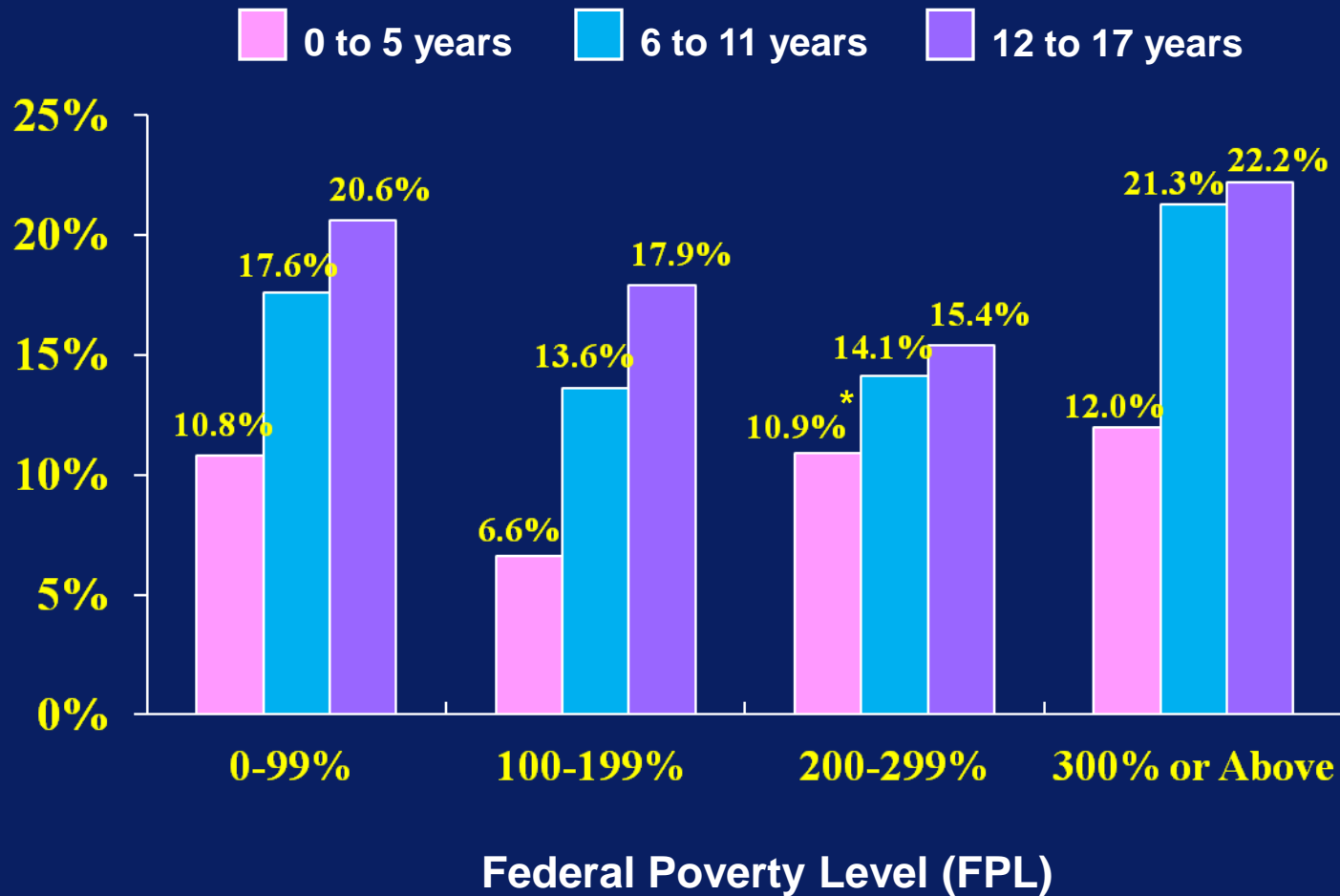


Race/Ethnicity



* The estimates are based on a small sample size and should be interpreted with caution.

Percent of LA County Children (0-17 years old) with Special Health Care Needs, by Federal Poverty Level (FPL)[†] and Age Group (LACHS 2005)

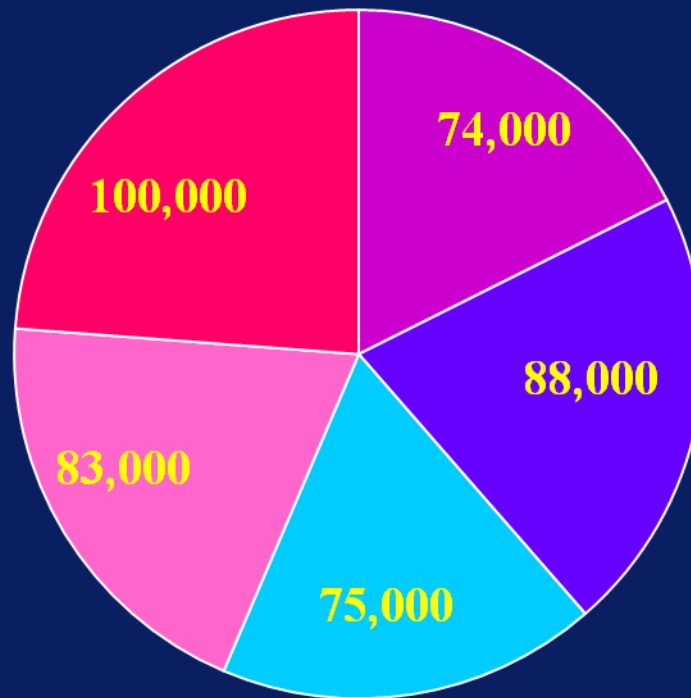


* The estimates are based on a small sample size

[†] Based on U.S. Census 2003 Federal Poverty Level (FPL) thresholds



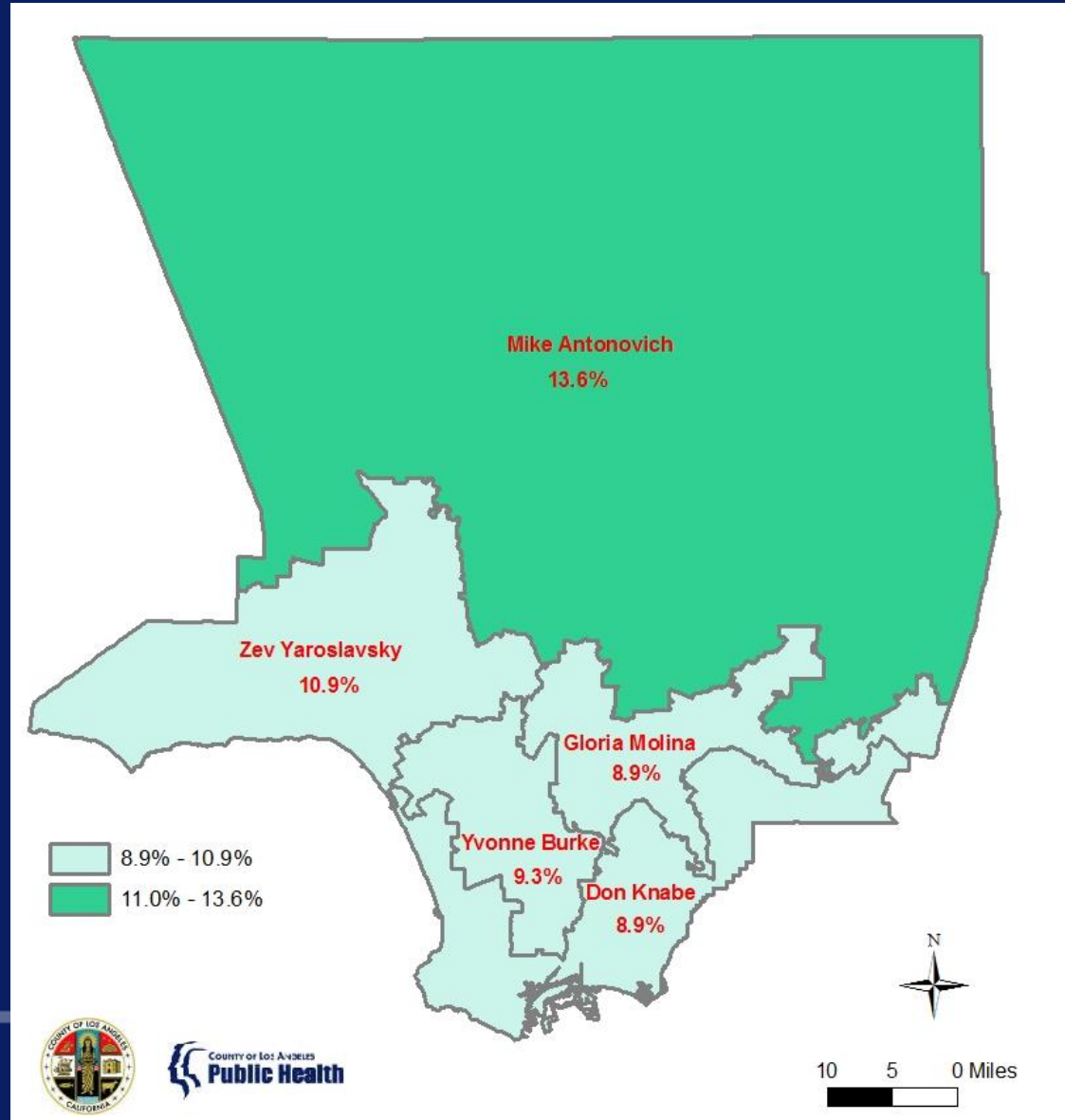
Estimated Numbers of Children (0-17 years old) with Special Health Care Needs, by Supervisorial District (LACHS 2005)



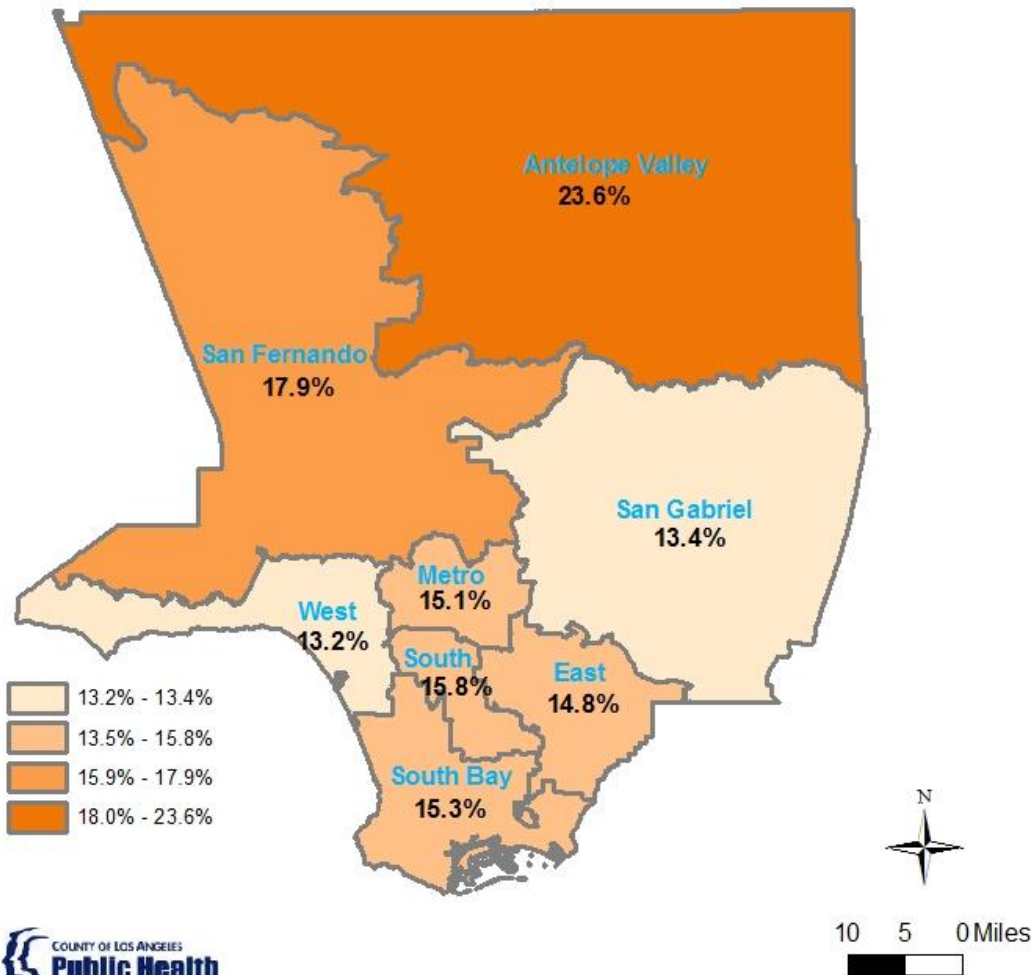
- Gloria Molina
- Mark Ridley Thomas
- Zev Yaroslavsky
- Don Knabe
- Mike Antonovich



Children (0-5) with Special Health Care Needs, by Supervisorial District (LACHS 2005)



Percent of Children (0-17 years old) Who Meet the Criteria for Special Health Care Needs by SPA

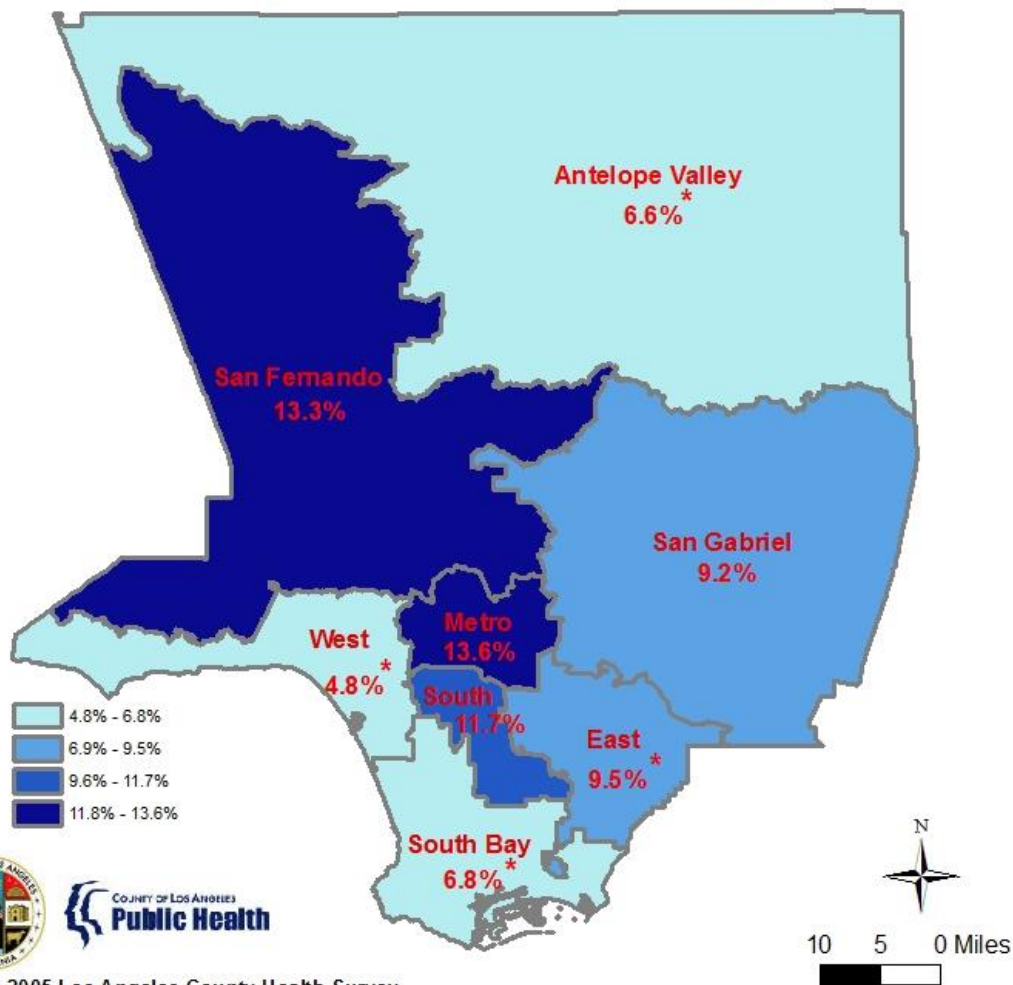


Source: 2005 Los Angeles County Health Survey

Prepared by Office of Health Assessment & Epidemiology,
January, 2012



Percent of Children (0-5 years old) Who Meet the Criteria for Special Health Care Needs by SPA



COUNTY OF LOS ANGELES
Public Health

Source: 2005 Los Angeles County Health Survey

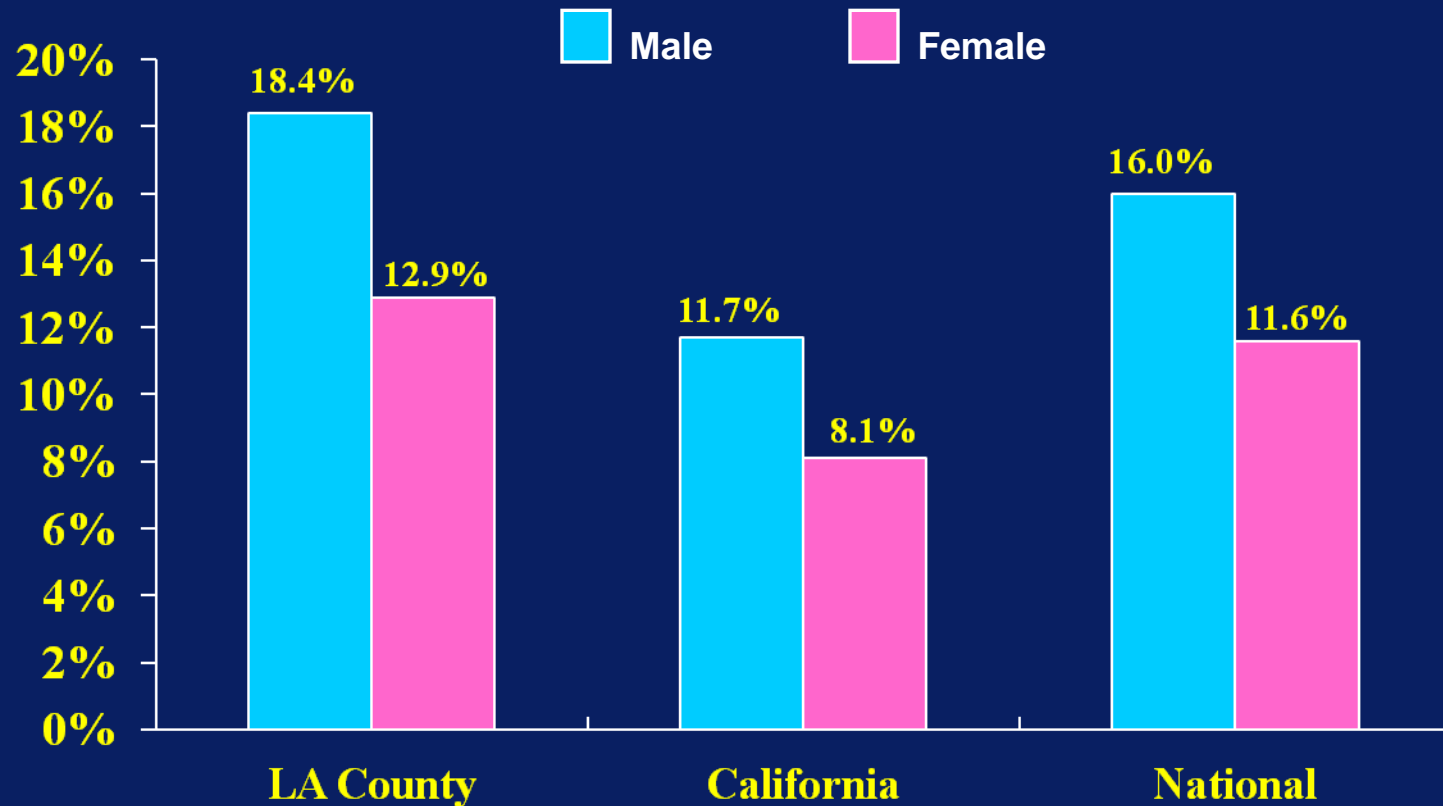
* Estimate is statistically unstable and should be viewed with caution.

Prepared by Office of Health Assessment & Epidemiology,
January, 2012



COUNTY OF LOS ANGELES
Public Health

LA County Children (0-17) with SHCN, by Gender (LACHS 2005) Compared with National Survey of CSHCN (2005/2006)

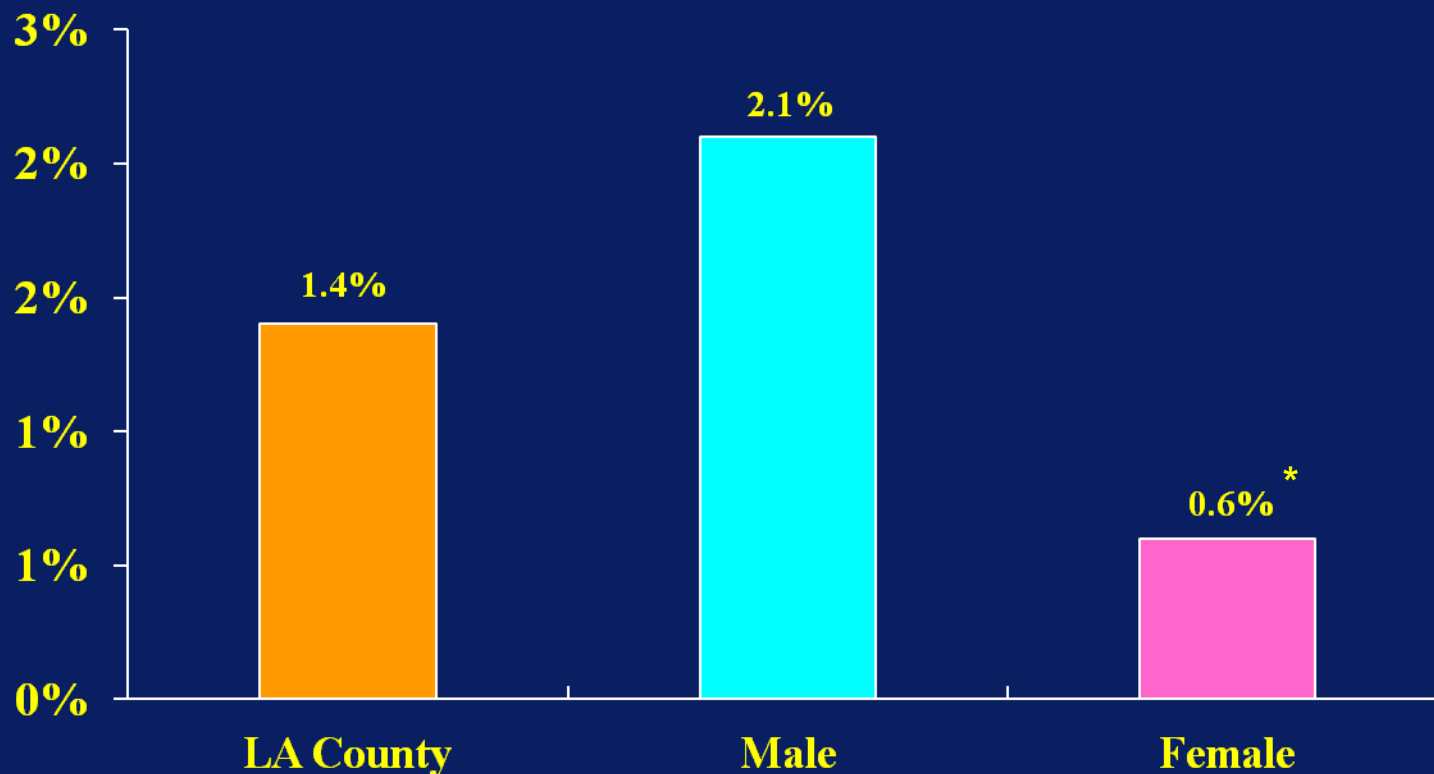


LA County Children (0-17) With Special Health Care Needs (LACHS 2005) Compared with National Survey of Children with Special Health Care Needs (2005/2006), by Race/Ethnicity

| | LA County | California | National |
|------------------------|-----------|------------|----------|
| Latino | 14.2% | 6.2% | 8.3% |
| White | 19.4% | 13.9% | 15.5% |
| African American | 22.4% | 15.1% | 15.0% |
| Asian/Pacific Islander | 9.4% | 5.6% | 6.3% |



Percent of LA County Children (0-17 years old) Ever Diagnosed with Autism, By Gender (LACHS 2007)



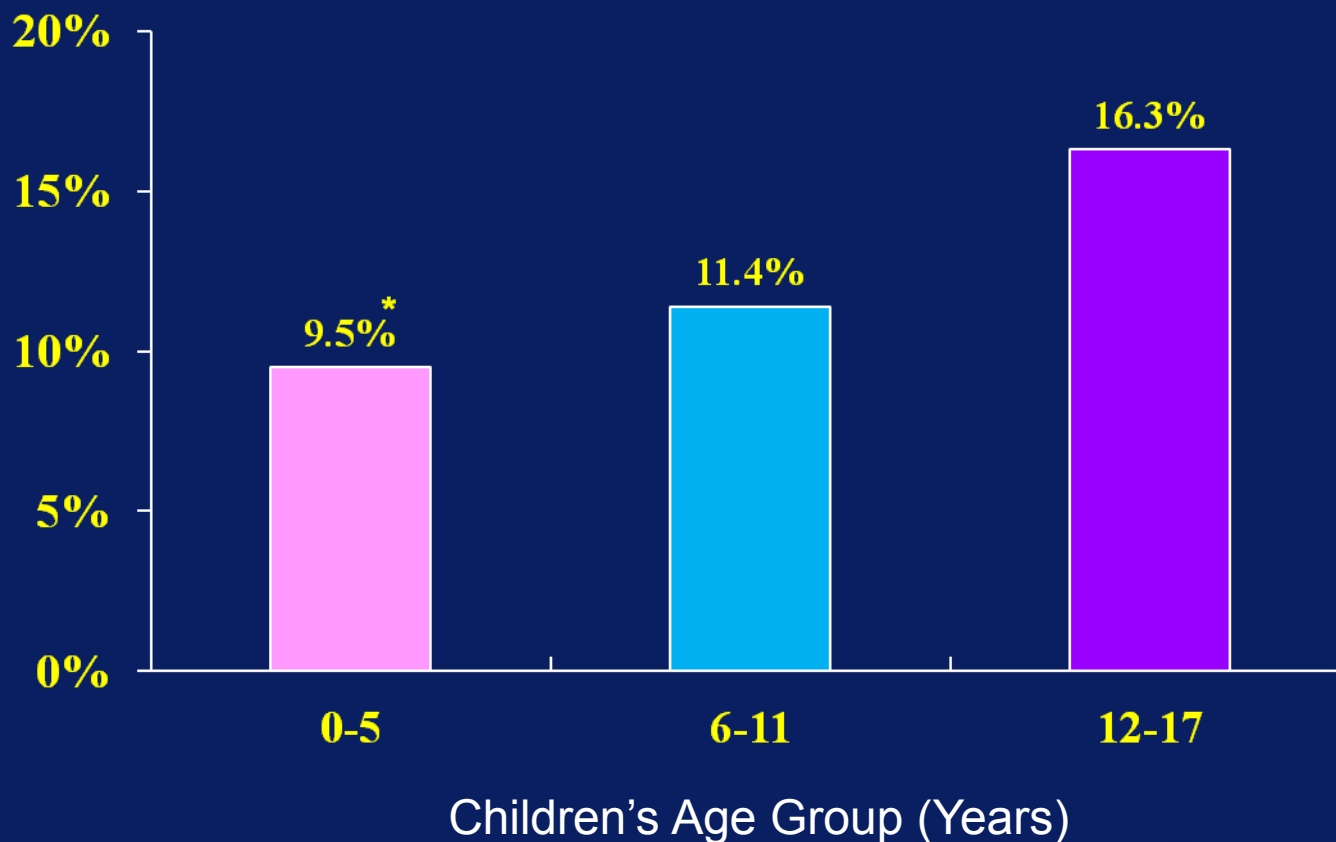
* The estimates are based on a small sample size and should be interpreted with caution.



Parental Risk Factors



LA County Parents of Children with Special Health Care Needs Who Are Currently Receiving Counseling, by Child's Age Group (LACHS 2005)

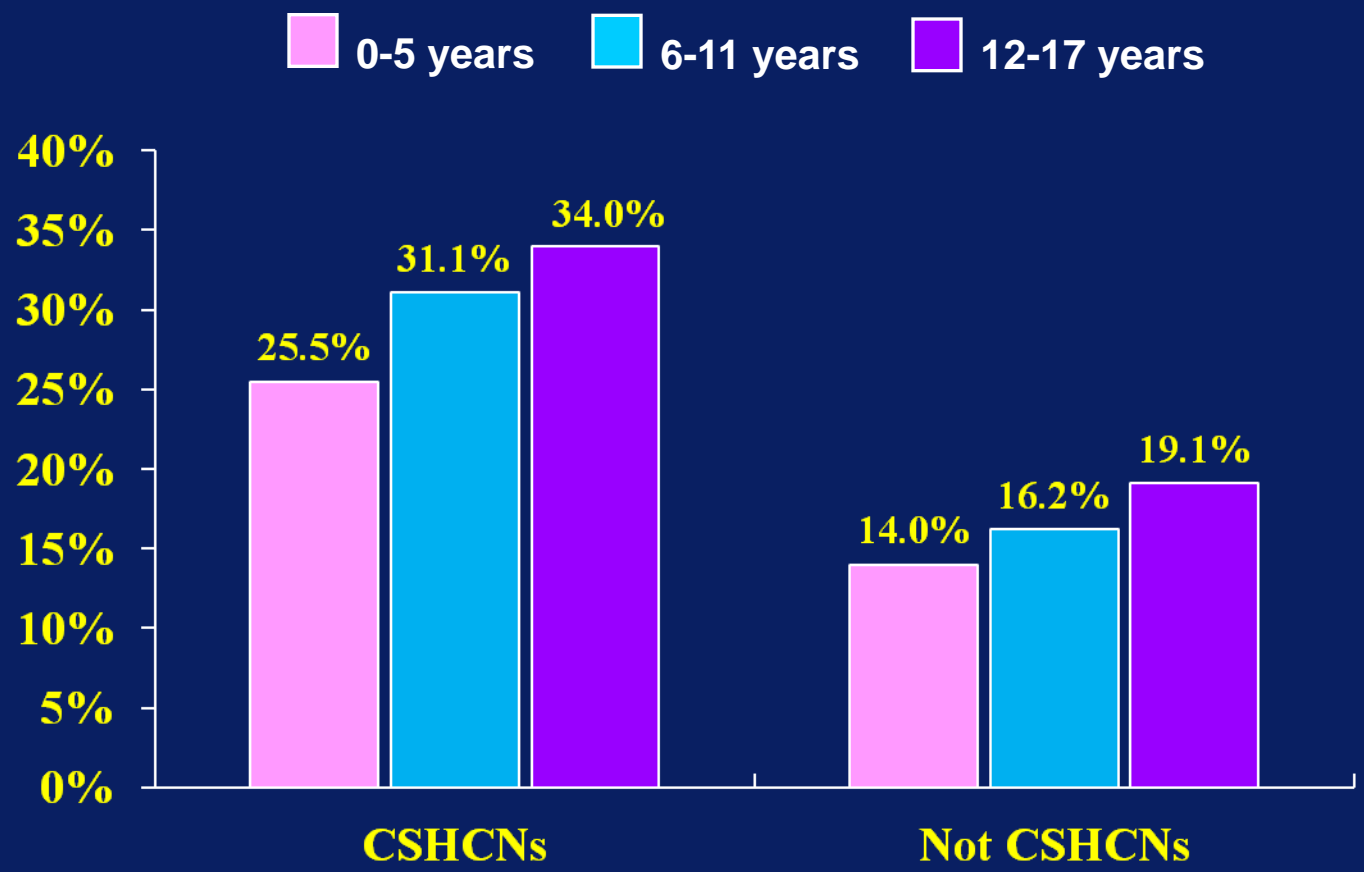


Children's Age Group (Years)

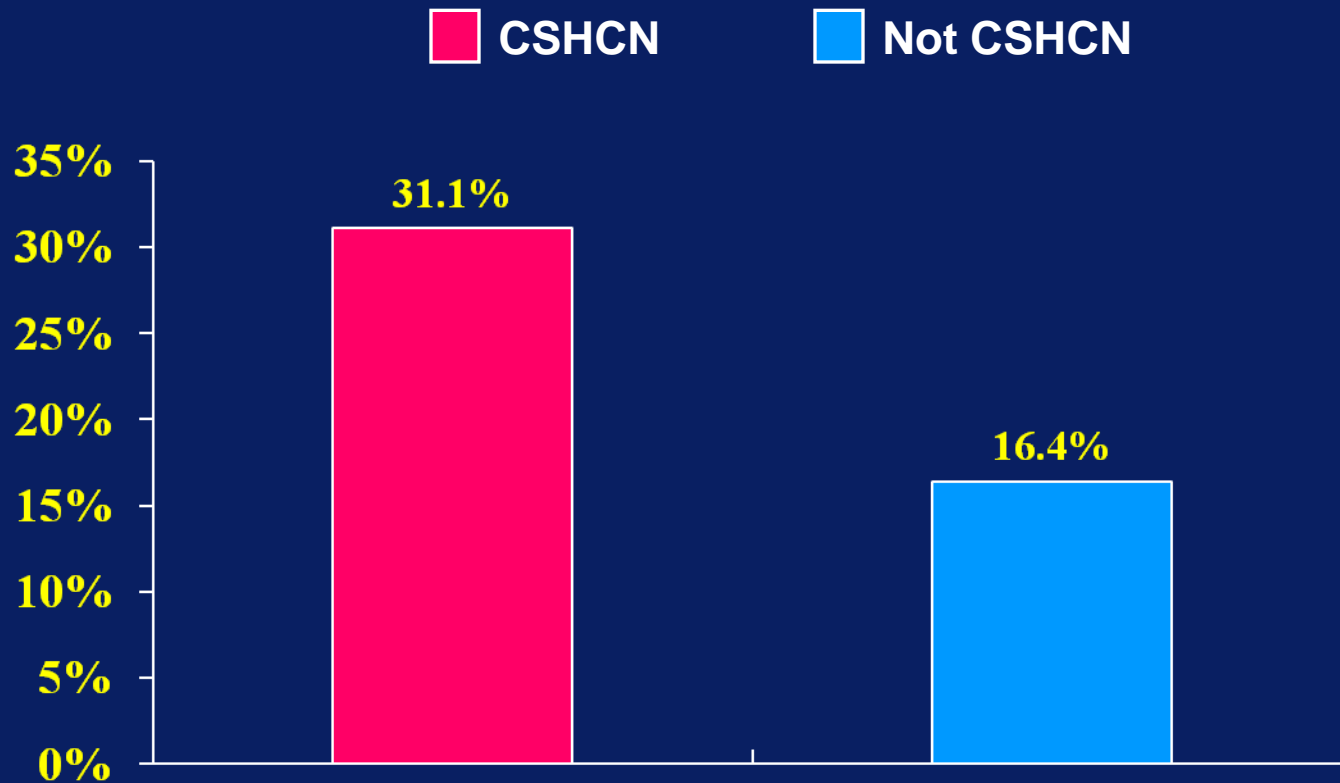


* The estimate is based on a small sample size and should be interpreted with caution.

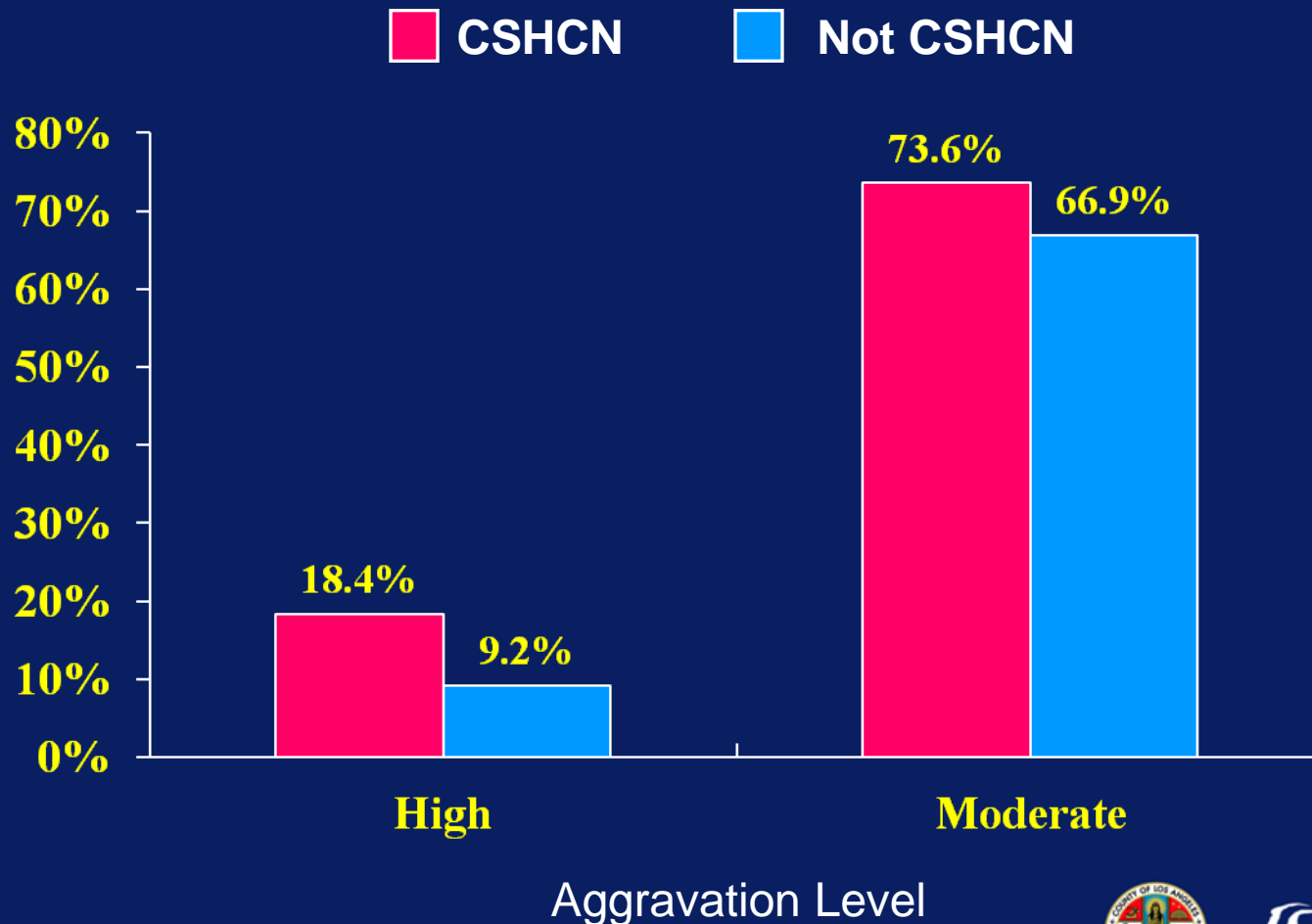
Risk for Depression Among LA County Parents of Children With or Without Special Health Care Needs, by Children's Age Group (LACHS 2005)



Diagnosed Depression Among LA County Parents of Children (0-17 years old) With or Without Special Health Care Needs (LACHS 2005)



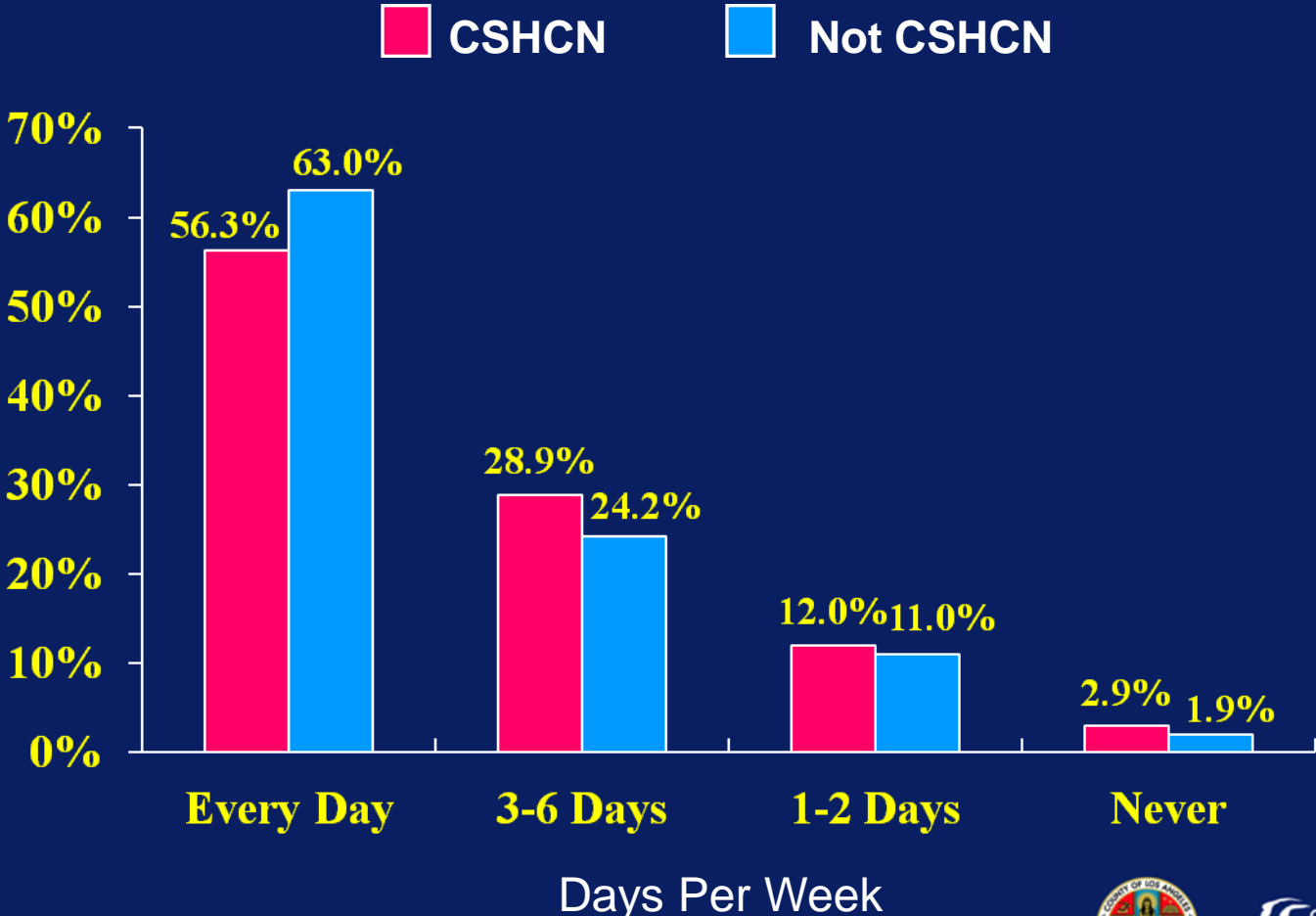
“Aggravation Level” for LA County Parents of Children (0-5 years old) With or Without Special Health Care Needs (LACHS 2005)



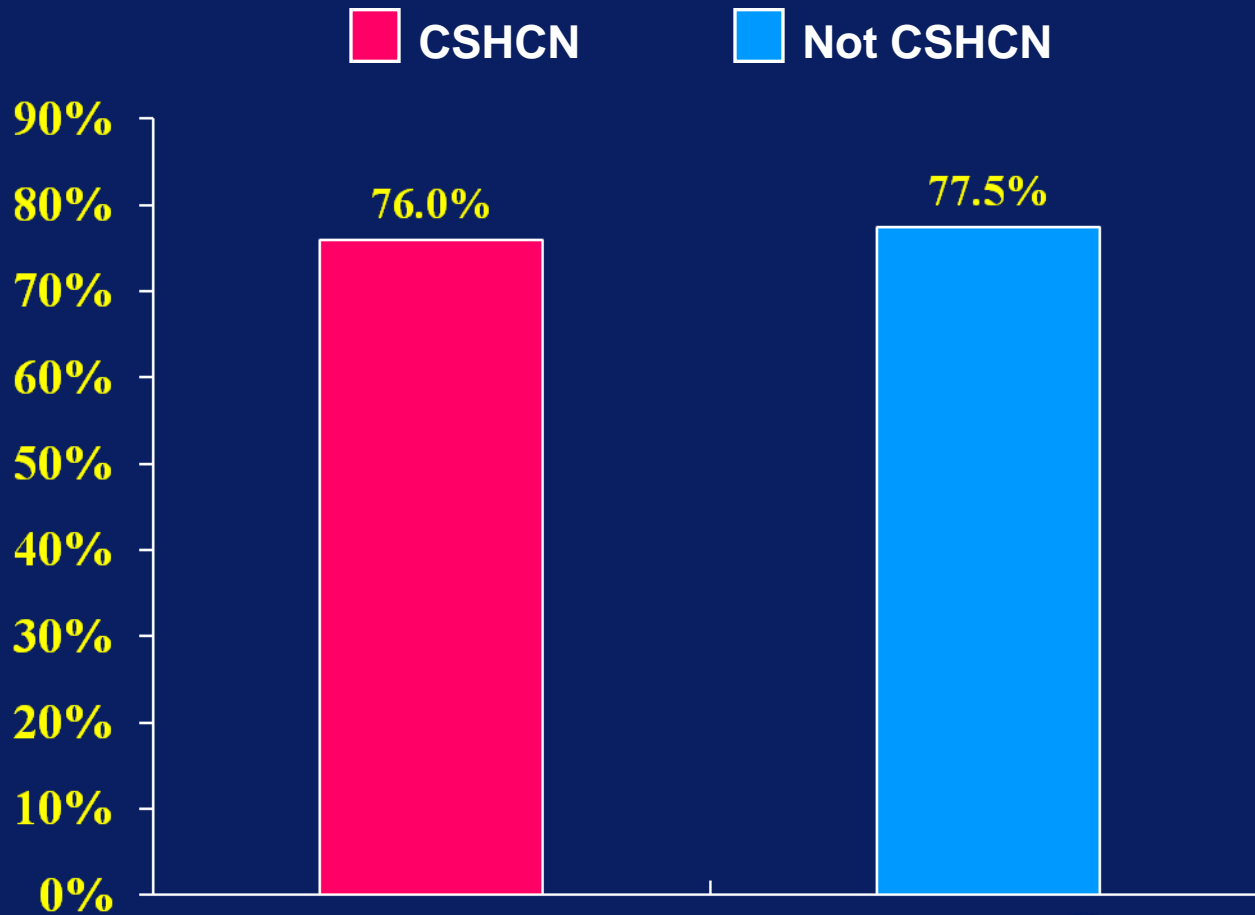
Child and Family Routines



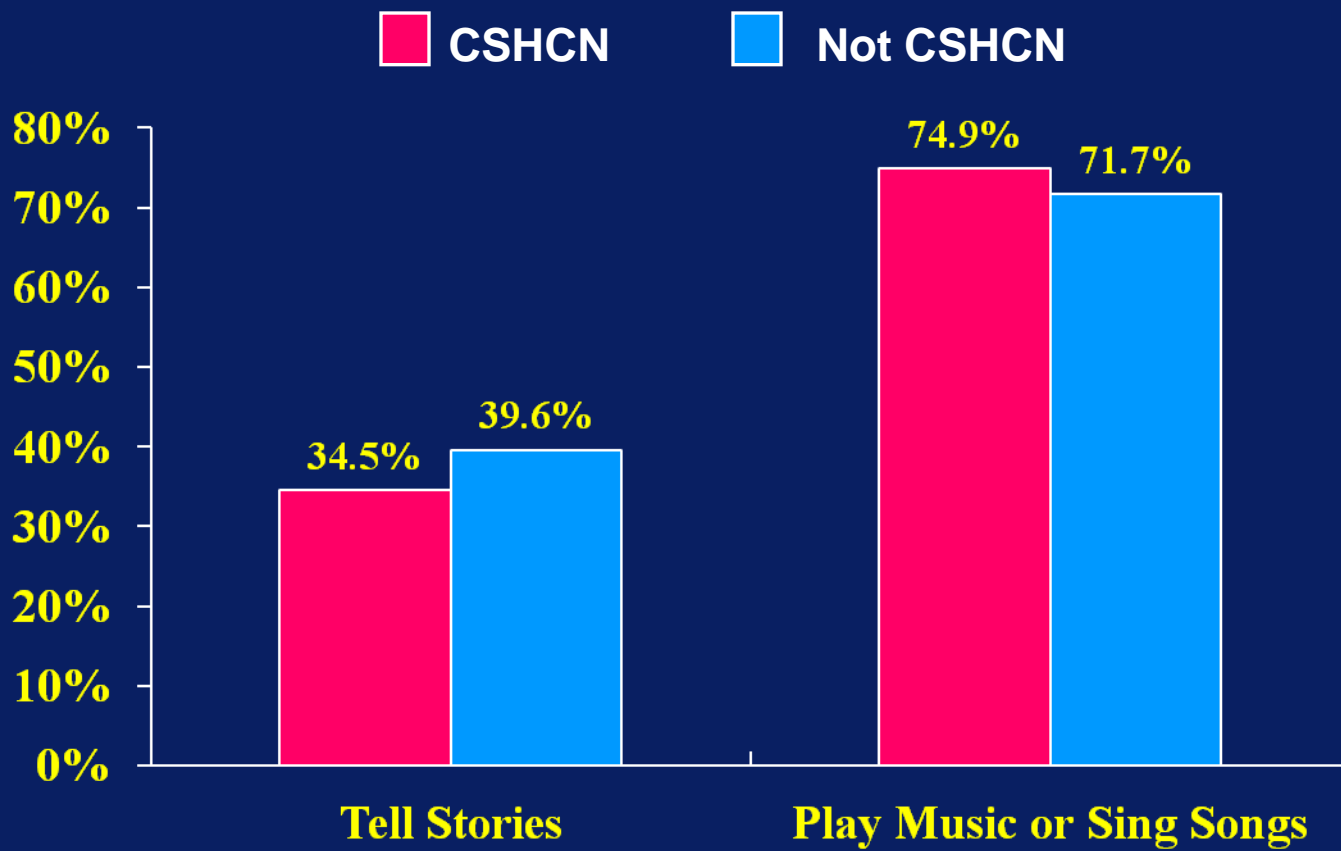
Number of Days (Per Week) Household Eats a Meal Together for Children (0-17 years old) With or Without Special Health Care Needs (LACHS 2005)



Children (2-17 years old) Who Consume Breakfast Daily (in a Typical Week) for Children With or Without Special Health Care Needs (LACHS 2005)



LA County Parents, or Other Family Members, Who Tell Stories or Play Music or Sing Songs With Child Every Day (in a Typical Week) for Children (0-5 years old) With or Without Special Health Care Needs (LACHS 2005)



Acknowledgements:

Thanks to the Health Assessment Unit

- Amy Lightstone, MPH, MA
- Gayane Meschyan, PhD
- Gigi Mathew, DrPH
- Jerome Blake, MPH
- Yajun Du, MPH
- Yan Cui, MD, PhD

