



PUBLIC WORKSHOP

5-Year Plan for the Office of Environmental Justice and Climate Health

Los Angeles County Department of Public Health
Environmental Health Division

January 25, 2024 | 5:00 – 6:30 pm



Interpretation | *Interpretación*



**Tableta
IPAD**

1

2

3

4



**Computadora
Computer**

1

2



**Teléfono Inteligente
Smart Phone**

1

2

3

4



PUBLIC WORKSHOP

5-Year Plan for the Office of Environmental Justice and Climate Health

Los Angeles County Department of Public Health
Environmental Health Division

January 25, 2024 | 5:00 – 6:30 pm



Agenda

1

**Welcome and
Introductions**

2

**Background and
Context**

3

Public Input

4

**Close Out and
Next Steps**



Workshop Objectives

- Learn about the Los Angeles County Department of Public Health (DPH), Environmental Health (EH) Division, **Office of Environmental Justice (EJ) and Climate Health**
- Provide **recommendations on key priorities** for Office of EJ and Climate Health's **Five-Year Plan**
- **Stay informed** about next steps and timing for the Five-Year Plan release



Getting to know the room (Zoom Poll)

- Which of the following categories best applies to you? (Select all that apply)
 - Resident/community member
 - Non-profit or community-based organization
 - Local jurisdiction
 - County agency
 - State or Federal Agency
 - Other
- How familiar are you with the Office of Environmental Justice and Climate Health? (Scale of 1 – 5, 1 being the least familiar)



Background and Context





What is the Office of EJ and Climate Health?

- Formerly the **DPH Toxicology and Environmental Assessment (TEA)** Branch under the Los Angeles County Department of Public Health
- On April 5, 2022, the Los Angeles County Board of Supervisors passed a motion titled, “Environmental Justice and Climate Health”
 - Established the Office of Environmental Justice and Climate Health
 - Directive included the development of a **Five-Year Plan**
- Shifting focus from **response to prevention**

The Office within the Department of Public Health



Key Functions of the Office of EJ and Climate Health



Community
Engagement



Interagency
Coordination



Policy



Data



Communications

Example Initiatives

Our Vision: Healthy People in Healthy Communities

OIL AND GAS FACILITIES HEALTH AND SAFETY RISKS



WHAT YOU CAN DO IF YOU LIVE, WORK, PLAY, OR STUDY NEAR AN OIL OR GAS FACILITY:

Climate Change and Health Equity

STRATEGIES FOR ACTION

REPORT

LEAD FREE HOMES

LOS ANGELES



Aliso Canyon Disaster Health Research Study

In partnership with Quest Diagnostics

FREE BLOOD LEAD SCREENING

IF YOU LIVE OR WORK NEAR EXIDE TECHNOLOGIES

1-800-LA-4-LEAD
(1-800-524-5323 - English/Español)



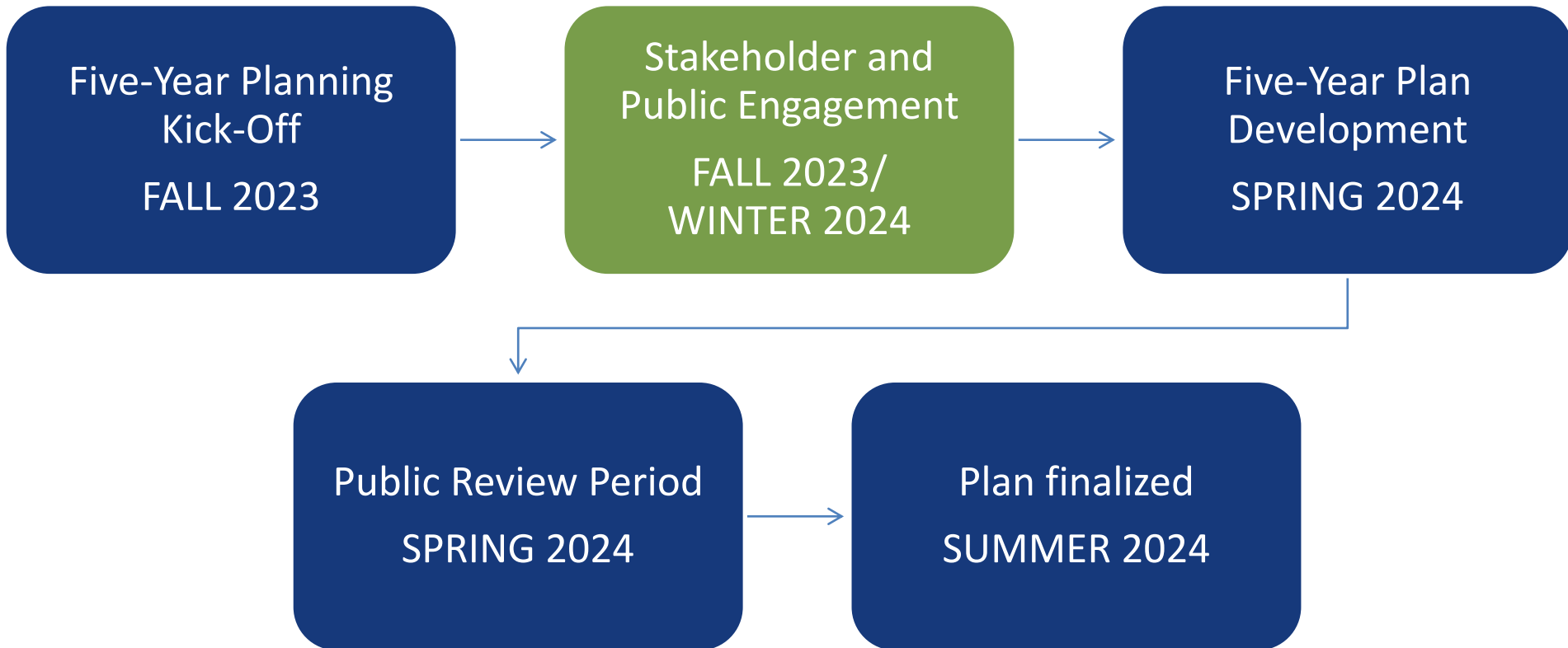
What is a Five-Year Plan?

A document that communicates a forward-looking vision of where an organization wants to be in the next 5-years.

Plan Framework



Developing the Five-Year Plan



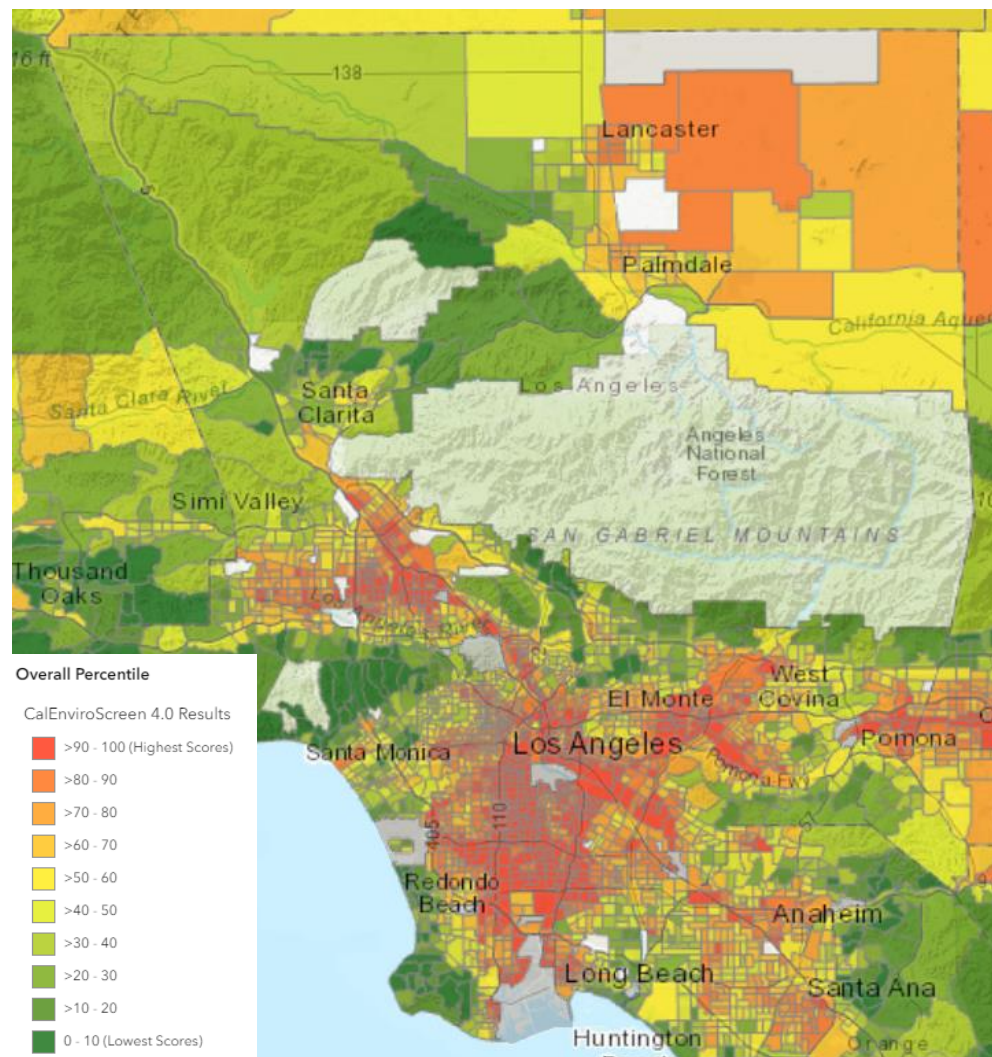
*Dates subject to change

Existing Conditions: CalEnviroScreen 4.0

CalEnviroScreen is a mapping tool that helps identify California communities that are most affected by and vulnerable to many sources of pollution.

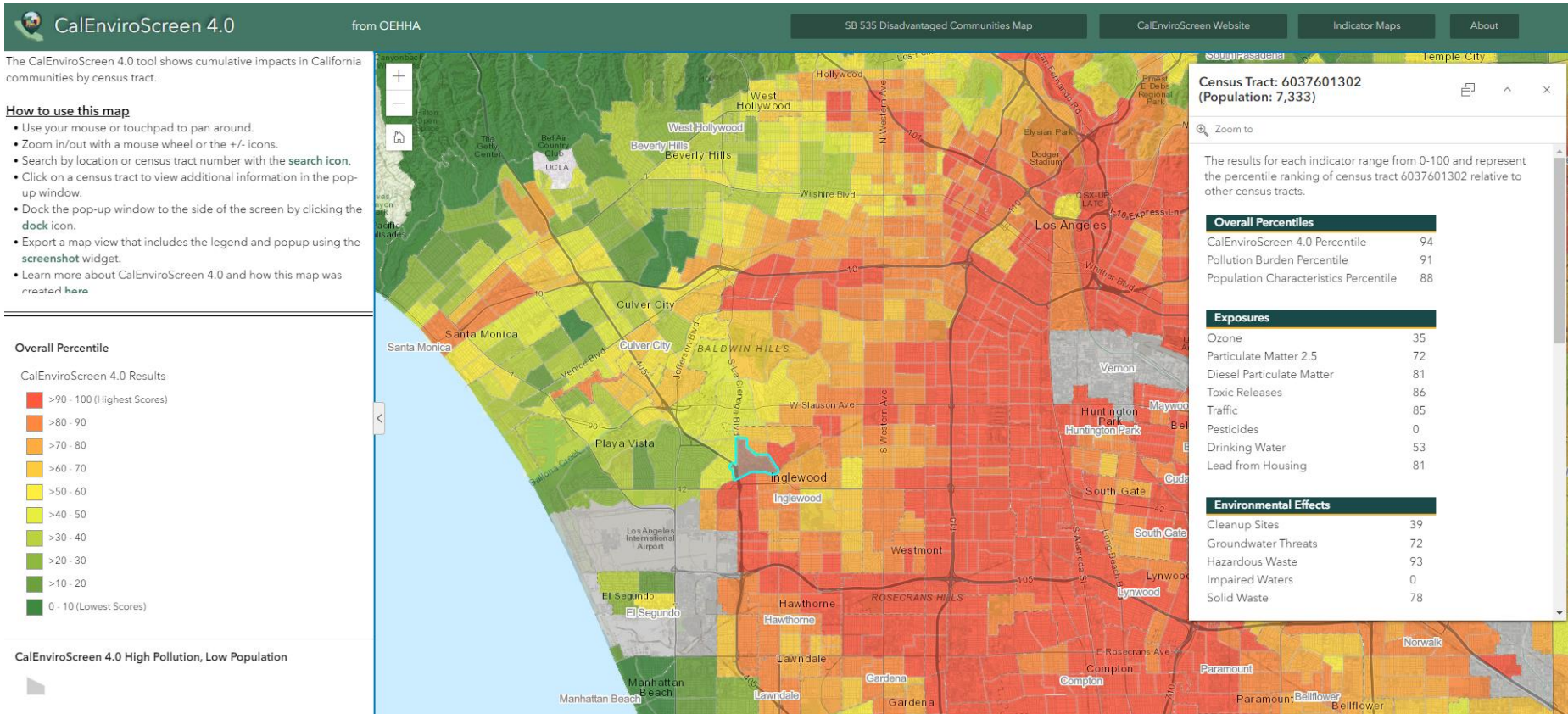
The tool was developed by the California Office of Environmental Health Hazard Assessment (OEHHA)

Anyone can access this map at:
oehha.ca.gov/calenviroscreen





Existing Conditions: Community Profile Example



Existing Conditions: Social Vulnerability to Climate Hazards

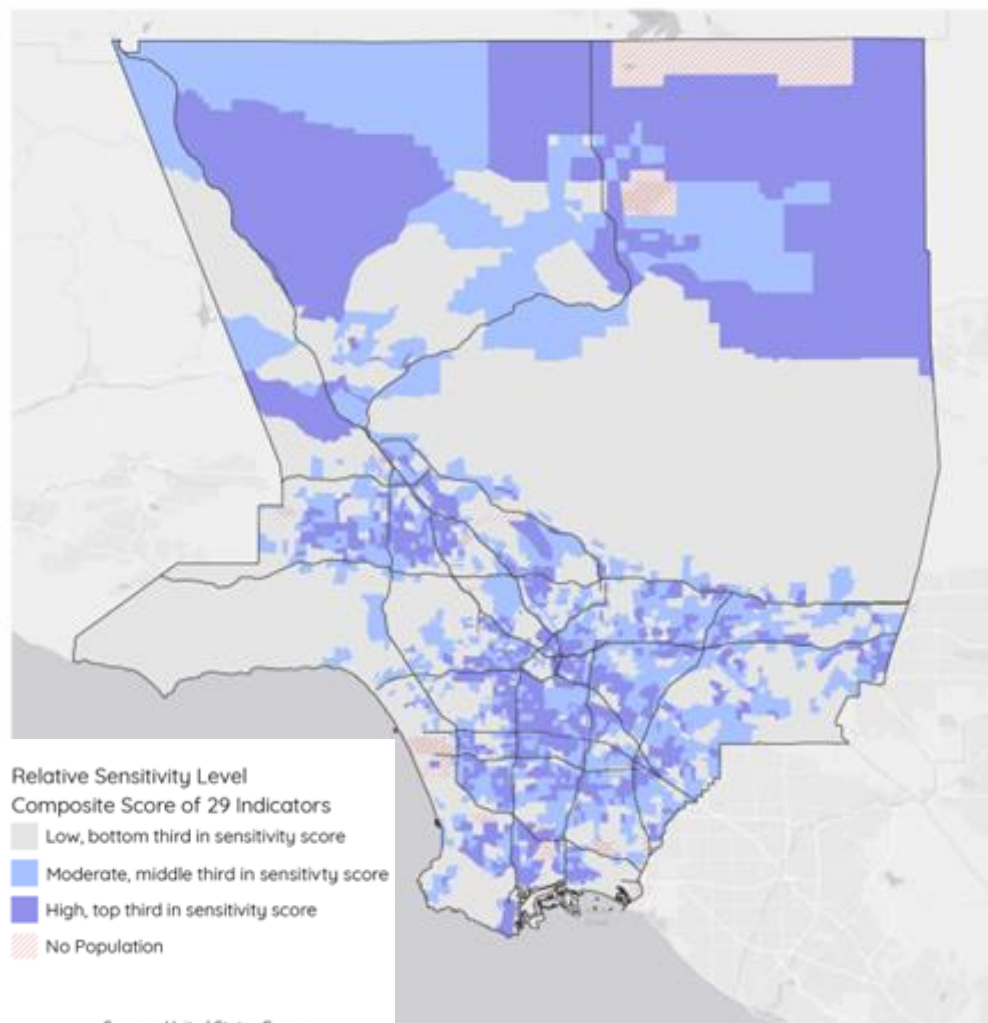
In 2021, the LA County Chief Sustainability Office examined the County's social and physical vulnerability to climate hazards through the Climate Vulnerability Assessment.

Five key climate hazards:

1. Extreme Heat
2. Wildfire
3. Inland flooding and extreme precipitation
4. Coastal flooding
5. Drought

For more information:

cso.lacounty.gov/the-plan/cso-current-initiatives/



Sources: United States Census Bureau, CEHTP and OSHPD, Los Angeles County ISD, SCAG.



Public Input



Exercise Instructions

- Mentimeter Platform
 - Participate in virtual boards about each of the five key functions of the Office of EJ and Climate Health
 - Discussion questions:
 - **What do you want to see from the Office regarding this key function?** This can include recommendations, best practices, and examples for the Office to consider.
 - **What questions or concerns do you have regarding this key function?**



**Click the link in the chat or use
smart phone to scan QR code to
participate!**



Community Engagement

What could the Office do to improve community engagement and deepen relationships with communities experiencing EJ issues?

EXAMPLES:

Establish a community advisory committee to shape the development and implementation of Public Health's environmental justice and climate equity actions

Train Public Health field staff to inform and engage residents on environmental justice and climate concerns, the health impact of climate change, and the health benefits of taking action to address change

Partner with community-based and non-profit organizations to co-design and co-implement outreach strategies for hard-to-reach communities

[Insert your recommendation here]



Interagency Coordination

What could the Office do to strengthen their role as convener or improve interagency coordination?

EXAMPLES:

Collaborate with the Chief Sustainability Office and other County departments to develop a sunset strategy for all oil and gas operations that prioritizes disproportionately affected communities

Work with school districts to incorporate sustainable practices that support community health into school settings

Partner with County departments to explore new ways to support highly impacted communities during extreme heat and improve cooling center operations and accessibility.

[Insert your recommendation here]



Policy

What strategies could the Office consider adding or changing for working on public health policy?

EXAMPLES:

Monitor and provide comment on policy and land use decisions that may adversely affect the health of disproportionately impacted communities.

Enhance occupational standards to protect lower-wage workers from hazardous conditions, including protecting workers from on-site toxic releases and heightened risks from heat-related events.

Mandates for community notification and emergency plans from all industrial facilities to relay understandable and accessible health and safety information to fence-line communities.

[Insert your recommendation here]



Data

How do you think the Office could improve their use of data and science?

EXAMPLES:

Build a web-based, publicly accessible data dashboard to serve as a central information hub, featuring layperson-friendly data visualizations. Data will be useful, inclusive, timely, disaggregated, and community-specific.

Support partners with data-driven health assessments and targeted studies in response to requests from partner organizations, stakeholders, and community members.

Provide timely, periodic (i.e., annual, semi-annual) reports, talking points, fact sheets, presentations, and/or briefings on relevant topics, such as toxic exposures, industrial pollution, heat-related illness, and other environmental impacts.

[Insert your recommendation here]



Communication

What could the Office do to improve their communication strategies?

EXAMPLES:

Develop partnerships with local community-based organizations that focus on climate health and environmental justice messaging.

Craft materials that are culturally appropriate, use visuals and infographics, and are available in multiple languages specific to local communities such as industrial pollution and heat-related illness, to raise awareness, drive public discourse, and influence programmatic and policy decisions

Train or hire a staff member to be a communications specialist who can build awareness, clarify complex data, navigate sensitive topics, and highlight County achievements related to environmental justice and climate change.

[Insert your recommendation here]



Questions and Answers

What questions or concerns do you have about the Office of EJ and Climate Health and/or its proposed key functions?

Please add your questions or comments in the chat.

The Office will develop a Frequently Asked Questions (FAQ) document and will share it with everyone at a later date.

Any other questions or comments can be sent to DPH-OEJCH@ph.lacounty.gov.



Close Out & Next Steps



Next Steps

- Incorporate comments into the development of the Office of EJ and Climate Health's Five-Year Plan
- Draft Plan to be released for public comment in Spring 2024
- Plan to be finalized by Summer 2024

**Note: Dates are subject to change*



Workshop Calendar

Supervisory District 1	Thursday, February 8 at 9:00 a.m. hosted by Day One: 320 S. Thomas Street, Pomona, CA 91766	Wednesday, February 21 at 9:30 a.m. hosted by Central City Neighborhood Partners: 501 S. Bixel Street, Los Angeles, CA 90017
Supervisory District 2	Wednesday, February 28 at 10 a.m. hosted by Del Amo Action Committee: Virtual via Zoom	Saturday, March 2 at 10 a.m. hosted by Del Amo Action Committee: 20101 Hamilton Ave., Suite #170, Torrance, CA 90502
Supervisory District 3	Friday, February 9 at 12:00 p.m. hosted by Pacoima Beautiful 12510 Van Nuys Blvd., #302, Pacoima, CA 91331	
Supervisory District 4	Thursday, February 29 at 5:00 p.m. hosted by Southeast LA Collaborative: Clara Street Park, 4835 Clara Street, Cudahy, CA 90201	
Supervisory District 5	Wednesday, February 7 at 7:30 a.m. hosted by Day One: 300 S. Los Robles Avenue, Pasadena, CA 91101	



Thank you!

