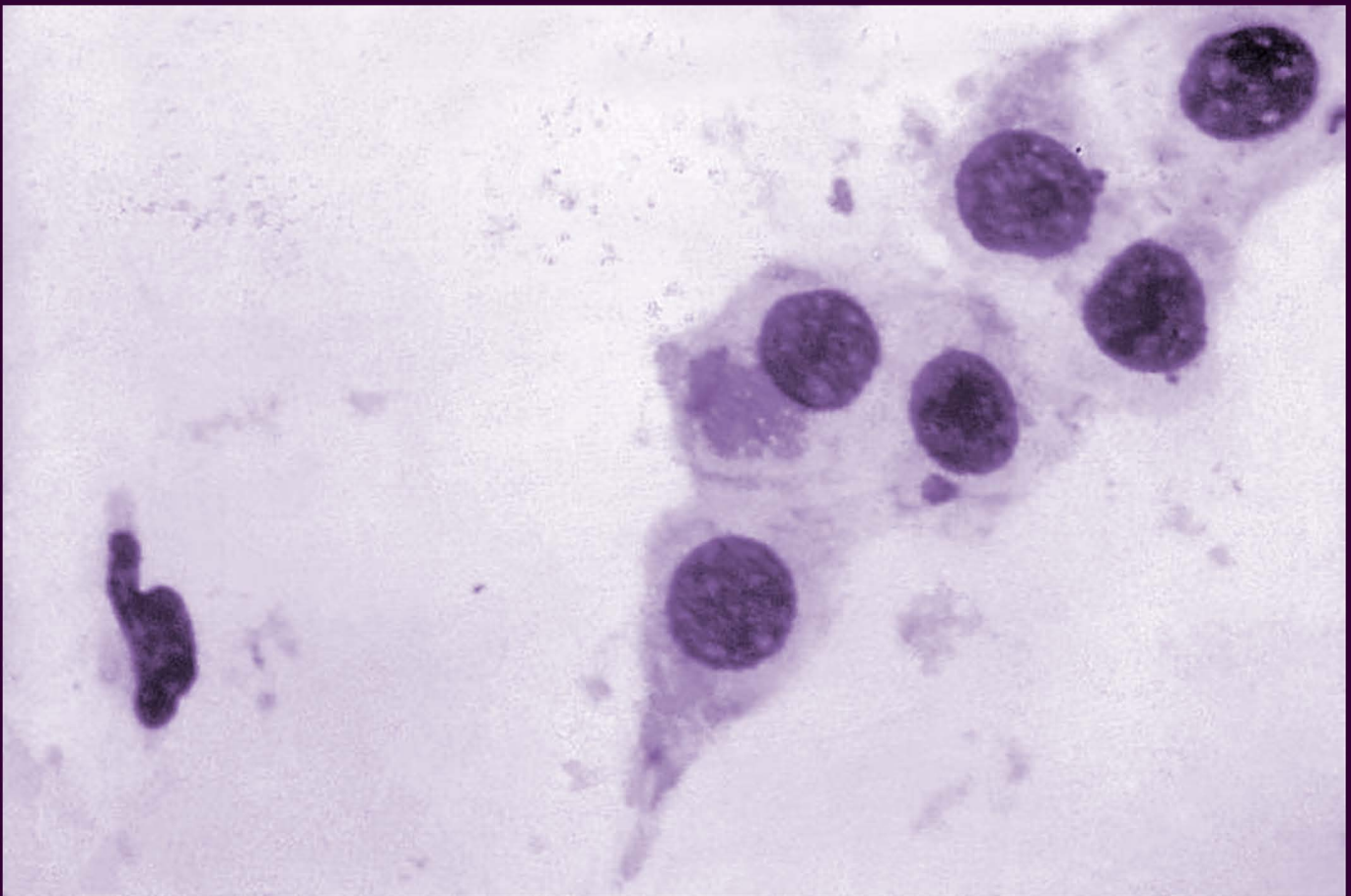




COUNTY OF LOS ANGELES
Public Health

Sexually Transmitted Disease Program

Los Angeles County Infertility Prevention Project (LACIPP)
Annual Report
January - December 2005



2615 South Grand Avenue, Room 500
Los Angeles, CA 90007
Tel: (213) 744-3070 Fax: (213) 749-9606

www.lapublichealth.org/std



COUNTY OF LOS ANGELES
Public Health



JONATHAN E. FIELDING, M.D., M.P.H.
Acting Director and Health Officer

JOHN SCHUNHOFF, Ph.D.
Acting Chief Deputy

313 North Figueroa Street, Room 909
Los Angeles, California 90012
TEL (213) 240-8117 • FAX (213) 975-1273

www.lapublichealth.org

BOARD OF SUPERVISORS

Gloria Molina
First District

Yvonne B. Burke
Second District

Zev Yaroslavsky
Third District

Don Knabe
Fourth District

Michael D. Antonovich
Fifth District

August 31, 2006
Dear Colleague:

We are pleased to release the 2005 report on the Los Angeles County Infertility Prevention Project (LACIPP) prevalence monitoring and sentinel surveillance activities. In 1995, in response to the serious health concern that *chlamydia trachomatis* infections pose to the future of women's reproductive health, LAC Sexually Transmitted Disease Program (STDP) initiated LACIPP, in partnership with the California Family Health Council. The purpose of LACIPP is to reduce the incidence of chlamydia and resulting medical complications, including pelvic inflammatory disease. LACIPP is part of a regional and national effort sponsored by the Centers for Disease Control and Prevention.

LACIPP works with more than 39 Title X family planning agencies (52 sites), 14 Los Angeles County Department of Health Services (DHS) STD clinics, and several high school and community college-based health centers, adult and juvenile detention centers, in addition to other sites throughout Los Angeles County

Chlamydia prevalence in 2005 has remained high among family planning patients at 4.7% in females and 5.4% in males (partners of infected females), as well as STD clinic patients ranging from 4-19% in females and 5-22% in males, high school-based health centers at 9.5% in females and 10.3% in males and community college health centers at 4.2% in females and 5.4% in males. Adult and juvenile correctional facilities have proven effective settings to reach high-risk STD patients with little or no access to other health services. Women ages 18-30 and those arrested for prostitution or pregnant are offered screening at LAC County Jail, and a chlamydia prevalence of 14.1% was identified in 2005. Chlamydia prevalence among girls screened at Juvenile Halls was 16% and among males it was 7% in 2005. A full report on this juvenile hall screening, entitled "Chlamydia and Gonorrhea Screening in Three Juvenile Hall Facilities, 2005" can be reviewed at <http://lapublichealth.org/std>.

In 2006, LACIPP expanded prevention efforts by adding two new college health centers as sentinel surveillance sites, and by implementing a new project to provide non-clinic-based screening at alternative test sites, such as schools, parks and community service agencies.

Sincerely,

Peter R. Kerndt, MD, MPH
Director

LOS ANGELES COUNTY
Infertility Prevention Project
Annual Report 2005

Chlamydia is a sexually transmitted disease (STD) that is currently at epidemic levels in Los Angeles County and the nation. More than 5 million cases of chlamydia are reported annually to the Centers for Disease Control and Prevention (CDC). Most common among adolescents and young adults under the age of 25, chlamydia infections can be found in approximately 3% of women of childbearing age and 10% of sexually active adolescent girls. In both males and females, chlamydia often causes only mild symptoms or no symptoms at all. If untreated, the infection can lead to serious complications including infertility, tubal pregnancies and chronic pelvic pain. Chlamydia is the leading preventable cause of infertility in California.

The Los Angeles County Infertility Prevention Project (LACIPP) was established by the Los Angeles County Sexually Transmitted Disease Program in partnership with the California Family Health Council, to reduce the incidence of *chlamydia trachomatis* and resulting medical complications that can cause infertility in women. LACIPP is part of a national effort sponsored by the CDC and the Federal Office of Population Affairs. LACIPP activities are coordinated with Infertility Prevention Projects in Nevada, Arizona, Hawaii, and other California counties through a regional advisory committee.

Chlamydia continued to prove a serious and highly prevalent disease in 2005. In Los Angeles County, 38,362 cases of chlamydia were reported, 60% of which were among 15-24 year-olds. While it tends to be most prevalent among adolescents and young adults, chlamydia is fairly evenly distributed geographically throughout the county. Both males and females are at high risk. In addition, the attached report reflects that chlamydia remains an overwhelmingly asymptomatic infection. This highlights the importance of expanded screening and prevention services.

In 2005, LACIPP worked to reduce the incidence of chlamydia in Los Angeles County by:

Establishing chlamydia "sentinel sites". Fourteen family planning clinics, fourteen STD clinics, a high school-based clinic, and seven college health centers, three juvenile halls, and an adult jail in L.A. County have been established as LACIPP "sentinel sites" to collect further information on clients who receive testing for chlamydia. Data collected include client demographics, clinical information and behavioral risk factors for chlamydia. Results are used to monitor trends among specific populations, identify those most at risk, develop screening recommendations, and improve prevention strategies. Data collected in 2005 at selected sentinel surveillance sites are presented in this report.

Expanding chlamydia screening. LACIPP worked to expand access to chlamydia testing for under-served populations. Project funds supported expanded chlamydia screening among L.A. County juvenile hall and adult detainees, adolescents attending high school-based clinics, and students at community colleges. A special project providing chlamydia screening to women entering L.A. County's adult jail is currently in progress. Data collected in 2005 at these sites through special projects are presented in tables in this report.

Improving the quality of clinical care. LACIPP provides training and technical assistance on chlamydia-related clinical care to family planning clinic staff and other health care providers. Clinical Practice Guidelines for chlamydia diagnosis, testing, treatment, patient education and partner management have been issued by LACIPP in collaboration with the regional advisory committee. LACIPP provides on-site trainings for partner management, disseminates up-to-date information on testing technologies, and has assisted clinics in obtaining single-dose medications for chlamydia. In 2005, LACIPP continued to provide participating clinic sites with medication, training, and technical support to expand availability of Patient-Delivered Partner Therapy for chlamydia patients.

Increasing patient/client and public awareness. LACIPP develops and coordinates special projects such as the Condom Package Art Contest for teens and young adults. Public awareness activities include selecting and disseminating culturally appropriate educational materials and working with the media to promote chlamydia awareness and prevention. In 2006, a Sexual Health Awareness Campaign for community college students will be expanded in partnership with student health center staff and student interns. Other partnerships will be sought to broaden public awareness of chlamydia, its risks and complications, and prevention strategies.

TABLE OF CONTENTS

- Table 1: Summary of chlamydia testing at sentinel sites in LA County, by gender, Los Angeles County Infertility Prevention Project (LACIPP), 2005.
- Table 2: Summary of gonorrhea testing at sentinel sites in LA County, by gender, Los Angeles County Infertility Prevention Project (LACIPP), 2005.
- Table 3a: Chlamydia positivity among females by age, L.A. County, LACIPP, Sentinel Sites, 2005.
- Table 3b: Chlamydia positivity among males by age, L.A. County, LACIPP, Sentinel Sites, 2005.
- Table 4a: Gonorrhea positivity among females by age, L.A. County, LACIPP, Sentinel Sites, 2005.
- Table 4b: Gonorrhea positivity among males by age, L.A. County, LACIPP, Sentinel Sites, 2005.
- Table 5: Chlamydia and gonorrhea screening of female inmates at Twin Towers Correctional Facility, LACIPP, 2005.
- Table 6a: Chlamydia positivity by age, Twin Towers, 2005.
- Table 6b: Gonorrhea positivity by age, Twin Towers, 2005.
- Table 7: Chlamydia screening of inmates at Central Juvenile Hall by gender, LACIPP, 2005.
- Table 8: Gonorrhea screening of inmates at Central Juvenile Hall by gender, LACIPP, 2005.
- Table 9a: Chlamydia positivity among females at Central Juvenile Hall by race and age group, 2005.
- Table 9b: Chlamydia positivity among males at Central Juvenile Hall by race and age group, 2005.
- Table 10a: Gonorrhea positivity among females at Central Juvenile Hall by race and age group, 2005.
- Table 10b: Gonorrhea positivity among males at Central Juvenile Hall by race and age group, 2005.

- Table 11: Chlamydia screening of inmates at Los Padrinos Juvenile Hall by gender, LACIPP, 2005.
- Table 12: Gonorrhea screening of inmates at Los Padrinos Juvenile Hall by gender, LACIPP, 2005.
- Table 13a: Chlamydia positivity among females at Los Padrinos Juvenile Hall by race and age group, 2005.
- Table 13b: Chlamydia positivity among males at Los Padrinos Juvenile Hall by race and age group, 2005.
- Table 14a: Gonorrhea positivity among females at Los Padrinos Juvenile Hall by race and age group, 2005.
- Table 14b: Gonorrhea positivity among males at Los Padrinos Juvenile Hall by race and age group, 2005.
- Table 15: Chlamydia screening of inmates at San Fernando Juvenile Hall by gender, LACIPP, 2005.
- Table 16: Gonorrhea screening of inmates at San Fernando Juvenile Hall by gender, LACIPP, 2005.
- Table 17a: Chlamydia positivity among females at San Fernando Juvenile Hall by race and age group, 2005.
- Table 17b: Chlamydia positivity among males at San Fernando Juvenile Hall by race and age group, 2005.
- Table 18a: Gonorrhea positivity among females at San Fernando Juvenile Hall by race and age group, 2005.
- Table 18b: Gonorrhea positivity among males at San Fernando Juvenile Hall by race and age group, 2005.
- Table 19: Chlamydia screening of students at school based clinics by gender, LACIPP, 2005.
- Table 20: Gonorrhea screening of students at school based clinics by gender, LACIPP, 2005.
- Table 21a: Chlamydia positivity among females at eight school based clinics by race and age group, 2005.
- Table 21b: Chlamydia positivity among males at eight school based clinics by race and age group, 2005.

- Table 22a: Gonorrhea positivity among females at eight school based clinics by race and age group, 2005.
- Table 22b: Gonorrhea positivity among males at eight school based clinics by race and age group, 2005.
- Table 23: Chlamydia and gonorrhea screening of patients at Harbor/UCLA by gender, LACIPP, 2005.
- Table 24a: Chlamydia positivity among females at Harbor/UCLA by race and age group, 2005.
- Table 24b: Chlamydia positivity among males at Harbor/UCLA by race and age group, 2005.
- Table 25a: Gonorrhea positivity among females at Harbor/UCLA by race and age group, 2005.
- Table 25b: Gonorrhea positivity among males at Harbor/UCLA by race and age group, 2005.
- Table 26: Chlamydia screening at Los Angeles County health centers by gender, LACIPP, 2005.
- Table 27: Gonorrhea screening at Los Angeles County health centers by gender, LACIPP, 2005.
- Table 28a: Chlamydia positivity among females at Los Angeles County health centers by race and age group, 2005.
- Table 28b: Chlamydia positivity among males at Los Angeles County health centers by race and age group, 2005.
- Table 29a: Gonorrhea positivity among females at Los Angeles County health centers by race and age group, 2005.
- Table 29b: Gonorrhea positivity among males at Los Angeles County health centers by race and age group, 2005.

APPENDICES

Appendix A: Technical notes: data collection

Appendix B: Clinical description of chlamydia and gonorrhea

Table 1. Summary of chlamydia testing at sentinel sites in LA County by gender, Los Angeles County Infertility Prevention Project (LACIPP), 2005.

| LACIPP Sentinel Site | Total [^] | | | Female | | | Male | | |
|---|--------------------|------------|------------|------------------|------------|------------|------------------|------------|------------|
| | Chlamydia Tested | N Positive | % Positive | Chlamydia Tested | N Positive | % Positive | Chlamydia Tested | N Positive | % Positive |
| All Sites | 66,182 | 6,626 | 10.0 | 27,290 | 3,279 | 12.0 | 38,857 | 3,345 | 8.6 |
| <u>Correctional Facilities</u> | | | | | | | | | |
| Twin Towers II ¹ | 5,223 | 738 | 14.1 | 5,223 | 738 | 14.1 | | N/A | |
| Central Juvenile Hall | 6,899 | 484 | 7.0 | 1,821 | 255 | 14.0 | 5,077 | 229 | 4.5 |
| Los Padrinos Juvenile Hall | 9,544 | 806 | 8.4 | 1,927 | 362 | 18.8 | 7,612 | 443 | 5.8 |
| San Fernando Juvenile Hall | 5,157 | 318 | 6.2 | 1,221 | 159 | 13.0 | 3,932 | 158 | 4.0 |
| <u>Schools/Colleges</u> | | | | | | | | | |
| Cal State Dominguez Hills | 729 | 30 | 4.1 | 520 | 23 | 4.4 | 209 | 7 | 3.3 |
| College of the Canyons | 407 | 28 | 6.9 | 316 | 18 | 5.7 | 91 | 10 | 11.0 |
| East LA College | 243 | 2 | 0.8 | 163 | 2 | 1.2 | 80 | 0 | 0.0 |
| El Camino College | 231 | 14 | 6.1 | 135 | 6 | 4.4 | 96 | 8 | 8.3 |
| LA Trade Tech College | 23 | 1 | 4.3 | 12 | 0 | 0.0 | 11 | 1 | 9.1 |
| Pasadena City College | 439 | 20 | 4.6 | 295 | 12 | 4.1 | 144 | 8 | 5.6 |
| Jordan High School | 131 | 13 | 9.9 | 128 | 13 | 10.2 | 3 | 0 | 0.0 |
| San Fernando High School | 446 | 12 | 2.7 | 380 | 11 | 2.9 | 66 | 1 | 1.5 |
| <u>Health Facilities</u> | | | | | | | | | |
| Antelope Valley Health Center ² | 659 | 132 | 20.0 | 305 | 55 | 18.0 | 353 | 77 | 21.8 |
| Burke Health Center ² | 716 | 48 | 6.7 | 178 | 15 | 8.4 | 538 | 33 | 6.1 |
| Central Health Center ² | 3,914 | 304 | 7.8 | 1,116 | 119 | 10.7 | 2,795 | 185 | 6.6 |
| Curtis Tucker Health Center ² | 4,235 | 557 | 13.2 | 1,693 | 192 | 11.3 | 2,541 | 365 | 14.4 |
| Glendale Health Center ² | 685 | 57 | 8.3 | 189 | 19 | 10.1 | 496 | 38 | 7.7 |
| Hollywood-Wilshire Health Center ² | 3,447 | 243 | 7.0 | 676 | 67 | 9.9 | 2,771 | 176 | 6.4 |
| Monrovia Health Center ² | 2,004 | 270 | 13.5 | 720 | 120 | 16.7 | 1,283 | 150 | 11.7 |
| North Hollywood Health Center ² | 1,357 | 157 | 11.6 | 374 | 56 | 15.0 | 976 | 101 | 10.3 |
| Pacoima Health Center ² | 705 | 56 | 7.9 | 213 | 12 | 5.6 | 492 | 44 | 8.9 |
| Pomona Health Center ² | 1,064 | 165 | 15.5 | 377 | 73 | 19.4 | 687 | 92 | 13.4 |
| Ruth Temple Health Center ² | 5,886 | 726 | 12.3 | 2,674 | 306 | 11.4 | 3,209 | 420 | 13.1 |
| South Health Center ² | 5,016 | 814 | 16.2 | 2,263 | 347 | 15.3 | 2,751 | 467 | 17.0 |
| Torrance Health Center ² | 824 | 119 | 14.4 | 297 | 45 | 15.2 | 527 | 74 | 14.0 |
| Whittier Health Center ² | 2,668 | 368 | 13.8 | 968 | 133 | 13.7 | 1,693 | 235 | 13.9 |
| Harbor/UCLA ³ | 3,530 | 144 | 4.1 | 3,106 | 121 | 3.9 | 424 | 23 | 5.4 |

¹Women's correctional facility.

²Los Angeles County Health Centers.

³Family planning facility.

[^]Includes missing values for gender.

*Due to a shortage of laboratory test reagents the number of chlamydia and gonorrhea tests may differ.

Table 2. Summary of gonorrhea testing at sentinel sites in LA County by gender, Los Angeles County Infertility Prevention Project (LACIPP), 2005.

| LACIPP Sentinel Site | Total [^] | | | Female | | | Male | | |
|---|---------------------|---------------|---------------|---------------------|---------------|---------------|---------------------|---------------|---------------|
| | Gonorrhea Tested | N Positive | % Positive | Gonorrhea Tested | N Positive | % Positive | Gonorrhea Tested | N Positive | % Positive |
| All Sites | 66,422 | 2,941 | 4.4 | 27,387 | 1,068 | 3.9 | 39,035 | 1,873 | 4.8 |
| <u>Correctional Facilities</u> | | | | | | | | | |
| Twin Towers II ¹ | 5,223 | 273 | 5.2 | 5,223 | 273 | 5.2 | | N/A | |
| Central Juvenile Hall | 6,940 | 112 | 1.6 | 1,836 | 76 | 4.1 | 5,103 | 36 | 0.7 |
| Los Padrinos Juvenile Hall | 9,546 | 197 | 2.1 | 1,928 | 123 | 6.4 | 7,613 | 74 | 1.0 |
| San Fernando Juvenile Hall | 5,161 | 70 | 1.4 | 1,223 | 49 | 4.0 | 3,934 | 21 | 0.5 |
| <u>Schools/Colleges</u> | | | | | | | | | |
| Cal State Dominguez Hills | 729 | 5 | 0.7 | 520 | 4 | 0.8 | 209 | 1 | 0.5 |
| College of the Canyons | 407 | 1 | 0.2 | 316 | 0 | 0.0 | 91 | 1 | 1.1 |
| East LA College | 243 | 0 | 0.0 | 163 | 0 | 0.0 | 80 | 0 | 0.0 |
| El Camino College | 231 | 4 | 1.7 | 135 | 1 | 0.7 | 96 | 3 | 3.1 |
| LA Trade Tech College | 23 | 0 | 0.0 | 12 | 0 | 0.0 | 11 | 0 | 0.0 |
| Pasadena City College | 439 | 1 | 0.2 | 295 | 0 | 0.0 | 144 | 1 | 0.7 |
| Jordan High School | 131 | 2 | 1.5 | 128 | 2 | 1.6 | 3 | 0 | 0.0 |
| San Fernando High School | 446 | 1 | 0.2 | 380 | 0 | 0.0 | 66 | 1 | 1.5 |
| <u>Health Facilities</u> | | | | | | | | | |
| Antelope Valley Health Center ² | 662 | 50 | 7.6 | 306 | 25 | 8.2 | 355 | 25 | 7.0 |
| Burke Health Center ² | 717 | 15 | 2.1 | 179 | 3 | 1.7 | 538 | 12 | 2.2 |
| Central Health Center ² | 3,930 | 170 | 4.3 | 1,110 | 37 | 3.3 | 2,817 | 133 | 4.7 |
| Curtis Tucker Health Center ² | 4,278 | 301 | 7.0 | 1,718 | 74 | 4.3 | 2,559 | 227 | 8.9 |
| Glendale Health Center ² | 689 | 11 | 1.6 | 190 | 3 | 1.6 | 499 | 8 | 1.6 |
| Hollywood-Wilshire Health Center ² | 3,461 | 234 | 6.8 | 676 | 12 | 1.8 | 2,785 | 222 | 8.0 |
| Monrovia Health Center ² | 1,994 | 55 | 2.8 | 718 | 12 | 1.7 | 1,275 | 43 | 3.4 |
| North Hollywood Health Center ² | 1,358 | 72 | 5.3 | 374 | 15 | 4.0 | 977 | 57 | 5.8 |
| Pacoima Health Center ² | 719 | 29 | 4.0 | 224 | 3 | 1.3 | 495 | 26 | 5.3 |
| Pomona Health Center ² | 1,069 | 35 | 3.3 | 377 | 8 | 2.1 | 692 | 27 | 3.9 |
| Ruth Temple Health Center ² | 5,978 | 485 | 8.1 | 2,701 | 138 | 5.1 | 3,274 | 347 | 10.6 |
| South Health Center ² | 5,035 | 647 | 12.9 | 2,269 | 149 | 6.6 | 2,764 | 497 | 18.0 |
| Torrance Health Center ² | 828 | 34 | 4.1 | 300 | 8 | 2.7 | 528 | 26 | 4.9 |
| Whittier Health Center ² | 2,690 | 119 | 4.4 | 980 | 38 | 3.9 | 1,703 | 81 | 4.8 |
| Harbor/UCLA ³ | 3,530 | 19 | 0.5 | 3,106 | 15 | 0.5 | 424 | 4 | 0.9 |

¹Women's correctional facility.

²Los Angeles County health centers.

³Family planning facility.

[^]Includes values for missing gender.

*Due to a shortage of test reagents, the number of chlamydia and gonorrhea tests may differ.

Table 3a. Chlamydia positivity among females by age, LA County, LACIPP Sentinel Sites, 2005.

| LACIPP Sentinel Site | 10-14 | | | 15-19 | | | 20-24 | | | 25-29 | | |
|---|-------|--------------|------------|-------|--------------|------------|-------|--------------|------------|--------|--------------|------------|
| | Total | (N) Positive | % Positive | Total | (N) Positive | % Positive | Total | (N) Positive | % Positive | Total | (N) Positive | % Positive |
| All Sites-Female | 696 | 104 | 14.9 | 8,234 | 1,462 | 17.8 | 7,024 | 1,030 | 14.7 | 4,571 | 451 | 9.9 |
| <u>Correctional Facilities</u> | | | | | | | | | | | | |
| Twin Towers II ¹ | 0 | 0 | 0.0 | 660 | 150 | 22.7 | 2,041 | 332 | 16.3 | 1,676 | 200 | 11.9 |
| Central Juvenile Hall | 199 | 25 | 12.6 | 1613 | 229 | 14.2 | 9 | 1 | 11.1 | 0 | 0 | 0.0 |
| Los Padriños Juvenile Hall | 278 | 33 | 11.9 | 1,643 | 328 | 20.0 | 6 | 1 | 16.7 | 0 | 0 | 0.0 |
| San Fernando Juvenile Hall | 119 | 17 | 14.3 | 1,097 | 141 | 12.9 | 5 | 1 | 20.0 | 0 | 0 | 0.0 |
| <u>Schools/Colleges</u> | | | | | | | | | | | | |
| Cal State Dominguez Hills | 0 | 0 | 0.0 | 92 | 5 | 5.4 | 237 | 17 | 7.2 | 118 | 1 | 0.8 |
| College of the Canyons | 0 | 0 | 0.0 | 147 | 5 | 3.4 | 121 | 12 | 9.9 | 28 | 1 | 3.6 |
| East LA College | 0 | 0 | 0.0 | 30 | 0 | 0.0 | 50 | 2 | 4.0 | 29 | 0 | 0.0 |
| El Camino College | 0 | 0 | 0.0 | 50 | 4 | 8.0 | 52 | 2 | 3.8 | 22 | 0 | 0.0 |
| LA Trade Tech College | 0 | 0 | 0.0 | 3 | 0 | 0.0 | 6 | 0 | 0.0 | 2 | 0 | 0.0 |
| Pasadena City College | 0 | 0 | 0.0 | 64 | 1 | 1.6 | 182 | 10 | 5.5 | 45 | 1 | 2.2 |
| Jordan High School | 11 | 0 | 0.0 | 116 | 13 | 11.2 | 0 | 0 | 0.0 | 1 | 0 | 0.0 |
| San Fernando High School | 28 | 3 | 10.7 | 350 | 8 | 2.3 | 0 | 0 | 0.0 | 1 | 0 | 0.0 |
| <u>Health Facilities</u> | | | | | | | | | | | | |
| Antelope Valley Health Center ² | 8 | 3 | 37.5 | 85 | 26 | 30.6 | 89 | 16 | 18.0 | 38 | 7 | 18.4 |
| Burke Health Center ² | 0 | 0 | 0.0 | 15 | 3 | 20.0 | 52 | 4 | 7.7 | 51 | 4 | 7.8 |
| Central Health Center ² | 2 | 2 | 100.0 | 121 | 25 | 20.7 | 240 | 50 | 20.8 | 180 | 20 | 11.1 |
| Curtis Tucker Health Center ² | 3 | 1 | 33.3 | 279 | 72 | 25.8 | 423 | 63 | 14.9 | 285 | 27 | 9.5 |
| Glendale Health Center ² | 0 | 0 | 0.0 | 25 | 7 | 28.0 | 57 | 7 | 12.3 | 38 | 4 | 10.5 |
| Hollywood-Wilshire Health Center ² | 1 | 0 | 0.0 | 70 | 15 | 21.4 | 168 | 26 | 15.5 | 144 | 13 | 9.0 |
| Monrovia Health Center ² | 2 | 0 | 0.0 | 116 | 38 | 32.8 | 220 | 52 | 23.6 | 125 | 20 | 16.0 |
| North Hollywood Health Center ² | 2 | 1 | 50.0 | 64 | 15 | 23.4 | 118 | 28 | 23.7 | 79 | 6 | 7.6 |
| Pacoima Health Center ² | 2 | 1 | 50.0 | 17 | 2 | 11.8 | 36 | 5 | 13.9 | 37 | 2 | 5.4 |
| Pomona Health Center ² | 2 | 1 | 50.0 | 70 | 29 | 41.4 | 118 | 31 | 26.3 | 51 | 7 | 13.7 |
| Ruth Temple Health Center ² | 15 | 9 | 60.0 | 449 | 125 | 27.8 | 752 | 92 | 12.2 | 397 | 41 | 10.3 |
| South Health Center ² | 18 | 8 | 44.4 | 374 | 123 | 32.9 | 561 | 141 | 25.1 | 402 | 57 | 14.2 |
| Torrance Health Center ² | 0 | 0 | 0.0 | 56 | 24 | 42.9 | 96 | 15 | 15.6 | 33 | 0 | 0.0 |
| Whittier Health Center ² | 1 | 0 | 0.0 | 185 | 47 | 25.4 | 324 | 60 | 18.5 | 127 | 19 | 15.0 |
| Harbor/UCLA ³ | 5 | 0 | 0.0 | 443 | 27 | 6.1 | 1,061 | 62 | 5.8 | 662 | 21 | 3.2 |
| <u>30-34</u> | | | | | | | | | | | | |
| <u>35-39</u> | | | | | | | | | | | | |
| <u>40+</u> | | | | | | | | | | | | |
| <u>Total*</u> | | | | | | | | | | | | |
| All Sites-Female | 2,173 | 112 | 5.2 | 1,634 | 58 | 3.5 | 2,922 | 61 | 2.1 | 27,290 | 3,279 | 12.0 |
| <u>Correctional Facilities</u> | | | | | | | | | | | | |
| Twin Towers II ¹ | 362 | 31 | 8.6 | 144 | 7 | 4.9 | 320 | 17 | 5.3 | 5,223 | 738 | 14.1 |
| Central Juvenile Hall | 0 | 0 | 0.0 | 0 | 0 | 0.0 | 0 | 0 | 0.0 | 1,821 | 255 | 14.0 |
| Los Padriños Juvenile Hall | 0 | 0 | 0.0 | 0 | 0 | 0.0 | 0 | 0 | 0.0 | 1,927 | 362 | 18.8 |
| San Fernando Juvenile Hall | 0 | 0 | 0.0 | 0 | 0 | 0.0 | 0 | 0 | 0.0 | 1,221 | 159 | 13.0 |
| <u>Schools/Colleges</u> | | | | | | | | | | | | |
| Cal State Dominguez Hills | 34 | 0 | 0.0 | 18 | 0 | 0.0 | 21 | 0 | 0.0 | 520 | 23 | 4.4 |
| College of the Canyons | 2 | 0 | 0.0 | 9 | 0 | 0.0 | 7 | 0 | 0.0 | 316 | 18 | 5.7 |
| East LA College | 20 | 0 | 0.0 | 18 | 0 | 0.0 | 16 | 0 | 0.0 | 163 | 2 | 1.2 |
| El Camino College | 3 | 0 | 0.0 | 2 | 0 | 0.0 | 5 | 0 | 0.0 | 135 | 6 | 4.4 |
| LA Trade Tech College | 0 | 0 | 0.0 | 0 | 0 | 0.0 | 0 | 0 | 0.0 | 12 | 0 | 0.0 |
| Pasadena City College | 3 | 0 | 0.0 | 1 | 0 | 0.0 | 0 | 0 | 0.0 | 295 | 12 | 4.1 |
| Jordan High School | 0 | 0 | 0.0 | 0 | 0 | 0.0 | 0 | 0 | 0.0 | 128 | 13 | 10.2 |
| San Fernando High School | 0 | 0 | 0.0 | 0 | 0 | 0.0 | 0 | 0 | 0.0 | 380 | 11 | 2.9 |
| <u>Health Facilities</u> | | | | | | | | | | | | |
| Antelope Valley Health Center ² | 33 | 1 | 3.0 | 23 | 1 | 4.3 | 29 | 1 | 3.4 | 305 | 55 | 18.0 |
| Burke Health Center ² | 20 | 2 | 10.0 | 14 | 2 | 14.3 | 26 | 0 | 0.0 | 178 | 15 | 8.4 |
| Central Health Center ² | 167 | 11 | 6.6 | 127 | 8 | 6.3 | 279 | 3 | 1.1 | 1,116 | 119 | 10.7 |
| Curtis Tucker Health Center ² | 173 | 6 | 3.5 | 201 | 16 | 8.0 | 329 | 7 | 2.1 | 1,693 | 192 | 11.3 |
| Glendale Health Center ² | 15 | 0 | 0.0 | 17 | 0 | 0.0 | 37 | 1 | 2.7 | 189 | 19 | 10.1 |
| Hollywood-Wilshire Health Center ² | 92 | 9 | 9.8 | 80 | 3 | 3.8 | 121 | 1 | 0.8 | 676 | 67 | 9.9 |
| Monrovia Health Center ² | 72 | 2 | 2.8 | 60 | 2 | 3.3 | 125 | 6 | 4.8 | 720 | 120 | 16.7 |
| North Hollywood Health Center ² | 39 | 1 | 2.6 | 23 | 2 | 8.7 | 49 | 3 | 6.1 | 374 | 56 | 15.0 |
| Pacoima Health Center ² | 36 | 1 | 2.8 | 30 | 1 | 3.3 | 55 | 0 | 0.0 | 213 | 12 | 5.6 |
| Pomona Health Center ² | 38 | 2 | 5.3 | 28 | 0 | 0.0 | 70 | 3 | 4.3 | 377 | 73 | 19.4 |
| Ruth Temple Health Center ² | 302 | 26 | 8.6 | 238 | 7 | 2.9 | 521 | 6 | 1.2 | 2,674 | 306 | 11.4 |
| South Health Center ² | 234 | 8 | 3.4 | 233 | 4 | 1.7 | 441 | 6 | 1.4 | 2,263 | 347 | 15.3 |
| Torrance Health Center ² | 29 | 2 | 6.9 | 26 | 3 | 11.5 | 57 | 1 | 1.8 | 297 | 45 | 15.2 |
| Whittier Health Center ² | 102 | 2 | 2.0 | 78 | 2 | 2.6 | 149 | 3 | 2.0 | 968 | 133 | 13.7 |
| Harbor/UCLA ³ | 397 | 8 | 2.0 | 264 | 0 | 0.0 | 265 | 3 | 1.1 | 3,106 | 121 | 3.9 |

¹Women's correctional facility.

²Los Angeles County health centers

³Family planning facility.

*Includes missing values for age group.

Table 3b. Chlamydia positivity among males by age, LA County, LACIPP Sentinel Sites, 2005.

| LACIPP Sentinel Site | 10-14 | | | 15-19 | | | 20-24 | | | 25-29 | | |
|---|-------|--------------|------------|--------|--------------|------------|-------|--------------|------------|--------|--------------|------------|
| | Total | (N) Positive | % Positive | Total | (N) Positive | % Positive | Total | (N) Positive | % Positive | Total | (N) Positive | % Positive |
| All Sites-Male | 1,762 | 32 | 1.8 | 16,566 | 1,195 | 7.2 | 5,198 | 899 | 17.3 | 4,441 | 544 | 12.2 |
| Correctional Facilities | | | | | | | | | | | | |
| Twin Towers II ¹ | | N/A | | | N/A | | | N/A | | | N/A | |
| Central Juvenile Hall | 452 | 7 | 1.5 | 4,611 | 222 | 4.8 | 14 | 0 | 0.0 | 0 | 0 | 0.0 |
| Los Padrinos Juvenile Hall | 860 | 20 | 2.3 | 6,728 | 422 | 6.3 | 24 | 1 | 4.2 | 0 | 0 | 0.0 |
| San Fernando Juvenile Hall | 424 | 2 | 0.5 | 3,492 | 154 | 4.4 | 16 | 2 | 12.5 | 0 | 0 | 0.0 |
| Schools/Colleges | | | | | | | | | | | | |
| Cal State Dominguez Hills | 0 | 0 | 0.0 | 39 | 2 | 5.1 | 99 | 5 | 5.1 | 35 | 0 | 0.0 |
| College of the Canyons | 0 | 0 | 0.0 | 30 | 3 | 10.0 | 50 | 7 | 14.0 | 11 | 0 | 0.0 |
| East LA College | 0 | 0 | 0.0 | 11 | 0 | 0.0 | 41 | 0 | 0.0 | 9 | 0 | 0.0 |
| El Camino College | 0 | 0 | 0.0 | 29 | 1 | 3.4 | 44 | 4 | 9.1 | 9 | 1 | 11.1 |
| LA Trade Tech College | 0 | 0 | 0.0 | 2 | 0 | 0.0 | 3 | 1 | 33.3 | 1 | 0 | 0.0 |
| Pasadena City College | 0 | 0 | 0.0 | 31 | 2 | 6.5 | 81 | 5 | 6.2 | 29 | 1 | 3.4 |
| Jordan High School | 0 | 0 | 0.0 | 3 | 0 | 0.0 | 0 | 0 | 0.0 | 0 | 0 | 0.0 |
| San Fernando High School | 10 | 0 | 0.0 | 51 | 1 | 2.0 | 5 | 0 | 0.0 | 0 | 0 | 0.0 |
| Health Facilities | | | | | | | | | | | | |
| Antelope Valley Health Center ² | 1 | 0 | 0.0 | 49 | 15 | 30.6 | 142 | 45 | 31.7 | 66 | 13 | 19.7 |
| Burke Health Center ² | 0 | 0 | 0.0 | 15 | 5 | 33.3 | 117 | 7 | 6.0 | 125 | 6 | 4.8 |
| Central Health Center ² | 3 | 0 | 0.0 | 134 | 12 | 9.0 | 460 | 63 | 13.7 | 499 | 35 | 7.0 |
| Curtis Tucker Health Center ² | 2 | 1 | 50.0 | 167 | 56 | 33.5 | 585 | 125 | 21.4 | 529 | 84 | 15.9 |
| Glendale Health Center ² | 0 | 0 | 0.0 | 27 | 4 | 14.8 | 127 | 17 | 13.4 | 118 | 8 | 6.8 |
| Hollywood-Wilshire Health Center ² | 0 | 0 | 0.0 | 102 | 10 | 9.8 | 466 | 27 | 5.8 | 628 | 60 | 9.6 |
| Monrovia Health Center ² | 1 | 0 | 0.0 | 129 | 18 | 14.0 | 332 | 65 | 19.6 | 240 | 32 | 13.3 |
| North Hollywood Health Center ² | 0 | 0 | 0.0 | 42 | 9 | 21.4 | 239 | 37 | 15.5 | 249 | 18 | 7.2 |
| Pacoima Health Center ² | 0 | 0 | 0.0 | 19 | 0 | 0.0 | 118 | 18 | 15.3 | 86 | 11 | 12.8 |
| Pomona Health Center ² | 1 | 0 | 0.0 | 72 | 19 | 26.4 | 192 | 39 | 20.3 | 117 | 17 | 14.5 |
| Ruth Temple Health Center ² | 6 | 1 | 16.7 | 256 | 87 | 34.0 | 680 | 129 | 19.0 | 549 | 81 | 14.8 |
| South Health Center ² | 1 | 1 | 100.0 | 275 | 99 | 36.0 | 605 | 164 | 27.1 | 542 | 96 | 17.7 |
| Torrance Health Center ² | 0 | 0 | 0.0 | 45 | 8 | 17.8 | 116 | 26 | 22.4 | 125 | 20 | 16.0 |
| Whittier Health Center ² | 1 | 0 | 0.0 | 172 | 42 | 24.4 | 556 | 101 | 18.2 | 404 | 55 | 13.6 |
| Harbor/UCLA ³ | 0 | 0 | 0.0 | 35 | 4 | 11.4 | 86 | 11 | 12.8 | 70 | 6 | 8.6 |
| | | | | | | | | | | | | |
| LACIPP Sentinel Site | 30-34 | | | 35-39 | | | 40+ | | | Total* | | |
| | Total | (N) Positive | % Positive | Total | (N) Positive | % Positive | Total | (N) Positive | % Positive | Total | (N) Positive | % Positive |
| All Sites-Male | 3,336 | 293 | 8.8 | 2,680 | 180 | 6.7 | 4,869 | 202 | 4.1 | 38,857 | 3,345 | 8.6 |
| Correctional Facilities | | | | | | | | | | | | |
| Twin Towers II ¹ | | N/A | | | N/A | | | N/A | | | N/A | |
| Central Juvenile Hall | 0 | 0 | 0.0 | 0 | 0 | 0.0 | 0 | 0 | 0.0 | 5,077 | 229 | 4.5 |
| Los Padrinos Juvenile Hall | 0 | 0 | 0.0 | 0 | 0 | 0.0 | 0 | 0 | 0.0 | 7,612 | 443 | 5.8 |
| San Fernando Juvenile Hall | 0 | 0 | 0.0 | 0 | 0 | 0.0 | 0 | 0 | 0.0 | 3,932 | 158 | 4.0 |
| Schools/Colleges | | | | | | | | | | | | |
| Cal State Dominguez Hills | 15 | 0 | 0.0 | 9 | 0 | 0.0 | 12 | 0 | 0.0 | 209 | 7 | 3.3 |
| College of the Canyons | 0 | 0 | 0.0 | 0 | 0 | 0.0 | 0 | 0 | 0.0 | 91 | 10 | 11.0 |
| East LA College | 11 | 0 | 0.0 | 4 | 0 | 0.0 | 4 | 0 | 0.0 | 80 | 0 | 0.0 |
| El Camino College | 6 | 2 | 33.3 | 4 | 0 | 0.0 | 4 | 0 | 0.0 | 96 | 8 | 8.3 |
| LA Trade Tech College | 3 | 0 | 0.0 | 1 | 0 | 0.0 | 1 | 0 | 0.0 | 11 | 1 | 9.1 |
| Pasadena City College | 1 | 0 | 0.0 | 1 | 0 | 0.0 | 0 | 0 | 0.0 | 144 | 8 | 5.6 |
| Jordan High School | 0 | 0 | 0.0 | 0 | 0 | 0.0 | 0 | 0 | 0.0 | 3 | 0 | 0.0 |
| San Fernando High School | 0 | 0 | 0.0 | 0 | 0 | 0.0 | 0 | 0 | 0.0 | 66 | 1 | 1.5 |
| Health Facilities | | | | | | | | | | | | |
| Antelope Valley Health Center ² | 31 | 2 | 6.5 | 26 | 2 | 7.7 | 37 | 0 | 0.0 | 353 | 77 | 21.8 |
| Burke Health Center ² | 117 | 4 | 3.4 | 53 | 3 | 5.7 | 110 | 8 | 7.3 | 538 | 33 | 6.1 |
| Central Health Center ² | 499 | 30 | 6.0 | 425 | 20 | 4.7 | 775 | 25 | 3.2 | 2,795 | 185 | 6.6 |
| Curtis Tucker Health Center ² | 356 | 42 | 11.8 | 331 | 35 | 10.6 | 571 | 22 | 3.9 | 2,541 | 365 | 14.4 |
| Glendale Health Center ² | 82 | 5 | 6.1 | 61 | 1 | 1.6 | 81 | 3 | 3.7 | 496 | 38 | 7.7 |
| Hollywood-Wilshire Health Center ² | 513 | 29 | 5.7 | 436 | 24 | 5.5 | 626 | 26 | 4.2 | 2,771 | 176 | 6.4 |
| Monrovia Health Center ² | 194 | 23 | 11.9 | 145 | 5 | 3.4 | 242 | 7 | 2.9 | 1,283 | 150 | 11.7 |
| North Hollywood Health Center ² | 160 | 19 | 11.9 | 105 | 7 | 6.7 | 181 | 11 | 6.1 | 976 | 101 | 10.3 |
| Pacoima Health Center ² | 81 | 8 | 9.9 | 66 | 2 | 3.0 | 122 | 5 | 4.1 | 492 | 44 | 8.9 |
| Pomona Health Center ² | 89 | 3 | 3.4 | 69 | 7 | 10.1 | 147 | 7 | 4.8 | 687 | 92 | 13.4 |
| Ruth Temple Health Center ² | 448 | 56 | 12.5 | 398 | 35 | 8.8 | 872 | 31 | 3.6 | 3,209 | 420 | 13.1 |
| South Health Center ² | 390 | 45 | 11.5 | 283 | 27 | 9.5 | 655 | 35 | 5.3 | 2,751 | 467 | 17.0 |
| Torrance Health Center ² | 89 | 7 | 7.9 | 61 | 2 | 3.3 | 91 | 11 | 12.1 | 527 | 74 | 14.0 |
| Whittier Health Center ² | 185 | 17 | 9.2 | 137 | 9 | 6.6 | 237 | 11 | 4.6 | 1,693 | 235 | 13.9 |
| Harbor/UCLA ³ | 66 | 1 | 1.5 | 65 | 1 | 1.5 | 101 | 0 | 0.0 | 424 | 23 | 5.4 |

¹Women's correctional facility.

²Los Angeles County health centers.

³Family planning facility.

*Includes missing values for age group.

Table 4a. Gonorrhea positivity among females by age, LA County, LACIPP Sentinel Sites, 2005.

| LACIPP Sentinel Site | 10-14 | | | 15-19 | | | 20-24 | | | 25-29 | | |
|---|-------|----------|----------|-------|----------|----------|-------|----------|----------|--------|----------|----------|
| | Total | (N) % | | Total | (N) % | | Total | (N) % | | Total | (N) % | |
| | | Positive | Positive | | Positive | Positive | | Positive | Positive | | | |
| All Sites-Female | 697 | 30 | 4.3 | 8,260 | 447 | 5.4 | 7,050 | 318 | 4.5 | 4,585 | 139 | 3.0 |
| <u>Correctional Facilities</u> | | | | | | | | | | | | |
| Twin Towers II ¹ | 0 | 0 | 0.0 | 660 | 49 | 7.4 | 2,041 | 107 | 5.2 | 1,676 | 74 | 4.4 |
| Central Juvenile Hall | 199 | 2 | 1.0 | 1,628 | 74 | 4.5 | 9 | 0 | 0.0 | 0 | 0 | 0.0 |
| Los Padrinos Juvenile Hall | 278 | 16 | 5.8 | 1,643 | 107 | 6.5 | 7 | 0 | 0.0 | 0 | 0 | 0.0 |
| San Fernando Juvenile Hall | 120 | 6 | 5.0 | 1,098 | 43 | 3.9 | 5 | 0 | 0.0 | 0 | 0 | 0.0 |
| <u>Schools/Colleges</u> | | | | | | | | | | | | |
| Cal State Dominguez Hills | 0 | 0 | 0.0 | 92 | 1 | 1.1 | 237 | 3 | 1.3 | 118 | 0 | 0.0 |
| College of the Canyons | 0 | 0 | 0.0 | 147 | 0 | 0.0 | 121 | 0 | 0.0 | 28 | 0 | 0.0 |
| East LA College | 0 | 0 | 0.0 | 30 | 0 | 0.0 | 50 | 0 | 0.0 | 29 | 0 | 0.0 |
| El Camino College | 0 | 0 | 0.0 | 50 | 1 | 2.0 | 52 | 0 | 0.0 | 22 | 0 | 0.0 |
| LA Trade Tech College | 0 | 0 | 0.0 | 3 | 0 | 0.0 | 6 | 0 | 0.0 | 2 | 0 | 0.0 |
| Pasadena City College | 0 | 0 | 0.0 | 64 | 0 | 0.0 | 182 | 0 | 0.0 | 45 | 0 | 0.0 |
| Jordan High School | 11 | 0 | 0.0 | 116 | 2 | 1.7 | 0 | 0 | 0.0 | 0 | 0 | 0.0 |
| San Fernando High School | 28 | 0 | 0.0 | 350 | 0 | 0.0 | 0 | 0 | 0.0 | 1 | 0 | 0.0 |
| <u>Health Facilities</u> | | | | | | | | | | | | |
| Antelope Valley Health Center ² | 8 | 1 | 12.5 | 86 | 9 | 10.5 | 89 | 9 | 10.1 | 38 | 2 | 5.3 |
| Burke Health Center ² | 0 | 0 | 0.0 | 15 | 0 | 0.0 | 51 | 1 | 2.0 | 51 | 1 | 2.0 |
| Central Health Center ² | 2 | 2 | 100.0 | 117 | 14 | 12.0 | 240 | 9 | 3.8 | 179 | 2 | 1.1 |
| Curtis Tucker Health Center ² | 3 | 1 | 33.3 | 282 | 23 | 8.2 | 434 | 32 | 7.4 | 288 | 9 | 3.1 |
| Glendale Health Center ² | 0 | 0 | 0.0 | 25 | 1 | 4.0 | 58 | 1 | 1.7 | 38 | 1 | 2.6 |
| Hollywood-Wilshire Health Center ² | 1 | 0 | 0.0 | 70 | 3 | 4.3 | 168 | 4 | 2.4 | 144 | 1 | 0.7 |
| Monrovia Health Center ² | 2 | 0 | 0.0 | 116 | 2 | 1.7 | 218 | 6 | 2.8 | 126 | 0 | 0.0 |
| North Hollywood Health Center ² | 2 | 0 | 0.0 | 64 | 7 | 10.9 | 119 | 5 | 4.2 | 79 | 1 | 1.3 |
| Pacoima Health Center ² | 2 | 1 | 50.0 | 19 | 0 | 0.0 | 35 | 0 | 0.0 | 39 | 1 | 2.6 |
| Pomona Health Center ² | 2 | 0 | 0.0 | 70 | 1 | 1.4 | 118 | 7 | 5.9 | 51 | 0 | 0.0 |
| Ruth Temple Health Center ² | 15 | 1 | 6.7 | 455 | 49 | 10.8 | 758 | 43 | 5.7 | 403 | 19 | 4.7 |
| South Health Center ² | 18 | 0 | 0.0 | 374 | 47 | 12.6 | 564 | 57 | 10.1 | 401 | 19 | 4.7 |
| Torrance Health Center ² | 0 | 0 | 0.0 | 58 | 2 | 3.4 | 97 | 6 | 6.2 | 33 | 0 | 0.0 |
| Whittier Health Center ² | 1 | 0 | 0.0 | 185 | 7 | 3.8 | 330 | 23 | 7.0 | 132 | 5 | 3.8 |
| Harbor/UCLA ³ | 5 | 0 | 0.0 | 443 | 5 | 1.1 | 1,061 | 5 | 0.5 | 662 | 4 | 0.6 |
| <u>LACIPP Sentinel Site</u> | | | | | | | | | | | | |
| | 30-34 | | | 35-39 | | | 40+ | | | Total* | | |
| | Total | (N) % | | Total | (N) % | | Total | (N) % | | Total | (N) % | |
| | | Positive | Positive | | Positive | Positive | | Positive | Positive | | Positive | Positive |
| All Sites-Female | 2,185 | 52 | 2.4 | 1,635 | 37 | 2.3 | 2,938 | 45 | 1.5 | 27,387 | 1,068 | 3.9 |
| <u>Correctional Facilities</u> | | | | | | | | | | | | |
| Twin Towers II ¹ | 362 | 25 | 6.9 | 144 | 5 | 3.5 | 320 | 13 | 4.1 | 5,223 | 273 | 5.2 |
| Central Juvenile Hall | 0 | 0 | 0.0 | 0 | 0 | 0.0 | 0 | 0 | 0.0 | 1,836 | 76 | 4.1 |
| Los Padrinos Juvenile Hall | 0 | 0 | 0.0 | 0 | 0 | 0.0 | 0 | 0 | 0.0 | 1,928 | 123 | 6.4 |
| San Fernando Juvenile Hall | 0 | 0 | 0.0 | 0 | 0 | 0.0 | 0 | 0 | 0.0 | 1,223 | 49 | 4.0 |
| <u>Schools/Colleges</u> | | | | | | | | | | | | |
| Cal State Dominguez Hills | 34 | 0 | 0.0 | 18 | 0 | 0.0 | 21 | 0 | 0.0 | 520 | 4 | 0.8 |
| College of the Canyons | 2 | 0 | 0.0 | 9 | 0 | 0.0 | 7 | 0 | 0.0 | 316 | 0 | 0.0 |
| East LA College | 20 | 0 | 0.0 | 18 | 0 | 0.0 | 16 | 0 | 0.0 | 163 | 0 | 0.0 |
| El Camino College | 3 | 0 | 0.0 | 2 | 0 | 0.0 | 5 | 0 | 0.0 | 135 | 1 | 0.7 |
| LA Trade Tech College | 0 | 0 | 0.0 | 0 | 0 | 0.0 | 0 | 0 | 0.0 | 12 | 0 | 0.0 |
| Pasadena City College | 3 | 0 | 0.0 | 1 | 0 | 0.0 | 0 | 0 | 0.0 | 295 | 0 | 0.0 |
| Jordan High School | 0 | 0 | 0.0 | 0 | 0 | 0.0 | 0 | 0 | 0.0 | 128 | 2 | 1.6 |
| San Fernando High School | 0 | 0 | 0.0 | 0 | 0 | 0.0 | 0 | 0 | 0.0 | 380 | 0 | 0.0 |
| <u>Health Facilities</u> | | | | | | | | | | | | |
| Antelope Valley Health Center ² | 33 | 1 | 3.0 | 23 | 1 | 4.3 | 29 | 2 | 6.9 | 306 | 25 | 8.2 |
| Burke Health Center ² | 20 | 0 | 0.0 | 14 | 0 | 0.0 | 28 | 1 | 3.6 | 179 | 3 | 1.7 |
| Central Health Center ² | 166 | 6 | 3.6 | 127 | 2 | 1.6 | 279 | 2 | 0.7 | 1,110 | 37 | 3.3 |
| Curtis Tucker Health Center ² | 175 | 2 | 1.1 | 203 | 6 | 3.0 | 333 | 1 | 0.3 | 1,718 | 74 | 4.3 |
| Glendale Health Center ² | 15 | 0 | 0.0 | 17 | 0 | 0.0 | 37 | 0 | 0.0 | 190 | 3 | 1.6 |
| Hollywood-Wilshire Health Center ² | 92 | 0 | 0.0 | 79 | 3 | 3.8 | 122 | 1 | 0.8 | 676 | 12 | 1.8 |
| Monrovia Health Center ² | 71 | 2 | 2.8 | 59 | 2 | 3.4 | 126 | 0 | 0.0 | 718 | 12 | 1.7 |
| North Hollywood Health Center ² | 39 | 0 | 0.0 | 21 | 0 | 0.0 | 50 | 2 | 4.0 | 374 | 15 | 4.0 |
| Pacoima Health Center ² | 37 | 0 | 0.0 | 32 | 0 | 0.0 | 60 | 1 | 1.7 | 224 | 3 | 1.3 |
| Pomona Health Center ² | 38 | 0 | 0.0 | 28 | 0 | 0.0 | 70 | 0 | 0.0 | 377 | 8 | 2.1 |
| Ruth Temple Health Center ² | 309 | 9 | 2.9 | 238 | 9 | 3.8 | 523 | 8 | 1.5 | 2,701 | 138 | 5.1 |
| South Health Center ² | 237 | 7 | 3.0 | 233 | 8 | 3.4 | 442 | 11 | 2.5 | 2,269 | 149 | 6.6 |
| Torrance Health Center ² | 29 | 0 | 0.0 | 27 | 0 | 0.0 | 56 | 0 | 0.0 | 300 | 8 | 2.7 |
| Whittier Health Center ² | 103 | 0 | 0.0 | 78 | 0 | 0.0 | 149 | 3 | 2.0 | 980 | 38 | 3.9 |
| Harbor/UCLA ³ | 397 | 0 | 0.0 | 264 | 1 | 0.4 | 265 | 0 | 0.0 | 3,106 | 15 | 0.5 |

¹Women's correctional facility.

²Los Angeles County health centers.

³Family planning facility.

*Includes missing values for age group.

Table 4b. Gonorrhea positivity among males by age, LA County, LACIPP Sentinel Sites, 2005.

| LACIPP Sentinel Site | 10-14 | | | 15-19 | | | 20-24 | | | 25-29 | | |
|---|--------------|--------------|------------|--------------|--------------|------------|------------|--------------|------------|---------------|--------------|------------|
| | Total | (N) Positive | % Positive | Total | (N) Positive | % Positive | Total | (N) Positive | % Positive | Total | (N) Positive | % Positive |
| All Sites-Male | 1,763 | 6 | 0.3 | 16,603 | 360 | 2.2 | 5,225 | 431 | 8.2 | 4,483 | 368 | 8.2 |
| Correctional Facility | | | | | | | | | | | | |
| Twin Towers II ¹ | | N/A | | | N/A | | | N/A | | | N/A | |
| Central Juvenile Hall | 453 | 0 | 0.0 | 4,636 | 36 | 0.8 | 14 | 0 | 0.0 | 0 | 0 | 0.0 |
| Los Padrinos Juvenile Hall | 860 | 4 | 0.5 | 6,729 | 69 | 1.0 | 24 | 1 | 4.2 | 0 | 0 | 0.0 |
| San Fernando Juvenile Hall | 424 | 1 | 0.2 | 3,494 | 20 | 0.6 | 16 | 0 | 0.0 | 0 | 0 | 0.0 |
| Schools/Colleges | | | | | | | | | | | | |
| Cal State Dominguez Hills | 0 | 0 | 0.0 | 39 | 0 | 0.0 | 99 | 1 | 1.0 | 35 | 0 | 0.0 |
| College of the Canyons | 0 | 0 | 0.0 | 30 | 0 | 0.0 | 50 | 1 | 2.0 | 11 | 0 | 0.0 |
| East LA College | 0 | 0 | 0.0 | 11 | 0 | 0.0 | 41 | 0 | 0.0 | 9 | 0 | 0.0 |
| El Camino College | 0 | 0 | 0.0 | 29 | 2 | 6.9 | 44 | 0 | 0.0 | 9 | 1 | 11.1 |
| LA Trade Tech College | 0 | 0 | 0.0 | 2 | 0 | 0.0 | 3 | 0 | 0.0 | 1 | 0 | 0.0 |
| Pasadena City College | 0 | 0 | 0.0 | 31 | 0 | 0.0 | 81 | 0 | 0.0 | 29 | 1 | 3.4 |
| Jordan High School | 0 | 0 | 0.0 | 3 | 0 | 0.0 | 0 | 0 | 0.0 | 0 | 0 | 0.0 |
| San Fernando High School | 10 | 0 | 0.0 | 51 | 0 | 0.0 | 5 | 1 | 20.0 | 0 | 0 | 0.0 |
| Health Facilities | | | | | | | | | | | | |
| Antelope Valley Health Center ² | 1 | 0 | 0.0 | 50 | 2 | 4.0 | 142 | 12 | 8.5 | 66 | 6 | 9.1 |
| Burke Health Center ² | 0 | 0 | 0.0 | 15 | 0 | 0.0 | 117 | 2 | 1.7 | 125 | 2 | 1.6 |
| Central Health Center ² | 3 | 0 | 0.0 | 137 | 9 | 6.6 | 463 | 20 | 4.3 | 506 | 25 | 4.9 |
| Curtis Tucker Health Center ² | 2 | 0 | 0.0 | 167 | 32 | 19.2 | 586 | 60 | 10.2 | 540 | 44 | 8.1 |
| Glendale Health Center ² | 0 | 0 | 0.0 | 27 | 1 | 3.7 | 127 | 0 | 0.0 | 119 | 4 | 3.4 |
| Hollywood-Wilshire Health Center ² | 0 | 0 | 0.0 | 102 | 8 | 7.8 | 465 | 30 | 6.5 | 627 | 55 | 8.8 |
| Monrovia Health Center ² | 1 | 0 | 0.0 | 123 | 8 | 6.5 | 333 | 17 | 5.1 | 242 | 6 | 2.5 |
| North Hollywood Health Center ² | 0 | 0 | 0.0 | 42 | 1 | 2.4 | 240 | 18 | 7.5 | 248 | 19 | 7.7 |
| Pacoima Health Center ² | 0 | 0 | 0.0 | 19 | 1 | 5.3 | 119 | 8 | 6.7 | 87 | 6 | 6.9 |
| Pomona Health Center ² | 1 | 0 | 0.0 | 72 | 6 | 8.3 | 192 | 7 | 3.6 | 119 | 0 | 0.0 |
| Ruth Temple Health Center ² | 6 | 0 | 0.0 | 265 | 48 | 18.1 | 694 | 85 | 12.2 | 565 | 81 | 14.3 |
| South Health Center ² | 1 | 1 | 100.0 | 277 | 105 | 37.9 | 608 | 132 | 21.7 | 543 | 86 | 15.8 |
| Torrance Health Center ² | 0 | 0 | 0.0 | 45 | 5 | 11.1 | 117 | 8 | 6.8 | 124 | 2 | 1.6 |
| Whittier Health Center ² | 1 | 0 | 0.0 | 172 | 7 | 4.1 | 559 | 25 | 4.5 | 408 | 30 | 7.4 |
| Harbor/UCLA ³ | 0 | 0 | 0.0 | 35 | 0 | 0.0 | 86 | 3 | 3.5 | 70 | 0 | 0.0 |
| | 30-34 | | | 35-39 | | | 40+ | | | Total* | | |
| LACIPP Sentinel Site | Total | (N) Positive | % Positive | Total | (N) Positive | % Positive | Total | (N) Positive | % Positive | Total | (N) Positive | % Positive |
| All Sites-Male | 3,356 | 249 | 7.4 | 2,699 | 164 | 6.1 | 4,901 | 295 | 6.0 | 39,035 | 1,873 | 4.8 |
| Correctional Facility | | | | | | | | | | | | |
| Twin Towers II ¹ | | N/A | | | N/A | | | N/A | | | N/A | |
| Central Juvenile Hall | 0 | 0 | 0.0 | 0 | 0 | 0.0 | 0 | 0 | 0.0 | 5,103 | 36 | 0.7 |
| Los Padrinos Juvenile Hall | 0 | 0 | 0.0 | 0 | 0 | 0.0 | 0 | 0 | 0.0 | 7,613 | 74 | 1.0 |
| San Fernando Juvenile Hall | 0 | 0 | 0.0 | 0 | 0 | 0.0 | 0 | 0 | 0.0 | 3,934 | 21 | 0.5 |
| Schools/Colleges | | | | | | | | | | | | |
| Cal State Dominguez Hills | 15 | 0 | 0.0 | 9 | 0 | 0.0 | 12 | 0 | 0.0 | 209 | 1 | 0.5 |
| College of the Canyons | 0 | 0 | 0.0 | 0 | 0 | 0.0 | 0 | 0 | 0.0 | 91 | 1 | 1.1 |
| East LA College | 11 | 0 | 0.0 | 4 | 0 | 0.0 | 4 | 0 | 0.0 | 80 | 0 | 0.0 |
| El Camino College | 6 | 0 | 0.0 | 4 | 0 | 0.0 | 4 | 0 | 0.0 | 96 | 3 | 3.1 |
| LA Trade Tech College | 3 | 0 | 0.0 | 1 | 0 | 0.0 | 1 | 0 | 0.0 | 11 | 0 | 0.0 |
| Pasadena City College | 1 | 0 | 0.0 | 1 | 0 | 0.0 | 0 | 0 | 0.0 | 144 | 1 | 0.7 |
| Jordan High School | 0 | 0 | 0.0 | 0 | 0 | 0.0 | 0 | 0 | 0.0 | 3 | 0 | 0.0 |
| San Fernando High School | 0 | 0 | 0.0 | 0 | 0 | 0.0 | 0 | 0 | 0.0 | 66 | 1 | 1.5 |
| Health Facilities | | | | | | | | | | | | |
| Antelope Valley Health Center ² | 32 | 2 | 6.3 | 26 | 3 | 11.5 | 37 | 0 | 0.0 | 355 | 25 | 7.0 |
| Burke Health Center ² | 117 | 2 | 1.7 | 53 | 2 | 3.8 | 110 | 4 | 3.6 | 538 | 12 | 2.2 |
| Central Health Center ² | 502 | 17 | 3.4 | 430 | 21 | 4.9 | 776 | 41 | 5.3 | 2,817 | 133 | 4.7 |
| Curtis Tucker Health Center ² | 357 | 40 | 11.2 | 334 | 20 | 6.0 | 573 | 31 | 5.4 | 2,559 | 227 | 8.9 |
| Glendale Health Center ² | 81 | 2 | 2.5 | 63 | 1 | 1.6 | 82 | 0 | 0.0 | 499 | 8 | 1.6 |
| Hollywood-Wilshire Health Center ² | 518 | 42 | 8.1 | 438 | 38 | 8.7 | 635 | 49 | 7.7 | 2,785 | 222 | 8.0 |
| Monrovia Health Center ² | 192 | 8 | 4.2 | 145 | 1 | 0.7 | 239 | 3 | 1.3 | 1,275 | 43 | 3.4 |
| North Hollywood Health Center ² | 160 | 3 | 1.9 | 107 | 6 | 5.6 | 180 | 10 | 5.6 | 977 | 57 | 5.8 |
| Pacoima Health Center ² | 82 | 7 | 8.5 | 66 | 3 | 4.5 | 122 | 1 | 0.8 | 495 | 26 | 5.3 |
| Pomona Health Center ² | 89 | 3 | 3.4 | 69 | 2 | 2.9 | 150 | 9 | 6.0 | 692 | 27 | 3.9 |
| Ruth Temple Health Center ² | 454 | 42 | 9.3 | 401 | 24 | 6.0 | 889 | 67 | 7.5 | 3,274 | 347 | 10.6 |
| South Health Center ² | 393 | 71 | 18.1 | 284 | 35 | 12.3 | 658 | 67 | 10.2 | 2,764 | 497 | 18.0 |
| Torrance Health Center ² | 91 | 4 | 4.4 | 62 | 2 | 3.2 | 89 | 5 | 5.6 | 528 | 26 | 4.9 |
| Whittier Health Center ² | 186 | 5 | 2.7 | 137 | 6 | 4.4 | 239 | 8 | 3.3 | 1,703 | 81 | 4.8 |
| Harbor/UCLA ³ | 66 | 1 | 1.5 | 65 | 0 | 0.0 | 101 | 0 | 0.0 | 424 | 4 | 0.9 |

¹Women's correctional facility.

²Los Angeles County health centers.

³Family planning facility.

*Includes missing values for age group.

Table 5. Chlamydia and gonorrhea screening of female inmates at Twin Towers Correctional Facility, LACIPP, 2005.

| Characteristic | Total Tested | | Chlamydia Positive | | Gonorrhea Positive | |
|--------------------------------------|--------------|-------|--------------------|------|--------------------|------|
| | N | % | N | % | N | % |
| Total | 5,223 | 100.0 | 738 | 14.1 | 273 | 5.2 |
| Gender | | | | | | |
| Male | 0 | 0.0 | 0 | 0.0 | 0 | 0.0 |
| Female | 5,223 | 100.0 | 738 | 14.1 | 273 | 5.2 |
| Unknown | 0 | 0.0 | 0 | 0.0 | 0 | 0.0 |
| Age group | | | | | | |
| 10-14 | 0 | 0.0 | 0 | 0.0 | 0 | 0.0 |
| 15-19 | 660 | 12.6 | 150 | 22.7 | 49 | 7.4 |
| 20-24 | 2,041 | 39.1 | 332 | 16.3 | 107 | 5.2 |
| 25-29 | 1,676 | 32.1 | 200 | 11.9 | 74 | 4.4 |
| 30-34 | 362 | 6.9 | 31 | 8.6 | 25 | 6.9 |
| 35-39 | 144 | 2.8 | 7 | 4.9 | 5 | 3.5 |
| 40+ | 320 | 6.1 | 17 | 5.3 | 13 | 4.1 |
| Unknown | 20 | 0.4 | 1 | 5.0 | 0 | 0.0 |
| Race/Ethnicity | | | | | | |
| White | 1,116 | 21.4 | 142 | 12.7 | 54 | 4.8 |
| Black | 1,972 | 37.8 | 255 | 12.9 | 118 | 6.0 |
| Asian/Pacific Islander | 119 | 2.3 | 24 | 20.2 | 7 | 5.9 |
| Hispanic | 1,888 | 36.1 | 301 | 15.9 | 89 | 4.7 |
| Am.Ind/N.Alask | 41 | 0.8 | 4 | 9.8 | 2 | 4.9 |
| Other | 77 | 1.5 | 11 | 14.3 | 2 | 2.6 |
| Unknown | 10 | 0.2 | 1 | 10.0 | 1 | 10.0 |
| STD symptoms | | | | | | |
| Yes | 275 | 5.3 | 45 | 16.4 | 17 | 6.2 |
| No | 4,581 | 87.7 | 693 | 15.1 | 256 | 5.6 |
| Unknown | 367 | 7.0 | 0 | 0.0 | 0 | 0.0 |
| Specific symptoms[^] | | | | | | |
| Abn vag discharge | 233 | 4.5 | 37 | 15.9 | 14 | 6.0 |
| Dysuria | 51 | 1.0 | 9 | 17.6 | 3 | 5.9 |
| Pelvic pain | 1 | 0.0 | 0 | 0.0 | 0 | 0.0 |
| Abn vag bleeding | 2 | 0.0 | 1 | 50.0 | 0 | 0.0 |
| Pregnant[^] | | | | | | |
| Yes | 292 | 5.6 | 47 | 16.1 | 14 | 4.8 |
| No | 4,754 | 91.0 | 665 | 14.0 | 250 | 5.3 |
| Possible | 0 | 0.0 | 0 | 0.0 | 0 | 0.0 |
| Unknown | 177 | 3.4 | 26 | 14.7 | 9 | 5.1 |

[^]Numbers may not sum to the total due to non-inclusive categories.

Table 6a. Chlamydia positivity by age, Twin Towers, 2005.

| Twin Towers ¹ Correctional Facility | 10-14 | | | 15-19 | | | 20-24 | | | 25-29 | | |
|---|-------|-----------------|---------------|-------|-----------------|---------------|-------|-----------------|---------------|--------|-----------------|---------------|
| | Total | (N) Positive | % Positive | Total | (N) Positive | % Positive | Total | (N) Positive | % Positive | Total | (N) Positive | % Positive |
| Total | 0 | 0 | 0.0 | 660 | 150 | 22.7 | 2,041 | 332 | 16.3 | 1,676 | 200 | 11.9 |
| Race/Ethnicity | | | | | | | | | | | | |
| White | 0 | 0 | 0.0 | 126 | 33 | 26.2 | 426 | 55 | 12.9 | 375 | 38 | 10.1 |
| Black | 0 | 0 | 0.0 | 295 | 66 | 22.4 | 716 | 114 | 15.9 | 529 | 52 | 9.8 |
| Asian/Pacific Islander | 0 | 0 | 0.0 | 23 | 3 | 13.0 | 57 | 14 | 24.6 | 32 | 6 | 18.8 |
| Hispanic | 0 | 0 | 0.0 | 205 | 44 | 21.5 | 793 | 144 | 18.2 | 692 | 97 | 14.0 |
| Am.Ind/N.Alask | 0 | 0 | 0.0 | 2 | 1 | 50.0 | 12 | 1 | 8.3 | 20 | 2 | 10.0 |
| Other | 0 | 0 | 0.0 | 6 | 3 | 50.0 | 34 | 4 | 11.8 | 25 | 4 | 16.0 |
| Unknown | 0 | 0 | 0.0 | 3 | 0 | 0.0 | 3 | 0 | 0.0 | 3 | 1 | 33.3 |
| Twin Towers ¹ Correctional Facility | 30-34 | | | 35-39 | | | 40+ | | | Total* | | |
| | Total | (N) Positive | % Positive | Total | (N) Positive | % Positive | Total | (N) Positive | % Positive | Total | (N) Positive | % Positive |
| Total | 362 | 31 | 8.6 | 144 | 7 | 4.9 | 320 | 17 | 5.3 | 5,223 | 738 | 14.1 |
| Race/Ethnicity | | | | | | | | | | | | |
| White | 70 | 7 | 10.0 | 38 | 2 | 5.3 | 79 | 7 | 8.9 | 1,116 | 142 | 12.7 |
| Black | 144 | 10 | 6.9 | 81 | 4 | 4.9 | 198 | 9 | 4.5 | 1,972 | 255 | 12.9 |
| Asian/Pacific Islander | 6 | 1 | 16.7 | 0 | 0 | 0.0 | 1 | 0 | 0.0 | 119 | 24 | 20.2 |
| Hispanic | 129 | 13 | 10.1 | 24 | 1 | 4.2 | 38 | 1 | 2.6 | 1,888 | 301 | 15.9 |
| Am.Ind/N.Alask | 2 | 0 | 0.0 | 0 | 0 | 0.0 | 3 | 0 | 0.0 | 41 | 4 | 9.8 |
| Other | 11 | 0 | 0.0 | 1 | 0 | 0.0 | 0 | 0 | 0.0 | 77 | 11 | 14.3 |
| Unknown | 0 | 0 | 0.0 | 0 | 0 | 0.0 | 1 | 0 | 0.0 | 10 | 1 | 10.0 |

¹Women's correctional facility.

*Includes missing values for age group.

Table 6b. Gonorrhea positivity by age, Twin Towers, 2005.

| Twin Towers ¹ Correctional Facility | 10-14 | | | 15-19 | | | 20-24 | | | 25-29 | | |
|---|-------|-----------------|-----------------|-------|-----------------|---------------|-------|-----------------|---------------|--------|-----------------|---------------|
| | Total | (N) Positive | % Positive | Total | (N) Positive | % Positive | Total | (N) Positive | % Positive | Total | (N) Positive | % Positive |
| Total | 0 | 0 | 0.0 | 660 | 49 | 7.4 | 2,041 | 107 | 5.2 | 1,676 | 74 | 4.4 |
| Race/Ethnicity | | | | | | | | | | | | |
| White | 0 | 0 | 0.0 | 126 | 12 | 9.5 | 426 | 19 | 4.5 | 375 | 13 | 3.5 |
| Black | 0 | 0 | 0.0 | 295 | 23 | 7.8 | 716 | 40 | 5.6 | 529 | 31 | 5.9 |
| Asian/Pacific Islander | 0 | 0 | 0.0 | 23 | 0 | 0.0 | 57 | 7 | 12.3 | 32 | 0 | 0.0 |
| Hispanic | 0 | 0 | 0.0 | 205 | 12 | 5.9 | 793 | 40 | 5.0 | 692 | 29 | 4.2 |
| Am.Ind/N.Alask | 0 | 0 | 0.0 | 2 | 1 | 50.0 | 12 | 0 | 0.0 | 20 | 0 | 0.0 |
| Other | 0 | 0 | 0.0 | 6 | 1 | 16.7 | 34 | 1 | 2.9 | 25 | 0 | 0.0 |
| Unknown | 0 | 0 | 0.0 | 3 | 0 | 0.0 | 3 | 0 | 0.0 | 3 | 1 | 33.3 |
| Twin Towers ¹ Correctional Facility | 30-34 | | | 35-39 | | | 40+ | | | Total* | | |
| | Total | (N) Positive | (N) Positive | Total | (N) Positive | % Positive | Total | (N) Positive | % Positive | Total | (N) Positive | % Positive |
| Total | 362 | 25 | 6.9 | 144 | 5 | 3.5 | 320 | 13 | 4.1 | 5,223 | 273 | 5.2 |
| Race/Ethnicity | | | | | | | | | | | | |
| White | 70 | 3 | 4.3 | 38 | 2 | 5.3 | 79 | 5 | 6.3 | 1,116 | 54 | 4.8 |
| Black | 144 | 13 | 9.0 | 81 | 3 | 3.7 | 198 | 8 | 4.0 | 1,972 | 118 | 6.0 |
| Asian/Pacific Islander | 6 | 0 | 0.0 | 0 | 0 | 0.0 | 1 | 0 | 0.0 | 119 | 7 | 5.9 |
| Hispanic | 129 | 8 | 6.2 | 24 | 0 | 0.0 | 38 | 0 | 0.0 | 1,888 | 89 | 4.7 |
| Am.Ind/N.Alask | 2 | 1 | 50.0 | 0 | 0 | 0.0 | 3 | 0 | 0.0 | 41 | 2 | 4.9 |
| Other | 11 | 0 | 0.0 | 1 | 0 | 0.0 | 0 | 0 | 0.0 | 77 | 2 | 2.6 |
| Unknown | 0 | 0 | 0.0 | 0 | 0 | 0.0 | 1 | 0 | 0.0 | 10 | 1 | 10.0 |

¹Women's correctional facility.

*Includes missing values for age group.

Table 7. Chlamydia screening of inmates at Central Juvenile Hall by gender, LACIPP, 2005.

| Characteristic | Total Chlamydia* | | | | Females | | | Males | | |
|--------------------------------------|------------------|-------|---------------|------|-------------|---------------|------|-------------|---------------|------|
| | Tested N | % | Positive N | % | Tested N | Positive N | % | Tested N | Positive N | % |
| Total | 6,899 | 100.0 | 484 | 7.0 | 1,821 | 255 | 14.0 | 5,077 | 229 | 4.5 |
| Age group | | | | | | | | | | |
| 10-14 | 651 | 9.4 | 32 | 4.9 | 199 | 25 | 12.6 | 452 | 7 | 1.5 |
| 15-19 | 6,225 | 90.2 | 451 | 7.2 | 1,613 | 229 | 14.2 | 4,611 | 222 | 4.8 |
| 20-24 | 23 | 0.3 | 1 | 4.3 | 9 | 1 | 11.1 | 14 | 0 | 0.0 |
| Unknown | 0 | 0.0 | 0 | 0.0 | 0 | 0 | 0.0 | 0 | 0 | 0.0 |
| Race/Ethnicity | | | | | | | | | | |
| White | 262 | 3.8 | 12 | 4.6 | 95 | 9 | 9.5 | 167 | 3 | 1.8 |
| Black | 1,604 | 23.2 | 170 | 10.6 | 496 | 84 | 16.9 | 1,108 | 86 | 7.8 |
| Asian/Pacific Islander | 130 | 1.9 | 7 | 5.4 | 29 | 4 | 13.8 | 101 | 3 | 3.0 |
| Hispanic | 3,651 | 52.9 | 191 | 5.2 | 737 | 96 | 13.0 | 2,914 | 95 | 3.3 |
| Am. Ind./N. Alask | 11 | 0.2 | 0 | 0.0 | 3 | 0 | 0.0 | 8 | 0 | 0.0 |
| Other | 34 | 0.5 | 4 | 11.8 | 7 | 2 | 28.6 | 27 | 2 | 7.4 |
| Unknown | 1,207 | 17.5 | 100 | 8.3 | 454 | 60 | 13.2 | 752 | 40 | 5.3 |
| STD symptoms | | | | | | | | | | |
| Yes | 104 | 1.5 | 19 | 18.3 | 43 | 6 | 14.0 | 61 | 13 | 21.3 |
| No | 5,453 | 79.0 | 348 | 6.4 | 1,192 | 170 | 14.3 | 4,261 | 178 | 4.2 |
| Unknown | 1,342 | 19.5 | 117 | 8.7 | 586 | 79 | 13.5 | 755 | 38 | 5.0 |
| Specific symptoms[^] | | | | | | | | | | |
| Abn vag/urethral discharge | 17 | 0.2 | 5 | 29.4 | 17 | 5 | 29.4 | 0 | 0 | 0.0 |
| Dysuria | 44 | 0.6 | 7 | 15.9 | 13 | 0 | 0.0 | 31 | 7 | 22.6 |
| Pelvic pain | 4 | 0.1 | 0 | 0.0 | 4 | 0 | 0.0 | 0 | 0 | 0.0 |
| Abn vag bleeding | 2 | 0.0 | 0 | 0.0 | 2 | 0 | 0.0 | 0 | 0 | 0.0 |
| Pregnant[^] | | | | | | | | | | |
| Yes | 38 | 0.6 | 4 | 10.5 | 38 | 4 | 10.5 | 0 | 0 | 0.0 |
| No | 975 | 14.1 | 143 | 14.7 | 975 | 143 | 14.7 | 0 | 0 | 0.0 |
| Possible | 10 | 0.1 | 2 | 20.0 | 10 | 2 | 20.0 | 0 | 0 | 0.0 |
| Unknown | 798 | 11.6 | 106 | 13.3 | 798 | 106 | 13.3 | 0 | 0 | 0.0 |

*Includes missing values for gender.

[^]Numbers may not sum to the total due to non-inclusive categories.

Table 8. Gonorrhea screening of inmates at Central Juvenile Hall, by gender, LACIPP, 2005.

| Characteristic | Total Gonorrhea* | | | | Females | | | Males | | |
|----------------------------|------------------|-------|---------------|------|-------------|---------------|------|-------------|---------------|-----|
| | Tested N | % | Positive N | % | Tested N | Positive N | % | Tested N | Positive N | % |
| Total | 6,940 | 100.0 | 112 | 1.6 | 1,836 | 76 | 4.1 | 5,103 | 36 | 0.7 |
| Age group | | | | | | | | | | |
| 10-14 | 652 | 9.4 | 2 | 0.3 | 199 | 2 | 1.0 | 453 | 0 | 0.0 |
| 15-19 | 6,265 | 90.3 | 110 | 1.8 | 1,628 | 74 | 4.5 | 4,636 | 36 | 0.8 |
| 20-24 | 23 | 0.3 | 0 | 0.0 | 9 | 0 | 0.0 | 14 | 0 | 0.0 |
| Unknown | 0 | 0.0 | 0 | 0.0 | 0 | 0 | 0.0 | 0 | 0 | 0.0 |
| Race/Ethnicity | | | | | | | | | | |
| White | 262 | 3.8 | 1 | 0.4 | 95 | 1 | 1.1 | 167 | 0 | 0.0 |
| Black | 1,614 | 23.3 | 68 | 4.2 | 501 | 43 | 8.6 | 1,113 | 25 | 2.2 |
| Asian/Pacific Islander | 132 | 1.9 | 2 | 1.5 | 29 | 2 | 6.9 | 103 | 0 | 0.0 |
| Hispanic | 3,669 | 52.9 | 21 | 0.6 | 742 | 15 | 2.0 | 2,927 | 6 | 0.2 |
| Am.Ind/N.Alask | 11 | 0.2 | 1 | 9.1 | 3 | 1 | 33.3 | 8 | 0 | 0.0 |
| Other | 34 | 0.5 | 0 | 0.0 | 7 | 0 | 0.0 | 27 | 0 | 0.0 |
| Unknown | 1,218 | 17.6 | 19 | 1.6 | 459 | 14 | 3.1 | 758 | 5 | 0.7 |
| STD symptoms | | | | | | | | | | |
| Yes | 105 | 1.5 | 7 | 6.7 | 43 | 4 | 9.3 | 62 | 3 | 4.8 |
| No | 5,479 | 78.9 | 79 | 1.4 | 1,200 | 51 | 4.3 | 4,279 | 28 | 0.7 |
| Unknown | 1,356 | 19.5 | 26 | 1.9 | 593 | 21 | 3.5 | 762 | 5 | 0.7 |
| Specific symptoms^ | | | | | | | | | | |
| Abn vag/urethral discharge | 17 | 0.2 | 4 | 23.5 | 17 | 4 | 23.5 | 0 | 0 | 0.0 |
| Dysuria | 44 | 0.6 | 2 | 4.5 | 13 | 0 | 0.0 | 31 | 2 | 6.5 |
| Pelvic pain | 4 | 0.1 | 0 | 0.0 | 4 | 0 | 0.0 | 0 | 0 | 0.0 |
| Abn vag bleeding | 2 | 0.0 | 0 | 0.0 | 2 | 0 | 0.0 | 0 | 0 | 0.0 |
| Pregnant^ | | | | | | | | | | |
| Yes | 38 | 0.5 | 2 | 5.3 | 38 | 2 | 5.3 | 0 | 0 | 0.0 |
| No | 981 | 14.1 | 46 | 4.7 | 981 | 46 | 4.7 | 0 | 0 | 0.0 |
| Possible | 10 | 0.1 | 0 | 0.0 | 10 | 0 | 0.0 | 0 | 0 | 0.0 |
| Unknown | 807 | 11.6 | 28 | 3.5 | 807 | 28 | 3.5 | 0 | 0 | 0.0 |

*Includes missing values for gender.

^Numbers may not sum to the total due to non-inclusive categories.

Table 9a. Chlamydia positivity among females at Central Juvenile Hall, by race and age group, 2005.

| | 10-14 | | | 15-19 | | | 20-24 | | | 25-29 | | |
|-----------------------|-------|----------|----------|-------|----------|----------|-------|----------|----------|--------|----------|----------|
| | (N) | | % | (N) | | % | (N) | | % | (N) | | % |
| | Total | Positive | Positive | Total | Positive | Positive | Total | Positive | Positive | Total | Positive | Positive |
| Total | 199 | 25 | 12.6 | 1,613 | 229 | 14.2 | 9 | 1 | 11.1 | 0 | 0 | 0.0 |
| Race/Ethnicity | | | | | | | | | | | | |
| White | 7 | 1 | 14.3 | 88 | 8 | 9.1 | 0 | 0 | 0.0 | 0 | 0 | 0.0 |
| Black | 57 | 9 | 15.8 | 438 | 75 | 17.1 | 1 | 0 | 0.0 | 0 | 0 | 0.0 |
| Asian/PI | 2 | 1 | 50.0 | 27 | 3 | 11.1 | 0 | 0 | 0.0 | 0 | 0 | 0.0 |
| Hispanic | 94 | 12 | 12.8 | 641 | 84 | 13.1 | 2 | 0 | 0.0 | 0 | 0 | 0.0 |
| Am.Ind/N.Alask | 0 | 0 | 0.0 | 3 | 0 | 0.0 | 0 | 0 | 0.0 | 0 | 0 | 0.0 |
| Other | 0 | 0 | 0.0 | 7 | 2 | 28.6 | 0 | 0 | 0.0 | 0 | 0 | 0.0 |
| Unknown | 39 | 2 | 5.1 | 409 | 57 | 13.9 | 6 | 1 | 16.7 | 0 | 0 | 0.0 |
| | 30-34 | | | 35-39 | | | 40+ | | | Total* | | |
| | (N) | | % | (N) | | % | (N) | | % | (N) | | % |
| | Total | Positive | Positive | Total | Positive | Positive | Total | Positive | Positive | Total | Positive | Positive |
| Total | 0 | 0 | 0.0 | 0 | 0 | 0.0 | 0 | 0 | 0.0 | 1,821 | 255 | 14.0 |
| Race/Ethnicity | | | | | | | | | | | | |
| White | 0 | 0 | 0.0 | 0 | 0 | 0.0 | 0 | 0 | 0.0 | 95 | 9 | 9.5 |
| Black | 0 | 0 | 0.0 | 0 | 0 | 0.0 | 0 | 0 | 0.0 | 496 | 84 | 16.9 |
| Asian/PI | 0 | 0 | 0.0 | 0 | 0 | 0.0 | 0 | 0 | 0.0 | 29 | 4 | 13.8 |
| Hispanic | 0 | 0 | 0.0 | 0 | 0 | 0.0 | 0 | 0 | 0.0 | 737 | 96 | 13.0 |
| Am.Ind/N.Alask | 0 | 0 | 0.0 | 0 | 0 | 0.0 | 0 | 0 | 0.0 | 3 | 0 | 0.0 |
| Other | 0 | 0 | 0.0 | 0 | 0 | 0.0 | 0 | 0 | 0.0 | 7 | 2 | 28.6 |
| Unknown | 0 | 0 | 0.0 | 0 | 0 | 0.0 | 0 | 0 | 0.0 | 454 | 60 | 13.2 |

*Includes missing values for age group.

Table 9b. Chlamydia positivity among males at Central Juvenile Hall, by race and age group, 2005.

| | 10-14 | | | 15-19 | | | 20-24 | | | 25-29 | | |
|-----------------------|-------|----------|----------|-------|----------|----------|-------|----------|----------|--------|----------|----------|
| | (N) | | % | (N) | | % | (N) | | % | (N) | | % |
| | Total | Positive | Positive | Total | Positive | Positive | Total | Positive | Positive | Total | Positive | Positive |
| Total | 452 | 7 | 1.5 | 4,611 | 222 | 4.8 | 14 | 0 | 0.0 | 0 | 0 | 0.0 |
| Race/Ethnicity | | | | | | | | | | | | |
| White | 10 | 0 | 0.0 | 157 | 3 | 1.9 | 0 | 0 | 0.0 | 0 | 0 | 0.0 |
| Black | 115 | 2 | 1.7 | 991 | 84 | 8.5 | 2 | 0 | 0.0 | 0 | 0 | 0.0 |
| Asian/PI | 8 | 0 | 0.0 | 93 | 3 | 3.2 | 0 | 0 | 0.0 | 0 | 0 | 0.0 |
| Hispanic | 242 | 4 | 1.7 | 2,663 | 91 | 3.4 | 9 | 0 | 0.0 | 0 | 0 | 0.0 |
| Am.Ind/N.Alask | 1 | 0 | 0.0 | 7 | 0 | 0.0 | 0 | 0 | 0.0 | 0 | 0 | 0.0 |
| Other | 3 | 0 | 0.0 | 24 | 2 | 8.3 | 0 | 0 | 0.0 | 0 | 0 | 0.0 |
| Unknown | 73 | 1 | 1.4 | 676 | 39 | 5.8 | 3 | 0 | 0.0 | 0 | 0 | 0.0 |
| | 30-34 | | | 35-39 | | | 40+ | | | Total* | | |
| | (N) | | % | (N) | | % | (N) | | % | (N) | | % |
| | Total | Positive | Positive | Total | Positive | Positive | Total | Positive | Positive | Total | Positive | Positive |
| Total | 0 | 0 | 0.0 | 0 | 0 | 0.0 | 0 | 0 | 0.0 | 5,077 | 229 | 4.5 |
| Race/Ethnicity | | | | | | | | | | | | |
| White | 0 | 0 | 0.0 | 0 | 0 | 0.0 | 0 | 0 | 0.0 | 167 | 3 | 1.8 |
| Black | 0 | 0 | 0.0 | 0 | 0 | 0.0 | 0 | 0 | 0.0 | 1,108 | 86 | 7.8 |
| Asian/PI | 0 | 0 | 0.0 | 0 | 0 | 0.0 | 0 | 0 | 0.0 | 101 | 3 | 3.0 |
| Hispanic | 0 | 0 | 0.0 | 0 | 0 | 0.0 | 0 | 0 | 0.0 | 2,914 | 95 | 3.3 |
| Am.Ind/N.Alask | 0 | 0 | 0.0 | 0 | 0 | 0.0 | 0 | 0 | 0.0 | 8 | 0 | 0.0 |
| Other | 0 | 0 | 0.0 | 0 | 0 | 0.0 | 0 | 0 | 0.0 | 27 | 2 | 7.4 |
| Unknown | 0 | 0 | 0.0 | 0 | 0 | 0.0 | 0 | 0 | 0.0 | 752 | 40 | 5.3 |

*Includes missing values for age group.

Table 10a. Gonorrhea positivity among females at Central Juvenile Hall, by race and age group, 2005.

| | 10-14 | | | 15-19 | | | 20-24 | | | 25-29 | | |
|-----------------------|-------|----------|----------|-------|----------|----------|-------|----------|----------|--------|----------|------------|
| | (N) | | % | (N) | | % | (N) | | % | (N) | | % |
| | Total | Positive | Positive | Total | Positive | Positive | Total | Positive | Positive | Total | Positive | % Positive |
| Total | 199 | 2 | 1.0 | 1,628 | 74 | 4.5 | 9 | 0 | 0.0 | 0 | 0 | 0.0 |
| Race/Ethnicity | | | | | | | | | | | | |
| White | 7 | 0 | 0.0 | 88 | 1 | 1.1 | 0 | 0 | 0.0 | 0 | 0 | 0.0 |
| Black | 57 | 2 | 3.5 | 443 | 41 | 9.3 | 1 | 0 | 0.0 | 0 | 0 | 0.0 |
| Asian/PI | 2 | 0 | 0.0 | 27 | 2 | 7.4 | 0 | 0 | 0.0 | 0 | 0 | 0.0 |
| Hispanic | 94 | 0 | 0.0 | 646 | 15 | 2.3 | 2 | 0 | 0.0 | 0 | 0 | 0.0 |
| Am.Ind/N.Alask | 0 | 0 | 0.0 | 3 | 1 | 33.3 | 0 | 0 | 0.0 | 0 | 0 | 0.0 |
| Other | 0 | 0 | 0.0 | 7 | 0 | 0.0 | 0 | 0 | 0.0 | 0 | 0 | 0.0 |
| Unknown | 39 | 0 | 0.0 | 414 | 14 | 3.4 | 6 | 0 | 0.0 | 0 | 0 | 0.0 |
| | 30-34 | | | 35-39 | | | 40+ | | | Total* | | |
| | (N) | | % | (N) | | % | (N) | | % | (N) | | % |
| | Total | Positive | Positive | Total | Positive | Positive | Total | Positive | Positive | Total | Positive | % Positive |
| Total | 0 | 0 | 0.0 | 0 | 0 | 0.0 | 0 | 0 | 0.0 | 1,836 | 76 | 4.1 |
| Race/Ethnicity | | | | | | | | | | | | |
| White | 0 | 0 | 0.0 | 0 | 0 | 0.0 | 0 | 0 | 0.0 | 95 | 1 | 1.1 |
| Black | 0 | 0 | 0.0 | 0 | 0 | 0.0 | 0 | 0 | 0.0 | 501 | 43 | 8.6 |
| Asian/PI | 0 | 0 | 0.0 | 0 | 0 | 0.0 | 0 | 0 | 0.0 | 29 | 2 | 6.9 |
| Hispanic | 0 | 0 | 0.0 | 0 | 0 | 0.0 | 0 | 0 | 0.0 | 742 | 15 | 2.0 |
| Am.Ind/N.Alask | 0 | 0 | 0.0 | 0 | 0 | 0.0 | 0 | 0 | 0.0 | 3 | 1 | 33.3 |
| Other | 0 | 0 | 0.0 | 0 | 0 | 0.0 | 0 | 0 | 0.0 | 7 | 0 | 0.0 |
| Unknown | 0 | 0 | 0.0 | 0 | 0 | 0.0 | 0 | 0 | 0.0 | 459 | 14 | 3.1 |

*Includes missing values for age group.

Table 10b. Gonorrhea positivity among males at Central Juvenile Hall, by race and age group, 2005.

| | 10-14 | | | 15-19 | | | 20-24 | | | 25-29 | | |
|-----------------------|-------|----------|----------|-------|----------|----------|-------|----------|----------|--------|----------|------------|
| | (N) | | % | (N) | | % | (N) | | % | (N) | | % |
| | Total | Positive | Positive | Total | Positive | Positive | Total | Positive | Positive | Total | Positive | % Positive |
| Total | 453 | 0 | 0.0 | 4,636 | 36 | 0.8 | 14 | 0 | 0.0 | 0 | 0 | 0.0 |
| Race/Ethnicity | | | | | | | | | | | | |
| White | 10 | 0 | 0.0 | 157 | 0 | 0.0 | 0 | 0 | 0.0 | 0 | 0 | 0.0 |
| Black | 115 | 0 | 0.0 | 996 | 25 | 2.5 | 2 | 0 | 0.0 | 0 | 0 | 0.0 |
| Asian/PI | 8 | 0 | 0.0 | 95 | 0 | 0.0 | 0 | 0 | 0.0 | 0 | 0 | 0.0 |
| Hispanic | 242 | 0 | 0.0 | 2,676 | 6 | 0.2 | 9 | 0 | 0.0 | 0 | 0 | 0.0 |
| Am.Ind/N.Alask | 1 | 0 | 0.0 | 7 | 0 | 0.0 | 0 | 0 | 0.0 | 0 | 0 | 0.0 |
| Other | 3 | 0 | 0.0 | 24 | 0 | 0.0 | 0 | 0 | 0.0 | 0 | 0 | 0.0 |
| Unknown | 74 | 0 | 0.0 | 681 | 5 | 0.7 | 3 | 0 | 0.0 | 0 | 0 | 0.0 |
| | 30-34 | | | 35-39 | | | 40+ | | | Total* | | |
| | (N) | | % | (N) | | % | (N) | | % | (N) | | % |
| | Total | Positive | Positive | Total | Positive | Positive | Total | Positive | Positive | Total | Positive | % Positive |
| Total | 0 | 0 | 0.0 | 0 | 0 | 0.0 | 0 | 0 | 0.0 | 5,103 | 36 | 0.7 |
| Race/Ethnicity | | | | | | | | | | | | |
| White | 0 | 0 | 0.0 | 0 | 0 | 0.0 | 0 | 0 | 0.0 | 167 | 0 | 0.0 |
| Black | 0 | 0 | 0.0 | 0 | 0 | 0.0 | 0 | 0 | 0.0 | 1,113 | 25 | 2.2 |
| Asian/PI | 0 | 0 | 0.0 | 0 | 0 | 0.0 | 0 | 0 | 0.0 | 103 | 0 | 0.0 |
| Hispanic | 0 | 0 | 0.0 | 0 | 0 | 0.0 | 0 | 0 | 0.0 | 2,927 | 6 | 0.2 |
| Am.Ind/N.Alask | 0 | 0 | 0.0 | 0 | 0 | 0.0 | 0 | 0 | 0.0 | 8 | 0 | 0.0 |
| Other | 0 | 0 | 0.0 | 0 | 0 | 0.0 | 0 | 0 | 0.0 | 27 | 0 | 0.0 |
| Unknown | 0 | 0 | 0.0 | 0 | 0 | 0.0 | 0 | 0 | 0.0 | 758 | 5 | 0.7 |

*Includes missing values for age group.

Table 11. Chlamydia screening of inmates at Los Padrinos Juvenile Hall by gender, LACIPP, 2005.

| Characteristic | Total* | | | Females | | | Males | | |
|----------------------------|-------------|-----------------------|------|-------------|---------------|------|-------------|---------------|------|
| | Tested N | Chlamydia Positive | % | Tested N | Positive N | % | Tested N | Positive N | % |
| Total | 9,544 | 806 | 8.4 | 1,927 | 362 | 18.8 | 7,612 | 443 | 5.8 |
| Age group | | | | | | | | | |
| 10-14 | 1,139 | 53 | 4.7 | 278 | 33 | 11.9 | 860 | 20 | 2.3 |
| 15-19 | 8,375 | 751 | 9.0 | 1,643 | 328 | 20.0 | 6,728 | 422 | 6.3 |
| 20-24 | 30 | 2 | 6.7 | 6 | 1 | 16.7 | 24 | 1 | 4.2 |
| Unknown | 0 | 0 | 0.0 | 0 | 0 | 0.0 | 0 | 0 | 0.0 |
| Race/Ethnicity | | | | | | | | | |
| White | 490 | 16 | 3.3 | 110 | 9 | 8.2 | 380 | 7 | 1.8 |
| Black | 2,834 | 333 | 11.8 | 519 | 112 | 21.6 | 2,315 | 221 | 9.5 |
| Asian/PI | 197 | 12 | 6.1 | 28 | 5 | 17.9 | 169 | 7 | 4.1 |
| Hispanic | 4,225 | 249 | 5.9 | 650 | 113 | 17.4 | 3,575 | 136 | 3.8 |
| Am.Ind/N.Alask | 8 | 2 | 25.0 | 3 | 1 | 33.3 | 5 | 1 | 20.0 |
| Other | 42 | 3 | 7.1 | 8 | 1 | 12.5 | 34 | 2 | 5.9 |
| Unknown | 1,748 | 191 | 10.9 | 609 | 121 | 19.9 | 1,134 | 69 | 6.1 |
| STD symptoms | | | | | | | | | |
| Yes | 24 | 5 | 20.8 | 8 | 2 | 25.0 | 16 | 3 | 18.8 |
| No | 7,380 | 589 | 8.0 | 1,267 | 235 | 18.5 | 6,113 | 354 | 5.8 |
| Unknown | 2,140 | 212 | 9.9 | 652 | 125 | 19.2 | 1,483 | 86 | 5.8 |
| Specific symptoms^ | | | | | | | | | |
| Abn vag/urethral discharge | 1 | 0 | 0.0 | 1 | 0 | 0.0 | 0 | 0 | 0.0 |
| Dysuria | 11 | 4 | 36.4 | 4 | 1 | 25.0 | 7 | 3 | 42.9 |
| Pelvic pain | 0 | 0 | 0.0 | 0 | 0 | 0.0 | 0 | 0 | 0.0 |
| Abn vag bleeding | 0 | 0 | 0.0 | 0 | 0 | 0.0 | 0 | 0 | 0.0 |
| Pregnant^ | | | | | | | | | |
| Yes | 62 | 16 | 25.8 | 62 | 16 | 25.8 | 0 | 0 | 0.0 |
| No | 973 | 191 | 19.6 | 973 | 191 | 19.6 | 0 | 0 | 0.0 |
| Possible | 3 | 1 | 33.3 | 3 | 1 | 33.3 | 0 | 0 | 0.0 |
| Unknown | 894 | 155 | 17.3 | 889 | 154 | 17.3 | 0 | 0 | 0.0 |

*Includes missing values for gender.

^Numbers may not sum to the total due to non-inclusive categories.

Table 12. Gonorrhea screening of inmates at Los Padrinos Juvenile Hall by gender, LACIPP, 2005.

| Characteristic | Total* | | | Females | | | Males | | |
|--------------------------------------|----------|------------|-----|----------|------------|------|----------|------------|-----|
| | Tested N | Positive N | % | Tested N | Positive N | % | Tested N | Positive N | % |
| Total | 9,546 | 197 | 2.1 | 1,928 | 123 | 6.4 | 7,613 | 74 | 1.0 |
| Age group | | | | | | | | | |
| 10-14 | 1,139 | 20 | 1.8 | 278 | 16 | 5.8 | 860 | 4 | 0.5 |
| 15-19 | 8,376 | 176 | 2.1 | 1,643 | 107 | 6.5 | 6,729 | 69 | 1.0 |
| 20-24 | 31 | 1 | 3.2 | 7 | 0 | 0.0 | 24 | 1 | 4.2 |
| Unknown | 0 | 0 | 0.0 | 0 | 0 | 0.0 | 0 | 0 | 0.0 |
| Race/Ethnicity | | | | | | | | | |
| White | 490 | 9 | 1.8 | 110 | 8 | 7.3 | 380 | 1 | 0.3 |
| Black | 2,834 | 98 | 3.5 | 519 | 53 | 10.2 | 2,315 | 45 | 1.9 |
| Asian/PI | 197 | 2 | 1.0 | 28 | 1 | 3.6 | 169 | 1 | 0.6 |
| Hispanic | 4,225 | 39 | 0.9 | 650 | 22 | 3.4 | 3,575 | 17 | 0.5 |
| Am.Ind/N.Alask | 8 | 0 | 0.0 | 3 | 0 | 0.0 | 5 | 0 | 0.0 |
| Other | 42 | 0 | 0.0 | 8 | 0 | 0.0 | 34 | 0 | 0.0 |
| Unknown | 1,750 | 49 | 2.8 | 610 | 39 | 6.4 | 1,135 | 10 | 0.9 |
| STD symptoms | | | | | | | | | |
| Yes | 24 | 0 | 0.0 | 8 | 0 | 0.0 | 16 | 0 | 0.0 |
| No | 7,380 | 145 | 2.0 | 1,267 | 80 | 6.3 | 6,113 | 65 | 1.1 |
| Unknown | 2,142 | 52 | 2.4 | 653 | 43 | 6.6 | 1,484 | 9 | 0.6 |
| Specific symptoms[^] | | | | | | | | | |
| Abn vag/urethral discharge | 1 | 0 | 0.0 | 1 | 0 | 0.0 | 0 | 0 | 0.0 |
| Dysuria | 11 | 0 | 0.0 | 4 | 0 | 0.0 | 7 | 0 | 0.0 |
| Pelvic pain | 0 | 0 | 0.0 | 0 | 0 | 0.0 | 0 | 0 | 0.0 |
| Abn vag bleeding | 0 | 0 | 0.0 | 0 | 0 | 0.0 | 0 | 0 | 0.0 |
| Pregnant[^] | | | | | | | | | |
| Yes | 62 | 3 | 4.8 | 62 | 3 | 4.8 | 0 | 0 | 0.0 |
| No | 973 | 65 | 6.7 | 973 | 65 | 6.7 | 0 | 0 | 0.0 |
| Possible | 3 | 0 | 0.0 | 3 | 0 | 0.0 | 0 | 0 | 0.0 |
| Unknown | 895 | 55 | 6.1 | 890 | 55 | 6.2 | 0 | 0 | 0.0 |

*Includes missing values for gender.

[^]Numbers may not sum to the total due to non-inclusive categories.

Table 13a. Chlamydia positivity among females at Los Padrinos Juvenile Hall, by race and age group, 2005.

| | 10-14 | | | 15-19 | | | 20-24 | | | 25-29 | | |
|-----------------------|-------|----------|----------|-------|----------|----------|-------|----------|----------|--------|----------|----------|
| | (N) | | % | (N) | | % | (N) | | % | (N) | | % |
| | Total | Positive | Positive | Total | Positive | Positive | Total | Positive | Positive | Total | Positive | Positive |
| Total Females | 278 | 33 | 11.9 | 1,643 | 328 | 20.0 | 6 | 1 | 16.7 | 0 | 0 | 0.0 |
| Race/Ethnicity | | | | | | | | | | | | |
| White | 12 | 0 | 0.0 | 98 | 9 | 9.2 | 0 | 0 | 0.0 | 0 | 0 | 0.0 |
| Black | 91 | 13 | 14.3 | 427 | 99 | 23.2 | 1 | 0 | 0.0 | 0 | 0 | 0.0 |
| Asian/PI | 4 | 0 | 0.0 | 24 | 5 | 20.8 | 0 | 0 | 0.0 | 0 | 0 | 0.0 |
| Hispanic | 100 | 11 | 11.0 | 547 | 101 | 18.5 | 3 | 1 | 33.3 | 0 | 0 | 0.0 |
| Am.Ind/N.Alask | 1 | 1 | 100.0 | 2 | 0 | 0.0 | 0 | 0 | 0.0 | 0 | 0 | 0.0 |
| Other | 2 | 0 | 0.0 | 6 | 1 | 16.7 | 0 | 0 | 0.0 | 0 | 0 | 0.0 |
| Unknown | 68 | 8 | 11.8 | 539 | 113 | 21.0 | 2 | 0 | 0.0 | 0 | 0 | 0.0 |
| | 30-34 | | | 35-39 | | | 40+ | | | Total* | | |
| | (N) | | % | (N) | | % | (N) | | % | (N) | | % |
| | Total | Positive | Positive | Total | Positive | Positive | Total | Positive | Positive | Total | Positive | Positive |
| Total Females | 0 | 0 | 0.0 | 0 | 0 | 0.0 | 0 | 0 | 0.0 | 1,927 | 362 | 18.8 |
| Race/Ethnicity | | | | | | | | | | | | |
| White | 0 | 0 | 0.0 | 0 | 0 | 0.0 | 0 | 0 | 0.0 | 110 | 9 | 8.2 |
| Black | 0 | 0 | 0.0 | 0 | 0 | 0.0 | 0 | 0 | 0.0 | 519 | 112 | 21.6 |
| Asian/PI | 0 | 0 | 0.0 | 0 | 0 | 0.0 | 0 | 0 | 0.0 | 28 | 5 | 17.9 |
| Hispanic | 0 | 0 | 0.0 | 0 | 0 | 0.0 | 0 | 0 | 0.0 | 650 | 113 | 17.4 |
| Am.Ind/N.Alask | 0 | 0 | 0.0 | 0 | 0 | 0.0 | 0 | 0 | 0.0 | 3 | 1 | 33.3 |
| Other | 0 | 0 | 0.0 | 0 | 0 | 0.0 | 0 | 0 | 0.0 | 8 | 1 | 12.5 |
| Unknown | 0 | 0 | 0.0 | 0 | 0 | 0.0 | 0 | 0 | 0.0 | 609 | 121 | 19.9 |

*Includes missing values for age group.

Table 13b. Chlamydia positivity among males at Los Padrinos Juvenile Hall, by race and age group, 2005.

| | 10-14 | | | 15-19 | | | 20-24 | | | 25-29 | | |
|-----------------------|-------|----------|----------|-------|----------|----------|-------|----------|----------|--------|----------|----------|
| | (N) | | % | (N) | | % | (N) | | % | (N) | | % |
| | Total | Positive | Positive | Total | Positive | Positive | Total | Positive | Positive | Total | Positive | Positive |
| Total Males | 860 | 20 | 2.3 | 6,728 | 422 | 6.3 | 24 | 1 | 4.2 | 0 | 0 | 0.0 |
| Race/Ethnicity | | | | | | | | | | | | |
| White | 40 | 0 | 0.0 | 340 | 7 | 2.1 | 0 | 0 | 0.0 | 0 | 0 | 0.0 |
| Black | 326 | 11 | 3.4 | 1,985 | 210 | 10.6 | 4 | 0 | 0.0 | 0 | 0 | 0.0 |
| Asian/PI | 23 | 1 | 4.3 | 146 | 6 | 4.1 | 0 | 0 | 0.0 | 0 | 0 | 0.0 |
| Hispanic | 353 | 5 | 1.4 | 3,215 | 131 | 4.1 | 7 | 0 | 0.0 | 0 | 0 | 0.0 |
| Am.Ind/N.Alask | 0 | 0 | 0.0 | 5 | 1 | 20.0 | 0 | 0 | 0.0 | 0 | 0 | 0.0 |
| Other | 2 | 0 | 0.0 | 31 | 2 | 6.5 | 1 | 0 | 0.0 | 0 | 0 | 0.0 |
| Unknown | 116 | 3 | 2.6 | 1,006 | 65 | 6.5 | 12 | 1 | 8.3 | 0 | 0 | 0.0 |
| | 30-34 | | | 35-39 | | | 40+ | | | Total* | | |
| | (N) | | % | (N) | | % | (N) | | % | (N) | | % |
| | Total | Positive | Positive | Total | Positive | Positive | Total | Positive | Positive | Total | Positive | Positive |
| Total Males | 0 | 0 | 0.0 | 0 | 0 | 0.0 | 0 | 0 | 0.0 | 7,612 | 443 | 5.8 |
| Race/Ethnicity | | | | | | | | | | | | |
| White | 0 | 0 | 0.0 | 0 | 0 | 0.0 | 0 | 0 | 0.0 | 380 | 7 | 1.8 |
| Black | 0 | 0 | 0.0 | 0 | 0 | 0.0 | 0 | 0 | 0.0 | 2,315 | 221 | 9.5 |
| Asian/PI | 0 | 0 | 0.0 | 0 | 0 | 0.0 | 0 | 0 | 0.0 | 169 | 7 | 4.1 |
| Hispanic | 0 | 0 | 0.0 | 0 | 0 | 0.0 | 0 | 0 | 0.0 | 3,575 | 136 | 3.8 |
| Am.Ind/N.Alask | 0 | 0 | 0.0 | 0 | 0 | 0.0 | 0 | 0 | 0.0 | 5 | 1 | 20.0 |
| Other | 0 | 0 | 0.0 | 0 | 0 | 0.0 | 0 | 0 | 0.0 | 34 | 2 | 5.9 |
| Unknown | 0 | 0 | 0.0 | 0 | 0 | 0.0 | 0 | 0 | 0.0 | 1,134 | 69 | 6.1 |

*Includes missing values for age group.

Table 14a. Gonorrhea positivity among females at Los Padrinos Juvenile Hall, by race and age group, 2005.

| | 10-14 | | | 15-19 | | | 20-24 | | | 25-29 | | |
|-----------------------|-------|----------|----------|-------|----------|----------|-------|----------|----------|--------|----------|------|
| | Total | (N) | % | Total | (N) | % | Total | (N) | % | Total | (N) | % |
| | | Positive | Positive | | Positive | Positive | | Positive | Positive | | Positive | |
| Total Females | 278 | 16 | 5.8 | 1,643 | 107 | 6.5 | 7 | 0 | 0.0 | 0 | 0 | 0.0 |
| Race/Ethnicity | | | | | | | | | | | | |
| White | 12 | 1 | 8.3 | 98 | 7 | 7.1 | 0 | 0 | 0.0 | 0 | 0 | 0.0 |
| Black | 91 | 13 | 14.3 | 427 | 40 | 9.4 | 1 | 0 | 0.0 | 0 | 0 | 0.0 |
| Asian/PI | 4 | 0 | 0.0 | 24 | 1 | 4.2 | 0 | 0 | 0.0 | 0 | 0 | 0.0 |
| Hispanic | 100 | 0 | 0.0 | 547 | 22 | 4.0 | 3 | 0 | 0.0 | 0 | 0 | 0.0 |
| Am.Ind/N.Alask | 1 | 0 | 0.0 | 2 | 0 | 0.0 | 0 | 0 | 0.0 | 0 | 0 | 0.0 |
| Other | 2 | 0 | 0.0 | 6 | 0 | 0.0 | 0 | 0 | 0.0 | 0 | 0 | 0.0 |
| Unknown | 68 | 2 | 2.9 | 539 | 37 | 6.9 | 3 | 0 | 0.0 | 0 | 0 | 0.0 |
| | 30-34 | | | 35-39 | | | 40+ | | | Total* | | |
| | Total | (N) | % | Total | (N) | % | Total | (N) | % | Total | (N) | % |
| | | Positive | Positive | | Positive | Positive | | Positive | Positive | | Positive | |
| Total Females | 0 | 0 | 0.0 | 0 | 0 | 0.0 | 0 | 0 | 0.0 | 1,928 | 123 | 6.4 |
| Race/Ethnicity | | | | | | | | | | | | |
| White | 0 | 0 | 0.0 | 0 | 0 | 0.0 | 0 | 0 | 0.0 | 110 | 8 | 7.3 |
| Black | 0 | 0 | 0.0 | 0 | 0 | 0.0 | 0 | 0 | 0.0 | 519 | 53 | 10.2 |
| Asian/PI | 0 | 0 | 0.0 | 0 | 0 | 0.0 | 0 | 0 | 0.0 | 28 | 1 | 3.6 |
| Hispanic | 0 | 0 | 0.0 | 0 | 0 | 0.0 | 0 | 0 | 0.0 | 650 | 22 | 3.4 |
| Am.Ind/N.Alask | 0 | 0 | 0.0 | 0 | 0 | 0.0 | 0 | 0 | 0.0 | 3 | 0 | 0.0 |
| Other | 0 | 0 | 0.0 | 0 | 0 | 0.0 | 0 | 0 | 0.0 | 8 | 0 | 0.0 |
| Unknown | 0 | 0 | 0.0 | 0 | 0 | 0.0 | 0 | 0 | 0.0 | 610 | 39 | 6.4 |

*Includes missing values for age group.

Table 14b. Gonorrhea positivity among males at Los Padrinos Juvenile Hall, by race and age group, 2005.

| | 10-14 | | | 15-19 | | | 20-24 | | | 25-29 | | |
|-----------------------|-------|----------|----------|-------|----------|----------|-------|----------|----------|--------|----------|-----|
| | Total | (N) | % | Total | (N) | % | Total | (N) | % | Total | (N) | % |
| | | Positive | Positive | | Positive | Positive | | Positive | Positive | | Positive | |
| Total Males | 860 | 4 | 0.5 | 6,729 | 69 | 1.0 | 24 | 1 | 4.2 | 0 | 0 | 0.0 |
| Race/Ethnicity | | | | | | | | | | | | |
| White | 40 | 0 | 0.0 | 340 | 1 | 0.3 | 0 | 0 | 0.0 | 0 | 0 | 0.0 |
| Black | 326 | 1 | 0.3 | 1985 | 43 | 2.2 | 4 | 1 | 25.0 | 0 | 0 | 0.0 |
| Asian/PI | 23 | 1 | 4.3 | 146 | 0 | 0.0 | 0 | 0 | 0.0 | 0 | 0 | 0.0 |
| Hispanic | 353 | 1 | 0.3 | 3215 | 16 | 0.5 | 7 | 0 | 0.0 | 0 | 0 | 0.0 |
| Am.Ind/N.Alask | 0 | 0 | 0.0 | 5 | 0 | 0.0 | 0 | 0 | 0.0 | 0 | 0 | 0.0 |
| Other | 2 | 0 | 0.0 | 31 | 0 | 0.0 | 1 | 0 | 0.0 | 0 | 0 | 0.0 |
| Unknown | 116 | 1 | 0.9 | 1007 | 9 | 0.9 | 12 | 0 | 0.0 | 0 | 0 | 0.0 |
| | 30-34 | | | 35-39 | | | 40+ | | | Total* | | |
| | Total | (N) | % | Total | (N) | % | Total | (N) | % | Total | (N) | % |
| | | Positive | Positive | | Positive | Positive | | Positive | Positive | | Positive | |
| Total Males | 0 | 0 | 0.0 | 0 | 0 | 0.0 | 0 | 0 | 0.0 | 7,613 | 74 | 1.0 |
| Race/Ethnicity | | | | | | | | | | | | |
| White | 0 | 0 | 0.0 | 0 | 0 | 0.0 | 0 | 0 | 0.0 | 380 | 1 | 0.3 |
| Black | 0 | 0 | 0.0 | 0 | 0 | 0.0 | 0 | 0 | 0.0 | 2,315 | 45 | 1.9 |
| Asian/PI | 0 | 0 | 0.0 | 0 | 0 | 0.0 | 0 | 0 | 0.0 | 169 | 1 | 0.6 |
| Hispanic | 0 | 0 | 0.0 | 0 | 0 | 0.0 | 0 | 0 | 0.0 | 3,575 | 17 | 0.5 |
| Am.Ind/N.Alask | 0 | 0 | 0.0 | 0 | 0 | 0.0 | 0 | 0 | 0.0 | 5 | 0 | 0.0 |
| Other | 0 | 0 | 0.0 | 0 | 0 | 0.0 | 0 | 0 | 0.0 | 34 | 0 | 0.0 |
| Unknown | 0 | 0 | 0.0 | 0 | 0 | 0.0 | 0 | 0 | 0.0 | 1,135 | 10 | 0.9 |

*Includes missing values for age group.

Table 15. Chlamydia screening of inmates at San Fernando Juvenile Hall by gender, LACIPP, 2005.

| Characteristic | Total* | | | Females | | | Males | | |
|----------------------------|-------------|---------------|------|-------------|---------------|------|-------------|---------------|------|
| | Tested N | Positive N | % | Tested N | Positive N | % | Tested N | Positive N | % |
| Total | 5,157 | 318 | 6.2 | 1,221 | 159 | 13.0 | 3,932 | 158 | 4.0 |
| Age group | | | | | | | | | |
| 10-14 | 543 | 19 | 3.5 | 119 | 17 | 14.3 | 424 | 2 | 0.5 |
| 15-19 | 4,593 | 296 | 6.4 | 1,097 | 141 | 12.9 | 3,492 | 154 | 4.4 |
| 20-24 | 21 | 3 | 14.3 | 5 | 1 | 20.0 | 16 | 2 | 12.5 |
| Unknown | 0 | 0 | 0.0 | 0 | 0 | 0.0 | 0 | 0 | 0.0 |
| Race/Ethnicity | | | | | | | | | |
| White | 525 | 18 | 3.4 | 129 | 12 | 9.3 | 396 | 6 | 1.5 |
| Black | 1,057 | 106 | 10.0 | 246 | 49 | 19.9 | 810 | 57 | 7.0 |
| Asian/PI | 57 | 5 | 8.8 | 12 | 5 | 41.7 | 44 | 0 | 0.0 |
| Hispanic | 2,474 | 98 | 4.0 | 410 | 40 | 9.8 | 2,064 | 58 | 2.8 |
| Am.Ind/N.Alask | 10 | 0 | 0.0 | 1 | 0 | 0.0 | 9 | 0 | 0.0 |
| Other | 38 | 2 | 5.3 | 9 | 2 | 22.2 | 29 | 0 | 0.0 |
| Unknown | 996 | 89 | 8.9 | 414 | 51 | 12.3 | 580 | 37 | 6.4 |
| STD symptoms | | | | | | | | | |
| Yes | 31 | 3 | 9.7 | 15 | 1 | 6.7 | 16 | 2 | 12.5 |
| No | 4,135 | 224 | 5.4 | 794 | 106 | 13.4 | 3,340 | 118 | 3.5 |
| Unknown | 991 | 91 | 9.2 | 412 | 52 | 12.6 | 576 | 38 | 6.6 |
| Specific symptoms^ | | | | | | | | | |
| Abn vag/urethral discharge | 10 | 1 | 10.0 | 8 | 0 | 0.0 | 2 | 1 | 50.0 |
| Dysuria | 8 | 0 | 0.0 | 1 | 0 | 0.0 | 7 | 0 | 0.0 |
| Pelvic pain | 1 | 0 | 0.0 | 1 | 0 | 0.0 | 0 | 0 | 0.0 |
| Abn vag bleeding | 0 | 0 | 0.0 | 0 | 0 | 0.0 | 0 | 0 | 0.0 |
| Pregnant^ | | | | | | | | | |
| Yes | 33 | 1 | 3.0 | 33 | 1 | 3.0 | 0 | 0 | 0.0 |
| No | 625 | 83 | 13.3 | 625 | 83 | 13.3 | 0 | 0 | 0.0 |
| Possible | 35 | 4 | 11.4 | 35 | 4 | 11.4 | 0 | 0 | 0.0 |
| Unknown | 532 | 72 | 13.5 | 528 | 71 | 13.4 | 0 | 0 | 0.0 |

*Includes missing values for gender.

^Numbers may not sum to the total due to non-inclusive categories.

Table 16. Gonorrhea screening of inmates at San Fernando Juvenile Hall by gender, LACIPP, 2005.

| Characteristic | Total* | | | Females | | | Males | | |
|----------------------------|-------------|---------------|------|-------------|---------------|------|-------------|---------------|-----|
| | Tested N | Positive N | % | Tested N | Positive N | % | Tested N | Positive N | % |
| Total | 5,161 | 70 | 1.4 | 1,223 | 49 | 4.0 | 3,934 | 21 | 0.5 |
| Age group | | | | | | | | | |
| 10-14 | 544 | 7 | 1.3 | 120 | 6 | 5.0 | 424 | 1 | 0.2 |
| 15-19 | 4,596 | 63 | 1.4 | 1,098 | 43 | 3.9 | 3,494 | 20 | 0.6 |
| 20-24 | 21 | 0 | 0.0 | 5 | 0 | 0.0 | 16 | 0 | 0.0 |
| Unknown | 0 | 0 | 0.0 | 0 | 0 | 0.0 | 0 | 0 | 0.0 |
| Race/Ethnicity | | | | | | | | | |
| White | 525 | 4 | 0.8 | 129 | 3 | 2.3 | 396 | 1 | 0.3 |
| Black | 1,057 | 37 | 3.5 | 246 | 25 | 10.2 | 810 | 12 | 1.5 |
| Asian/PI | 57 | 1 | 1.8 | 12 | 1 | 8.3 | 44 | 0 | 0.0 |
| Hispanic | 2,477 | 12 | 0.5 | 411 | 8 | 1.9 | 2,066 | 4 | 0.2 |
| Am.Ind/N.Alask | 10 | 0 | 0.0 | 1 | 0 | 0.0 | 9 | 0 | 0.0 |
| Other | 38 | 1 | 2.6 | 9 | 1 | 11.1 | 29 | 0 | 0.0 |
| Unknown | 997 | 15 | 1.5 | 415 | 11 | 2.7 | 580 | 4 | 0.7 |
| STD symptoms | | | | | | | | | |
| Yes | 31 | 1 | 3.2 | 15 | 1 | 6.7 | 16 | 0 | 0.0 |
| No | 4,138 | 53 | 1.3 | 795 | 35 | 4.4 | 3,342 | 18 | 0.5 |
| Unknown | 992 | 16 | 1.6 | 413 | 13 | 3.1 | 576 | 3 | 0.5 |
| Specific symptoms^ | | | | | | | | | |
| Abn vag/urethral discharge | 10 | 1 | 10.0 | 8 | 1 | 12.5 | 2 | 0 | 0.0 |
| Dysuria | 8 | 0 | 0.0 | 1 | 0 | 0.0 | 7 | 0 | 0.0 |
| Pelvic pain | 1 | 0 | 0.0 | 1 | 0 | 0.0 | 0 | 0 | 0.0 |
| Abn vag bleeding | 0 | 0 | 0.0 | 0 | 0 | 0.0 | 0 | 0 | 0.0 |
| Pregnant^ | | | | | | | | | |
| Yes | 33 | 1 | 3.0 | 33 | 1 | 3.0 | 0 | 0 | 0.0 |
| No | 626 | 29 | 4.6 | 626 | 29 | 4.6 | 0 | 0 | 0.0 |
| Possible | 35 | 2 | 5.7 | 35 | 2 | 5.7 | 0 | 0 | 0.0 |
| Unknown | 533 | 17 | 3.2 | 529 | 17 | 3.2 | 0 | 0 | 0.0 |

*Includes missing values for gender.

^Numbers may not sum to the total due to non-inclusive categories.

Table 17a. Chlamydia positivity among females at San Fernando Juvenile Hall, by race and age group, 2005.

| | 10-14 | | | 15-19 | | | 20-24 | | | 25-29 | | |
|-----------------------|-------|----------|----------|-------|----------|----------|-------|----------|----------|--------|----------|----------|
| | Total | (N) | % | Total | (N) | % | Total | (N) | % | Total | (N) | % |
| | | Positive | Positive | | Positive | Positive | | Positive | Positive | | Positive | Positive |
| Total Females | 119 | 17 | 14.3 | 1,097 | 141 | 12.9 | 5 | 1 | 20.0 | 0 | 0 | 0.0 |
| Race/Ethnicity | | | | | | | | | | | | |
| White | 6 | 1 | 16.7 | 123 | 11 | 8.9 | 0 | 0 | 0.0 | 0 | 0 | 0.0 |
| Black | 36 | 8 | 22.2 | 210 | 41 | 19.5 | 0 | 0 | 0.0 | 0 | 0 | 0.0 |
| Asian/PI | 0 | 0 | 0.0 | 12 | 5 | 41.7 | 0 | 0 | 0.0 | 0 | 0 | 0.0 |
| Hispanic | 42 | 3 | 7.1 | 367 | 37 | 10.1 | 1 | 0 | 0.0 | 0 | 0 | 0.0 |
| Am.Ind/N.Alask | 0 | 0 | 0.0 | 1 | 0 | 0.0 | 0 | 0 | 0.0 | 0 | 0 | 0.0 |
| Other | 0 | 0 | 0.0 | 9 | 2 | 22.2 | 0 | 0 | 0.0 | 0 | 0 | 0.0 |
| Unknown | 35 | 5 | 14.3 | 375 | 45 | 12.0 | 4 | 1 | 25.0 | 0 | 0 | 0.0 |
| | 30-34 | | | 35-39 | | | 40+ | | | Total* | | |
| | Total | (N) | % | Total | (N) | % | Total | (N) | % | Total | (N) | % |
| | | Positive | Positive | | Positive | Positive | | Positive | Positive | | Positive | Positive |
| Total Females | 0 | 0 | 0.0 | 0 | 0 | 0.0 | 0 | 0 | 0.0 | 1,221 | 159 | 13.0 |
| Race/Ethnicity | | | | | | | | | | | | |
| White | 0 | 0 | 0.0 | 0 | 0 | 0.0 | 0 | 0 | 0.0 | 129 | 12 | 9.3 |
| Black | 0 | 0 | 0.0 | 0 | 0 | 0.0 | 0 | 0 | 0.0 | 246 | 49 | 19.9 |
| Asian/PI | 0 | 0 | 0.0 | 0 | 0 | 0.0 | 0 | 0 | 0.0 | 12 | 5 | 41.7 |
| Hispanic | 0 | 0 | 0.0 | 0 | 0 | 0.0 | 0 | 0 | 0.0 | 410 | 40 | 9.8 |
| Am.Ind/N.Alask | 0 | 0 | 0.0 | 0 | 0 | 0.0 | 0 | 0 | 0.0 | 1 | 0 | 0.0 |
| Other | 0 | 0 | 0.0 | 0 | 0 | 0.0 | 0 | 0 | 0.0 | 9 | 2 | 22.2 |
| Unknown | 0 | 0 | 0.0 | 0 | 0 | 0.0 | 0 | 0 | 0.0 | 414 | 51 | 12.3 |

*Includes missing values for age group.

Table 17b. Chlamydia positivity among males at San Fernando Juvenile Hall, by race and age group, 2005.

| | 10-14 | | | 15-19 | | | 20-24 | | | 25-29 | | |
|-----------------------|-------|----------|----------|-------|----------|----------|-------|----------|----------|--------|----------|----------|
| | Total | (N) | % | Total | (N) | % | Total | (N) | % | Total | (N) | % |
| | | Positive | Positive | | Positive | Positive | | Positive | Positive | | Positive | Positive |
| Total Males | 424 | 2 | 0.5 | 3,492 | 154 | 4.4 | 16 | 2 | 12.5 | 0 | 0 | 0.0 |
| Race/Ethnicity | | | | | | | | | | | | |
| White | 37 | 0 | 0.0 | 358 | 6 | 1.7 | 1 | 0 | 0.0 | 0 | 0 | 0.0 |
| Black | 105 | 1 | 1.0 | 704 | 56 | 8.0 | 1 | 0 | 0.0 | 0 | 0 | 0.0 |
| Asian/PI | 5 | 0 | 0.0 | 39 | 0 | 0.0 | 0 | 0 | 0.0 | 0 | 0 | 0.0 |
| Hispanic | 216 | 0 | 0.0 | 1,846 | 58 | 3.1 | 2 | 0 | 0.0 | 0 | 0 | 0.0 |
| Am.Ind/N.Alask | 0 | 0 | 0.0 | 9 | 0 | 0.0 | 0 | 0 | 0.0 | 0 | 0 | 0.0 |
| Other | 1 | 0 | 0.0 | 28 | 0 | 0.0 | 0 | 0 | 0.0 | 0 | 0 | 0.0 |
| Unknown | 60 | 1 | 1.7 | 508 | 34 | 6.7 | 12 | 2 | 16.7 | 0 | 0 | 0.0 |
| | 30-34 | | | 35-39 | | | 40+ | | | Total* | | |
| | Total | (N) | % | Total | (N) | % | Total | (N) | % | Total | (N) | % |
| | | Positive | Positive | | Positive | Positive | | Positive | Positive | | Positive | Positive |
| Total Males | 0 | 0 | 0.0 | 0 | 0 | 0.0 | 0 | 0 | 0.0 | 3,932 | 158 | 4.0 |
| Race/Ethnicity | | | | | | | | | | | | |
| White | 0 | 0 | 0.0 | 0 | 0 | 0.0 | 0 | 0 | 0.0 | 396 | 6 | 1.5 |
| Black | 0 | 0 | 0.0 | 0 | 0 | 0.0 | 0 | 0 | 0.0 | 810 | 57 | 7.0 |
| Asian/PI | 0 | 0 | 0.0 | 0 | 0 | 0.0 | 0 | 0 | 0.0 | 44 | 0 | 0.0 |
| Hispanic | 0 | 0 | 0.0 | 0 | 0 | 0.0 | 0 | 0 | 0.0 | 2,064 | 58 | 2.8 |
| Am.Ind/N.Alask | 0 | 0 | 0.0 | 0 | 0 | 0.0 | 0 | 0 | 0.0 | 9 | 0 | 0.0 |
| Other | 0 | 0 | 0.0 | 0 | 0 | 0.0 | 0 | 0 | 0.0 | 29 | 0 | 0.0 |
| Unknown | 0 | 0 | 0.0 | 0 | 0 | 0.0 | 0 | 0 | 0.0 | 580 | 37 | 6.4 |

*Includes missing values for age group.

Table 18a. Gonorrhea positivity among females at San Fernando Juvenile Hall, by race and age group, 2005.

| | 10-14 | | | 15-19 | | | 20-24 | | | 25-29 | | |
|-----------------------|-------|-----------------|---------------|-------|-----------------|---------------|-------|-----------------|---------------|--------|-----------------|---------------|
| | Total | (N) Positive | % Positive | Total | (N) Positive | % Positive | Total | (N) Positive | % Positive | Total | (N) Positive | % Positive |
| Total Females | 120 | 6 | 5.0 | 1,098 | 43 | 3.9 | 5 | 0 | 0.0 | 0 | 0 | 0.0 |
| Race/Ethnicity | | | | | | | | | | | | |
| White | 6 | 0 | 0.0 | 123 | 3 | 2.4 | 0 | 0 | 0.0 | 0 | 0 | 0.0 |
| Black | 36 | 2 | 5.6 | 210 | 23 | 11.0 | 0 | 0 | 0.0 | 0 | 0 | 0.0 |
| Asian/PI | 0 | 0 | 0.0 | 12 | 1 | 8.3 | 0 | 0 | 0.0 | 0 | 0 | 0.0 |
| Hispanic | 43 | 1 | 2.3 | 367 | 7 | 1.9 | 1 | 0 | 0.0 | 0 | 0 | 0.0 |
| Am.Ind/N.Alask | 0 | 0 | 0.0 | 1 | 0 | 0.0 | 0 | 0 | 0.0 | 0 | 0 | 0.0 |
| Other | 0 | 0 | 0.0 | 9 | 1 | 11.1 | 0 | 0 | 0.0 | 0 | 0 | 0.0 |
| Unknown | 35 | 3 | 8.6 | 376 | 8 | 2.1 | 4 | 0 | 0.0 | 0 | 0 | 0.0 |
| | 30-34 | | | 35-39 | | | 40+ | | | Total* | | |
| | Total | (N) Positive | % Positive | Total | (N) Positive | % Positive | Total | (N) Positive | % Positive | Total | (N) Positive | % Positive |
| Total Females | 0 | 0 | 0.0 | 0 | 0 | 0.0 | 0 | 0 | 0.0 | 1,223 | 49 | 4.0 |
| Race/Ethnicity | | | | | | | | | | | | |
| White | 0 | 0 | 0.0 | 0 | 0 | 0.0 | 0 | 0 | 0.0 | 129 | 3 | 2.3 |
| Black | 0 | 0 | 0.0 | 0 | 0 | 0.0 | 0 | 0 | 0.0 | 246 | 25 | 10.2 |
| Asian/PI | 0 | 0 | 0.0 | 0 | 0 | 0.0 | 0 | 0 | 0.0 | 12 | 1 | 8.3 |
| Hispanic | 0 | 0 | 0.0 | 0 | 0 | 0.0 | 0 | 0 | 0.0 | 411 | 8 | 1.9 |
| Am.Ind/N.Alask | 0 | 0 | 0.0 | 0 | 0 | 0.0 | 0 | 0 | 0.0 | 1 | 0 | 0.0 |
| Other | 0 | 0 | 0.0 | 0 | 0 | 0.0 | 0 | 0 | 0.0 | 9 | 1 | 11.1 |
| Unknown | 0 | 0 | 0.0 | 0 | 0 | 0.0 | 0 | 0 | 0.0 | 415 | 11 | 2.7 |

*Includes missing values for age group.

Table 18b. Gonorrhea positivity among males at San Fernando Juvenile Hall, by race and age group, 2005.

| | 10-14 | | | 15-19 | | | 20-24 | | | 25-29 | | |
|-----------------------|-------|-----------------|---------------|-------|-----------------|---------------|-------|-----------------|---------------|-------|-----------------|---------------|
| | Total | (N) Positive | % Positive | Total | (N) Positive | % Positive | Total | (N) Positive | % Positive | Total | (N) Positive | % Positive |
| Total Males | 424 | 1 | 0.2 | 3,494 | 20 | 0.6 | 16 | 0 | 0.0 | 0 | 0 | 0.0 |
| Race/Ethnicity | | | | | | | | | | | | |
| White | 37 | 0 | 0.0 | 358 | 1 | 0.3 | 1 | 0 | 0.0 | 0 | 0 | 0.0 |
| Black | 105 | 0 | 0.0 | 704 | 12 | 1.7 | 1 | 0 | 0.0 | 0 | 0 | 0.0 |
| Asian/PI | 5 | 0 | 0.0 | 39 | 0 | 0.0 | 0 | 0 | 0.0 | 0 | 0 | 0.0 |
| Hispanic | 216 | 0 | 0.0 | 1,848 | 4 | 0.2 | 2 | 0 | 0.0 | 0 | 0 | 0.0 |
| Am.Ind/N.Alask | 0 | 0 | 0.0 | 9 | 0 | 0.0 | 0 | 0 | 0.0 | 0 | 0 | 0.0 |
| Other | 1 | 0 | 0.0 | 28 | 0 | 0.0 | 0 | 0 | 0.0 | 0 | 0 | 0.0 |
| Unknown | 60 | 1 | 1.7 | 508 | 3 | 0.6 | 12 | 0 | 0.0 | 0 | 0 | 0.0 |
| | 30-34 | | | 35-39 | | | 40+ | | | Total | | |
| | Total | (N) Positive | % Positive | Total | (N) Positive | % Positive | Total | (N) Positive | % Positive | Total | (N) Positive | % Positive |
| Total Males | 0 | 0 | 0.0 | 0 | 0 | 0.0 | 0 | 0 | 0.0 | 3,934 | 21 | 0.5 |
| Race/Ethnicity | | | | | | | | | | | | |
| White | 0 | 0 | 0.0 | 0 | 0 | 0.0 | 0 | 0 | 0.0 | 396 | 1 | 0.3 |
| Black | 0 | 0 | 0.0 | 0 | 0 | 0.0 | 0 | 0 | 0.0 | 810 | 12 | 1.5 |
| Asian/PI | 0 | 0 | 0.0 | 0 | 0 | 0.0 | 0 | 0 | 0.0 | 44 | 0 | 0.0 |
| Hispanic | 0 | 0 | 0.0 | 0 | 0 | 0.0 | 0 | 0 | 0.0 | 2,066 | 4 | 0.2 |
| Am.Ind/N.Alask | 0 | 0 | 0.0 | 0 | 0 | 0.0 | 0 | 0 | 0.0 | 9 | 0 | 0.0 |
| Other | 0 | 0 | 0.0 | 0 | 0 | 0.0 | 0 | 0 | 0.0 | 29 | 0 | 0.0 |
| Unknown | 0 | 0 | 0.0 | 0 | 0 | 0.0 | 0 | 0 | 0.0 | 580 | 4 | 0.7 |

*Includes missing values for age group.

Table 19. Chlamydia screening of students at school based clinics, by gender, LACIPP, 2005.

| Characteristic | Total | | | Females | | | Males | | |
|--------------------------------------|----------|------------|------|----------|------------|------|----------|------------|------|
| | Tested N | Positive N | % | Tested N | Positive N | % | Tested N | Positive N | % |
| Total | 2,649 | 120 | 4.5 | 1,949 | 85 | 4.4 | 700 | 35 | 5.0 |
| School site | | | | | | | | | |
| Cal State Dominguez Hills | 729 | 30 | 4.1 | 520 | 23 | 4.4 | 209 | 7 | 3.3 |
| College of the Canyons | 407 | 28 | 6.9 | 316 | 18 | 5.7 | 91 | 10 | 11.0 |
| East LA College | 243 | 2 | 0.8 | 163 | 2 | 1.2 | 80 | 0 | 0.0 |
| El Camino College | 231 | 14 | 6.1 | 135 | 6 | 4.4 | 96 | 8 | 8.3 |
| LA Trade Tech College | 23 | 1 | 4.3 | 12 | 0 | 0.0 | 11 | 1 | 9.1 |
| Pasadena City College | 439 | 20 | 4.6 | 295 | 12 | 4.1 | 144 | 8 | 5.6 |
| Jordan High School | 131 | 13 | 9.9 | 128 | 13 | 10.2 | 3 | 0 | 0.0 |
| San Fernando High School | 446 | 12 | 2.7 | 380 | 11 | 2.9 | 66 | 1 | 1.5 |
| Age group | | | | | | | | | |
| 10-14 | 49 | 3 | 6.1 | 39 | 3 | 7.7 | 10 | 0 | 0.0 |
| 15-19 | 1,048 | 45 | 4.3 | 852 | 36 | 4.2 | 196 | 9 | 4.6 |
| 20-24 | 968 | 65 | 6.7 | 646 | 43 | 6.7 | 322 | 22 | 6.8 |
| 25-29 | 338 | 5 | 1.5 | 244 | 3 | 1.2 | 94 | 2 | 2.1 |
| 30-34 | 98 | 2 | 2.0 | 62 | 0 | 0.0 | 36 | 2 | 5.6 |
| 35-39 | 67 | 0 | 0.0 | 48 | 0 | 0.0 | 19 | 0 | 0.0 |
| 40+ | 70 | 0 | 0.0 | 49 | 0 | 0.0 | 21 | 0 | 0.0 |
| Unknown | 11 | 0 | 0.0 | 9 | 0 | 0.0 | 2 | 0 | 0.0 |
| Race/Ethnicity | | | | | | | | | |
| White | 392 | 15 | 3.8 | 273 | 8 | 2.9 | 119 | 7 | 5.9 |
| Black | 424 | 45 | 10.6 | 289 | 30 | 10.4 | 135 | 15 | 11.1 |
| Asian/PI | 334 | 11 | 3.3 | 251 | 6 | 2.4 | 83 | 5 | 6.0 |
| Hispanic | 1,352 | 46 | 3.4 | 1,035 | 38 | 3.7 | 317 | 8 | 2.5 |
| Am.Ind/N.Alask | 7 | 0 | 0.0 | 4 | 0 | 0.0 | 3 | 0 | 0.0 |
| Other | 109 | 3 | 2.8 | 73 | 3 | 4.1 | 36 | 0 | 0.0 |
| Unknown | 31 | 0 | 0.0 | 24 | 0 | 0.0 | 7 | 0 | 0.0 |
| STD symptoms | | | | | | | | | |
| Yes | 476 | 32 | 6.7 | 402 | 21 | 5.2 | 74 | 11 | 14.9 |
| No | 1,681 | 73 | 4.3 | 1,132 | 51 | 4.5 | 549 | 22 | 4.0 |
| Unknown | 492 | 15 | 3.0 | 415 | 13 | 3.1 | 77 | 2 | 2.6 |
| Specific symptoms[^] | | | | | | | | | |
| Abn vag/urethral discharge | 272 | 21 | 7.7 | 232 | 14 | 6.0 | 40 | 7 | 17.5 |
| Dysuria | 194 | 15 | 7.7 | 141 | 7 | 5.0 | 53 | 8 | 15.1 |
| Pelvic pain | 115 | 3 | 2.6 | 115 | 3 | 2.6 | 0 | 0 | 0.0 |
| Abn vag bleeding | 43 | 3 | 7.0 | 43 | 3 | 7.0 | 0 | 0 | 0.0 |
| Pregnant[^] | | | | | | | | | |
| Yes | 4 | 0 | 0.0 | 4 | 0 | 0.0 | 0 | 0 | 0.0 |
| No | 51 | 7 | 13.7 | 51 | 7 | 13.7 | 0 | 0 | 0.0 |
| Possible | 64 | 6 | 9.4 | 64 | 6 | 9.4 | 0 | 0 | 0.0 |
| Unknown | 1,830 | 72 | 3.9 | 1,830 | 72 | 3.9 | 0 | 0 | 0.0 |

[^]Numbers may not sum to the total due to non-inclusive categories.

Table 20. Gonorrhea screening of students at school based clinics by gender, LACIPP, 2005.

| Characteristic | Total | | | Females | | | Males | | |
|----------------------------|----------|------------|-----|----------|------------|-----|----------|------------|------|
| | Tested N | Positive N | % | Tested N | Positive N | % | Tested N | Positive N | % |
| Total | 2,649 | 14 | 0.5 | 1,949 | 7 | 0.4 | 700 | 7 | 1.0 |
| School site | | | | | | | | | |
| Cal State Dominguez Hills | 729 | 5 | 0.7 | 520 | 4 | 0.8 | 209 | 1 | 0.5 |
| College of the Canyons | 407 | 1 | 0.2 | 316 | 0 | 0.0 | 91 | 1 | 1.1 |
| East LA College | 243 | 0 | 0.0 | 163 | 0 | 0.0 | 80 | 0 | 0.0 |
| El Camino College | 231 | 4 | 1.7 | 135 | 1 | 0.7 | 96 | 3 | 3.1 |
| LA Trade Tech College | 23 | 0 | 0.0 | 12 | 0 | 0.0 | 11 | 0 | 0.0 |
| Pasadena City College | 439 | 1 | 0.2 | 295 | 0 | 0.0 | 144 | 1 | 0.7 |
| Jordan High School | 131 | 2 | 1.5 | 128 | 2 | 1.6 | 3 | 0 | 0.0 |
| San Fernando High School | 446 | 1 | 0.2 | 380 | 0 | 0.0 | 66 | 1 | 1.5 |
| Age group | | | | | | | | | |
| 10-14 | 49 | 0 | 0.0 | 39 | 0 | 0.0 | 10 | 0 | 0.0 |
| 15-19 | 1,048 | 6 | 0.6 | 852 | 4 | 0.5 | 196 | 2 | 1.0 |
| 20-24 | 968 | 6 | 0.6 | 646 | 3 | 0.5 | 322 | 3 | 0.9 |
| 25-29 | 338 | 2 | 0.6 | 244 | 0 | 0.0 | 94 | 2 | 2.1 |
| 30-34 | 98 | 0 | 0.0 | 62 | 0 | 0.0 | 36 | 0 | 0.0 |
| 35-39 | 67 | 0 | 0.0 | 48 | 0 | 0.0 | 19 | 0 | 0.0 |
| 40+ | 70 | 0 | 0.0 | 49 | 0 | 0.0 | 21 | 0 | 0.0 |
| Unknown | 11 | 0 | 0.0 | 9 | 0 | 0.0 | 2 | 0 | 0.0 |
| Race/Ethnicity | | | | | | | | | |
| White | 392 | 0 | 0.0 | 273 | 0 | 0.0 | 119 | 0 | 0.0 |
| Black | 424 | 6 | 1.4 | 289 | 4 | 1.4 | 135 | 2 | 1.5 |
| Asian/PI | 334 | 0 | 0.0 | 251 | 0 | 0.0 | 83 | 0 | 0.0 |
| Hispanic | 1,352 | 7 | 0.5 | 1,035 | 3 | 0.3 | 317 | 4 | 1.3 |
| Am.Ind/N.Alask | 7 | 0 | 0.0 | 4 | 0 | 0.0 | 3 | 0 | 0.0 |
| Other | 109 | 1 | 0.9 | 73 | 0 | 0.0 | 36 | 1 | 2.8 |
| Unknown | 31 | 0 | 0.0 | 24 | 0 | 0.0 | 7 | 0 | 0.0 |
| STD symptoms | | | | | | | | | |
| Yes | 476 | 10 | 2.1 | 402 | 4 | 1.0 | 74 | 6 | 8.1 |
| No | 1,681 | 3 | 0.2 | 1,132 | 3 | 0.3 | 549 | 0 | 0.0 |
| Unknown | 492 | 1 | 0.2 | 415 | 0 | 0.0 | 77 | 1 | 1.3 |
| Specific symptoms^ | | | | | | | | | |
| Abn vag/urethral discharge | 272 | 6 | 2.2 | 232 | 2 | 0.9 | 40 | 4 | 10.0 |
| Dysuria | 194 | 7 | 3.6 | 141 | 1 | 0.7 | 53 | 6 | 11.3 |
| Pelvic pain | 115 | 1 | 0.9 | 115 | 1 | 0.9 | 0 | 0 | 0.0 |
| Abn vag bleeding | 43 | 1 | 2.3 | 43 | 1 | 2.3 | 0 | 0 | 0.0 |
| Pregnant^ | | | | | | | | | |
| Yes | 4 | 0 | 0.0 | 4 | 0 | 0.0 | 0 | 0 | 0.0 |
| No | 51 | 2 | 3.9 | 51 | 2 | 3.9 | 0 | 0 | 0.0 |
| Possible | 64 | 0 | 0.0 | 64 | 0 | 0.0 | 0 | 0 | 0.0 |
| Unknown | 1,830 | 5 | 0.3 | 1,830 | 5 | 0.3 | 0 | 0 | 0.0 |

^Numbers may not sum to the total due to non-inclusive categories.

Table 21a. Chlamydia positivity among females at eight school based clinics*, by race and age group, 2005.

| | 10-14 | | | 15-19 | | | 20-24 | | | 25-29 | | |
|-----------------------|-------|----------|----------|-------|----------|----------|-------|----------|----------|---------|----------|----------|
| | Total | (N) % | | Total | (N) % | | Total | (N) % | | Total | (N) % | |
| | | Positive | Positive | | Positive | Positive | | Positive | Positive | | Positive | |
| Total Females | 39 | 3 | 7.7 | 852 | 36 | 4.2 | 646 | 43 | 6.7 | 244 | 3 | 1.2 |
| Race/Ethnicity | | | | | | | | | | | | |
| White | 0 | 0 | 0.0 | 95 | 5 | 5.3 | 109 | 3 | 2.8 | 34 | 0 | 0.0 |
| Black | 9 | 0 | 0.0 | 100 | 13 | 13.0 | 102 | 16 | 15.7 | 48 | 1 | 2.1 |
| Asian/PI | 0 | 0 | 0.0 | 49 | 1 | 2.0 | 121 | 5 | 4.1 | 46 | 0 | 0.0 |
| Hispanic | 30 | 3 | 10.0 | 562 | 16 | 2.8 | 285 | 17 | 6.0 | 96 | 2 | 2.1 |
| Am.Ind/N.Alask | 0 | 0 | 0.0 | 1 | 0 | 0.0 | 2 | 0 | 0.0 | 0 | 0 | 0.0 |
| Other | 0 | 0 | 0.0 | 32 | 1 | 3.1 | 20 | 2 | 10.0 | 16 | 0 | 0.0 |
| Unknown | 0 | 0 | 0.0 | 13 | 0 | 0.0 | 7 | 0 | 0.0 | 4 | 0 | 0.0 |
| | 30-34 | | | 35-39 | | | 40+ | | | Total** | | |
| | Total | (N) % | | Total | (N) % | | Total | (N) % | | Total | (N) % | |
| | | Positive | Positive | | Positive | Positive | | Positive | Positive | | Positive | Positive |
| Total Females | 62 | 0 | 0.0 | 48 | 0 | 0.0 | 49 | 0 | 0.0 | 1,949 | 85 | 4.4 |
| Race/Ethnicity | | | | | | | | | | | | |
| White | 10 | 0 | 0.0 | 9 | 0 | 0.0 | 16 | 0 | 0.0 | 273 | 8 | 2.9 |
| Black | 8 | 0 | 0.0 | 7 | 0 | 0.0 | 12 | 0 | 0.0 | 289 | 30 | 10.4 |
| Asian/PI | 13 | 0 | 0.0 | 10 | 0 | 0.0 | 9 | 0 | 0.0 | 251 | 6 | 2.4 |
| Hispanic | 28 | 0 | 0.0 | 20 | 0 | 0.0 | 11 | 0 | 0.0 | 1,035 | 38 | 3.7 |
| Am.Ind/N.Alask | 1 | 0 | 0.0 | 0 | 0 | 0.0 | 0 | 0 | 0.0 | 4 | 0 | 0.0 |
| Other | 2 | 0 | 0.0 | 2 | 0 | 0.0 | 1 | 0 | 0.0 | 73 | 3 | 4.1 |
| Unknown | 0 | 0 | 0.0 | 0 | 0 | 0.0 | 0 | 0 | 0.0 | 24 | 0 | 0.0 |

*School based clinics: Cal State Dominguez Hills, College of the Canyons, East Los Angeles College, El Camino College, Jordan High School, Los Angeles Trade Tech College, Pasadena City College, and San Fernando High School.

**Includes missing values for age group.

Table 21b. Chlamydia positivity among males at eight school based clinics*, by race and age group, 2005.

| | 10-14 | | | 15-19 | | | 20-24 | | | 25-29 | | |
|-----------------------|-------|----------|----------|-------|----------|----------|-------|----------|----------|---------|----------|----------|
| | Total | (N) % | | Total | (N) % | | Total | (N) % | | Total | (N) % | |
| | | Positive | Positive | | Positive | Positive | | Positive | Positive | | Positive | |
| Total Males | 10 | 0 | 0.0 | 196 | 9 | 4.6 | 322 | 22 | 6.8 | 94 | 2 | 2.1 |
| Race/Ethnicity | | | | | | | | | | | | |
| White | 0 | 0 | 0.0 | 31 | 3 | 9.7 | 57 | 4 | 7.0 | 15 | 0 | 0.0 |
| Black | 0 | 0 | 0.0 | 35 | 1 | 2.9 | 65 | 14 | 21.5 | 17 | 0 | 0.0 |
| Asian/PI | 0 | 0 | 0.0 | 13 | 1 | 7.7 | 41 | 3 | 7.3 | 17 | 1 | 5.9 |
| Hispanic | 10 | 0 | 0.0 | 103 | 4 | 3.9 | 136 | 1 | 0.7 | 40 | 1 | 2.5 |
| Am.Ind/N.Alask | 0 | 0 | 0.0 | 1 | 0 | 0.0 | 1 | 0 | 0.0 | 0 | 0 | 0.0 |
| Other | 0 | 0 | 0.0 | 9 | 0 | 0.0 | 21 | 0 | 0.0 | 4 | 0 | 0.0 |
| Unknown | 0 | 0 | 0.0 | 4 | 0 | 0.0 | 1 | 0 | 0.0 | 1 | 0 | 0.0 |
| | 30-34 | | | 35-39 | | | 40+ | | | Total** | | |
| | Total | (N) % | | Total | (N) % | | Total | (N) % | | Total | (N) % | |
| | | Positive | Positive | | Positive | Positive | | Positive | Positive | | Positive | Positive |
| Total Males | 36 | 2 | 5.6 | 19 | 0 | 0.0 | 21 | 0 | 0.0 | 700 | 35 | 5.0 |
| Race/Ethnicity | | | | | | | | | | | | |
| White | 4 | 0 | 0.0 | 5 | 0 | 0.0 | 7 | 0 | 0.0 | 119 | 7 | 5.9 |
| Black | 6 | 0 | 0.0 | 6 | 0 | 0.0 | 6 | 0 | 0.0 | 135 | 15 | 11.1 |
| Asian/PI | 4 | 0 | 0.0 | 3 | 0 | 0.0 | 5 | 0 | 0.0 | 83 | 5 | 6.0 |
| Hispanic | 19 | 2 | 10.5 | 4 | 0 | 0.0 | 3 | 0 | 0.0 | 317 | 8 | 2.5 |
| Am.Ind/N.Alask | 0 | 0 | 0.0 | 1 | 0 | 0.0 | 0 | 0 | 0.0 | 3 | 0 | 0.0 |
| Other | 2 | 0 | 0.0 | 0 | 0 | 0.0 | 0 | 0 | 0.0 | 36 | 0 | 0.0 |
| Unknown | 1 | 0 | 0.0 | 0 | 0 | 0.0 | 0 | 0 | 0.0 | 7 | 0 | 0.0 |

*School based clinics: Cal State Dominguez Hills, College of the Canyons, East Los Angeles College, El Camino College, Jordan High School, Los Angeles Trade Tech College, Pasadena City College, and San Fernando High School.

**Includes missing values for age group.

Table 22a. Gonorrhea positivity among females at eight school based clinics*, by race and age group, 2005.

| | 10-14 | | | 15-19 | | | 20-24 | | | 25-29 | | |
|-----------------------|-------|-----------------|---------------|-------|-----------------|---------------|-------|-----------------|---------------|---------|-----------------|---------------|
| | Total | (N) Positive | % Positive | Total | (N) Positive | % Positive | Total | (N) Positive | % Positive | Total | (N) Positive | % Positive |
| Total Females | 39 | 0 | 0.0 | 852 | 4 | 0.5 | 646 | 3 | 0.5 | 244 | 0 | 0.0 |
| Race/Ethnicity | | | | | | | | | | | | |
| White | 0 | 0 | 0.0 | 95 | 0 | 0.0 | 109 | 0 | 0.0 | 34 | 0 | 0.0 |
| Black | 9 | 0 | 0.0 | 100 | 2 | 2.0 | 102 | 2 | 2.0 | 48 | 0 | 0.0 |
| Asian/PI | 0 | 0 | 0.0 | 49 | 0 | 0.0 | 121 | 0 | 0.0 | 46 | 0 | 0.0 |
| Hispanic | 30 | 0 | 0.0 | 562 | 2 | 0.4 | 285 | 1 | 0.4 | 96 | 0 | 0.0 |
| Am.Ind/N.Alask | 0 | 0 | 0.0 | 1 | 0 | 0.0 | 2 | 0 | 0.0 | 0 | 0 | 0.0 |
| Other | 0 | 0 | 0.0 | 32 | 0 | 0.0 | 20 | 0 | 0.0 | 16 | 0 | 0.0 |
| Unknown | 0 | 0 | 0.0 | 13 | 0 | 0.0 | 7 | 0 | 0.0 | 4 | 0 | 0.0 |
| | 30-34 | | | 35-39 | | | 40+ | | | Total** | | |
| | Total | (N) Positive | % Positive | Total | (N) Positive | % Positive | Total | (N) Positive | % Positive | Total | (N) Positive | % Positive |
| Total Females | 62 | 0 | 0.0 | 48 | 0 | 0.0 | 49 | 0 | 0.0 | 1,949 | 7 | 0.4 |
| Race/Ethnicity | | | | | | | | | | | | |
| White | 10 | 0 | 0.0 | 9 | 0 | 0.0 | 16 | 0 | 0.0 | 273 | 0 | 0.0 |
| Black | 8 | 0 | 0.0 | 7 | 0 | 0.0 | 12 | 0 | 0.0 | 289 | 4 | 1.4 |
| Asian/PI | 13 | 0 | 0.0 | 10 | 0 | 0.0 | 9 | 0 | 0.0 | 251 | 0 | 0.0 |
| Hispanic | 28 | 0 | 0.0 | 20 | 0 | 0.0 | 11 | 0 | 0.0 | 1,035 | 3 | 0.3 |
| Am.Ind/N.Alask | 1 | 0 | 0.0 | 0 | 0 | 0.0 | 0 | 0 | 0.0 | 4 | 0 | 0.0 |
| Other | 2 | 0 | 0.0 | 2 | 0 | 0.0 | 1 | 0 | 0.0 | 73 | 0 | 0.0 |
| Unknown | 0 | 0 | 0.0 | 0 | 0 | 0.0 | 0 | 0 | 0.0 | 24 | 0 | 0.0 |

*School based clinics: Cal State Dominguez Hills, College of the Canyons, East Los Angeles College, El Camino College, Jordan High School, Los Angeles Trade Tech College, Pasadena City College, and San Fernando High School.

**Includes missing values for age group.

Table 22b. Gonorrhea positivity among males at eight school based clinics*, by race and age group, 2005.

| | 10-14 | | | 15-19 | | | 20-24 | | | 25-29 | | |
|-----------------------|-------|-----------------|---------------|-------|-----------------|---------------|-------|-----------------|---------------|---------|-----------------|---------------|
| | Total | (N) Positive | % Positive | Total | (N) Positive | % Positive | Total | (N) Positive | % Positive | Total | (N) Positive | % Positive |
| Total Males | 10 | 0 | 0.0 | 196 | 2 | 1.0 | 322 | 3 | 0.9 | 94 | 2 | 2.1 |
| Race/Ethnicity | | | | | | | | | | | | |
| White | 0 | 0 | 0.0 | 31 | 0 | 0.0 | 57 | 0 | 0.0 | 15 | 0 | 0.0 |
| Black | 0 | 0 | 0.0 | 35 | 2 | 5.7 | 65 | 0 | 0.0 | 17 | 0 | 0.0 |
| Asian/PI | 0 | 0 | 0.0 | 13 | 0 | 0.0 | 41 | 0 | 0.0 | 17 | 0 | 0.0 |
| Hispanic | 10 | 0 | 0.0 | 103 | 0 | 0.0 | 136 | 2 | 1.5 | 40 | 2 | 5.0 |
| Am.Ind/N.Alask | 0 | 0 | 0.0 | 1 | 0 | 0.0 | 1 | 0 | 0.0 | 0 | 0 | 0.0 |
| Other | 0 | 0 | 0.0 | 9 | 0 | 0.0 | 21 | 1 | 4.8 | 4 | 0 | 0.0 |
| Unknown | 0 | 0 | 0.0 | 4 | 0 | 0.0 | 1 | 0 | 0.0 | 1 | 0 | 0.0 |
| | 30-34 | | | 35-39 | | | 40+ | | | Total** | | |
| | Total | (N) Positive | % Positive | Total | (N) Positive | % Positive | Total | (N) Positive | % Positive | Total | (N) Positive | % Positive |
| Total Males | 36 | 0 | 0.0 | 19 | 0 | 0.0 | 21 | 0 | 0.0 | 700 | 7 | 1.0 |
| Race/Ethnicity | | | | | | | | | | | | |
| White | 4 | 0 | 0.0 | 5 | 0 | 0.0 | 7 | 0 | 0.0 | 119 | 0 | 0.0 |
| Black | 6 | 0 | 0.0 | 6 | 0 | 0.0 | 6 | 0 | 0.0 | 135 | 2 | 1.5 |
| Asian/PI | 4 | 0 | 0.0 | 3 | 0 | 0.0 | 5 | 0 | 0.0 | 83 | 0 | 0.0 |
| Hispanic | 19 | 0 | 0.0 | 4 | 0 | 0.0 | 3 | 0 | 0.0 | 317 | 4 | 1.3 |
| Am.Ind/N.Alask | 0 | 0 | 0.0 | 1 | 0 | 0.0 | 0 | 0 | 0.0 | 3 | 0 | 0.0 |
| Other | 2 | 0 | 0.0 | 0 | 0 | 0.0 | 0 | 0 | 0.0 | 36 | 1 | 2.8 |
| Unknown | 1 | 0 | 0.0 | 0 | 0 | 0.0 | 0 | 0 | 0.0 | 7 | 0 | 0.0 |

*School based clinics: Cal State Dominguez Hills, College of the Canyons, East Los Angeles College, El Camino College, Jordan High School, Los Angeles Trade Tech College, Pasadena City College, and San Fernando High School.

**Includes missing values for age group.

Table 23. Chlamydia and gonorrhea screening of patients at Harbor/UCLA, by gender, LACIPP, 2005.

| Characteristic | Total* | | | | | | | | Females | | | | | | Males | | | | | |
|----------------------------|--------|-------|-----------|------|--------|-------|-----------|-----|-----------|----------|------|-----------|----------|-----|-----------|----------|------|-----------|----------|------|
| | Tested | | Chlamydia | | Tested | | Gonorrhea | | Chlamydia | | | Gonorrhea | | | Chlamydia | | | Gonorrhea | | |
| | N | % | Positive | % | N | % | Positive | % | Tested | Positive | % | Tested | Positive | % | Tested | Positive | % | Tested | Positive | % |
| Total | 3,530 | 100.0 | 144 | 4.1 | 3,530 | 100.0 | 19 | 0.5 | 3,106 | 121 | 3.9 | 3,106 | 15 | 0.5 | 424 | 23 | 5.4 | 424 | 4 | 0.9 |
| Age group | | | | | | | | | | | | | | | | | | | | |
| 10-14 | 5 | 0.1 | 0 | 0.0 | 5 | 0.1 | 0 | 0.0 | 5 | 0 | 0.0 | 5 | 0 | 0.0 | 0 | 0 | 0.0 | 0 | 0 | 0.0 |
| 15-19 | 478 | 13.5 | 31 | 6.5 | 478 | 13.5 | 5 | 1.0 | 443 | 27 | 6.1 | 443 | 5 | 1.1 | 35 | 4 | 11.4 | 35 | 0 | 0.0 |
| 20-24 | 1,147 | 32.5 | 73 | 6.4 | 1,147 | 32.5 | 8 | 0.7 | 1,061 | 62 | 5.8 | 1,061 | 5 | 0.5 | 86 | 11 | 12.8 | 86 | 3 | 3.5 |
| 25-29 | 732 | 20.7 | 27 | 3.7 | 732 | 20.7 | 4 | 0.5 | 662 | 21 | 3.2 | 662 | 4 | 0.6 | 70 | 6 | 8.6 | 70 | 0 | 0.0 |
| 30-34 | 463 | 13.1 | 9 | 1.9 | 463 | 13.1 | 1 | 0.2 | 397 | 8 | 2.0 | 397 | 0 | 0.0 | 66 | 1 | 1.5 | 66 | 1 | 1.5 |
| 35-39 | 329 | 9.3 | 1 | 0.3 | 329 | 9.3 | 1 | 0.3 | 264 | 0 | 0.0 | 264 | 1 | 0.4 | 65 | 1 | 1.5 | 65 | 0 | 0.0 |
| 40+ | 366 | 10.4 | 3 | 0.8 | 366 | 10.4 | 0 | 0.0 | 265 | 3 | 1.1 | 265 | 0 | 0.0 | 101 | 0 | 0.0 | 101 | 0 | 0.0 |
| Unknown | 10 | 0.3 | 0 | 0.0 | 10 | 0.3 | 0 | 0.0 | 9 | 0 | 0.0 | 9 | 0 | 0.0 | 1 | 0 | 0.0 | 1 | 0 | 0.0 |
| Race/Ethnicity | | | | | | | | | | | | | | | | | | | | |
| White | 101 | 2.9 | 6 | 5.9 | 101 | 2.9 | 3 | 3.0 | 89 | 6 | 6.7 | 89 | 3 | 3.4 | 12 | 0 | 0.0 | 12 | 0 | 0.0 |
| Black | 136 | 3.9 | 18 | 13.2 | 136 | 3.9 | 4 | 2.9 | 122 | 16 | 13.1 | 122 | 3 | 2.5 | 14 | 2 | 14.3 | 14 | 1 | 7.1 |
| Asian/PI | 82 | 2.3 | 5 | 6.1 | 82 | 2.3 | 0 | 0.0 | 80 | 5 | 6.3 | 80 | 0 | 0.0 | 2 | 0 | 0.0 | 2 | 0 | 0.0 |
| Hispanic | 834 | 23.6 | 32 | 3.8 | 834 | 23.6 | 1 | 0.1 | 757 | 27 | 3.6 | 757 | 1 | 0.1 | 77 | 5 | 6.5 | 77 | 0 | 0.0 |
| Am.Ind/N.Alask | 0 | 0.0 | 0 | 0.0 | 0 | 0.0 | 0 | 0.0 | 0 | 0 | 0.0 | 0 | 0 | 0.0 | 0 | 0 | 0.0 | 0 | 0 | 0.0 |
| Other | 49 | 1.4 | 2 | 4.1 | 49 | 1.4 | 1 | 2.0 | 47 | 2 | 4.3 | 47 | 1 | 2.1 | 2 | 0 | 0.0 | 2 | 0 | 0.0 |
| Unknown | 2,328 | 65.9 | 81 | 3.5 | 2,328 | 65.9 | 10 | 0.4 | 2,011 | 65 | 3.2 | 2,011 | 7 | 0.3 | 317 | 16 | 5.0 | 317 | 3 | 0.9 |
| STD symptoms | | | | | | | | | | | | | | | | | | | | |
| Yes | 276 | 7.8 | 19 | 6.9 | 276 | 7.8 | 6 | 2.2 | 267 | 19 | 7.1 | 267 | 5 | 1.9 | 9 | 0 | 0.0 | 9 | 1 | 11.1 |
| No | 773 | 21.9 | 32 | 4.1 | 773 | 21.9 | 2 | 0.3 | 687 | 27 | 3.9 | 687 | 2 | 0.3 | 86 | 5 | 5.8 | 86 | 0 | 0.0 |
| Unknown | 2,481 | 70.3 | 93 | 3.7 | 2,481 | 70.3 | 11 | 0.4 | 2,152 | 75 | 3.5 | 2,152 | 8 | 0.4 | 329 | 18 | 5.5 | 329 | 3 | 0.9 |
| Specific symptoms # | | | | | | | | | | | | | | | | | | | | |
| Abn vag/urethral discharge | 0 | 0.0 | 0 | 0.0 | 0 | 0.0 | 0 | 0.0 | 0 | 0 | 0.0 | 0 | 0 | 0.0 | 0 | 0 | 0.0 | 0 | 0 | 0.0 |
| Dysuria | 0 | 0.0 | 0 | 0.0 | 0 | 0.0 | 0 | 0.0 | 0 | 0 | 0.0 | 0 | 0 | 0.0 | 0 | 0 | 0.0 | 0 | 0 | 0.0 |
| Pelvic pain | 0 | 0.0 | 0 | 0.0 | 0 | 0.0 | 0 | 0.0 | 0 | 0 | 0.0 | 0 | 0 | 0.0 | 0 | 0 | 0.0 | 0 | 0 | 0.0 |
| Abn vag bleeding | 0 | 0.0 | 0 | 0.0 | 0 | 0.0 | 0 | 0.0 | 0 | 0 | 0.0 | 0 | 0 | 0.0 | 0 | 0 | 0.0 | 0 | 0 | 0.0 |
| Pregnant^# | | | | | | | | | | | | | | | | | | | | |
| Yes | 0 | 0.0 | 0 | 0.0 | 0 | 0.0 | 0 | 0.0 | 0 | 0 | 0.0 | 0 | 0 | 0.0 | 0 | 0 | 0.0 | 0 | 0 | 0.0 |
| No | 0 | 0.0 | 0 | 0.0 | 0 | 0.0 | 0 | 0.0 | 0 | 0 | 0.0 | 0 | 0 | 0.0 | 0 | 0 | 0.0 | 0 | 0 | 0.0 |
| Possible | 0 | 0.0 | 0 | 0.0 | 0 | 0.0 | 0 | 0.0 | 0 | 0 | 0.0 | 0 | 0 | 0.0 | 0 | 0 | 0.0 | 0 | 0 | 0.0 |
| Unknown | 3,106 | 88.0 | 121 | 3.9 | 3,106 | 88.0 | 15 | 0.5 | 3,106 | 121 | 3.9 | 3,106 | 15 | 0.5 | 0 | 0 | 0.0 | 0 | 0 | 0.0 |

*Includes missing values for gender.

^Numbers may not sum to the total due to non-inclusive categories.

Variables not collected at this site.

Table 24a. Chlamydia positivity among females at Harbor/UCLA, by race and age group, 2005.

| | 10-14 | | | 15-19 | | | 20-24 | | | 25-29 | | |
|-----------------------|----------|----------|----------|----------|----------|----------|----------|----------|----------|----------|----------|----------|
| | Total | (N) | % | Total | (N) | % | Total | (N) | % | Total | (N) | % |
| | | Positive | Positive | | Positive | Positive | | Positive | Positive | | Positive | Positive |
| Total Females | 5 | 0 | 0.0 | 443 | 27 | 6.1 | 1,061 | 62 | 5.8 | 662 | 21 | 3.2 |
| Race/Ethnicity | | | | | | | | | | | | |
| White | 1 | 0 | 0.0 | 23 | 1 | 4.3 | 43 | 5 | 11.6 | 14 | 0 | 0.0 |
| Black | 0 | 0 | 0.0 | 32 | 11 | 34.4 | 39 | 4 | 10.3 | 26 | 1 | 3.8 |
| Asian/PI | 0 | 0 | 0.0 | 15 | 0 | 0.0 | 41 | 4 | 9.8 | 13 | 1 | 7.7 |
| Hispanic | 0 | 0 | 0.0 | 135 | 5 | 3.7 | 328 | 15 | 4.6 | 161 | 4 | 2.5 |
| Am.Ind/N.Alask | 0 | 0 | 0.0 | 0 | 0 | 0.0 | 0 | 0 | 0.0 | 0 | 0 | 0.0 |
| Other | 0 | 0 | 0.0 | 10 | 0 | 0.0 | 19 | 1 | 5.3 | 8 | 1 | 12.5 |
| Unknown | 4 | 0 | 0.0 | 228 | 10 | 4.4 | 591 | 33 | 5.6 | 440 | 14 | 3.2 |
| | 30-34 | | | 35-39 | | | 40+ | | | Total* | | |
| | Total | (N) | % | Total | (N) | % | Total | (N) | % | Total | (N) | % |
| | Positive | Positive | Positive | Positive | Positive | Positive | Positive | Positive | Positive | Positive | Positive | Positive |
| Total Females | 397 | 8 | 2.0 | 264 | 0 | 0.0 | 265 | 3 | 1.1 | 3,106 | 121 | 3.9 |
| Race/Ethnicity | | | | | | | | | | | | |
| White | 2 | 0 | 0.0 | 4 | 0 | 0.0 | 2 | 0 | 0.0 | 89 | 6 | 6.7 |
| Black | 12 | 0 | 0.0 | 8 | 0 | 0.0 | 5 | 0 | 0.0 | 122 | 16 | 13.1 |
| Asian/PI | 5 | 0 | 0.0 | 4 | 0 | 0.0 | 2 | 0 | 0.0 | 80 | 5 | 6.3 |
| Hispanic | 75 | 2 | 2.7 | 33 | 0 | 0.0 | 19 | 1 | 5.3 | 757 | 27 | 3.6 |
| Am.Ind/N.Alask | 0 | 0 | 0.0 | 0 | 0 | 0.0 | 0 | 0 | 0.0 | 0 | 0 | 0.0 |
| Other | 5 | 0 | 0.0 | 4 | 0 | 0.0 | 1 | 0 | 0.0 | 47 | 2 | 4.3 |
| Unknown | 298 | 6 | 2.0 | 211 | 0 | 0.0 | 236 | 2 | 0.8 | 2,011 | 65 | 3.2 |

*Includes missing values for age group.

Table 24b. Chlamydia positivity among males at Harbor/UCLA, by race and age group, 2005.

| | 10-14 | | | 15-19 | | | 20-24 | | | 25-29 | | |
|-----------------------|----------|----------|----------|----------|----------|----------|----------|----------|----------|----------|----------|----------|
| | Total | (N) | % | Total | (N) | % | Total | (N) | % | Total | (N) | % |
| | | Positive | Positive | | Positive | Positive | | Positive | Positive | | Positive | Positive |
| Total Males | 0 | 0 | 0.0 | 35 | 4 | 11.4 | 86 | 11 | 12.8 | 70 | 6 | 8.6 |
| Race/Ethnicity | | | | | | | | | | | | |
| White | 0 | 0 | 0.0 | 2 | 0 | 0.0 | 5 | 0 | 0.0 | 1 | 0 | 0.0 |
| Black | 0 | 0 | 0.0 | 3 | 2 | 66.7 | 5 | 0 | 0.0 | 0 | 0 | 0.0 |
| Asian/PI | 0 | 0 | 0.0 | 2 | 0 | 0.0 | 0 | 0 | 0.0 | 0 | 0 | 0.0 |
| Hispanic | 0 | 0 | 0.0 | 5 | 1 | 20.0 | 28 | 3 | 10.7 | 15 | 1 | 6.7 |
| Am.Ind/N.Alask | 0 | 0 | 0.0 | 0 | 0 | 0.0 | 0 | 0 | 0.0 | 0 | 0 | 0.0 |
| Other | 0 | 0 | 0.0 | 1 | 0 | 0.0 | 0 | 0 | 0.0 | 0 | 0 | 0.0 |
| Unknown | 0 | 0 | 0.0 | 22 | 1 | 4.5 | 48 | 8 | 16.7 | 54 | 5 | 9.3 |
| | 30-34 | | | 35-39 | | | 40+ | | | Total* | | |
| | Total | (N) | % | Total | (N) | % | Total | (N) | % | Total | (N) | % |
| | Positive | Positive | Positive | Positive | Positive | Positive | Positive | Positive | Positive | Positive | Positive | Positive |
| Total Males | 66 | 1 | 1.5 | 65 | 1 | 1.5 | 101 | 0 | 0.0 | 424 | 23 | 5.4 |
| Race/Ethnicity | | | | | | | | | | | | |
| White | 0 | 0 | 0.0 | 0 | 0 | 0.0 | 4 | 0 | 0.0 | 12 | 0 | 0.0 |
| Black | 1 | 0 | 0.0 | 2 | 0 | 0.0 | 3 | 0 | 0.0 | 14 | 2 | 14.3 |
| Asian/PI | 0 | 0 | 0.0 | 0 | 0 | 0.0 | 0 | 0 | 0.0 | 2 | 0 | 0.0 |
| Hispanic | 10 | 0 | 0.0 | 11 | 0 | 0.0 | 8 | 0 | 0.0 | 77 | 5 | 6.5 |
| Am.Ind/N.Alask | 0 | 0 | 0.0 | 0 | 0 | 0.0 | 0 | 0 | 0.0 | 0 | 0 | 0.0 |
| Other | 1 | 0 | 0.0 | 0 | 0 | 0.0 | 0 | 0 | 0.0 | 2 | 0 | 0.0 |
| Unknown | 54 | 1 | 1.9 | 52 | 1 | 1.9 | 86 | 0 | 0.0 | 317 | 16 | 5.0 |

*Includes missing values for age group.

Table 25a. Gonorrhea positivity among females at Harbor/UCLA, by race and age group, 2005.

| | 10-14 | | | 15-19 | | | 20-24 | | | 25-29 | | |
|-----------------------|----------|----------|----------|----------|----------|----------|----------|----------|----------|----------|----------|----------|
| | Total | (N) | % | Total | (N) | % | Total | (N) | % | Total | (N) | % |
| | | Positive | Positive | | Positive | Positive | | Positive | Positive | | Positive | Positive |
| Total Females | 5 | 0 | 0.0 | 443 | 5 | 1.1 | 1,061 | 5 | 0.5 | 662 | 4 | 0.6 |
| Race/Ethnicity | | | | | | | | | | | | |
| White | 1 | 0 | 0.0 | 23 | 2 | 8.7 | 43 | 1 | 2.3 | 14 | 0 | 0.0 |
| Black | 0 | 0 | 0.0 | 32 | 1 | 3.1 | 39 | 1 | 2.6 | 26 | 1 | 3.8 |
| Asian/PI | 0 | 0 | 0.0 | 15 | 0 | 0.0 | 41 | 0 | 0.0 | 13 | 0 | 0.0 |
| Hispanic | 0 | 0 | 0.0 | 135 | 1 | 0.7 | 328 | 0 | 0.0 | 161 | 0 | 0.0 |
| Am.Ind/N.Alask | 0 | 0 | 0.0 | 0 | 0 | 0.0 | 0 | 0 | 0.0 | 0 | 0 | 0.0 |
| Other | 0 | 0 | 0.0 | 10 | 0 | 0.0 | 19 | 1 | 5.3 | 8 | 0 | 0.0 |
| Unknown | 4 | 0 | 0.0 | 228 | 1 | 0.4 | 591 | 2 | 0.3 | 440 | 3 | 0.7 |
| | 30-34 | | | 35-39 | | | 40+ | | | Total* | | |
| | Total | (N) | % | Total | (N) | % | Total | (N) | % | Total | (N) | % |
| | Positive | Positive | Positive | Positive | Positive | Positive | Positive | Positive | Positive | Positive | Positive | Positive |
| Total Females | 397 | 0 | 0.0 | 264 | 1 | 0.4 | 265 | 0 | 0.0 | 3,106 | 15 | 0.5 |
| Race/Ethnicity | | | | | | | | | | | | |
| White | 2 | 0 | 0.0 | 4 | 0 | 0.0 | 2 | 0 | 0.0 | 89 | 3 | 3.4 |
| Black | 12 | 0 | 0.0 | 8 | 0 | 0.0 | 5 | 0 | 0.0 | 122 | 3 | 2.5 |
| Asian/PI | 5 | 0 | 0.0 | 4 | 0 | 0.0 | 2 | 0 | 0.0 | 80 | 0 | 0.0 |
| Hispanic | 75 | 0 | 0.0 | 33 | 0 | 0.0 | 19 | 0 | 0.0 | 757 | 1 | 0.1 |
| Am.Ind/N.Alask | 0 | 0 | 0.0 | 0 | 0 | 0.0 | 0 | 0 | 0.0 | 0 | 0 | 0.0 |
| Other | 5 | 0 | 0.0 | 4 | 0 | 0.0 | 1 | 0 | 0.0 | 47 | 1 | 2.1 |
| Unknown | 298 | 0 | 0.0 | 211 | 1 | 0.5 | 236 | 0 | 0.0 | 2,011 | 7 | 0.3 |

*Includes missing values for age group.

Table 25b. Gonorrhea positivity among males at Harbor/UCLA, by race and age group, 2005.

| | 10-14 | | | 15-19 | | | 20-24 | | | 25-29 | | |
|-----------------------|----------|----------|----------|----------|----------|----------|----------|----------|----------|----------|----------|----------|
| | Total | (N) | % | Total | (N) | % | Total | (N) | % | Total | (N) | % |
| | | Positive | Positive | | Positive | Positive | | Positive | Positive | | Positive | Positive |
| Total Males | 0 | 0 | 0.0 | 35 | 0 | 0.0 | 86 | 3 | 3.5 | 70 | 0 | 0.0 |
| Race/Ethnicity | | | | | | | | | | | | |
| White | 0 | 0 | 0.0 | 2 | 0 | 0.0 | 5 | 0 | 0.0 | 1 | 0 | 0.0 |
| Black | 0 | 0 | 0.0 | 3 | 0 | 0.0 | 5 | 1 | 20.0 | 0 | 0 | 0.0 |
| Asian/PI | 0 | 0 | 0.0 | 2 | 0 | 0.0 | 0 | 0 | 0.0 | 0 | 0 | 0.0 |
| Hispanic | 0 | 0 | 0.0 | 5 | 0 | 0.0 | 28 | 0 | 0.0 | 15 | 0 | 0.0 |
| Am.Ind/N.Alask | 0 | 0 | 0.0 | 0 | 0 | 0.0 | 0 | 0 | 0.0 | 0 | 0 | 0.0 |
| Other | 0 | 0 | 0.0 | 1 | 0 | 0.0 | 0 | 0 | 0.0 | 0 | 0 | 0.0 |
| Unknown | 0 | 0 | 0.0 | 22 | 0 | 0.0 | 48 | 2 | 4.2 | 54 | 0 | 0.0 |
| | 30-34 | | | 35-39 | | | 40+ | | | Total* | | |
| | Total | (N) | % | Total | (N) | % | Total | (N) | % | Total | (N) | % |
| | Positive | Positive | Positive | Positive | Positive | Positive | Positive | Positive | Positive | Positive | Positive | Positive |
| Total Males | 66 | 1 | 1.5 | 65 | 0 | 0.0 | 101 | 0 | 0.0 | 424 | 4 | 0.9 |
| Race/Ethnicity | | | | | | | | | | | | |
| White | 0 | 0 | 0.0 | 0 | 0 | 0.0 | 4 | 0 | 0.0 | 12 | 0 | 0.0 |
| Black | 1 | 0 | 0.0 | 2 | 0 | 0.0 | 3 | 0 | 0.0 | 14 | 1 | 7.1 |
| Asian/PI | 0 | 0 | 0.0 | 0 | 0 | 0.0 | 0 | 0 | 0.0 | 2 | 0 | 0.0 |
| Hispanic | 10 | 0 | 0.0 | 11 | 0 | 0.0 | 8 | 0 | 0.0 | 77 | 0 | 0.0 |
| Am.Ind/N.Alask | 0 | 0 | 0.0 | 0 | 0 | 0.0 | 0 | 0 | 0.0 | 0 | 0 | 0.0 |
| Other | 1 | 0 | 0.0 | 0 | 0 | 0.0 | 0 | 0 | 0.0 | 2 | 0 | 0.0 |
| Unknown | 54 | 1 | 1.9 | 52 | 0 | 0.0 | 86 | 0 | 0.0 | 317 | 3 | 0.9 |

*Includes missing values for age group.

Table 26. Chlamydia screening at Los Angeles County Health Centers by gender, LACIPP, 2005.

| Characteristic | Total* | | | Females | | | Males | | |
|----------------------------|-------------|-----------------------|------|-------------|-----------------------|------|-------------|-----------------------|------|
| | Tested N | Chlamydia Positive | % | Tested N | Chlamydia Positive | % | Tested N | Chlamydia Positive | % |
| Total | 33,180 | 4,016 | 12.1 | 12,043 | 1,559 | 12.9 | 21,112 | 2,457 | 11.6 |
| Health Center (HC) | | | | | | | | | |
| Antelope Valley HC | 659 | 132 | 20.0 | 305 | 55 | 18.0 | 353 | 77 | 21.8 |
| Burke HC | 716 | 48 | 6.7 | 178 | 15 | 8.4 | 538 | 33 | 6.1 |
| Central Health HC | 3,914 | 304 | 7.8 | 1,116 | 119 | 10.7 | 2,795 | 185 | 6.6 |
| Curtis Tucker HC | 4,235 | 557 | 13.2 | 1,693 | 192 | 11.3 | 2,541 | 365 | 14.4 |
| Glendale HC | 685 | 57 | 8.3 | 189 | 19 | 10.1 | 496 | 38 | 7.7 |
| Hollywood-Wilshire HC | 3,447 | 243 | 7.0 | 676 | 67 | 9.9 | 2,771 | 176 | 6.4 |
| Monrovia HC | 2,004 | 270 | 13.5 | 720 | 120 | 16.7 | 1,283 | 150 | 11.7 |
| North Hollywood HC | 1,357 | 157 | 11.6 | 374 | 56 | 15.0 | 976 | 101 | 10.3 |
| Pacoima HC | 705 | 56 | 7.9 | 213 | 12 | 5.6 | 492 | 44 | 8.9 |
| Pomona HC | 1,064 | 165 | 15.5 | 377 | 73 | 19.4 | 687 | 92 | 13.4 |
| Ruth Temple HC | 5,886 | 726 | 12.3 | 2,674 | 306 | 11.4 | 3,209 | 420 | 13.1 |
| South HC | 5,016 | 814 | 16.2 | 2,263 | 347 | 15.3 | 2,751 | 467 | 17.0 |
| Torrance HC | 824 | 119 | 14.4 | 297 | 45 | 15.2 | 527 | 74 | 14.0 |
| Whittier HC | 2,668 | 368 | 13.8 | 968 | 133 | 13.7 | 1,693 | 235 | 13.9 |
| Age group | | | | | | | | | |
| 10-14 | 72 | 29 | 40.3 | 56 | 26 | 46.4 | 16 | 3 | 18.8 |
| 15-19 | 3,431 | 935 | 27.3 | 1,926 | 551 | 28.6 | 1,504 | 384 | 25.5 |
| 20-24 | 7,994 | 1,453 | 18.2 | 3,254 | 590 | 18.1 | 4,736 | 863 | 18.2 |
| 25-29 | 6,264 | 763 | 12.2 | 1,987 | 227 | 11.4 | 4,276 | 536 | 12.5 |
| 30-34 | 4,586 | 363 | 7.9 | 1,352 | 73 | 5.4 | 3,234 | 290 | 9.0 |
| 35-39 | 3,779 | 230 | 6.1 | 1,178 | 51 | 4.3 | 2,596 | 179 | 6.9 |
| 40+ | 7,049 | 243 | 3.4 | 2,288 | 41 | 1.8 | 4,747 | 202 | 4.3 |
| Unknown | 5 | 0 | 0.0 | 2 | 0 | 0.0 | 3 | 0 | 0.0 |
| Race/Ethnicity | | | | | | | | | |
| White | 3,785 | 256 | 6.8 | 908 | 69 | 7.6 | 2,877 | 187 | 6.5 |
| Black | 13,675 | 1,917 | 14.0 | 5,678 | 673 | 11.9 | 7,993 | 1,244 | 15.6 |
| Asian/PI | 1,455 | 141 | 9.7 | 579 | 72 | 12.4 | 876 | 69 | 7.9 |
| Hispanic | 7,201 | 906 | 12.6 | 2,537 | 413 | 16.3 | 4,660 | 493 | 10.6 |
| Am.Ind/N.Alask | 0 | 0 | 0.0 | 0 | 0 | 0.0 | 0 | 0 | 0.0 |
| Other | 521 | 53 | 10.2 | 175 | 23 | 13.1 | 346 | 30 | 8.7 |
| Unknown | 6,543 | 743 | 11.4 | 2,166 | 309 | 14.3 | 4,360 | 434 | 10.0 |
| STD symptoms# | | | | | | | | | |
| Yes | 0 | 0 | 0.0 | 0 | 0 | 0.0 | 0 | 0 | 0.0 |
| No | 0 | 0 | 0.0 | 0 | 0 | 0.0 | 0 | 0 | 0.0 |
| Unknown | 33,180 | 4,016 | 12.1 | 12,043 | 1,559 | 12.9 | 21,112 | 2,457 | 11.6 |
| Specific symptoms# | | | | | | | | | |
| Abn vag/urethral discharge | 0 | 0 | 0.0 | 0 | 0 | 0.0 | 0 | 0 | 0.0 |
| Dysuria | 0 | 0 | 0.0 | 0 | 0 | 0.0 | 0 | 0 | 0.0 |
| Pelvic pain | 0 | 0 | 0.0 | 0 | 0 | 0.0 | 0 | 0 | 0.0 |
| Abn vag bleeding | 0 | 0 | 0.0 | 0 | 0 | 0.0 | 0 | 0 | 0.0 |
| Pregnant^# | | | | | | | | | |
| Yes | 0 | 0 | 0.0 | 0 | 0 | 0.0 | 0 | 0 | 0.0 |
| No | 0 | 0 | 0.0 | 0 | 0 | 0.0 | 0 | 0 | 0.0 |
| Possible | 0 | 0 | 0.0 | 0 | 0 | 0.0 | 0 | 0 | 0.0 |
| Unknown | 12,068 | 1,559 | 12.9 | 12,043 | 1,559 | 12.9 | 0 | 0 | 0.0 |

*Includes missing values for gender.

Variables not collected at this site.

^Numbers may not sum to the total due to non-inclusive categories.

Table 27. Gonorrhea screening at Los Angeles County Health Centers by gender, LACIPP, 2005.

| Characteristic | Total* | | | Females | | | Males | | |
|----------------------------|----------|--------------------|------|----------|--------------------|------|----------|--------------------|------|
| | Tested N | Gonorrhea Positive | % | Tested N | Gonorrhea Positive | % | Tested N | Gonorrhea Positive | % |
| Total | 33,408 | 2,257 | 6.8 | 12,122 | 525 | 4.3 | 21,261 | 1,731 | 8.1 |
| Health Center (HC) | | | | | | | | | |
| Antelope Valley HC | 662 | 50 | 7.6 | 306 | 25 | 8.2 | 355 | 25 | 7.0 |
| Burke HC | 717 | 15 | 2.1 | 179 | 3 | 1.7 | 538 | 12 | 2.2 |
| Central Health HC | 3,930 | 170 | 4.3 | 1,110 | 37 | 3.3 | 2,817 | 133 | 4.7 |
| Curtis Tucker HC | 4,278 | 301 | 7.0 | 1,718 | 74 | 4.3 | 2,559 | 227 | 8.9 |
| Glendale HC | 689 | 11 | 1.6 | 190 | 3 | 1.6 | 499 | 8 | 1.6 |
| Hollywood-Wilshire HC | 3,461 | 234 | 6.8 | 676 | 12 | 1.8 | 2,785 | 222 | 8.0 |
| Monrovia HC | 1,994 | 55 | 2.8 | 718 | 12 | 1.7 | 1,275 | 43 | 3.4 |
| North Hollywood HC | 1,358 | 72 | 5.3 | 374 | 15 | 4.0 | 977 | 57 | 5.8 |
| Pacoima | 719 | 29 | 4.0 | 224 | 3 | 1.3 | 495 | 26 | 5.3 |
| Pamona | 1,069 | 35 | 3.3 | 377 | 8 | 2.1 | 692 | 27 | 3.9 |
| Ruth Temple HC | 5,978 | 485 | 8.1 | 2,701 | 138 | 5.1 | 3,274 | 347 | 10.6 |
| South HC | 5,035 | 647 | 12.9 | 2,269 | 149 | 6.6 | 2,764 | 497 | 18.0 |
| Torrance HC | 828 | 34 | 4.1 | 300 | 8 | 2.7 | 528 | 26 | 4.9 |
| Whittier HC | 2,690 | 119 | 4.4 | 980 | 38 | 3.9 | 1,703 | 81 | 4.8 |
| Age group | | | | | | | | | |
| 10-14 | 72 | 7 | 9.7 | 56 | 6 | 10.7 | 16 | 1 | 6.3 |
| 15-19 | 3,450 | 398 | 11.5 | 1,936 | 165 | 8.5 | 1,513 | 233 | 15.4 |
| 20-24 | 8,045 | 628 | 7.8 | 3,279 | 203 | 6.2 | 4,762 | 424 | 8.9 |
| 25-29 | 6,322 | 427 | 6.8 | 2,002 | 61 | 3.0 | 4,319 | 366 | 8.5 |
| 30-34 | 4,618 | 275 | 6.0 | 1,364 | 27 | 2.0 | 3,254 | 248 | 7.6 |
| 35-39 | 3,799 | 195 | 5.1 | 1,179 | 31 | 2.6 | 2,615 | 164 | 6.3 |
| 40+ | 7,097 | 327 | 4.6 | 2,304 | 32 | 1.4 | 4,779 | 295 | 6.2 |
| Unknown | 5 | 0 | 0.0 | 2 | 0 | 0.0 | 3 | 0 | 0.0 |
| Race/Ethnicity | | | | | | | | | |
| White | 3,796 | 156 | 4.1 | 908 | 26 | 2.9 | 2,888 | 130 | 4.5 |
| Black | 13,789 | 1,528 | 11.1 | 5,711 | 345 | 6.0 | 8,074 | 1,182 | 14.6 |
| Asian/PI | 1,459 | 28 | 1.9 | 585 | 9 | 1.5 | 874 | 19 | 2.2 |
| Hispanic | 7,256 | 196 | 2.7 | 2,564 | 53 | 2.1 | 4,688 | 143 | 3.1 |
| Am.Ind/N.Alask | 0 | 0 | 0.0 | 0 | 0 | 0.0 | 0 | 0 | 0.0 |
| Other | 530 | 24 | 4.5 | 179 | 8 | 4.5 | 351 | 16 | 4.6 |
| Unknown | 6,578 | 325 | 4.9 | 2,175 | 84 | 3.9 | 4,386 | 241 | 5.5 |
| STD symptoms# | | | | | | | | | |
| Yes | 0 | 0 | 0.0 | 0 | 0 | 0.0 | 0 | 0 | 0.0 |
| No | 0 | 0 | 0.0 | 0 | 0 | 0.0 | 0 | 0 | 0.0 |
| Unknown | 33,408 | 2,257 | 6.8 | 12,122 | 525 | 4.3 | 21,261 | 1,731 | 8.1 |
| Specific symptoms# | | | | | | | | | |
| Abn vag/urethral discharge | 0 | 0 | 0.0 | 0 | 0 | 0.0 | 0 | 0 | 0.0 |
| Dysuria | 0 | 0 | 0.0 | 0 | 0 | 0.0 | 0 | 0 | 0.0 |
| Pelvic pain | 0 | 0 | 0.0 | 0 | 0 | 0.0 | 0 | 0 | 0.0 |
| Abn vag bleeding | 0 | 0 | 0.0 | 0 | 0 | 0.0 | 0 | 0 | 0.0 |
| Pregnant^# | | | | | | | | | |
| Yes | 0 | 0 | 0.0 | 0 | 0 | 0.0 | 0 | 0 | 0.0 |
| No | 0 | 0 | 0.0 | 0 | 0 | 0.0 | 0 | 0 | 0.0 |
| Possible | 0 | 0 | 0.0 | 0 | 0 | 0.0 | 0 | 0 | 0.0 |
| Unknown | 12,147 | 526 | 4.3 | 12,122 | 525 | 4.3 | 0 | 0 | 0.0 |

*Includes missing values for gender.

Variables not collected at this site.

^Numbers may not sum to the total due to non-inclusive categories.

Table 28a. Chlamydia positivity among females at Los Angeles County Health Centers, by race and age group, 2005.

| | 10-14 | | | 15-19 | | | 20-24 | | | 25-29 | | |
|-----------------------|-------|-----------------|---------------|-------|-----------------|---------------|-------|-----------------|---------------|--------|-----------------|---------------|
| | Total | (N) Positive | % Positive | Total | (N) Positive | % Positive | Total | (N) Positive | % Positive | Total | (N) Positive | % Positive |
| Total Males | 56 | 26 | 46.4 | 1,926 | 551 | 28.6 | 3,254 | 590 | 18.1 | 1,987 | 227 | 11.4 |
| Race/Ethnicity | | | | | | | | | | | | |
| White | 3 | 1 | 33.3 | 110 | 23 | 20.9 | 240 | 25 | 10.4 | 177 | 11 | 6.2 |
| Black | 27 | 11 | 40.7 | 930 | 255 | 27.4 | 1,534 | 246 | 16.0 | 915 | 99 | 10.8 |
| Asian/PI | 1 | 0 | 0.0 | 58 | 11 | 19.0 | 190 | 31 | 16.3 | 133 | 15 | 11.3 |
| Hispanic | 10 | 6 | 60.0 | 397 | 151 | 38.0 | 596 | 152 | 25.5 | 386 | 62 | 16.1 |
| Am.Ind/N.Alask | 0 | 0 | 0.0 | 0 | 0 | 0.0 | 0 | 0 | 0.0 | 0 | 0 | 0.0 |
| Other | 0 | 0 | 0.0 | 27 | 7 | 25.9 | 58 | 11 | 19.0 | 33 | 1 | 3.0 |
| Unknown | 15 | 8 | 53.3 | 404 | 104 | 25.7 | 636 | 125 | 19.7 | 343 | 39 | 11.4 |
| | | | | | | | | | | | | |
| | 30-34 | | | 35-39 | | | 40+ | | | Total* | | |
| | Total | (N) Positive | % Positive | Total | (N) Positive | % Positive | Total | (N) Positive | % Positive | Total | (N) Positive | % Positive |
| Total Males | 1,352 | 73 | 5.4 | 1,178 | 51 | 4.3 | 2,288 | 41 | 1.8 | 12,043 | 1,559 | 12.9 |
| Race/Ethnicity | | | | | | | | | | | | |
| White | 111 | 5 | 4.5 | 66 | 2 | 3.0 | 201 | 2.0 | 1.0 | 908 | 69 | 7.6 |
| Black | 596 | 31 | 5.2 | 580 | 17 | 2.9 | 1,096 | 14.0 | 1.3 | 5,678 | 673 | 11.9 |
| Asian/PI | 80 | 9 | 11.3 | 41 | 3 | 7.3 | 76 | 3.0 | 3.9 | 579 | 72 | 12.4 |
| Hispanic | 307 | 17 | 5.5 | 286 | 14 | 4.9 | 554 | 11.0 | 2.0 | 2,537 | 413 | 16.3 |
| Am.Ind/N.Alask | 0 | 0 | 0.0 | 0 | 0 | 0.0 | 0 | 0.0 | 0.0 | 0 | 0 | 0.0 |
| Other | 13 | 0 | 0.0 | 10 | 0 | 0.0 | 34 | 4.0 | 11.8 | 175 | 23 | 13.1 |
| Unknown | 245 | 11 | 4.5 | 195 | 15 | 7.7 | 327 | 7.0 | 2.1 | 2,166 | 309 | 14.3 |

*Includes missing values for age group.

Table 28b. Chlamydia positivity among males at Los Angeles County Health Centers, by race and age group, 2005.

| | 10-14 | | | 15-19 | | | 20-24 | | | 25-29 | | |
|-----------------------|-------|-----------------|---------------|-------|-----------------|---------------|-------|-----------------|---------------|--------|-----------------|---------------|
| | Total | (N) Positive | % Positive | Total | (N) Positive | % Positive | Total | (N) Positive | % Positive | Total | (N) Positive | % Positive |
| Total Females | 16 | 3 | 18.8 | 1,504 | 384 | 25.5 | 4,736 | 863 | 18.2 | 4,276 | 536 | 12.5 |
| Race/Ethnicity | | | | | | | | | | | | |
| White | 1 | 0 | 0.0 | 120 | 7 | 5.8 | 607 | 60 | 9.9 | 622 | 56 | 9.0 |
| Black | 8 | 2 | 25.0 | 603 | 233 | 38.6 | 1,614 | 392 | 24.3 | 1,402 | 264 | 18.8 |
| Asian/PI | 0 | 0 | 0.0 | 27 | 2 | 7.4 | 239 | 16 | 6.7 | 179 | 12 | 6.7 |
| Hispanic | 4 | 1 | 25.0 | 413 | 85 | 20.6 | 1,088 | 189 | 17.4 | 981 | 107 | 10.9 |
| Am.Ind/N.Alask | 0 | 0 | 0.0 | 0 | 0 | 0.0 | 0 | 0 | 0.0 | 0 | 0 | 0.0 |
| Other | 0 | 0 | 0.0 | 31 | 4 | 12.9 | 94 | 14 | 14.9 | 104 | 4 | 3.8 |
| Unknown | 3 | 0 | 0.0 | 310 | 53 | 17.1 | 1,094 | 192 | 17.6 | 988 | 93 | 9.4 |
| | | | | | | | | | | | | |
| | 30-34 | | | 35-39 | | | 40+ | | | Total* | | |
| | Total | (N) Positive | % Positive | Total | (N) Positive | % Positive | Total | (N) Positive | % Positive | Total | (N) Positive | % Positive |
| Total Females | 3,234 | 290 | 9.0 | 2,596 | 179 | 6.9 | 4,747 | 202 | 4.3 | 21,112 | 2,457 | 11.6 |
| Race/Ethnicity | | | | | | | | | | | | |
| White | 402 | 17 | 4.2 | 387 | 18 | 4.7 | 737 | 29 | 3.9 | 2,877 | 187 | 6.5 |
| Black | 1,155 | 146 | 12.6 | 980 | 101 | 10.3 | 2,231 | 106 | 4.8 | 7,993 | 1,244 | 15.6 |
| Asian/PI | 189 | 23 | 12.2 | 100 | 2 | 2.0 | 142 | 14 | 9.9 | 876 | 69 | 7.9 |
| Hispanic | 733 | 60 | 8.2 | 560 | 27 | 4.8 | 880 | 24 | 2.7 | 4,660 | 493 | 10.6 |
| Am.Ind/N.Alask | 0 | 0 | 0.0 | 0 | 0 | 0.0 | 0 | 0 | 0.0 | 0 | 0 | 0.0 |
| Other | 39 | 3 | 7.7 | 34 | 1 | 2.9 | 44 | 4 | 9.1 | 346 | 30 | 8.7 |
| Unknown | 716 | 41 | 5.7 | 535 | 30 | 5.6 | 713 | 25 | 3.5 | 4,360 | 434 | 10.0 |

*Includes missing values for age group.

Table 29a. Gonorrhea positivity among females at Los Angeles County Health Centers, by race and age group, 2005.

| | 10-14 | | | 15-19 | | | 20-24 | | | 25-29 | | |
|-----------------------|-------|-----------------|------------|-------|-----------------|------------|-------|-----------------|------------|--------|-----------------|------------|
| | Total | (N) Positive | % Positive | Total | (N) Positive | % Positive | Total | (N) Positive | % Positive | Total | (N) Positive | % Positive |
| Total Females | 56 | 6 | 10.7 | 1,936 | 165 | 8.5 | 3,279 | 203 | 6.2 | 2,002 | 61 | 3.0 |
| Race/Ethnicity | | | | | | | | | | | | |
| White | 3 | 0 | 0.0 | 110 | 5 | 4.5 | 240 | 10 | 4.2 | 177 | 2 | 1.1 |
| Black | 27 | 2 | 7.4 | 935 | 108 | 11.6 | 1,548 | 130 | 8.4 | 913 | 45 | 4.9 |
| Asian/PI | 1 | 0 | 0.0 | 59 | 4 | 6.8 | 192 | 1 | 0.5 | 134 | 0 | 0.0 |
| Hispanic | 10 | 2 | 20.0 | 401 | 19 | 4.7 | 602 | 19 | 3.2 | 393 | 7 | 1.8 |
| Am.Ind/N.Alask | 0 | 0 | 0.0 | 0 | 0 | 0.0 | 0 | 0 | 0.0 | 0 | 0 | 0.0 |
| Other | 0 | 0 | 0.0 | 27 | 3 | 11.1 | 60 | 4 | 6.7 | 35 | 0 | 0.0 |
| Unknown | 15 | 2 | 13.3 | 404 | 26 | 6.4 | 637 | 39 | 6.1 | 350 | 7 | 2.0 |
| | 30-34 | | | 35-39 | | | 40+ | | | Total* | | |
| | Total | (N) Positive | % Positive | Total | (N) Positive | % Positive | Total | (N) Positive | % Positive | Total | (N) Positive | % Positive |
| Total Females | 1,364 | 27 | 2.0 | 1,179 | 31 | 2.6 | 2,304 | 32 | 1.4 | 12,122 | 525 | 4.3 |
| Race/Ethnicity | | | | | | | | | | | | |
| White | 111 | 2 | 1.8 | 65 | 3 | 4.6 | 202 | 4 | 2.0 | 908 | 26 | 2.9 |
| Black | 605 | 18 | 3.0 | 582 | 22 | 3.8 | 1,101 | 20 | 1.8 | 5,711 | 345 | 6.0 |
| Asian/PI | 81 | 0 | 0.0 | 41 | 3 | 7.3 | 77 | 1 | 1.3 | 585 | 9 | 1.5 |
| Hispanic | 311 | 4 | 1.3 | 288 | 0 | 0.0 | 558 | 2 | 0.4 | 2,564 | 53 | 2.1 |
| Am.Ind/N.Alask | 0 | 0 | 0.0 | 0 | 0 | 0.0 | 0 | 0 | 0.0 | 0 | 0 | 0.0 |
| Other | 13 | 0 | 0.0 | 10 | 1 | 10.0 | 34 | 0 | 0.0 | 179 | 8 | 4.5 |
| Unknown | 243 | 3 | 1.2 | 193 | 2 | 1.0 | 332 | 5 | 1.5 | 2,175 | 84 | 3.9 |

*Includes missing values for age group.

Table 29b. Gonorrhea positivity among males at Los Angeles County Health Centers, by race and age group, 2005.

| | 10-14 | | | 15-19 | | | 20-24 | | | 25-29 | | |
|-----------------------|-------|-----------------|------------|-------|-----------------|------------|-------|-----------------|------------|--------|-----------------|------------|
| | Total | (N) Positive | % Positive | Total | (N) Positive | % Positive | Total | (N) Positive | % Positive | Total | (N) Positive | % Positive |
| Total Males | 16 | 1 | 6.3 | 1,513 | 233 | 15.4 | 4,762 | 424 | 8.9 | 4,319 | 366 | 8.5 |
| Race/Ethnicity | | | | | | | | | | | | |
| White | 1 | 0 | 0.0 | 117 | 6 | 5.1 | 605 | 22 | 3.6 | 622 | 34 | 5.5 |
| Black | 8 | 1 | 12.5 | 612 | 188 | 30.7 | 1,627 | 291 | 17.9 | 1,424 | 228 | 16.0 |
| Asian/PI | 0 | 0 | 0.0 | 27 | 0 | 0.0 | 240 | 6 | 2.5 | 179 | 3 | 1.7 |
| Hispanic | 4 | 0 | 0.0 | 414 | 17 | 4.1 | 1,092 | 30 | 2.7 | 991 | 37 | 3.7 |
| Am.Ind/N.Alask | 0 | 0 | 0.0 | 0 | 0 | 0.0 | 0 | 0 | 0.0 | 0 | 0 | 0.0 |
| Other | 0 | 0 | 0.0 | 32 | 4 | 12.5 | 95 | 8 | 8.4 | 107 | 2 | 1.9 |
| Unknown | 3 | 0 | 0.0 | 311 | 18 | 5.8 | 1,103 | 67 | 6.1 | 996 | 62 | 6.2 |
| | 30-34 | | | 35-39 | | | 40+ | | | Total* | | |
| | Total | (N) Positive | % Positive | Total | (N) Positive | % Positive | Total | (N) Positive | % Positive | Total | (N) Positive | % Positive |
| Total Males | 3,254 | 248 | 7.6 | 2,615 | 164 | 6.3 | 4,779 | 295 | 6.2 | 21,261 | 1,731 | 8.1 |
| Race/Ethnicity | | | | | | | | | | | | |
| White | 404 | 15 | 3.7 | 393 | 19 | 4.8 | 745 | 34 | 4.6 | 2,888 | 130 | 4.5 |
| Black | 1,162 | 170 | 14.6 | 984 | 96 | 9.8 | 2,257 | 208 | 9.2 | 8,074 | 1,182 | 14.6 |
| Asian/PI | 189 | 5 | 2.6 | 100 | 2 | 2.0 | 139 | 3 | 2.2 | 874 | 19 | 2.2 |
| Hispanic | 743 | 25 | 3.4 | 561 | 17 | 3.0 | 882 | 17 | 1.9 | 4,688 | 143 | 3.1 |
| Am.Ind/N.Alask | 0 | 0 | 0.0 | 0 | 0 | 0.0 | 0 | 0 | 0.0 | 0 | 0 | 0.0 |
| Other | 39 | 1 | 2.6 | 34 | 0 | 0.0 | 44 | 1 | 2.3 | 351 | 16 | 4.6 |
| Unknown | 717 | 32 | 4.5 | 543 | 30 | 5.5 | 712 | 32 | 4.5 | 4,386 | 241 | 5.5 |

*Includes missing values for age group.

Appendix A: Technical Notes

Data Collection

Patients tested for chlamydia and gonorrhea at LACIPP sentinel sites (excluding Twin Towers Correctional Facility) are asked to fill out a questionnaire capturing demographic and behavioral data prior to submission of a urine specimen. In addition, clinic staff complete laboratory requisition forms to send with the specimens to Public Health Laboratory (PHL). All requisition forms and subsequent lab results are then entered into the MYSIS database by PHL clerical staff. STD Program staff match patient laboratory results with questionnaires and enter data into the sentinel site databases. These databases are cleaned and merged into one final dataset by STD Program Epidemiology staff. Quarterly cumulative data from this project are formatted according to CDC's Infertility Prevention Program (IPP) guidelines, and sent to the Region IX IPP data manager, and forwarded to the CDC. For women tested at Twin Towers Correctional Facility, only data from the laboratory requisition form are collected and entered into the database. Data from this site are merged with juvenile hall data and submitted to the Region IX IPP data manager as a separate detention data file.

Appendix B: Clinical Description of Chlamydia and Gonorrhea

CASE DEFINITIONS FOR REPORTABLE STDs

California State law (California Administrative Code, Title 17, Public Health, Section 2500, 1996) requires all health care providers to report selected communicable diseases to local health departments. Six of these diseases are reported directly to the County STD Program using the STD Confidential Morbidity Report (STD CMR, Rev. 1/94). These six include: chlamydia, gonorrhea, syphilis, non-gonococcal/non-chlamydial urethritis (NGU), non-gonococcal/non-chlamydial pelvic inflammatory disease, and chancroid. The following case definitions should assist physicians and other health care providers in the reporting process. The clinical description for each disease is brief; a more thorough discussion can be found in Sexually Transmitted Diseases (2nd Edition, 1990) by Holmes, et al. STD Program staff are available to answer any questions you may have concerning STD case definitions and STD reporting requirements. Three of the six most frequently reported STDs are diagnosed as follows:

CHLAMYDIA

1. Clinical description

Presence of mucopurulent cervical, urethral, or rectal discharge; epididymitis, salpingitis, or PID in adults; conjunctivitis or pneumonia in infants born to mothers with untreated infection. Asymptomatic infections are common.

2. Criteria for diagnosis

Laboratory identification of Chlamydia trachomatis infection by culture, antigen detection, or nucleic acid detection (amplified or non-amplified) methods.

GONORRHEA

1. Clinical description

Presence of purulent cervical, urethral, or rectal discharge; epididymitis, pharyngitis, salpingitis, or PID in adults; conjunctivitis in neonates born to mothers with untreated infection. Asymptomatic infections are common.

2. Criteria for diagnosis

Compatible clinical picture and sexual exposure to a person infected with N. gonorrhoeae, OR a, b, or c.

- a. Observation of Gram negative intracellular diplococci in urethral specimen from a male; b. Isolation of typical gram-negative, oxidase positive diplococci from a clinical specimen; and, c. Laboratory identification of *N. gonorrhoeae* infection by culture, antigen detection, or nucleic acid detection (amplified or non-amplified) methods



COUNTY OF LOS ANGELES
Public Health

Sexually Transmitted Disease Program

2615 South Grand Avenue, Room 500
Los Angeles, CA 90007
Tel: (213) 744-3070 Fax: (213) 749-9606

www.lapublichealth.org/std