

Transitioning Ryan White Clients to Healthy Way LA

Julie Cross, Consultant
Division of HIV and STD Programs

November 17, 2011



Section 1115 Waiver Overview

- November 2010: 1115 Waiver approved by CMS
- Waiver is designed to be a bridge to full implementation of health care reform in 2014
- Attempts to stabilize safety net provider systems
- Improves care coordination for certain vulnerable populations
- Expands coverage to uninsured adults



1115 Waiver Overview

Mandatory Medi-Cal Managed Care

- Mandatory enrollment in managed care for Medi-Cal eligible Seniors and Persons with Disabilities (SPD).

Low Income Health Programs (LIHPs)

- New health programs for un-insured/under-insured adults with low income.



Low Income Health Programs: Overview

- The Low Income Health Programs, or LIHPs, are health initiatives designed to extend health coverage to uninsured or underinsured adults;
- The focus of the LIHPs are to help counties identify their uninsured populations and to move these individuals into care prior to 2014;
- Programs vary by county;
- Los Angeles County's LIHP is called "Healthy Way LA";
- Healthy Way LA is administered by LA County Department of Health Services (DHS), Ryan White is administered by LA County Department of Public Health.



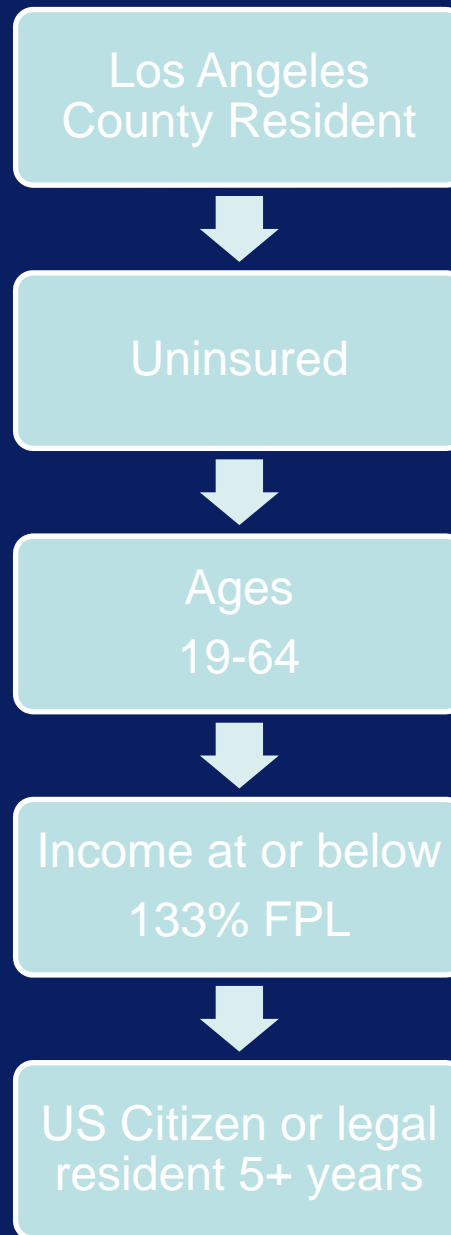
Healthy Way LA Eligibility

Individual must meet all of the eligibility requirements

Federal Poverty level: Income based on family size

<133% FPL for a single individual in 2011=
\$14,484 yr/\$1207 month

Uninsured clients who do not meet the eligibility criteria for HWLA will remain eligible for Ryan White supported care and ADAP



Ryan White

Payer of Last Resort Mandate



- Introduced in the 1990 authorization of the CARE Act and is found in Parts A, B, C, and F of the Act
- *“CARE Act grant funds cannot be used to make payments for any item or service if payment has been made, or can reasonably be expected to be made, with respect to that item or service under any State compensation program, under an insurance policy, or under any Federal or State health benefits program; or by an entity that provides prepaid health care”*



Low Income Health Programs and Persons with HIV



- **Guidance regarding LIHP coverage for persons with HIV**
- **HRSA Letter: August 9, 2011**

- **Payer of Last Resort:**
“Clients who are eligible for the LIHP under this waiver must be enrolled in the LIHP program”
- **Timing for Eligibility:**
“The standard recertification process for RW clients may be used”
- **LIHP Waiting lists:**
“HRSA does not require that RW clients be moved to the top of a LIHP waiting list”
- **Retroactive billing requirements**
- **RW Part D also under PLR mandate**



Transition Planning

- DHSP is preparing to transition approximately 5000 individuals from Ryan White supported medical care and ADAP to Healthy Way LA coverage
- Start date has yet to be determined. DHS needs time to develop key elements including pharmacy systems.
- Division of HIV and STD Programs (DHSP) internal workgroup
- Department of Public Health, Department of Health Services, Department of Mental Health joint workgroup
- Community meetings with Ryan White funded medical providers
- Transition plan submitted to California Office of AIDS November 15, 2011



How will clients transition to Healthy Way LA?

Procedure

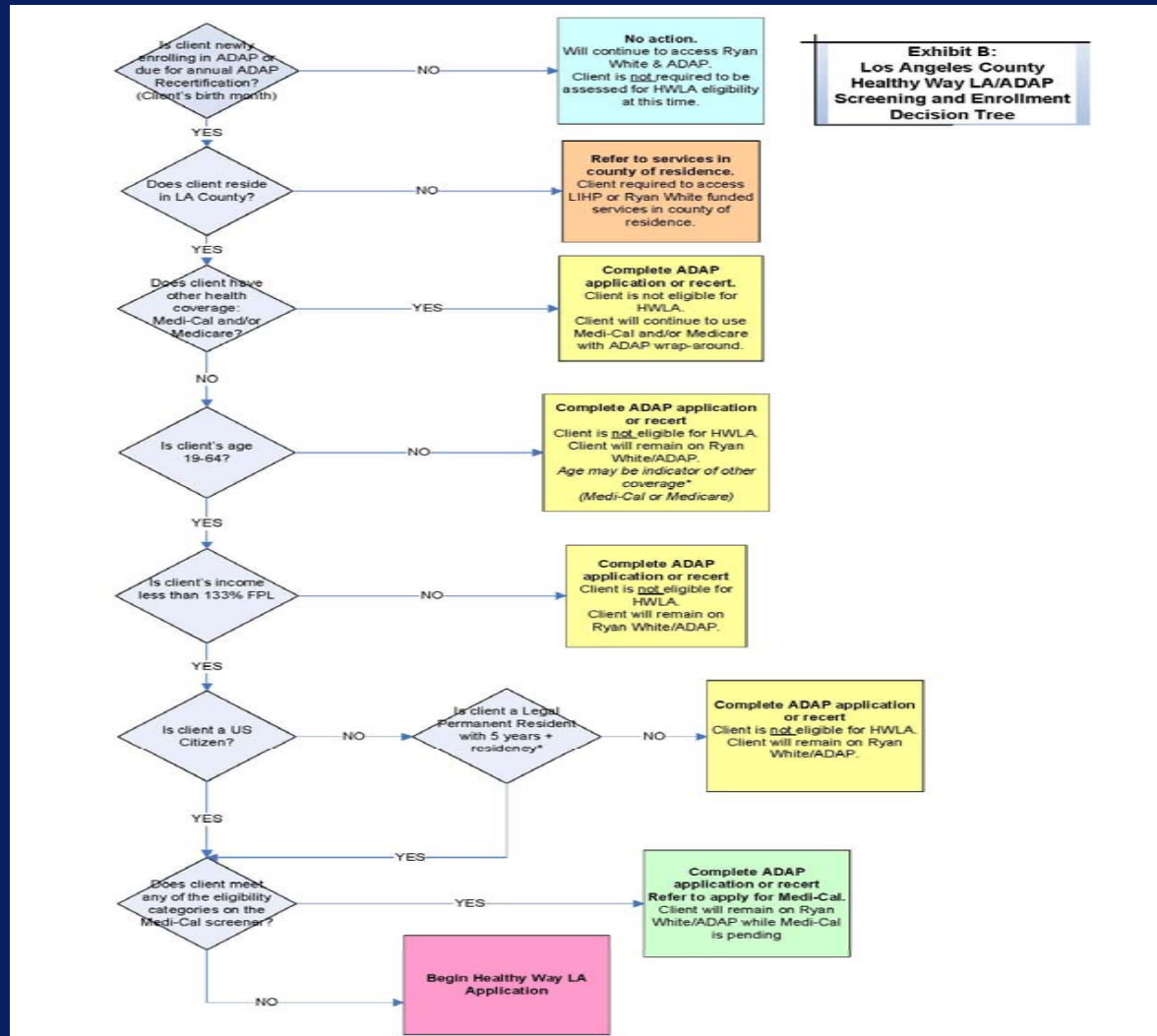
- Clients will be screened for HWLA eligibility at the time of their ADAP application or annual recertification (birth month);
- Los Angeles County ADAP Enrollment Workers will be cross trained to process HWLA applications;
- Contracted Benefits Specialists will assist with HWLA applications for clients not enrolled in ADAP.

Purpose

- Ensures provider continuity;
- Avoids having a “rushed” transition, clients will move to HWLA in their birth month;
- Face-to-face encounter in a familiar setting;
- We assume that clients will not elect to self-enroll, this proposal establishes a facilitated enrollment process for clients.



Healthy Way LA Screening and Enrollment



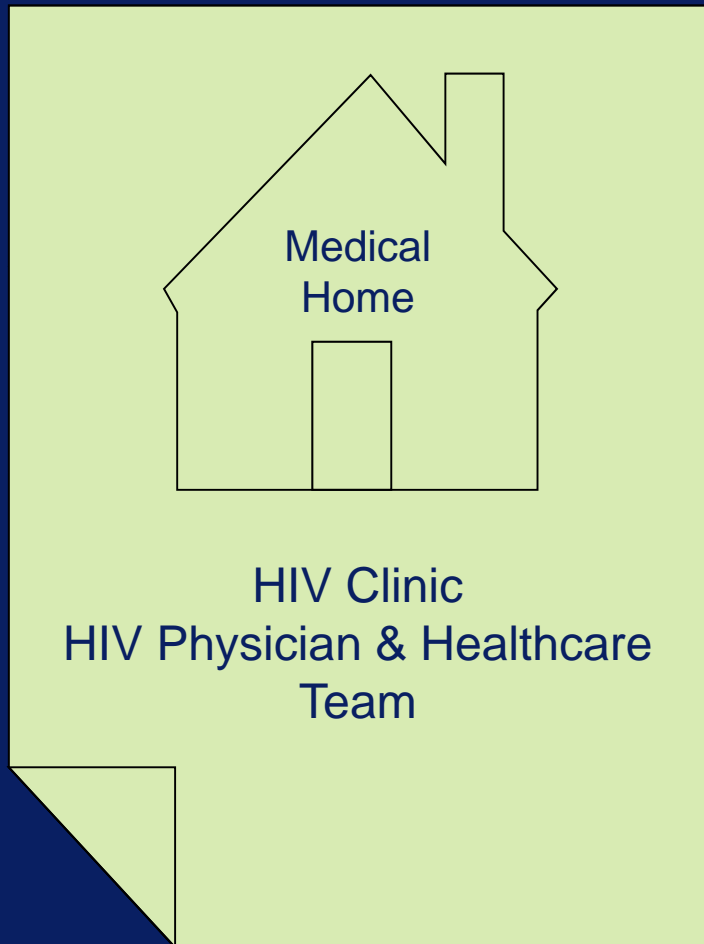
Healthy Way LA Enrollment



- Once fully enrolled in HWLA, clients will be required to receive medical services including prescription drug coverage and some mental health services through HWLA.
- DHSP is working with ADAP to ensure that ADAP remains in place until HWLA eligibility begins.



Health Way LA Service Delivery



Medical
Specialty
Services

Prescription
Drug Coverage

Psychiatric
Services*

Medical
Transportation



Healthy Way LA

Medical Homes and Primary Care

- DHS working to ensure that clients are able to continue to receive care from their current HIV medical provider/clinic;
- All Ryan White funded medical providers have been offered HWLA contracts;
- HWLA will allow HIV providers/clinics to serve as client's primary care provider or "medical home";
- HWLA coverage is free. There is no out-of-pocket cost or fee for care.



Benefit Comparison

	Healthy Way LA	Ryan White and ADAP
Coverage	Hospital, ER, outpatient, labs, test, specialty care	Outpatient, labs and some specialty care only
Physician/Clinics	Attempting to include the same providers/clinics currently covered under Ryan White	Supports 25 clinics in countywide
Medication Formulary	Covers medically necessary medications including HIV drugs	Covers approximately 200 medications
Formulary Appeals	Option for MD to appeal to have non-formulary drugs covered	No option to appeal to have non-formulary drugs covered



Healthy Way LA

HIV Pharmacy Services

- DHS' Chief Pharmacy Officer (CPO) is in the process of developing an HIV specific pharmacy network;
- Proposal is to work with a Contract Pharmacy Administrator to create an HIV pharmacy network;
- Pharmacy network will include Ryan White clinic pharmacies and some community pharmacies;
- Pharmacy network will be different from the network that clients currently access under ADAP (some clients will have to change pharmacies);
- More details will be shared as DHS finalizes their proposal.



Ryan White Wrap Around

- Ryan White will continue to be the payer for services not covered under Healthy Way LA:
 - Dental
 - Case management
 - Certain mental health services
 - Substance abuse treatment



Healthy Way LA Summary

Medical Provider

- We expect that clients will be able to continue to be seen by their current HIV medical providers
- Medical Home

Prescription Drug Coverage

- Clients will have expanded access to medications
- DHS is creating an HIV pharmacy program (clinic and community pharmacies)
- Some clients will have to change pharmacies

Improved access to medical care

- Medical specialty
- Inpatient (hospital) coverage
- Access to non-HIV related care and treatment
- Emergency Care
- Urgent Care
- Ambulance



Healthy Way LA Resources

- Healthy Way LA:
(877) 333-HWLA
<http://www.ladhs.org/wps/portal/HWLA>
- California Department of Public Health, Office of AIDS:
LIHP Materials
<http://www.cdph.ca.gov/programs/aids/Pages/OARyanWhiteDHCSLowIncomeHealthProgram.aspx>
- Los Angeles County, Department of Public Health, Division of HIV and STD Programs:
HIV and HWLA Materials
<http://www.lapublichealth.org/aids/HealthcareReform.htm>



HIV Provider Questions

HIV providers may e-mail their Healthy Way LA transition question to the following address:

hwlaproviderquestions@ph.lacounty.gov

Questions will responded to via a “frequently asked question” document that will be posted weekly on DHSP’s (OAPP’s) website.





Case Examples



Questions and Discussion



Division of HIV and STD Programs
600 South Commonwealth Avenue, 10th Floor
Los Angeles, California 90005-4001
Phone: (213) 351-8000
E-mail: jucross@ph.lacounty.gov

This presentation is available at
www.publichealth.lacounty.gov/aids

