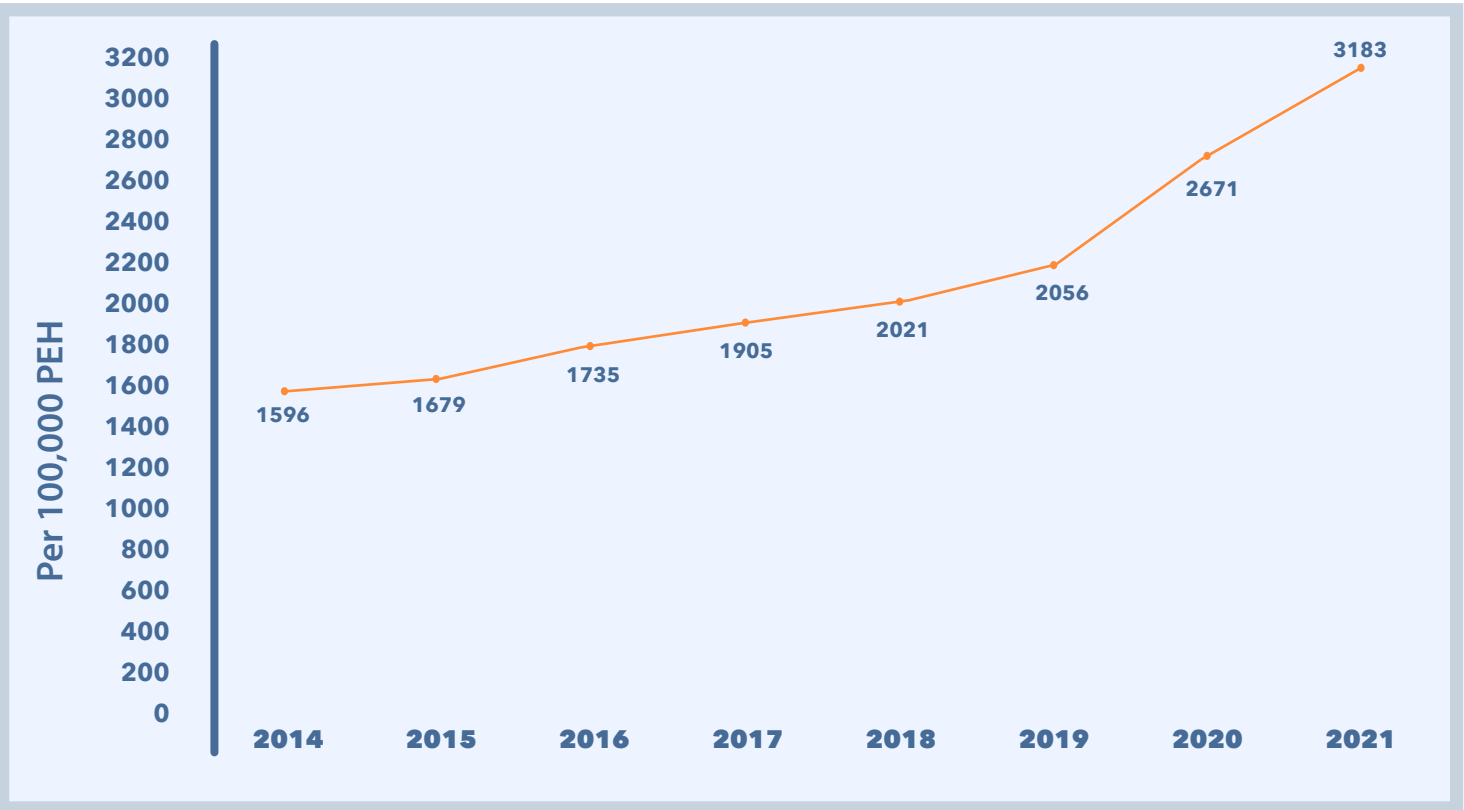


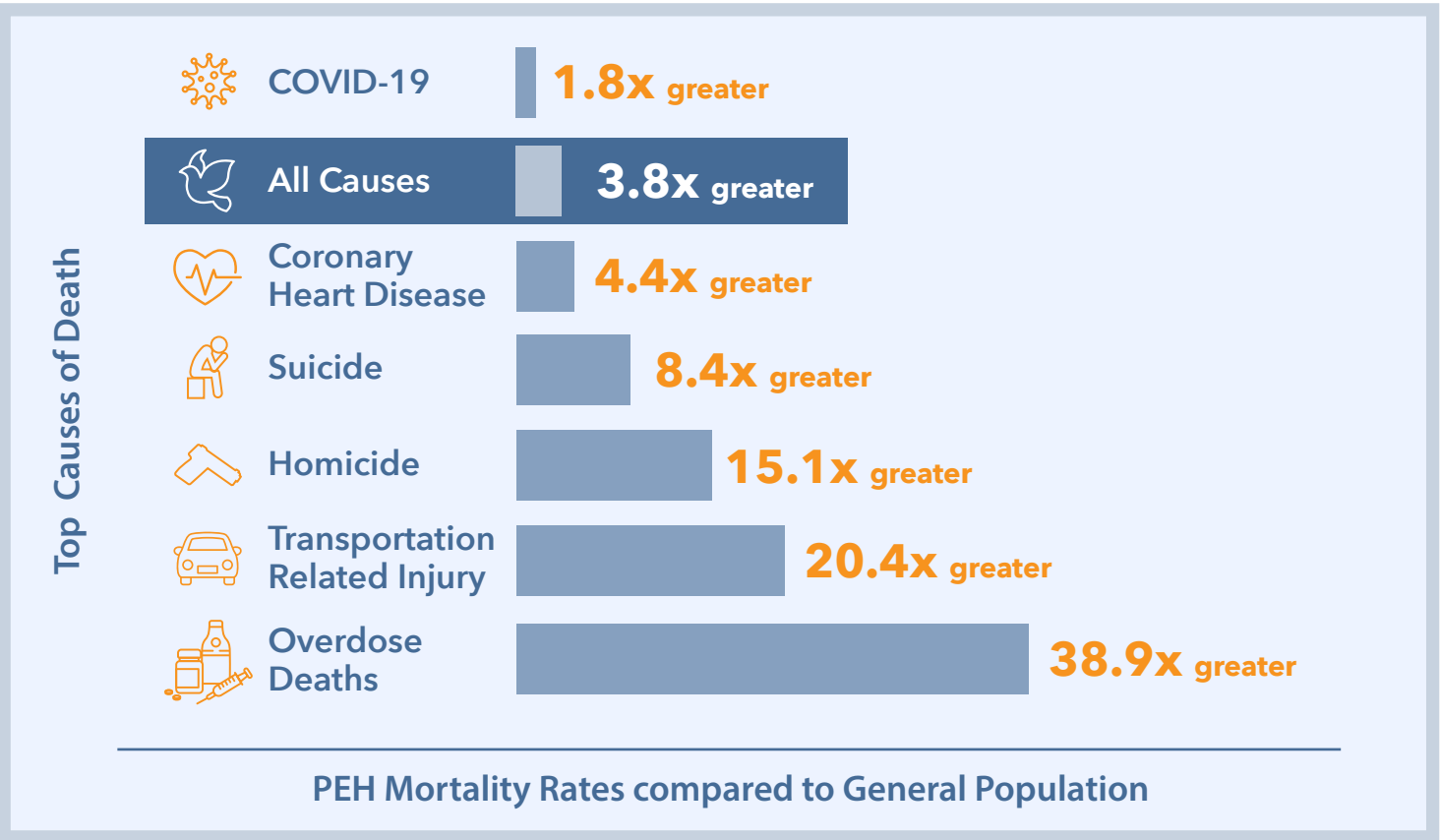
# Mortality Among People Experiencing Homelessness in Los Angeles County - 2014-2021

After increasing gradually from 1,596 per 100K in 2014 to 2,056 per 100K in 2019, the mortality rate among people experiencing homelessness (PEH) took a sharp upward turn in 2020 and 2021. From 2019 to 2021 the PEH mortality rate, which accounts for the total number of people experiencing homelessness each year, increased by 55%.

## Mortality rates among People Experiencing Homelessness in LA County, 2014-2021



## People Experiencing Homelessness Died from Different Causes at Rates Greater than the General Population in LA County

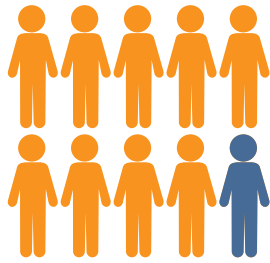


## People Experiencing Homelessness Overdose Deaths Involving Fentanyl 2019-2021

The percentage of overdose deaths involving fentanyl almost **TRIPLED** from **20% to 58%**

### Fentanyl is Rarely Used Alone

In 2021 **93%** of fentanyl-related deaths involved at least one other drug.



**71%** of fentanyl-related deaths also involved methamphetamine.

