

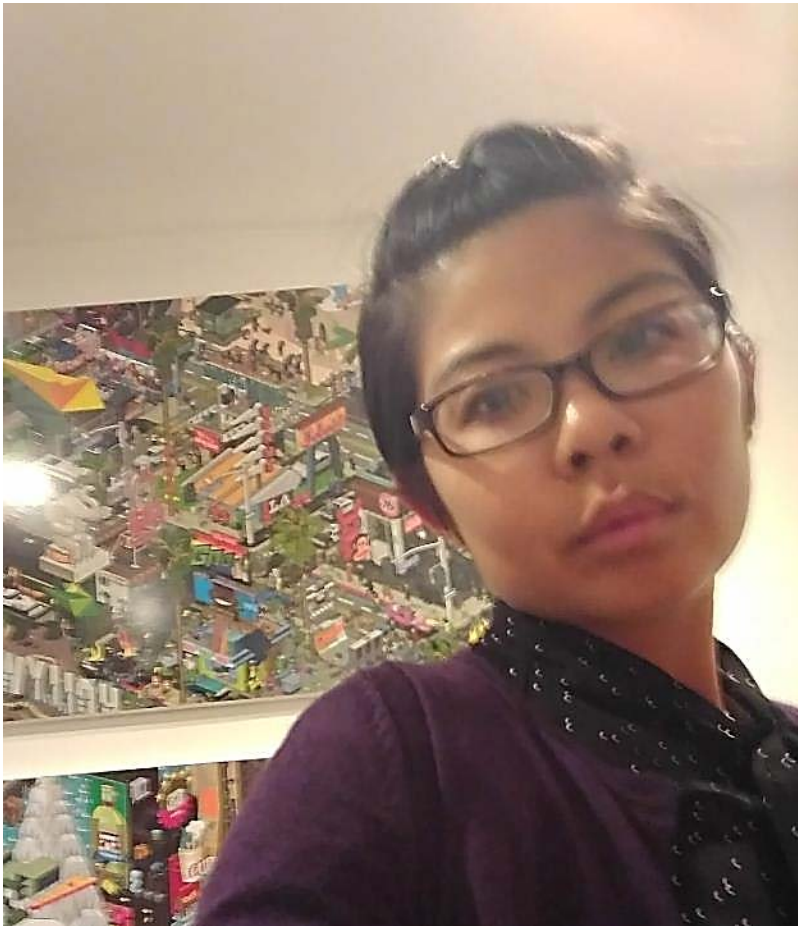


A Call to Action, Creating a Movement: The Center for Health Equity Action Plan

August 16, 2018

Health Agency Center for Health Equity

Facilitator



Heather Jue Northover

she/her/hers

**Director, Center for Health Equity,
Department of Public Health**



COUNTY OF LOS ANGELES

Public Health

Participate in our polling questions!

Go to www.menti.com and use the code 66 94 90



1

Grab your phone

www.menti.com

2

Go to www.menti.com



3

Enter the code 66 94 90 and vote!

Who's in the Room?

- a) Community members
- b) Community coalitions
- c) Non-profit organizations
- d) Faith-based organizations
- e) Healthcare partners
- f) Academic/Universities
- g) Funders
- h) Business partners
- i) Government entities



Speaker Introductions



Dr. Barbara Ferrer
she/her/hers
Director, Department of
Public Health



COUNTY OF LOS ANGELES

Public Health

Everyone deserves...

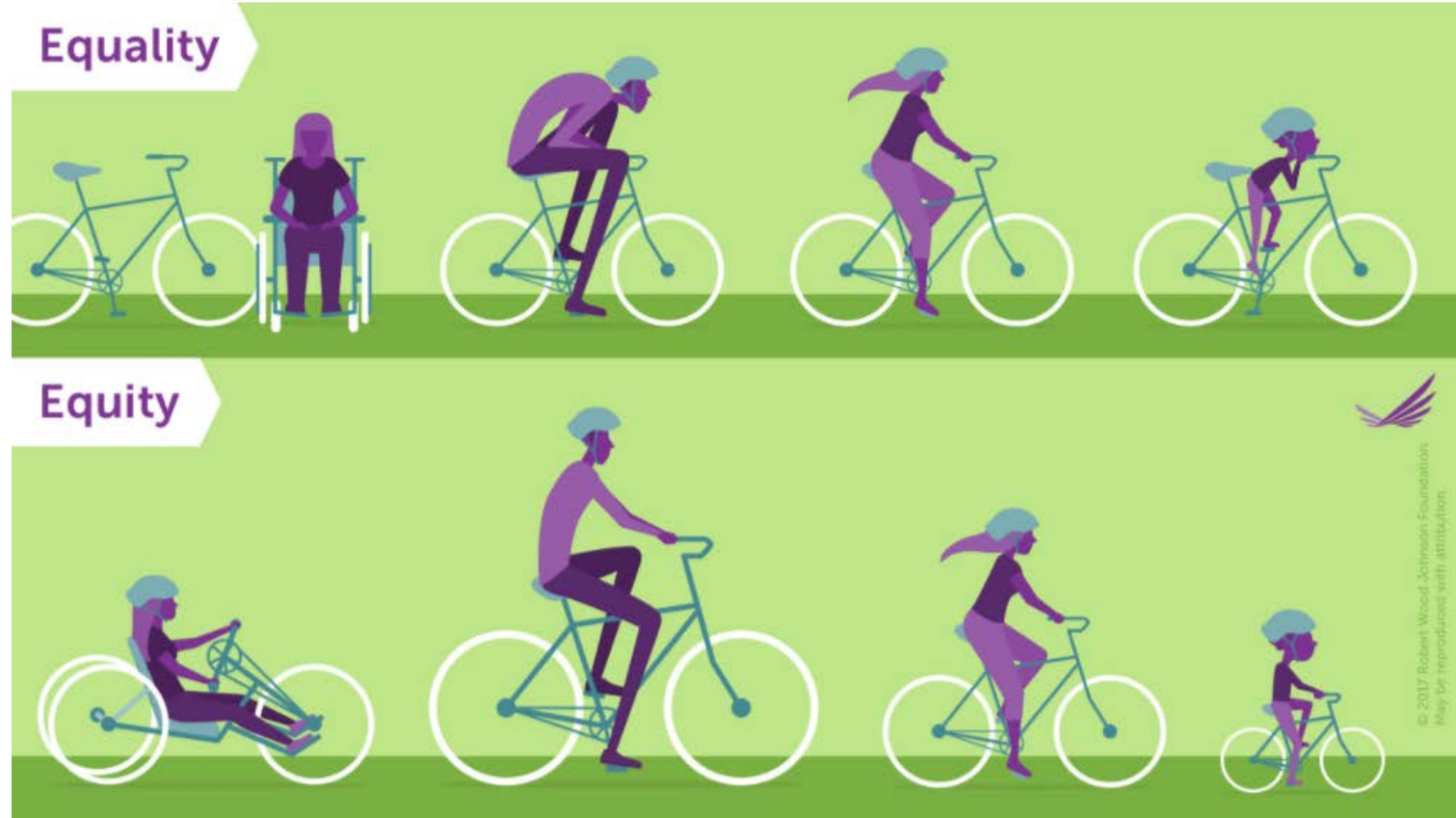
| | | | |
|--|--|--|--|
|  | Good schools |  | A thriving and inclusive economy |
|  | Safe and supportive neighborhoods |  | Strong social connections |
|  | Quality healthcare` |  | Sustainable, healthy environments |



6.5 years



12 years



Health Equity means that everyone has the opportunities and resources needed for optimal health and well-being



CENTER FOR HEALTH EQUITY

ACTION PLAN 2018-2023

The Action Plan

This plan is a call to action and seeks to grow a movement to advance health equity in LA County. As with all movements, it is driven by aspirations to change the status quo.

It won't be easy.

Our movement requires partnerships among County and community stakeholders across sectors and sustained effort over time. It will require the shared commitment, bold action and accountability of us all.

To succeed, we need to come together as collaborators and partners to reduce gaps in health outcomes that affect our most marginalized communities. We need your leadership, innovation and imagination to realize a SHARED vision for a better tomorrow.

Join the movement.

Center for Health Equity Strategic Priorities

Reduce/Eliminate Gaps in Health Outcomes



**Provide Useful
and Inclusive
Data**



**Support Policy
and Systems
Change**



**Cultivate Public,
Private and
Community
Partnerships**



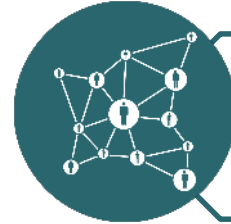
**Strengthen
Organizational
Readiness and
Capacity**



The Center's Key Focus Areas



Infant Mortality



**Sexually Transmitted
Infections**



Environmental Justice



Health Neighborhoods



**Institute of Cultural and
Linguistic Inclusion and
Responsiveness**

What focus area are you most interested in?

- a) Infant mortality
- b) Sexually transmitted diseases
- c) Environmental justice
- d) Health Neighborhoods
- e) Institute of Cultural and Linguistic Inclusion and Responsiveness
- f) I am interested in other areas of focus.



We Envision Fair and Just Health Outcomes

- All babies with an equal chance of surviving their first birthday
- No babies born with congenital syphilis
- Fair distribution of environmental benefits and burdens
- Neighborhoods that support optimal health and well being
- The delivery of quality, culturally and linguistically appropriate services to all



Speaker Introductions



Christina Altmayer

she/her/hers

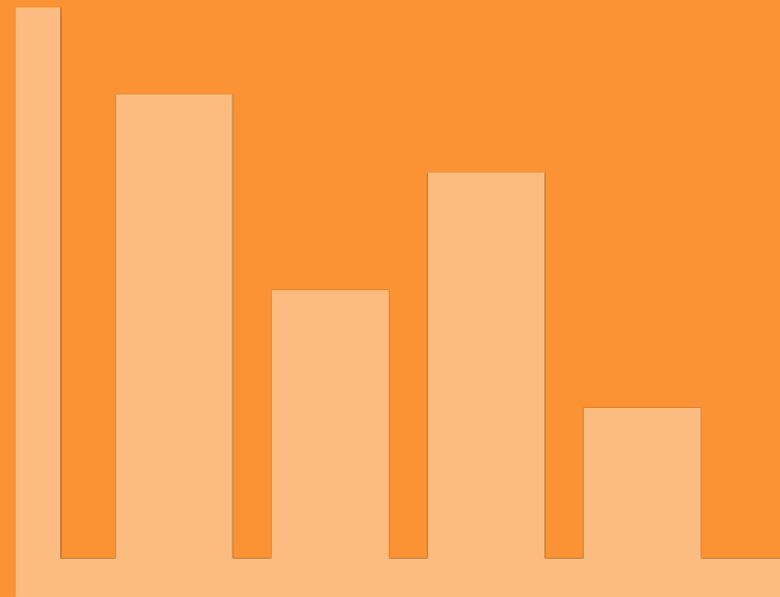
Vice President of Programs,

First 5 LA



We Envision Accessible, Useful and Inclusive Health Equity Data

- Ensure data highlight lived experiences and are accessible to communities
- Strengthen data that measures and explains inequities
- Mobilize data and research inform decision-making across sectors



We Envision Policy and System Change for the Equitable Distribution of Opportunity and Resources

- Transform health agency capacity, culture, and practice to promote a health in all policies lens
- Collaborate with others to support bold policies that advance health equity, and racial and social justice



We Envision Partnerships that Authentically Share Power and Respect Community Autonomy

- Create a culture of inclusive partner engagement and collaboration to create a movement for health equity
- Identify partnerships that result in equitable health outcomes
- Communicate health equity information simply and clearly



Speaker Introductions



Río Oxas

they/them/theirs

Policy & Programs Organizer,
People for Mobility Justice



We Envision Organizational Readiness and Capacity to Adopt a Just Culture and Advance Health Equity

- Ensure county advances opportunity and health equity for all
- Increase staff capacity to promote a health equity across the organization
- Increase language justice across the Health Agency



Speaker Introductions



Vincent Holmes

he/him/his

**Principle Analyst, Chief Executive
Office, County of Los Angeles**



In the next six months, I commit to (click all that apply):

- a) Partnering with the Center on one or more focus areas
- b) Adopting at least one of the plan's strategies
- c) Providing input on the draft Action Plan
- d) Attending a community forum
- e) Advertising the community forums
- f) Visiting the Center's website and/or joining the listserv





Select Language ▼

HEALTH EQUITY | FOCUS AREAS | ACTION PLAN | REPORTS | ABOUT US ▼ | CONNECT



Center for Health Equity

Check out our Website! <http://healthequity.lacounty.gov>
Email comments to lachealthequity@ph.lacounty.gov

Upcoming Center for Health Equity Community Forums

Antelope Valley

October 4th

1:00pm – 3:30pm

East LA Area

September 20th

9:00am – 11:30am

San Gabriel Valley

September 6th

9:00am – 11:30am

South Bay Area

September 27th

9:00am – 11:30am

West LA Area

October 18th

9:00am – 11:00am

In partnership with:

**Antelope Valley Health
Neighborhood**

Healthy San Gabriel Valley

YWCA San Gabriel Valley

The People Concern

Westside Coalition

***More dates will be announced as venues are confirmed**