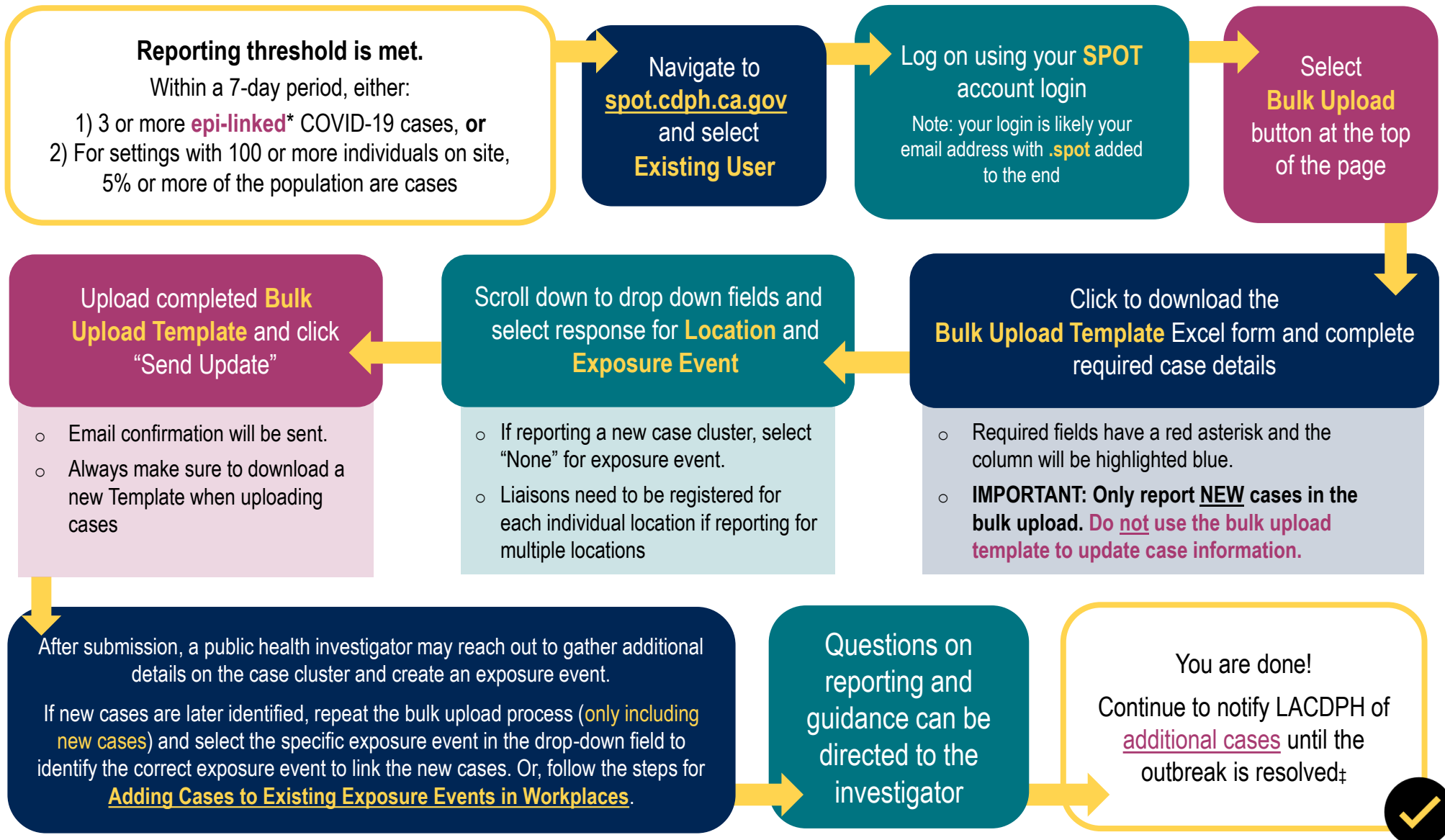


SPOT QUICK GUIDE FOR WORKPLACES[†]

BULK UPLOAD TEMPLATE - for reporting multiple COVID-19 cases



* Have a potential connection in time and place at the site
 ‡ Resolution occurs when no new cases are identified for 7 days

[†] Places of employment as defined by [Cal/OSHA COVID-19 Prevention Non-Emergency Regulations](#), section 3205(a)(2)(A)-(D)

Updated: March 21, 2024

STILL HAVE QUESTIONS?

Visit <http://www.publichealth.lacounty.gov/media/Coronavirus/>
 or email Communityoutbreak@ph.lacounty.gov

