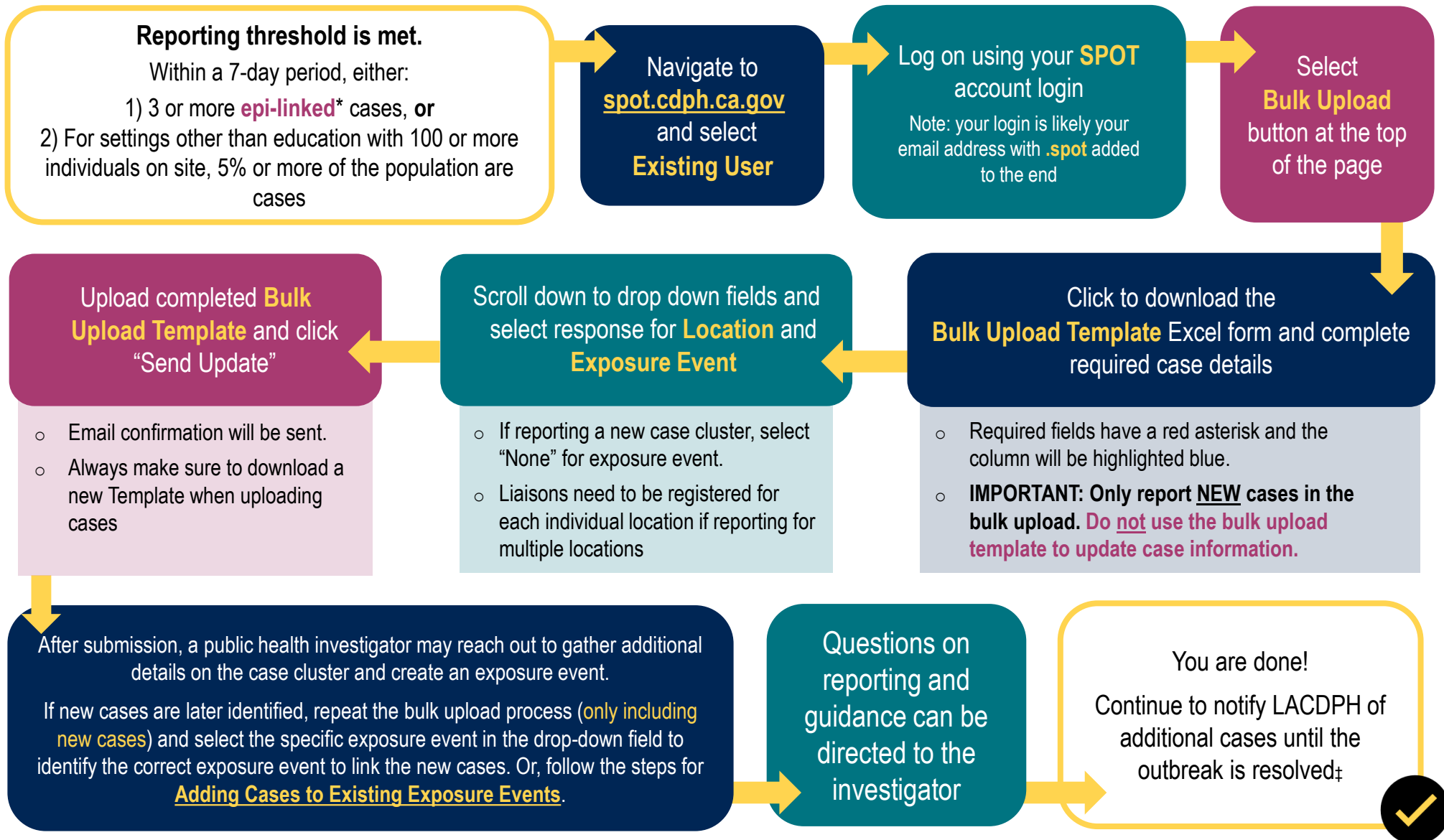


SPOT QUICK GUIDE FOR COMMUNITY SETTINGS[†]

BULK UPLOAD TEMPLATE - for reporting multiple COVID-19 cases



* Have a potential connection in time and place at the site

‡ Resolution occurs when no new cases are identified for 7 days

[†] Including education settings, workplaces, sites serving people experiencing homelessness, and congregate residential settings. Excludes all sites that provide healthcare or assistance with activities of daily living (ie, long term care facilities, skilled nursing facilities, hospitals, etc).

Updated: February 5, 2024

STILL HAVE QUESTIONS?

Visit <http://www.publichealth.lacounty.gov/media/Coronavirus/>
or email Communityoutbreak@ph.lacounty.gov

