

Public Health Update for Los Angeles County Skilled Nursing Facilities:

Clarifying COVID-19 Guidelines and More

July 14, 2023

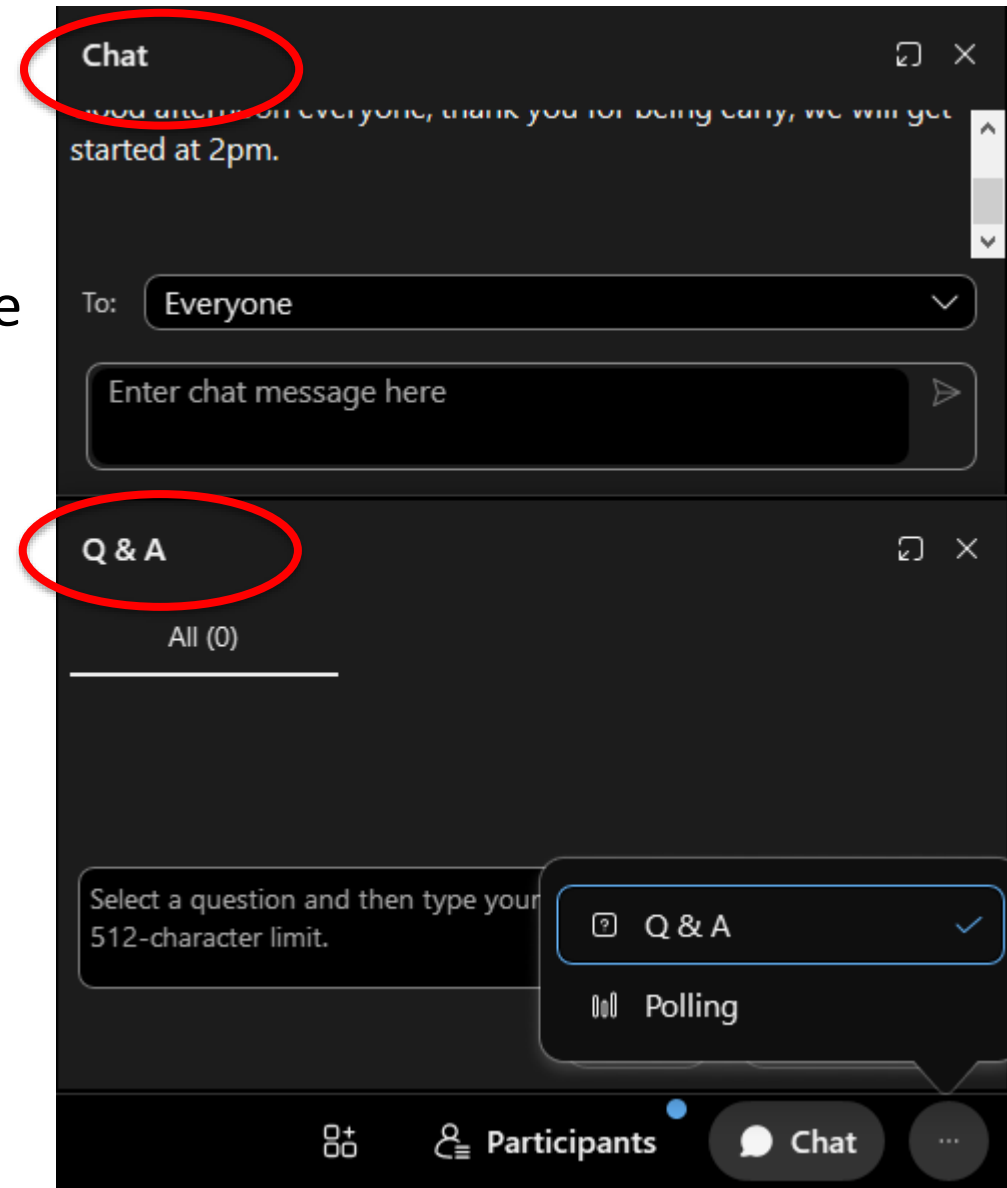
Pingting Karen Nie, MD

Los Angeles County Department of Public Health
Acute Communicable Disease Control Program



Housekeeping

- Do
 - Use chat only to interact with audience questions from the presenter
 - Use Q&A to ask questions
 - Please be respectful and constructive
- Don't
 - Please do not enter your name or facility name into the chat
 - Please do not be disruptive to the presenter and other attendees in the chat



Disclosures

There is no commercial support for today's webinar.

Neither the speakers nor planners for today's webinar have disclosed any financial interests related to the content of the meeting.

This webinar is meant for skilled nursing facilities only and is off the record. Reporters should log off now.



DISCLAIMER

- This is a changing situation so the information being presented is current as of today (07/14/23), so we highly recommend that if you have questions after today you utilize the resources that we will review at the end of this presentation.



Presentation Agenda

- Local COVID-19 Trends
- COVID-19 Reporting Updates
- Clarifications to COVID-19 Guidance
 - Testing
 - Isolation & Quarantine
 - Infection Prevention & Control
- New Ventilation and Indoor Air Quality Guidance
- Upcoming Educational & Training Opportunities
- Housekeeping & Important Resources
- Q and A



Local COVID-19 Trends





**VIEW LOS ANGELES COUNTY COVID-19
RESPONSE PLAN (PDF)**

(Revised 5/30/2023)

**Los Angeles County CDC COVID-19
Hospital Admission Level is:**

LOW

CDC COVID-19 Hospital Admission Levels

Los Angeles County (LAC) will continue to use the Centers for Disease Control and Prevention’s (CDC) **COVID-19 hospital admission levels** (table below) to guide assessment of risk across the county and inform the adoption of prevention strategies as described in the Community Safety Protection Measures and Prevention Strategies table. LAC will implement strategies for a higher hospital admission level when the hospital admission rate is at or above the threshold for a higher level for at least fourteen (14) consecutive days. Strategies will revert to a lower hospital admission level when the hospital admission rate has fallen below the threshold for the higher level for at least fourteen (14) consecutive days or the hospital admission rate has been declining consistently for the prior fourteen (14) days.

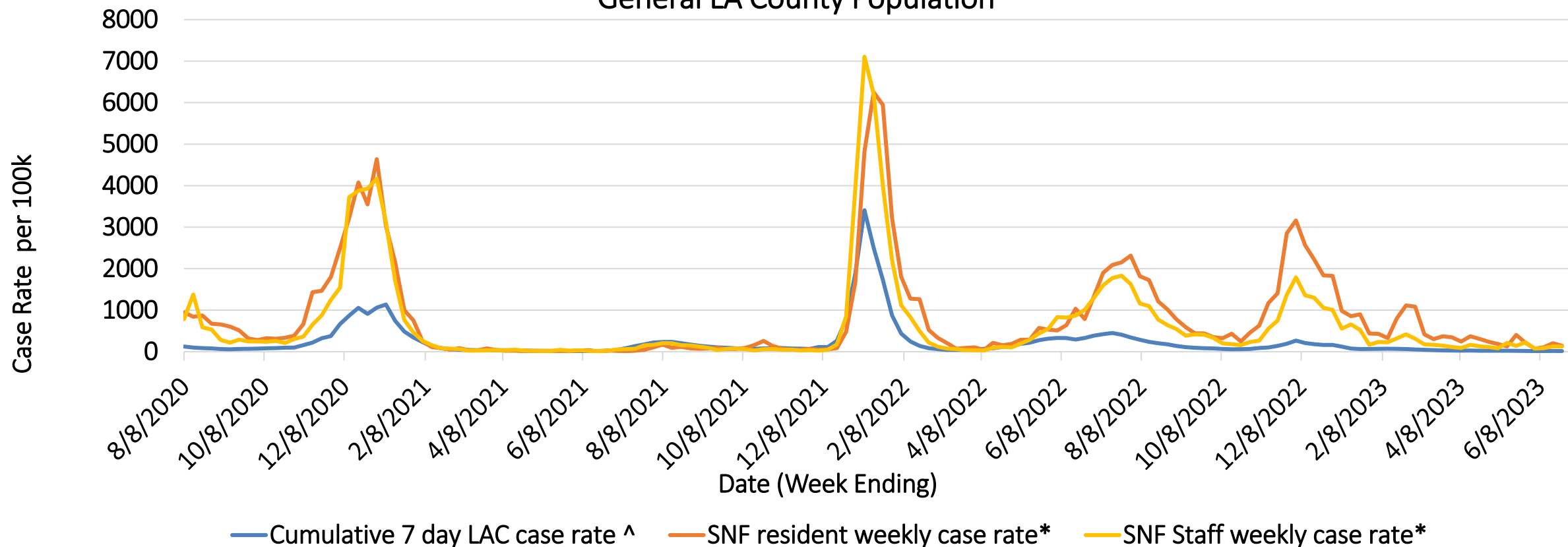
Metric	Low	Medium	High	LA County’s Current Value*
New COVID-19 hospital admissions per 100,000 population (7-day total)	<10.0	10.0-19.9	≥20.0	3.0

*Data was posted by CDC on 7/10/23 using data for the 7-day period ending on 7/1/23.

<http://publichealth.lacounty.gov/media/Coronavirus/data/response-plan.htm>



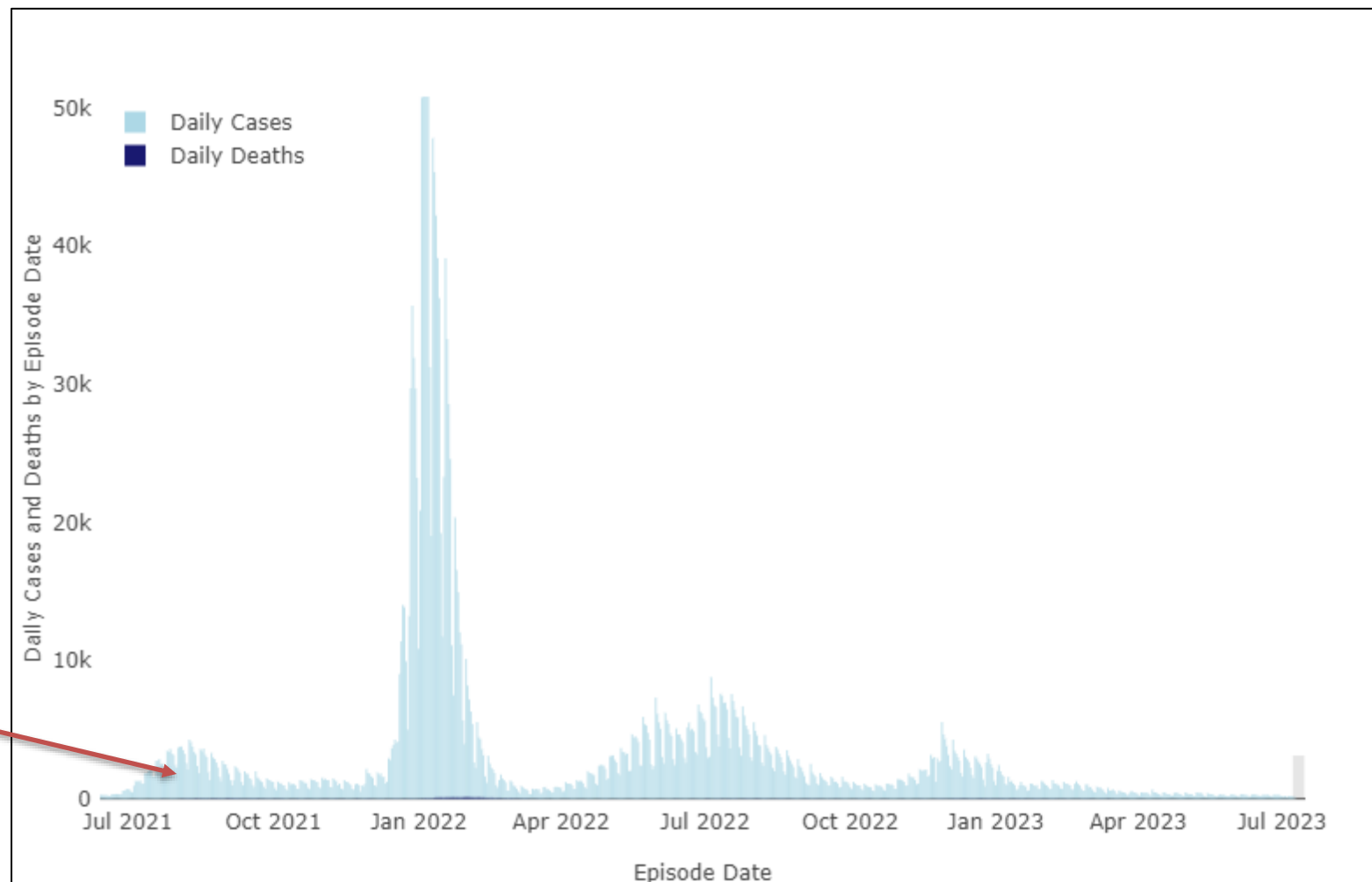
COVID-19 Case Rates Among Skilled Nursing Facility (SNF) Residents and Staff Compared with the General LA County Population



^ Seven-day cumulative crude Los Angeles County (LAC) case rates are sourced from IRIS database case episode date, and data are reported from Aug 8, 2020 through June 25, 2023. Episode date is the earliest existing value of: Date of Onset, Date of Diagnosis, Date of Death, Date Received, Specimen Collection Date. The population rate is per 100,000 and sourced from LAC PEPS 2018 demography files.

* Weekly crude SNF case rates were sourced from the self-reported surveys facilitated by the **Center for Disease Control National Healthcare Safety Network (NHSN) COVID-19 Long Term Care Facility Module** beginning May 14, 2023 until current. CDPH 123 weekly survey was used for data reported from Aug 2, 2020 through May 7, 2023 for SNF residents and staff. CDPH discontinued their weekly survey on May 11, 2023. Dates reflect the date the positive result was reported to the individual or facility. The population rate is per 100,000 and sourced from the reported weekly resident census and staff totals for all LAC jurisdiction SNFs – these are population statistics and not estimates. We cannot capture the approx 1,500 new admissions and staff turnover per week that should be included in the exposed denominator, so the SNF rates are overestimates. This analysis includes data reported by 312 SNFs as of Jun 25, 2023.

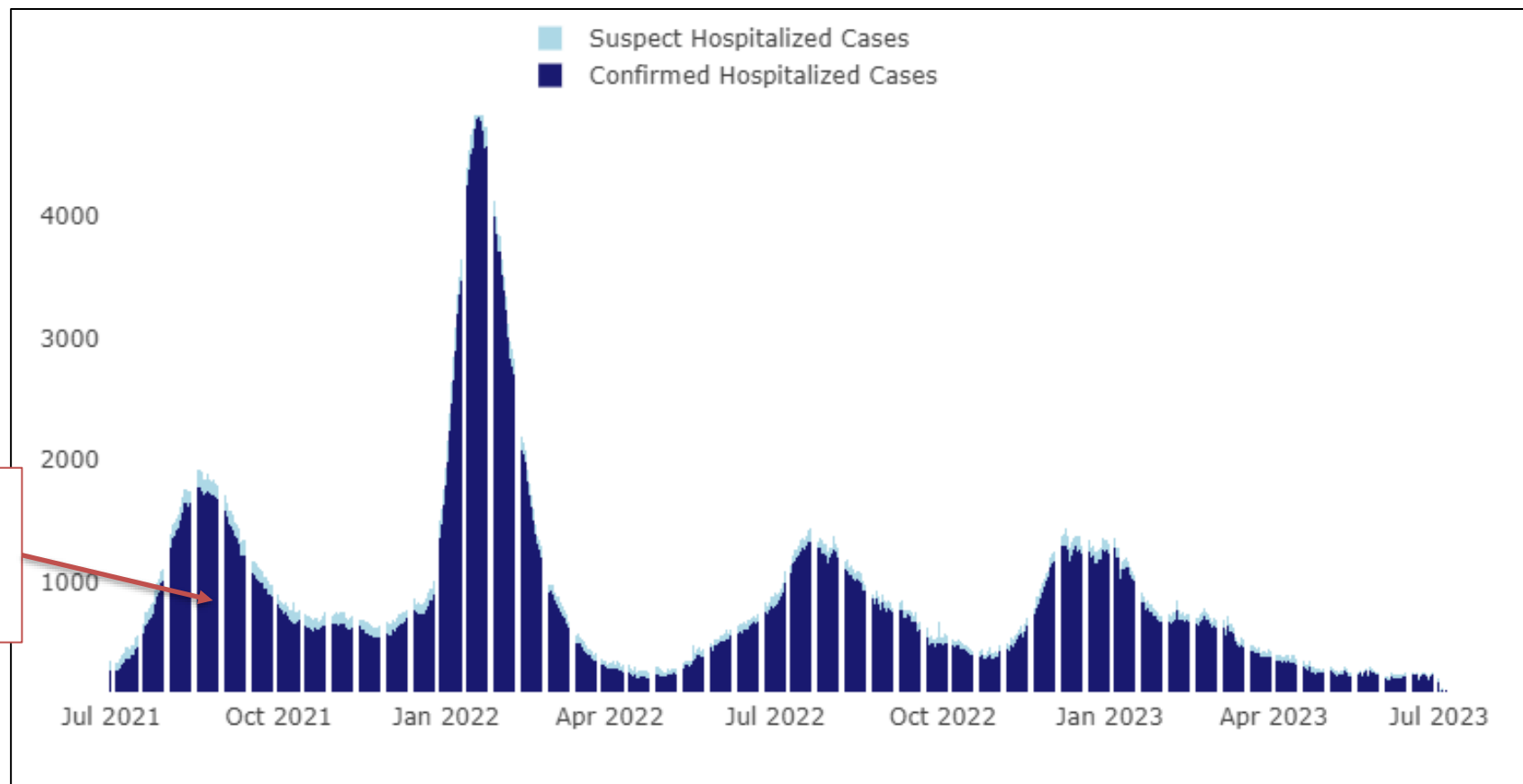
Daily COVID-19 Cases and Deaths by Episode Date, LA County



Summer 2021
surge: late July
thru September

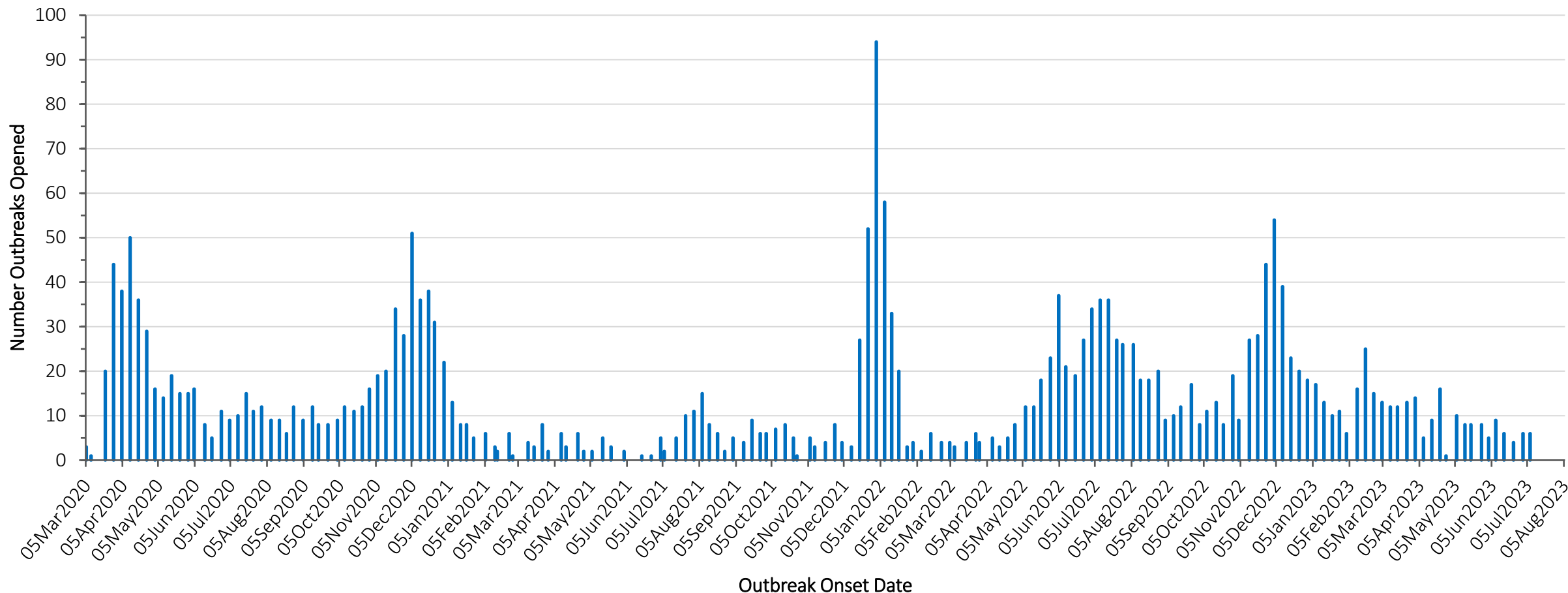
http://dashboard.publichealth.lacounty.gov/covid19_surveillance_dashboard/

Confirmed and Suspect Hospitalized Covid-19 Cases in LA County



Summer 2021 surge: late July thru September

New SNF Outbreaks in LA County by Onset Week



The intervals between bars appear to be irregular due to SNF outbreaks either having no associated onset or none opening per each day.

* Onset Date is based on the episode date of the earliest case known to be part of the outbreak. An outbreak onset date is determined by the investigation team’s review of the transmission dynamics, epi curve, and other factors. Date created is the date the outbreak was administratively opened in Public Health’s surveillance system and is used in reporting until an outbreak onset date is determined. Episode date is the earliest known date among: symptom onset date, date tested, or date reported. When the onset date is not known, the outbreak date created in the Public Health surveillance system is used.



COVID-19 Reporting Updates



Discontinuation of COVID-19 POCT Reporting for CLIA-Waived Facilities

- Effective June 14, 2023
- Who? CLIA-waived healthcare facilities (including SNFs)
- What? Discontinuation of individual reporting of point-of-care (POC) antigen tests for COVID-19
- What has **not** changed:
 - Positive antigen results in symptomatic residents may meet criteria for outbreak and must be reported to Public Health within 24 hours
 - Positive antigen results must be reported to Public Health investigators when facility is having an active **outbreak**



State of California—Health and Human Services Agency
California Department of Public Health



June 14, 2023

Dear Laboratory Partners,

To better align laboratory reporting for SARS-CoV-2, influenza virus, and respiratory syncytial virus (RSV), the California Department of Public Health (CDPH) is issuing updated reporting requirements for the types of results to report for these three pathogens. Please note, SARS-CoV-2 and influenza virus results are currently required to be reported to public health per CCR Title 17 section 2505. CDPH is in the process of adding RSV to section 2505 and asks laboratories to voluntarily report these results until CCR Title 17 section 2505 is officially updated.

SARS-CoV-2, Influenza Virus and RSV Result Reporting

- Report results electronically to the CalREDIE system within 24 hrs
- Facilities certified under CLIA to perform non-waived testing must report:
 - All laboratory-based SARS-CoV-2 and influenza virus Nucleic Acid Amplification Tests (NAAT) results, including positive and non-positive (negative, indeterminate, etc.) and are requested to report all RSV NAAT results, including positive and non-positive (negative, indeterminate, etc.)
 - All SARS-CoV-2 and influenza virus non-NAAT diagnostic testing (e.g., high throughput antigen testing) results, including positive and non-positive results of and are requested to report RSV non-NAAT diagnostic testing results, including positive and non-positive (negative, indeterminate, etc.)
- Facilities conducting testing with a CLIA Certificate of Waiver (e.g., skilled nursing facilities, schools):
 - Reporting of positive and non-positive results for SARS-CoV-2, influenza virus, and RSV is **not** required

Thank you for reporting results for these important pathogens. Please reach out to calrediehelp@cdph.ca.gov with any questions.

SARS-CoV-2 POC Antigen Test Kits

- LA County SNFs can request additional COVID-19 POC antigen test kits via this link: <https://www.surveymonkey.com/r/YJTH9S9>
- For urgent requests (e.g., outbreak) or to pause shipment, please contact nCovid-tlt@ph.lacounty.gov





Changes to COVID-19 Death Reporting

- Previously: guidance was to report any death with a positive COVID test in the past 90 days
- Going forward, providers should only report COVID-associated deaths as defined by a death where COVID:
 - **Directly preceded death; OR**
 - **Initiated the train of morbid events leading directly to death; OR**
 - **Was a significant condition that contributed to the death**
- Reporting can be done via one of three ways:
 - 1) [web form](#); OR
 - 2) sending a completed [PDF form](#) by secure email to COVIDdeath@ph.lacounty.gov; OR
 - 3) calling 888-397-3993 or 213-240-7821

Reminder on Importance of Accurate Reporting on Death Certificates

- Death certificates are now the primary means of tracking COVID-19 deaths in Los Angeles County
- CDC guidance: include COVID-19 if it was an *underlying cause of death* or if it was a *significant condition that contributed to the death*
- Share with all providers who may certify deaths:
 - [CDC Vital Statistics Reporting Guidance for Certifying Deaths Due to COVID-19](#) (PDF)
 - [CDC Reporting and Coding Deaths Due to COVID-19](#) (includes instructional videos)

Vital Statistics Reporting Guidance

Report No. 3 - Released April 2020 – Expanded February 2023



Guidance for Certifying Deaths Due to Coronavirus Disease 2019 (COVID-19)

Expanded in February 2023 to Include Guidance for Certifying Deaths Due to Post-acute Sequelae of COVID-19

Introduction

In December 2019, an outbreak of a respiratory disease associated with a novel coronavirus was reported in the city of Wuhan in the Hubei province of the People's Republic of China (1). The virus has spread worldwide and on March 11, 2020, the World Health Organization declared Coronavirus Disease 2019 (COVID-19) a pandemic (2). The first case of COVID-19 in the United States was reported in January 2020 (3) and the first death in February 2020 (4), both in Washington State. Since then, the number of reported cases in the United States has increased and is expected to continue to rise (5).

effects of this pandemic and appropriately direct public health response.

Cause-of-Death Reporting

When reporting cause of death on a death certificate, use any information available, such as medical history, medical records, laboratory tests, an autopsy report, or other sources of relevant information. Similar to many other diagnoses, a cause-of-death statement is an informed medical opinion that should be based on sound medical judgment drawn from clinical training and



Clarifications to COVID-19 Guidance: Testing



CDC Guidance

- “When performing an outbreak response to a known case, facilities should always defer to the recommendations of the jurisdiction’s public health authority.”
- “The approach to an outbreak investigation could involve either contact tracing or a broad-based approach; **however, a broad-based (e.g., unit, floor, or other specific area(s) of the facility) approach is preferred if all potential contacts cannot be identified or managed with contact tracing or if contact tracing fails to halt transmission.**”

https://www.cdc.gov/coronavirus/2019-ncov/hcp/infection-control-recommendations.html#anchor_1604360679150

Why do “recommendations” still matter if PHE “requirements” have ended?

- Outbreaks
 - Written emergency preparedness plans must include outbreak response plans
- Beyond outbreaks
 - Federal regulations [42 CFR 483.80](#) require written plan to prevent and control spread infections and communicable diseases
- **Facilities’ actions are evaluated based on their written plans**
- **Written plans should follow local, state, and federal guidance**
- Applies to COVID-19 along with other transmissible diseases (*MDROs, group A strep, Legionella, scabies, norovirus, influenza, etc....*)

Response Testing

Contact Tracing Testing:

Close contacts and exposed staff identified in contact tracing

- Exposure is limited to close contacts; AND
- Rapid contact tracing is feasible (reliable exposure history + sufficient IP staffing resources are available)

Group-level testing:

All residents and staff in the same area (unit, wing, nursing station area)

- Exposure is limited to a single area of the facility

Facility-wide testing:

All residents and staff in the facility

- Widespread exposure is suspected; OR
- Exposure is unknown; OR
- Contact tracing is unreliable or unable to be performed in a timely way

Response Testing

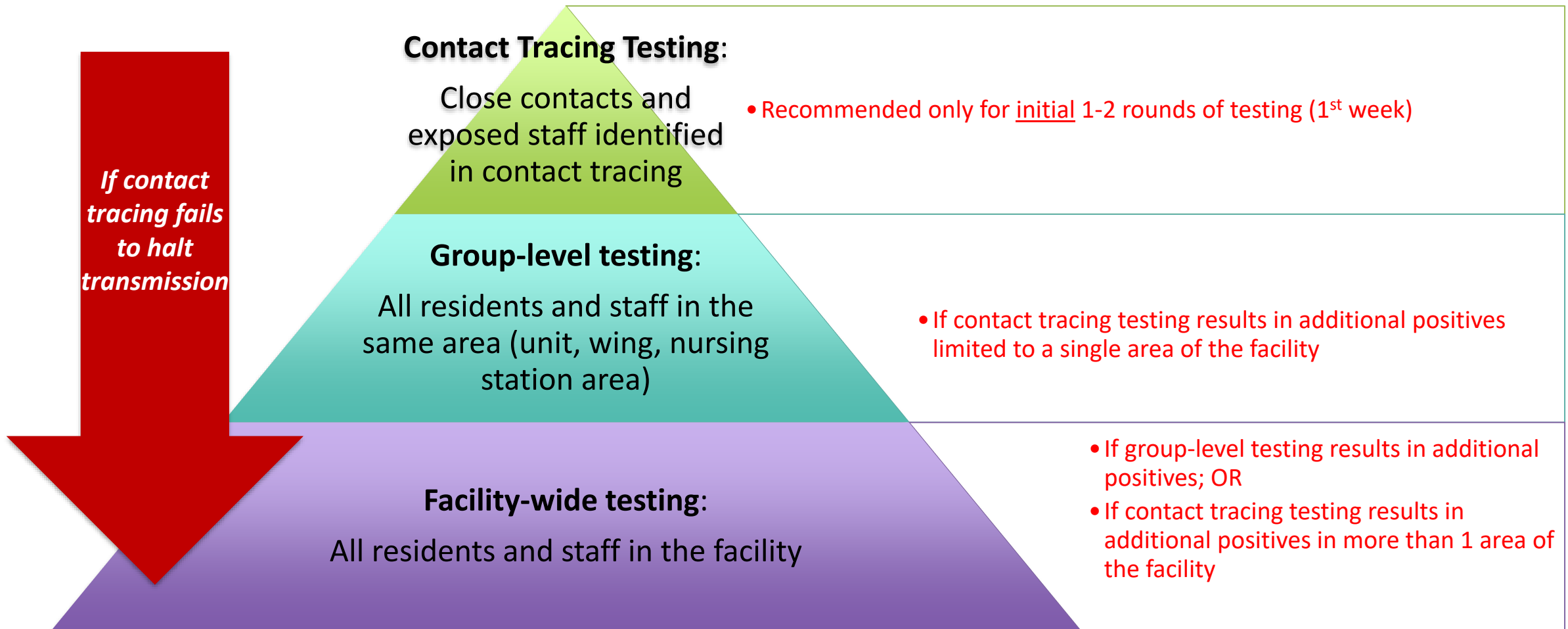
- When in doubt, it is acceptable and recommended to conduct **facility-wide testing!**

	Suspected <u>limited</u> exposure	Suspected <u>group-level</u> exposure	Suspected <u>widespread</u> exposure (more than 1 unit/wing/nursing station)
Rapid <u>and</u> reliable contact tracing*	Contact tracing testing**	Group-level testing**	Facility-wide testing**
NO rapid <u>and</u> reliable contact tracing*	Group-level testing or facility-wide testing	Facility-wide testing**	Facility-wide testing**

***Reminder:** rapid and reliable contact tracing requires 1) reliable exposure history + 2) sufficient IP staffing resources are available

**Facility-wide testing is acceptable for all scenarios

Response Testing: Next steps after initial round of testing





Clarifications to COVID-19 Guidance: Isolation & Quarantine



Isolation vs Quarantine

	Transmission Based Precautions, PPE, Resident Placement	Recommended Signage
<p>Isolation</p> <p>Confirmed and suspect cases</p>	<ul style="list-style-type: none"> Resident is restricted to room except when medically necessary Resident wears face mask Staff dons and doffs PPE for <u>each</u> resident encounter: <ul style="list-style-type: none"> N95 respirator* Gloves (with hand hygiene) Gown Eye protection 	<p>COVID-19 Transmission-Based Precautions</p>
<p>Quarantine</p> <p>Exposed asymptomatic individuals</p>	<p>For COVID-19, quarantine is not <u>routinely</u> recommended.</p> <p>Public Health may direct facilities on a case-by-case basis to quarantine residents in certain risk groups during an outbreak.</p>	<p>Only if a resident is placed in quarantine, then infection control signage (e.g., COVID-19 transmission-based precautions) is indicated.</p> <p>Avoid the use of “Yellow Zone” or “Green Zone” signs.</p>

Public Health Directives During Outbreak Investigations

Public Health authority during outbreak investigations is not tied to any public health emergencies or health officer orders.



COVID-19 OUTBREAK NOTIFICATION

Please see the attached Health Officer Order.

Site Name: [SITE NAME]

Outbreak Number: [# from IRIS]

Dear [ADMINISTRATOR'S NAME],

The Los Angeles County Department of Public Health (LAC DPH) has received notification of a COVID-19 outbreak at the site specified in this letter among .

The following Public Health staff person will be working with you to investigate this outbreak and to put control measures in place: [OUTBREAK INVESTIGATOR NAME AND TITLE].

Attached to this letter is the Order of the Health Officer for Control of COVID-19: Prevention of COVID-19 Transmission in Skilled Nursing Facilities. You are required by law to comply with this Order in accordance with California Health and Safety Code sections 120175, and 120220.

Based on the preliminary investigation, LAC DPH requires the following control measures and actions:

D. Additional actions may be necessary for outbreak control and management, at the discretion of LAC DPH.

COUNTY OF LOS ANGELES DEPARTMENT OF PUBLIC HEALTH ORDER OF THE HEALTH OFFICER



6. ADDITIONAL TERMS

- This Order does not, in any way, restrict: (i) First responder access to the Site(s) named in this Order during an emergency or (ii) local, state or federal officers, investigators, or medical or law enforcement personnel from carrying out their lawful duties at the Site(s) named in this Order.
- If any subsection, sentence, clause, phrase, or word of this Order or any application of it to any person, structure, gathering, or circumstance is held to be invalid or unconstitutional by a decision of a court of competent jurisdiction, then such decision will not affect the validity of the remaining portions or applications of this Order.
- The violation of any provision of this Order constitutes an imminent threat and creates an immediate menace to public health, safety, and welfare. To protect the public's health, the County Health Officer may take additional action(s) for failure to comply with this Order.
- This Order is issued pursuant to California Health and Section Code sections 120175, 120220, and 120225; section 11.02.030 of the Los Angeles County Code; and Title 17 California Codes of Regulations section 2501.

- <https://codes.findlaw.com/ca/health-and-safety-code/hsc-sect-120225/>
- <http://lacounty-ca.elaws.us/code/coor title11 div1 ch11.02 pt1 art1 sec11.02.030>
- <https://www.law.cornell.edu/regulations/california/17-CCR-2501>

A note about transmission-based precaution signage

Q: What signage needs to go on the door?

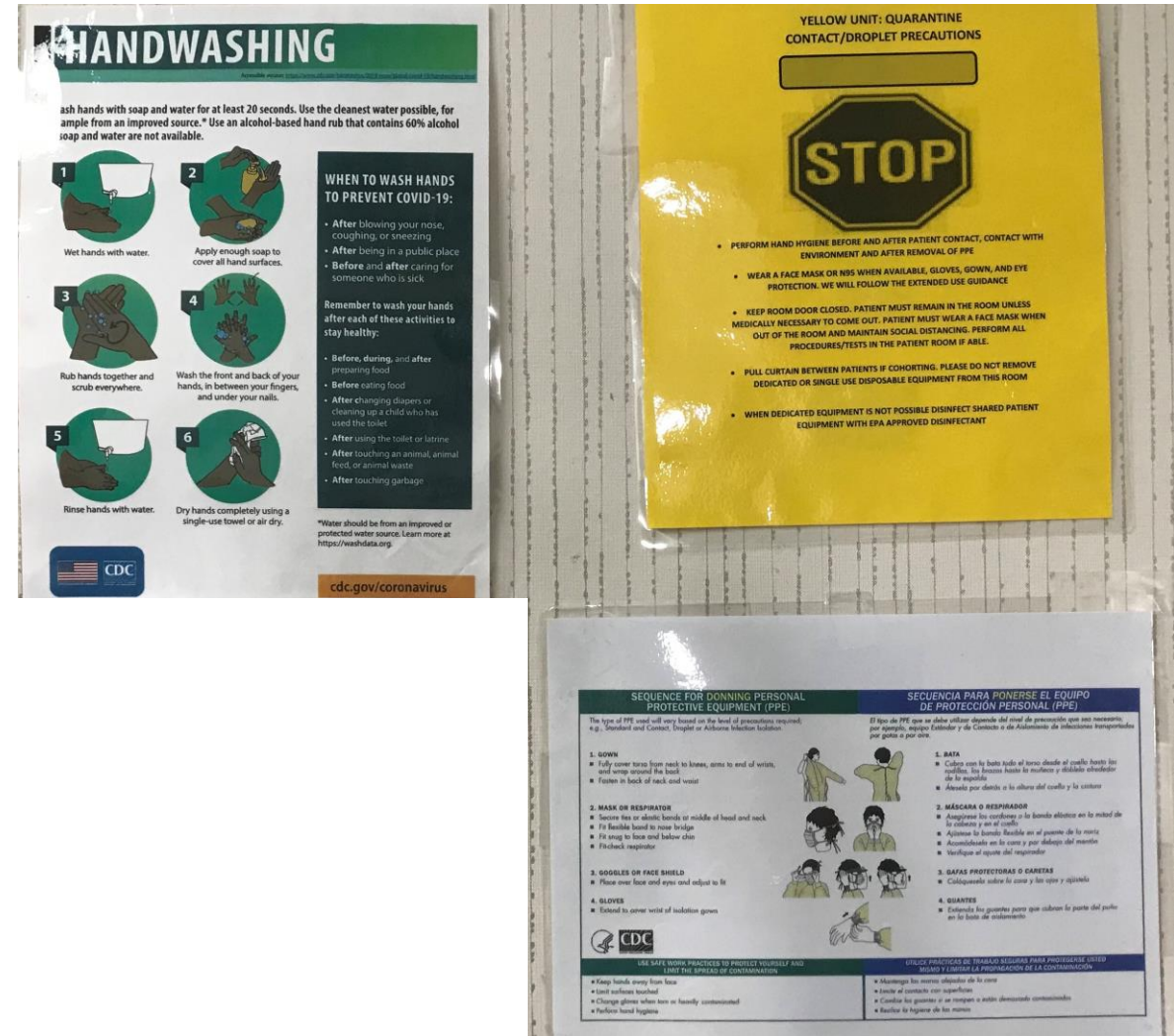
A: It is preferable that the signage on doors illustrate exactly what PPE needs to be worn and what measures HCP need to take when entering and exiting the room. Use of the terms “airborne and contact precautions” by themselves, do not communicate effectively what exactly the HCP needs to do or wear. Note that, although an N95 and eye protection are required when caring for COVID-19 patients, an airborne infection isolation room is not required.

Audience Question: What do these signs communicate?

A



B



Recommended transmission-based precaution signs

STOP

ALTO

Novel Respiratory Precautions

Medidas de Precaución por Nuevas Infecciones Respiratorias

See nurse before entering the room

Vea a la enfermera(o) antes de entrar al cuarto

Clean hands on room entry
Límpiese las manos antes de entrar al cuarto

Wear a gown on room entry
Use una bata al entrar al cuarto

Wear a N-95 and face shield or goggles
Use una N-95 y una careta o gafas

Wear gloves on room entry
Use guantes al entrar al cuarto

Clean hands when exiting
Límpiese las manos al salir

At discharge, keep door closed for __ HOUR(s) prior to admitting next resident

Al dar de alta al paciente, mantenga la puerta cerrada durante ____ HORA(s) antes de admitir al siguiente residente

Content adapted from UCLA Health Infectious Disease Signs

Los Angeles County Department of Public Health
publichealth.lacounty.gov/acd/SNF.htm
Novel Respiratory Precautions, Revised August 2021

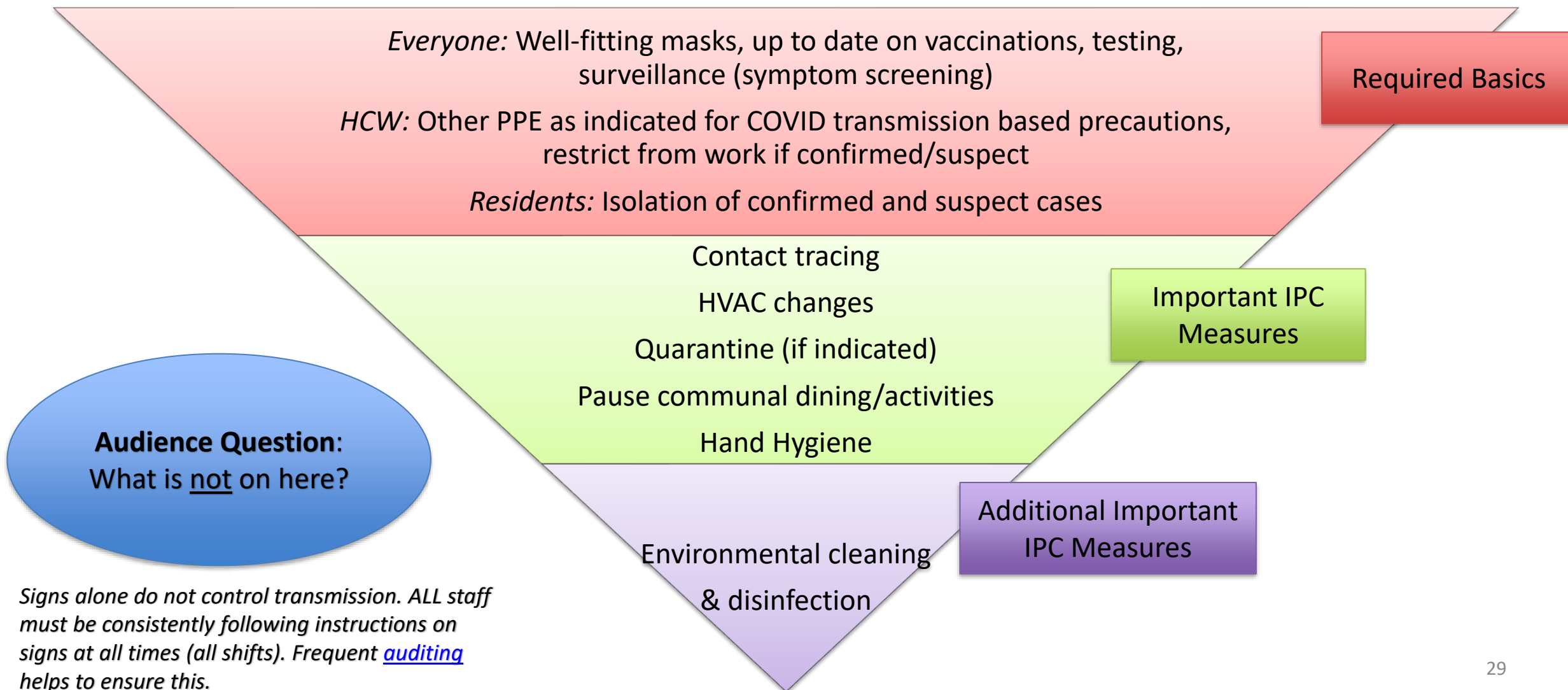
<p style="font-size: 0.8em;">Page 1 (8 1/2" x 11) English/Spanish</p>	<p style="font-size: 0.8em;">Page 2 (8 1/2" x 11) English / Spanish (pending)</p>	<p>These precautions should be used to prevent transmission of airborne infectious agents that remain infectious over long distances such as, but not limited to: Measles (Rubeola), Tuberculosis, Chickenpox (Varicella virus)</p>
<p style="font-size: 0.8em;">Page 1 (8 1/2" x 11) English/Spanish</p>	<p style="font-size: 0.8em;">Page 2 (8 1/2" x 11) English / Spanish (pending)</p>	<p>These precautions should be used to prevent transmission of pathogens spread through respiratory droplets or secretions such as, but not limited to: Influenza, Meningitis due to <i>Haemophilus Influenza</i> type B whether known or suspected, Meningococcal disease (caused by <i>Neisseria meningitidis</i>) including meningitis</p>
<p style="font-size: 0.8em;">Page 1 (8 1/2" x 11) English/Spanish</p>	<p style="font-size: 0.8em;">Page 2 (8 1/2" x 11) English / Spanish (pending)</p>	<p>These precautions should be used to help prevent the spread of infectious agents that spread by direct or indirect contact with a resident or a resident's environment such as, but not limited to: Hepatitis (Type A), scabies, skin abscesses with heavy drainage (until drainage stops), diarrhea (not <i>C. diff</i>), and certain multi-drug resistant organisms (MDROs) such as <i>Candida auris</i>.</p>



Clarifications to COVID-19 Guidance: Infection Prevention & Control



Prioritizing infection prevention & control measures for COVID-19



Environmental cleaning & disinfection

- Product selection: EPA List N
 - Consider contact time, surface type, formulation type (ready-to-use, wipes, requires preparation/dilutable), healthcare grade vs residential only

Bleach does not clean, only disinfects. If used on uncleaned surface, will affect its ability to disinfect.

6 Steps for Safe & Effective Disinfectant Use

- Step 1: Check that your product is EPA-approved**
Find the EPA registration number on the product. Then, check to see if it is on EPA's list of approved disinfectants at: epa.gov/listn
- Step 2: Read the directions**
Follow the product's directions. Check "use sites" and "surface types" to see where you can use the product. Read the "precautionary statements."
- Step 3: Pre-clean the surface**
Make sure to wash the surface with soap and water if the directions mention pre-cleaning or if the surface is visibly dirty.
- Step 4: Follow the contact time**
You can find the contact time in the directions. The surface should remain wet the whole time to ensure the product is effective.
- Wear gloves and wash your hands**
Wear disposable gloves, discard them after each cleaning. For reusable gloves, dedicate a pair to disinfecting COVID-19. Wash hands after removing the gloves.
- Step 6: Lock it up**
Keep lids tightly closed and store out of reach of children.

coronavirus.gov

United States Environmental Protection Agency

List N Tool: COVID-19 Disinfectants

- # EPA Registration Number
- Active Ingredient
- Use Site
- Surface Types
- Contact Time**
- Browse All
- Keyword Search

Total count: 198

Show 10 entries

EPA Registration Number	Active Ingredient(s)	Product Name	Company	Follow the disinfection directions and preparation for the following virus	Contact Time (in minutes)	Formulation Type	Surface Type	Use Site	Why is this product on List N?
100798-1	Hypochlorous acid	Nanocyn	Microsafe Group DMCC	Feline calicivirus	0.5	Ready-to-use	Hard Nonporous (HN)	Healthcare; Institutional	Kills a harder-to-kill pathogen than SARS-CoV-2 (COVID-19); Emerging viral pathogen claim
10324-194	Quaternary ammonium	Maquat 2420-10	Mason Chemical Company	SARS-CoV-2	1	Dilutable	Hard Nonporous (HN)	Healthcare; Institutional; Residential	Tested against SARS-CoV-2 (COVID-19)



New Ventilation and Indoor Air Quality Guidance



New Guidance for Improving Ventilation to Reduce COVID-19 Transmission Risk

- [Best Practices for Ventilation of Isolation Areas to Reduce COVID-19 Transmission Risk in Skilled Nursing Facilities, Long-Term Care Facilities, Hospices, Drug Treatment Facilities, and Homeless Shelters \(June 29, 2023\)](#)
- Describes several practical methods that can be applied in nursing homes
 - Ease of implementation
 - Effectiveness
 - Temporary vs permanent
 - Longer term improvements should be initiated now
 - Temporary changes – for example, during outbreaks or periods of high community transmission – should be a part of a facility’s written emergency preparedness plan
- When HCAI approval is indicated
- **Collaboration** between facility engineers, HVAC professional consultants, administrators, and IP team
- Companion document to the [joint interim guidance from CDPH, HCAI, Cal-OSHA on Ventilation, Filtration and Air Quality](#) (*more appropriate for facility engineers/HVAC professionals*)



Upcoming Educational & Training Opportunities





Ask an IP – Learning and Communication Series

- Audience: **SNF IPs**
- Monthly learning and communication series on infection prevention and control beyond COVID-19
- Goal: provide a safe space to foster discussion and a culture of safety and support among LAC SNF IPs
- “All teach all learn” environment
- Resumed on July 12, 2023 and will be held **monthly on Wednesdays** from **1:30 – 2:30pm**
- To join: [Webex link to join \(no registration required\)](#)



LAC DPH Project Firstline

- Audience: **frontline staff – priority for EVS and CNAs**
- 1-hr interactive online trainings
- No prior training or educational requirements
- Spanish speaking component is in the works
- <http://www.projectfirstlinelacounty.com/>



CDPH Train-the-Trainer Workshops

- Audience: **IPs and other IP team leads (DSD, EVS manager)**
- Hosted by CDPH Healthcare-Associated Infections (HAI) Program and Health Services Advisory Group (HSAG)
- Series of four (4) train-the-trainer workshops
- Continuing education credits are available only for individuals who attend the workshops real-time (not recordings)
- The first 2 workshops on Enhanced Standard Precautions and UTI Prevention have already passed in May and June (recordings, slides and resources available on their [website](#))
- Register for the upcoming workshops
 - [IPC Curriculum for Certified Nursing Assistants](#) (July 17-21)
 - [Environmental Cleaning and Disinfection Curriculum for EVS Managers and IPs](#) (Aug 21-25)
- For more information: <https://www.hsag.com/ip-train-the-trainer>



LAC DPH Skilled Nursing Facility In-person Symposium: October 26 & 27, 2023

- More info to come!
- Hold these dates on your calendars!



Housekeeping & Important Resources



NEW! Point of contact form



LA County SNF Point of Contact Information

Please use this form to update the point of contacts' names and email address information for the skilled nursing facilities (SNFs) of Los Angeles County (LAC). LAC Department of Public Health (LAC DPH) uses this information only to communicate Public Health related updates from our long-term care team in Acute Communicable Disease Control, LACSNF@ph.lacounty.gov. Communications may include infection prevention and control guideline updates, educational resources, webinars and other learning opportunities, the monthly SNF infection prevention (IP) newsletter, and more.

Note: All SNFs in LA County should fill out this form annually, at minimum, starting July 2023 to ensure LAC DPH has accurate up to date contact information for your facility. Please also use this form whenever your facility has a change in the following staff: administrator, medical director, infection preventionist(s), director of nursing, director of staff development.

Only ONE form is needed per facility annually, but facilities are welcome to submit more than once.

Please note it may take **5 business days** for any requested changes to take effect. Please ensure emails from LACSNF@ph.lacounty.gov are not being filtered out to spam or junk folders.

* Required

LAC Skilled Nursing Facility (SNF) Contact Update

1. Select your Skilled Nursing Facility (SNF) Name & ID: *

Select your answer



<http://www.tinyurl.com/LACSNFcontacts>


LAC DPH Homepage for Skilled Nursing Facilities



Please bookmark!

Revamp is coming soon

Acute Communicable Disease Control



Skilled Nursing Facilities

Education and guidance for improving infection prevention

SNF: COVID-19 Guidance and Resources

TNT Program

SNF Webinar Archive

LAC DPH Healthcare Outreach Unit **Main Page**

News and Updates

LOS ANGELES COUNTY - SNF RESOURCES

- [Monkeypox Guidance for LTCFs, SNFs and CCFs](#)
- [Transforming Nursing Home Care Together \(TNT\) Program](#)
- [SNF Webinar Archive](#)
- [Ask an IP \(Education Series for SNFs\)](#)
- [Transmission Based Precautions - Disease Prevention Posters and Resources](#)
- [List of Long-term Acute Care Hospitals \(LTACHs\) and SNFs with Subacute Units in LA County](#)

CDPH

- [Licensing & Certification Program's All Facilities Letter](#)

Building a SNF Infection Prevention Program

- [LAC DPH Recommended Infection Prevention and Control \(IPC\) Training for Skilled Nursing Facilities](#)

<http://publichealth.lacounty.gov/acd/SNF.htm>

Urgent Updates

AFL 23-20 Hot Summer Weather Advisory

Due to the expected rise in temperatures over the weekend, we ask you to please review [AFL 23-20 Hot Summer Weather Advisory](#) from the California Department of Public Health (CDPH). The AFL is a summary of guidance for health care facilities, including skilled nursing facilities (SNFs), to implement precautionary measures to both keep their residents safe and comfortable during extremely hot weather while mitigating risk of COVID-19 transmission. If not implemented correctly, some hot weather precautionary measures (using fans) can worsen spread of COVID-19. Please carefully read the AFL in full. Nursing home residents are among the highest risk for illness related to temperature extremes.

COVID-19 Updates

Letter From Los Angeles County Health Officer on Healthcare Worker Vaccination Requirement

Los Angeles County's Health Officer, Dr. Muntu Davis addresses the county's healthcare worker (HCW) COVID-19 vaccination requirement order. A letter published July 5, 2023 provided a tentative preview on vaccination requirement changes for the fall. However, until the current county Health Officer Order is rescinded, the [current county COVID-19 vaccination requirement for HCWs](#) remains. This letter was emailed to all SNFs including their medical director (if contact information was available). If your facility did not receive this letter, please contact LACSNF@ph.lacounty.gov and update your facility's contact here: tinyurl.com/LACSNFcontacts.

Educational Opportunities & Webinars

Ask an IP Returns July 12, 2023 (Wednesday)

The IP team at Los Angeles County Department of Public Health (LAC DPH) Acute Communicable Disease Control (ACDC) invites you to join us for Ask an IP, our monthly learning and communication series on infection prevention and control beyond COVID-19 in the SNF setting. Our goal is to foster discussion and a culture of safety and support among Los Angeles County SNF IPs. This series is meant to be an "all teach all learn" environment. By working together, we can improve resident safety within LAC healthcare settings. This series will resume on July 12, 2023 and will be held monthly on Wednesdays from 1:30 – 2:30pm. Please click here to join: [Webex link to join \(no registration required\)](#).

LAC DPH Webinar on July 14, 2023 (Friday): Clarifying COVID-19 Guidelines and More

LAC DPH is hosting a webinar this Friday, July 14, 2023 at 2:00 PM on "Public Health Update for Los Angeles County Skilled Nursing Facilities: Clarifying COVID-19 Guidelines and More." No registration is required. How to join: <https://lacountyph.webex.com/lacountyph/j.php?MTID=m25c3ed0232e834d0b26fa643eae92eb0>. Meeting number: 2559 298 2625, Password: 7PNsM2sVQH3 (77676278 from video systems) . Join by video system: Dial 25592982625@lacountyph.webex.com or dial 173.243.2.68 and enter your meeting number. Join by phone +1-213-306-3065 United States Toll (Los Angeles), Access code: 255 929 82625.

Project Firstline

LA County has partnered with the CDC to provide *FREE* basic infection prevention and control training for all facility staff and frontline healthcare workers. LAC DPH is inviting SNF environmental services, housekeepers, certified nursing assistants, and other frontline staff to join. By the end of these 1-hr interactive online trainings, frontline HCWs will be able to understand and confidently apply infection control principles and protocols in nursing homes regardless of previous training or educational background. Project Firstline is restarting monthly online trainings in August. To learn more and register: www.ProjectFirstLineLACounty.com.

CDPH Train-the-Trainer Workshops: July & August 2023

The CDPH Healthcare-Associated Infections (HAI) Program and Health Services Advisory Group (HSAG) invite all SNFs to participate in a series of four (4) train-the-trainer workshops focused on improving infection prevention and control (IPC) practices to reduce HAIs and infection-related hospitalizations. *Continuing education* credits are available only for individuals who attend the workshops real-time (not recordings). The first 2 workshops on Enhanced Standard Precautions and UTI Prevention have already passed in May and June (recordings and materials [here](#)), but there is still time to register and attend the July and August workshops on [IPC Curriculum for Certified Nursing Assistants](#) (July 17-21) and [Environmental Cleaning and Disinfection Curriculum for EVS Managers and IPs](#) (Aug 21-25). For more information: <https://www.hsag.com/ip-train-the-trainer>.



Contacts and Resources for Skilled Nursing Facilities in LA County

- Contact for COVID-19 related questions in SNFs: LTC_NCoV19@ph.lacounty.gov
- Contact regarding anything else related to SNFs: LACSNF@ph.lacounty.gov

- LAC DPH COVID-19 SNF Past Webinar Slides & Recordings:
<http://publichealth.lacounty.gov/acd/SNFWebinarArchive.htm>

COVID-19 Resources and References

- **Los Angeles County Public Health**

- Guidelines for Preventing & Managing COVID-19 in Skilled Nursing Facilities:
<http://publichealth.lacounty.gov/acd/ncorona2019/healthfacilities/snf/prevention/>
- COVID-19 Infection Prevention Guidance for Healthcare Personnel:
<http://publichealth.lacounty.gov/acd/ncorona2019/healthfacilities/HCPMonitoring/>

- **CDPH:**

- CDPH All Guidance Documents by Topic (including State Public Health Officer Orders):
<https://www.cdph.ca.gov/Programs/CID/DCDC/Pages/Guidance.aspx>
- All Facilities Letters (AFLs), all years: <https://www.cdph.ca.gov/Programs/CHCQ/LCP/Pages/All-Facilities-Letters-Listing.aspx>

- **CDC:**

- Interim Infection Prevention and Control Recommendations for Healthcare Personnel During the Coronavirus Disease 2019 (COVID-19) Pandemic
<https://www.cdc.gov/coronavirus/2019-ncov/hcp/infection-control-recommendations.html>

